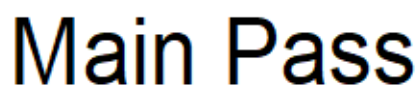


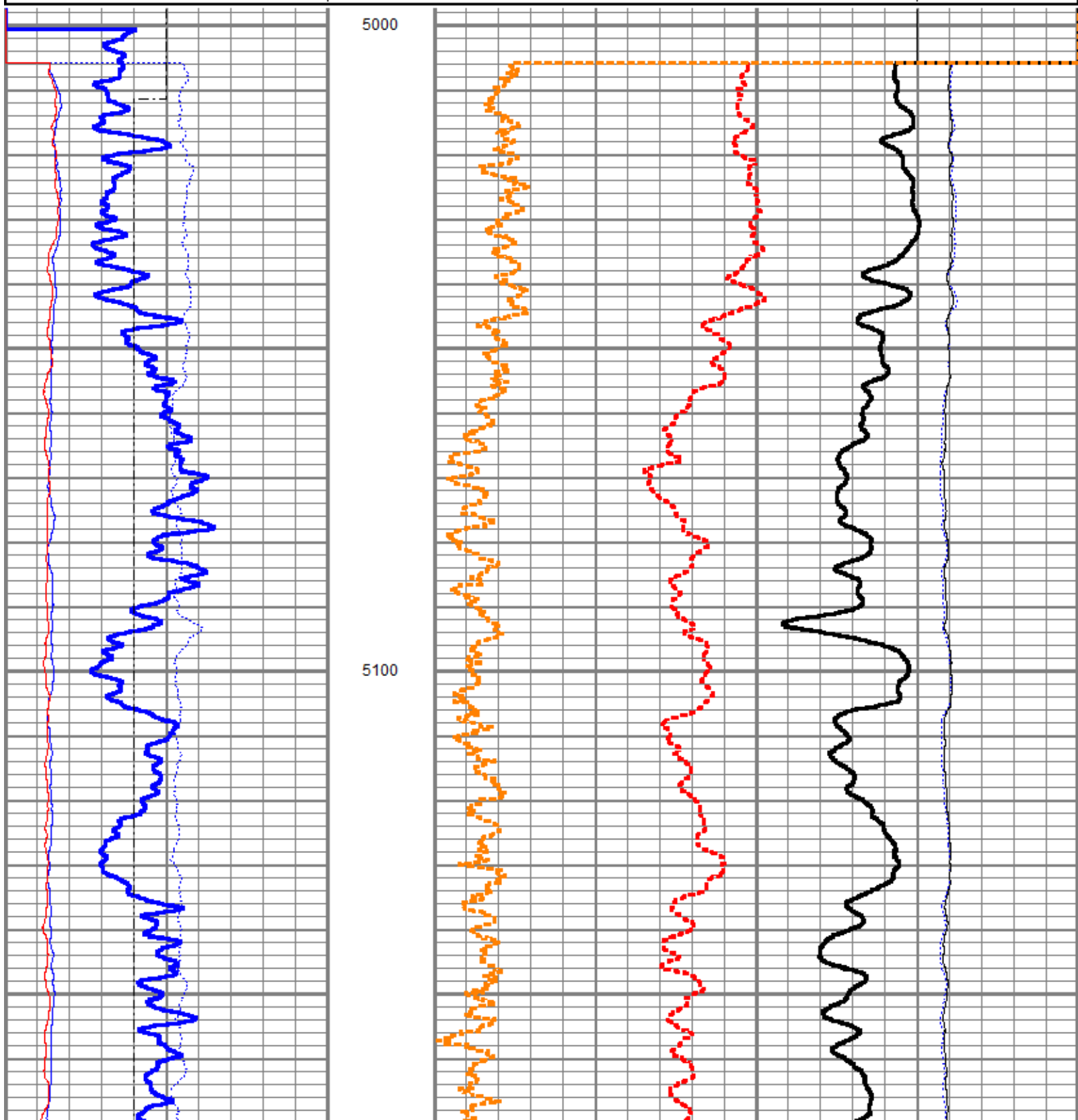
<<< Fold Here >>>
All interpretations are opinions based on inferences from electrical or other measurements and we cannot and do not guarantee the accuracy or correctness of any interpretation, and we shall not, except in the case of gross or willful negligence on our part, be liable or responsible for any loss, costs, damages, or expenses incurred or sustained by anyone resulting from any interpretation made by any of our officers, agents or employees. These interpretations are also subject to our general terms and conditions set out in our current Price Schedule.
Comments
Log ran as per customer request Depth referenced to Reliance Bond Log dated 31-OCT-2018 Log ran from 9162 FT to 5000 FT Pulsed Neutron Data logged with the Hunter RAS Tool  Thank you for choosing Reliance Oilfield Services, LLC!

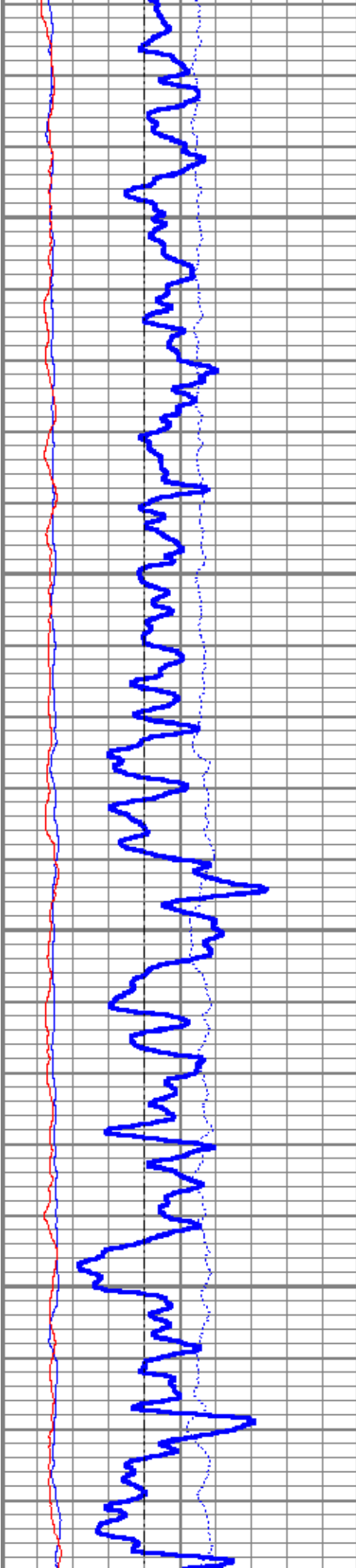


Database File	02_tep\federal pa 432-24\tep_federal pa 432-24_pn_11-1-18 (1)\tep_federal pa 432-24_pn_11-01-18.db
Dataset Pathname	federal_pa_432-24_pn_shift
Presentation Format	ros_pdn_hunter
Dataset Creation	Mon Nov 05 05:26:09 2018
Charted by	Depth in Feet scaled 1:240

0	GR (GAPI)	150
-100	Line Speed (ft/min)	100
0	NIRS	400000
0	BKGN (cps)	4000
0	BKGF (cps)	2000

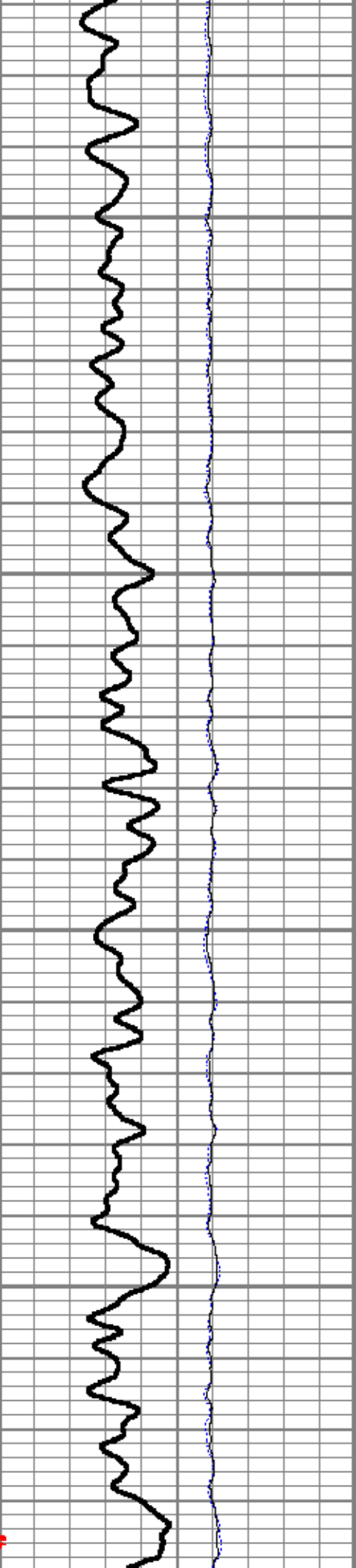
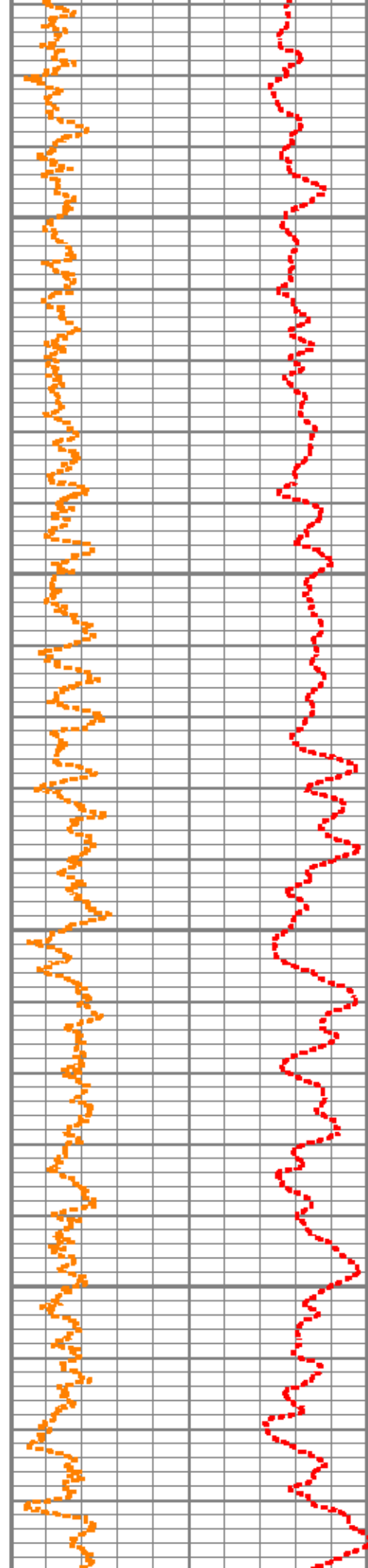
4	RNF2	0
60	SIGMA (cu)	0
4.5	RNFI	0
		0 FIS2 45000
		0 NIS2 100000

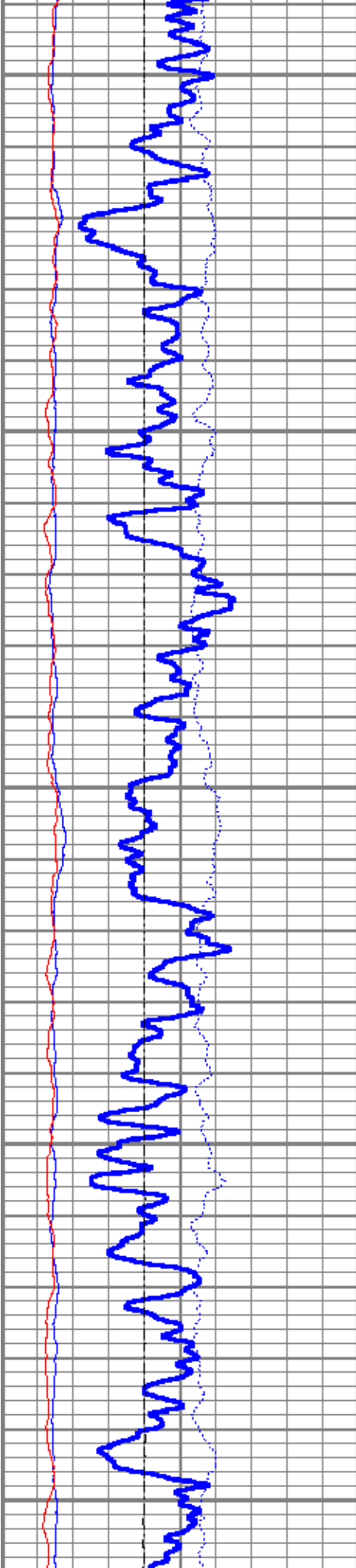




5200

5300

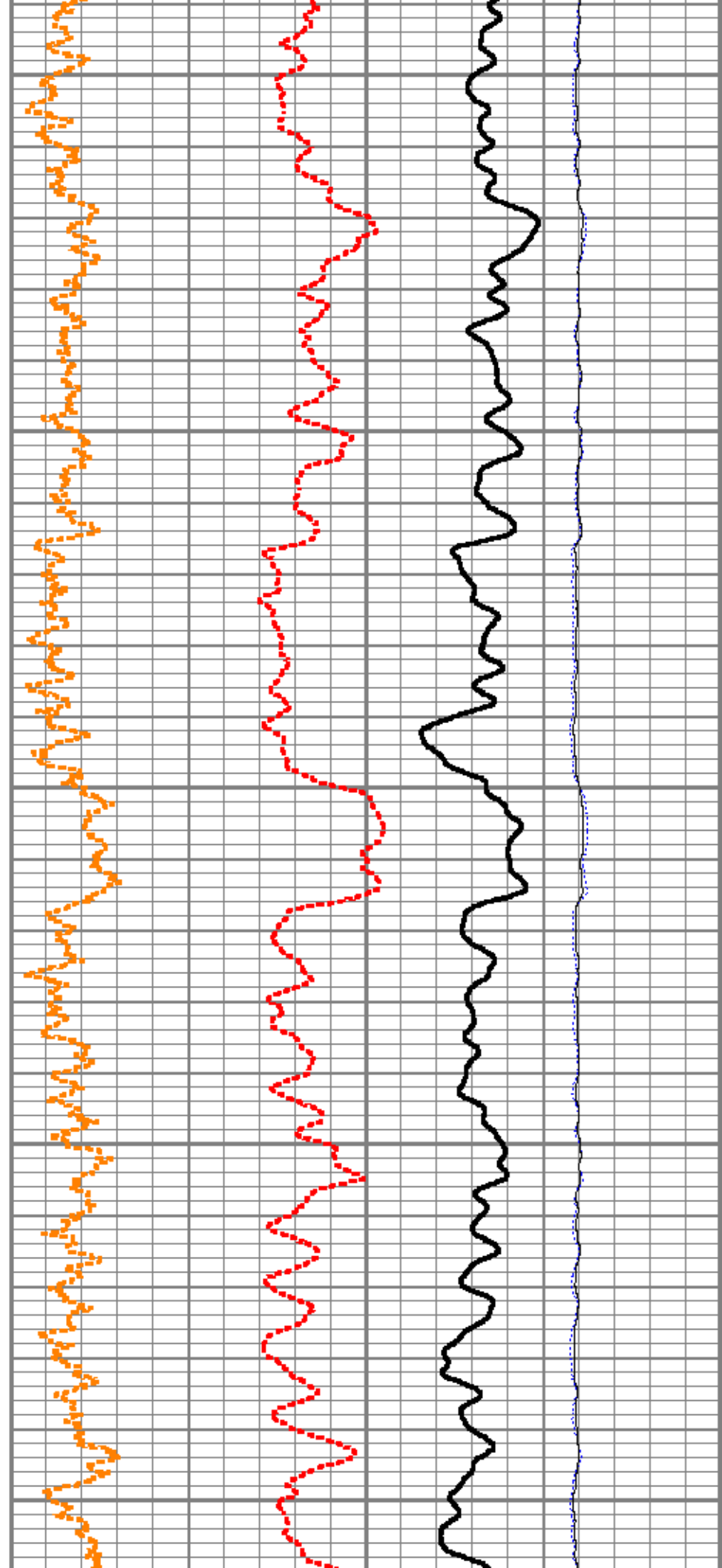


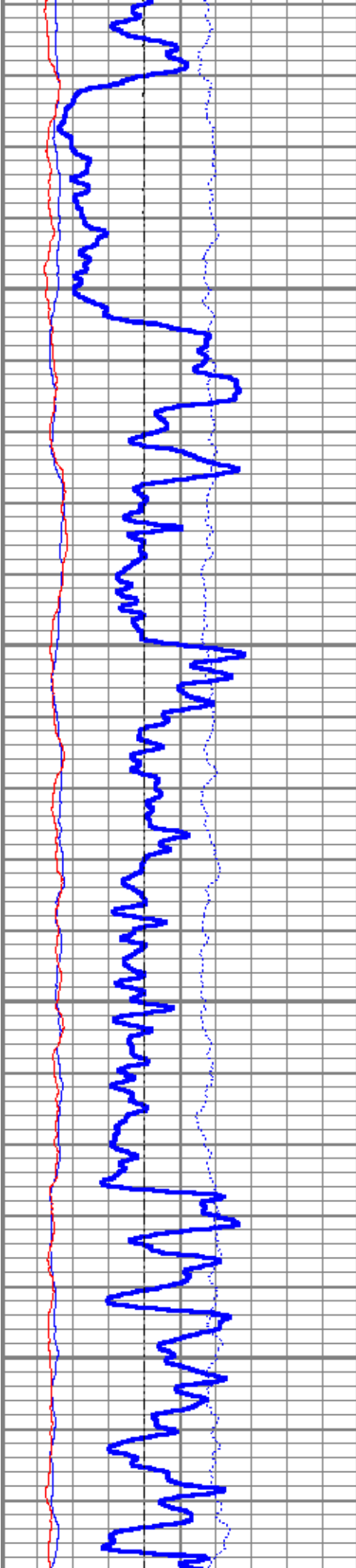


5400

5500

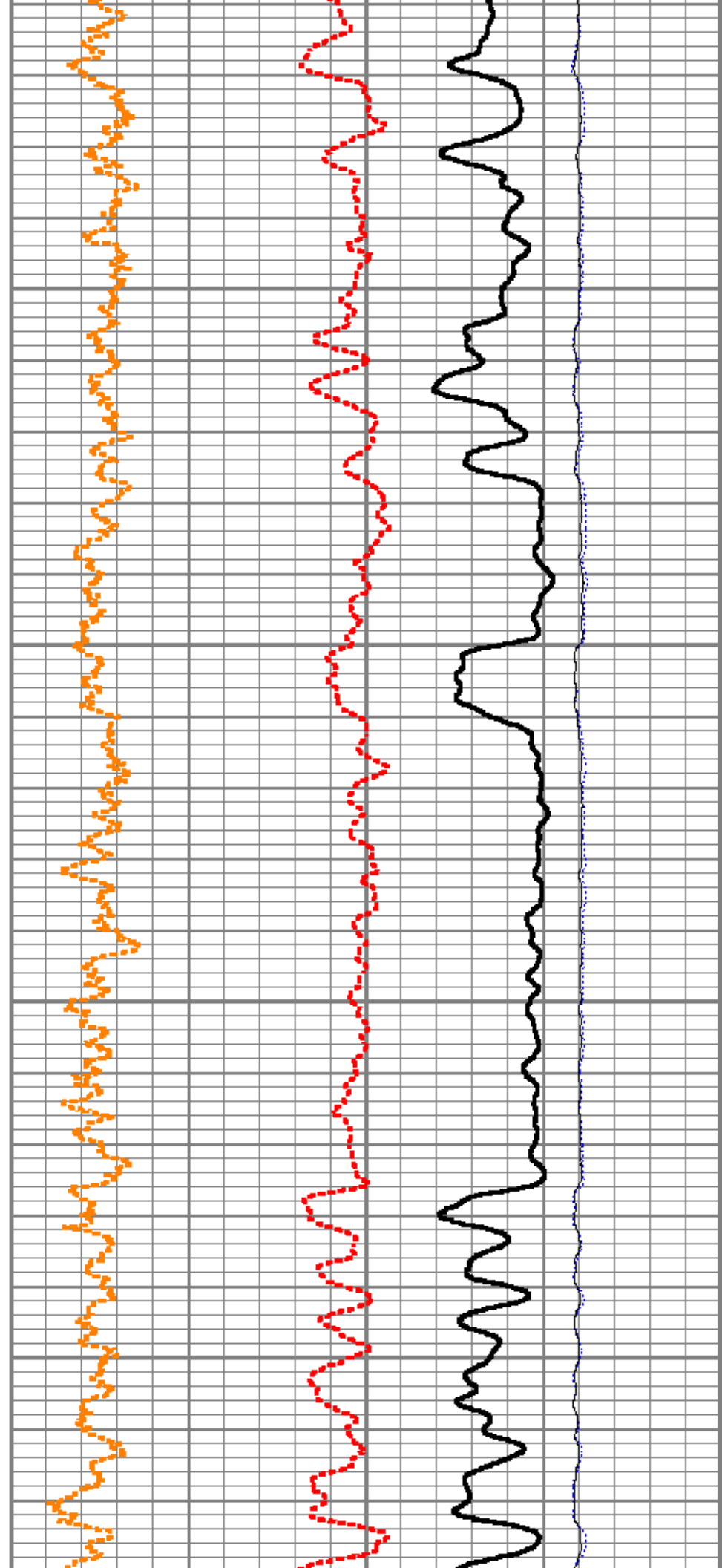
5600

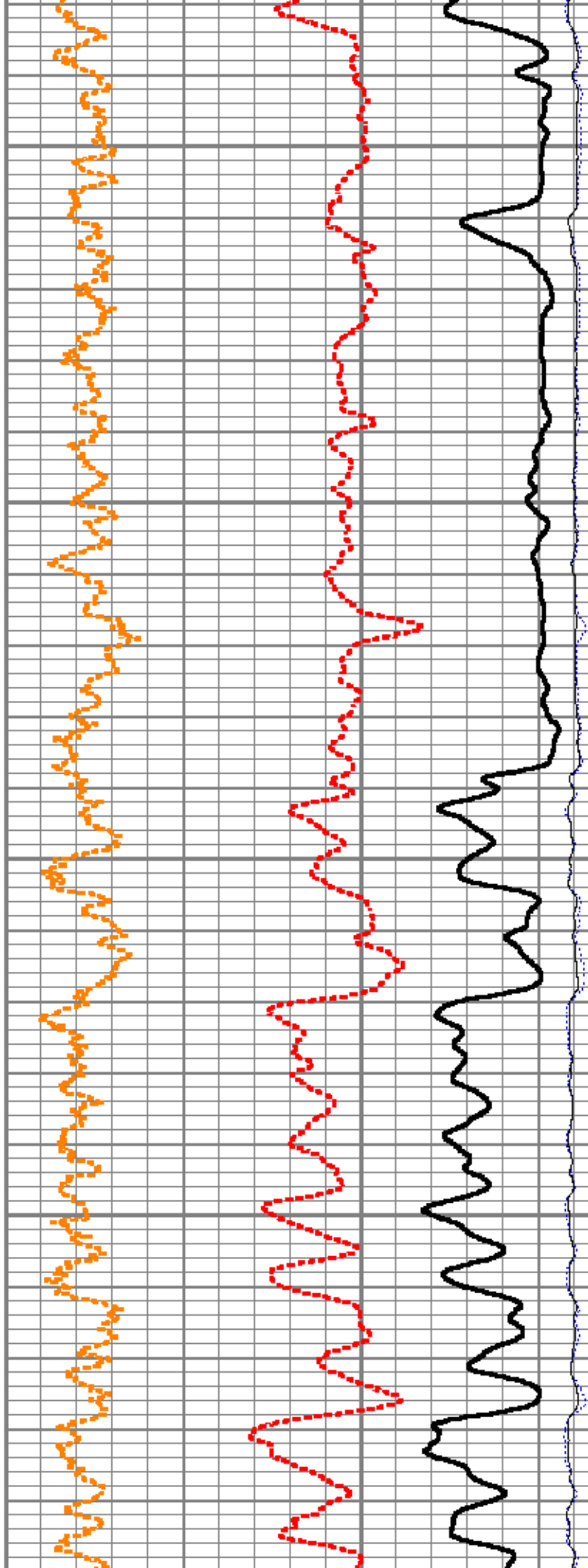




5700

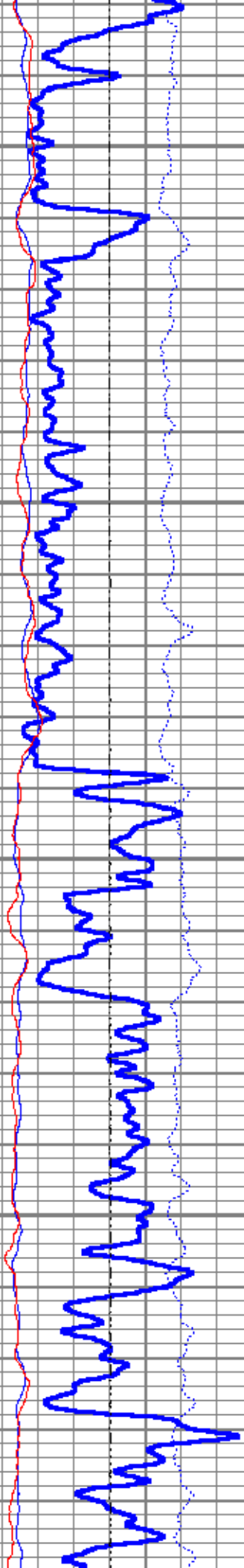
5800

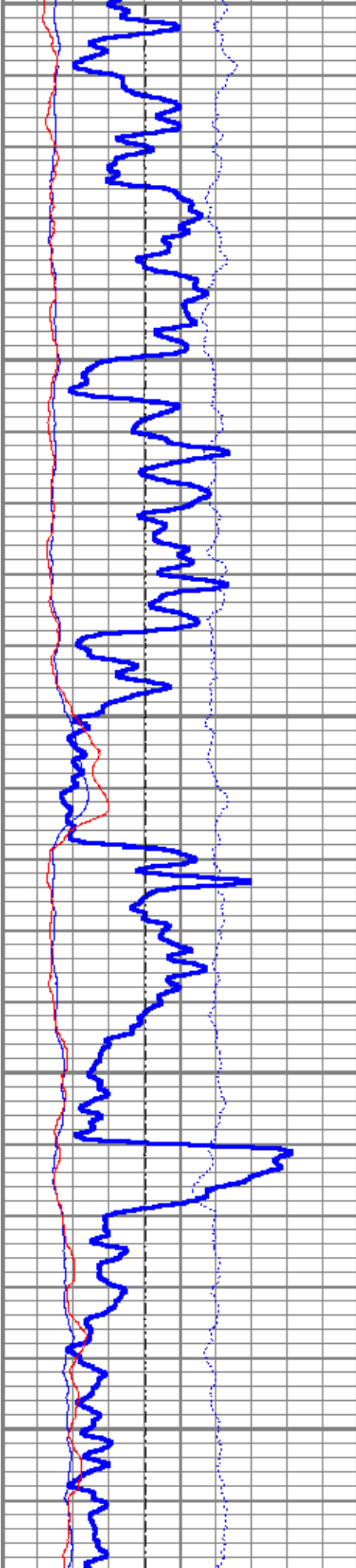




5900

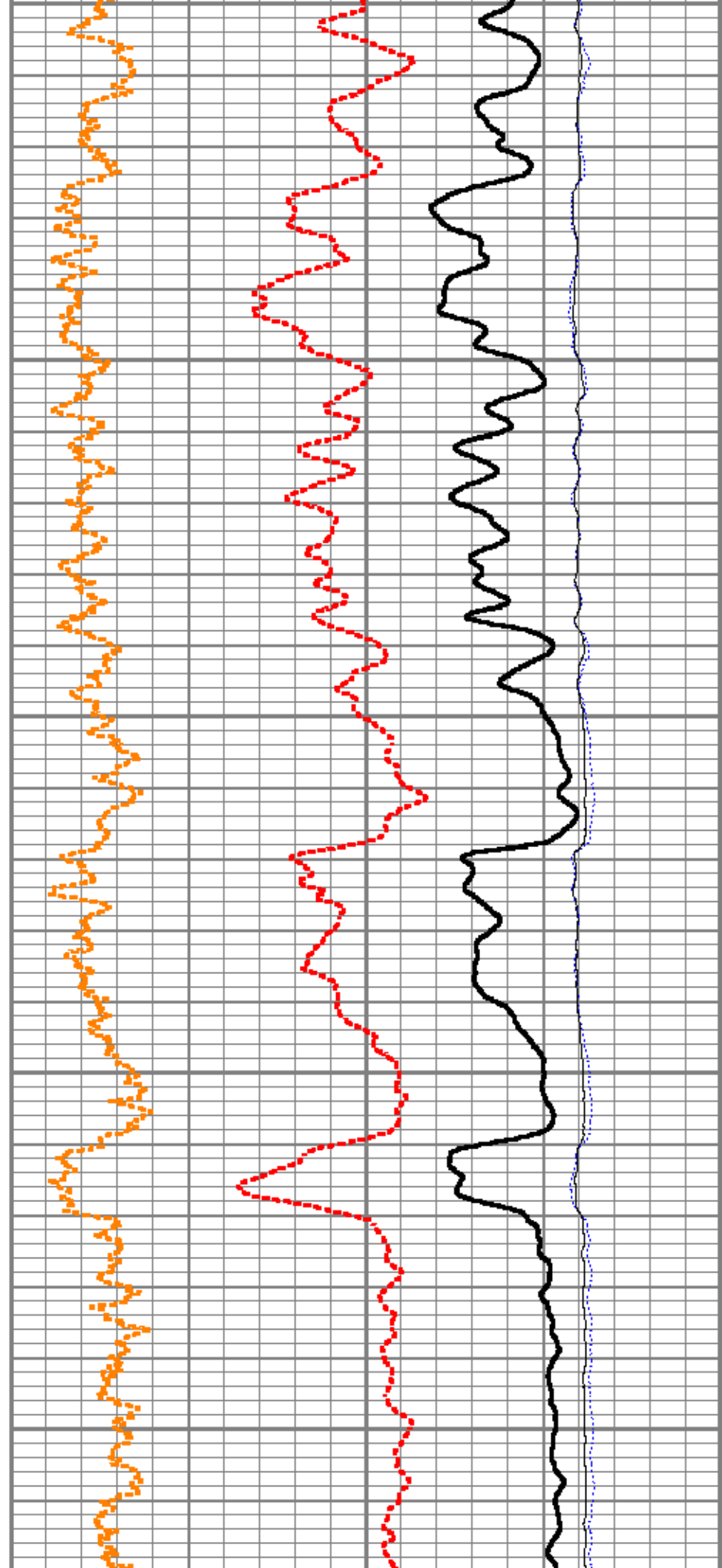
6000



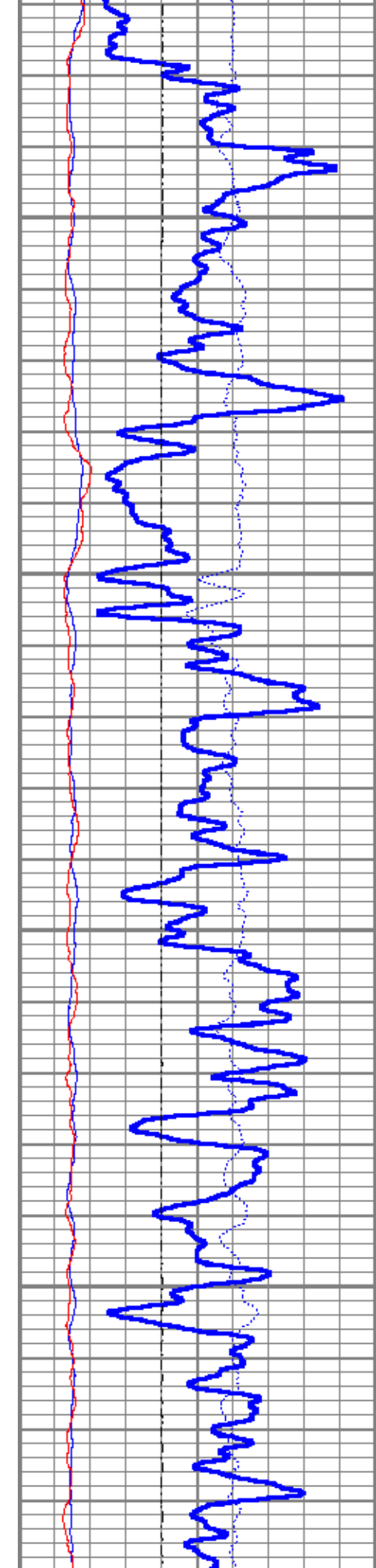


6100

6200

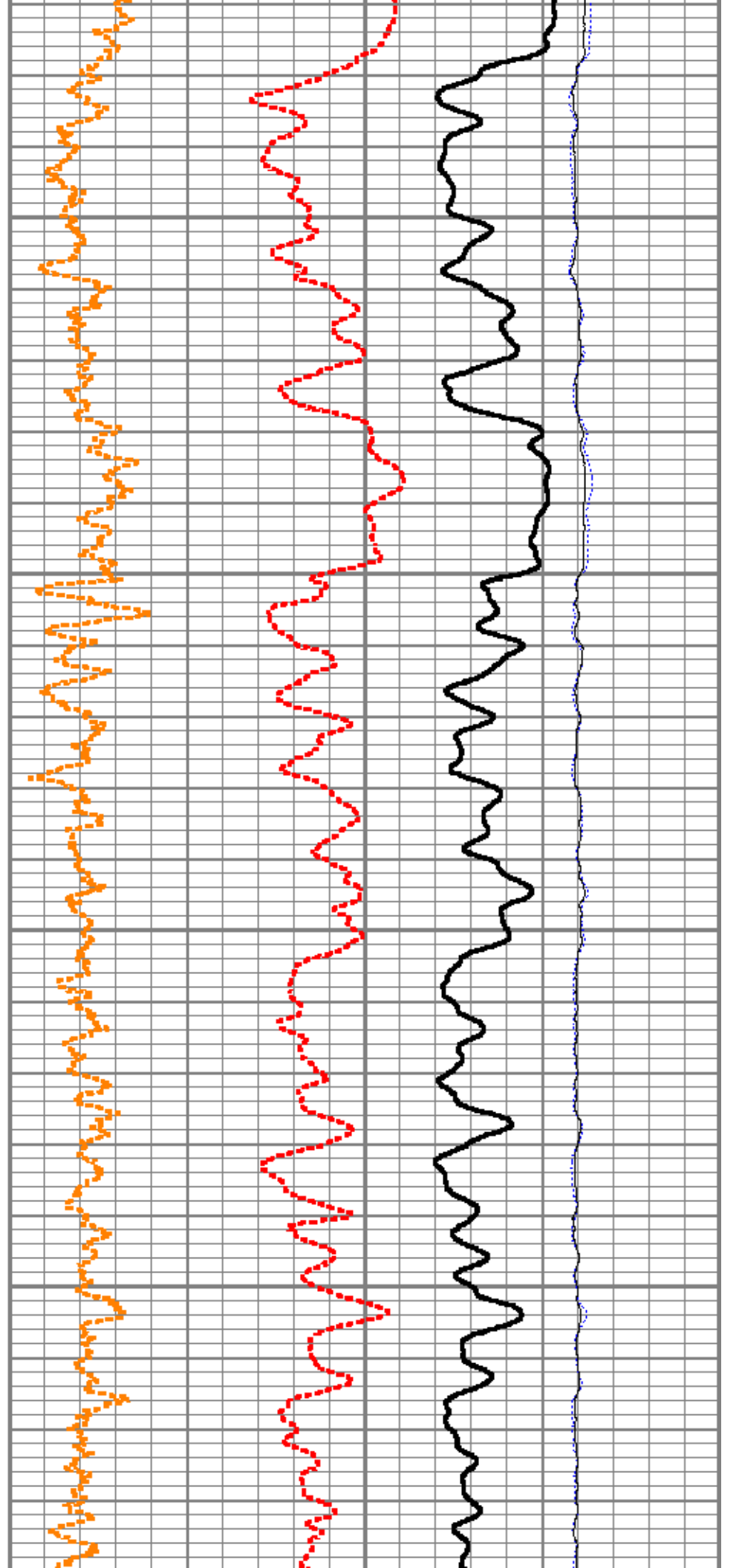




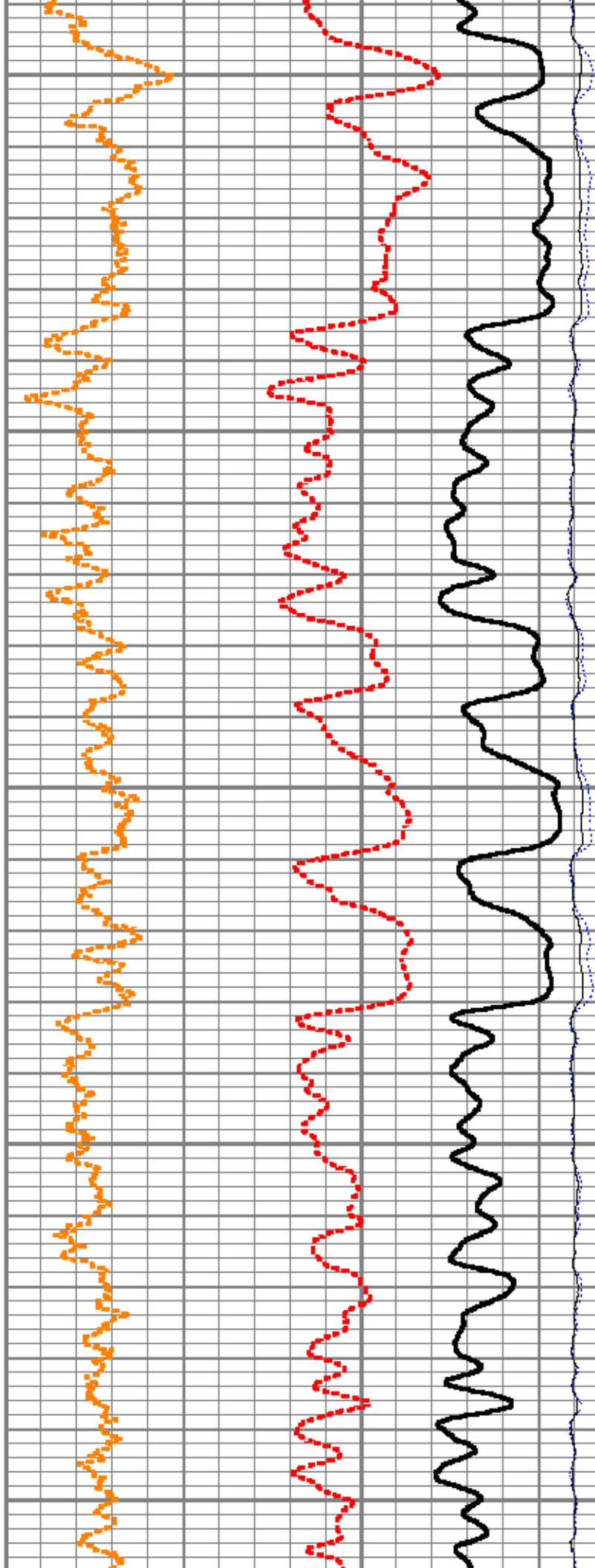
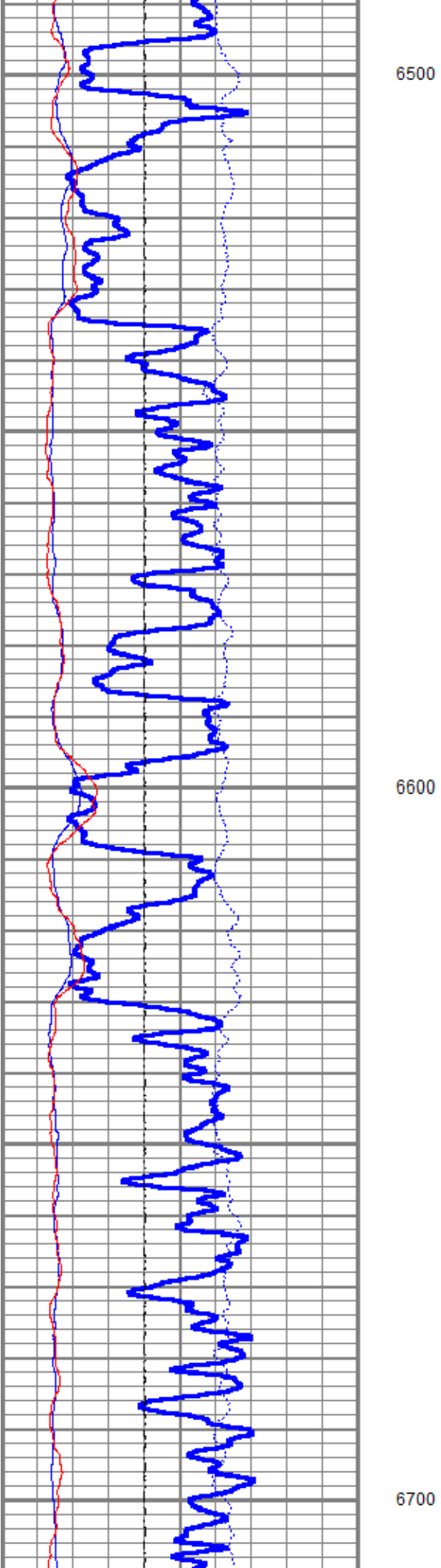


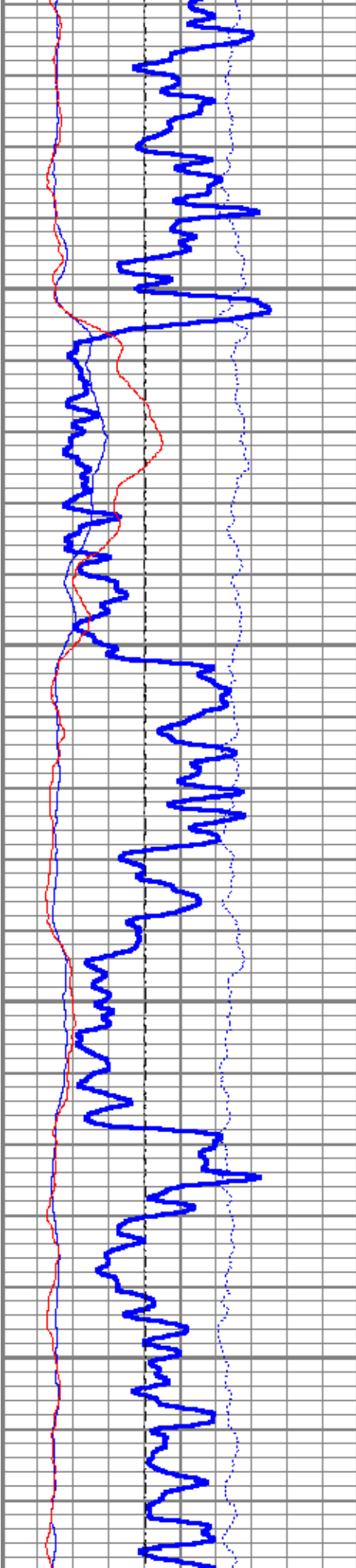
6300

6400



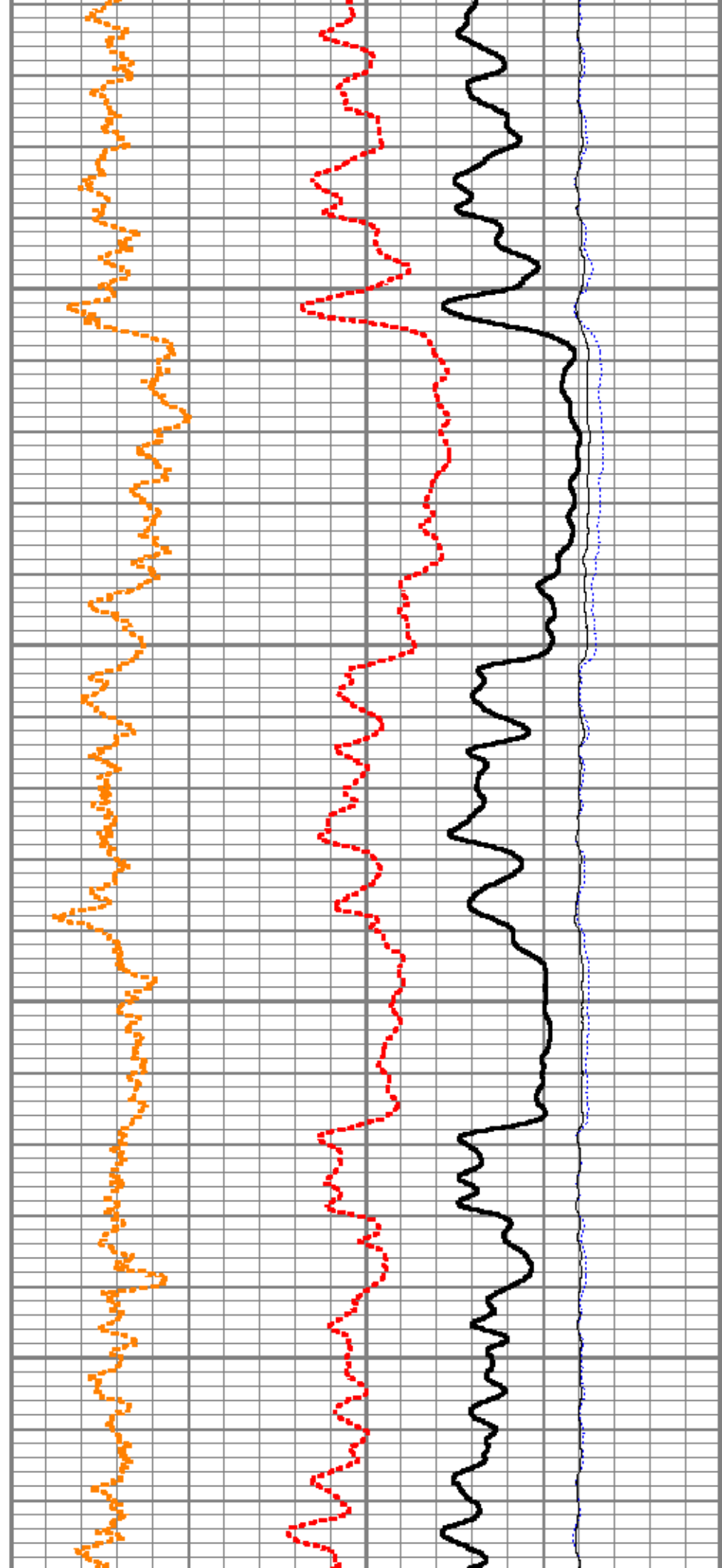


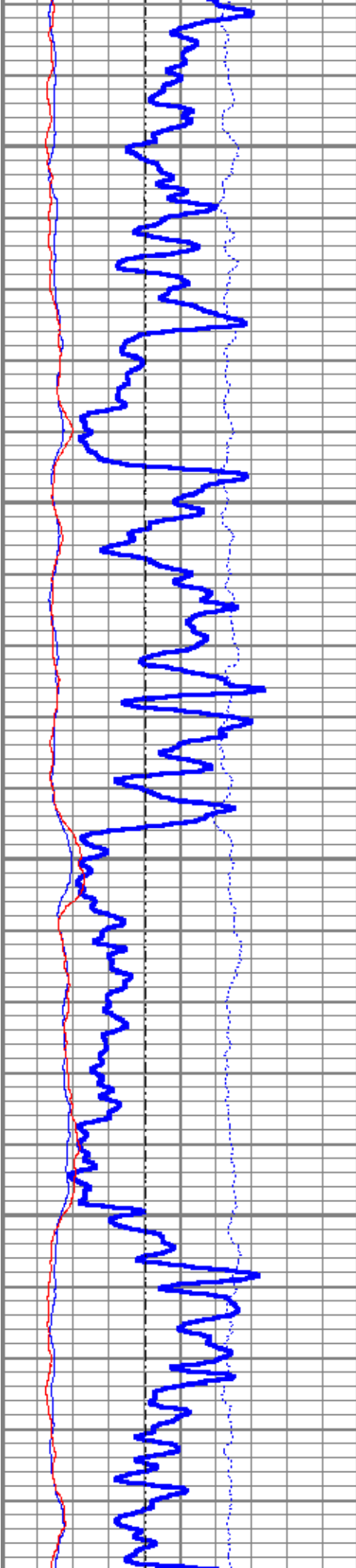




6800

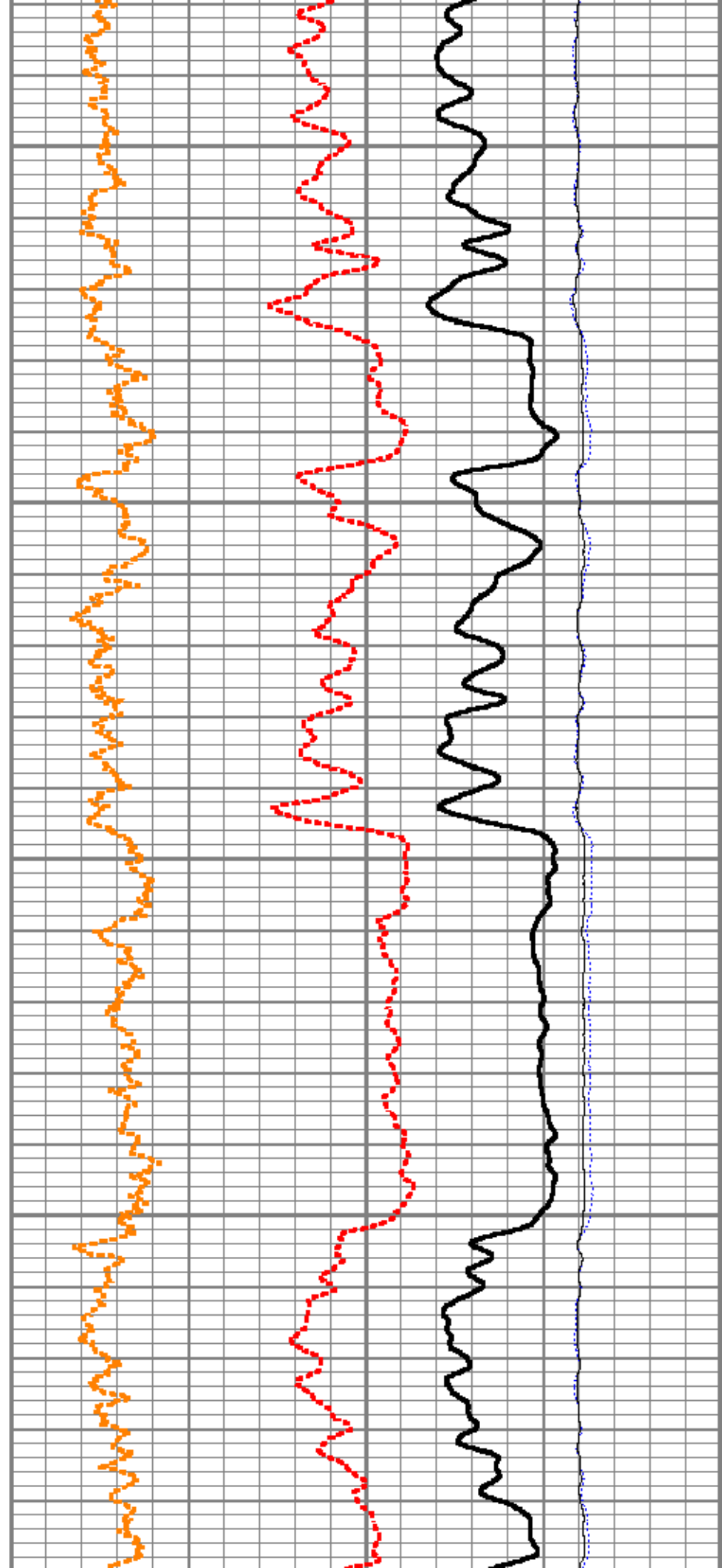
6900

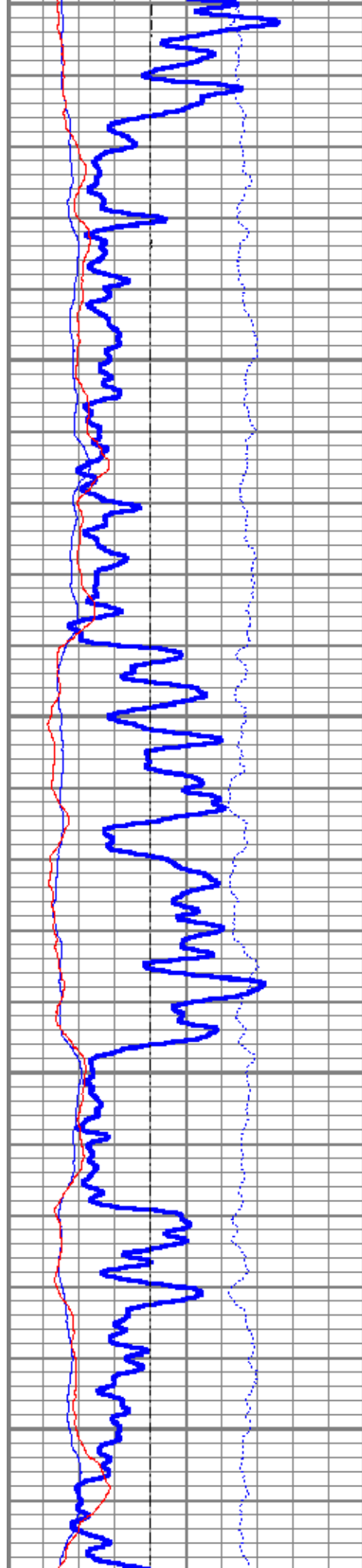




7000

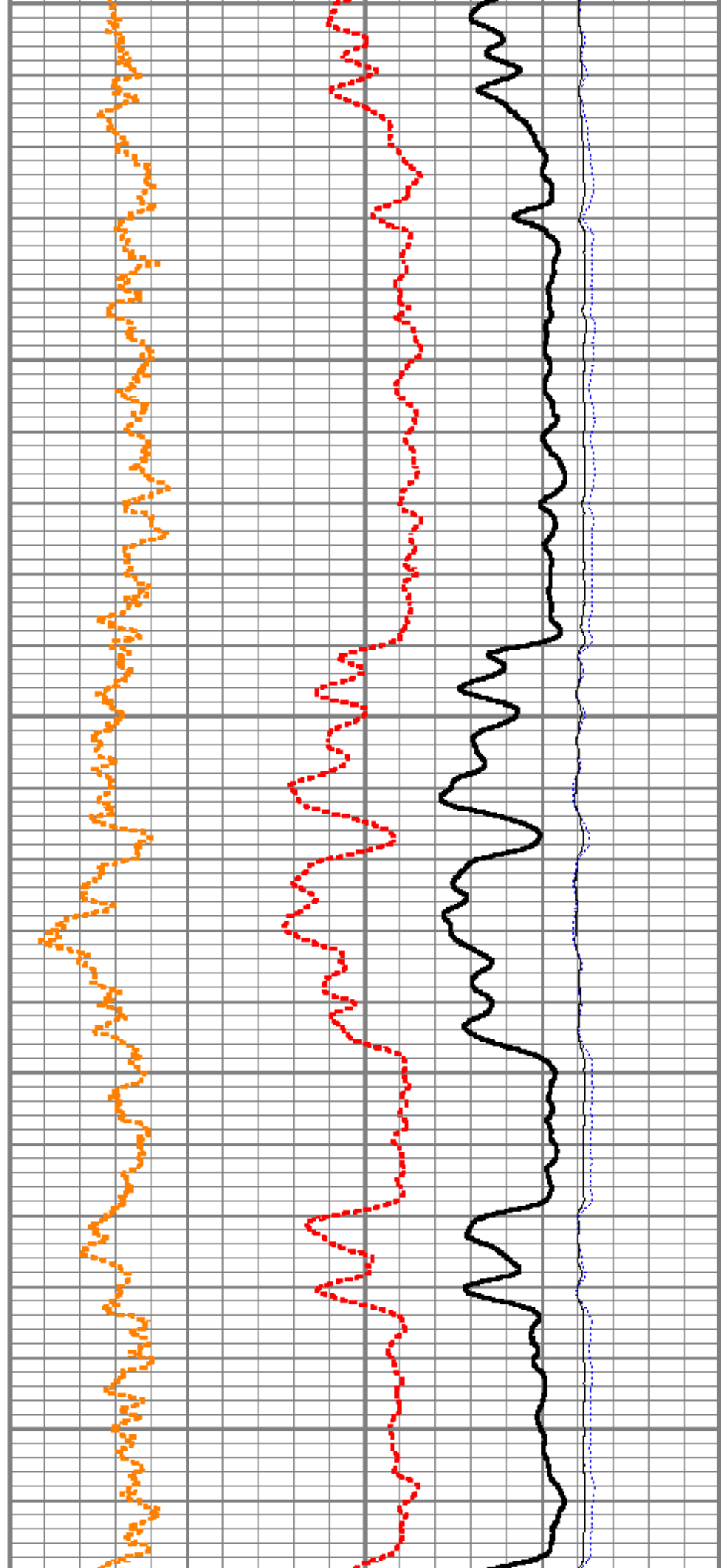
7100

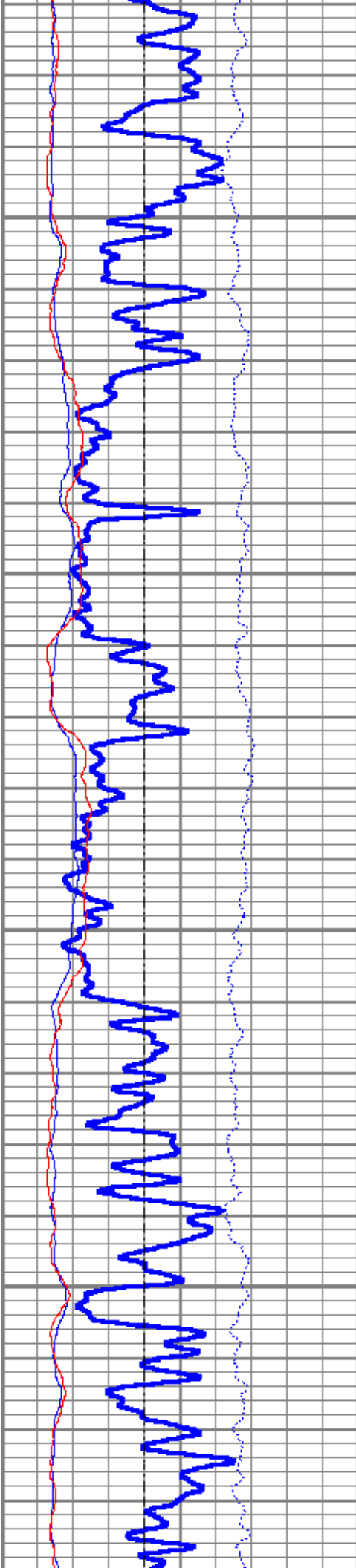




7200

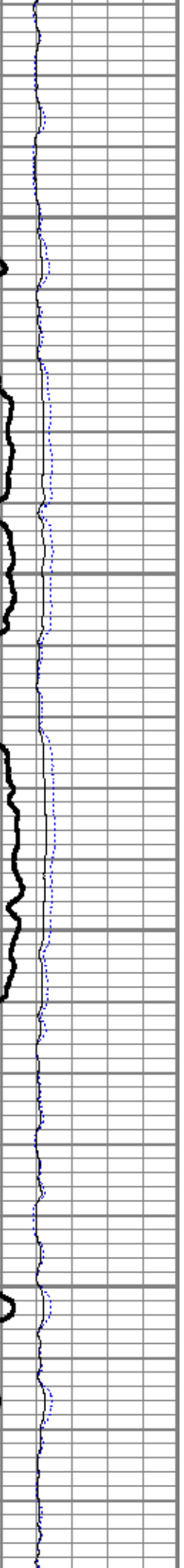
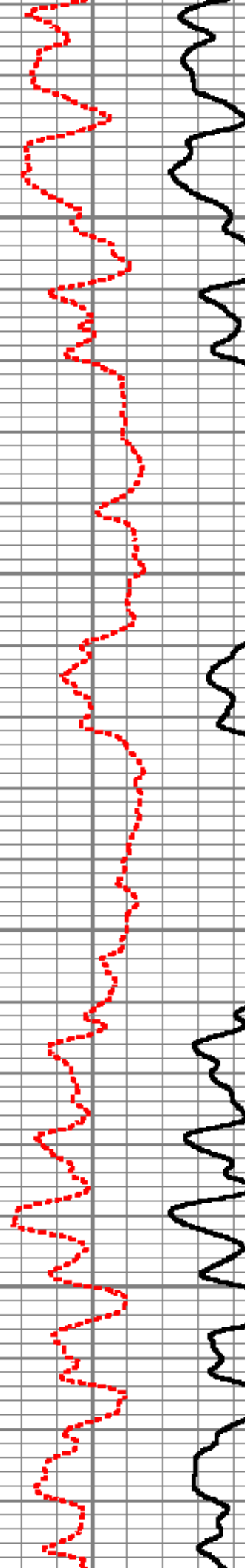
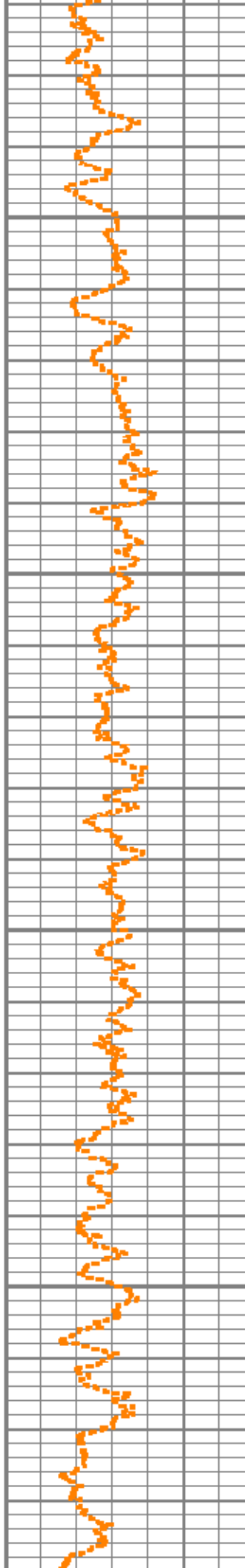
7300

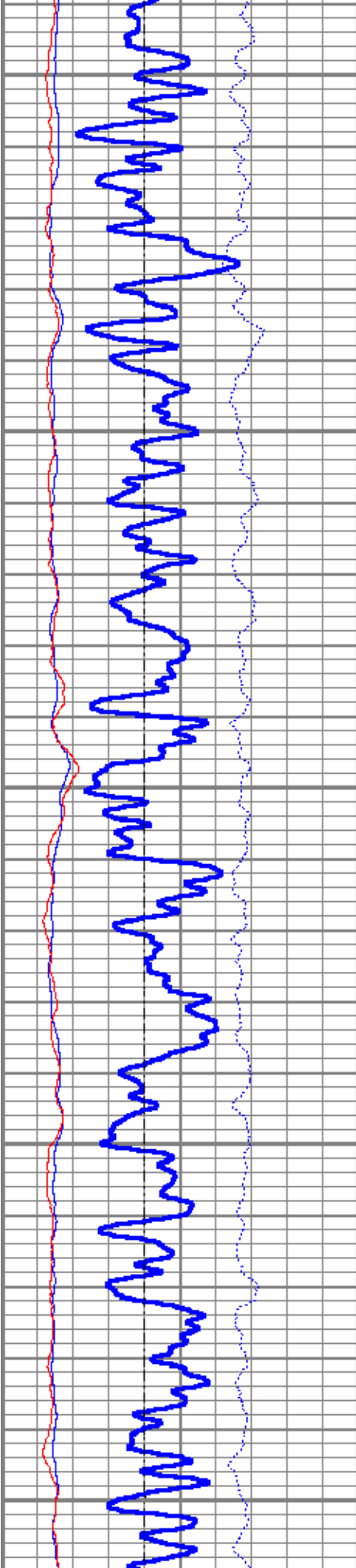




7400

7500

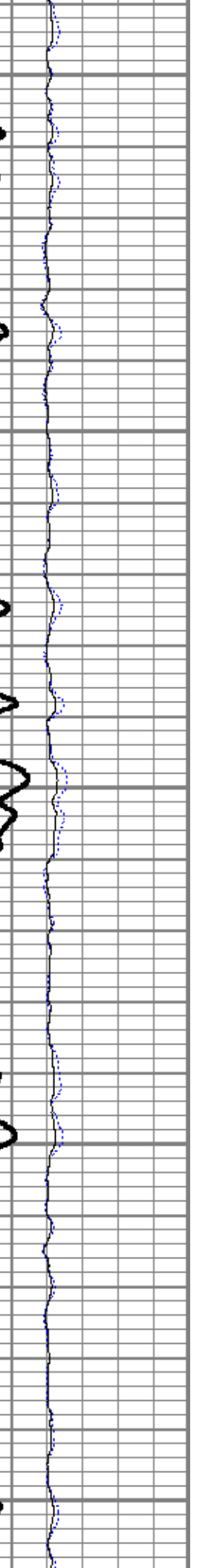
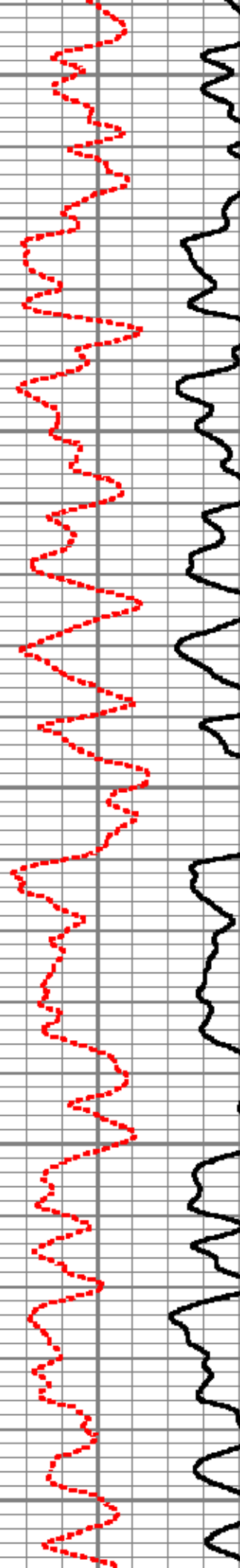
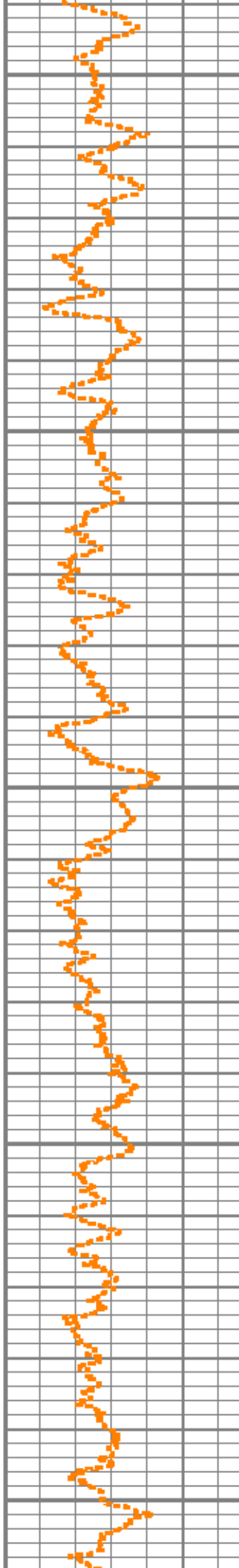


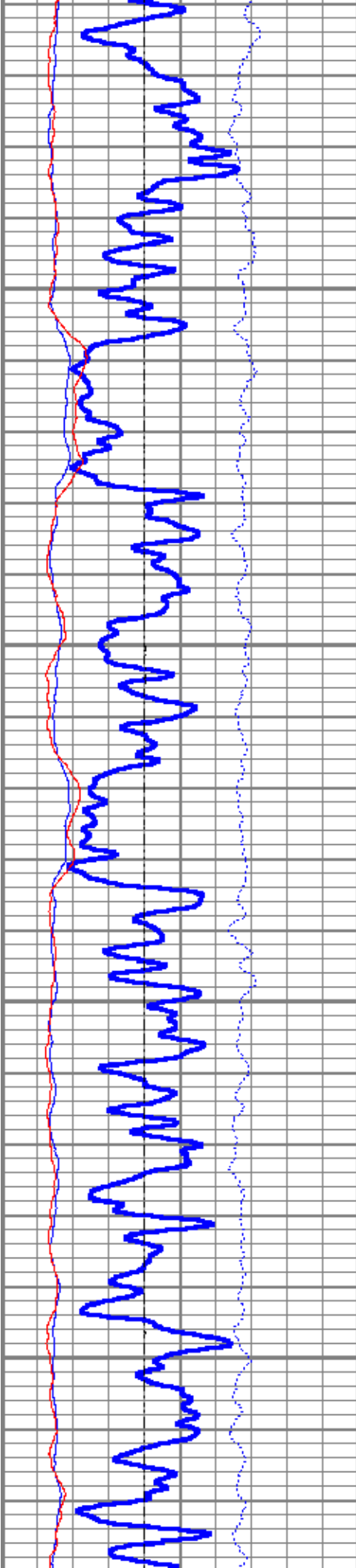


7600

7700

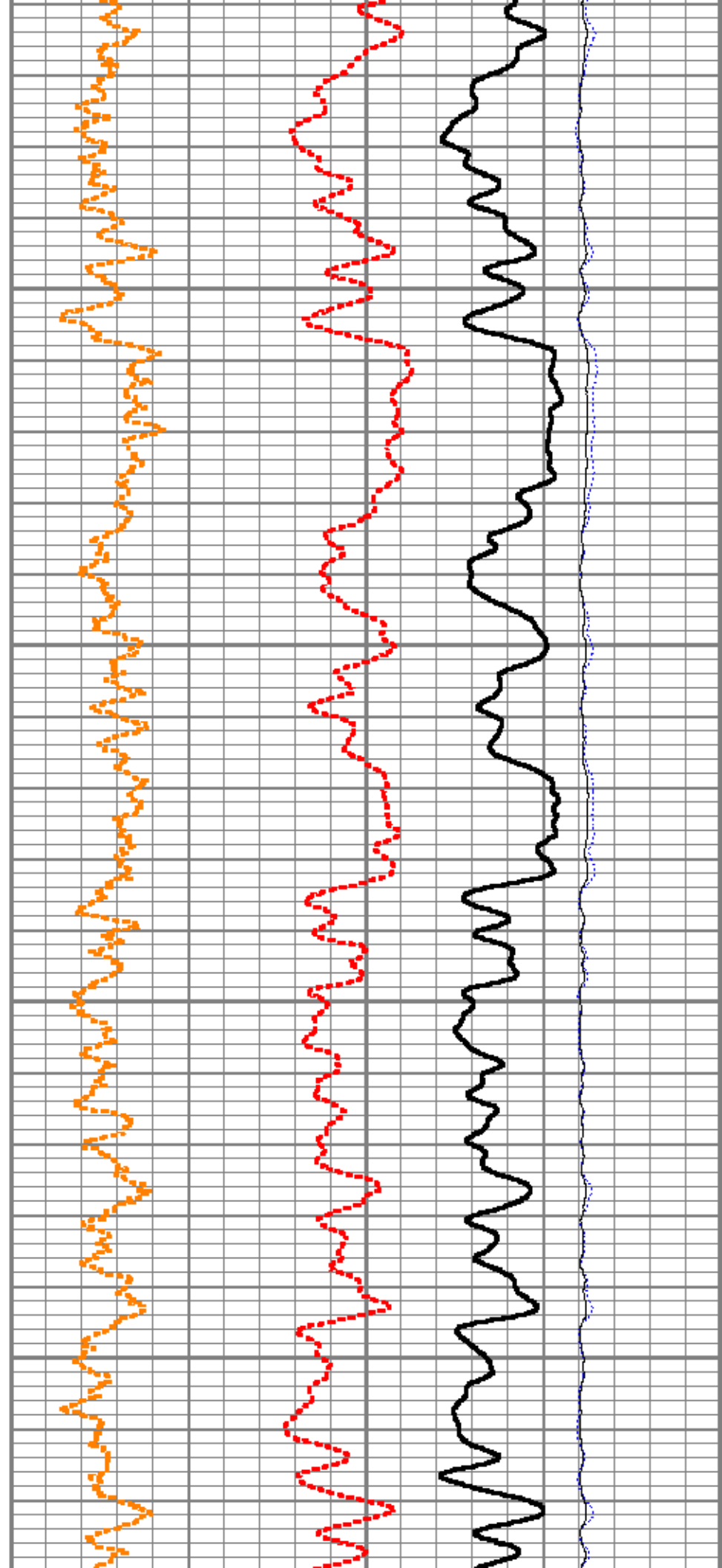
7800



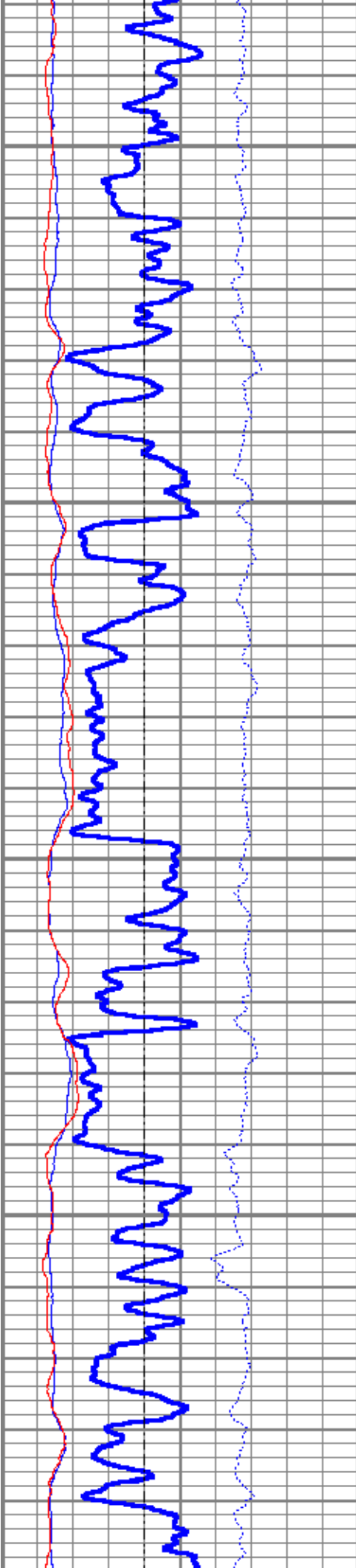


7900

8000

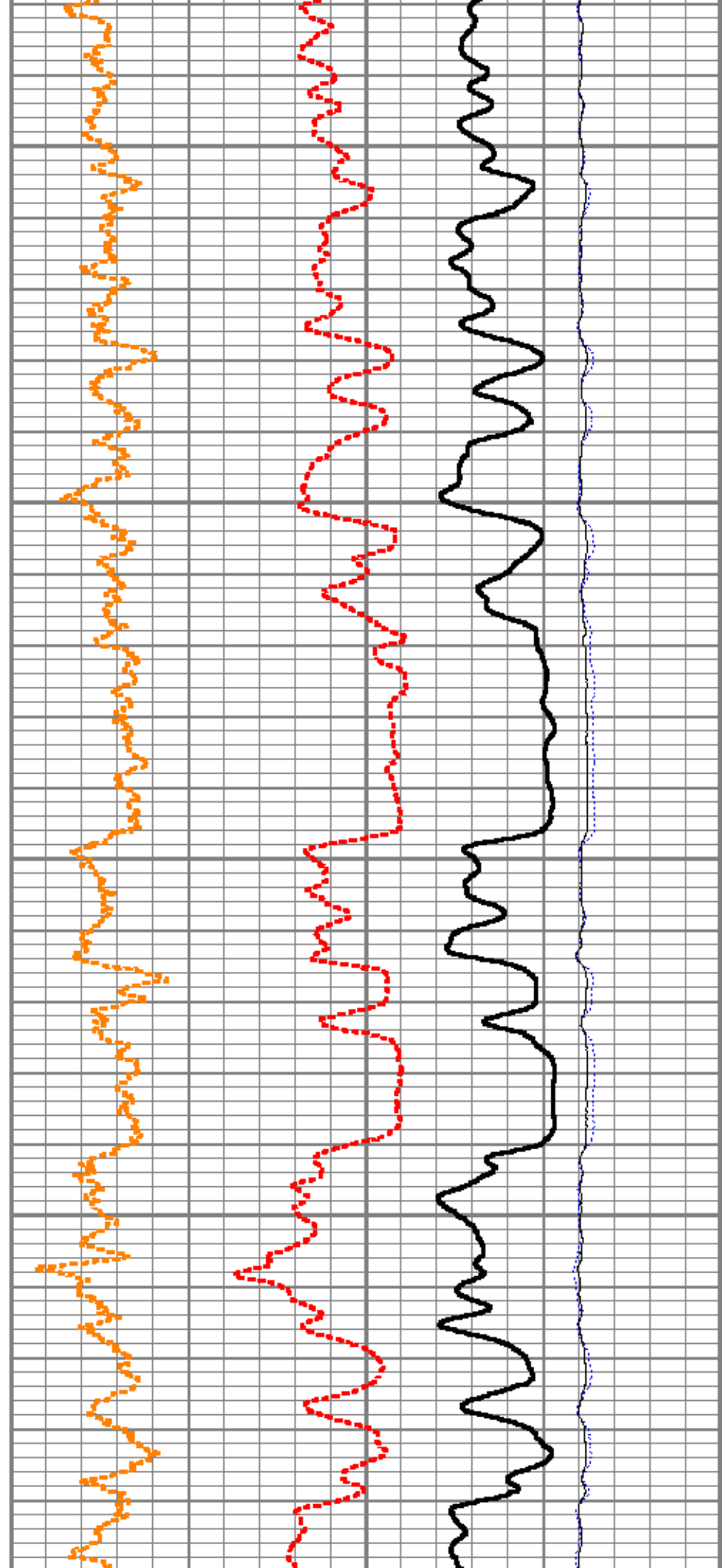


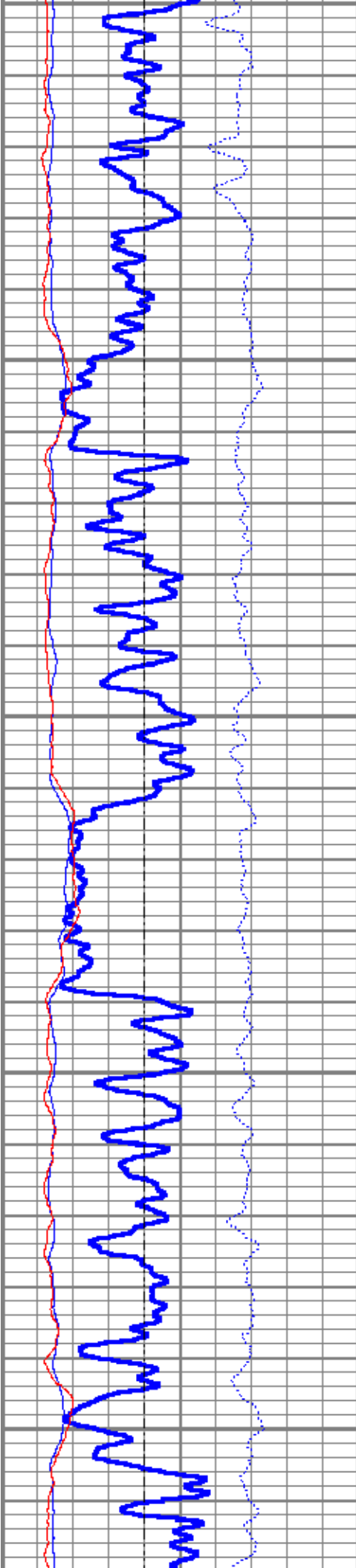




8100

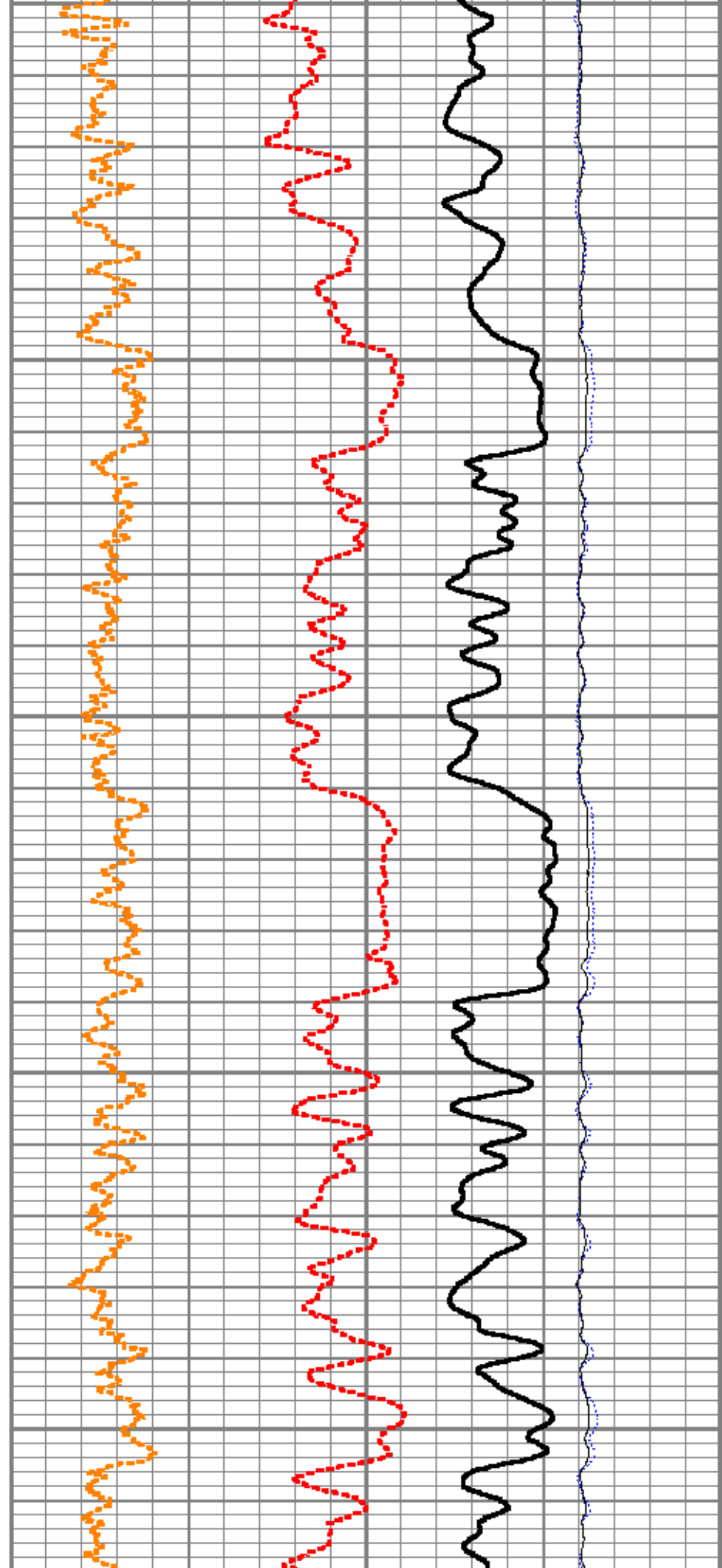
8200

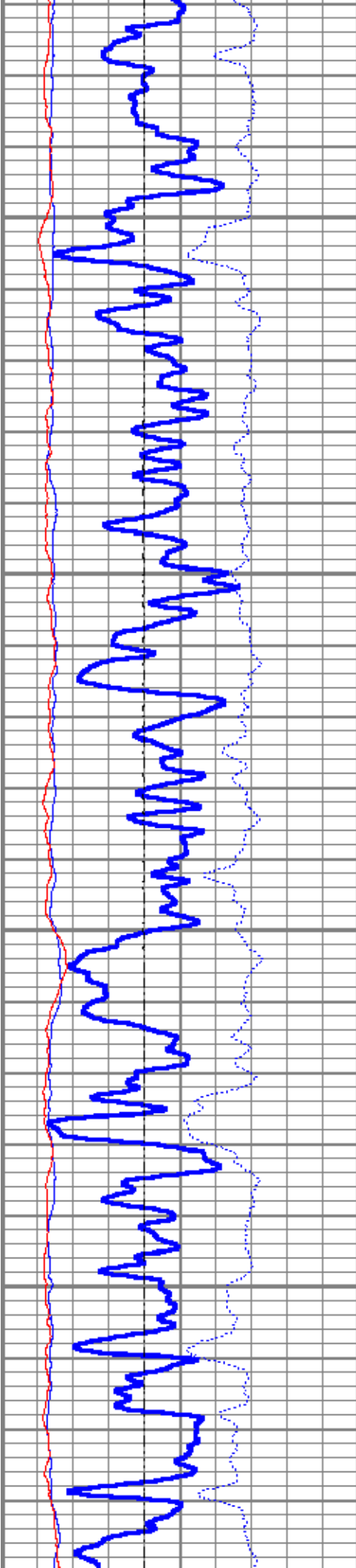




8300

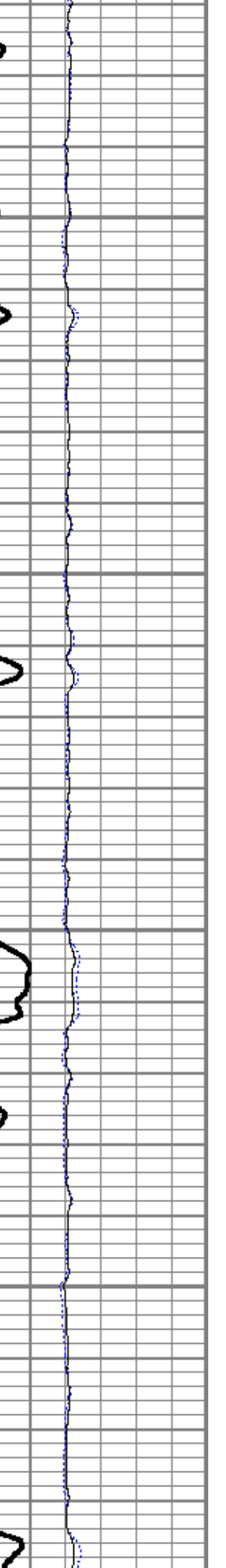
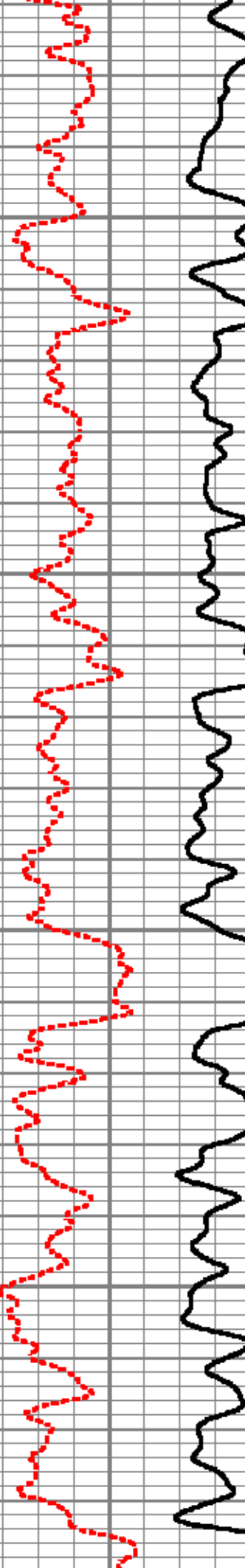
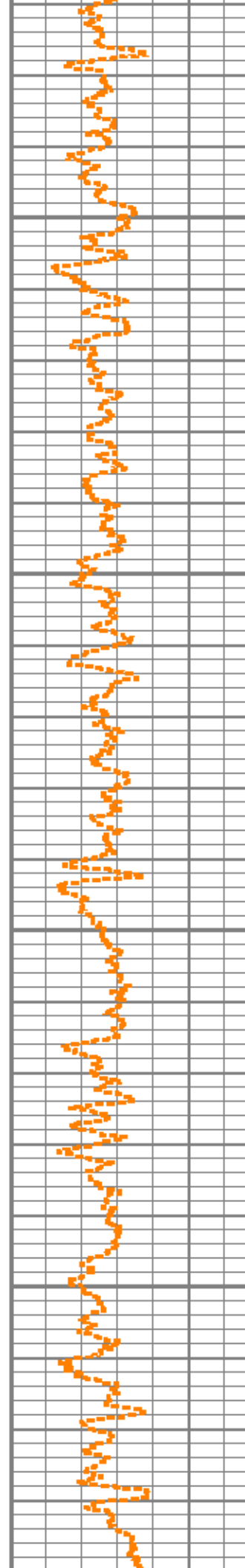
8400

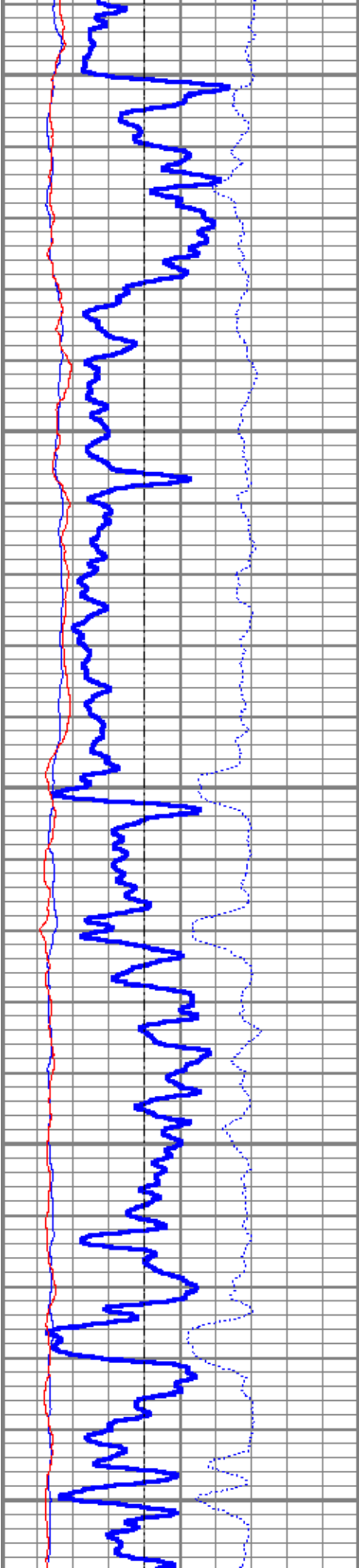




8500

8600

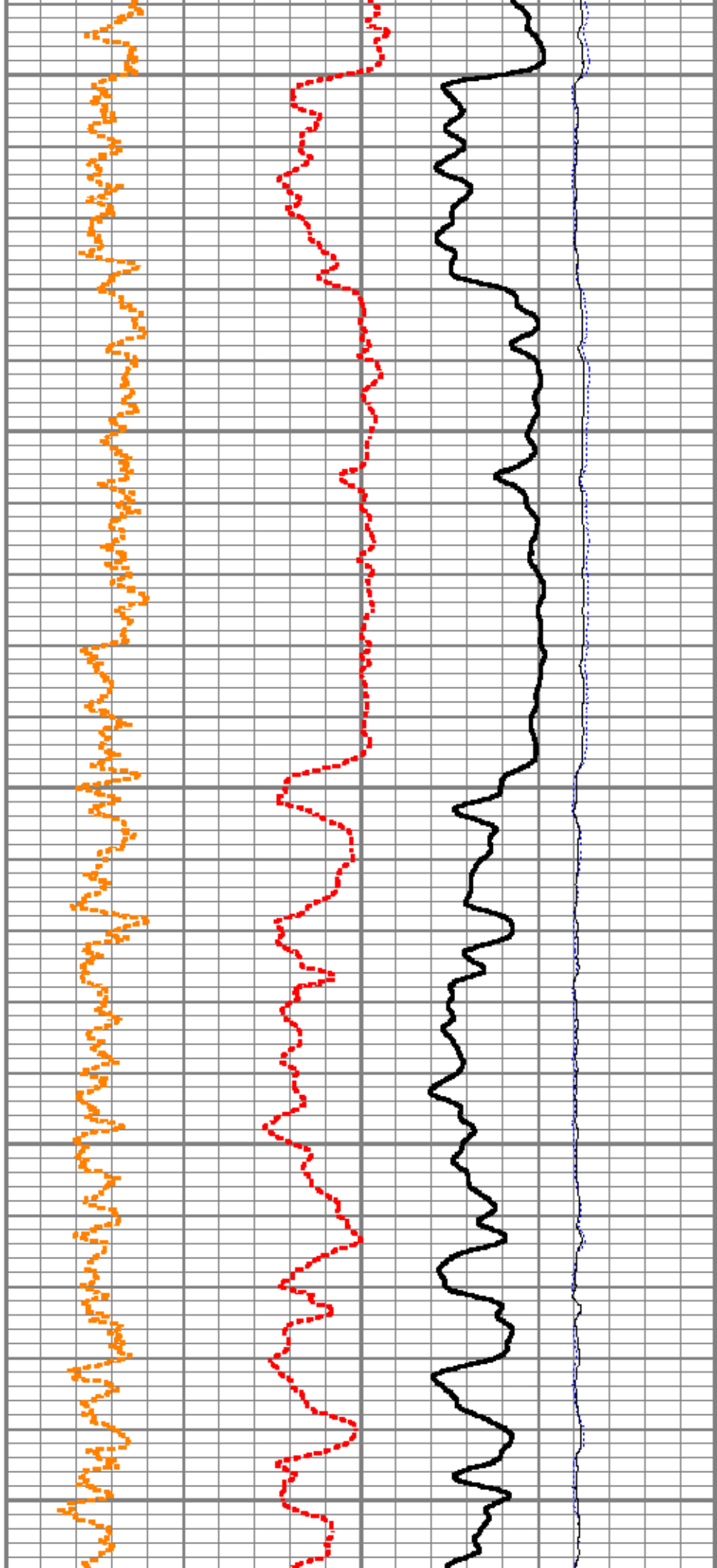


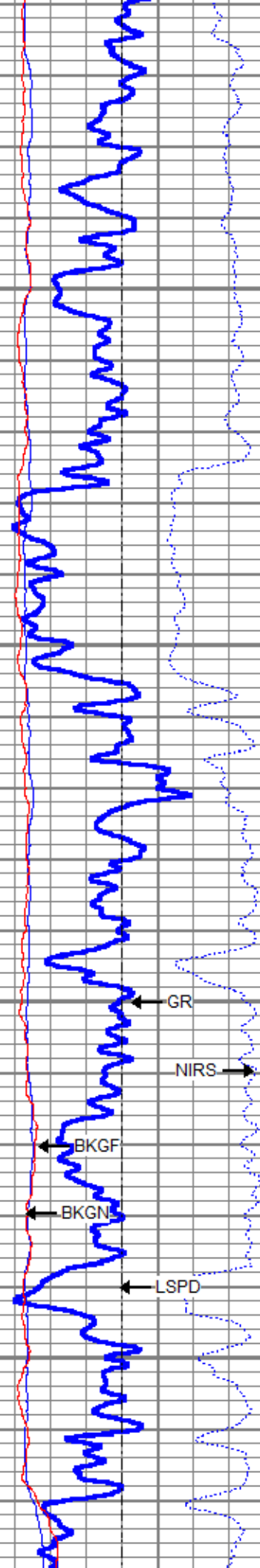


8700

8800

8900





GR

NIRS

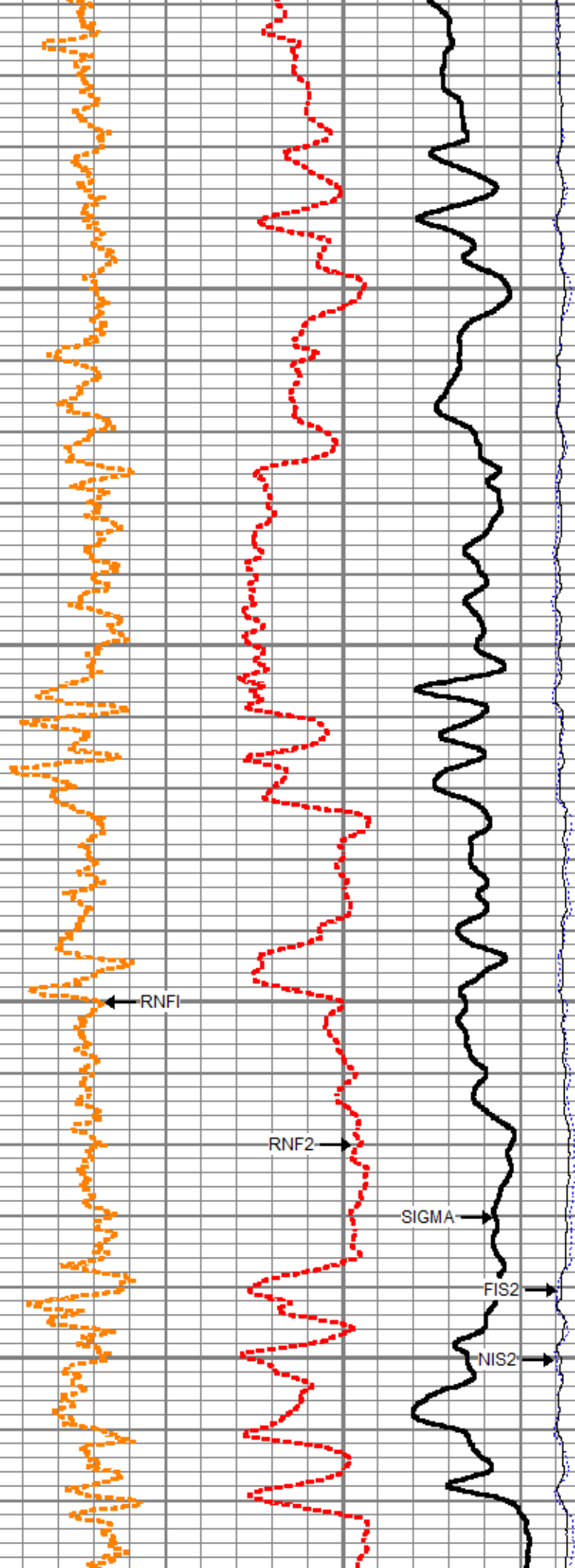
BKGF

BKGN

LSPD

9000

9100



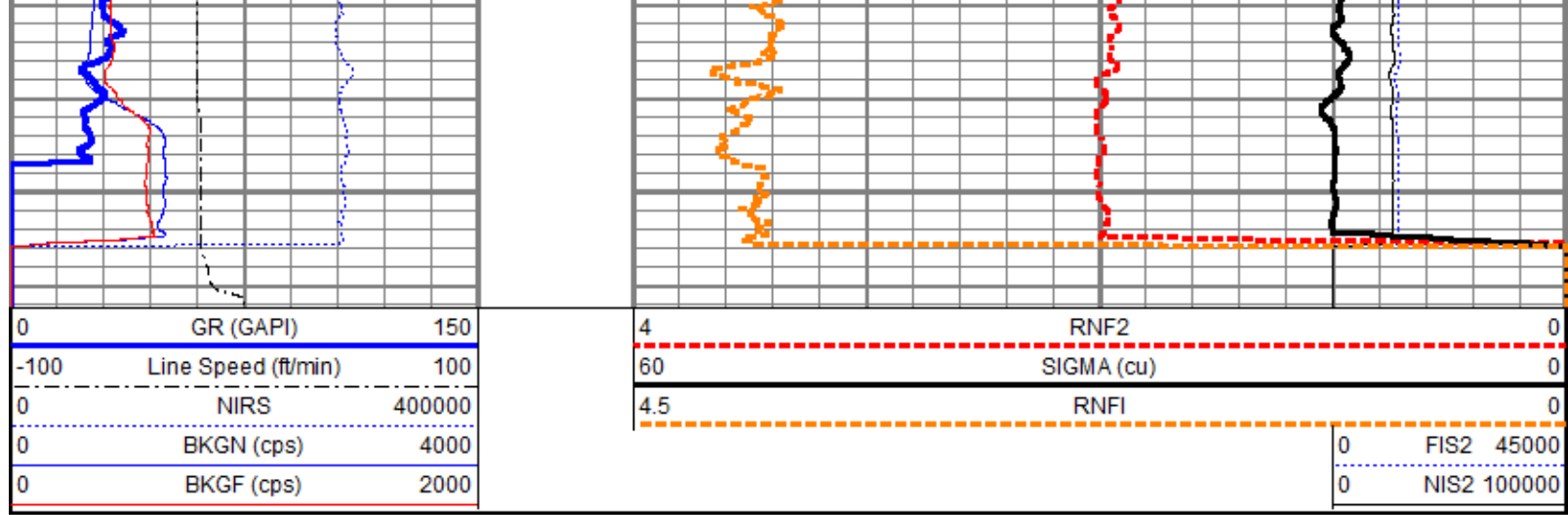
RNFI

RNF2

SIGMA

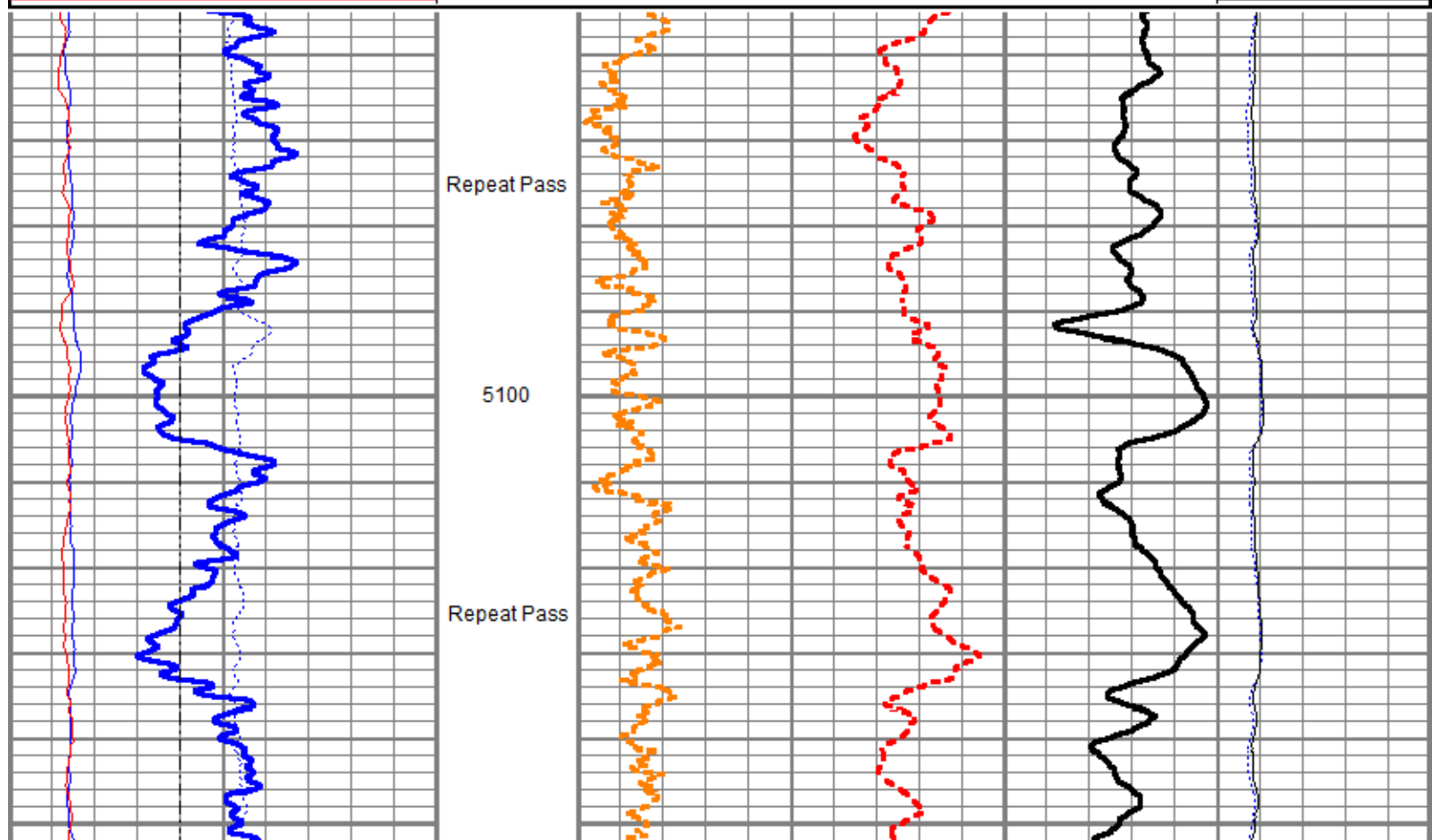
FIS2

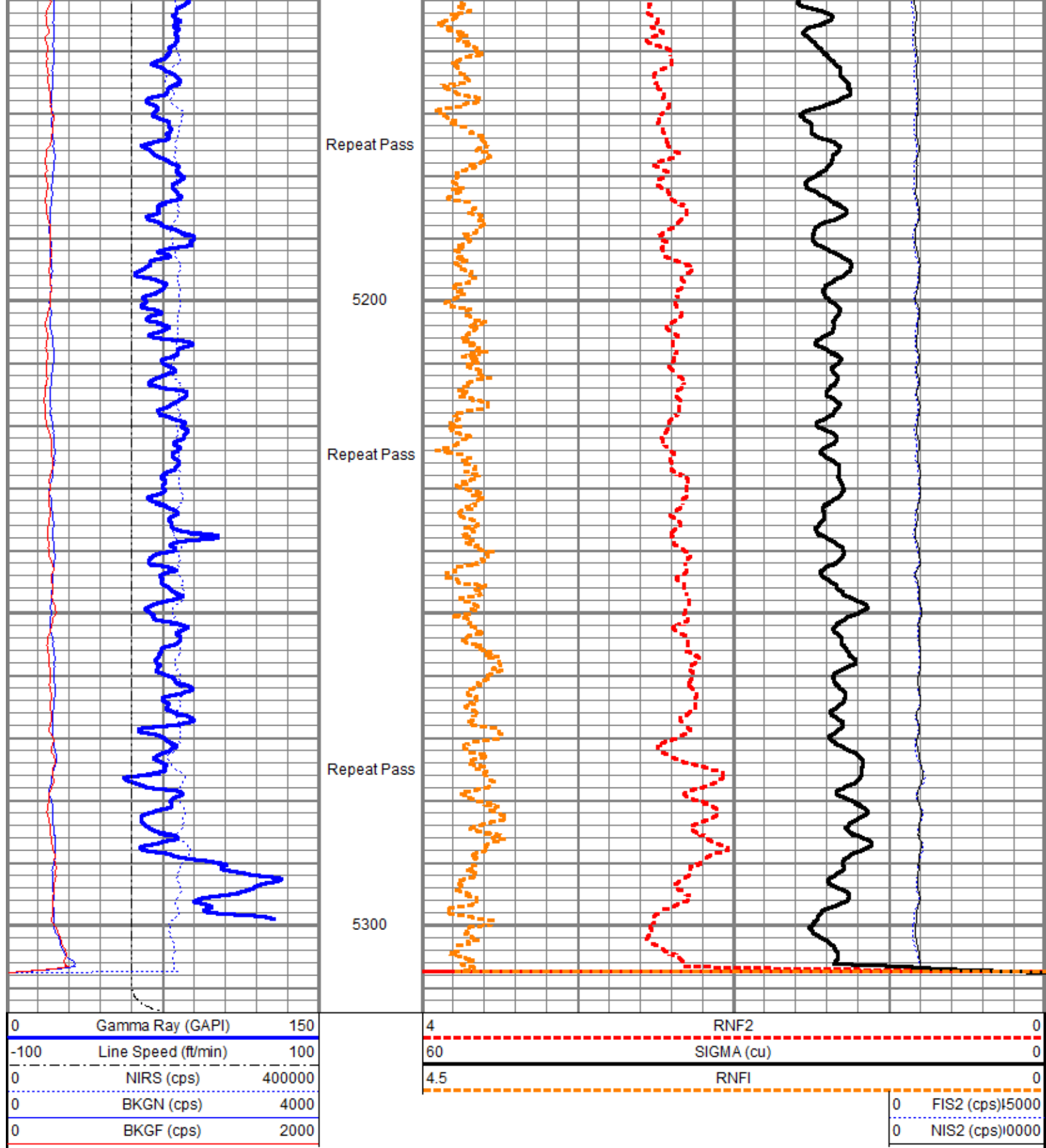
NIS2




# Repeat Pass

Database File: 02\_tep/federal pa 432-24\tep\_federal pa 432-24\_pn\_11-1-18 (1)\tep\_federal pa 432-24\_pn\_11-01-18.db  
 Dataset Pathname: repeat.2  
 Presentation Format: ros\_pdn\_hunter  
 Dataset Creation: Fri Nov 02 02:26:57 2018  
 Charted by: Depth in Feet scaled 1:240





Sensor	Offset (ft)	Schematic	Description	Length (ft)	O.D. (in)	Weight (lb)
			Titan CHD-16875 GO Titan 1-11/16" Assembled Electric Cable Head w/ 1" Fishing Neck	1.03	1.69	5.40
			HWS TCU-002 (001705)	2.30	1.69	10.87



Calibration Report	
Database File	c:\programdata\warrior\data\02_tep\federal pa 432-24\tep_federal pa 432-24_pn_11-1-18 (1)\tep_federal pa 432-24_pn_11-01-18
Dataset Pathname	main.2
Dataset Creation	Fri Nov 02 02:33:13 2018
Gamma Ray Calibration Report	

Serial Number:	001475
Tool Model:	001
Performed:	Fri Oct 19 14:55:00 2018

Calibrator Value:	1.0	GAPI
-------------------	-----	------

Background Reading:	0.0
Calibrator Reading:	1.0

Sensitivity:	1.0000	GAPI/
--------------	--------	-------



Company	TEP Rocky Mountain LLC
Well	Federal PA 432-24
Field	Parachute
County	Garfield
State	Colorado