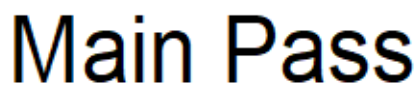


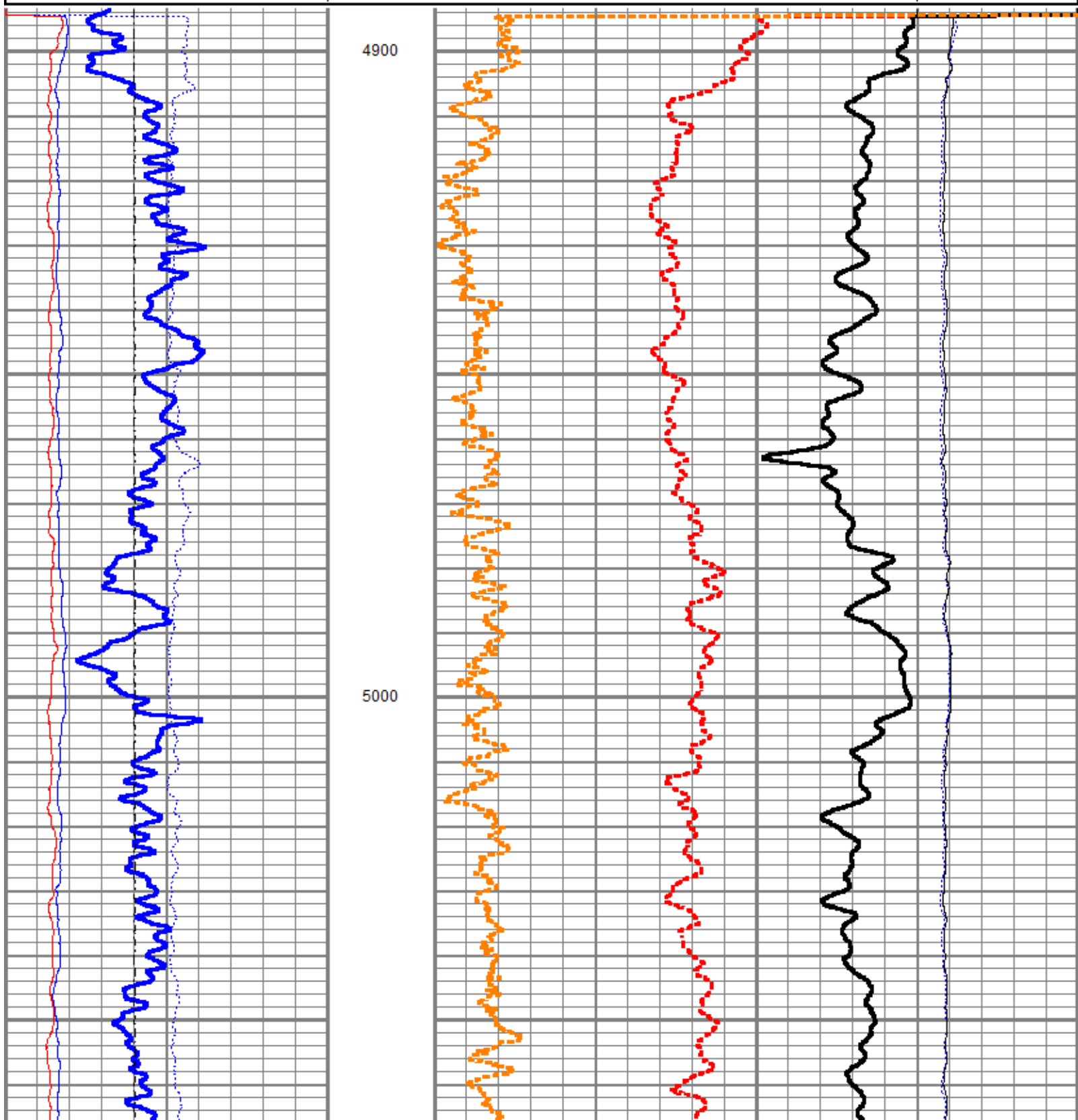
<<< Fold Here >>>
All interpretations are opinions based on inferences from electrical or other measurements and we cannot and do not guarantee the accuracy or correctness of any interpretation, and we shall not, except in the case of gross or willful negligence on our part, be liable or responsible for any loss, costs, damages, or expenses incurred or sustained by anyone resulting from any interpretation made by any of our officers, agents or employees. These interpretations are also subject to our general terms and conditions set out in our current Price Schedule.
Comments
Log ran as per customer request Depth referenced to Reliance Bond Log dated 31-OCT-2018 Log ran from 9032 FT to 4894 FT Pulsed Neutron Data logged with Hunter RAS Tool Thank you for choosing Reliance Oilfield Services, LLC!

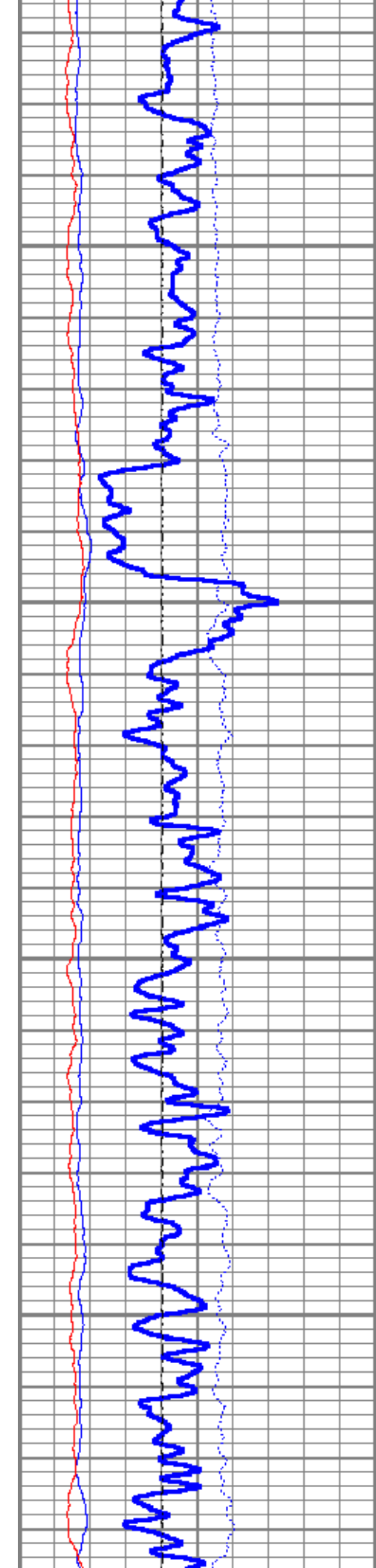


Database File	02_tep\federal pa 333-24\tep_federal pa 333-24_pn_10-2-2018\tep_federal pa 333-24_pn_10-2-2018.db
Dataset Pathname	federal_pa_333-24_pn_shift
Presentation Format	ros_pdn_hunter
Dataset Creation	Sun Nov 04 08:17:43 2018
Charted by	Depth in Feet scaled 1:240

0	GR (GAPI)	150
-100	Line Speed (ft/min)	100
0	NIRS	400000
0	BKGN (cps)	4000
0	BKGF (cps)	2000

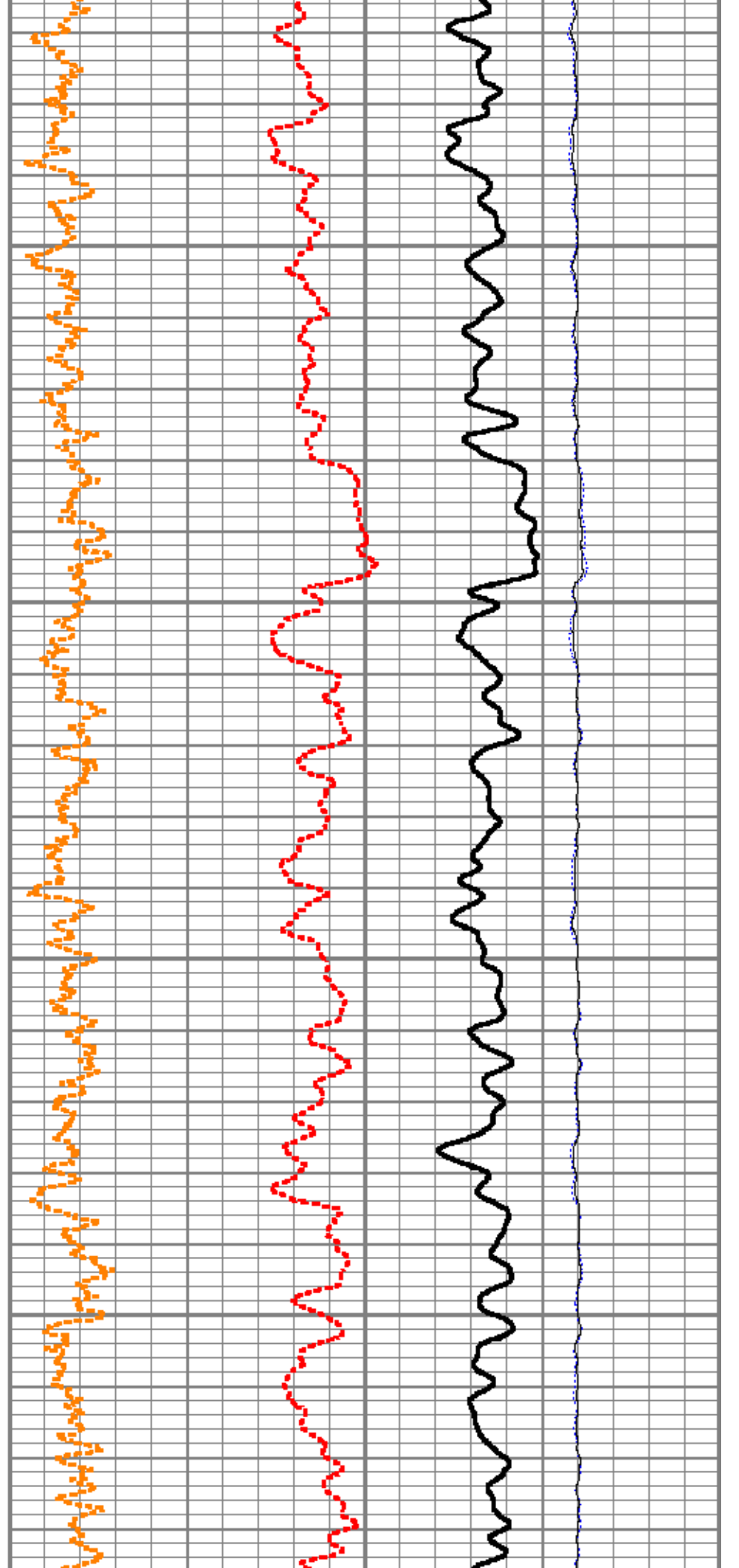
4	RNF2	0
60	SIGMA (cu)	0
4.5	RNFI	0
0	FIS2	45000
0	NIS2	100000

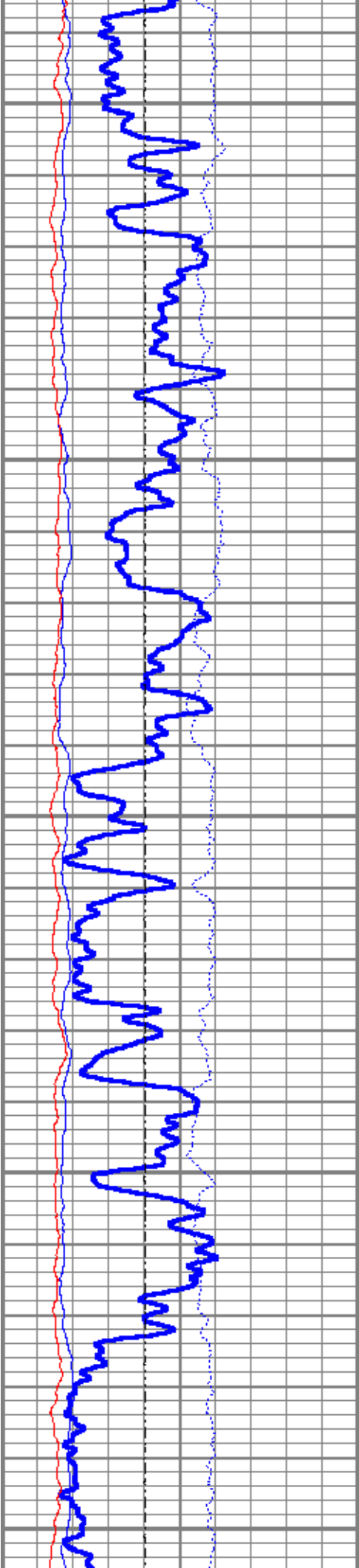




5100

5200

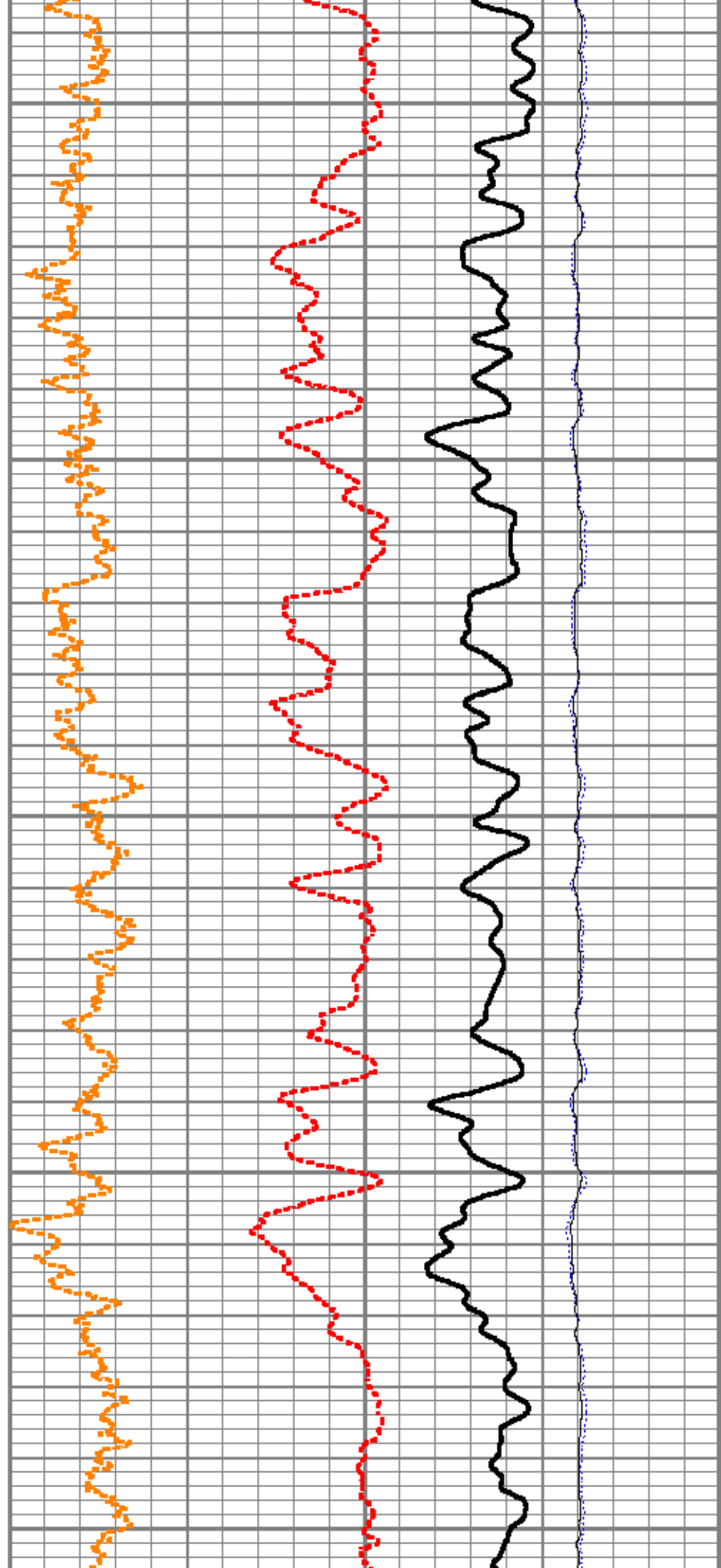


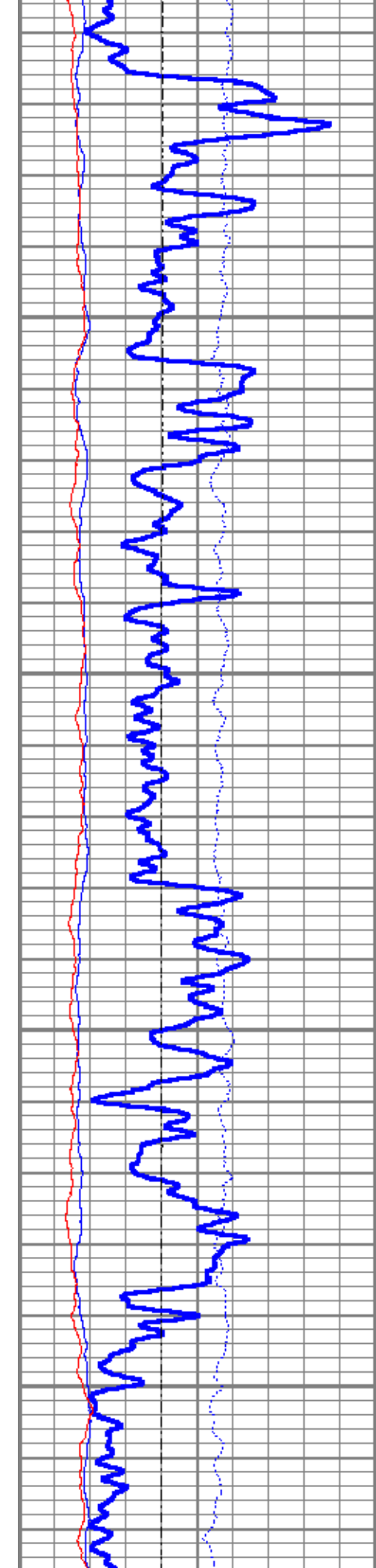


5300

5400

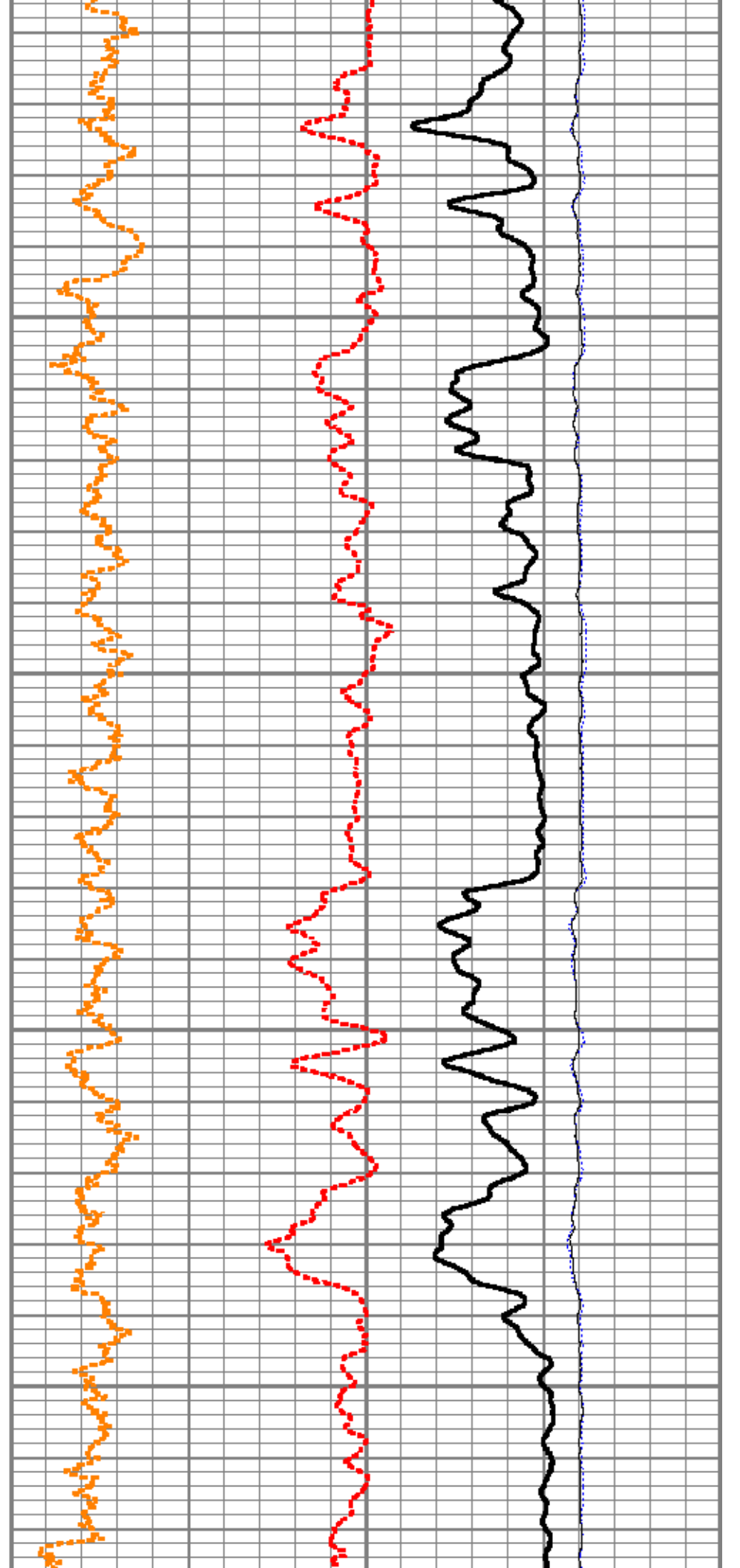
5500

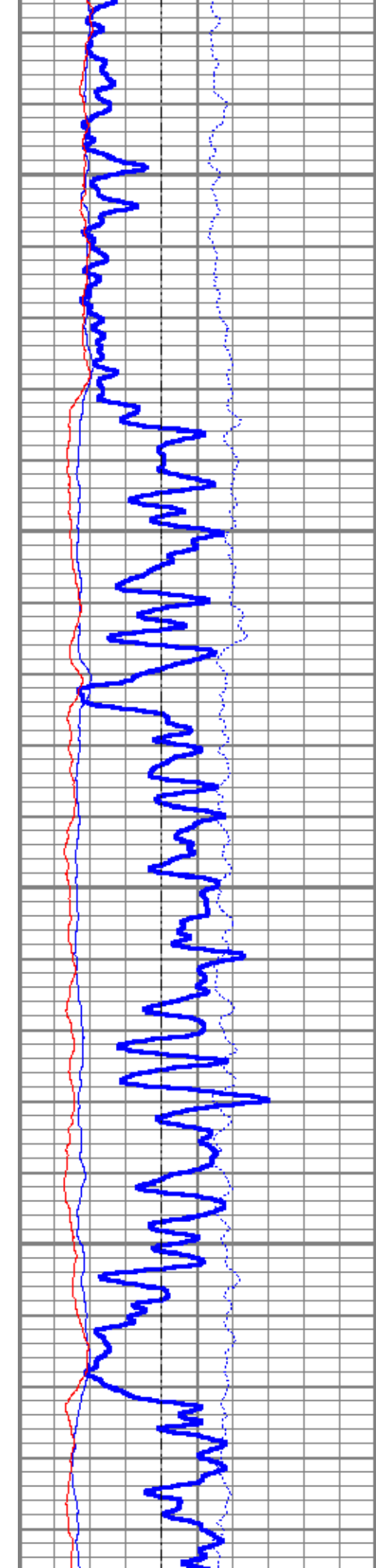




5600

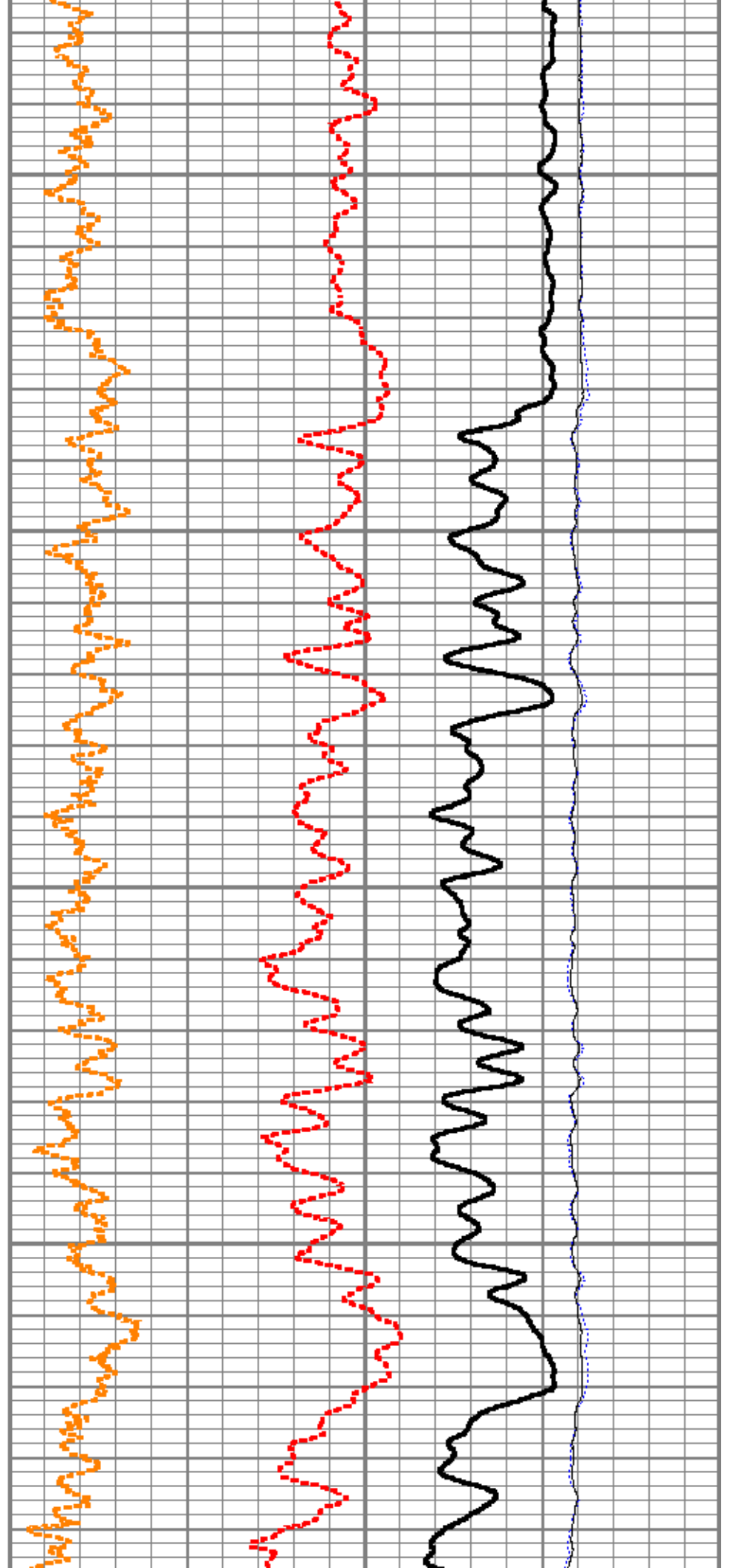
5700

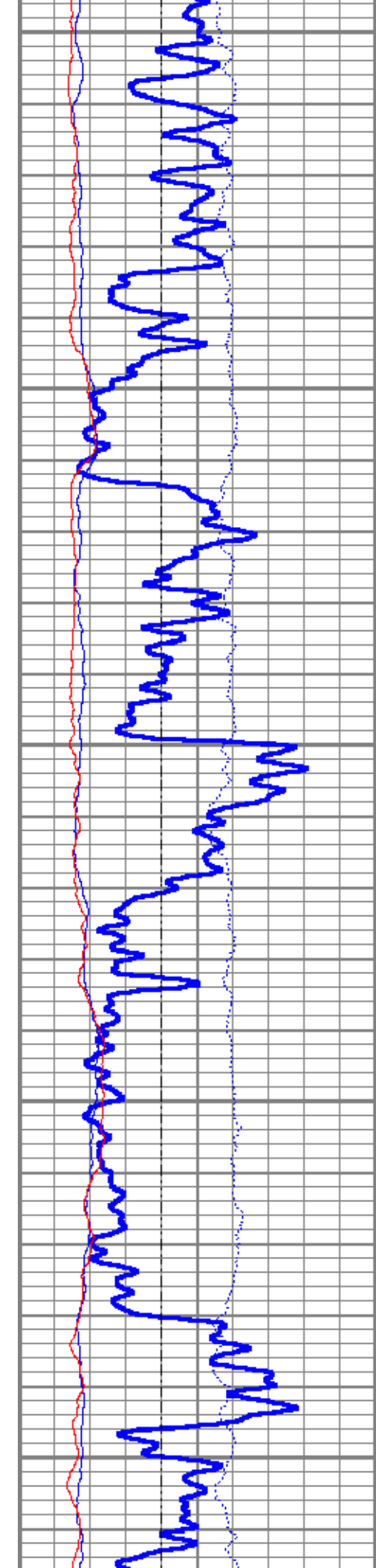




5800

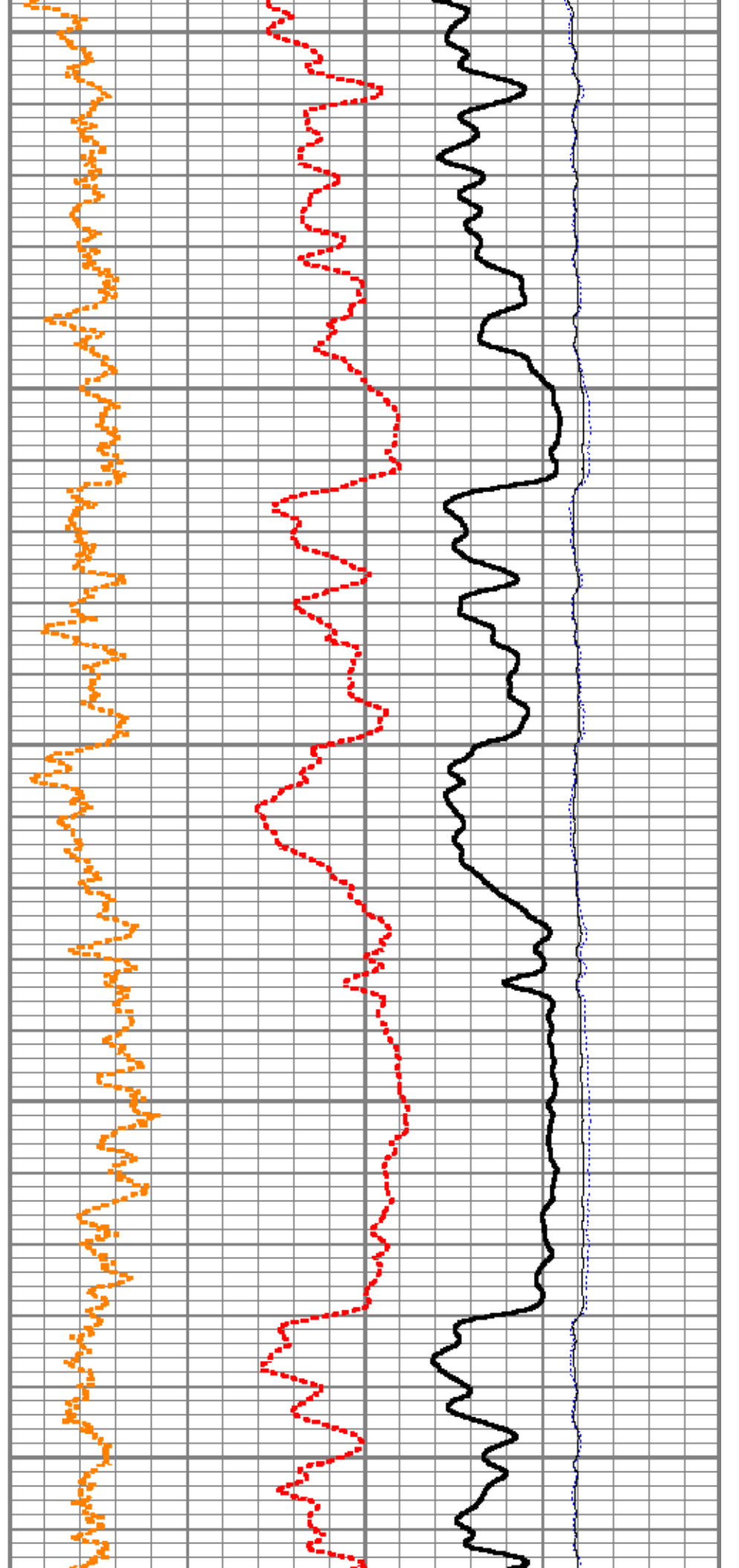
5900

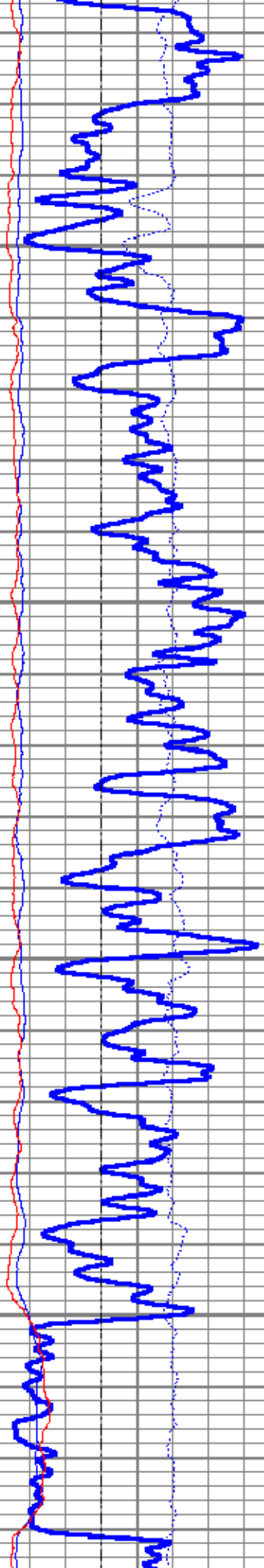




6000

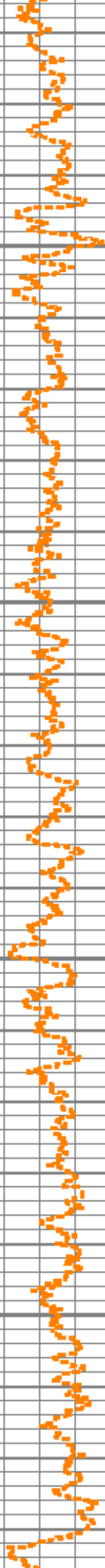
6100

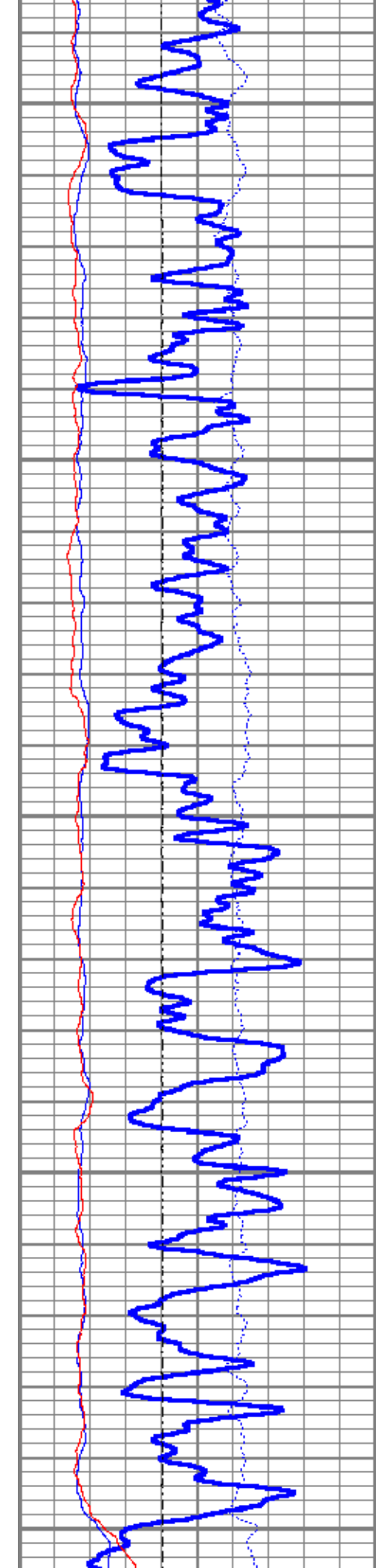




6200

6300

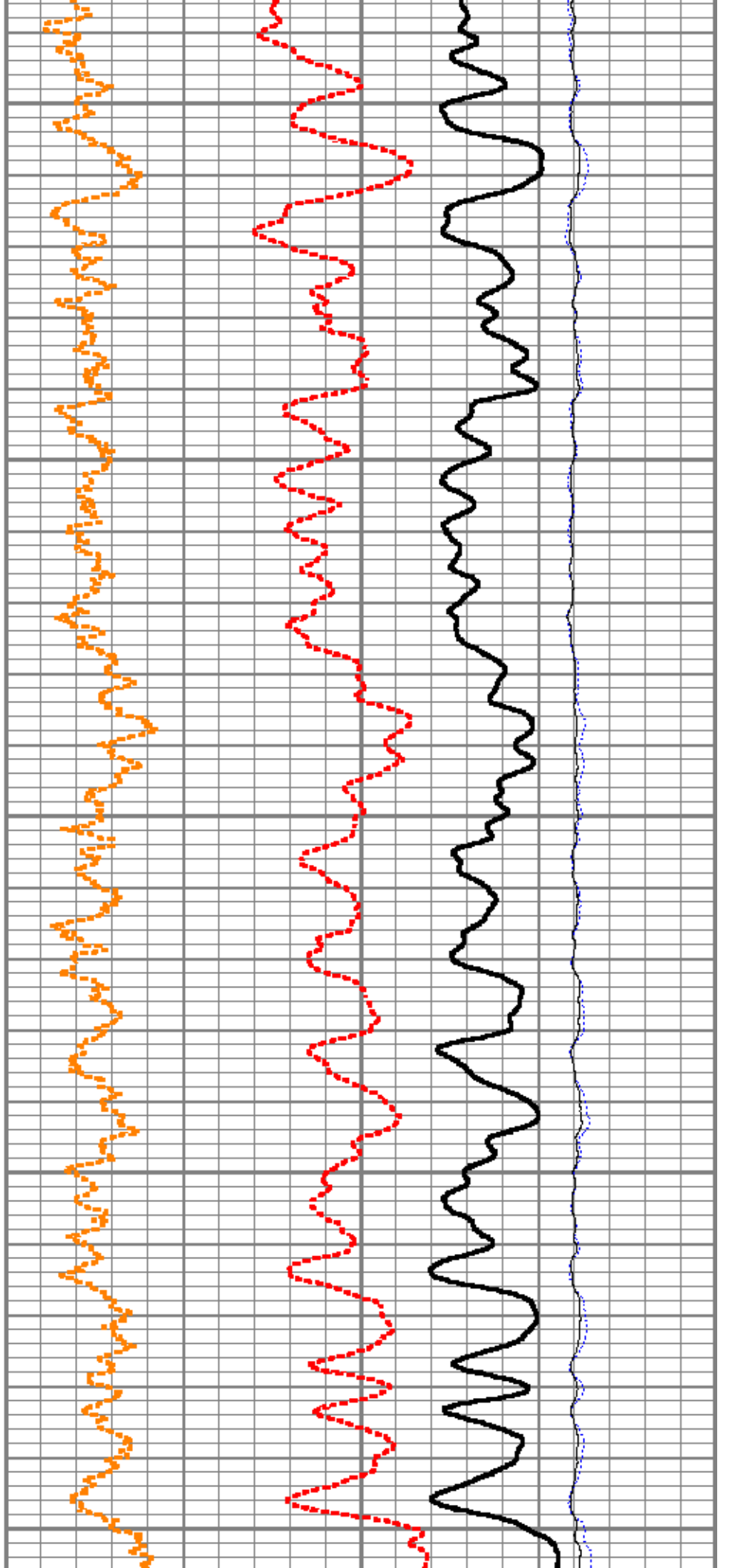


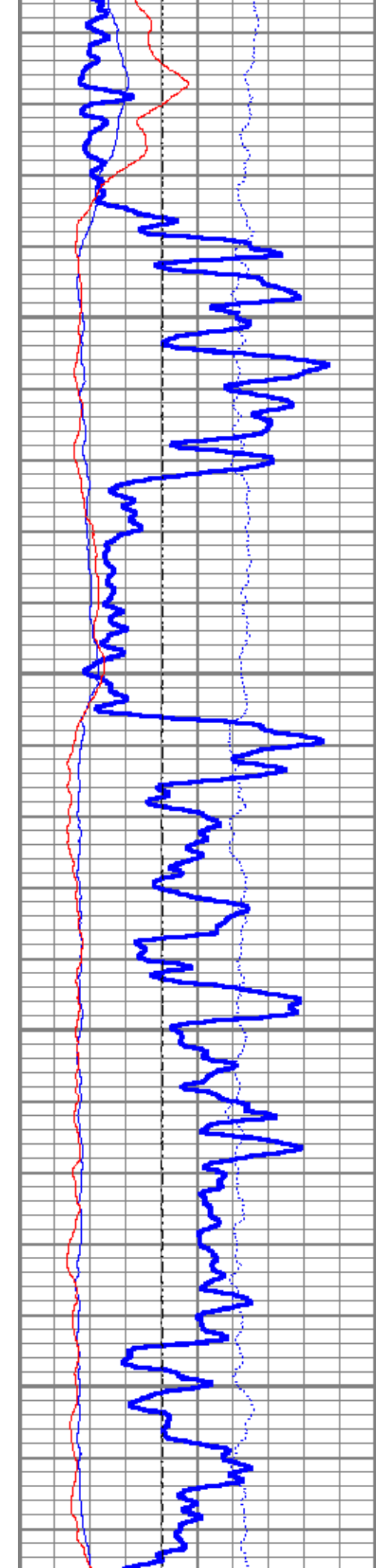


6400

6500

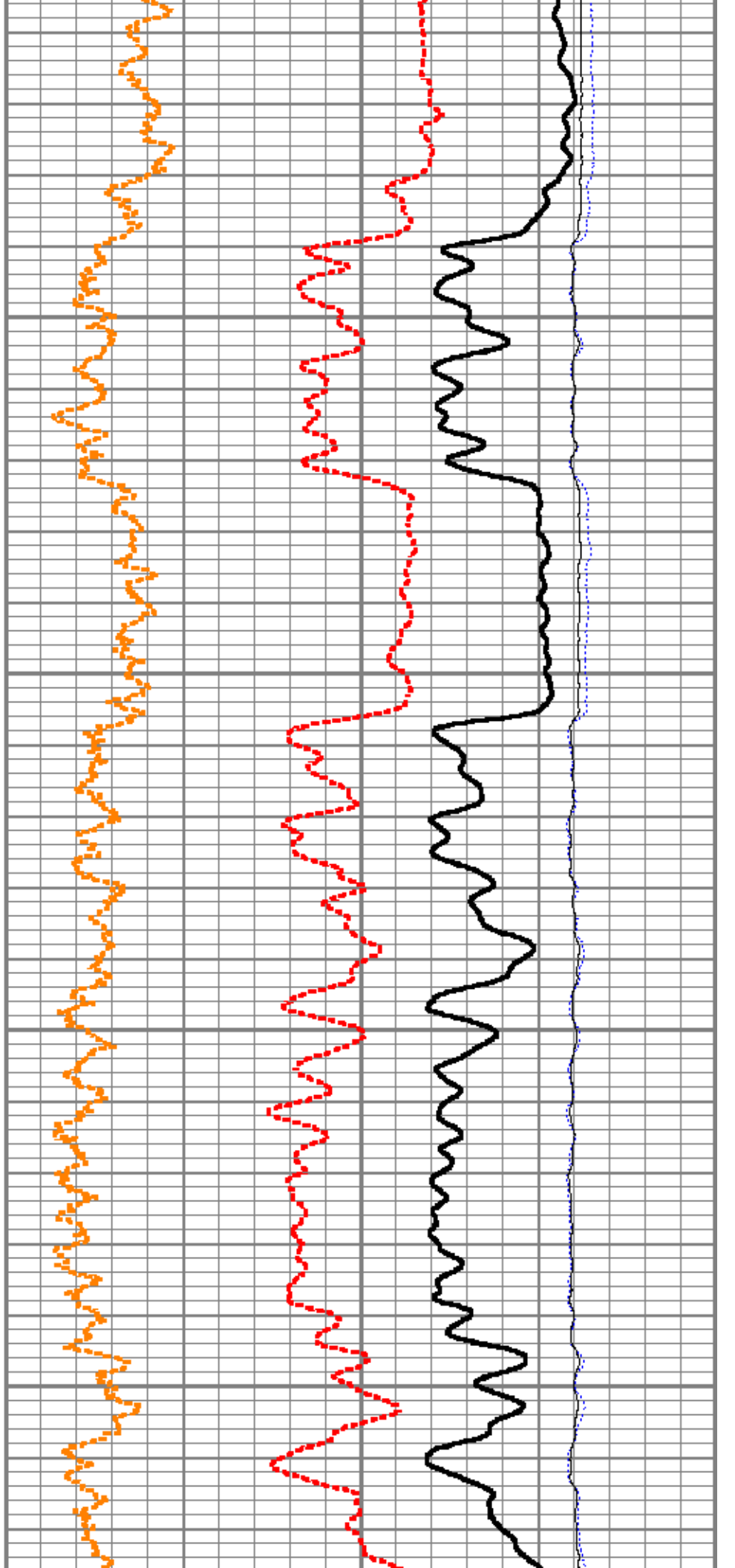
6600

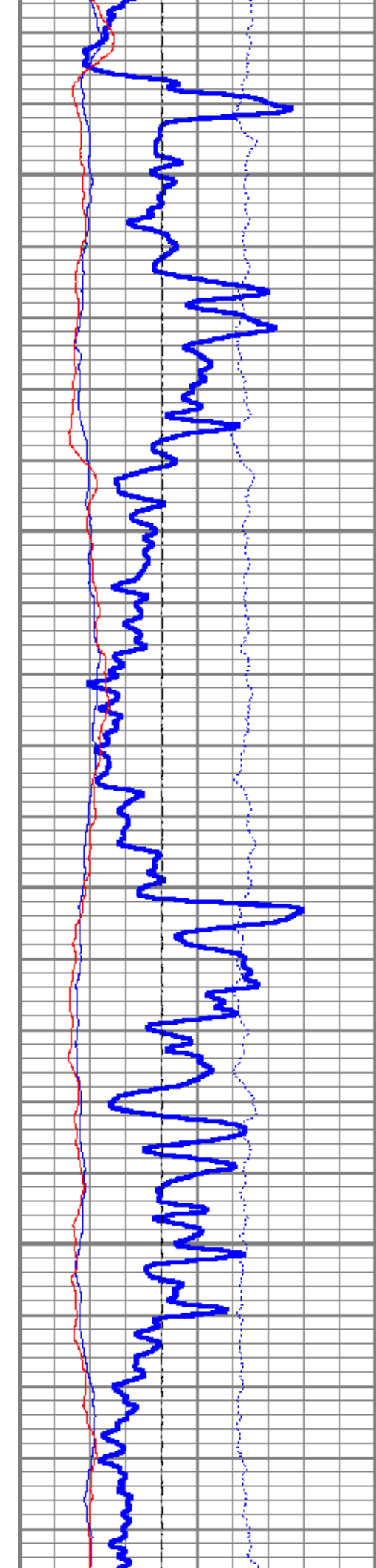




6700

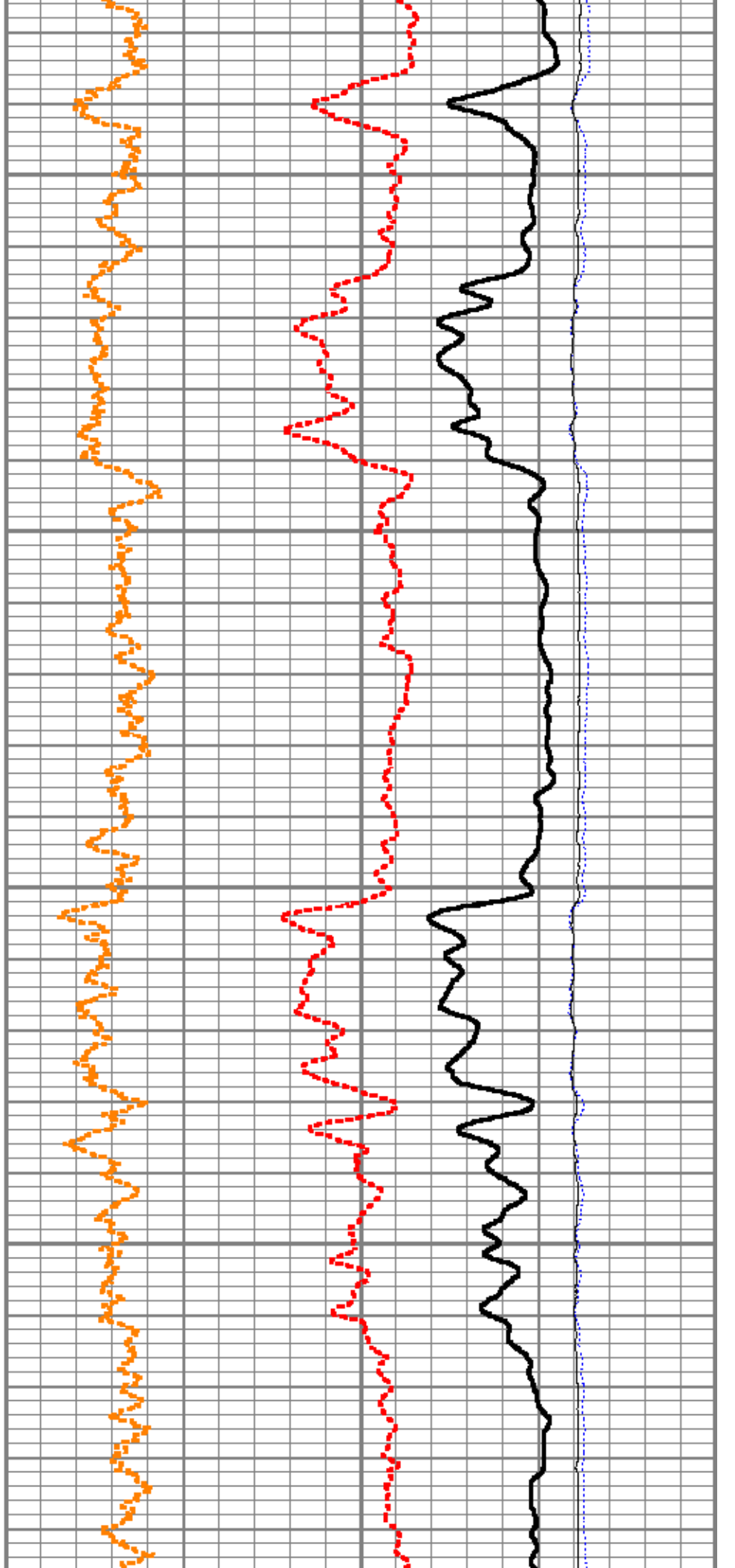
6800

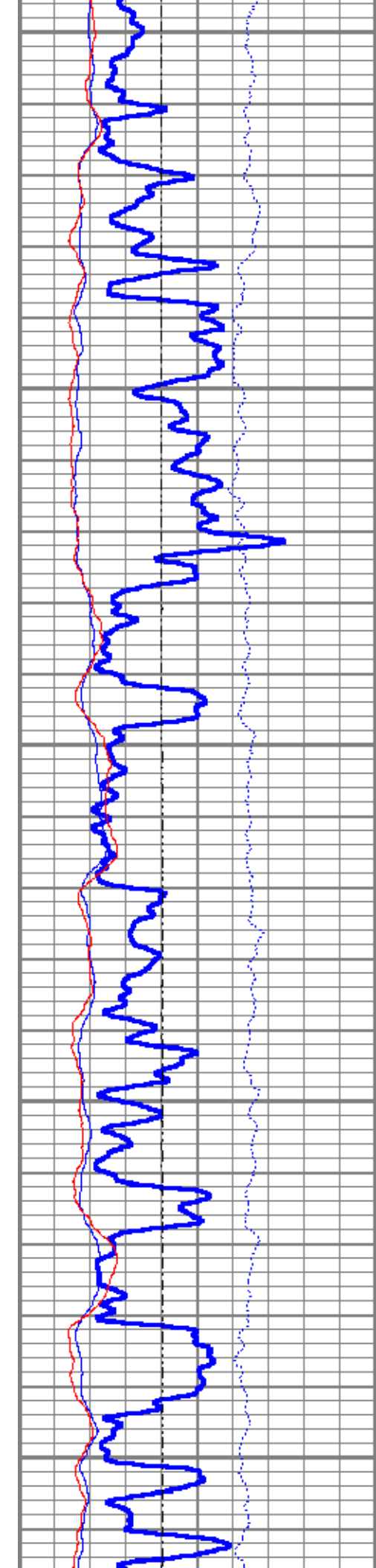




6900

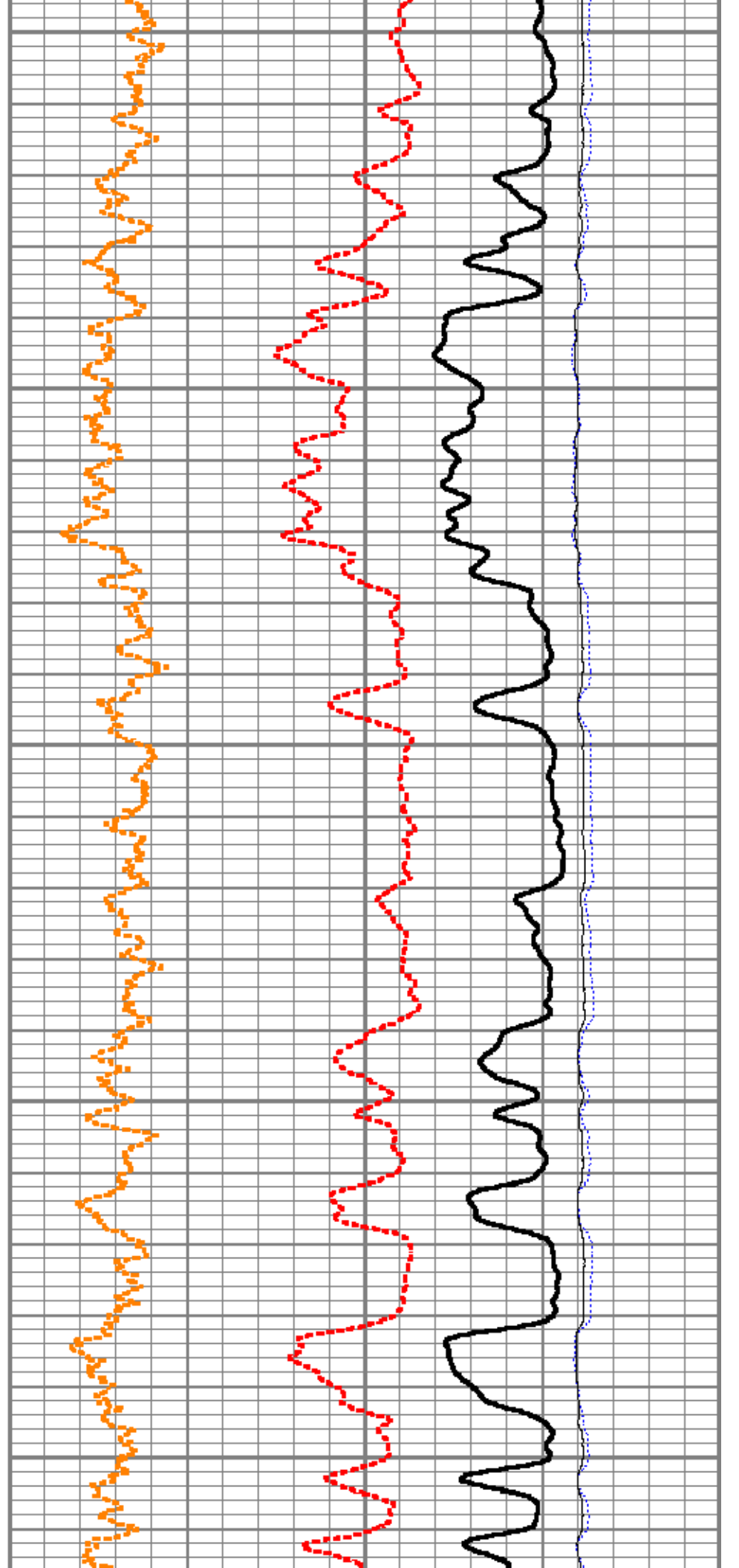
7000

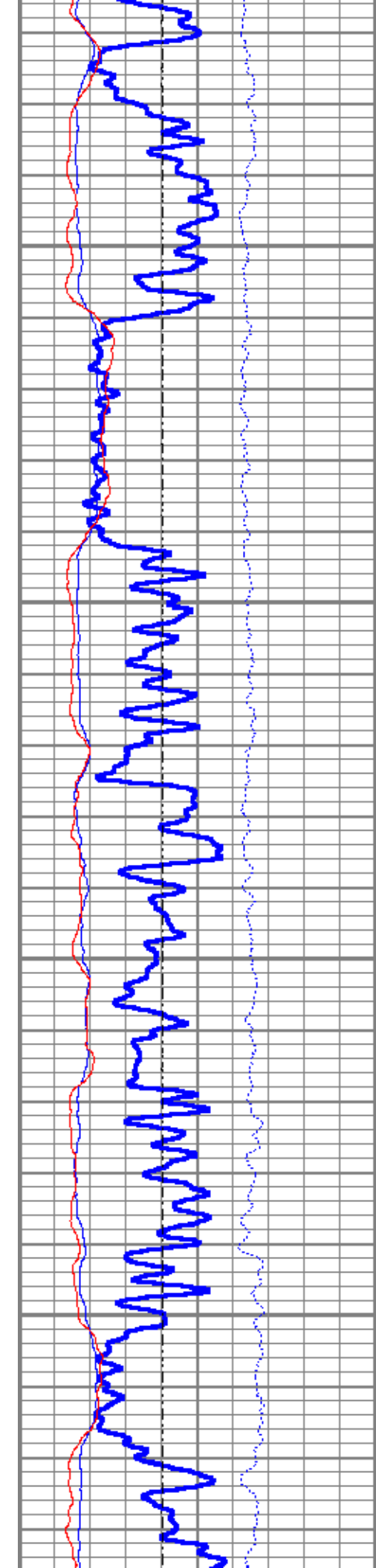




7100

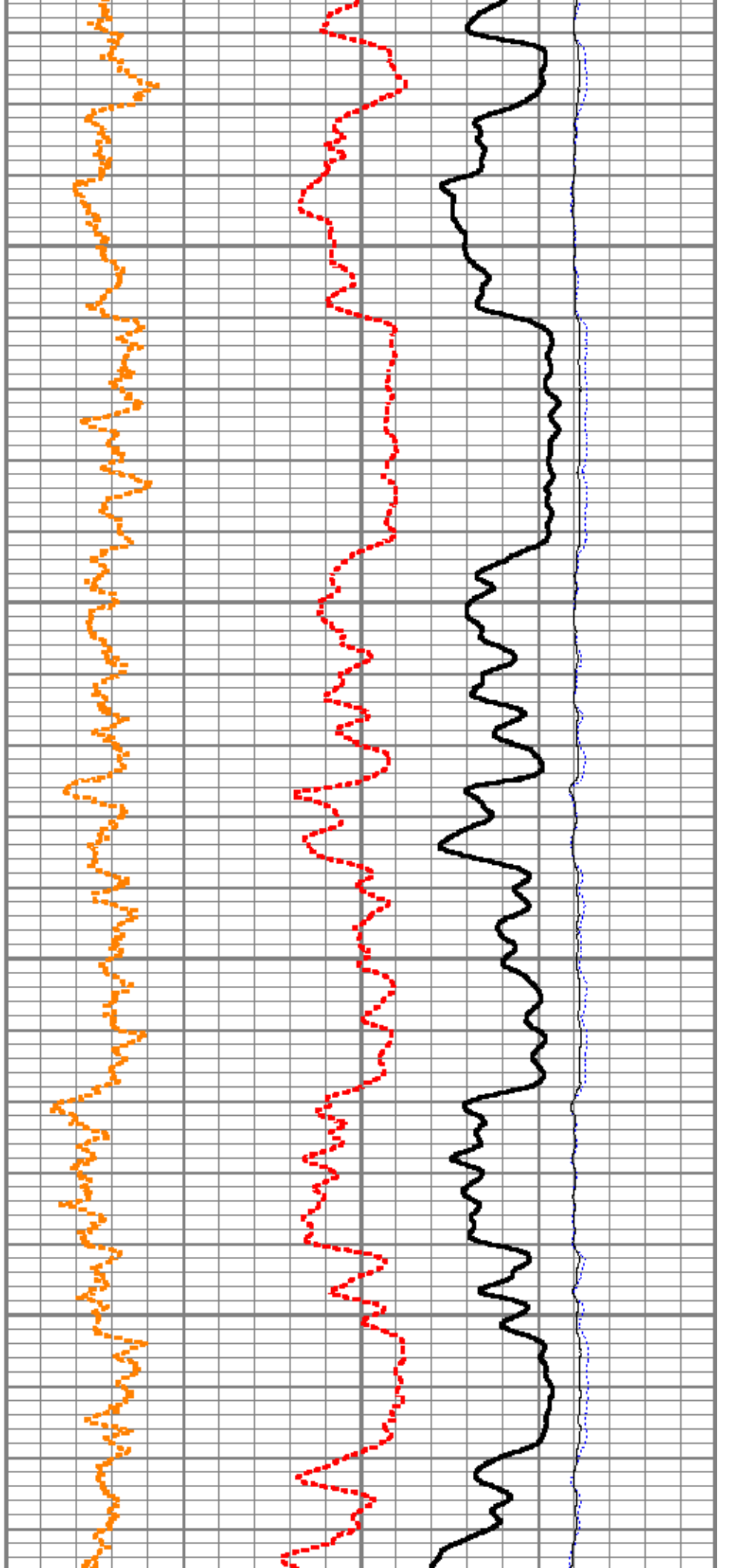
7200

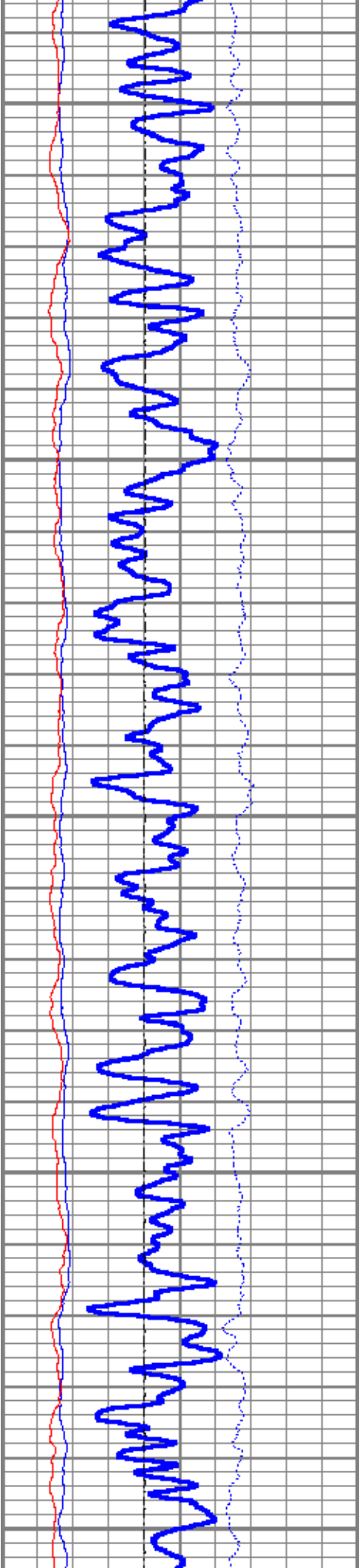




7300

7400

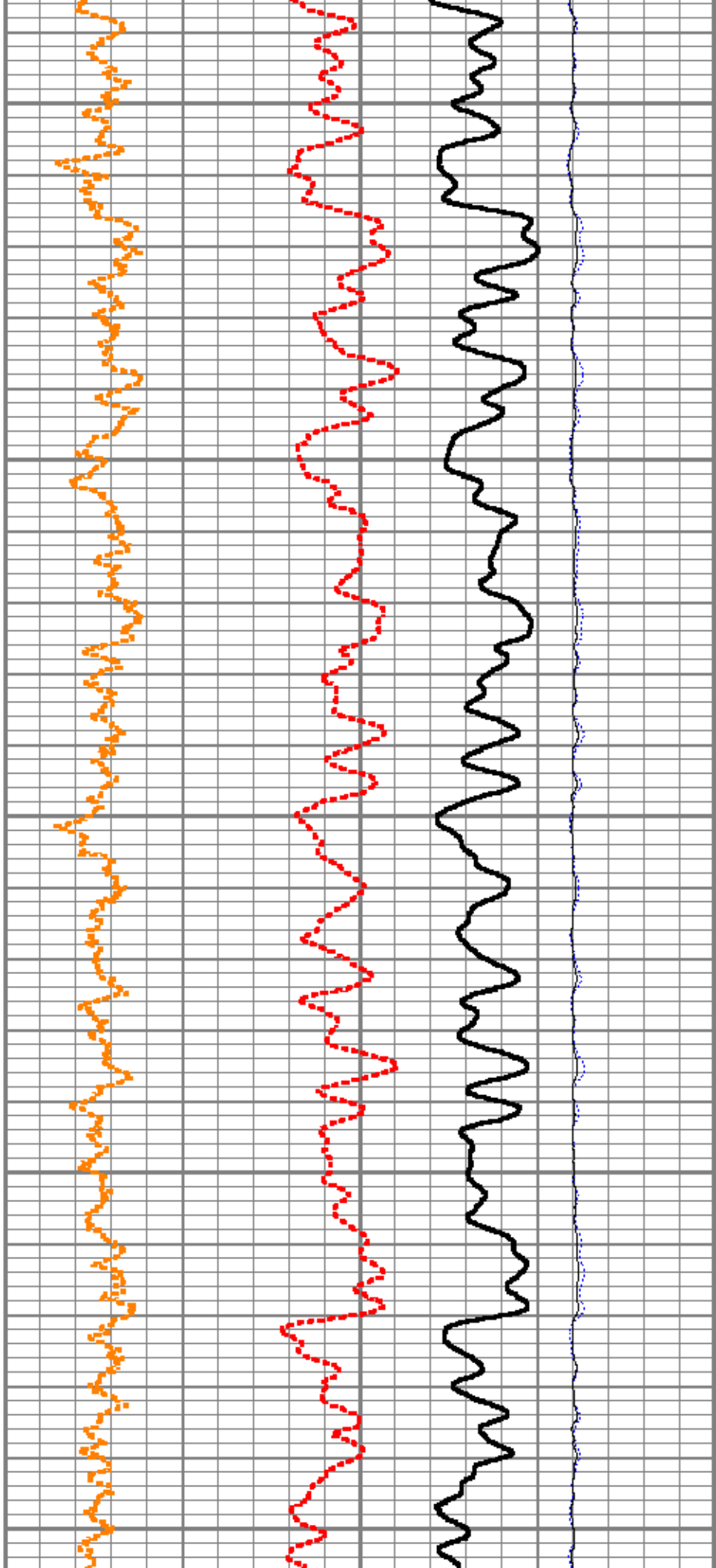


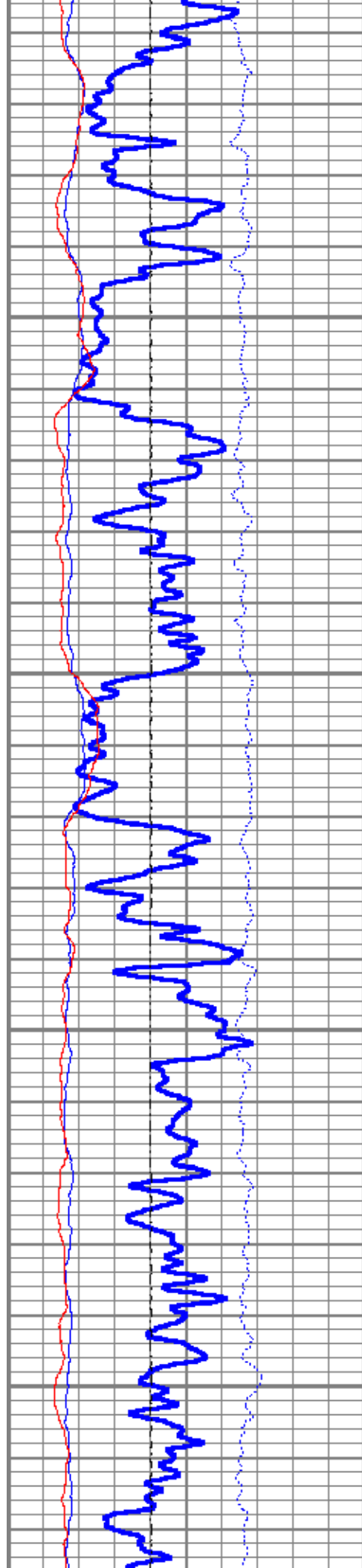


7500

7600

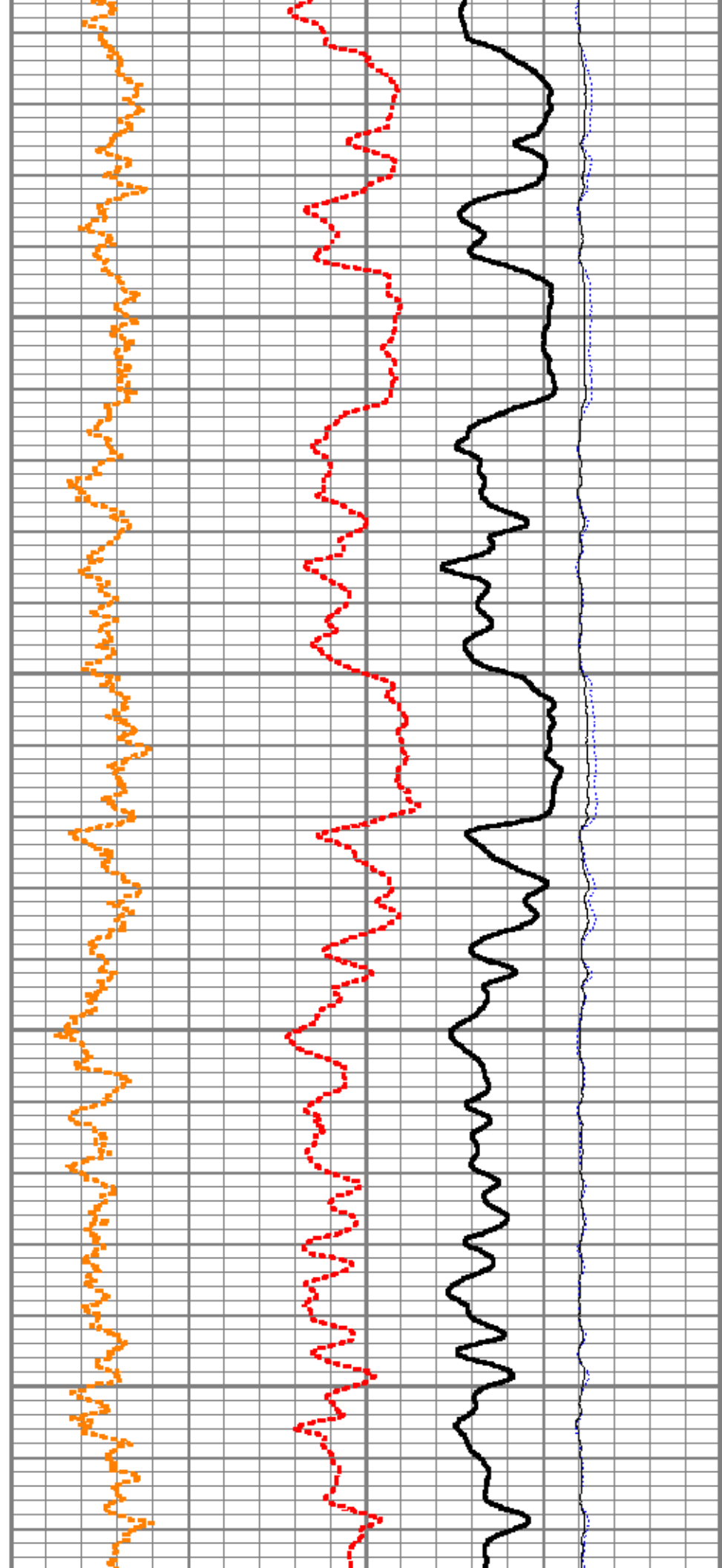
7700

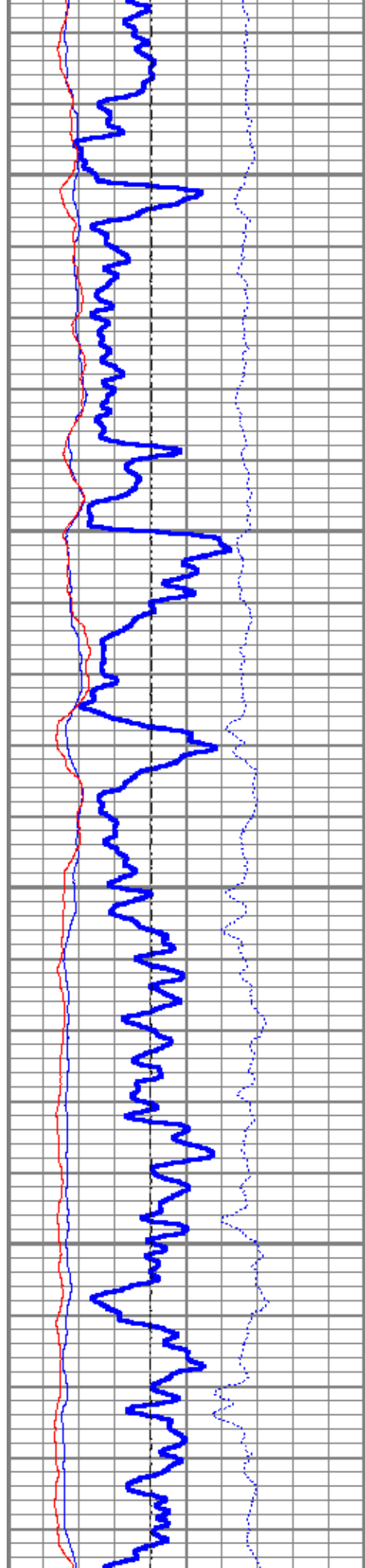




7800

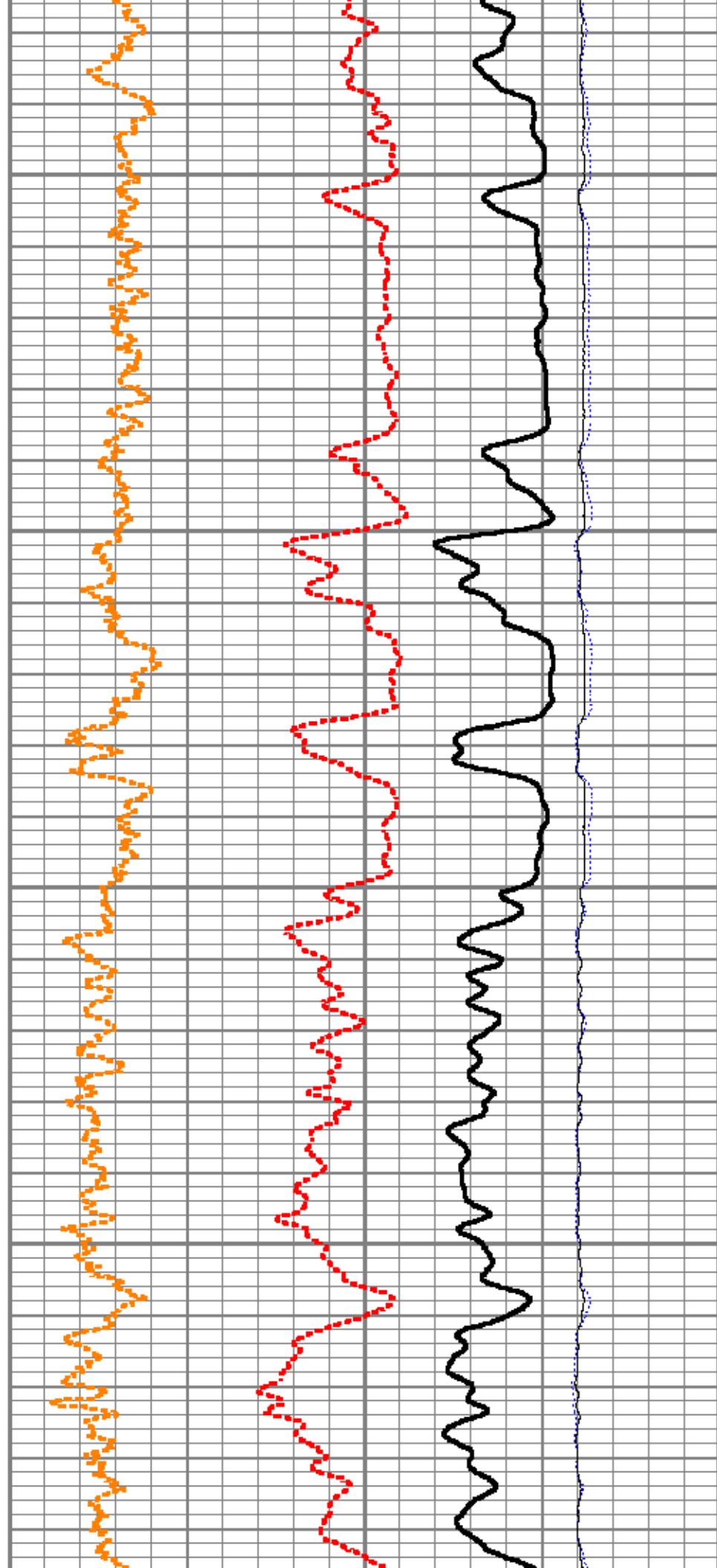
7900

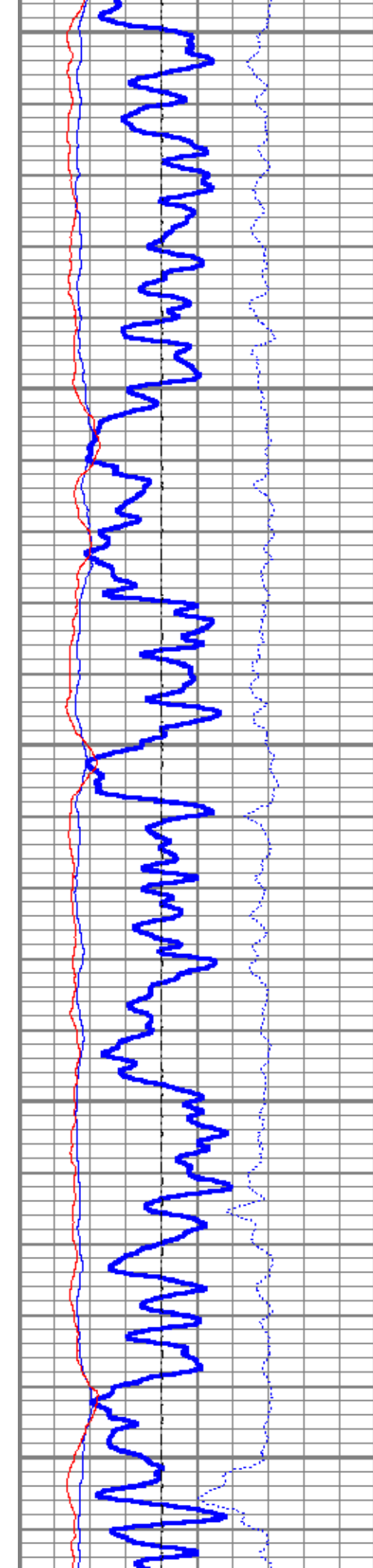




8000

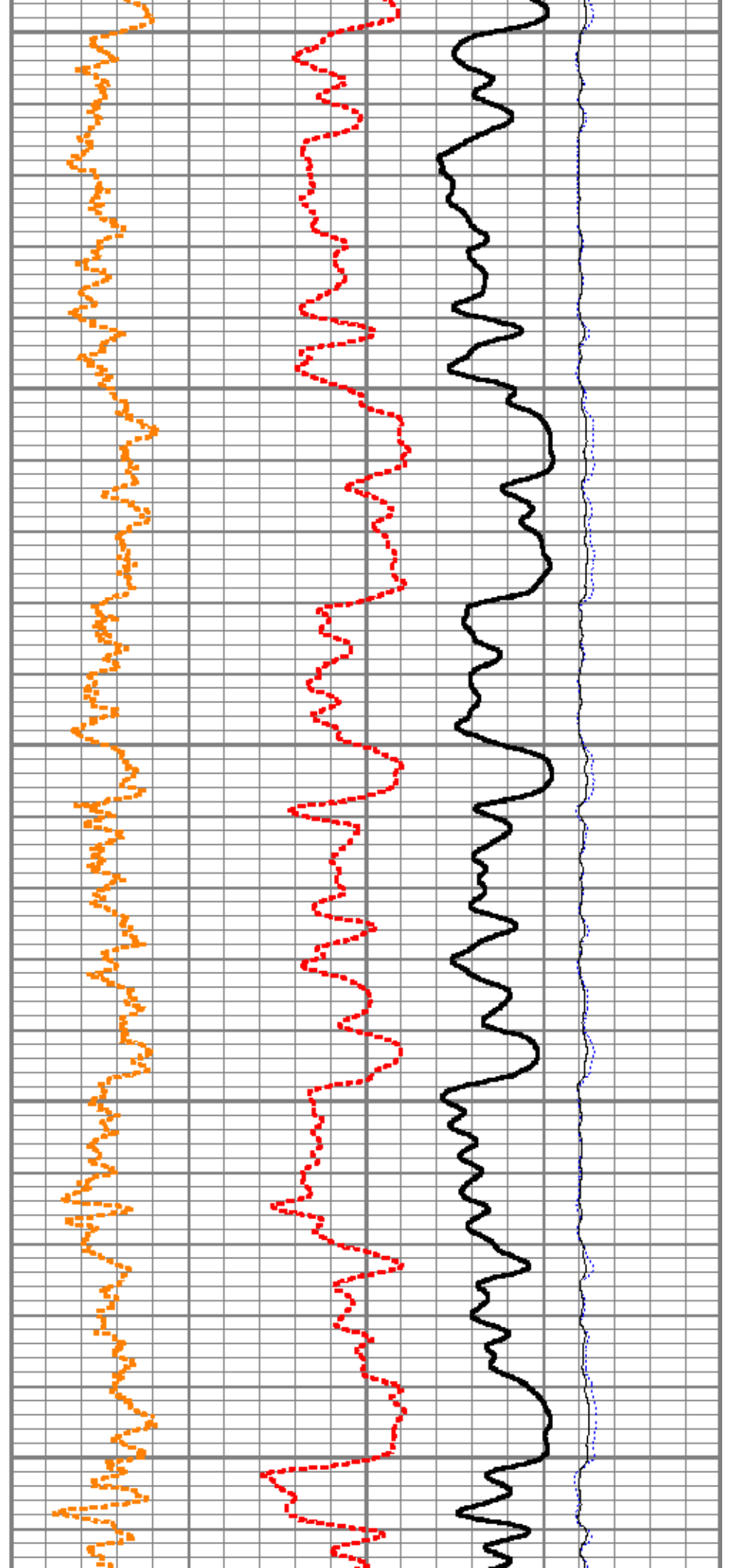
8100

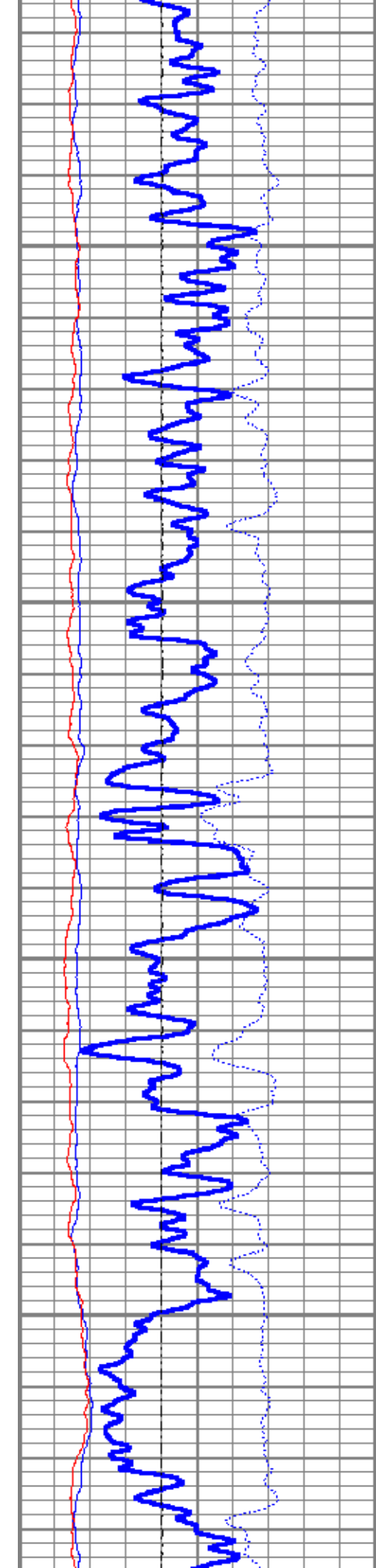




8200

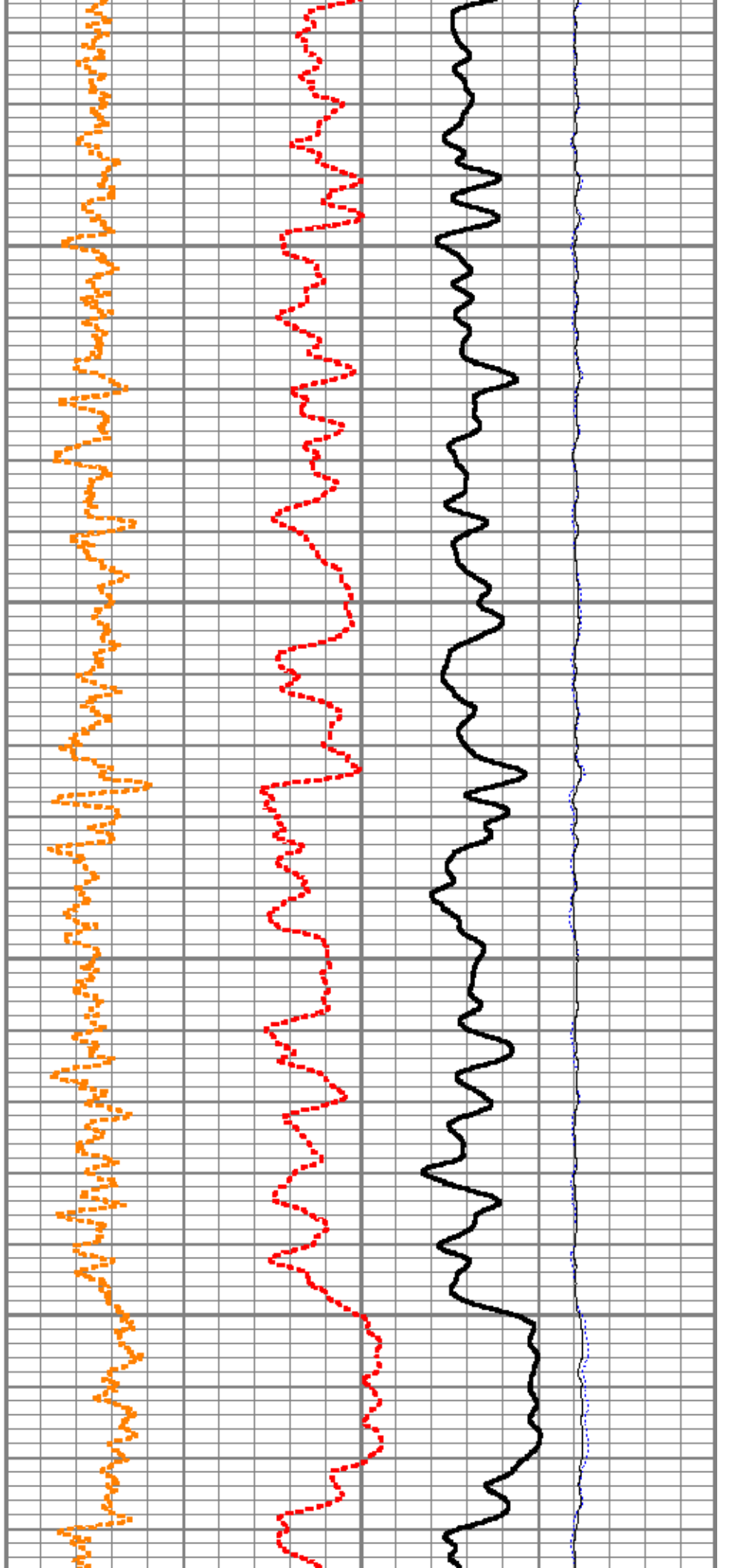
8300

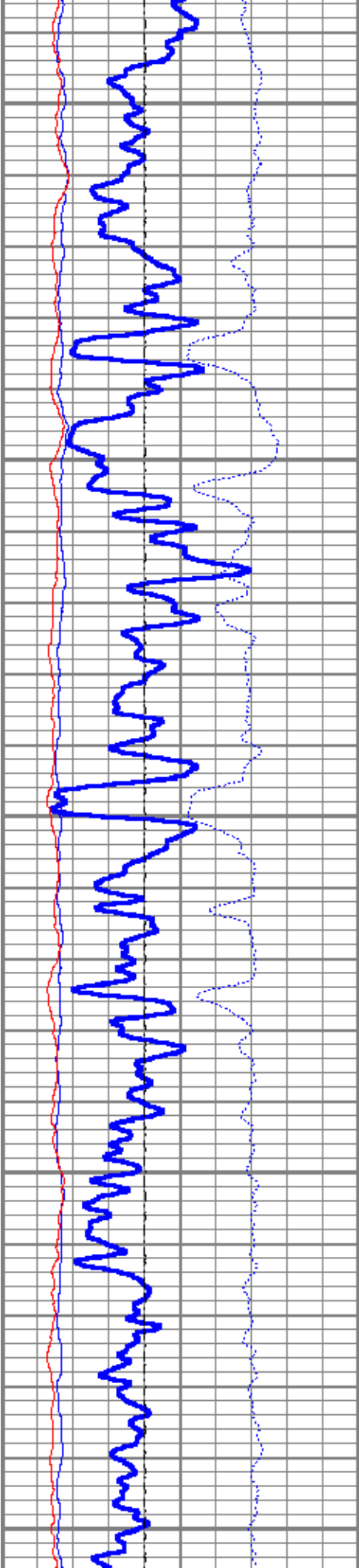




8400

8500

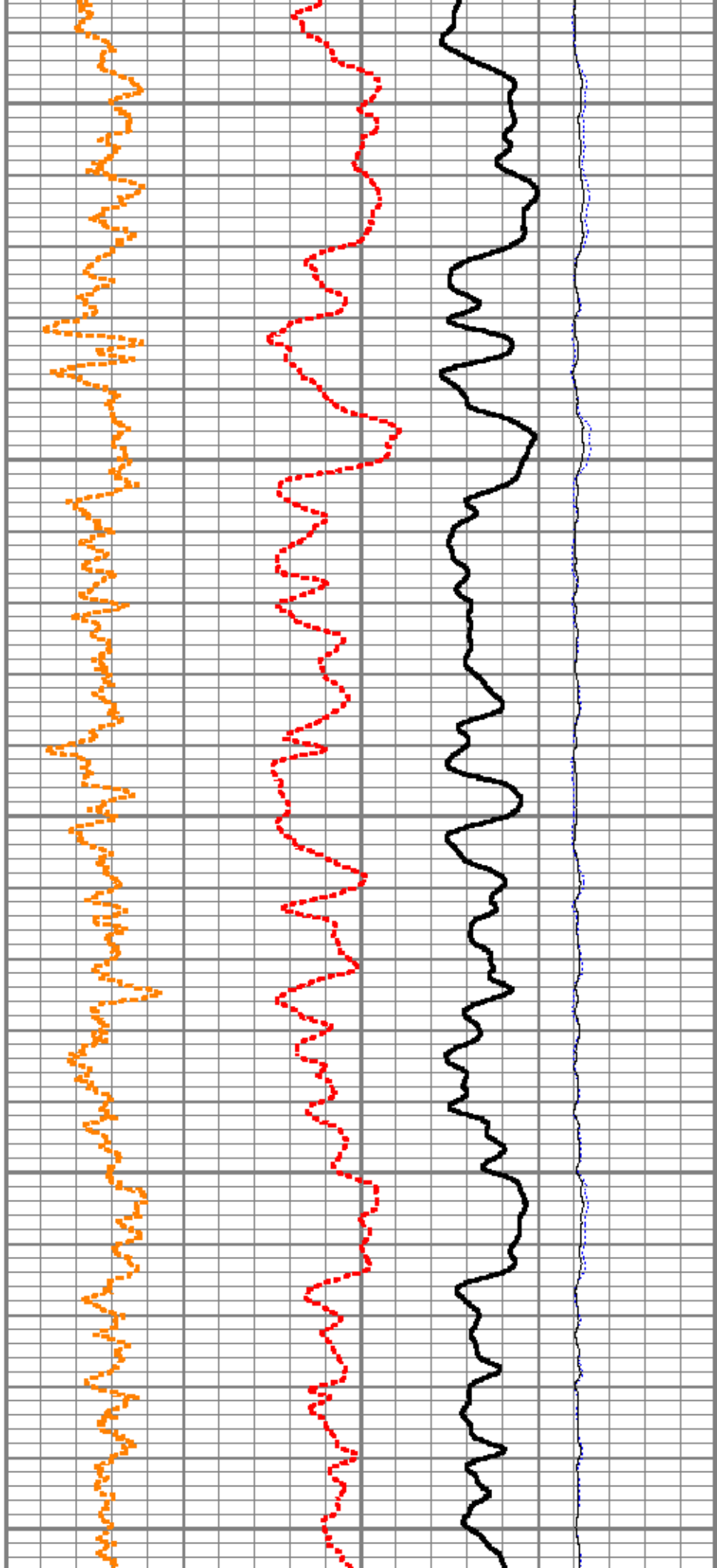


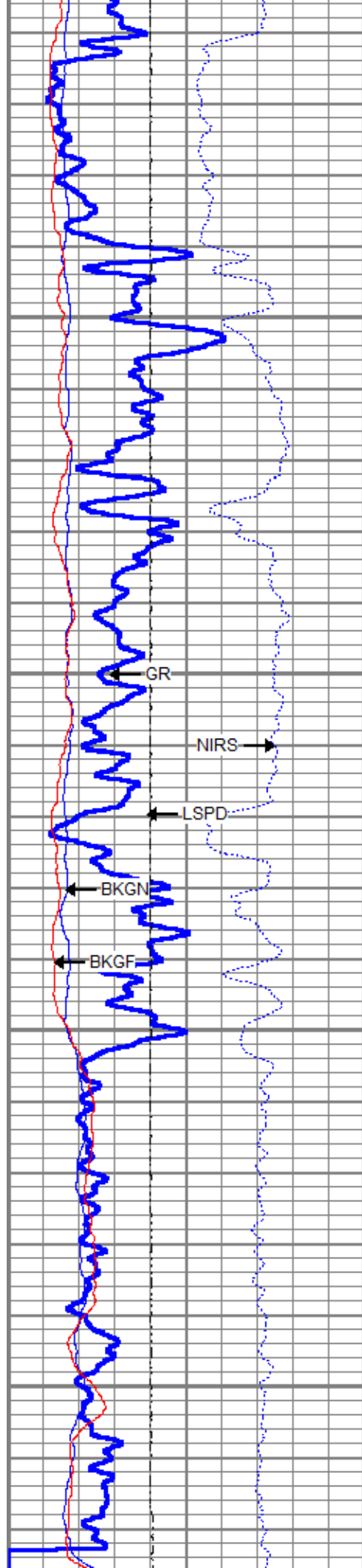


8600

8700

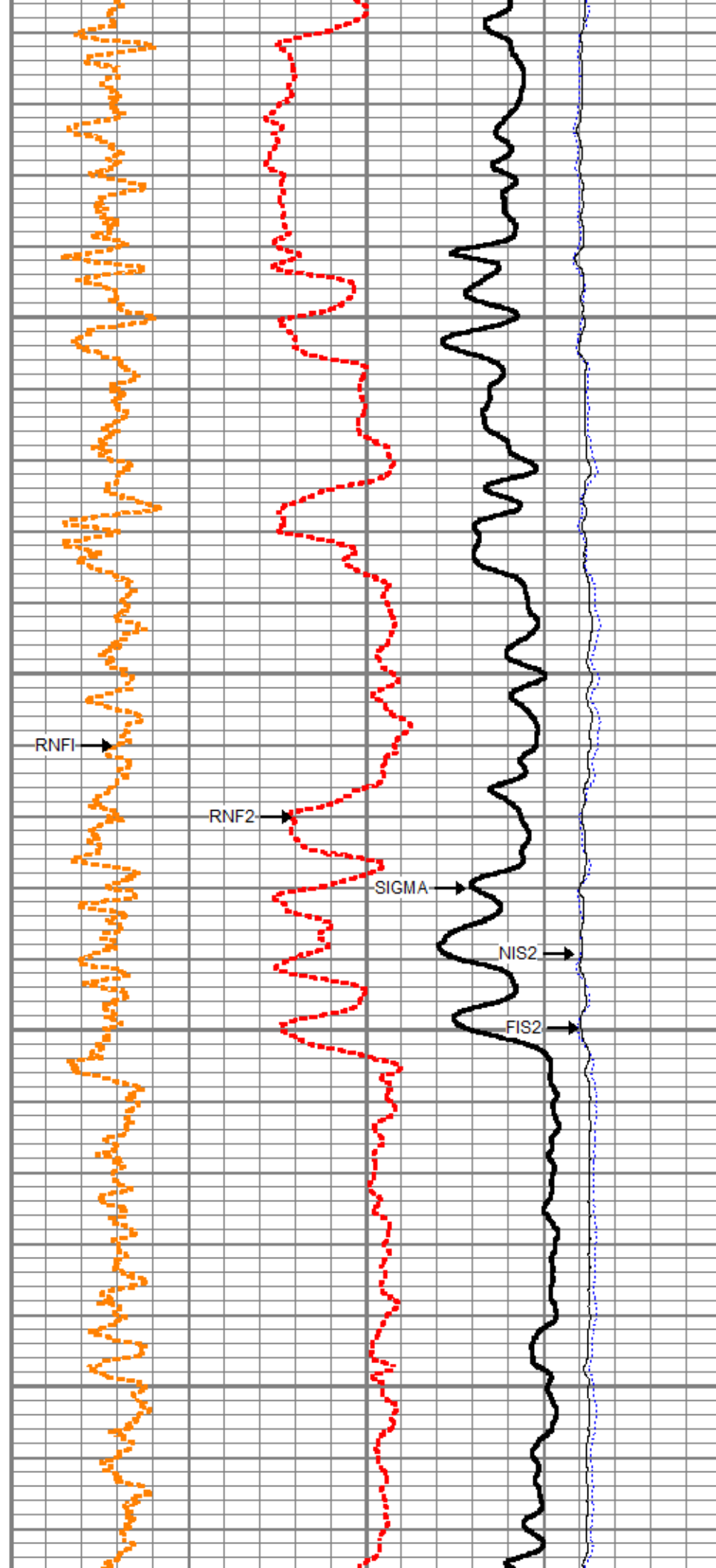
8800

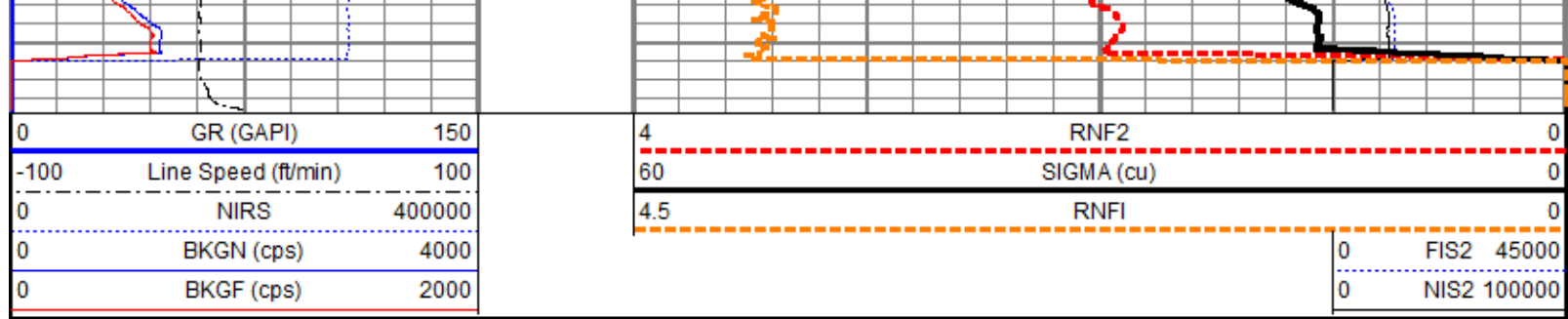




8900

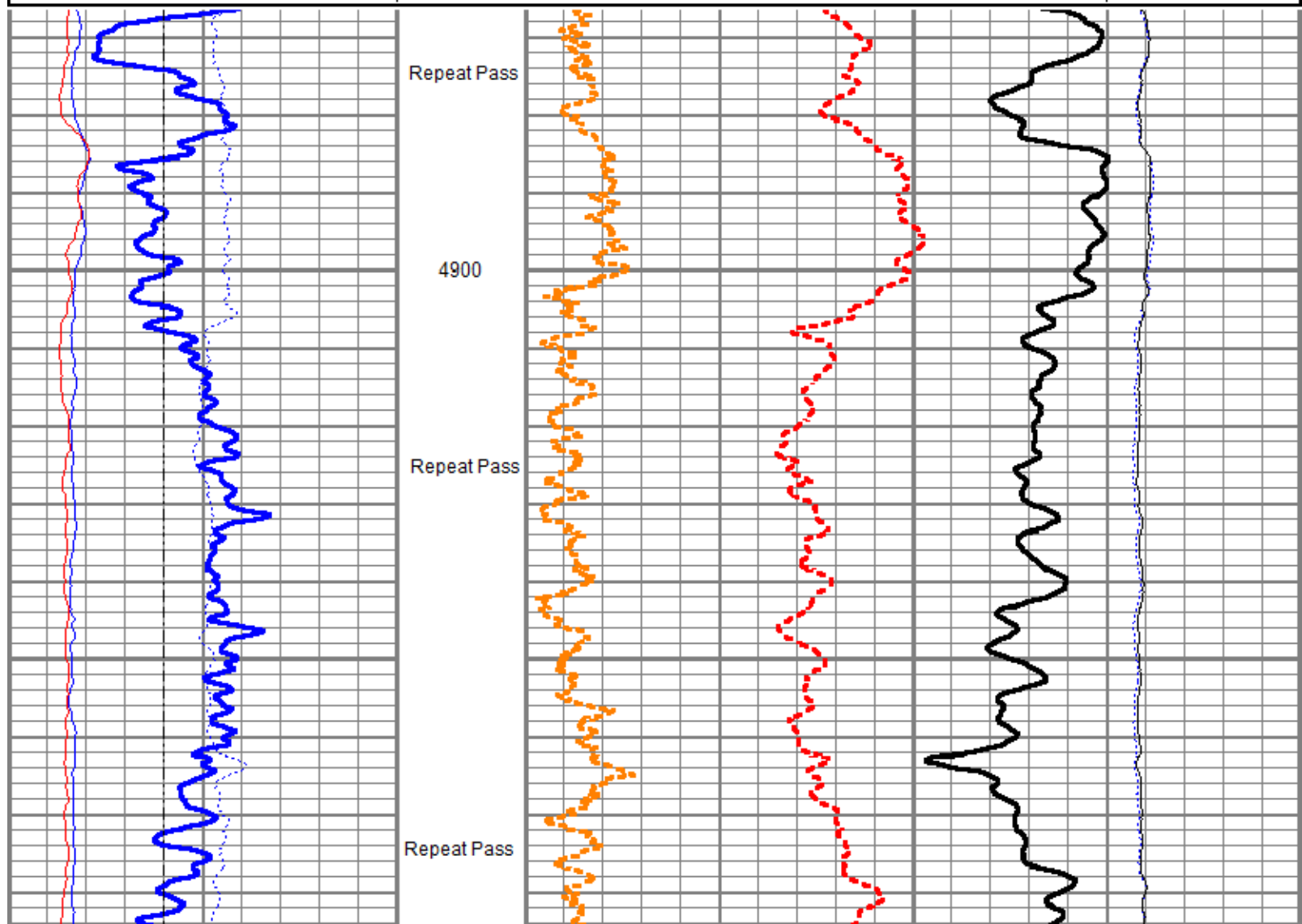
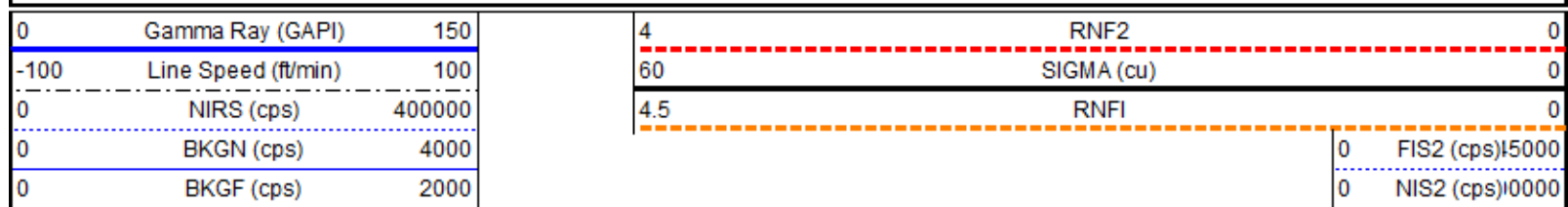
9000

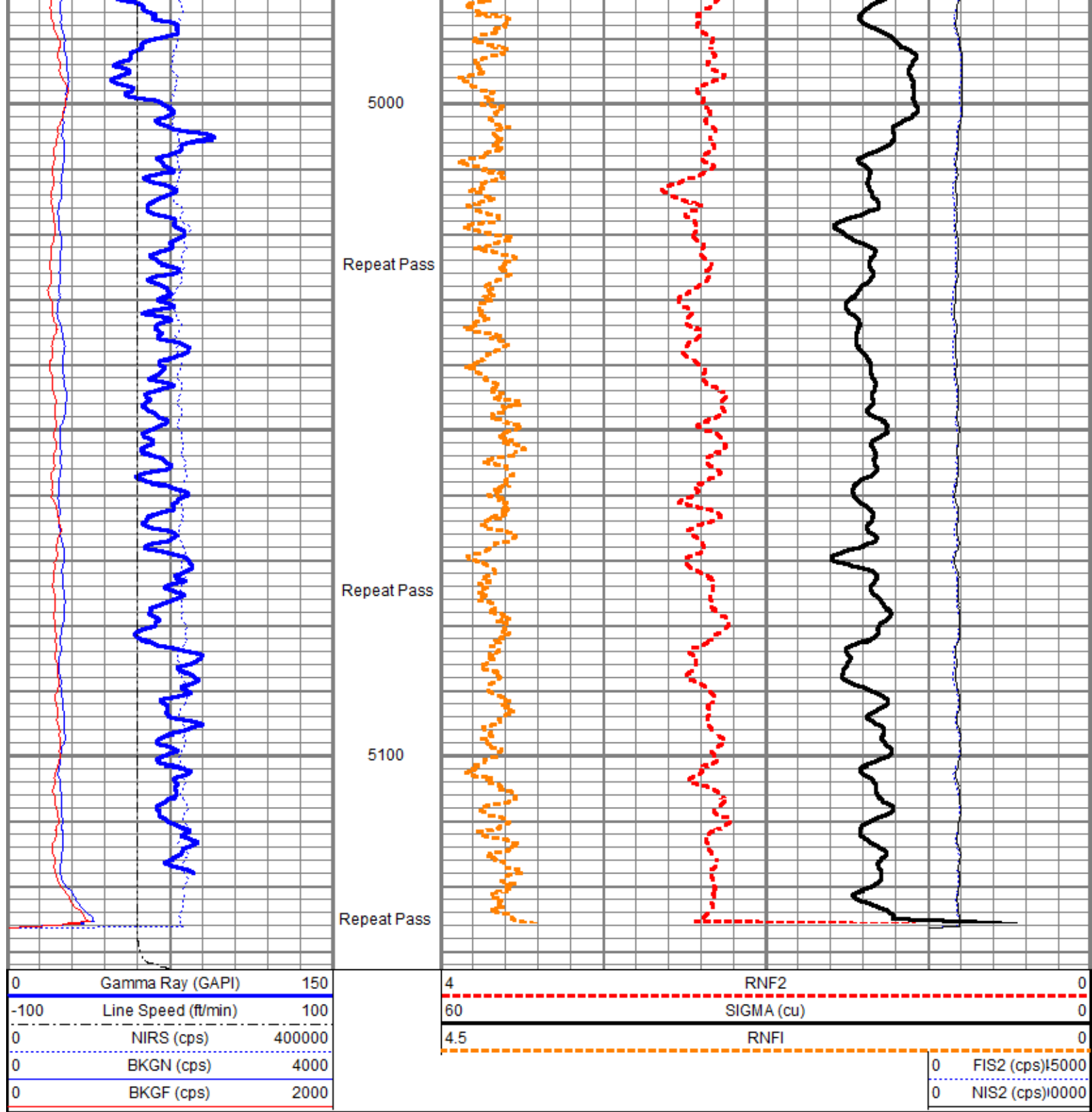





Repeat Pass

Database File: 02_tep\federal pa 333-24\tep_federal pa 333-24_pn_10-2-2018\tep_federal pa 333-24_pn_10-2-2018.db
 Dataset Pathname: repeat.2
 Presentation Format: ros_pdn_hunter
 Dataset Creation: Fri Nov 02 05:35:39 2018
 Charted by: Depth in Feet scaled 1:240





Sensor	Offset (ft)	Schematic	Description	Length (ft)	O.D. (in)	Weight (lb)
TCUTEMP	14.69		Titan CHD-16875 GO Titan 1-11/16" Assembled Electric Cable Head w/ 1" Fishing Neck	1.03	1.69	5.40
			HWS_TCU-002 (001705) HWS Telemetry Control Unit (TCU002)	2.30	1.69	10.87

Serial Number:	001475
Tool Model:	001
Performed:	Fri Oct 19 14:55:00 2018

Calibrator Value:	1.0	GAPI
Background Reading:	0.0	
Calibrator Reading:	1.0	
Sensitivity:	1.0000	GAPI/



Company	TEP Rocky Mountain LLC
Well	Federal PA 333-24
Field	Parachute
County	Garfield
State	Colorado