

LWD MEMORY LOG



Azmuthal Gamma Ray, Multiple  
Propagation Resistivity

Scale:

1:240 MD

Company: Anadarko

Well: COWBOY 21-1HZ

Field: Weld County

Driller's Depth

County: Weld State: United States

Status:

Final Print

Surface Location:

Latitude: 040° 07' 28.834" N

Longitude: 104° 53' 22.276" W

UTM: N/A

SEC: 21

TWN: 2N

RGE: 67W

Other Services:

API No: 05123471060000

Job ID: 109372441

Permanent Datum (P.D.): Mean Sea Level

Elevation:

0.00 ft

Log Measured From: Rig Floor

Above P.D.

5067.00 ft

KB:

DF:

GL:

N/A

5067.00 ft

5041.00 ft

Dates

Interval Logged

Magnetic Field Reference

Date From: 2018-09-15

Top: (ft)

1892.00

Azi Reference North:

True

Dip Angle: (deg)

66.64

Date To: 2018-09-18

Bottom: (ft)

15706.27

Total Magnetic Field Strength: (nT)

52265

Spud Date: 2018-09-15

Mag to Reference North Correction: (deg)

8.29 E

Borehole Record

Casing Record

Hole Size (in)

From (ft)

To (ft)

Size (in)

Weight (lb/ft)

From (ft)

To (ft)

8.500

1892.00

15706.00

9.625

32.00

26.00

1882.00

Mud Record

Deviation Record

Type

From (ft)

To (ft)

Hole Size (in)

Interval (ft)

Inc | Az (Start)

Inc | Az (End)

Oil Based Mud

1892.00

15706.00

8.500

13814.00

17.97 | 242.90

90.12 | 3.45

Acquisition System

Software Version

Other

Baker Hughes Cadence

RT 4.2

Rig:

Precision 564

Contractor:

Precision Drilling

District:

RMD

Unit:

D&E

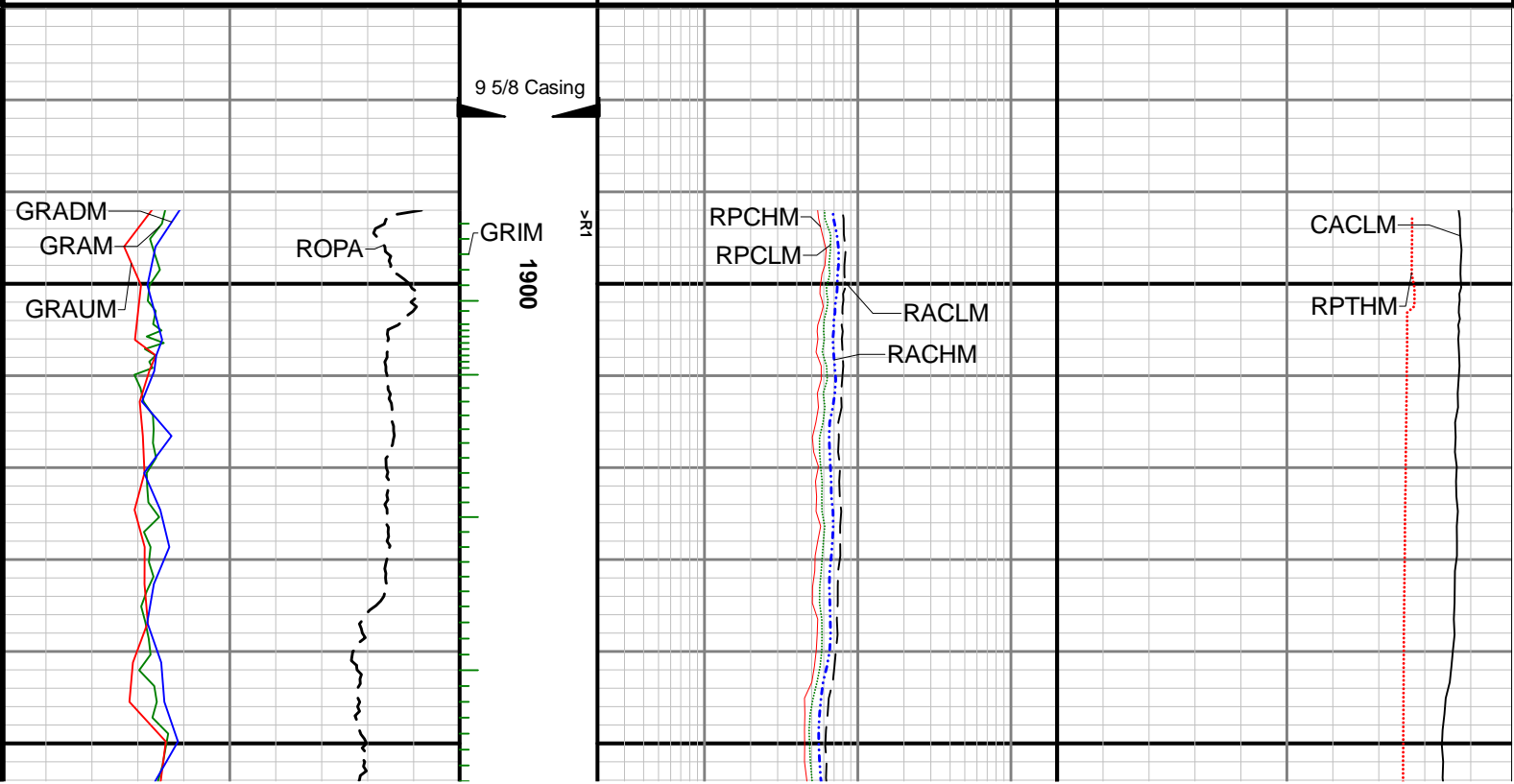
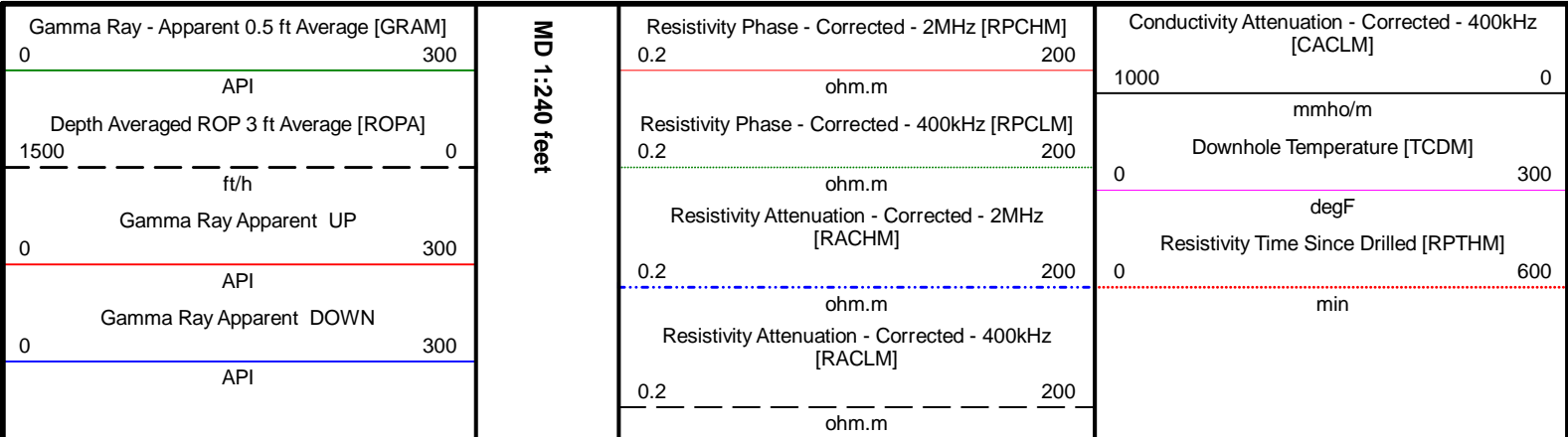
Plot Studio

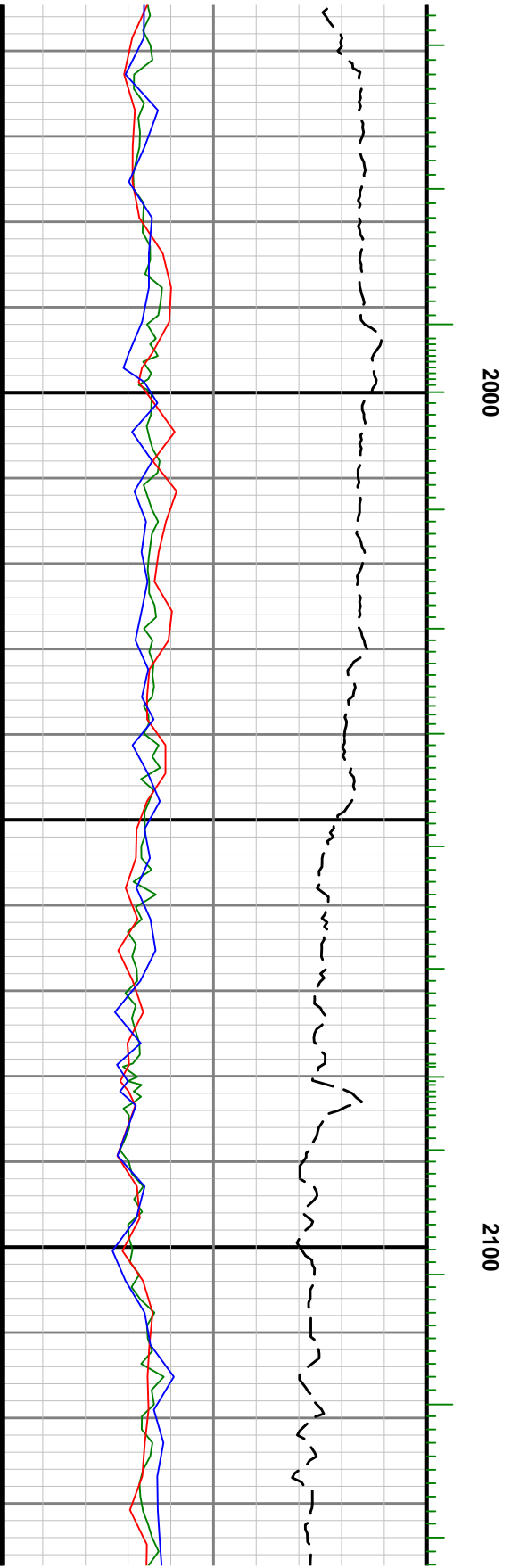
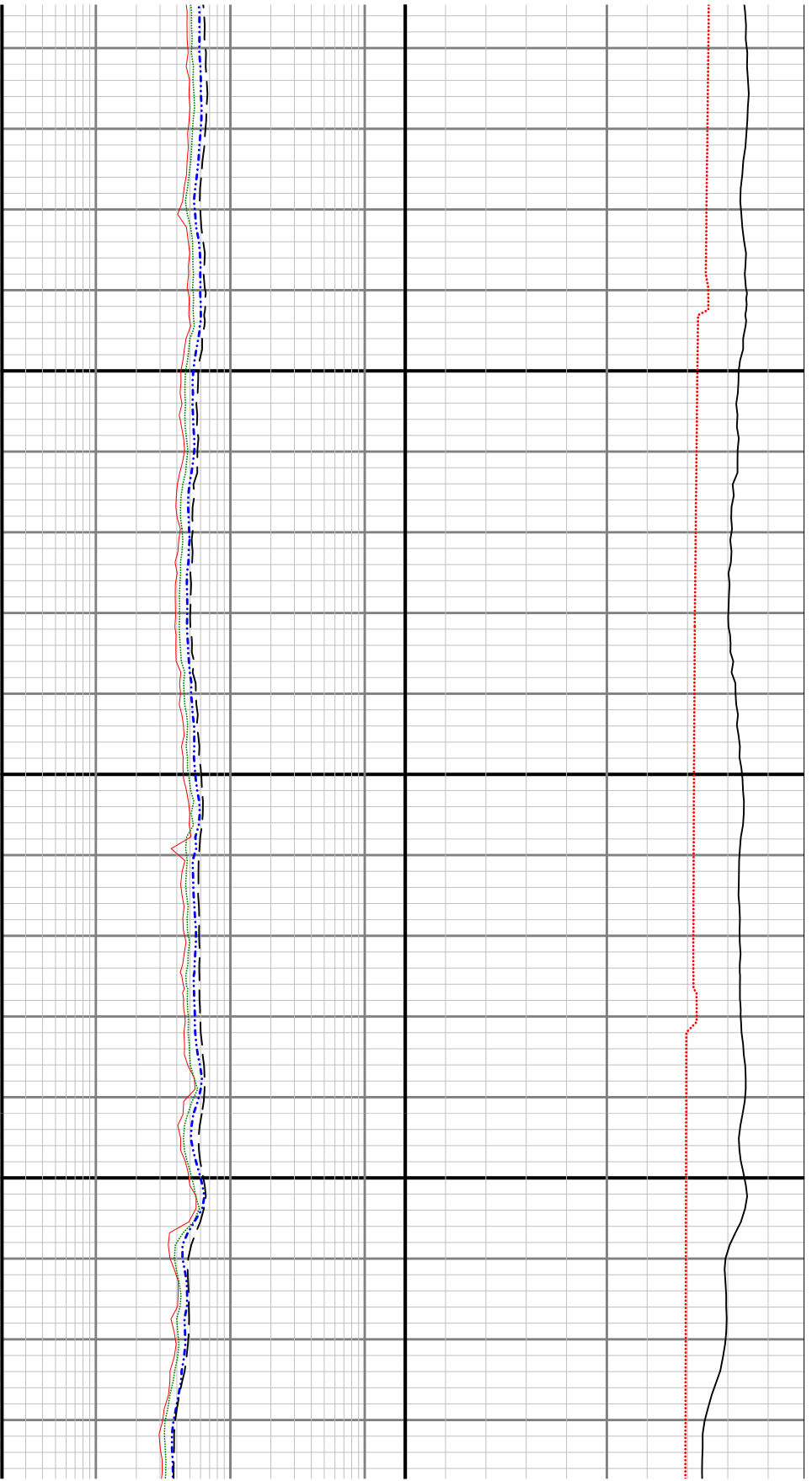
4.2.8155.1

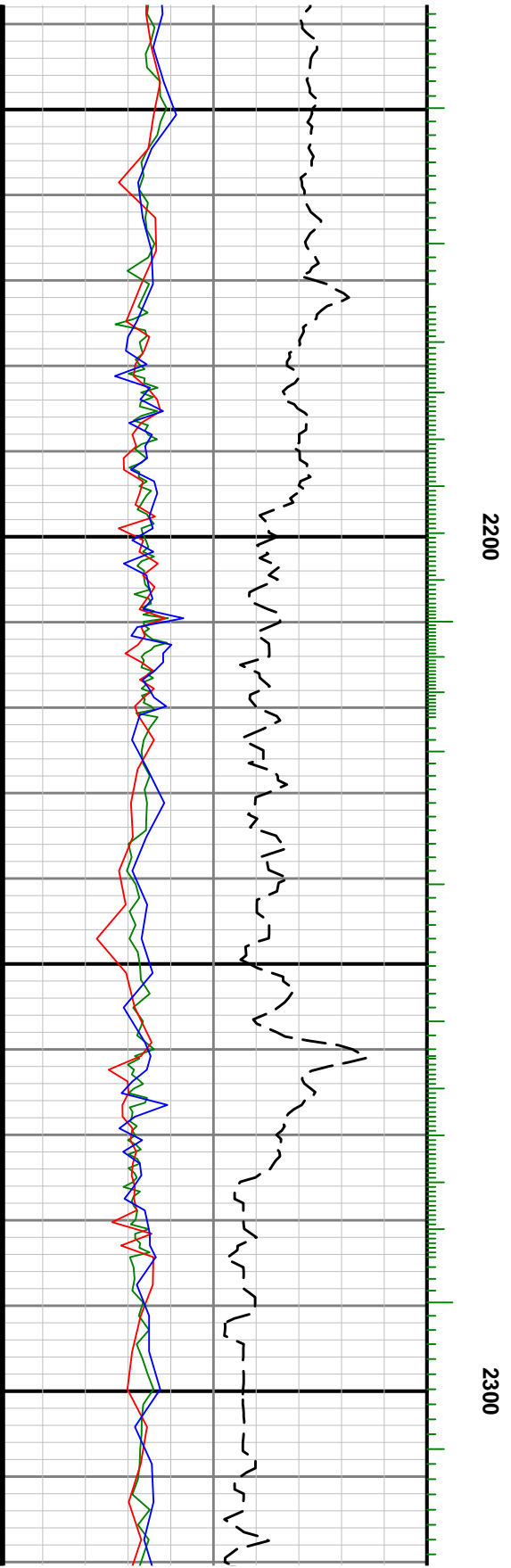
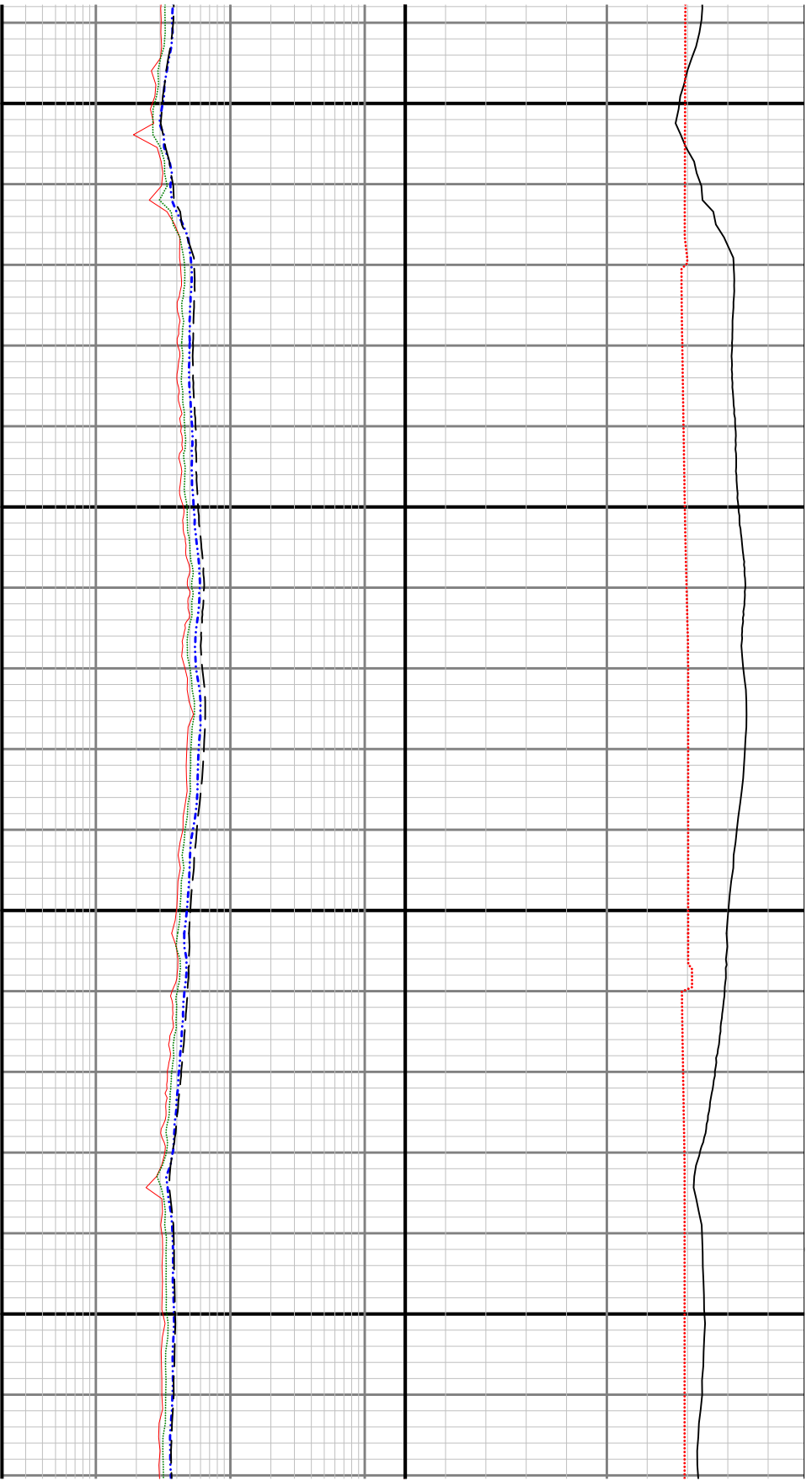
© 2018 Baker Hughes, a GE company, LLC – All rights reserved. Baker Hughes, a GE company, LLC and its affiliates (“BHGE”) provides this information on an “as is” basis for general information purposes and believes it to be accurate as of the date of publication. BHGE does not make any representation as to the accuracy or completeness of the information and makes no warranties of any kind, specific, implied or oral, to the fullest extent permissible by law, including those of merchantability and fitness for a particular purpose or use. BHGE hereby disclaims any and all liability for any direct, indirect, consequential or special damages, claims for lost profits, or third party claims arising from the use of the information, whether a claim is asserted in contract, tort, or otherwise. The BHGE logo is a trademark of Baker Hughes, a GE company, LLC. GE and the GE monogram are trademarks of General Electric Company used under trademark license.

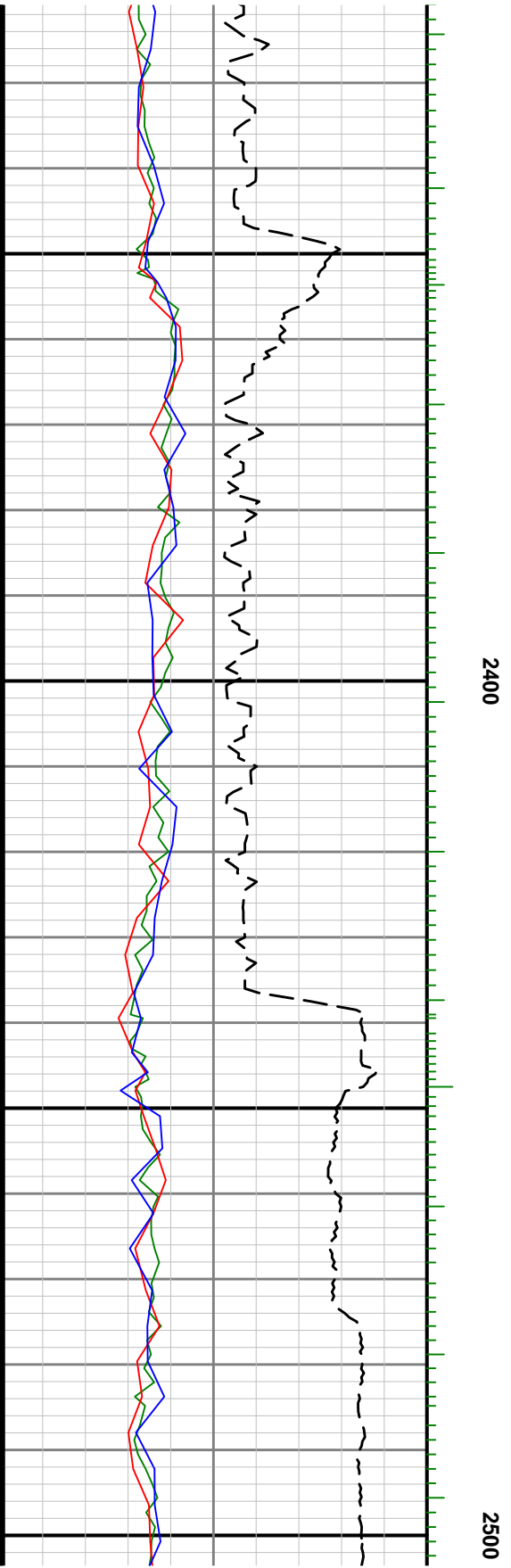
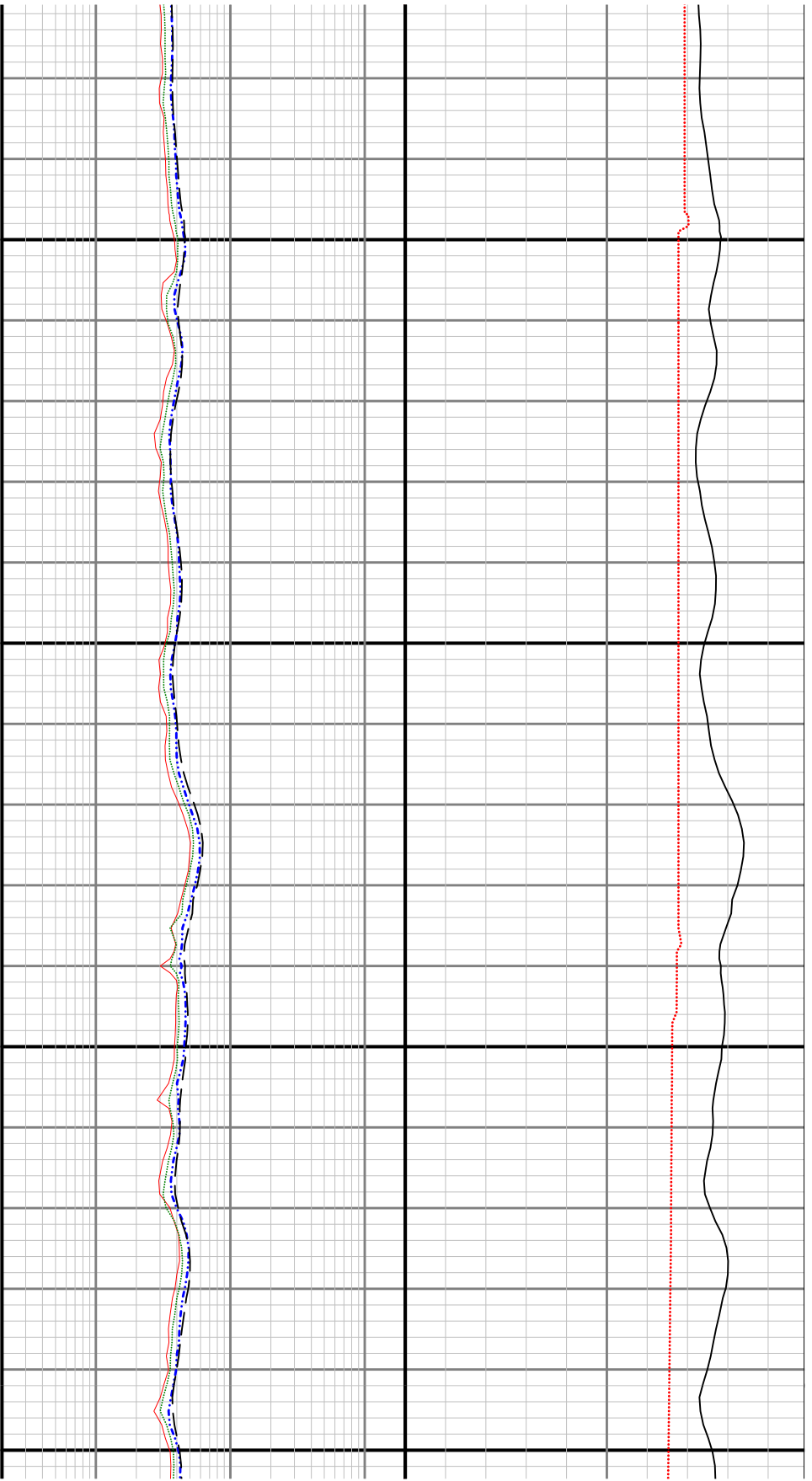


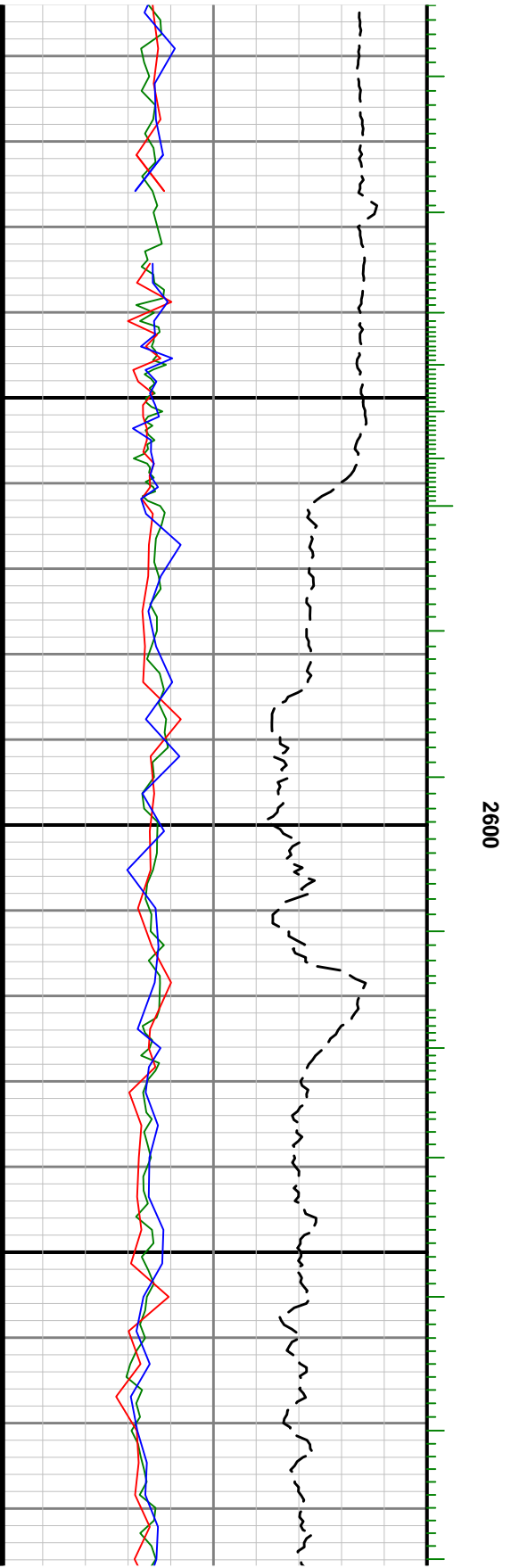
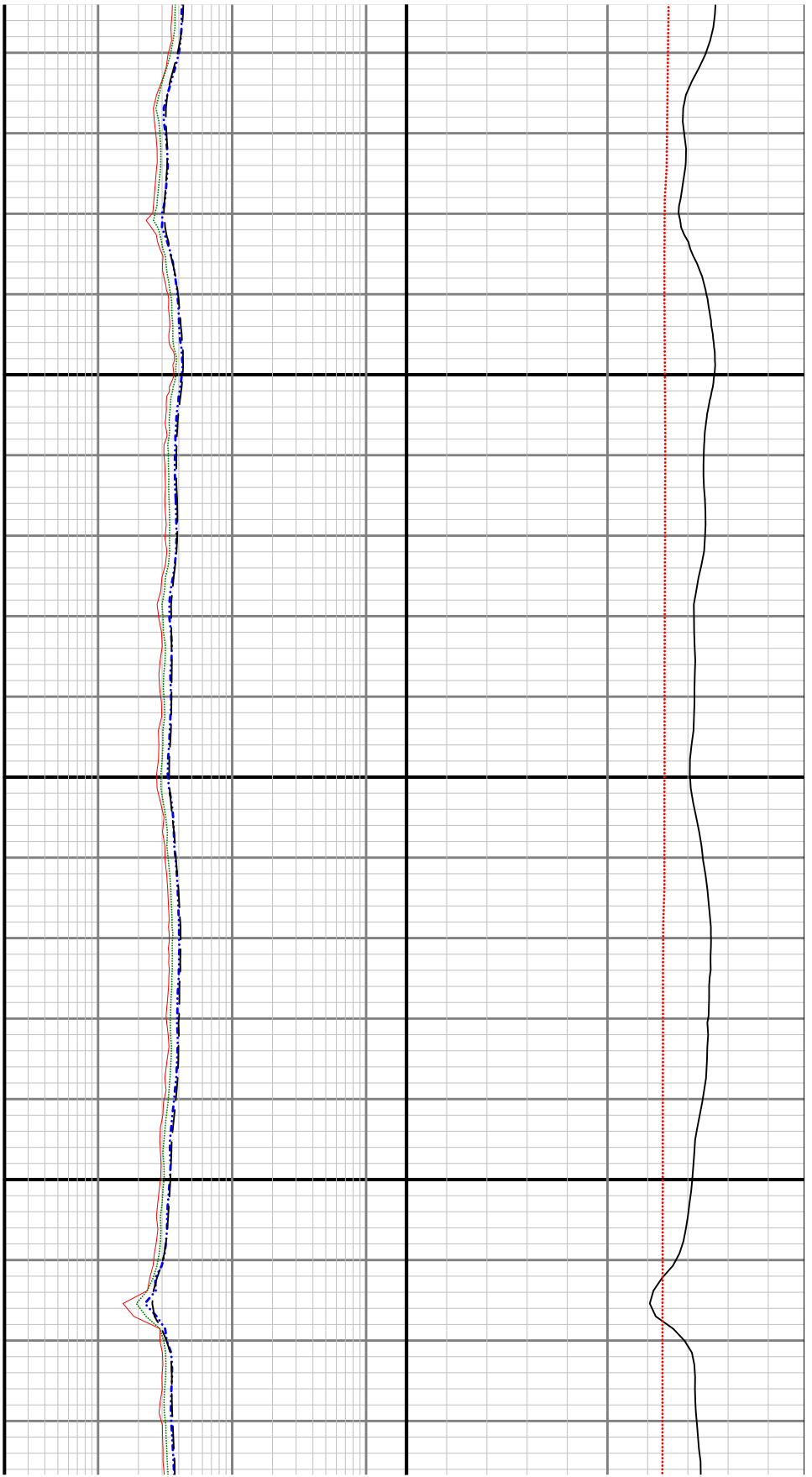
RPCHM	Resistivity Phase - Corrected - 2MHz	ohm.m
RPCLM	Resistivity Phase - Corrected - 400kHz	ohm.m
RPTHM	Resistivity Time Since Drilled	min
RPSIM	Sliding Indicator	unitless
ROPA	Depth Averaged ROP	ft/h
GRAM	Gamma Ray - Apparent	API
GRIM	Gamma Ray Data Point Indicator	unitless
GRADM	Gamma Ray Apparent DOWN	API
GRAUM	Gamma Ray Apparent UP	API
TCDM	Downhole Temperature	degF

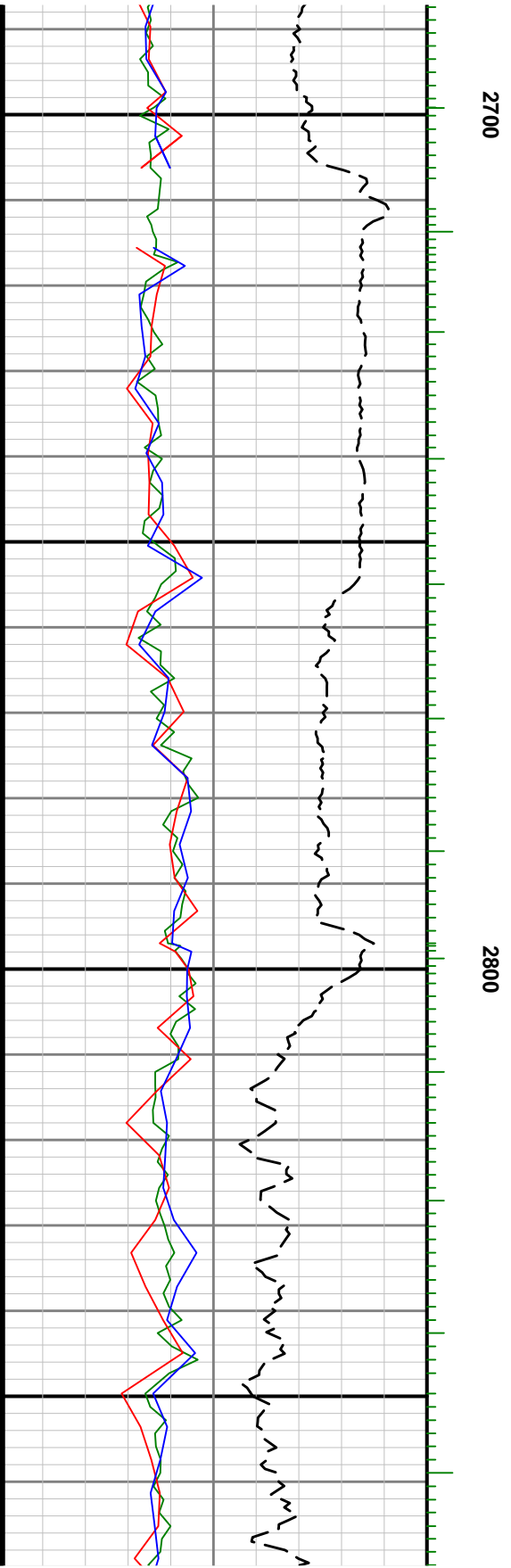
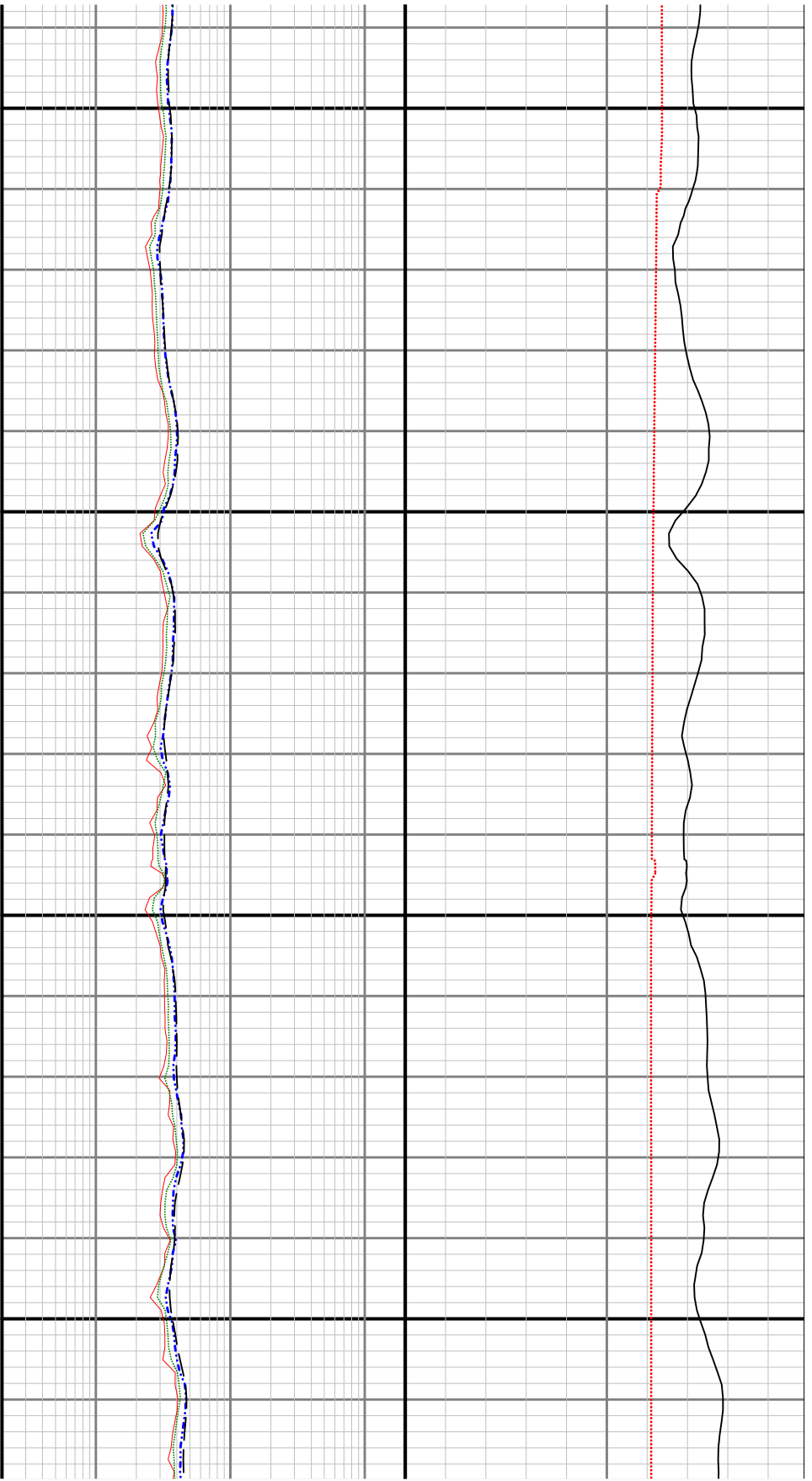




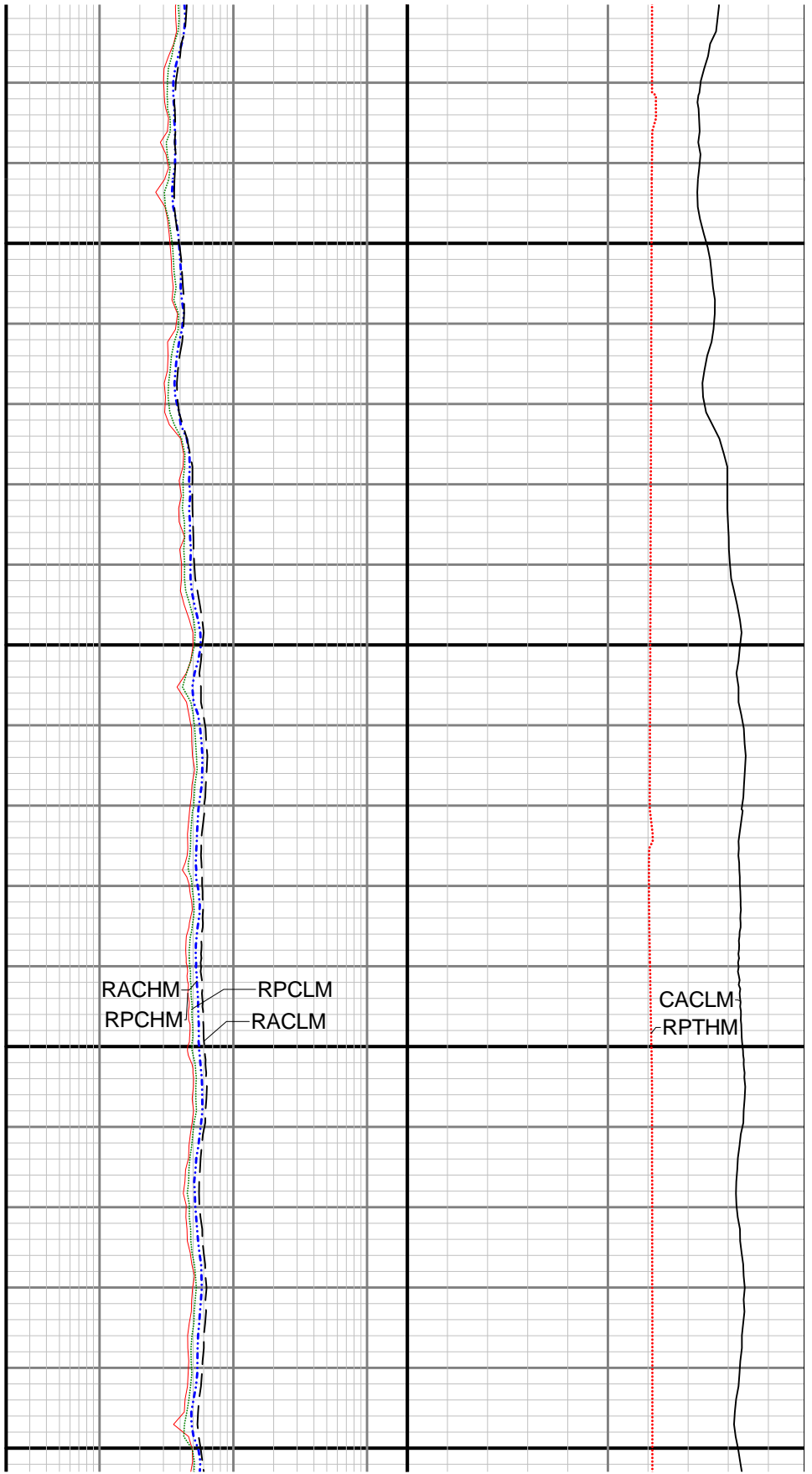
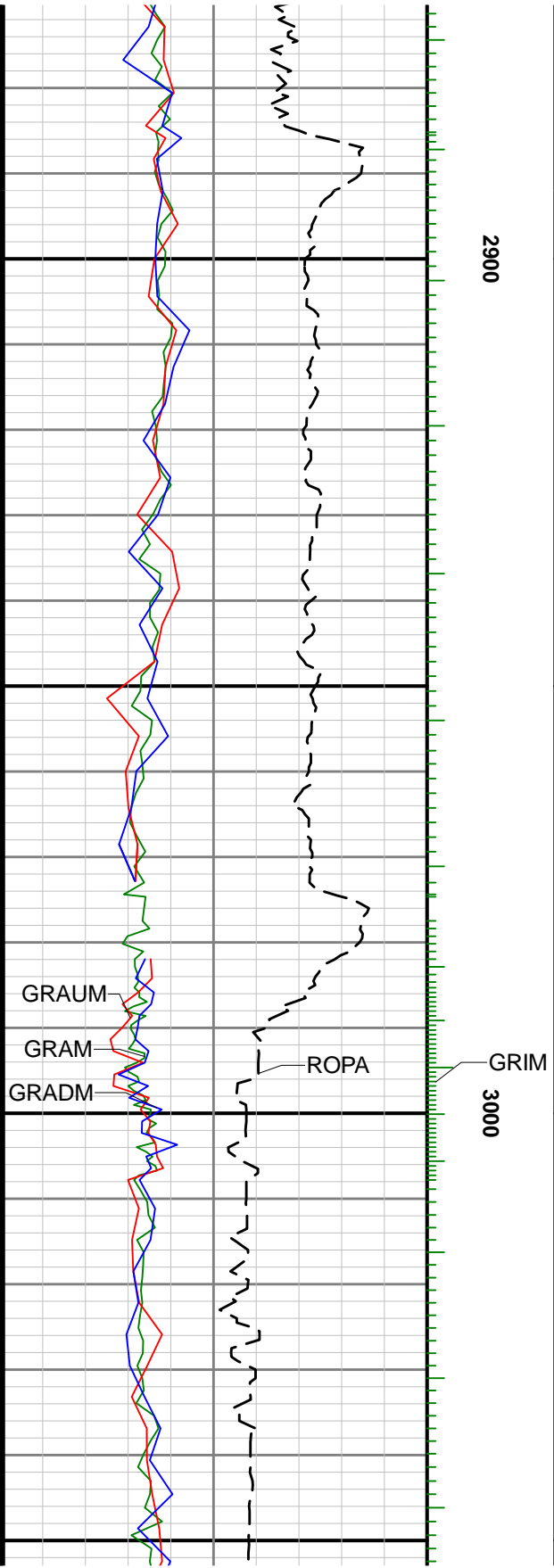


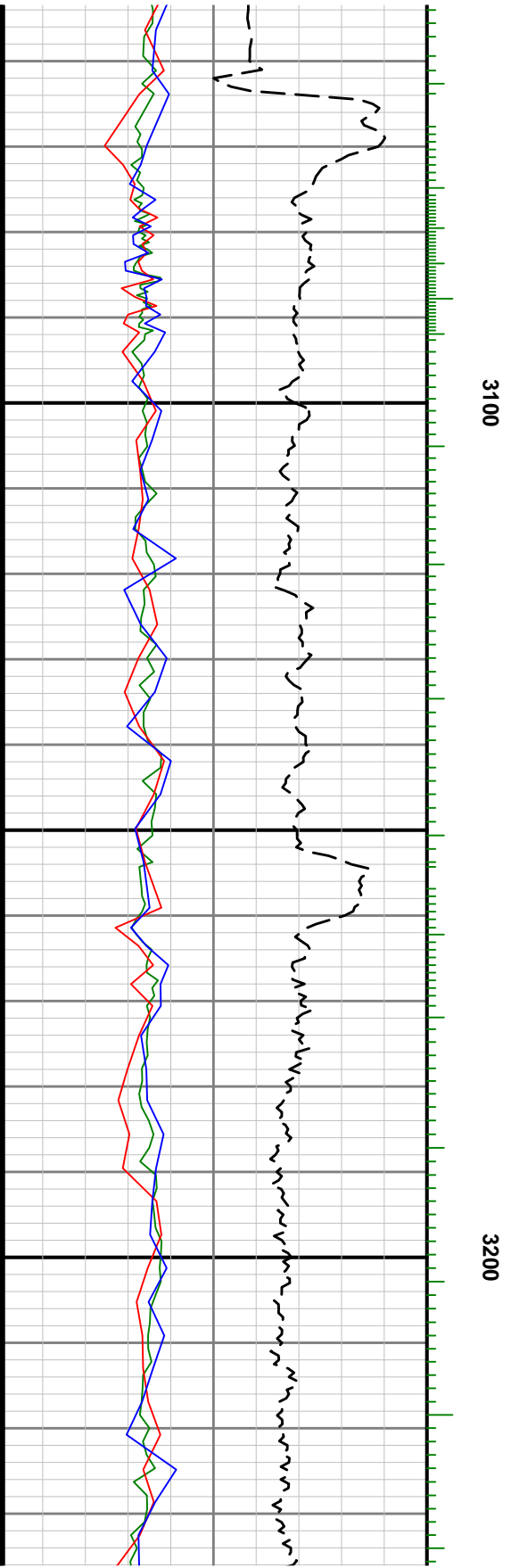
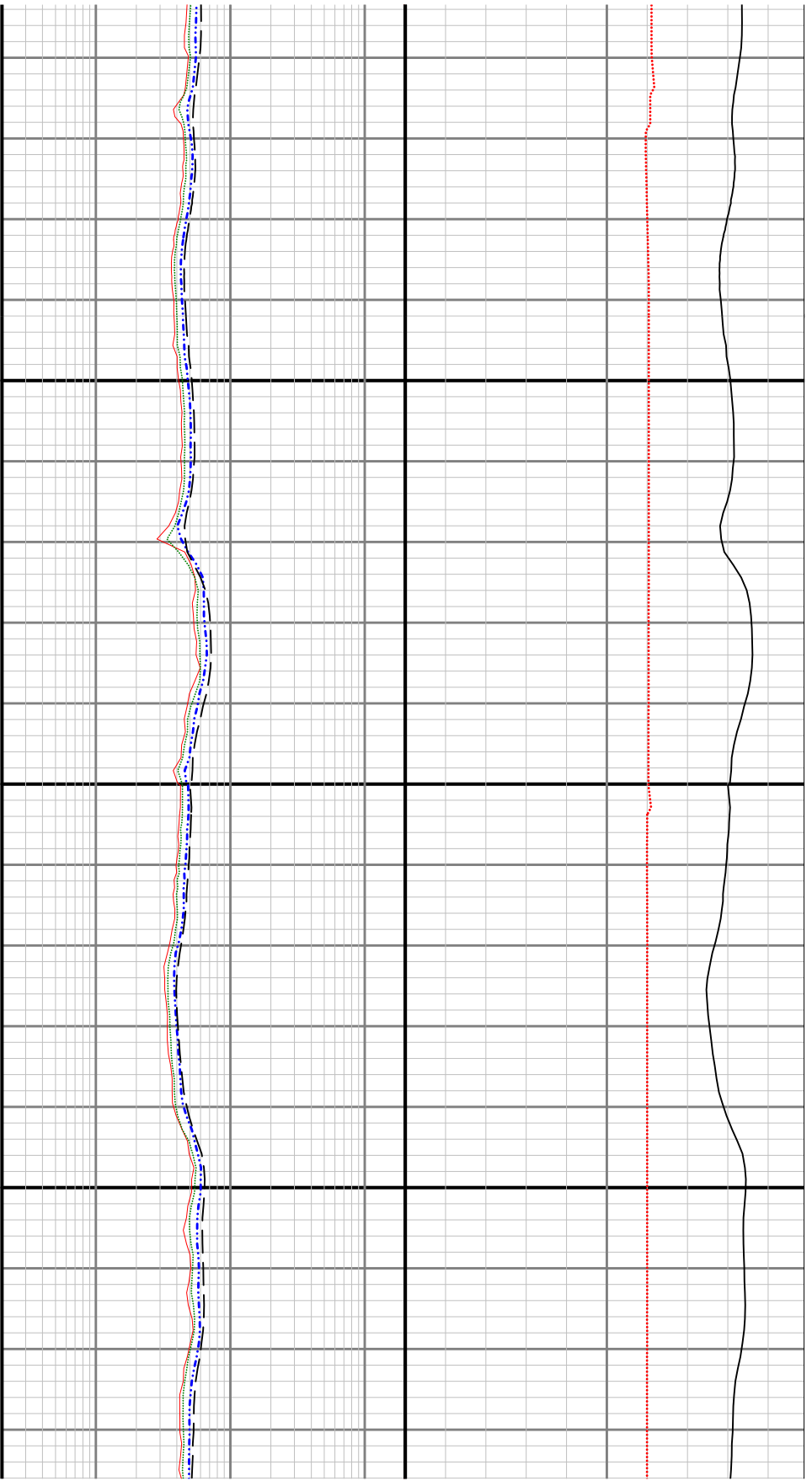


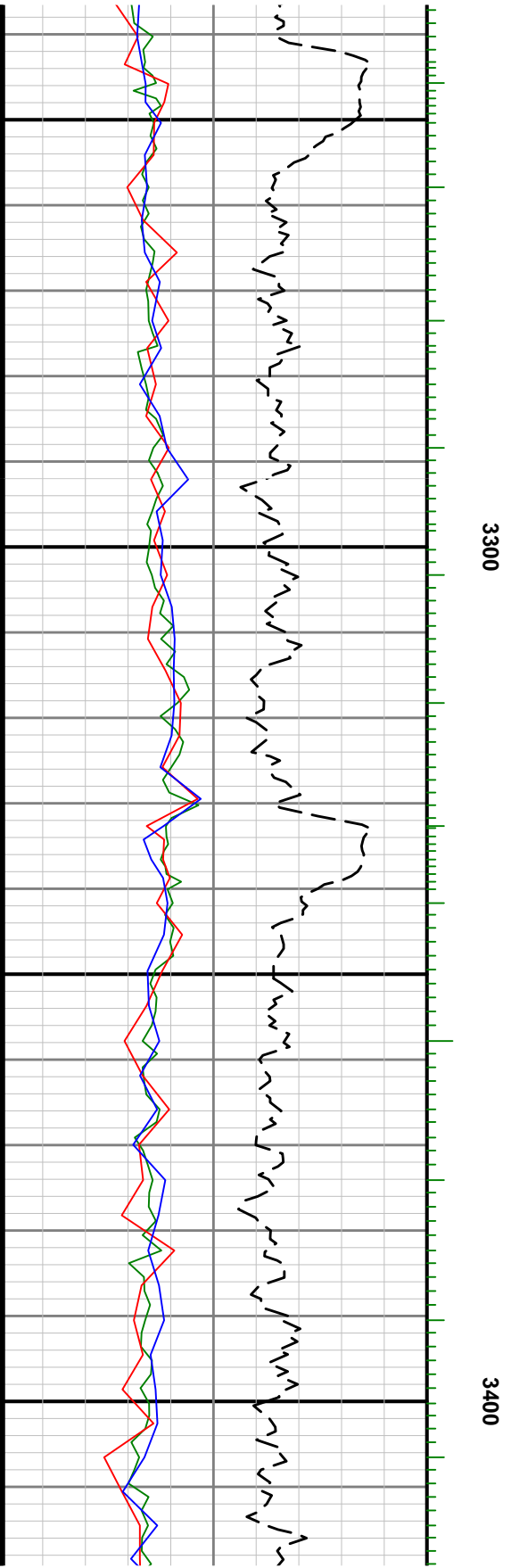


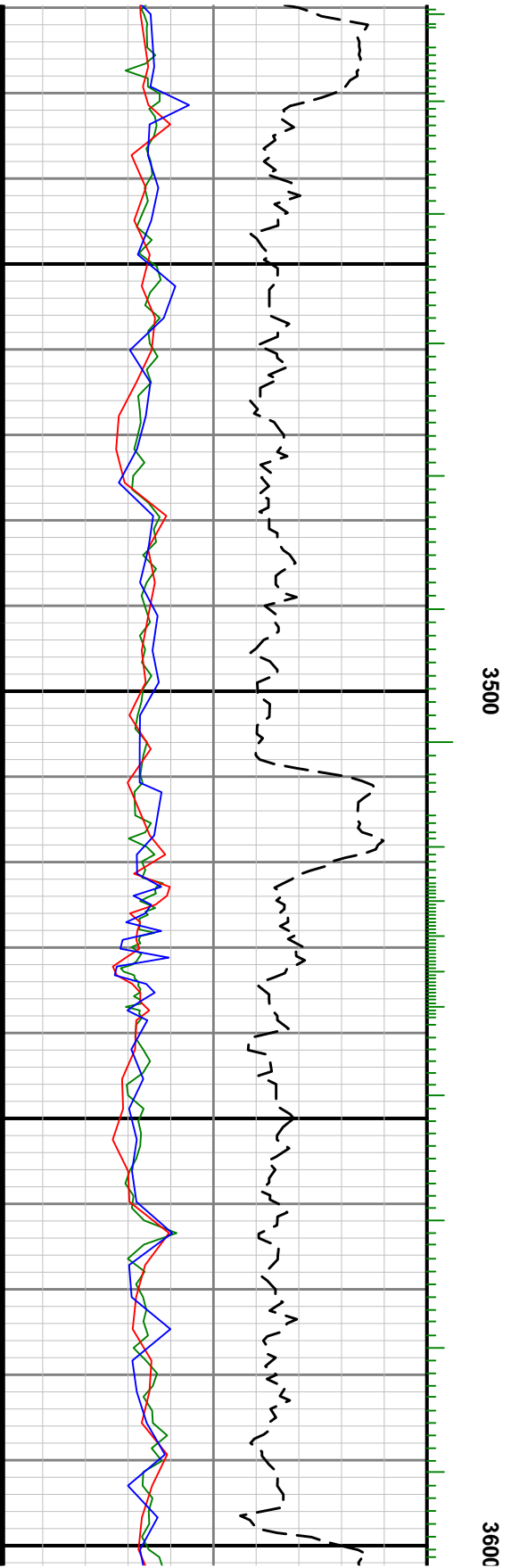
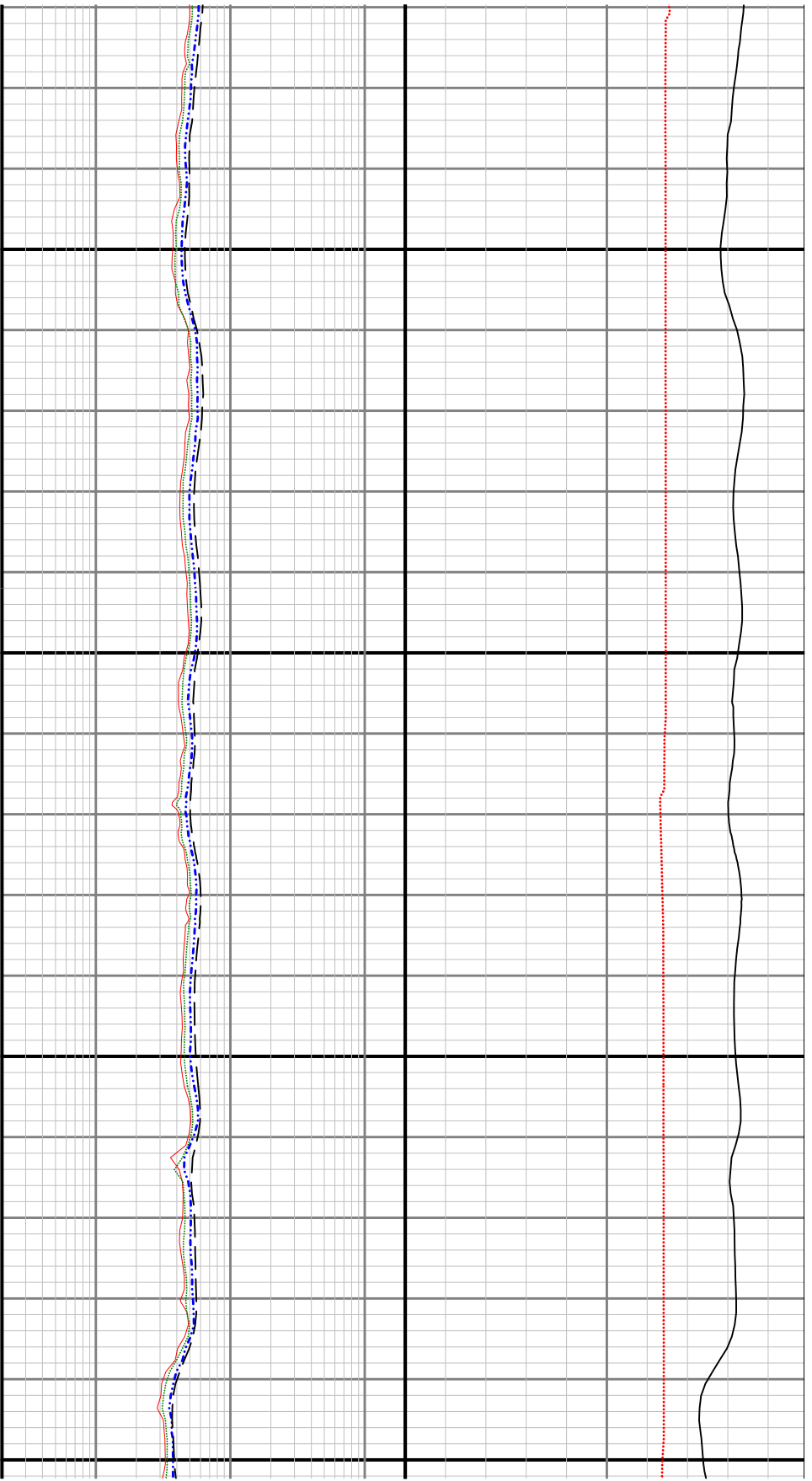


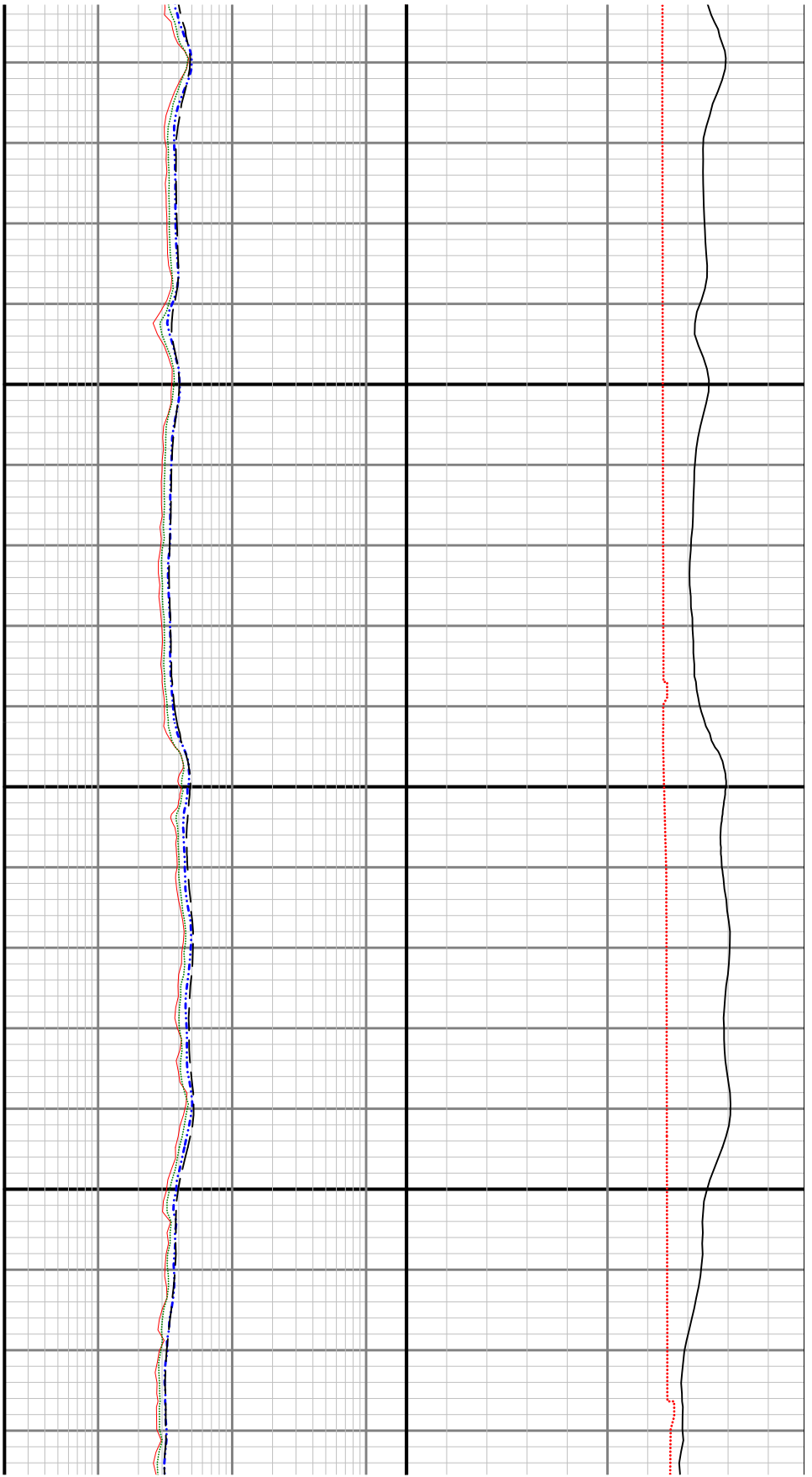




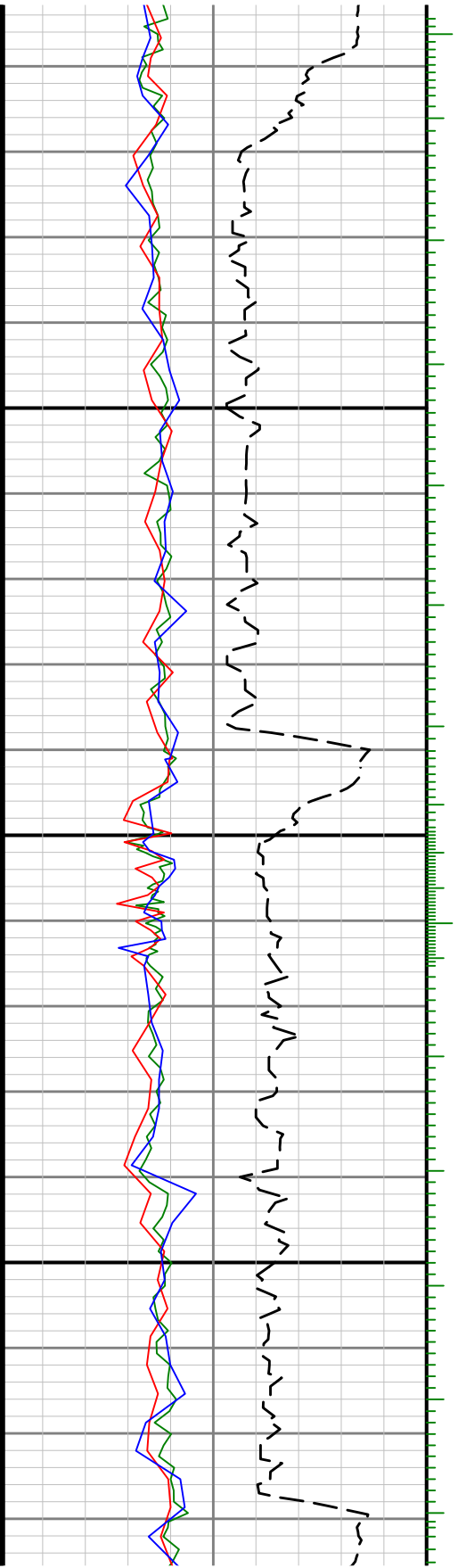


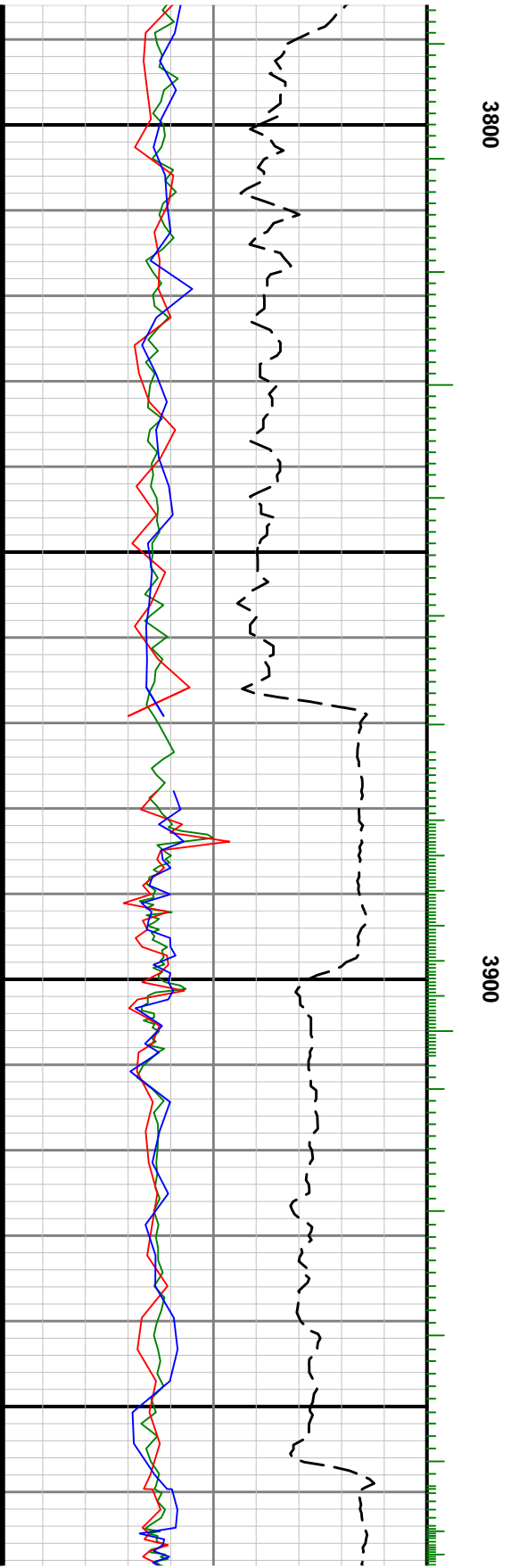


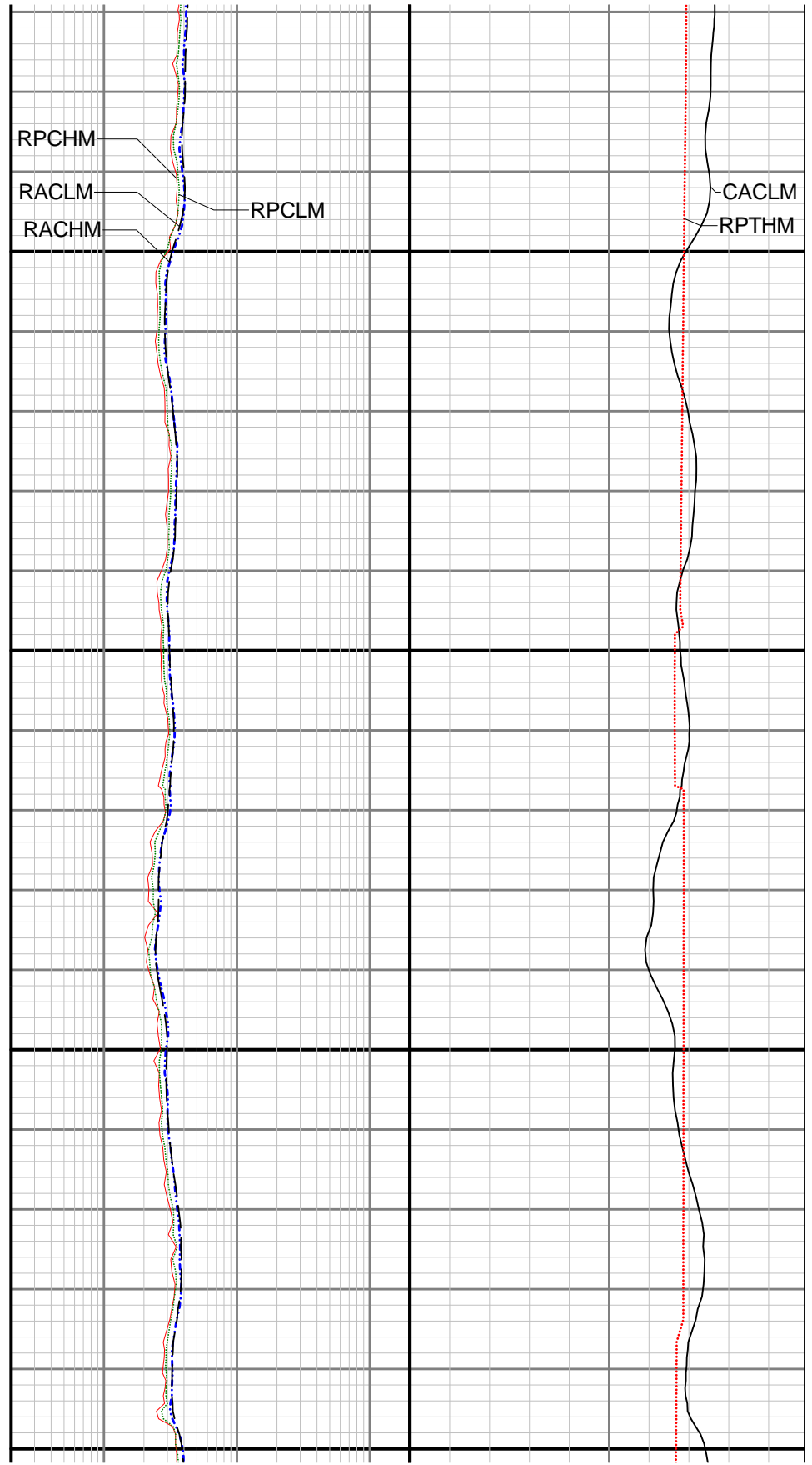
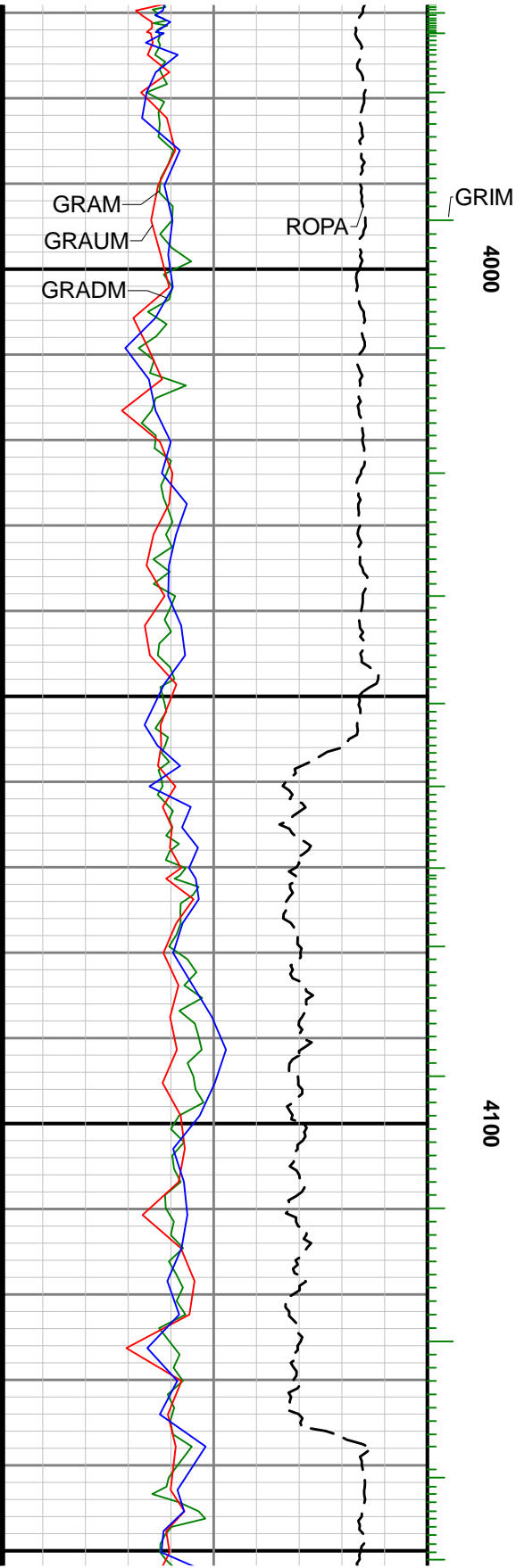


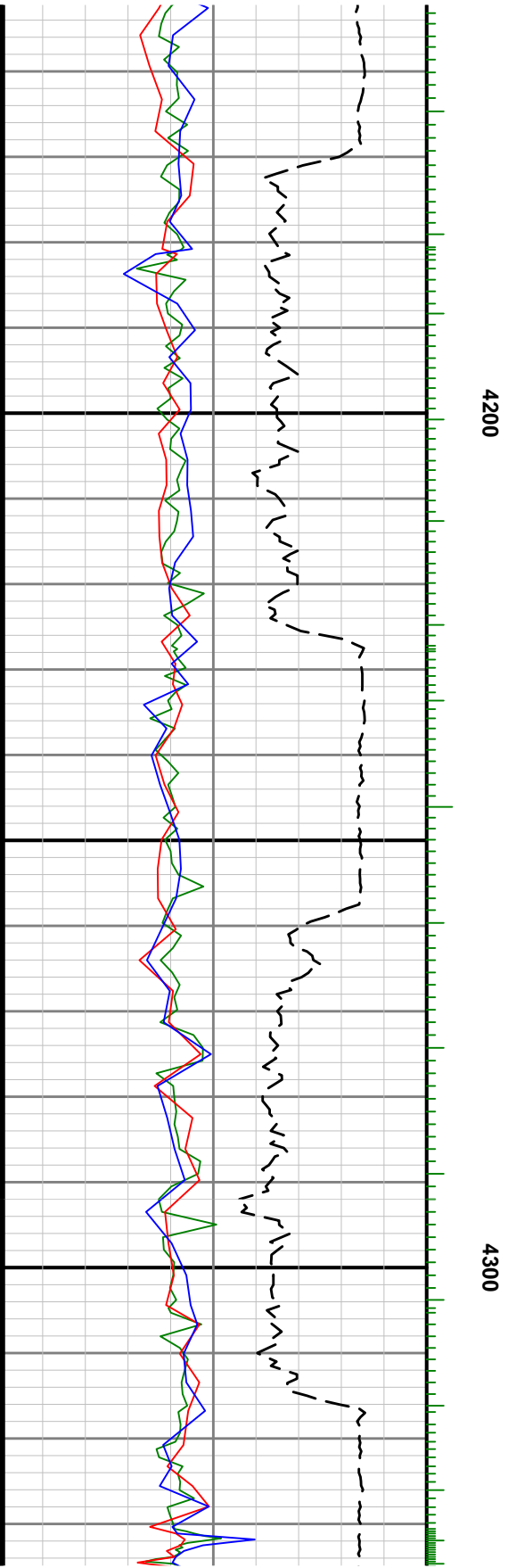
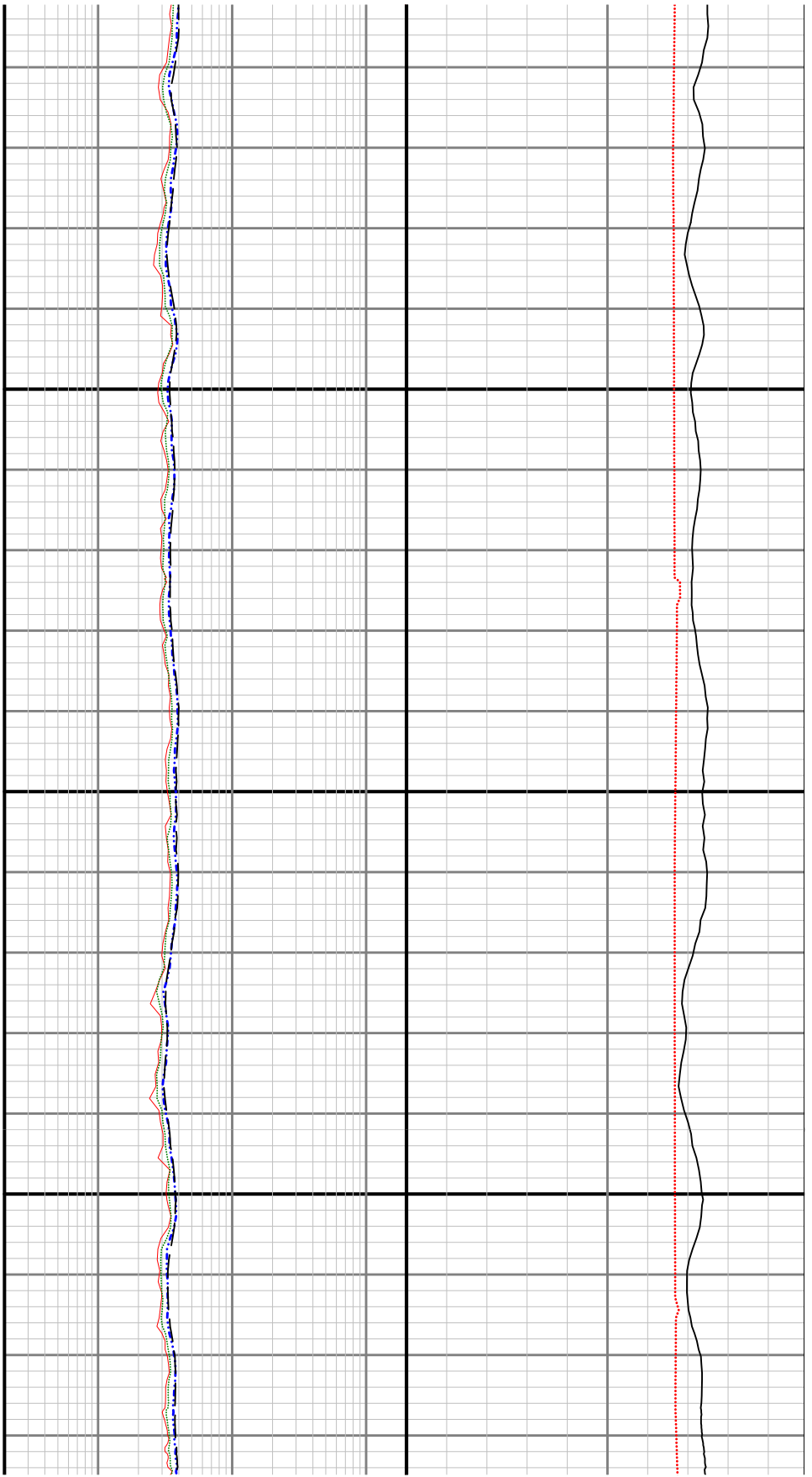


3700

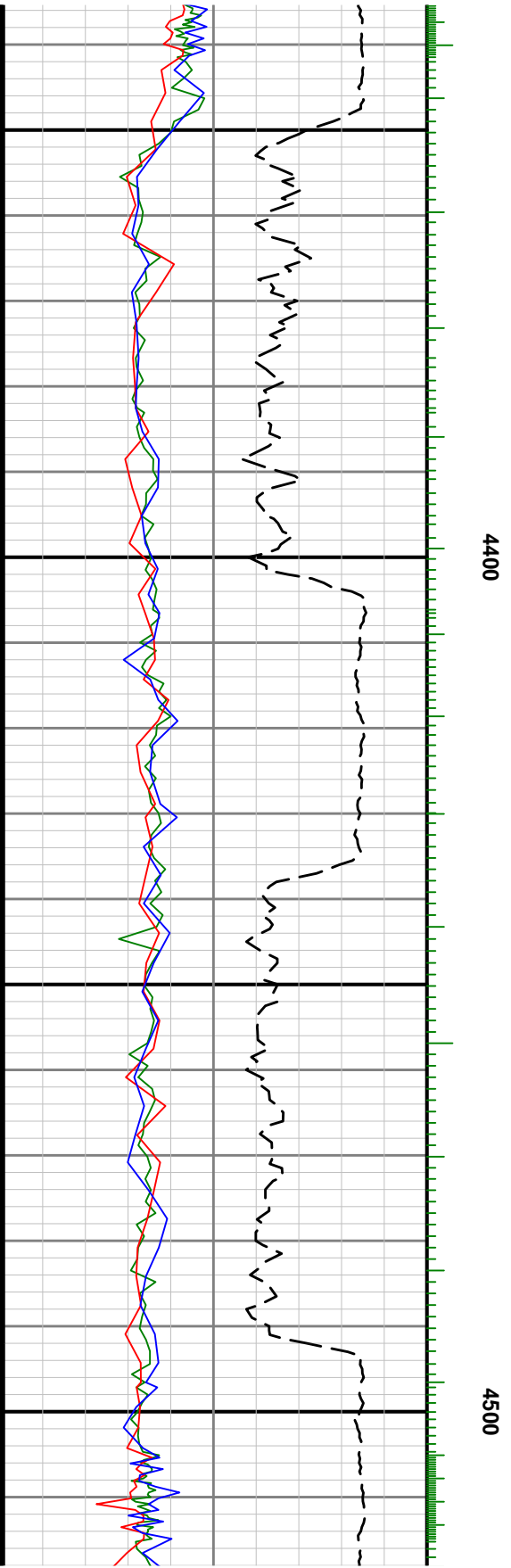
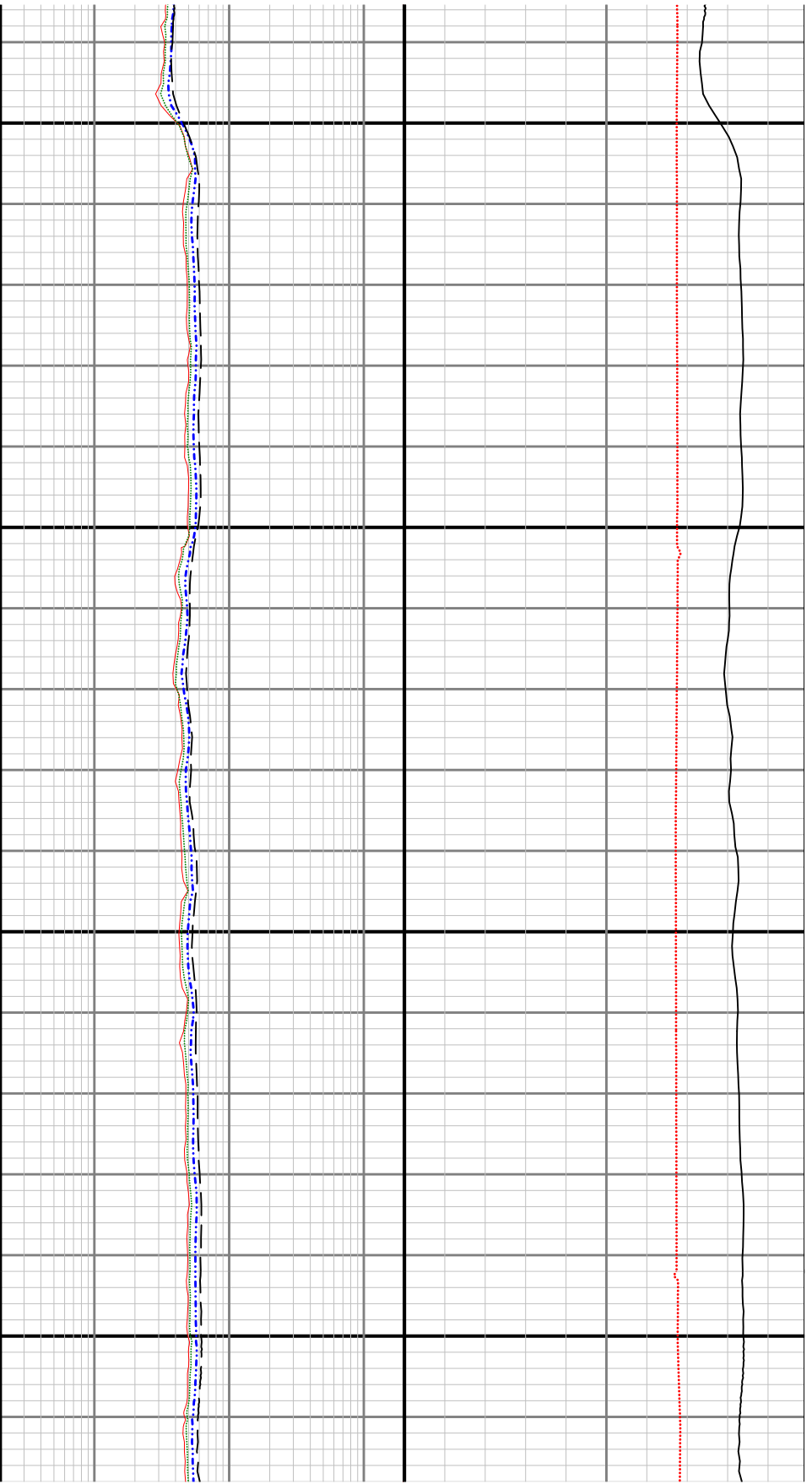


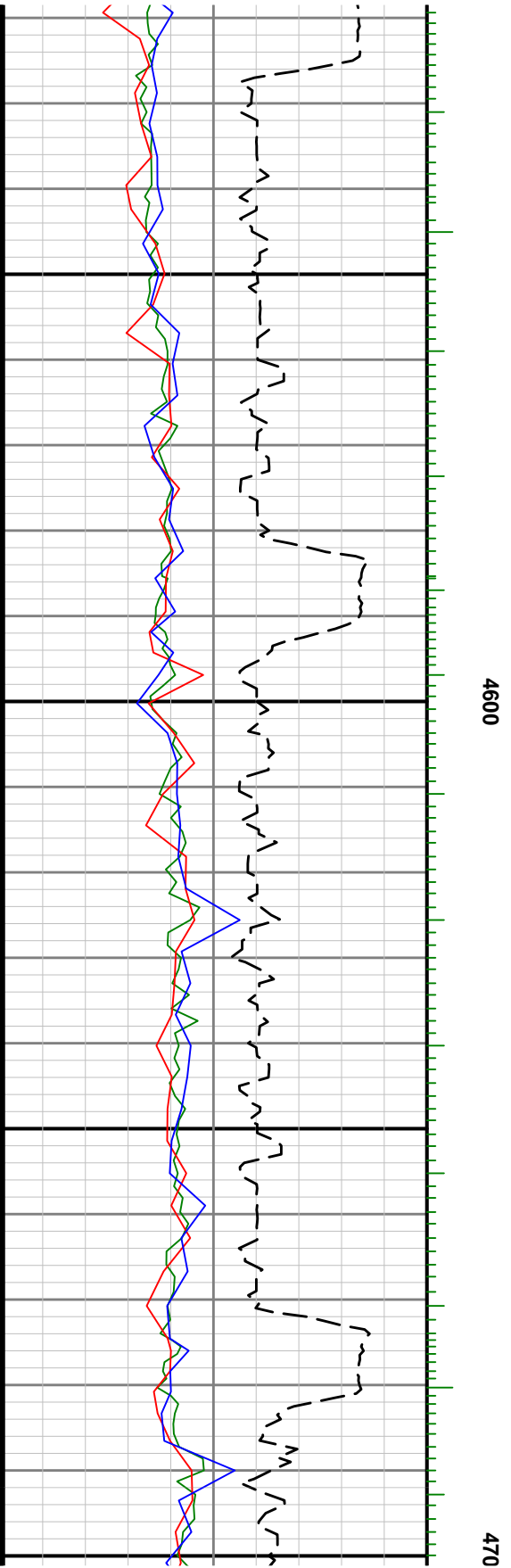
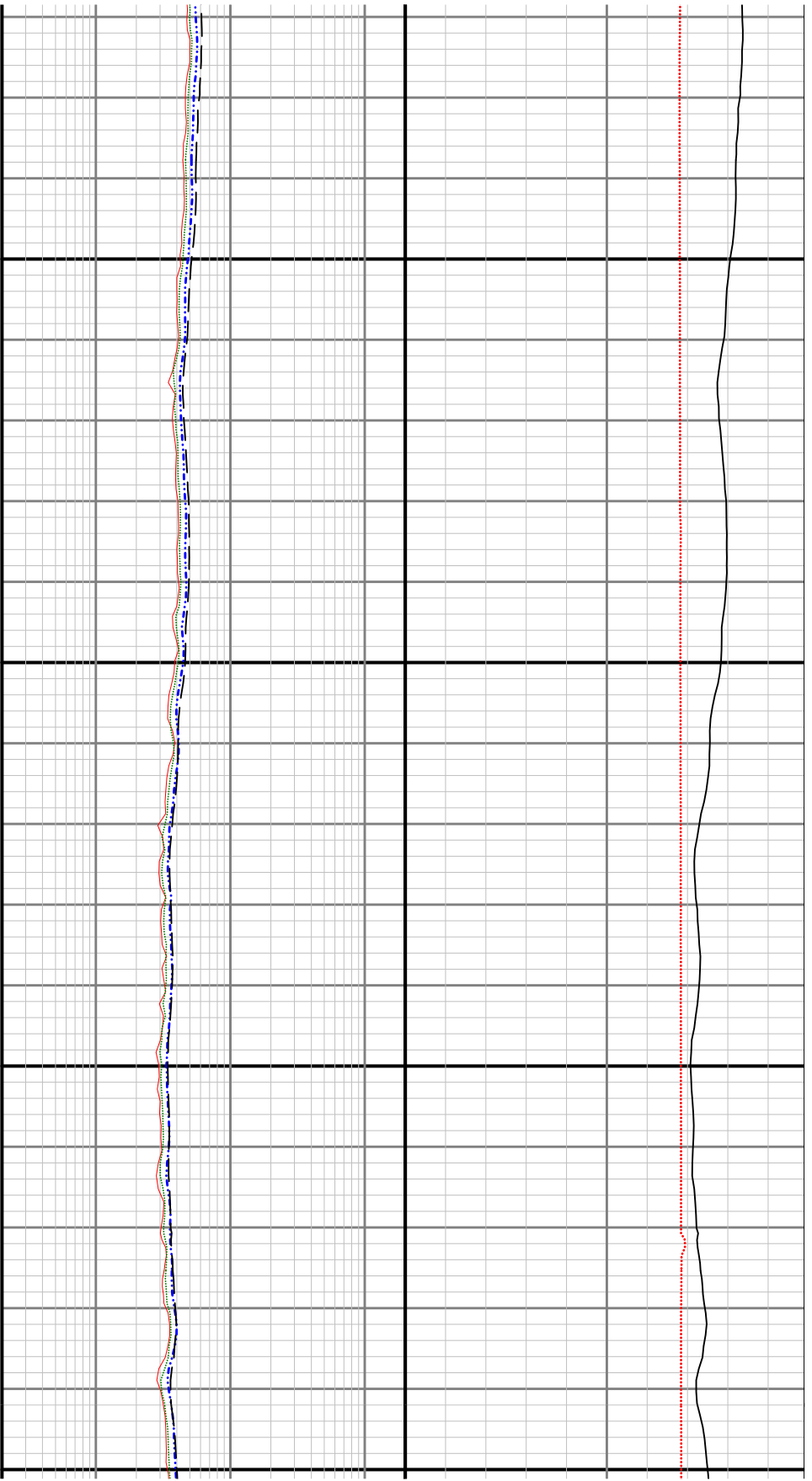


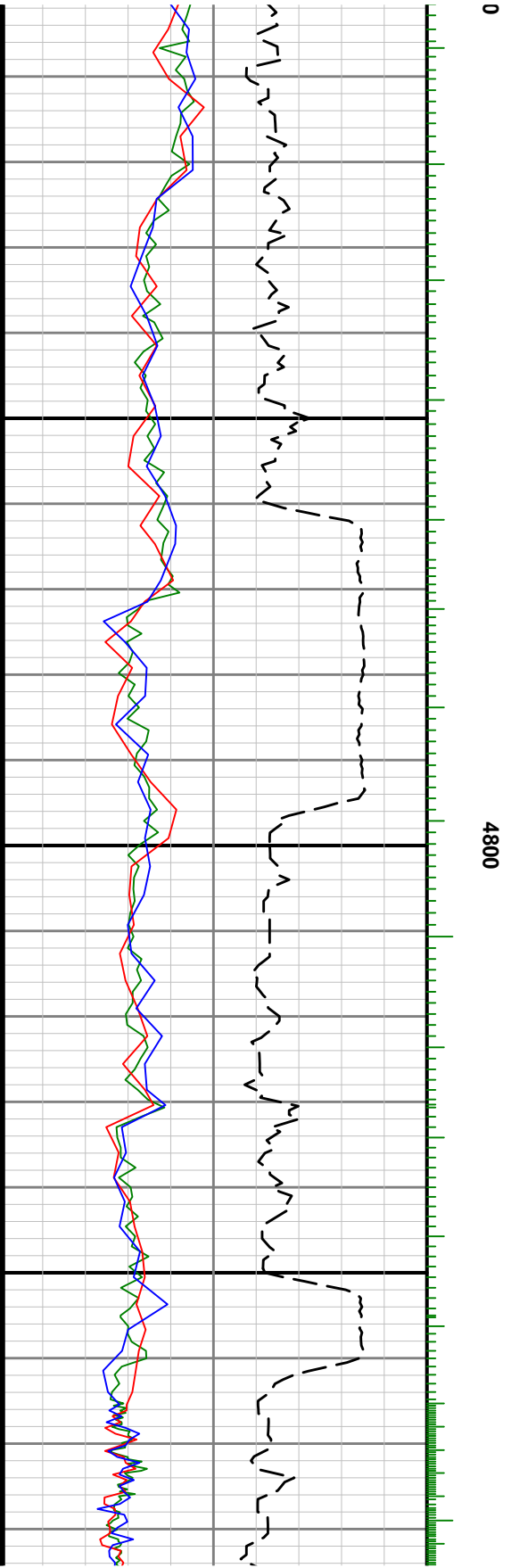
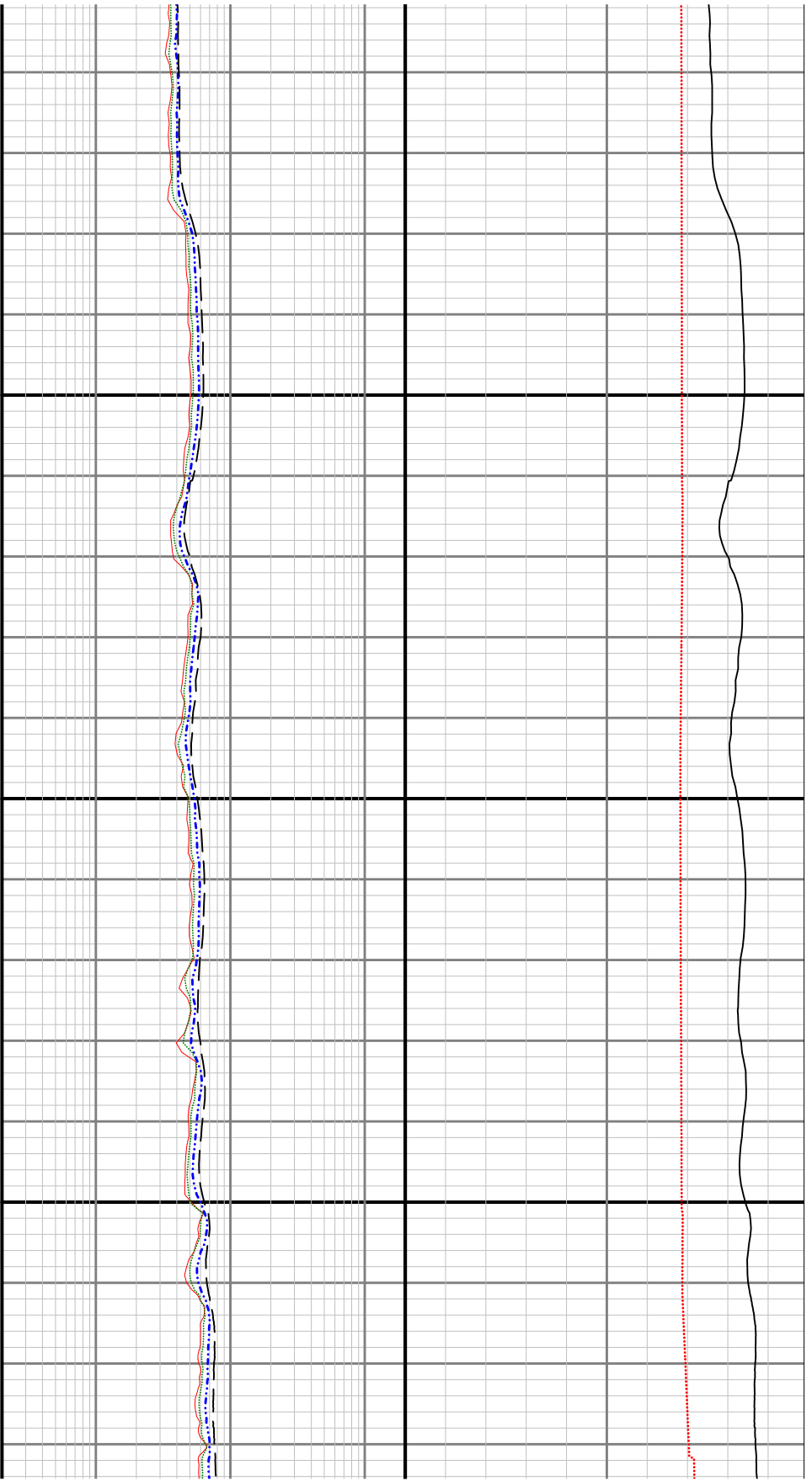


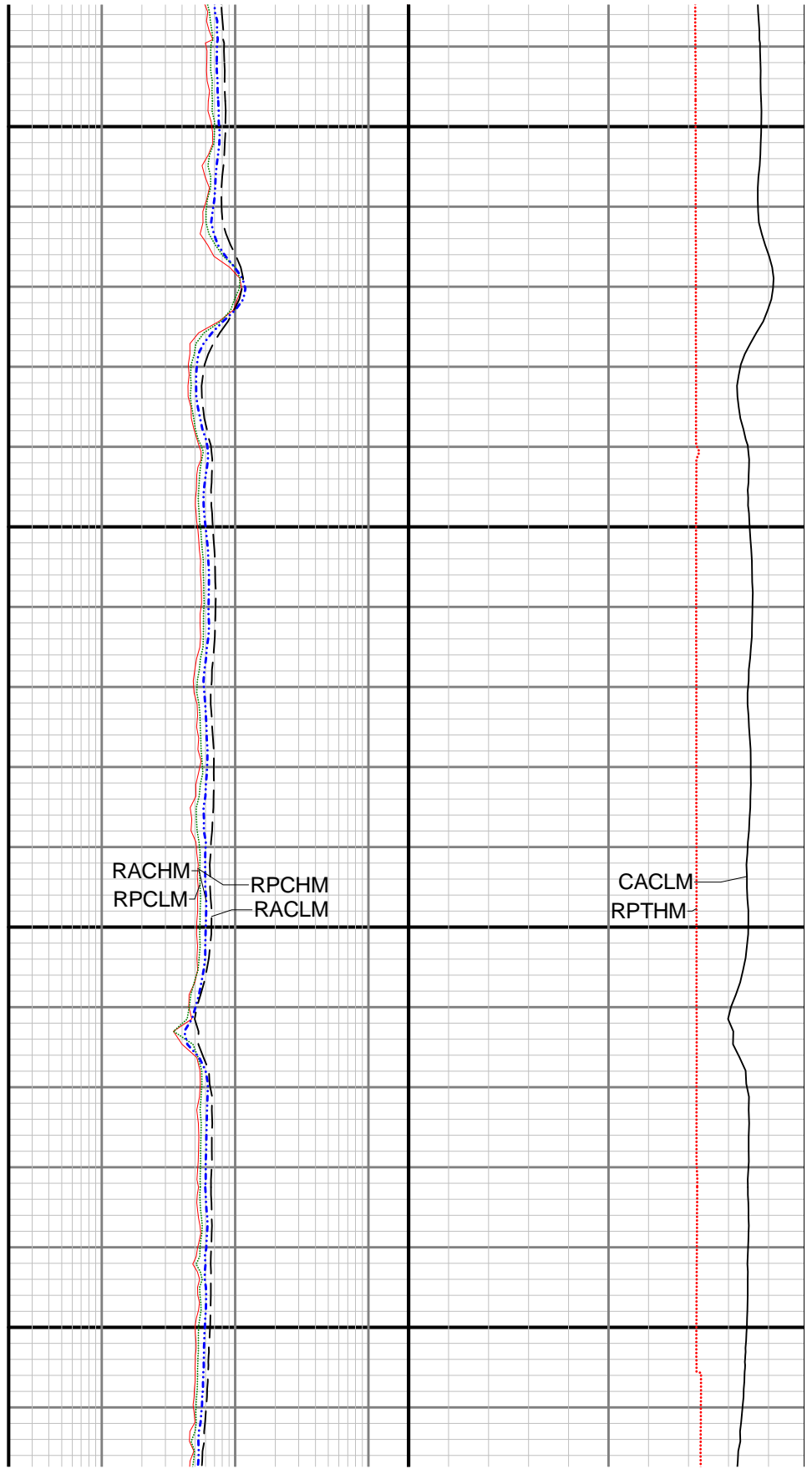
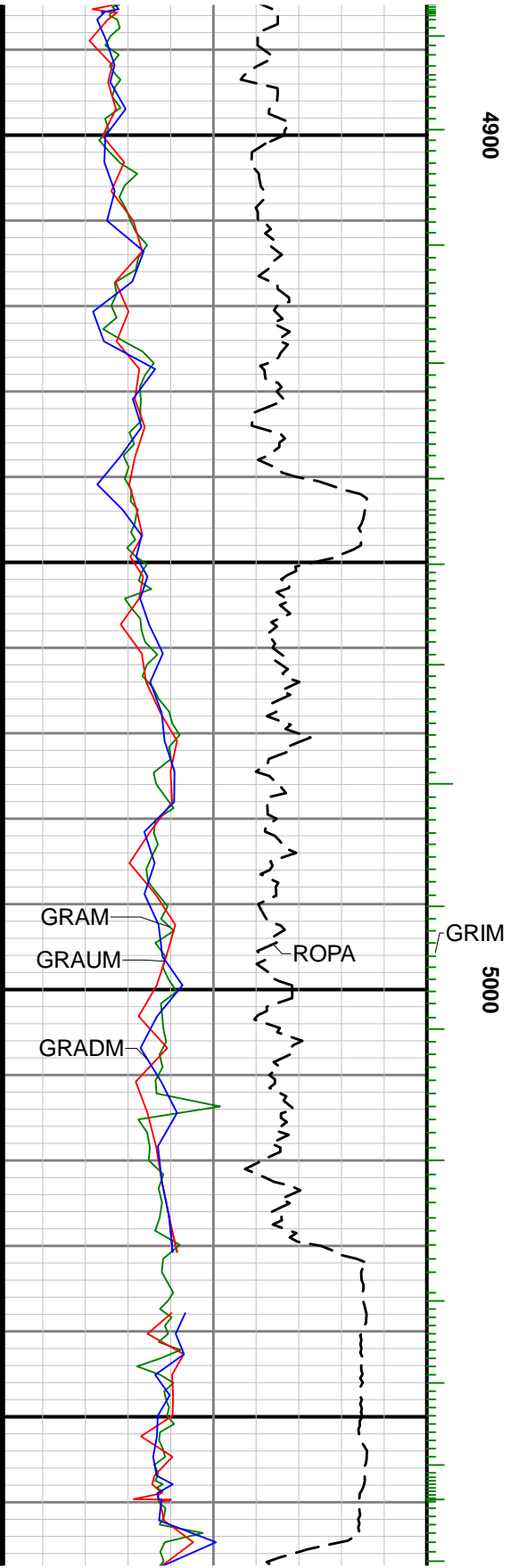




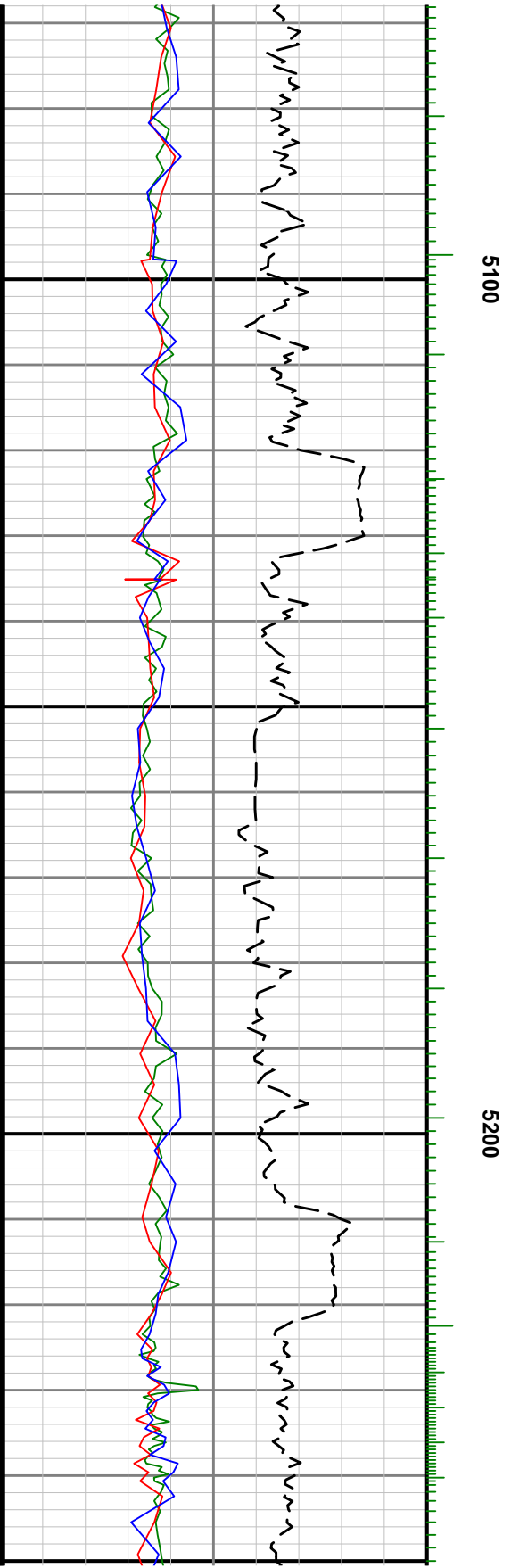


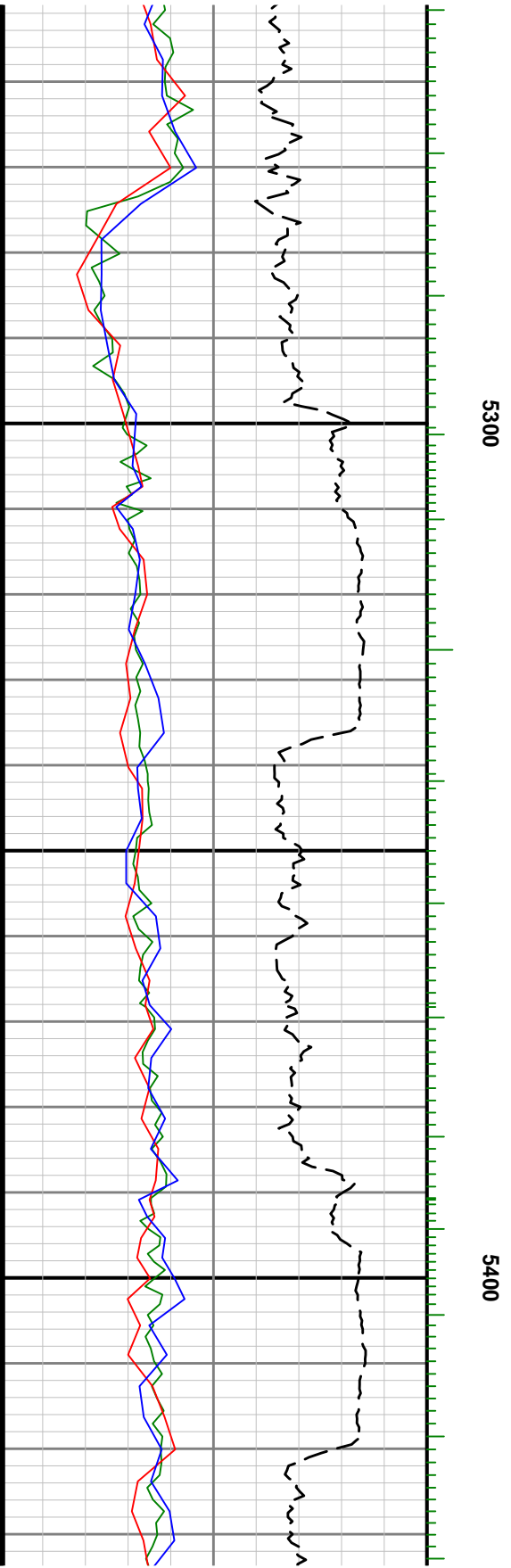
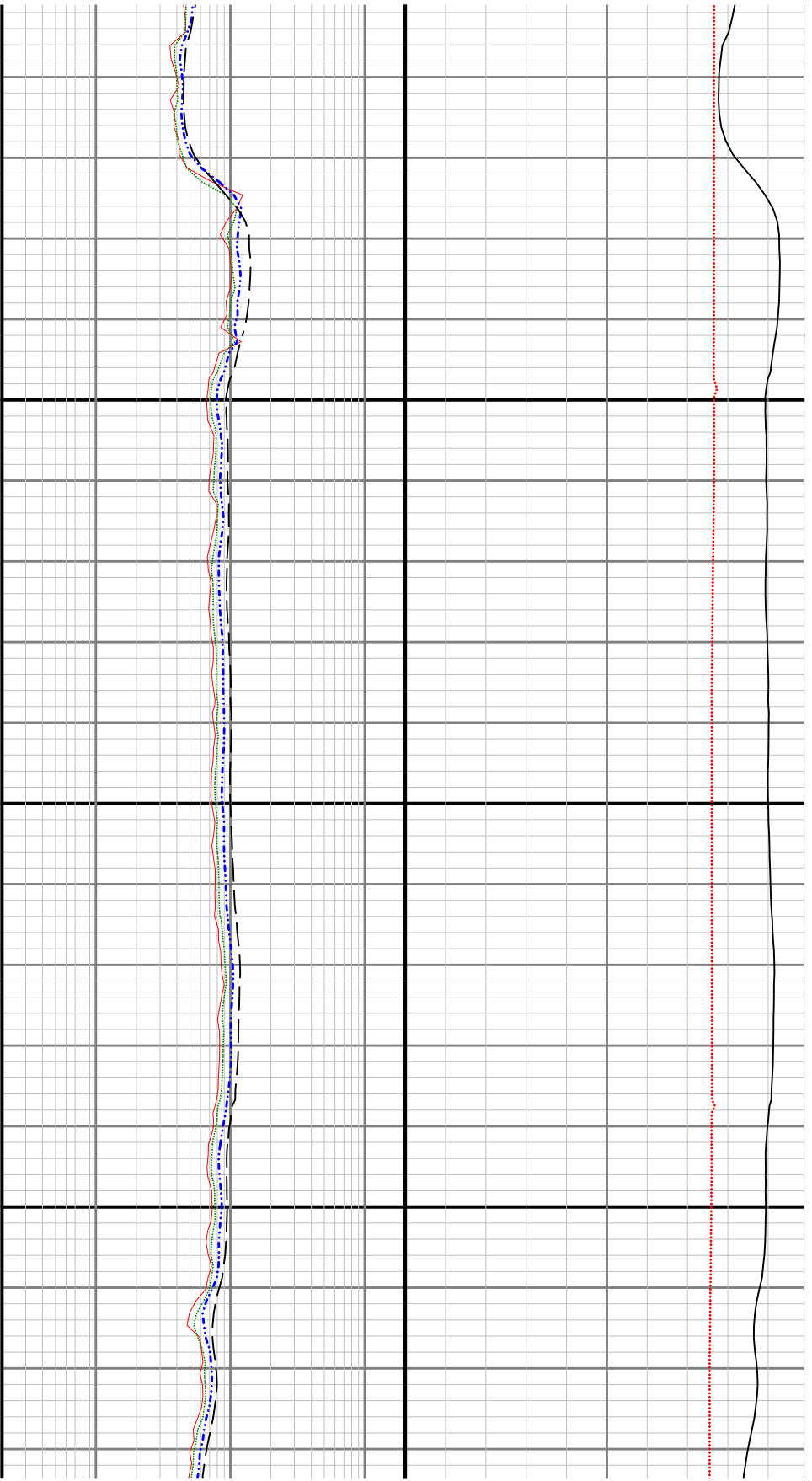


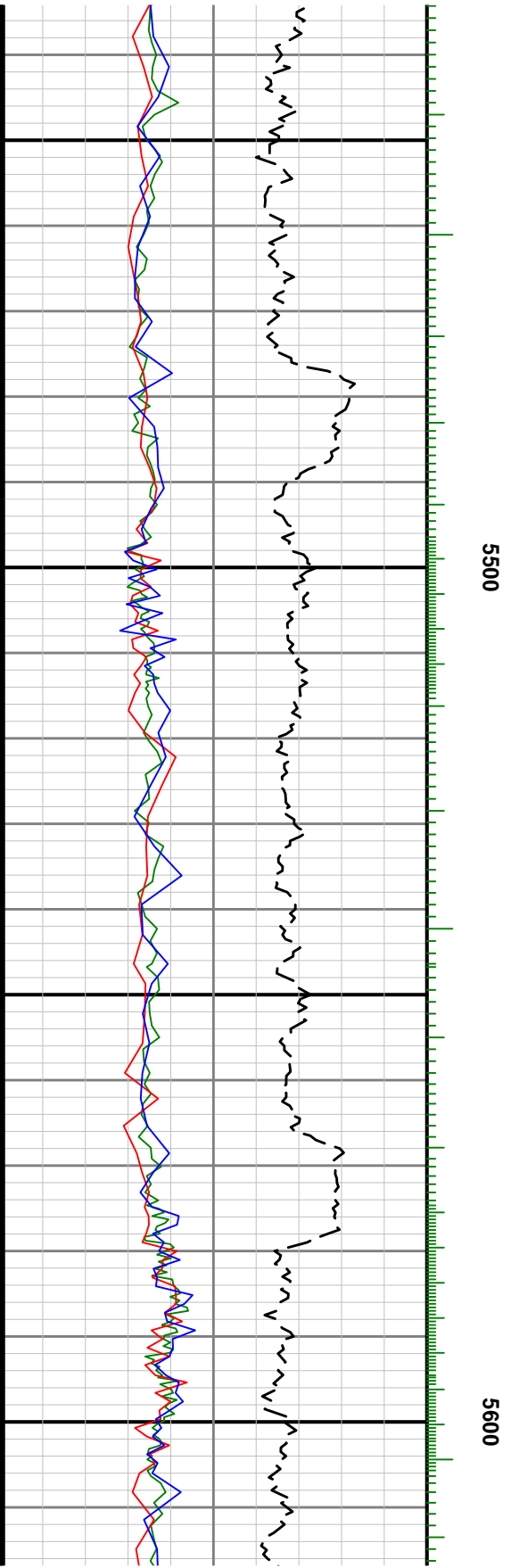
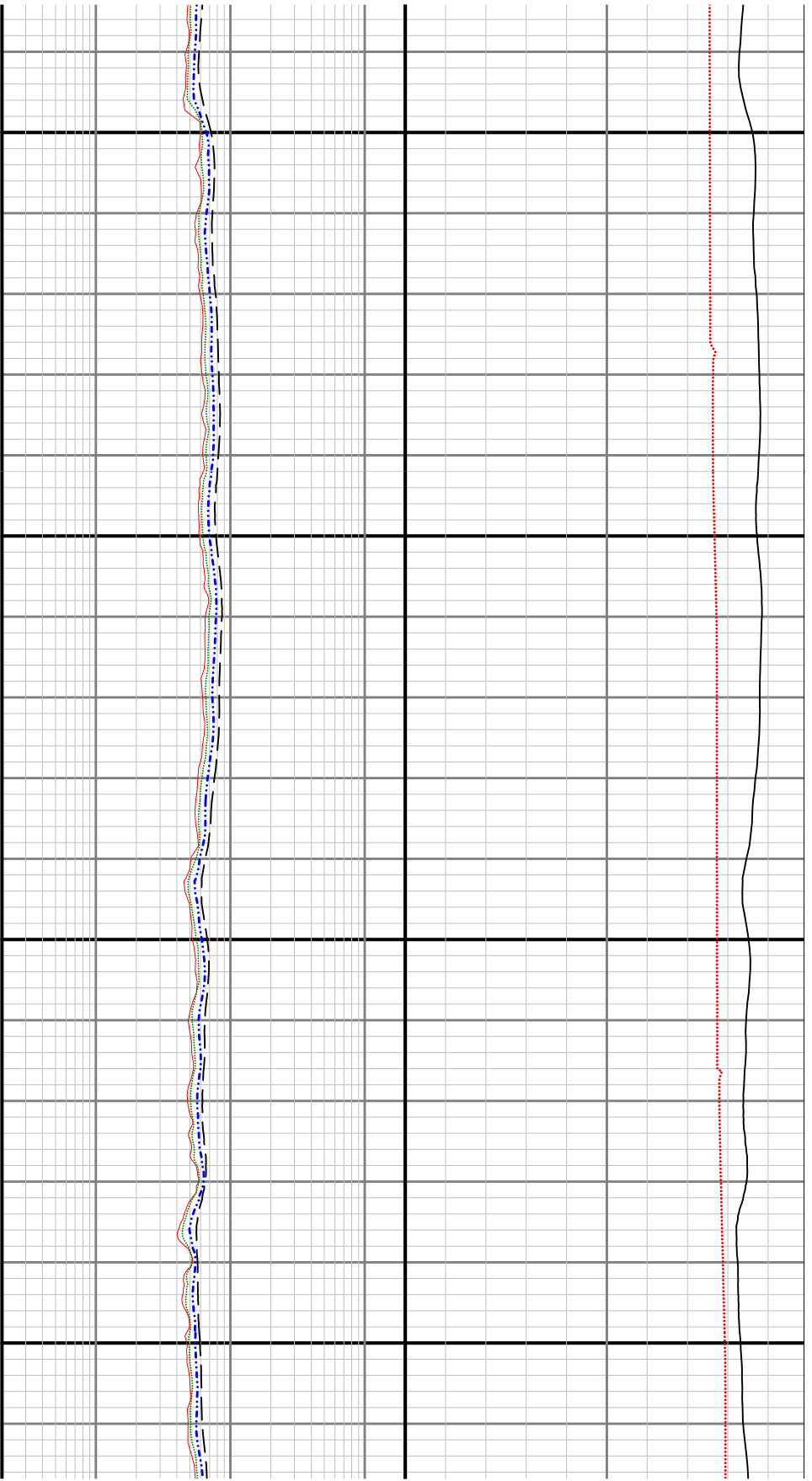


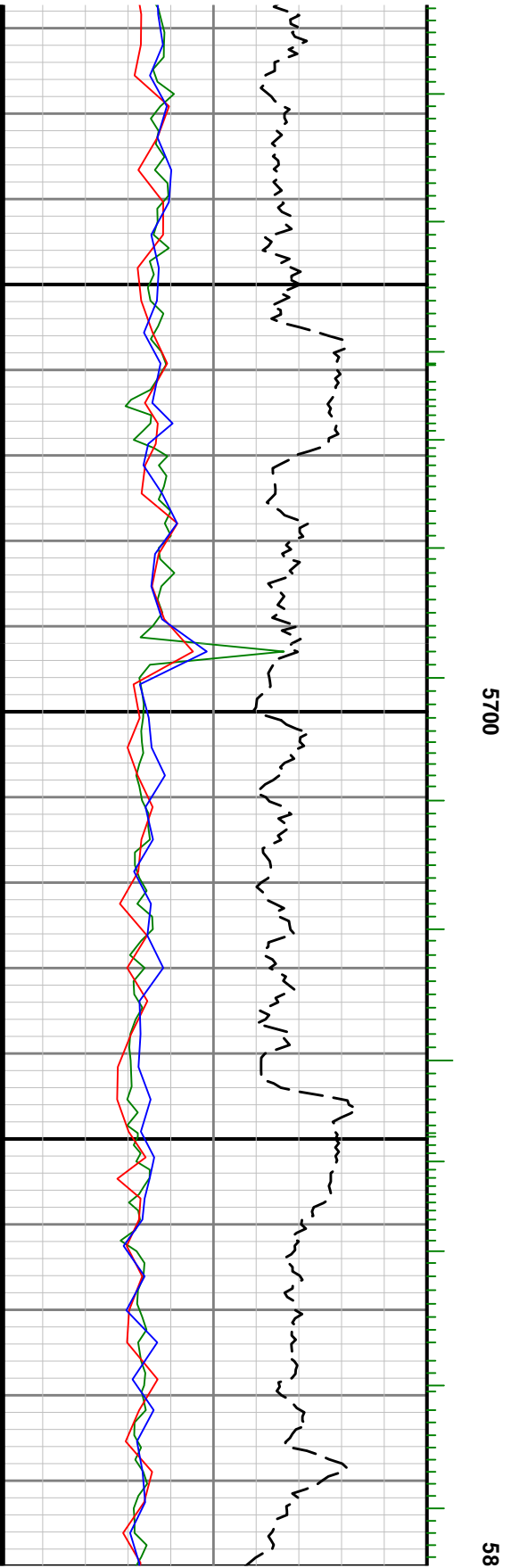
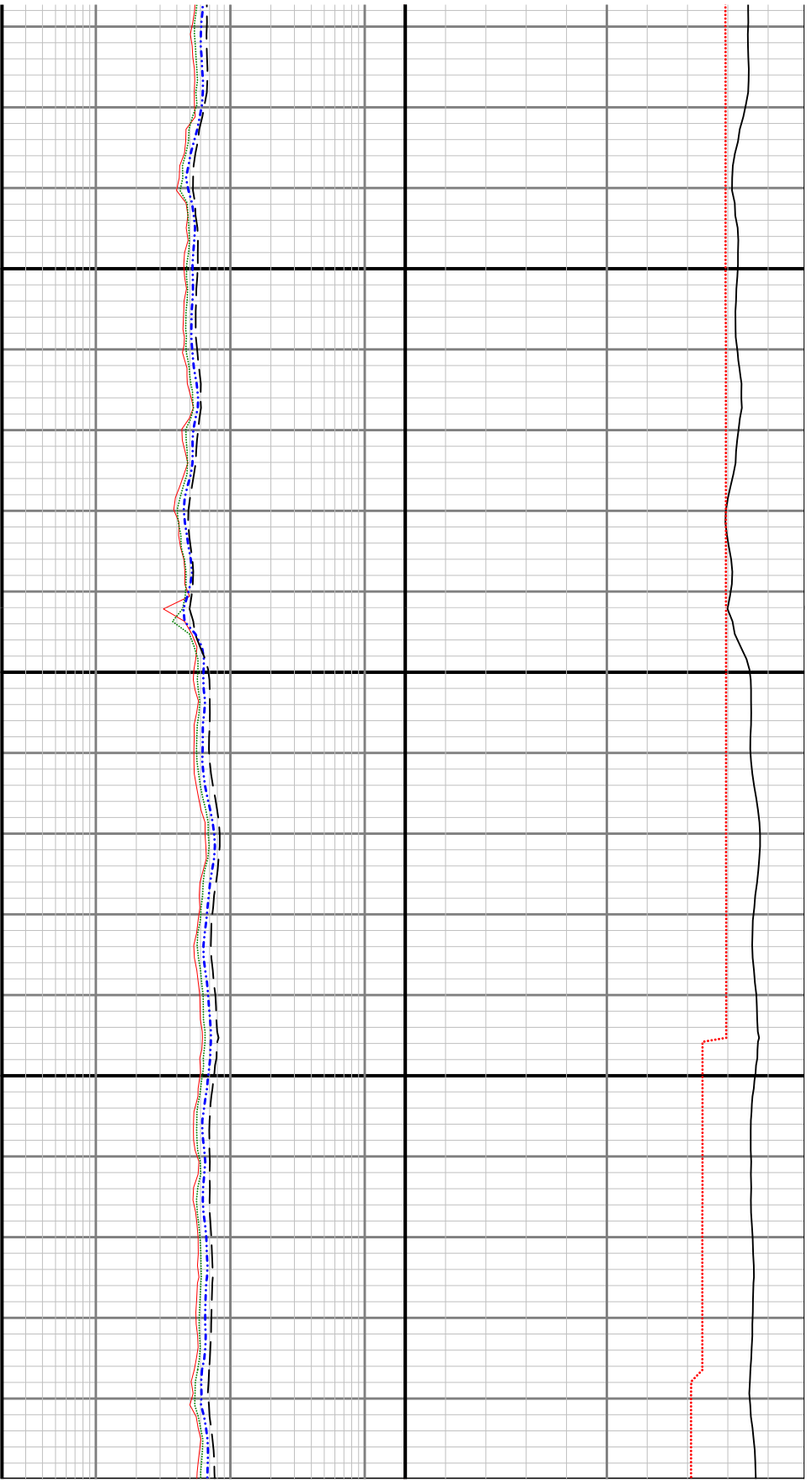


CACLM  
RPTHM

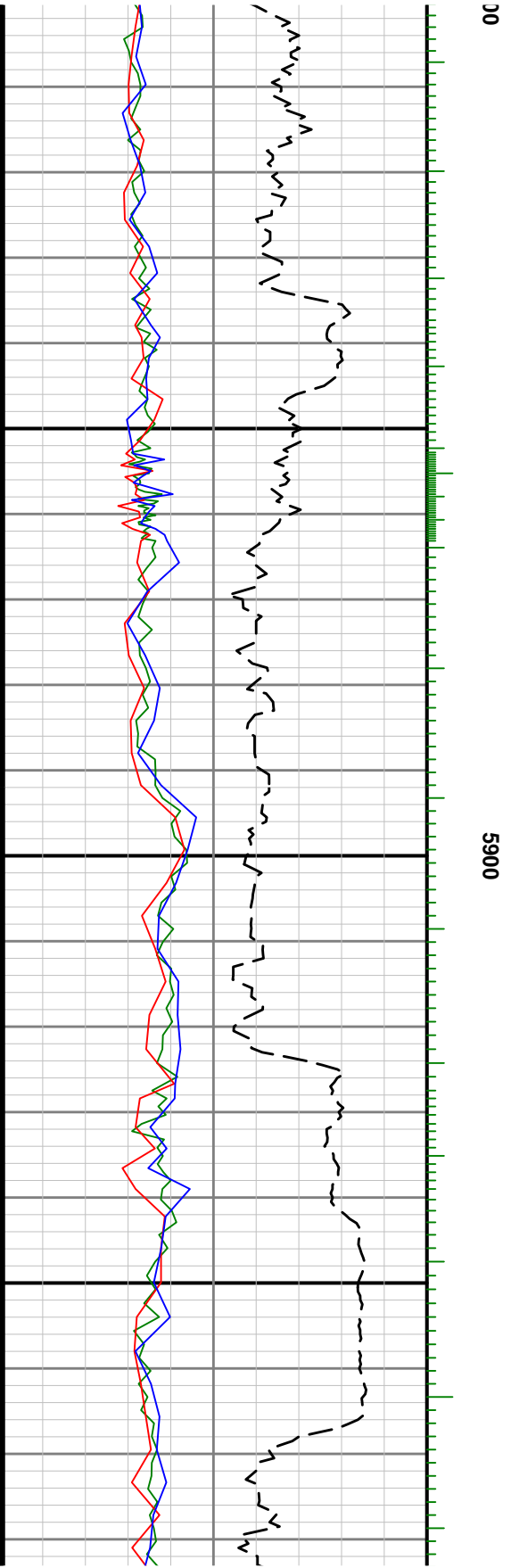


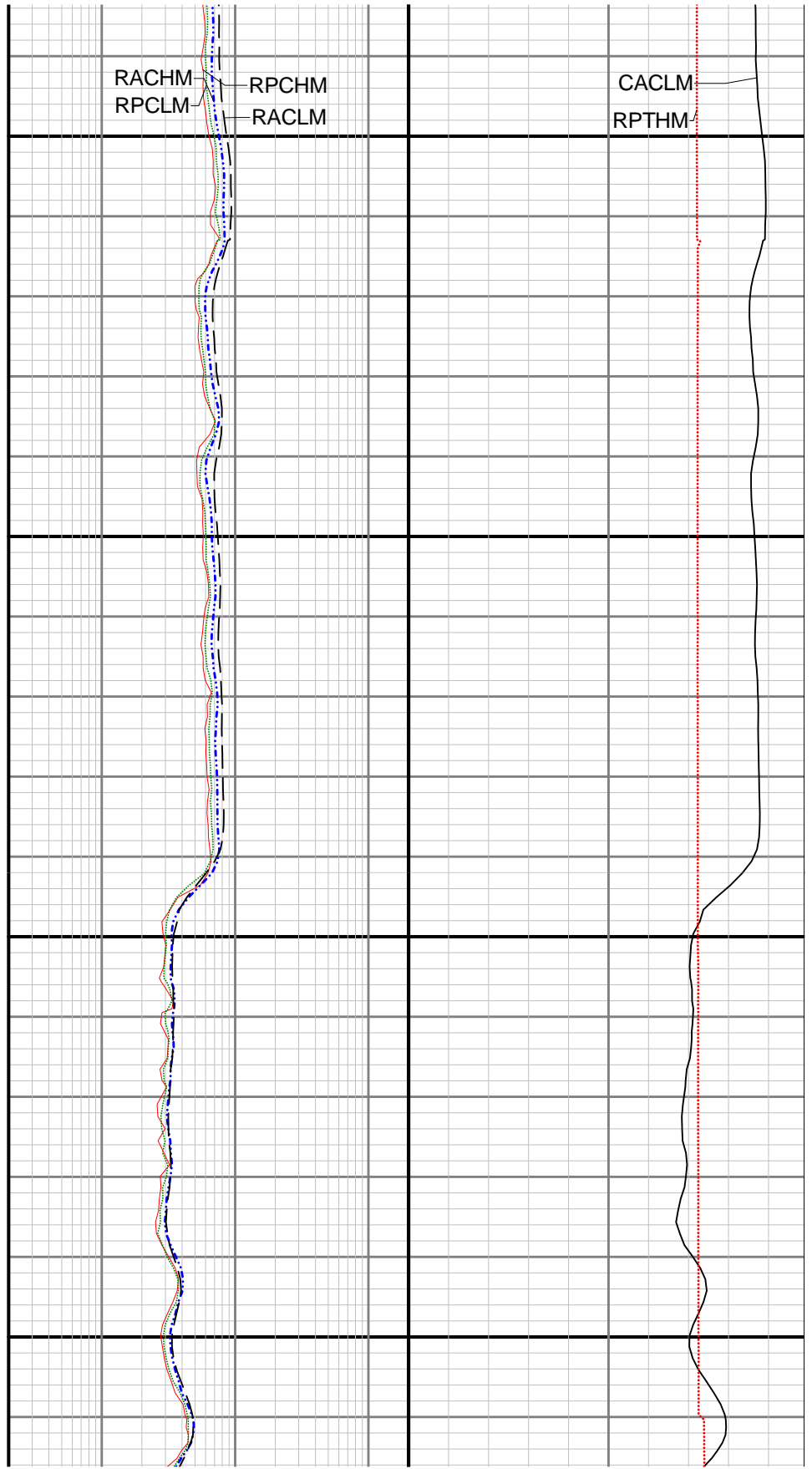
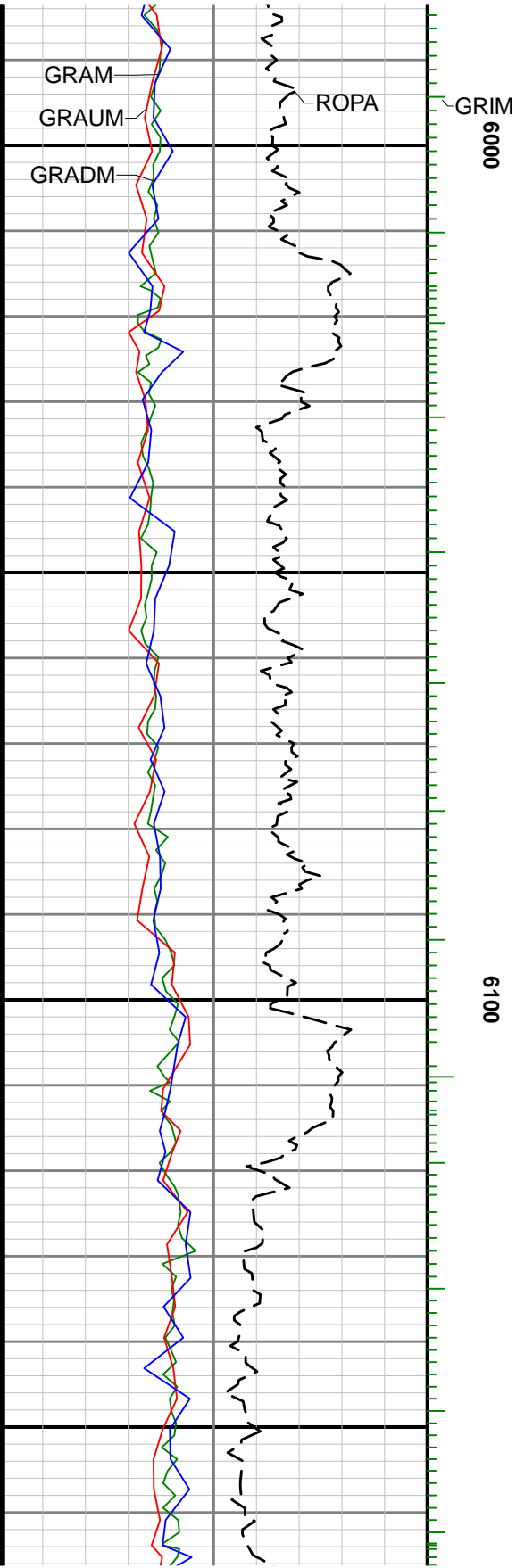


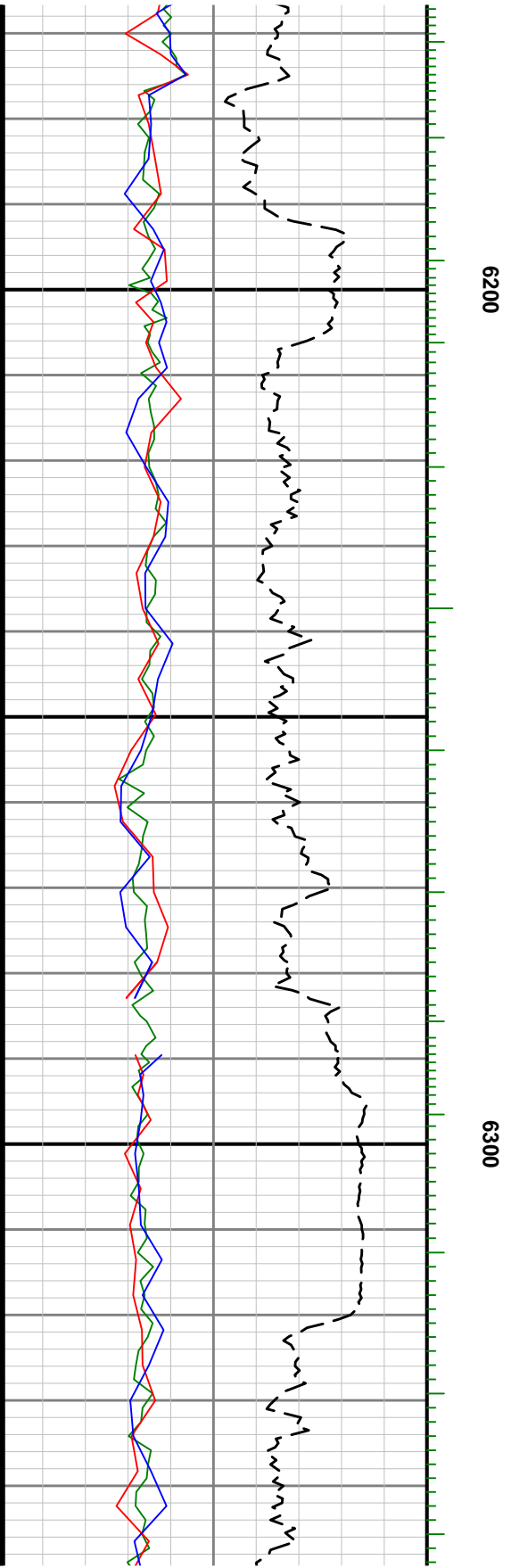
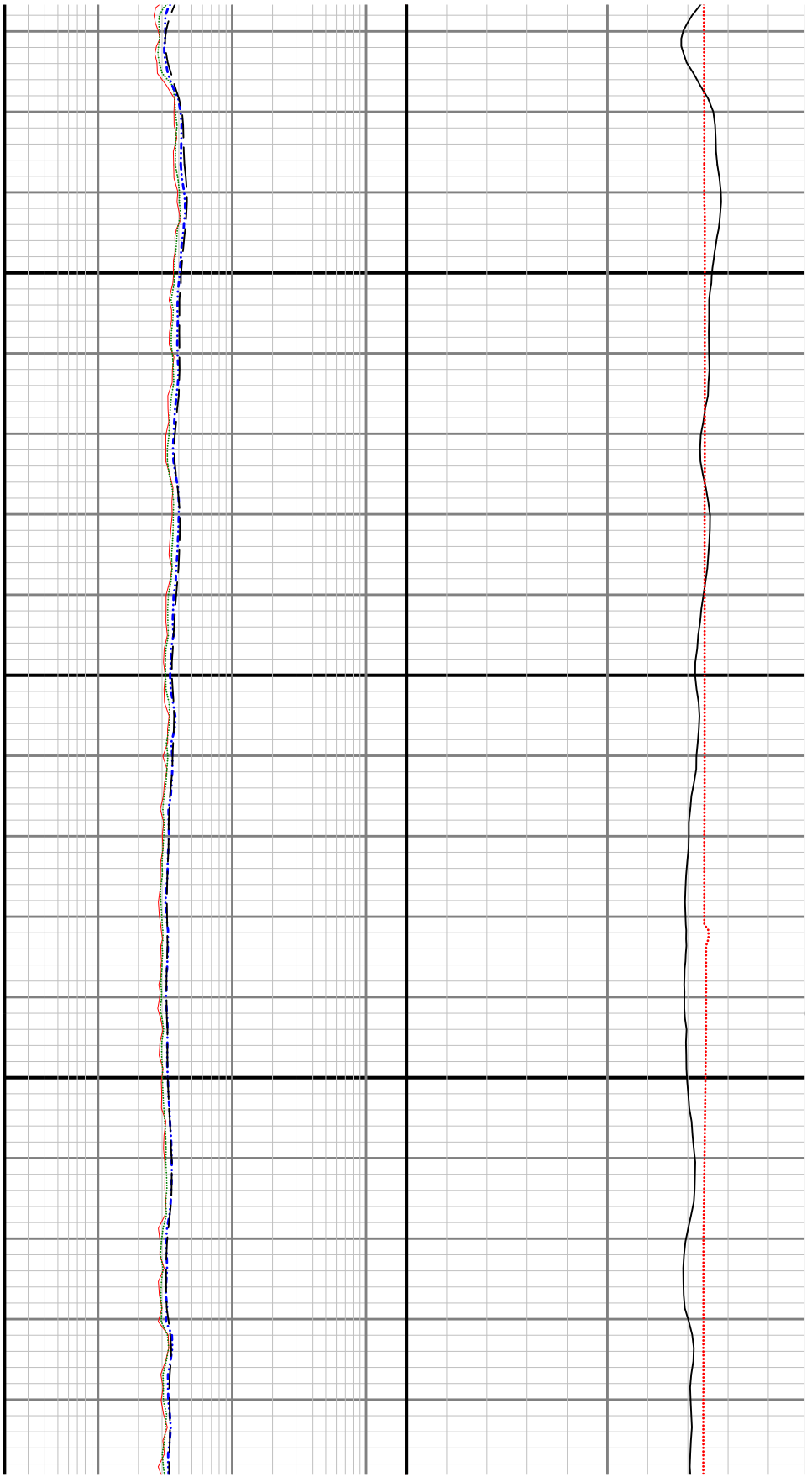


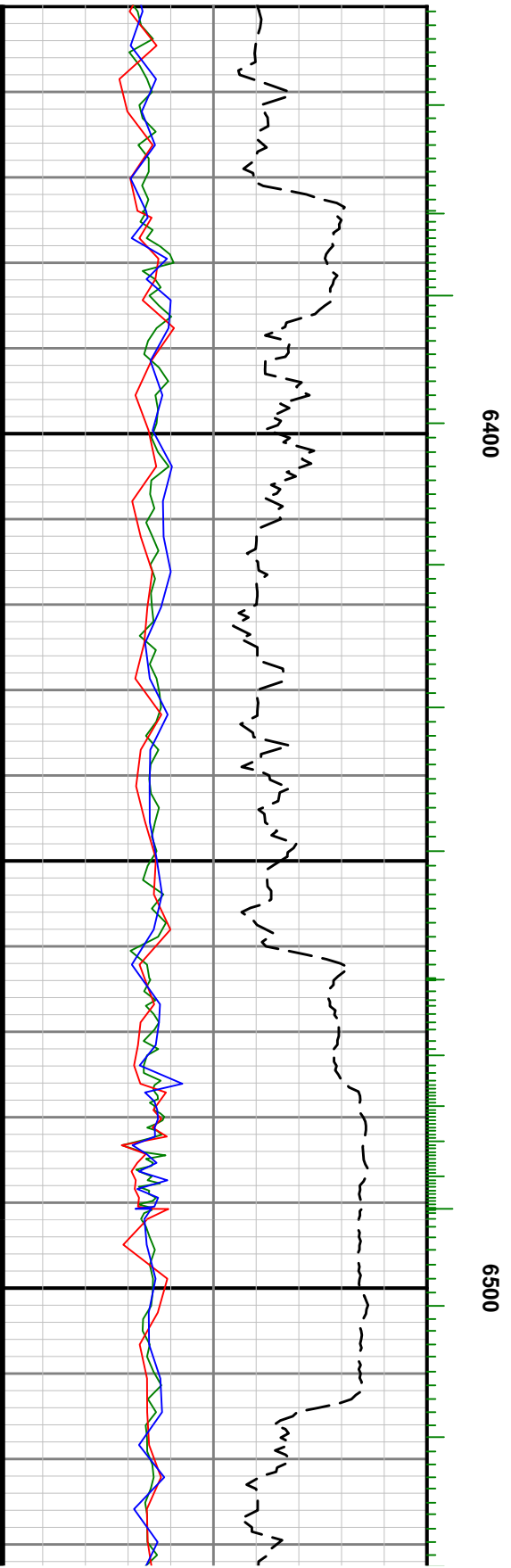
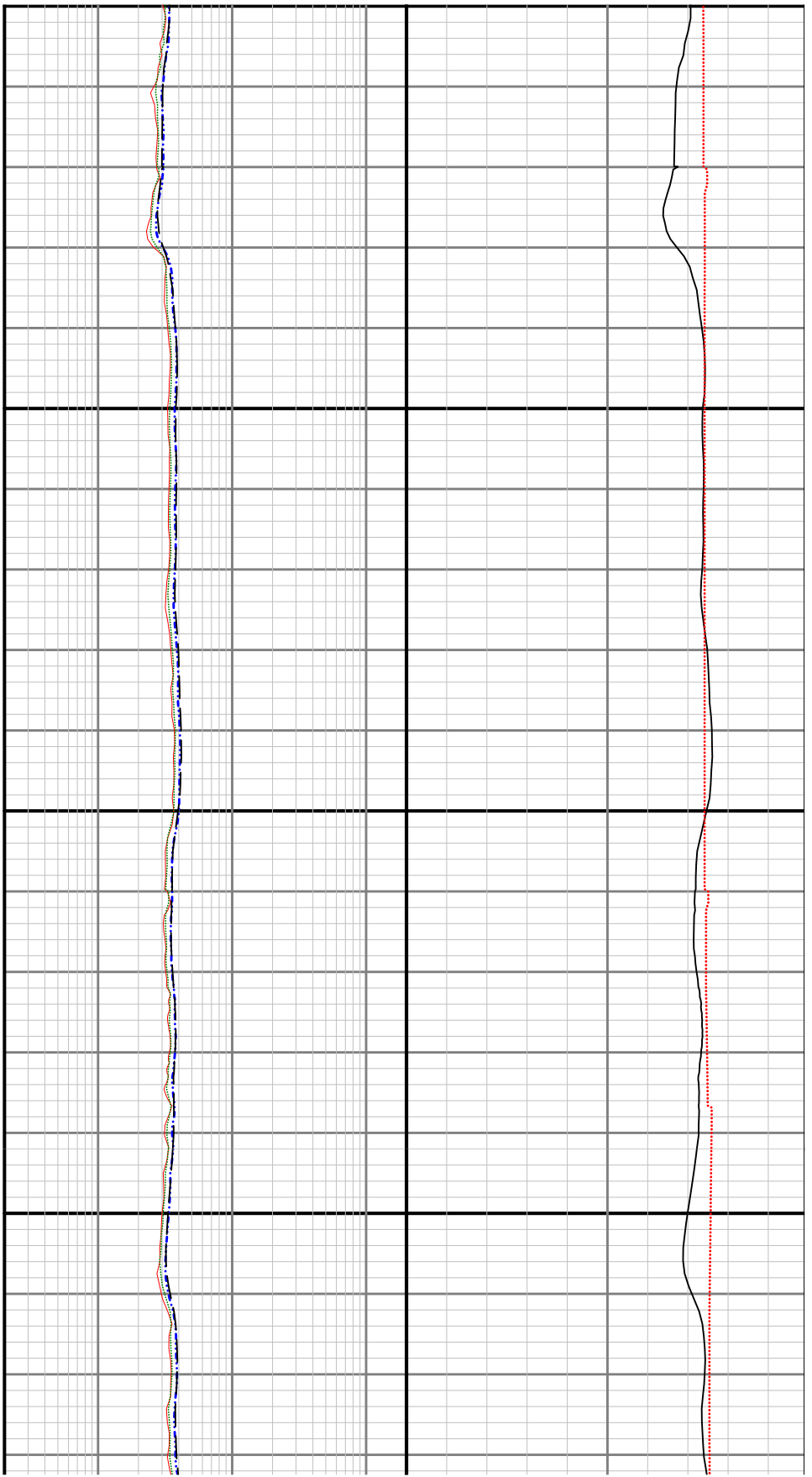


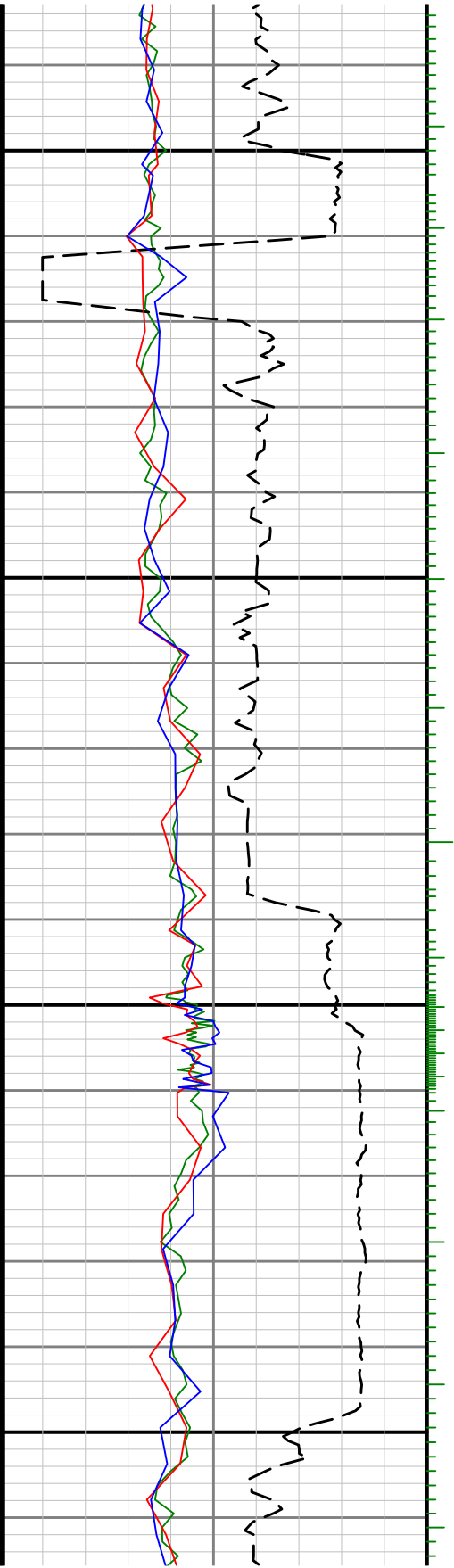






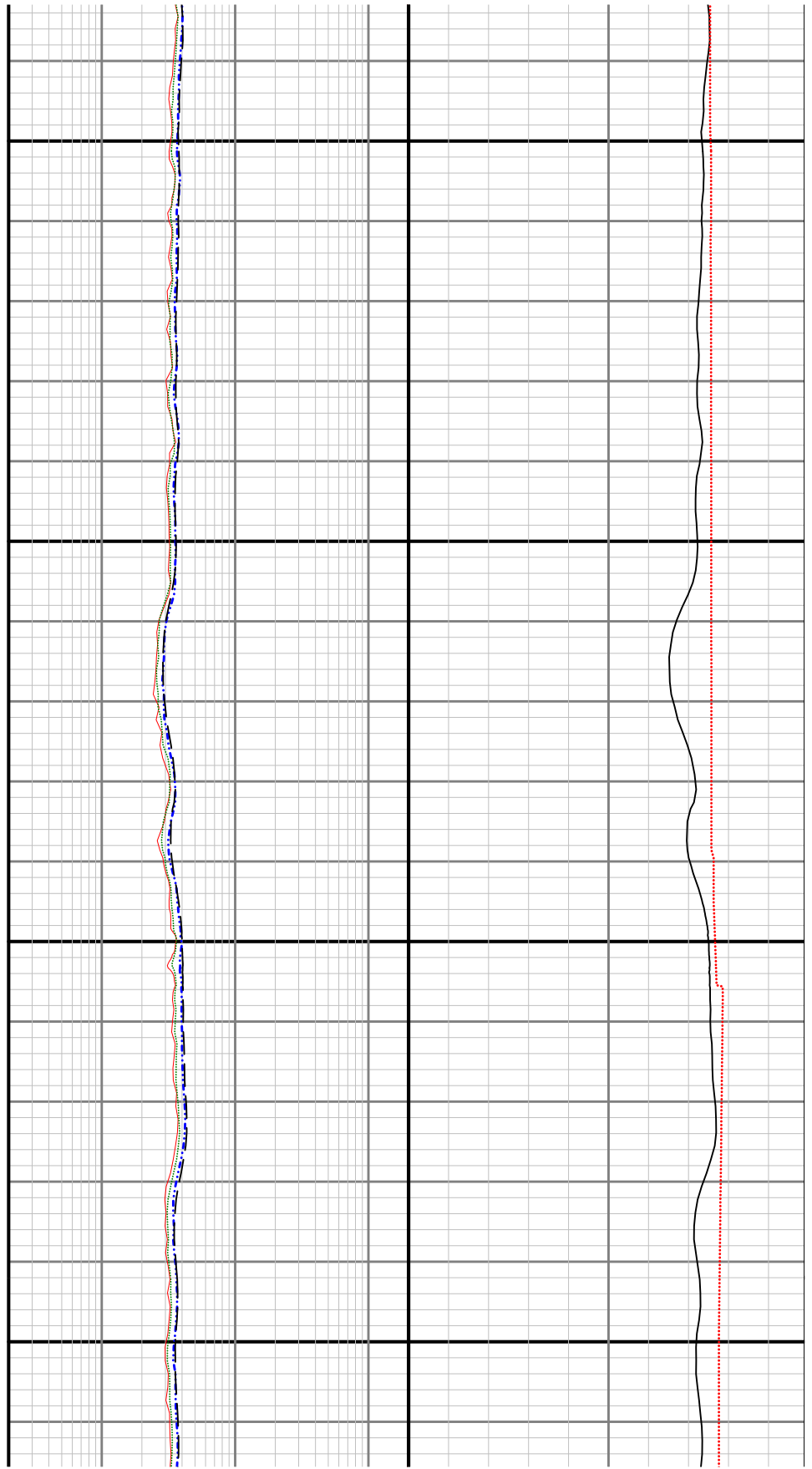


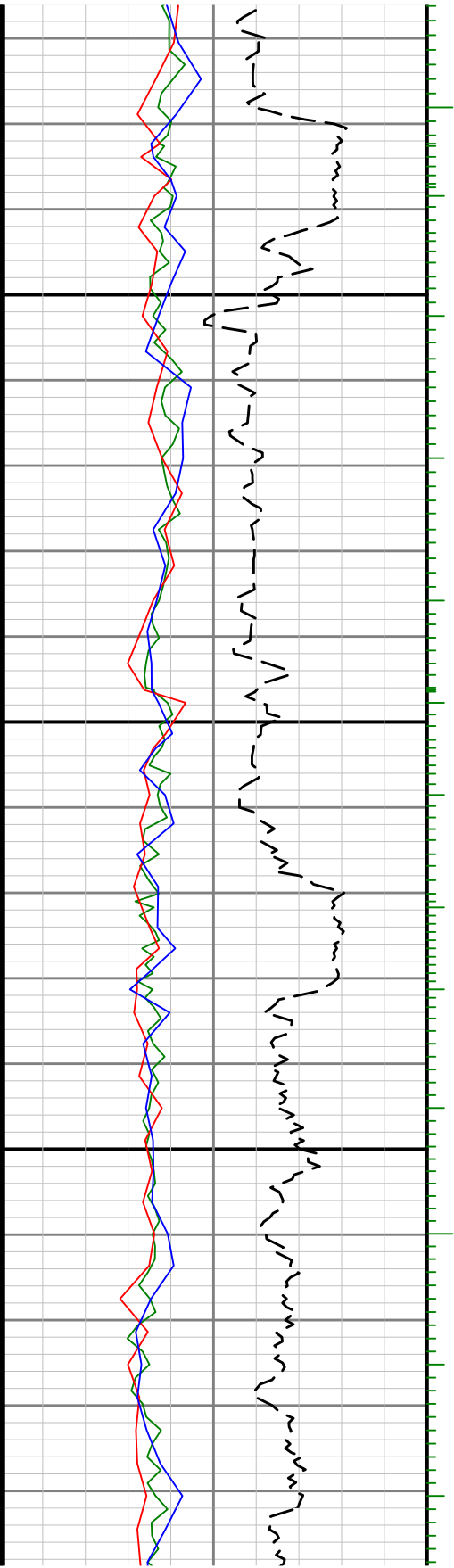




6700

6600

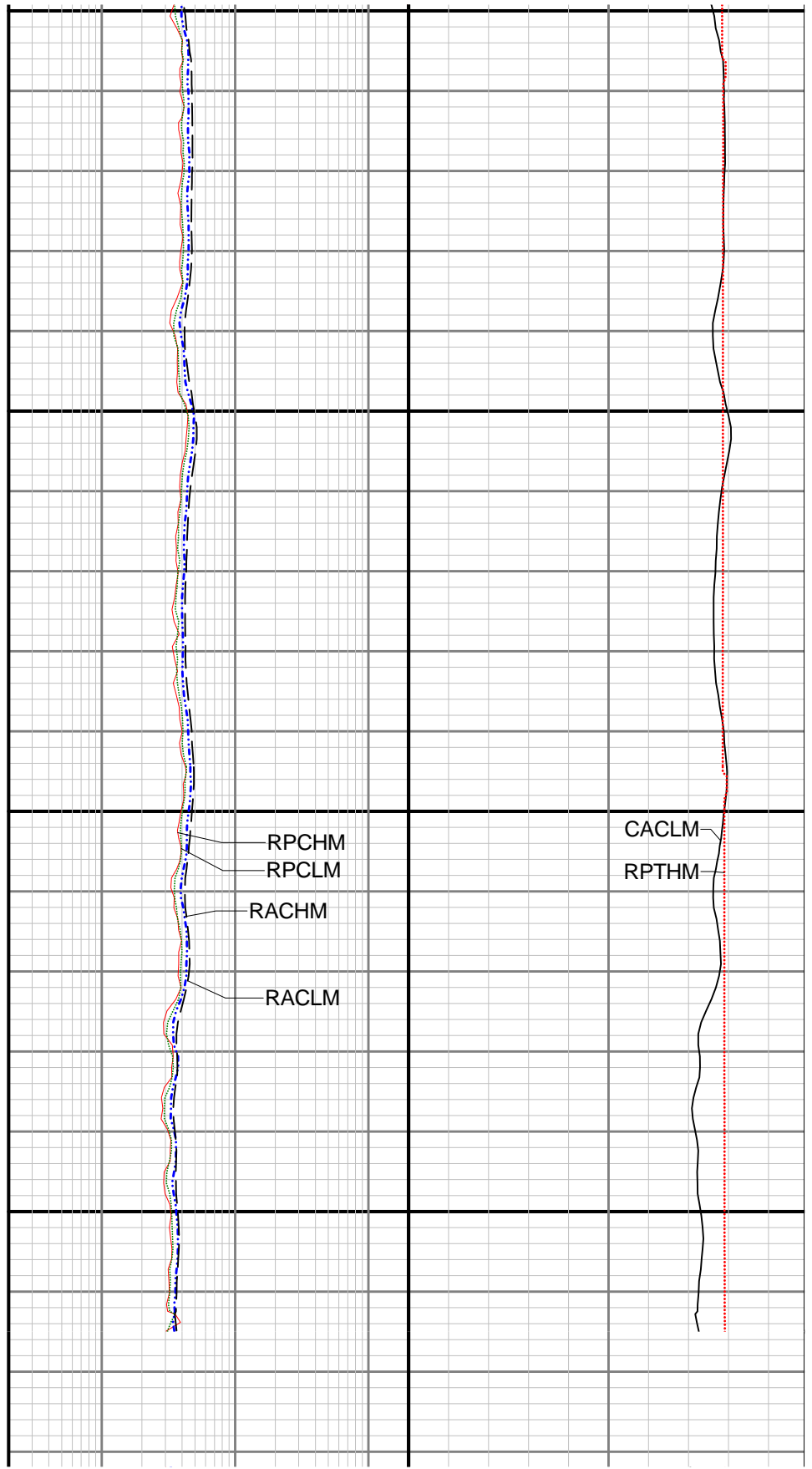
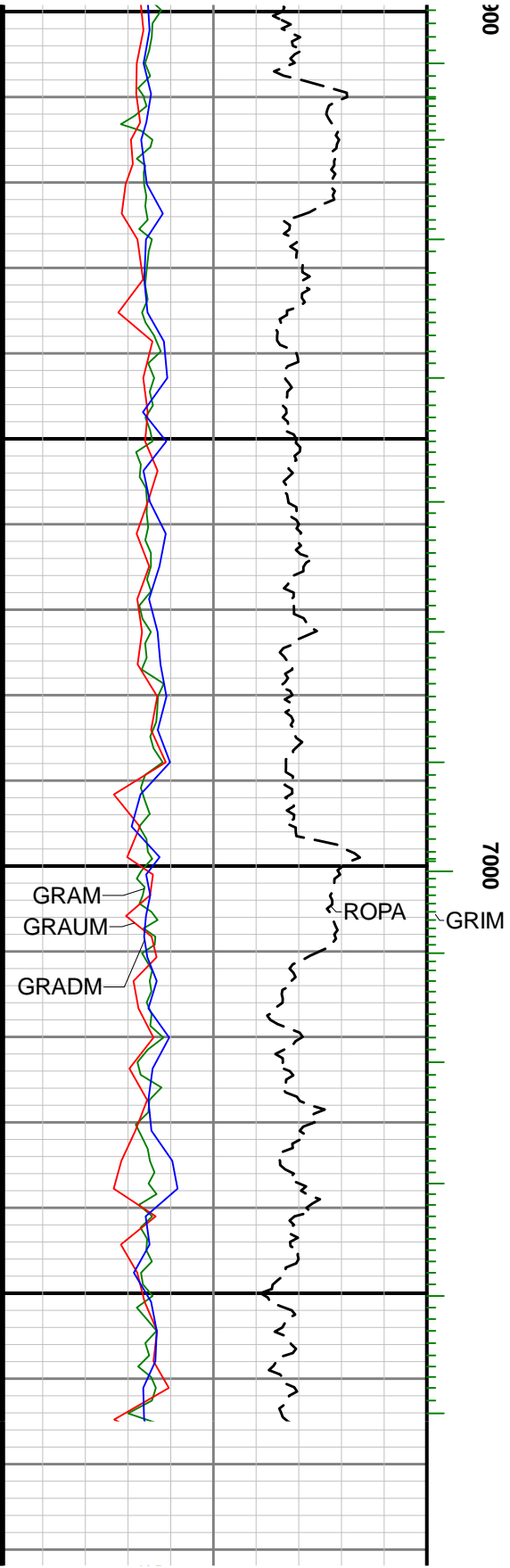





9

0089





[illegible]

<div></div>		LWD MEMORY LOG			
		Azmuthal Gamma Ray, Multiple Propagation Resistivity			
Scale:		Company: Anadarko			
1:240 MD		Well: COWBOY 21-1HZ			
Depth Reference:		Field: Weld County			
Driller's Depth		County: Weld		Country:	United States
		State: Colorado			
Status:		Surface Location:			Other Services:
Final Print		Latitude: 040° 07' 28.834" N			Wellbore Survey
API: 05123471060000		Longitude: 104° 53' 22.276" W			
Job ID: 109372441		SEC: 21	TWN: 2N	RGE: 67W	
Permanent Datum (P.D.): Mean Sea Level					Elevations:
Elevation: 0.00 ft Interval: 1892.00 ft - 15706.27 ft					Elev. KB: N/A
Log Measured From: Rig Floor					Elev. DF: 5067.00 ft
Above P.D. 5067.00 ft Created: 2018-09-19 11:13:16					Elev. GL: 5041.00 ft