

Inspection Photos

12/24/2018

Operator: NOBLE ENERGY INC - 100322

Location ID: 326752

Inspection Doc. Number: 682504339

Weld County, CO

Aaron Trujillo
NE Reclamation Specialist
COGCC



Photo 1: Photo taken from the location, facing east. Previous inspections required operator to remove risers/equipment from the location. Photo shows risers have not been removed.



Photo 2: Photo taken from the location, facing southeast. Previous inspections required operator to remove pipe/risers/equipment from the location. Photo shows pipe/risers/equipment have not been removed.



Photo 3: Photo taken from the location, facing southwest. Previous inspections required operator to remove risers/equipment from the location. Photo shows risers have not been removed.



Photo 4: Photo taken from the location, facing west. Previous inspections required operator to remove risers/equipment from the location. Photo shows risers have not been removed.



Photo 5: Photo taken from the location, facing west. Previous inspections required operator to remove risers/equipment from the location. Photo shows risers have not been removed.



Photo 6: Photo taken from where the access road turns north. Previous inspections required operator to perform reclamation of the access road. Photo shows operator appears to only have conducted reclamation on a portion of the access road.



Photo 7: Photo taken from the access road, facing north. Photo shows access road has not been reclaimed.



Photo 8: Photo taken from the access road, facing southeast. Photo shows access road has not been reclaimed. .



Photo 9: Photo taken from the access road, facing west towards the county road. Photo shows access road has not been reclaimed.



Photo 10: Historic aerial imagery (1999) seen on the left compared to current available aerial imagery (2015). Yellow circle indicates approximate areas where pipe equipment (seen in photos 3-5) remain.



Photo 11: May 1985 aerial imagery. Star indicates location of the well. Well was spud 9/21/1987. Photo shows location and access road pre O&G disturbance. Photo shows access road was not been pre-existing and is subject to 1004 reclamation rules.

Inspection Photos
Operator: NOBLE ENERGY INC - 100322
Location ID: 326752

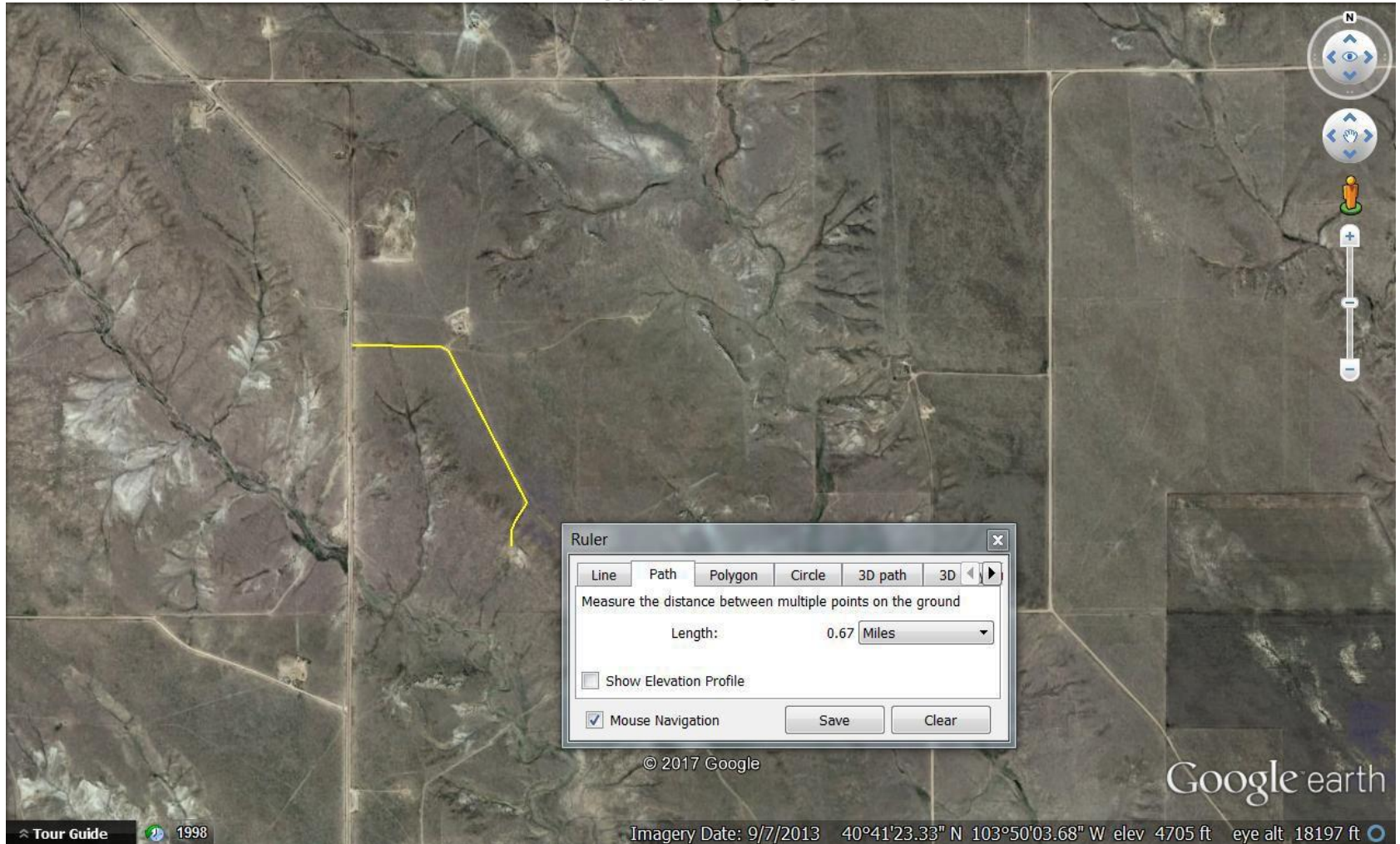


Photo 12: Most current available aerial imagery (2013). Photo shows ~0.6 miles of access road that requires reclamation