

October 16, 2018

Ms. Kate Graves  
Senior HSE Representative  
Kerr-McGee Oil & Gas Onshore LP  
501 N Division Blvd  
Platteville, Colorado 80651

**RE: Form 4 Sundry Notice – Final Reclamation  
Kerr-McGee Oil & Gas Onshore LP (Operator: 47120)  
KITELEY 31-27, Location ID: 336168  
SENW S27-T3N-R68W  
Weld County, Colorado**

Dear Ms. Graves :

LT Environmental, Inc. (LTE) was contracted by Kerr-McGee Oil & Gas Onshore LP (Kerr-McGee) to complete final reclamation inspections at a plugged and abandoned (P&A) well site located in Weld County, Colorado. The reclamation inspection was conducted in accordance with Colorado Oil and Gas Conservation Commission (COGCC) Rule 1004.

The former KITELEY 31-27 well (API: 05-123-29153) was P&Aed on May 3, 2017 according to Form 6 Document Number 401289578; the former KITELEY 31-27 well is located on an active pad (Location ID: 336168). On August 1, 2018, LTE conducted a final reclamation inspection and determined that the site is in compliance with final reclamation requirements per COGCC Rule 1004. The associated tank battery is located on the well pad and remains in use servicing Kerr-McGee producing wells: API: 05-123-25617, API: 05-123-26994, API: 05-123-29154, and API: 05-123-29155. All disturbed areas have been compacted and stabilized with roadbase to minimize erosion. LTE personnel located the P&A wellhead location using a hand-held Trimble (R1) Global Positioning System (GPS) unit and latitude and longitude coordinates obtained from the COGCC online database. A general site location map is included as Figure 1; and the Site Map displaying the location of the reclaimed site on a 2018 aerial image is included as Figure 2. Photographs of the P&A site were taken facing each cardinal direction from the P&A wellhead location. The photographic log is included as Attachment 1.

Based on the successful reclamation of the KITELEY 31-27 site, a Form 4 Sundry Notice requesting final reclamation status has been prepared for submittal to the COGCC. This letter will be included as an attachment to the electronic Form 4 submittal.

If you have any questions or need additional information, please do not hesitate to contact us.

Sincerely,



LT ENVIRONMENTAL, INC.

A handwritten signature in blue ink, appearing to read 'Stacey Baum'.

Stacey Baum  
Staff Biologist

A handwritten signature in blue ink, appearing to read 'Brian Sulzberger'.

Brian Sulzberger, P.E.  
Senior Engineer

Attachments:

Figure 1 Site Location Map

Figure 2 Site Map

Attachment 1 Photographic Log

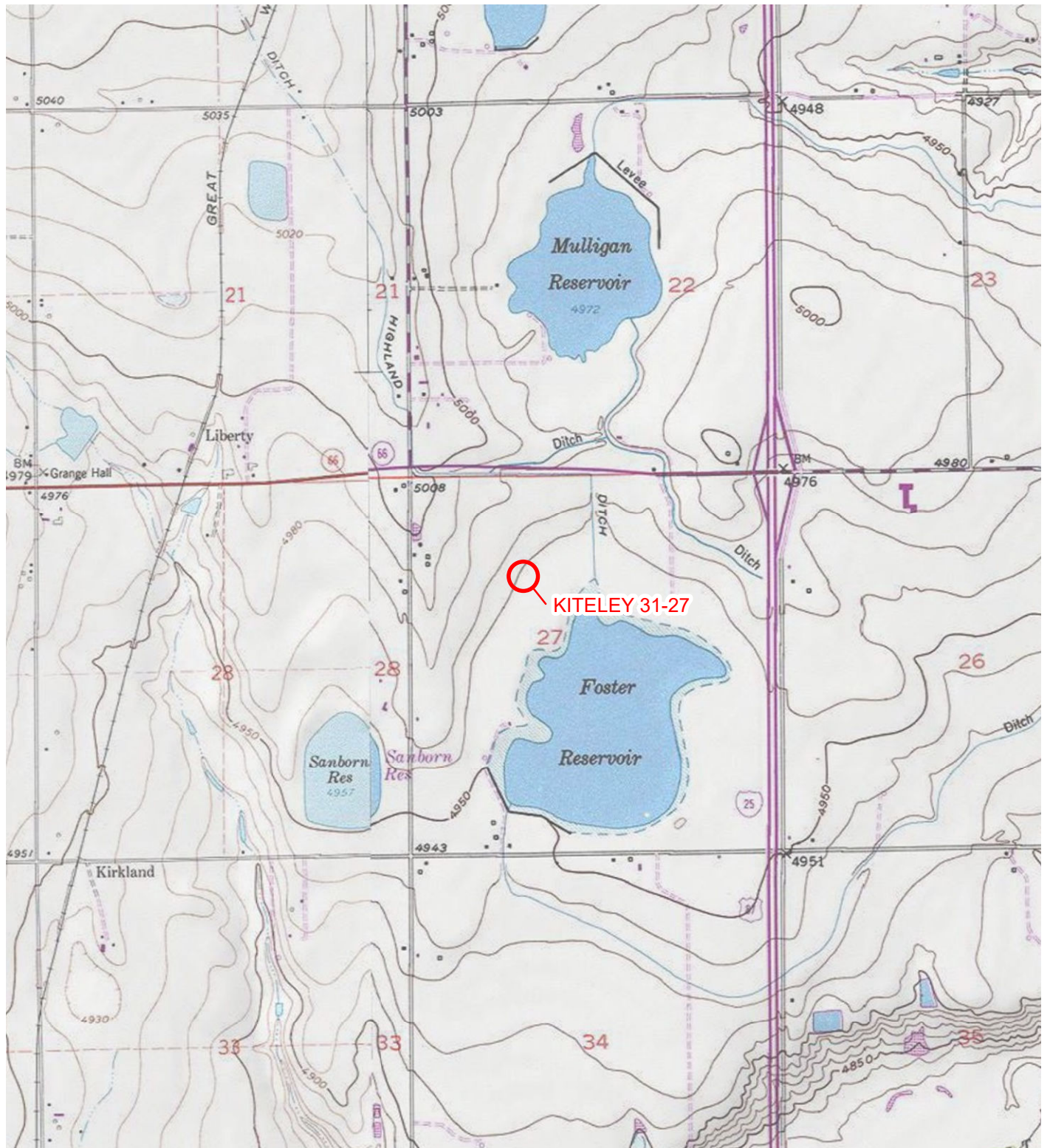
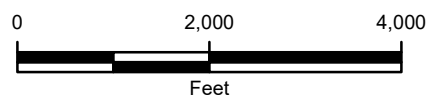


IMAGE COURTESY OF ESRI/USGS

# LEGEND

 SITE LOCATION



**FIGURE 1**  
**SITE LOCATION MAP**  
**KITELEY 31-27**  
**SENW SEC 27-T3N-R68W**  
**WELD COUNTY, COLORADO**  
**KERR-MCGEE OIL & GAS ONSHORE LP**



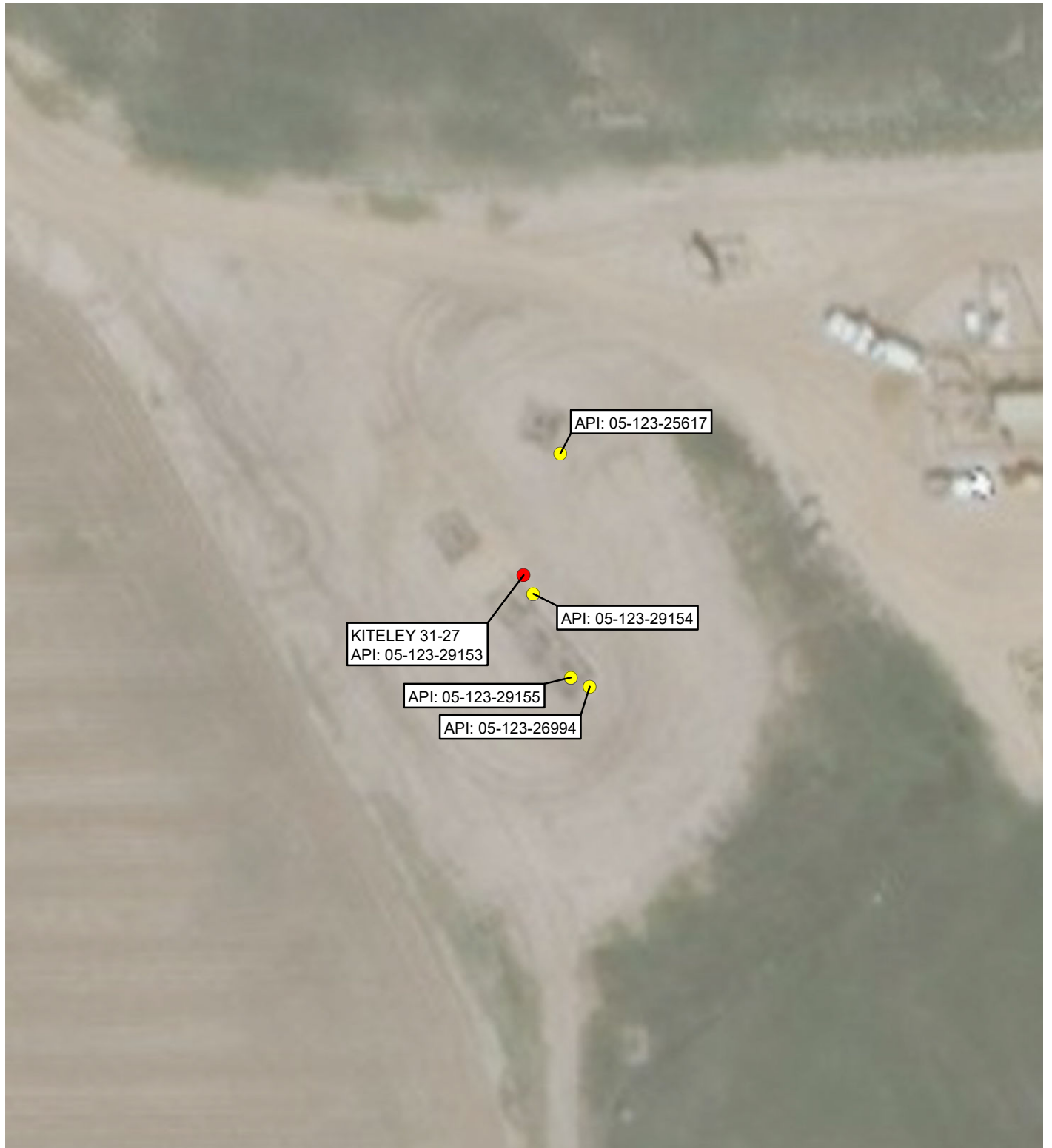


IMAGE COURTESY OF ESRI

## LEGEND

- PLUGGED AND ABANDONED WELL (KITELEY 31-27)
- WELLHEAD

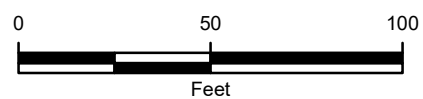


FIGURE 2  
SITE MAP  
KITELEY 31-27  
SEW SEC 27-T3N-R68W  
WELD COUNTY, COLORADO  
KERR-MCGEE OIL & GAS ONSHORE LP





## PHOTOGRAPHIC LOG



**Photograph 1:** View facing north as required in Colorado Oil and Gas Conservation Commission (COGCC) Rule 1004.



**Photograph 2:** View facing east as required in COGCC Rule 1004.



## PHOTOGRAPHIC LOG



**Photograph 1:** View facing north as required in Colorado Oil and Gas Conservation Commission (COGCC) Rule 1004.



**Photograph 2:** View facing east as required in COGCC Rule 1004.

## PHOTOGRAPHIC LOG



**Photograph 5:** Overall site view per COGCC Rule 1004.