

October 15, 2018

Ms. Kate Graves  
Senior HSE Representative  
Kerr-McGee Oil & Gas Onshore LP  
501 N Division Blvd  
Platteville, Colorado 80651

**RE: Form 4 Sundry Notice – Final Reclamation  
Kerr-McGee Oil & Gas Onshore LP (Operator: 47120)  
HSR-FEDERAL 13-36A, Location ID: 336318  
SWSW S36-T3N-R66W  
Weld County, Colorado**

Dear Ms. Graves:

LT Environmental, Inc. (LTE) was contracted by Kerr-McGee Oil & Gas Onshore LP (Kerr-McGee) to complete final reclamation inspections at plugged and abandoned (P&A) well sites located in Weld County, CO. The reclamation inspections were conducted in accordance with Colorado Oil and Gas Conservation Commission (COGCC) Rule 1004.

The former HSR-FEDERAL 13-36A well (API: 05-123-14431) was P&A on September 17, 2013 according to Form 6 Document Number 400482863; the former HSR-FEDERAL 13-36A well is located on an active pad (Location ID: 336318). On October 23, 2018, LTE conducted a final reclamation inspection and determined that the location is in compliance with final reclamation requirements per COGCC Rule 1004. The associated active tank battery is located 0.20 miles northeast of the well pad. The former HSR-FEDERAL 13-36A well pad remains in use servicing Kerr-McGee producing wells: API: 05-123-25960, API: 05-123-36895 and API: 05-123-36896. All disturbed areas have been compacted and stabilized with roadbase to minimize erosion. LTE personnel located the P&A wellhead location using a handheld Trimble (R1) Global Positioning System (GPS) unit and latitude and longitude coordinates obtained from the COGCC online database. A general site location map is included as Figure 1; and the Site Map displaying the location of the reclaimed site on a 2018 aerial imagery is included as Figure 2. Photographs of the P&A location were taken facing each cardinal direction from the P&A wellhead location. The photographic log is included as Attachment 1.

Based on the successful reclamation of the HSR-FEDERAL 13-36A site, a Form 4 Sundry Notice requesting final reclamation status has been prepared for the submittal to the COGCC. This letter will be included as an attachment to the electronic Form 4 submittal.

If you have any questions or need additional information, please do not hesitate to contact us.



Sincerely,

LT ENVIRONMENTAL, INC.

A handwritten signature in blue ink, appearing to read 'Stacey Baum'.

Stacey Baum  
Staff Biologist

A handwritten signature in blue ink, appearing to read 'Brian Sulzberger'.

Brian Sulzberger, P.E.  
Senior Engineer

Attachments:

Figure 1 Site Location Map

Figure 2 Site Map

Attachment 1 Photographic Log

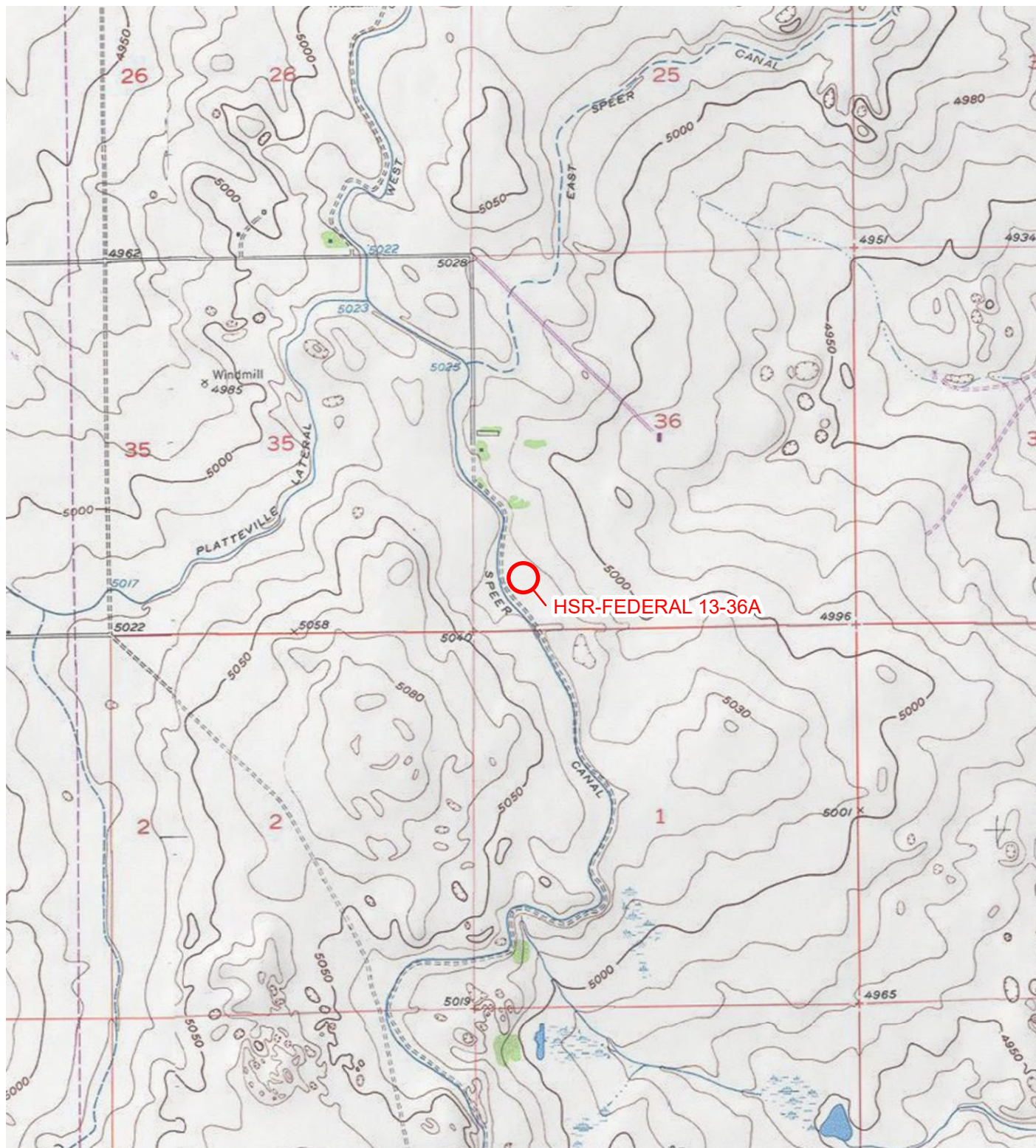
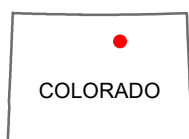
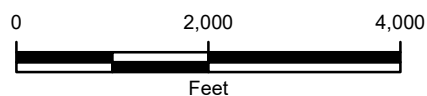


IMAGE COURTESY OF ESRI/USGS

# LEGEND

 SITE LOCATION



**FIGURE 1**  
**SITE LOCATION MAP**  
**HSR-FEDERAL 13-36A**  
**SWSW SEC 36-T3N-R66W**  
**WELD COUNTY, COLORADO**  
**KERR-MCGEE OIL & GAS ONSHORE LP**





IMAGE COURTESY OF ESRI

## LEGEND

- PLUGGED AND ABANDONED WELL (HSR-FEDERAL 13-36A)
- WELLHEAD

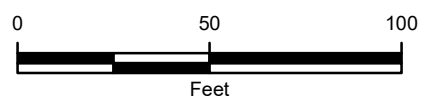


FIGURE 2  
SITE MAP  
HSR-FEDERAL 13-36A  
SWSW SEC 36-T3N-R66W  
WELD COUNTY, COLORADO  
KERR-MCGEE OIL & GAS ONSHORE LP





## PHOTOGRAPHIC LOG



**Photograph 1:** View facing north as required in Colorado Oil and Gas Conservation Commission (COGCC) Rule 1004.



**Photograph 2:** View facing east as required in COGCC Rule 1004.



## PHOTOGRAPHIC LOG



**Photograph 3:** View facing south as required in COGCC Rule 1004.



**Photograph 4:** View facing west as required in COGCC Rule 1004.

## PHOTOGRAPHIC LOG



**Photograph 5:** Overall site view per COGCC Rule 1004.