

October 12, 2018

Ms. Kate Graves
Senior HSE Representative
Kerr-McGee Oil & Gas Onshore LP
501 N Division Blvd
Platteville, Colorado 80651

**RE: Form 4 Sundry Notice – Final Reclamation
Kerr-McGee Oil & Gas Onshore LP (Operator: 47120)
HIGHWAY 160 41-2, Location ID: 317936
SWNE S02-T1N-R66W
Weld County, Colorado**

Dear Ms. Graves :

LT Environmental, Inc. (LTE) was contracted by Kerr-McGee Oil & Gas Onshore LP (Kerr-McGee) to complete final reclamation inspections at a plugged and abandoned (P&A) well site located in Weld County, Colorado. The reclamation inspection was conducted in accordance with Colorado Oil and Gas Conservation Commission (COGCC) Rule 1004.

The former HIGHWAY 160 41-2 well (API: 05-123-31683) was P&Aed on May 29, 2018, according to Form 6 Document Number 401684011; the former HIGHWAY 160 41-2 well is located on an active pad (Location ID: 317936). On September 19, 2018, LTE conducted a final reclamation inspection and determined that the site is in compliance with final reclamation requirements per COGCC Rule 1004. The associated tank battery is located on the well pad and remains in use servicing Kerr-McGee producing wells: API: 05-123-31693 and API: 05-123-31695. All disturbed areas have been compacted and stabilized with roadbase to minimize erosion. LTE personnel located the P&A wellhead location using a hand-held Trimble (R1) Global Positioning System (GPS) unit and latitude and longitude coordinates obtained from the COGCC online database. A general site location map is included as Figure 1; and the Site Map displaying the location of the reclaimed site on a 2018 aerial image is included as Figure 2. Photographs of the P&A site were taken facing each cardinal direction from the P&A wellhead location. The photographic log is included as Attachment 1.

Based on the successful reclamation of the HIGHWAY 160 41-2 site, a Form 4 Sundry Notice requesting final reclamation status has been prepared for submittal to the COGCC. This letter will be included as an attachment to the electronic Form 4 submittal.

If you have any questions or need additional information, please do not hesitate to contact us.

Sincerely,



LT ENVIRONMENTAL, INC.

A handwritten signature in blue ink, appearing to read 'Stacey Baum'.

Stacey Baum
Staff Biologist

A handwritten signature in blue ink, appearing to read 'Brian Sulzberger'.

Brian Sulzberger, P.E.
Senior Engineer

Attachments:

- Figure 1 Site Location Map
- Figure 2 Site Map
- Attachment 1 Photographic Log

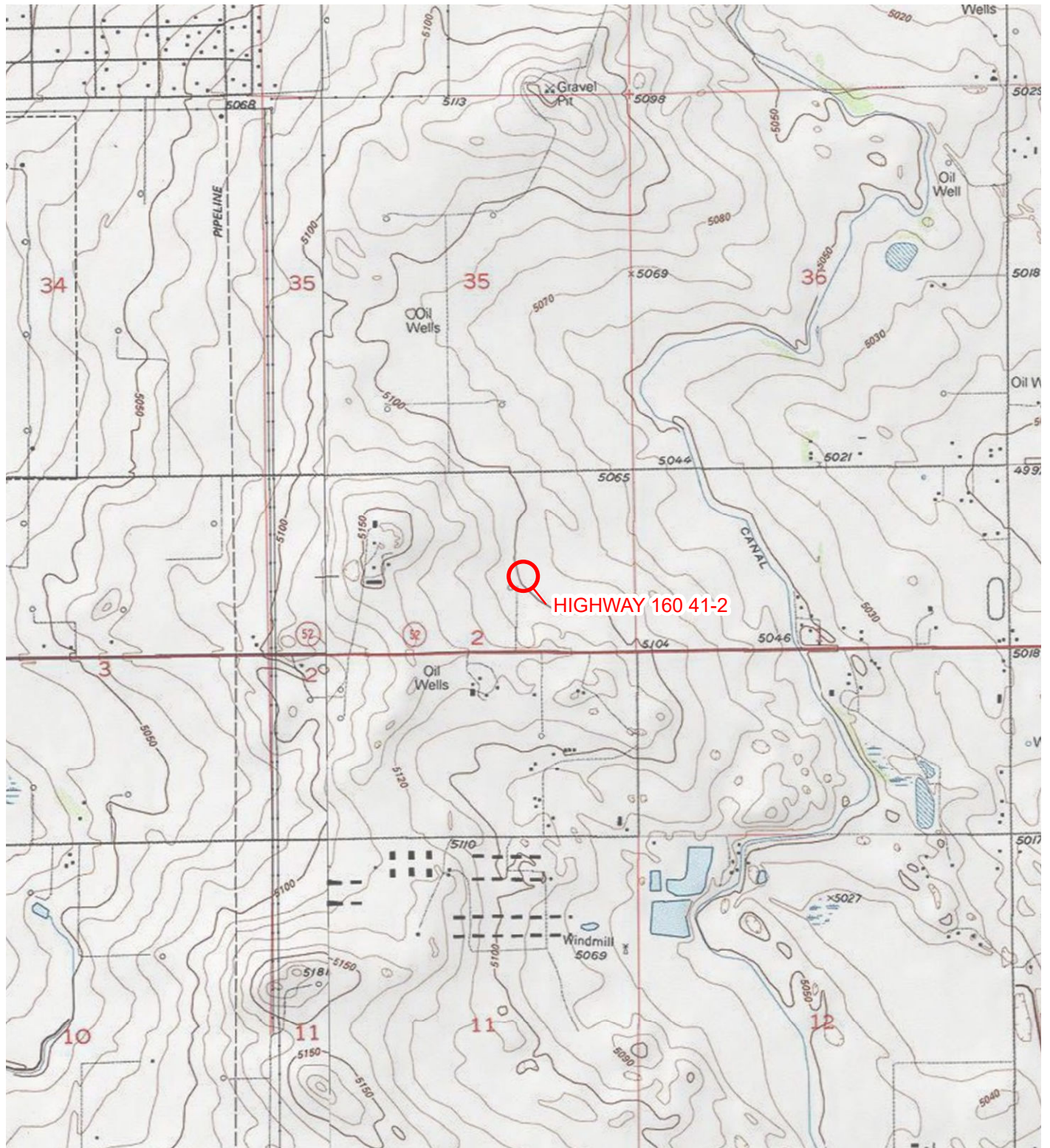


IMAGE COURTESY OF ESRI/USGS

LEGEND

○ SITE LOCATION

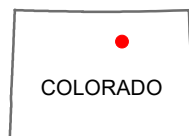
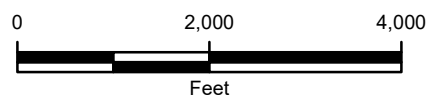


FIGURE 1
SITE LOCATION MAP
HIGHWAY 160 41-2
SWNE SEC 2-T1N-R66W
WELD COUNTY, COLORADO
KERR-MCGEE OIL & GAS ONSHORE LP





IMAGE COURTESY OF ESRI

LEGEND

- PLUGGED AND ABANDONED WELL (HIGHWAY 160 41-2)
- WELLHEAD

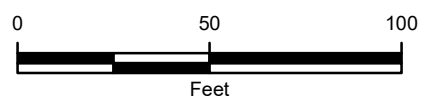


FIGURE 2
SITE MAP
HIGHWAY 160 41-2
SWNE SEC 2-T1N-R66W
WELD COUNTY, COLORADO
KERR-MCGEE OIL & GAS ONSHORE LP



PHOTOGRAPHIC LOG



Photograph 1: View facing north as required in Colorado Oil and Gas Conservation Commission (COGCC) Rule 1004.



Photograph 2: View facing east as required in COGCC Rule 1004.

PHOTOGRAPHIC LOG



Photograph 3: View facing south as required in COGCC Rule 1004.



Photograph 4: View facing west as required in COGCC Rule 1004.

PHOTOGRAPHIC LOG



Photograph 5: Overall site view per COGCC Rule 1004.