

- NPR 11B-4
- NPR 11A-4
- NPR 11D-4
- NPR 13C-5
- NPR 21A-5
- NPR 21B-5
- NPR 22A-5
- NPR 21D-5
- NPR 11C-4
- NPR 12A-4
- NPR 12D-4
- NPR 13A-4
- NPR 23A-5
- NPR 23C-5
- NPR 23B-5
- NPR 22D-5

SHL Layout Detail  
N.T.S.

REV: 1 11-26-18 M.D. (WELL NAME CHANGE)

Caerus Oil & Gas LLC

NPR A05 596 PAD  
LOT 1, SECTION 5, T5S, R96W, 6th P.M.  
GARFIELD COUNTY, COLORADO

SURVEYED BY	DAYTON SLAUGH, C.R.	08-30-18	SCALE
DRAWN BY	M.D.	11-08-18	1" = 80'
MULTI-WELL PLAN		FIGURE #6	



UELS, LLC  
Corporate Office \* 85 South 200 East  
Vernal, UT 84078 \* (435) 789-1017

Sec. 32

Sec. 33

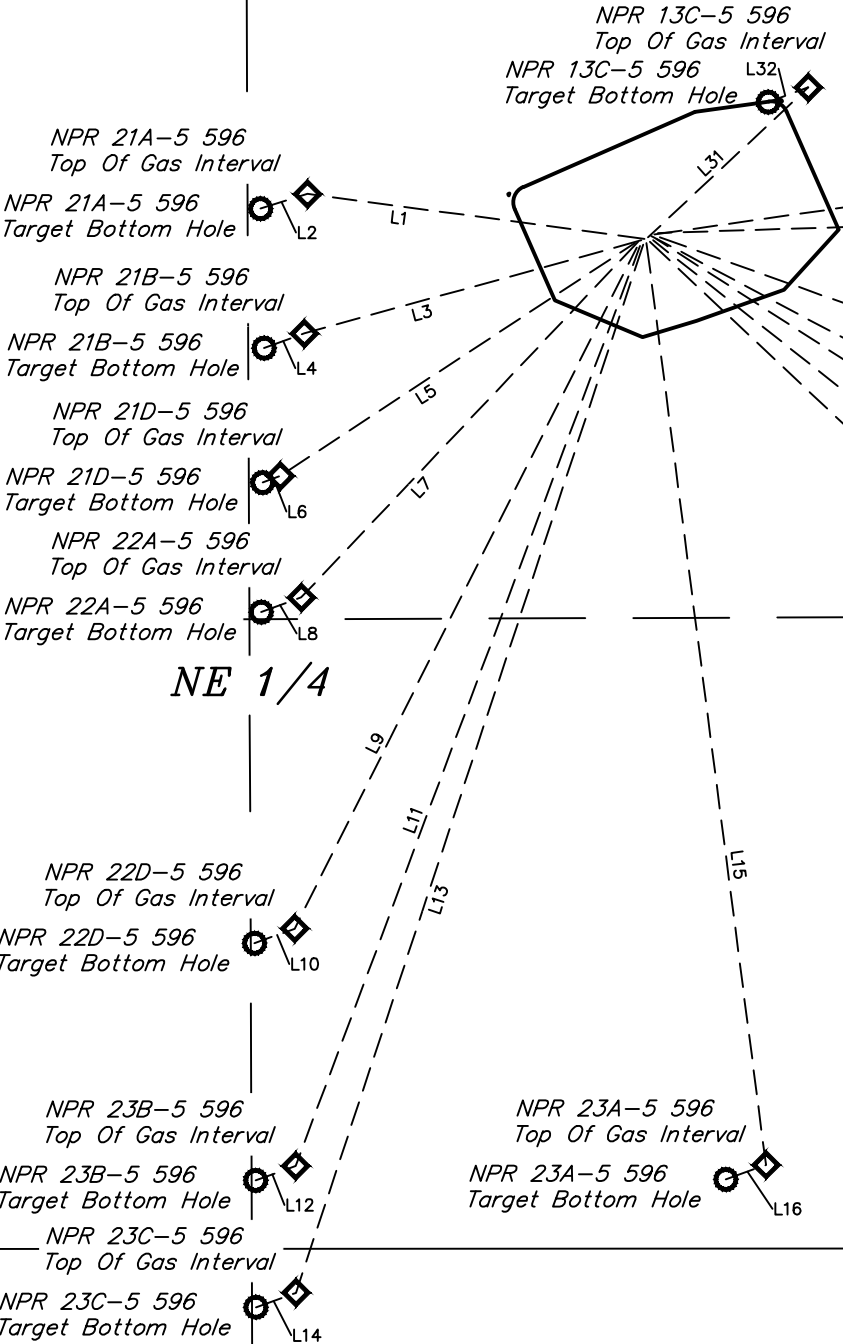
T4S

T5S

Section Line



LINE TABLE		
LINE	DIRECTION	LENGTH
L1	N82°25'17"W	708.56'
L2	S72°43'49"W	102.47'
L3	S74°33'27"W	728.58'
L4	S70°00'21"W	88.79'
L5	S56°42'40"W	883.74'
L6	S70°00'06"W	38.83'
L7	S43°26'01"W	1020.40'
L8	S69°59'59"W	88.80'



LINE TABLE		
LINE	DIRECTION	LENGTH
L9	S26°40'06"W	1587.69'
L10	S69°59'59"W	88.80'
L11	S20°31'30"W	2045.84'
L12	S69°59'59"W	88.80'
L13	S18°20'07"W	2300.19'
L14	S70°00'29"W	88.80'
L15	S07°22'55"E	1936.02'
L16	S69°59'45"W	88.81'

LINE TABLE		
LINE	DIRECTION	LENGTH
L17	S46°45'32"E	2603.89'
L18	S69°06'01"W	85.08'
L19	S51°43'25"E	2416.26'
L20	S70°00'07"W	88.80'
L21	S57°12'17"E	2242.16'
L22	S69°59'45"W	88.81'
L23	S62°02'04"E	1902.99'
L24	S70°00'13"W	88.78'

LINE TABLE		
LINE	DIRECTION	LENGTH
L25	S70°22'32"E	2002.08'
L26	S69°59'59"W	88.80'
L27	N88°10'44"E	1943.63'
L28	S70°00'07"W	88.80'
L29	N81°53'32"E	2074.58'
L30	S69°59'59"W	88.80'
L31	N46°55'41"E	457.51'
L32	S69°59'59"W	88.80'



10'  
NPR 11B-4 ○ ○ NPR 11C-4  
NPR 11A-4 ○ ○ NPR 12A-4  
NPR 11D-4 ○ ○ NPR 12D-4  
NPR 13C-5 ○ ○ NPR 13A-4  
NPR 21A-5 ○ ○ NPR 23A-5  
NPR 21B-5 ○ ○ NPR 23C-5  
NPR 22A-5 ○ ○ NPR 23B-5  
NPR 21D-5 ○ ○ NPR 22D-5

SHL Layout Detail  
N.T.S.

REV: 1 11-26-18 M.D. (WELL NAME CHANGE)

**LEGEND:**  
● = PROPOSED WELLHEAD.  
◆ = TOP OF GAS INTERVAL.  
○ = TARGET BOTTOM HOLE.  
▲ = SECTION CORNERS LOCATED. (NAD 83)



**UELS, LLC**  
Corporate Office \* 85 South 200 East  
Vernal, UT 84078 \* (435) 789-1017

**Caerus Oil & Gas LLC**

**NPR A05 596 PAD**  
**LOT 1, SECTION 5, T5S, R96W, 6th P.M.**  
**GARFIELD COUNTY, COLORADO**

SURVEYED BY	DAYTON SLAUGH, C.R.	08-30-18	SCALE
DRAWN BY	M.D.	11-08-18	1" = 400'
TARGET BOTTOM HOLE DRAWING		FIGURE #6A	