

Inspection Photos

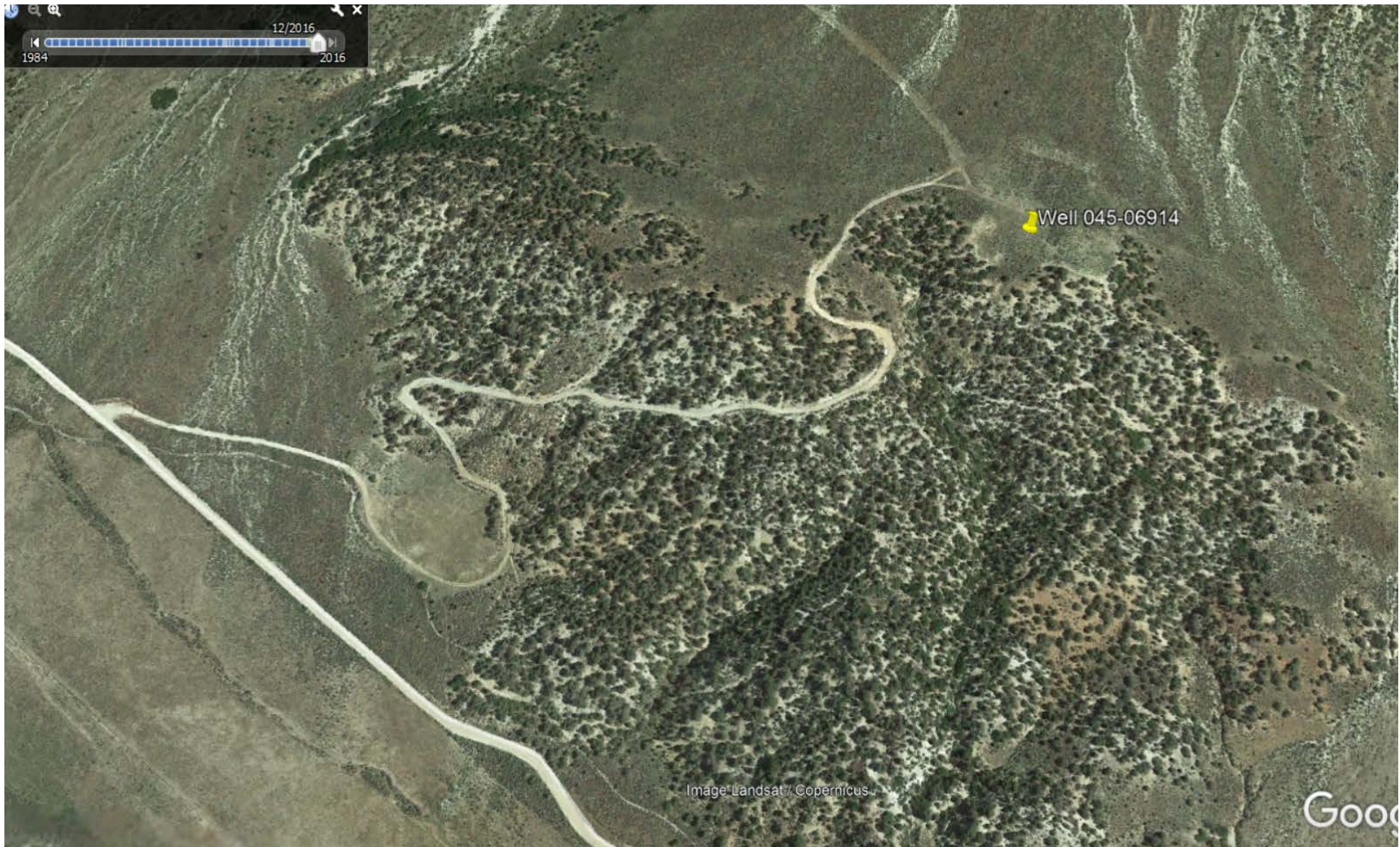
API#045-06914

Operator: Caerus

Inspection Number: 692400457

Inspection Date: 12/17/2018





Aerial:
2016 Google Earth aerial view of access road and Location.

December 17, 2018



Photo#1:
View to East, up access road as it begins to climb from flat.

December 17, 2018



COLORADO
Oil & Gas Conservation
Commission
Department of Natural Resources

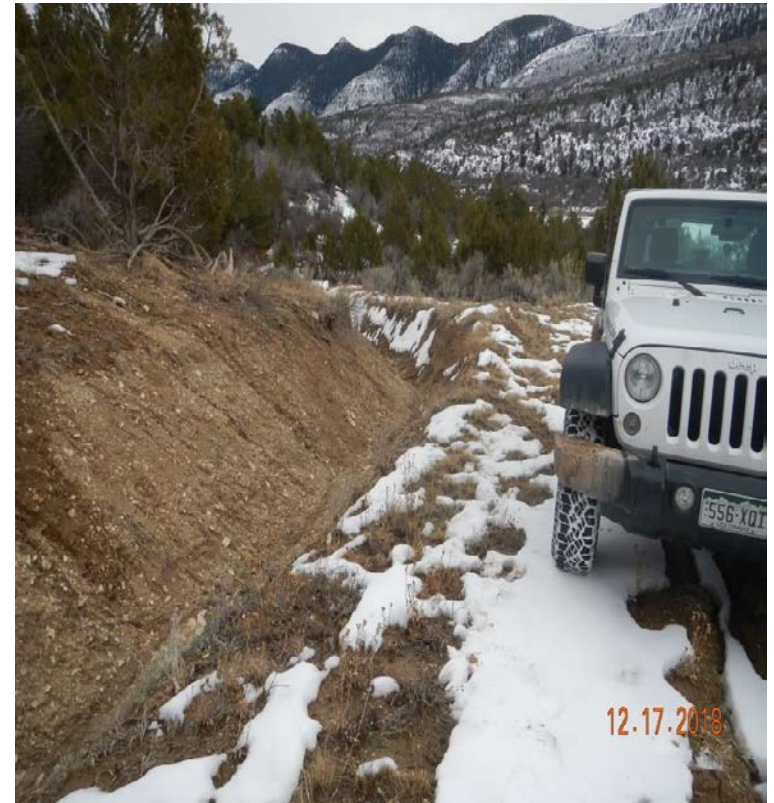
Inspection Photos: Caerus PA Standard Shale API#045-06914



Photo#2:

This & following photos are views moving up & along road to the North.

December 17, 2018



Photo#3:

View moving up & along road to the North.





Photo#4:
View moving up & along road to the North.

December 17, 2018



Photo#5:
View moving up & along road to the North.



COLORADO
Oil & Gas Conservation
Commission
Department of Natural Resources

Inspection Photos: Caerus PA Standard Shale API#045-06914



Photo#6:
View moving up & along road to the North.

December 17, 2018



Photo#7:
View moving up & along road to the North.



Photo#8:
View moving up & along road to the North.

December 17, 2018



Photo#9:
View moving up & along road to the North.





Photo#10:
View as road ascends to top of grade; Note C list weed, Mullein established on cut bank.

December 17, 2018



Photo#11:
View as road ascends to top of grade.



COLORADO
Oil & Gas Conservation
Commission
Department of Natural Resources

Inspection Photos: Caerus PA Standard Shale API#045-06914



Photo#12:
View on top, to East where road enters into Location.

December 17, 2018



COLORADO
Oil & Gas Conservation
Commission
Department of Natural Resources

Inspection Photos: Caerus PA Standard Shale API#045-06914