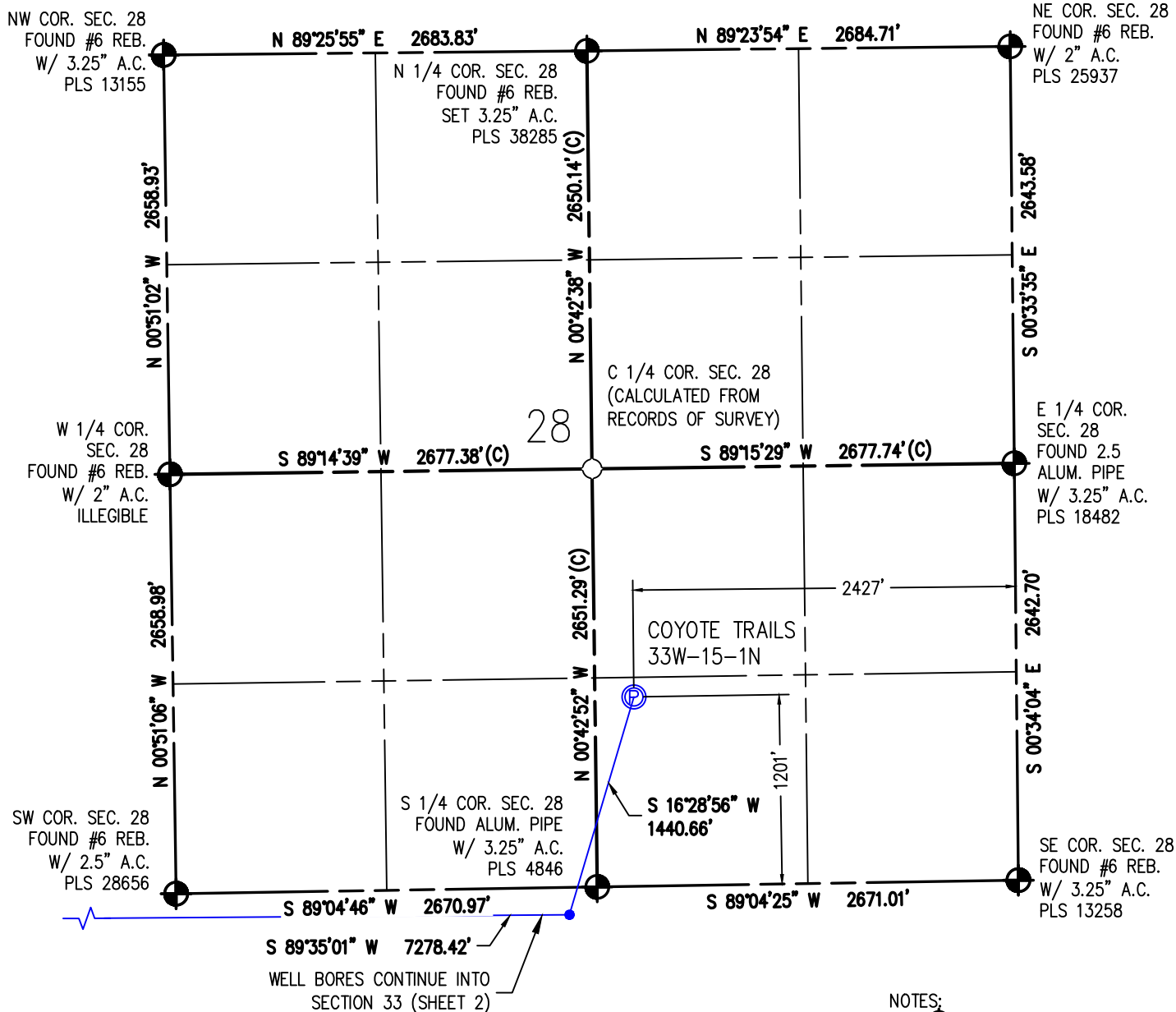


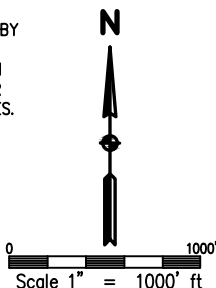
# WELL CERTIFICATION EXHIBIT COYOTE TRAILS 33W-15-1N

SW1/4 SE1/4 SEC. 28, T1N, R68W, 6TH P.M.



I HEREBY CERTIFY THAT THIS WELL LOCATION CERTIFICATE WAS PREPARED BY ME, OR UNDER MY DIRECT SUPERVISION, THAT THE FIELD WORK WAS COMPLETED ON 06/30/2017, THAT IT IS NOT A LAND SURVEY PLAT OR AN IMPROVEMENT SURVEY PLAT, AND THAT IT IS NOT TO BE RELIED UPON FOR ESTABLISHMENT OF FENCE, BUILDING OR OTHER FUTURE IMPROVEMENT LINES.

AARON A. DEMO  
Professional Land Surveyor Registration No. 38285  
State of Colorado  
FOR AND ON BEHALF OF BASELINE ENGINEERING CORP.



**SURFACE LOCATION**  
SEC. 28, T1N, R68W  
GROUND ELEVATION = 5277'  
PDOP = 1.3  
LATITUDE = 40.018116°  
LONGITUDE = -105.007730°  
1201' FSL, 2427' FEL  
**ENTRY POINT LOCATION**  
SEC. 33, T1N, R68W  
LATITUDE = 40.014331°  
LONGITUDE = -105.009216°  
174' FNL, 2492' FWL  
**BOTTOM HOLE LOCATION**  
SEC. 32, T1N, R68W  
LATITUDE = 40.014293°  
LONGITUDE = -105.035194°  
172' FNL, 460' FWL

## NOTES:

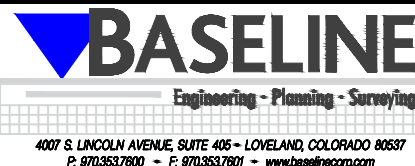
1. INDICATES SECTION CORNER
2. INDICATES CALCULATED CORNER
3. (C) INDICATES CALCULATED DIMENSION
4. ELEVATION BASED ON NAVD88 (GEOID12B)
5. BEARINGS DERIVED FROM COLORADO COORDINATE SYSTEM OF 1983 NORTH ZONE.
6. OPERATOR: TRAVIS WINNICKI
7. IMPROVEMENTS: SEE LOCATION DRAWING FOR ALL VISIBLE IMPROVEMENTS WITHIN 500' OF DISTURBED AREA.
8. WELL FOOTAGES ARE MEASURED AT RIGHT ANGLES TO THE SECTION LINES.

## NEAREST CULTURAL ITEMS:

BUILDING: 1426' S  
BUILDING UNIT: 1426' S  
HIGH OCCUPANCY BUILDING UNIT: 4665' SW  
DESIGNATED OUTSIDE ACTIVITY AREA: 5280'+  
PUBLIC ROAD: WELD COUNTY ROAD 4 1231' S  
ABOVE GROUND UTILITY: 1819' SE  
RAILROAD: 5280'+  
PROPERTY LINE: 247' W  
SURFACE USE: GRASSLAND.  
NEAREST EXISTING WELL: MEIKLE 28-1 667' SE



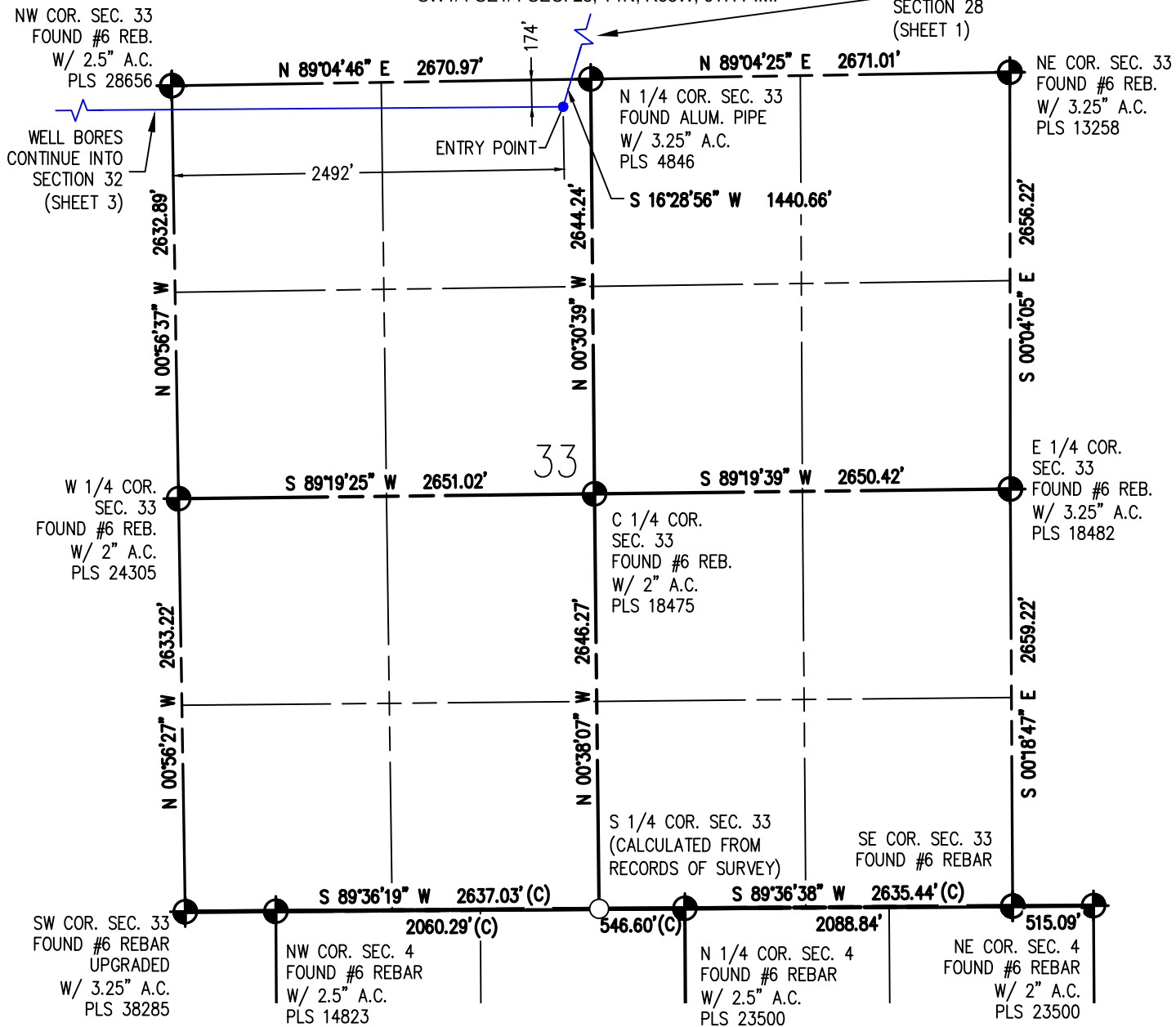
DRAWN BY	RPM	CHECKED BY	AAD
INITIAL SUBMITTAL	11/17/2017		
REVISED	5/8/2018		
DRAWING SIZE	8.5" X 11"		
JOB NO.	EXT01N68W28-01		
SHEET	1 OF 3		



# WELL CERTIFICATION EXHIBIT COYOTE TRAILS 33W-15-1N

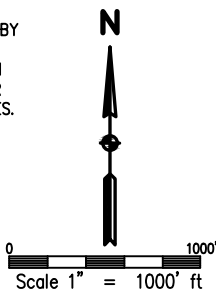
SW 1/4 SE 1/4 SEC. 28, T1N, R68W, 6TH P.M.

WELL BORES  
CONTINUE INTO  
SECTION 28  
(SHEET 1)



I HEREBY CERTIFY THAT THIS WELL LOCATION CERTIFICATE WAS PREPARED BY ME, OR UNDER MY DIRECT SUPERVISION, THAT THE FIELD WORK WAS COMPLETED ON 06/30/2017, THAT IT IS NOT A LAND SURVEY PLAT OR AN IMPROVEMENT SURVEY PLAT, AND THAT IT IS NOT TO BE RELIED UPON FOR ESTABLISHMENT OF FENCE, BUILDING OR OTHER FUTURE IMPROVEMENT LINES.

AARON A. DEMO  
Professional Land Surveyor Registration No. 38285  
State of Colorado  
FOR AND ON BEHALF OF BASELINE ENGINEERING CORP.



SURFACE LOCATION  
SEC. 28, T1N, R68W  
GROUND ELEVATION = 5277'  
PDOP = 1.3  
LATITUDE = 40.018116°  
LONGITUDE = -105.007730°  
1201' FSL, 2427' FEL  
ENTRY POINT LOCATION  
SEC. 33, T1N, R68W  
LATITUDE = 40.014331°  
LONGITUDE = -105.009216°  
174' FNL, 2492' FWL  
BOTTOM HOLE LOCATION  
SEC. 32, T1N, R68W  
LATITUDE = 40.014293°  
LONGITUDE = -105.035194°  
172' FNL, 460' FWL

## NOTES:

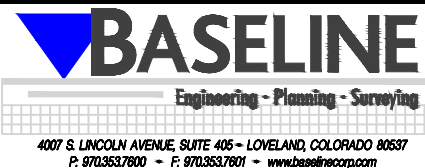
1. INDICATES SECTION CORNER
2. INDICATES CALCULATED CORNER
3. (C) INDICATES CALCULATED DIMENSION
4. ELEVATION BASED ON NAVD88 (GEOID12B)
5. BEARINGS DERIVED FROM COLORADO COORDINATE SYSTEM OF 1983 NORTH ZONE.
6. OPERATOR: TRAVIS WINNICKI
7. IMPROVEMENTS: SEE LOCATION DRAWING FOR ALL VISIBLE IMPROVEMENTS WITHIN 500' OF DISTURBED AREA.
8. WELL FOOTAGES ARE MEASURED AT RIGHT ANGLES TO THE SECTION LINES.

## NEAREST CULTURAL ITEMS:

BUILDING: 1426' S  
BUILDING UNIT: 1426' S  
HIGH OCCUPANCY BUILDING UNIT: 4665' SW  
DESIGNATED OUTSIDE ACTIVITY AREA: 5280' +  
PUBLIC ROAD: WELD COUNTY ROAD 4 1231' S  
ABOVE GROUND UTILITY: 1819' SE  
RAILROAD: 5280' +  
PROPERTY LINE: 247' W  
SURFACE USE: GRASSLAND.  
NEAREST EXISTING WELL: MEIKLE 28-1 667' SE



DRAWN BY	RPM	CHECKED BY	AAD
INITIAL SUBMITTAL	11/17/2017		
REVISED	5/8/2018		
DRAWING SIZE	8.5" X 11"		
JOB NO.	EXT01N68W28-01		
SHEET	2 of 3		



# WELL CERTIFICATION EXHIBIT COYOTE TRAILS 33W-15-1N

SW1/4 SE1/4 SEC. 28, T1N, R68W, 6TH P.M.

NW COR. SEC. 32  
FOUND #6 REB.  
W/ 2-1/2" A.C.  
PLS 24968

NE COR. SEC. 32  
FOUND #6 REB.  
W/ 2-1/2" A.C.  
PLS 28656

N 1/4 COR. SEC. 32  
FOUND #6 REB.  
W/ 3.25" A.C.  
PLS 28656

WELL BORE  
CONTINUES INTO  
SECTION 33  
(SHEET 2)

W 1/4 COR.  
SEC. 32  
FOUND #6 REB.  
W/ 2-1/2" A.C.  
PLS 28256

E 1/4 COR.  
SEC. 32  
FOUND #6 REB.  
W/ 2" A.C.  
PLS 24302

C 1/4 COR. SEC. 32  
(CALCULATED FROM  
RECORDS OF SURVEY)

SW COR. SEC. 32  
FOUND #6 REB.  
W/ 2.5" A.C.  
ILLEGIBLE

S 1/4 COR. SEC. 32  
SET #6 REB.  
W/ 3.25" A.C.  
PLS 38285

SE COR. SEC. 32  
SET #6 REB.  
W/ 3.25" A.C.  
PLS 38285

NW COR. SEC. 5  
FOUND 2.5" A.C.  
ILLEGIBLE

N 1/4 COR. SEC. 5  
FOUND #6 REB.  
W/ 2.5" A.C.  
PLS 14823

NE COR. SEC. 5  
FOUND #6 REB.  
W/ 2.5" A.C.  
PLS 14823

I HEREBY CERTIFY THAT THIS WELL LOCATION CERTIFICATE WAS PREPARED BY ME, OR UNDER MY DIRECT SUPERVISION, THAT THE FIELD WORK WAS COMPLETED ON 06/30/2017, THAT IT IS NOT A LAND SURVEY PLAT OR AN IMPROVEMENT SURVEY PLAT, AND THAT IT IS NOT TO BE RELIED UPON FOR ESTABLISHMENT OF FENCE, BUILDING OR OTHER FUTURE IMPROVEMENT LINES.

AARON A. DEMO  
Professional Land Surveyor Registration No. 38285  
State of Colorado  
FOR AND ON BEHALF OF BASELINE ENGINEERING CORP.

N

0 1000'  
Scale 1" = 1000' ft

SURFACE LOCATION  
SEC. 28, T1N, R68W  
GROUND ELEVATION = 5277'  
PDOP = 1.3  
LATITUDE = 40.018116°  
LONGITUDE = -105.007730°  
1201' FSL, 2427' FEL  
ENTRY POINT LOCATION  
SEC. 33, T1N, R68W  
LATITUDE = 40.014331°  
LONGITUDE = -105.009216°  
174' FNL, 2492' FWL  
BOTTOM HOLE LOCATION  
SEC. 32, T1N, R68W  
LATITUDE = 40.014293°  
LONGITUDE = -105.035194°  
172' FNL, 460' FWL

## NOTES:

1. ● INDICATES SECTION CORNER
2. ○ INDICATES CALCULATED CORNER
3. (C) INDICATES CALCULATED DIMENSION
4. ELEVATION BASED ON NAVD88 (GEOID12B)
5. BEARINGS DERIVED FROM COLORADO COORDINATE SYSTEM OF 1983 NORTH ZONE.
6. OPERATOR: TRAVIS WINNICKI
7. IMPROVEMENTS: SEE LOCATION DRAWING FOR ALL VISIBLE IMPROVEMENTS WITHIN 500' OF DISTURBED AREA.
8. WELL FOOTAGES ARE MEASURED AT RIGHT ANGLES TO THE SECTION LINES.

## NEAREST CULTURAL ITEMS:

BUILDING: 1426' S  
BUILDING UNIT: 1426' S  
HIGH OCCUPANCY BUILDING UNIT: 4665' SW  
DESIGNATED OUTSIDE ACTIVITY AREA: 5280' +  
PUBLIC ROAD: WELD COUNTY ROAD 4 1231' S  
ABOVE GROUND UTILITY: 1819' SE  
RAILROAD: 5280' +  
PROPERTY LINE: 247' W  
SURFACE USE: GRASSLAND.  
NEAREST EXISTING WELL: MEIKLE 28-1 667' SE



DRAWN BY	RPM	CHECKED BY	AAD
INITIAL SUBMITTAL	11/17/2017		
REVISED	5/8/2018		
DRAWING SIZE	8.5" X 11"		
JOB NO.	EXT01N68W28-01		
SHEET	3 of 3		

