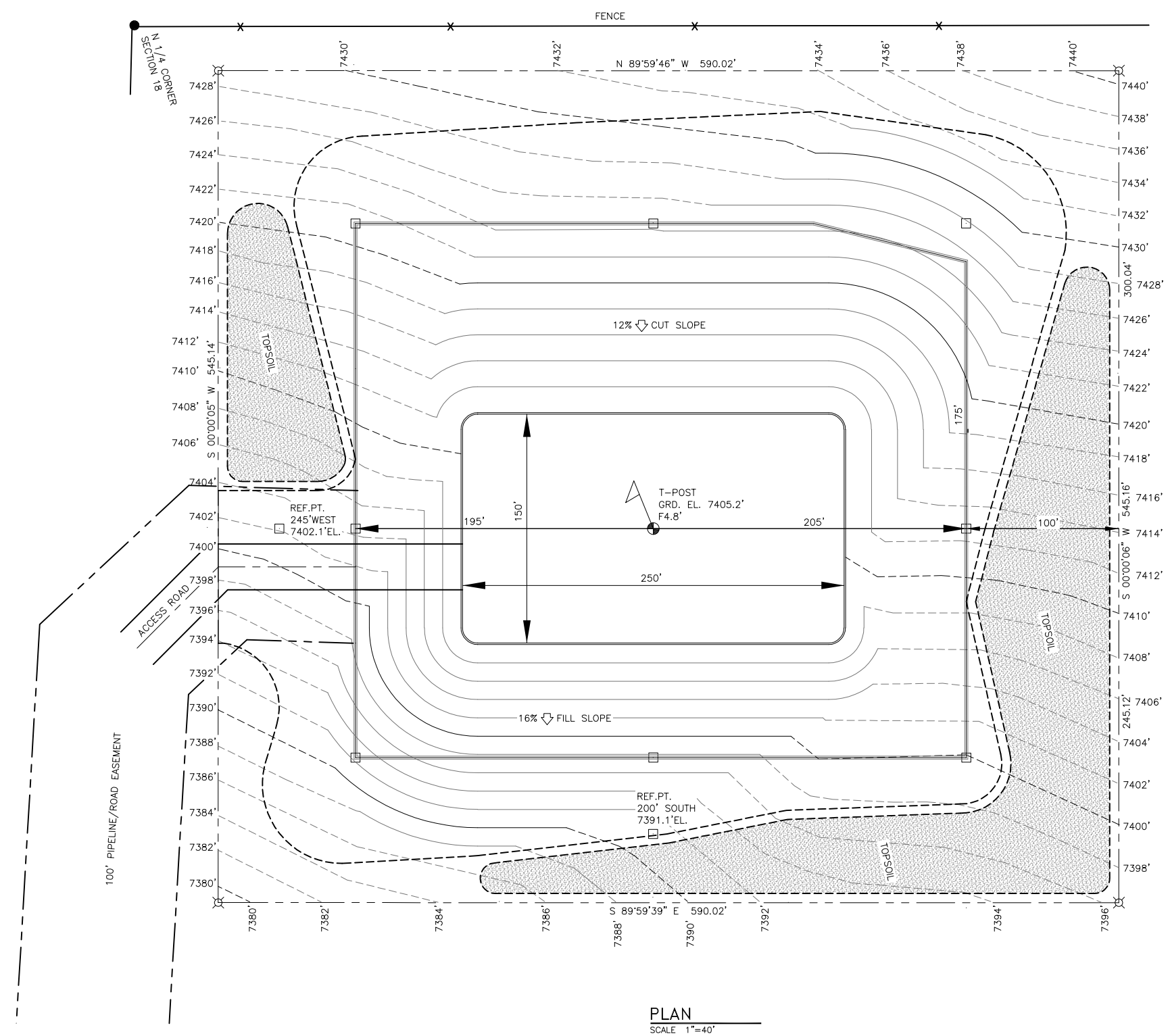


- LEGEND**
- T-POST LOCATION
  - LATH/PIN FLAG
  - U-POST/LATH
  - RIG ANCHOR
  - 6" SLIDE VALVE
  - CULVERTS
  - DIVERSION DITCH



**PLAN**  
SCALE 1"=40'

LIMITS OF DISTURBANCE 7.38 ACRES  
 PAD 3.19 ACRES  
 SLOPES 2.34 ACRES  
 APPROXIMATE DIRT QUANTITIES:  
 37,905 CYS. CUT, 27,450 CYS. FILL,  
 6,000 CYS. EXCESS (4,500 CYS. TOP SOIL)

**NOTES:**

INFORMATION BASED ON A SURVEY OR SURVEYS ON THE GROUND PROVIDED BY:  
 HUDDLESTON LAND SURVEYING  
 P.O. BOX 44 - CORTEZ, CO. 81321  
 (970) 565-3330

REVISIONS			
NO.	DESCRIPTION	DATE	BY
1	ISSUED FOR PERMIT	12/10/18	GEG

**KINDER MORGAN**  
 CO<sub>2</sub> COMPANY, L.P.

17801 HWY 481  
 Cortez, CO 81321

REFERENCE TITLE SHEET DRAWING:

<b>CO<sub>2</sub> WELL PAD SITE PLAN</b>		DOE CANYON FACILITIES	
<b>DC-16 WELL PAD</b>		DELORES COUNTY, COLORADO	
<b>INTERIM RECLAMATION PLAN</b>			
DRAWN BY: GEG	12/10/18	REVIEWED BY:	SCALE: AS-NOTED
CHECKED BY: CM		APPROVED BY:	DRAWING NUMBER WP-DC-16-PERM-004