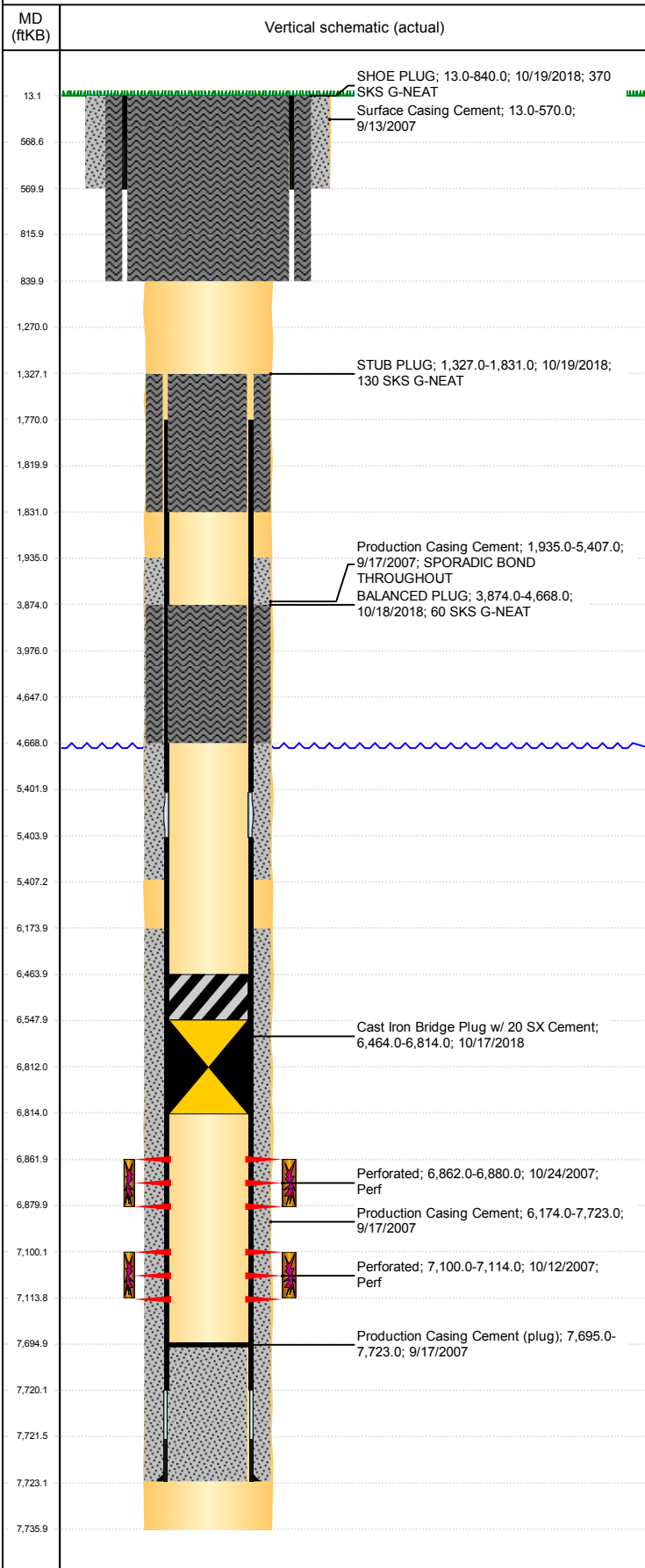


Well Name: GURTLE H25-27

DEVIATED, ORIGINAL HOLE, 12/18/2018 3:36:17 PM



Well Header									
API 05-123-26247		Business Unit DJ BASIN			District 15		Well Config DEVIATED		
KB - GL / MSL (ft... 13.00		Spud Date 9/12/2007		P & A Date 10/19/2018		Well Production Status PA			SoRT Yes
Comment									
Surface Location (Congressional)									
Qtr 3 SE	Qtr 4 SE	Section 24	Twnshp 3	Twnsh... N	Range 65	Rng E/... W	Actual Latitude (°) 40.20515493	Actual Longitude (°) -104.60572195	
Wellbore Sections									
Section Des			Size (in)			Act Top, MD (ftKB)		Act Btm, MD (ftKB)	
SURFACE			12 1/4			13		570	
PRODUCTION			6 1/4			570		7,736	
Casing Strings									
Csg Des			Run Date		OD (in)	Wt/Len (lb/ft)	Grade	Top, MD (ftKB)	MD (ftKB)
Surface Casing			9/13/2007		8 5/8	24.00	J-55	13.0	570.0
Production			9/17/2007		4 1/2	11.60	N-80	13.0	7,723.0
Cement									
Des					Start Date		Top (ftKB)		Btm (ftKB)
Surface Casing Cement					9/13/2007		13.0		570.0
Production Casing Cement					9/17/2007		1,935.0		5,407.0
Production Casing Cement					9/17/2007		6,174.0		7,723.0
BALANCED PLUG					10/18/2018		3,874.0		4,668.0
STUB PLUG					10/19/2018		1,327.0		1,831.0
SHOE PLUG					10/19/2018		13.0		840.0
Zone Statuses									
Zone Name		Status Date	Status	Fluid Type	Job			Prod Method	
CODELL		11/27/2007	PR		DRILLING/COMPLETION - ORIGINAL, 9/12/2007...				
CODELL		10/17/2018	P&A		ABANDON WELL, 10/17/2018 06:00				
NIOBRARA		11/27/2007	PR		DRILLING/COMPLETION - ORIGINAL, 9/12/2007...				
NIOBRARA		10/17/2018	P&A		ABANDON WELL, 10/17/2018 06:00				
Perforation Data									
Linked Zone			Bnch/Stg	Entered Shot Total	Top (ftKB)		Btm (ftKB)		Date
NIOBRARA, ORIGINAL HOLE			B	72	6,862.00		6,880.00		10/24/2007
CODELL, ORIGINAL HOLE				56	7,100.00		7,114.00		10/12/2007
Stimulation Intervals									
Zone				Start Date		Top (ftKB)		Btm (ftKB)	
NIOBRARA, ORIGINAL HOLE				10/24/2007		6,862.0		6,880.0	
CODELL, ORIGINAL HOLE				10/24/2007		7,100.0		7,114.0	
Other In Hole									
Run Date		Des				OD (in)	Top (ftKB)		Btm (ftKB)
10/17/2018		Cast Iron Bridge Plug w/ 20 SX Cement				4	6,464.0		6,814.0
Logs									
Date		Type				Top, MD (ftKB)		Btm, MD (ftKB)	
10/5/2007		CBL/CCL/GR				13.0		7,688.0	
10/9/2007		PULSED NEUTRON				570.0		7,678.0	
9/29/2014		GYRO				10.0		7,000.0	
Plug Back Total Depths									
Date		Type		Com				Depth (ftKB)	
9/17/2007		GUIDE SHOE		GUIDE SHOE				7,705.0	
10/5/2007		FILL		DEPTH LOGGER FROM CBL				7,695.0	