



CRESTONE PEAK
RESOURCES

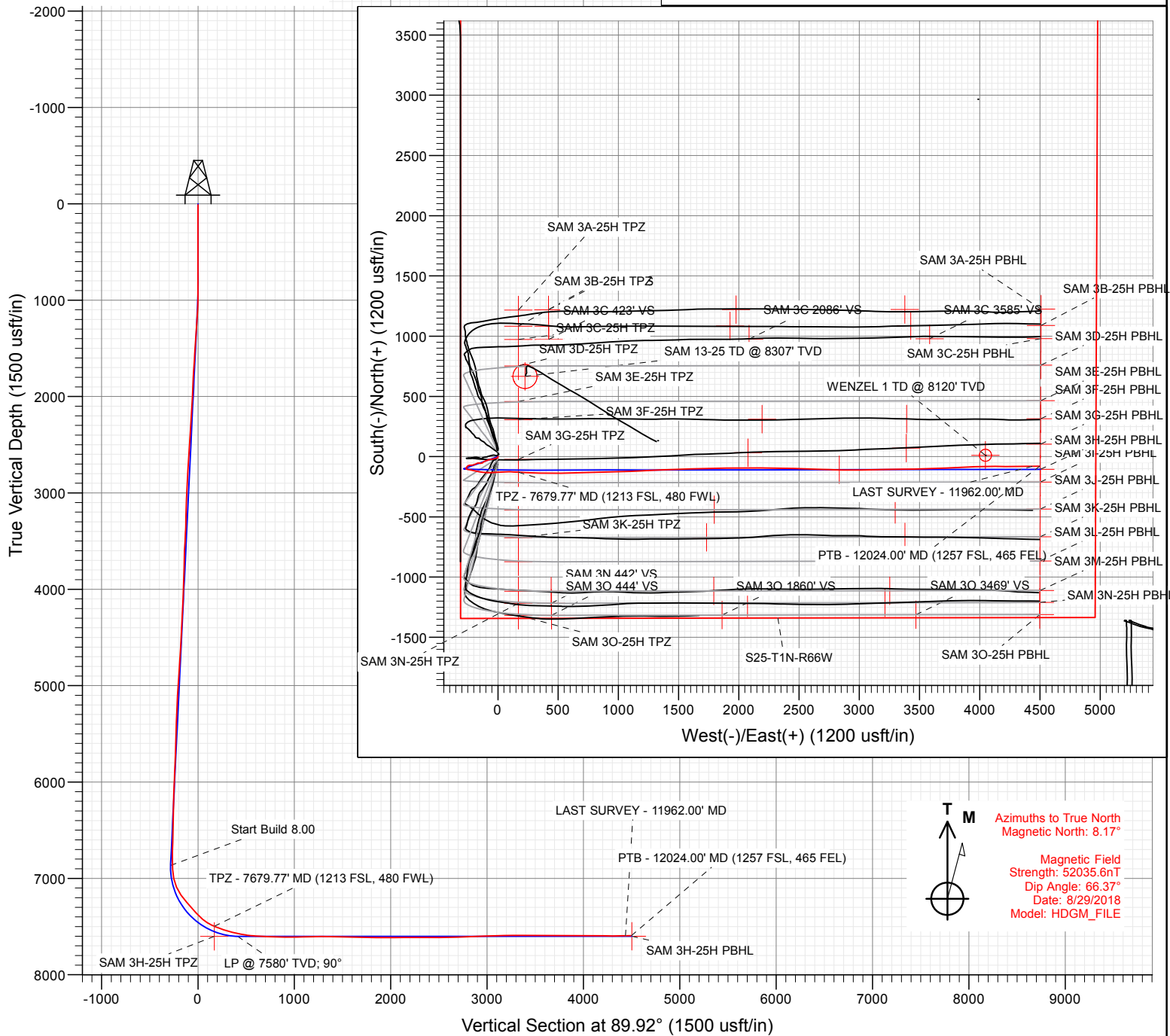
SECTION DETAILS

Sec	MD	Inc	Azi	TVD	+N/-S	+E/-W	Dleg	TFace	Vsect	Target
1	0.00	0.00	0.00	0.00	0.00	0.00	0.00	0.00	0.00	
2	900.00	0.00	0.00	900.00	0.00	0.00	0.00	0.00	0.00	
3	1046.40	2.93	250.48	1046.34	-1.25	-3.53	2.00	250.48	-3.53	
4	6859.06	2.93	250.48	6851.41	-100.46	-283.38	0.00	0.00	-283.53	
5	8018.58	90.00	89.91	7602.00	-112.15	432.00	8.00	-160.54	431.84	
6	10420.58	90.00	89.91	7602.00	-108.49	2834.00	0.00	0.00	2833.84	SAM 3H 2834' TGT
7	10424.01	90.07	89.91	7602.00	-108.48	2837.44	2.00	0.00	2837.27	
8	12089.67	90.07	89.91	7600.00	-105.95	4503.09	0.00	0.00	4502.93	SAM 3H-25H PBHL

Project: DJ BASIN
Site: S25-T1N-R66W (SAM)
Well: SAM 3H-25H-M166
Wellbore: OH
Design: FINAL

FINAL
SAM 3H-25H-M166
383837 185146 413837 185255; LR
23' KB @ 5109.00usf
Ground Level @ 5086.00
North American Datum 1983
Well SAM 3H-25H-M166, True North

Type	Target	Origin	Type	N/S	E/W	From TVD
	No Target (Freehand)	Azimuth	Src	0.00	0.00	0.00
		89.92				
Name		TVD	+N/-S	+E/-W	Latitude	Longitude
SAM 3G-25H TPZ		7369.00	-22.57	169.73	40.018640	-104.733248
SAM 3G-25H PBHL		7376.00	-103.88	4503.90	40.018986	-104.717773
SAM 3H-25H PBHL		7600.00	-105.95	4503.09	40.018410	-104.717776
SAM 3H 2834' TGT		7602.00	-108.49	2834.00	40.018404	-104.723735
SAM 3H-25H TPZ		7602.00	-112.55	169.73	40.018393	-104.733248



WELL DETAILS: SAM 3H-25H-M166

+N/-S	+E/-W	Northing	Ground Level:	5086.00	Latitude	Longitude
0.00	0.00	1250586.45	Easting	3214577.02	40.018702	-104.733854





CRESTONE PEAK
RESOURCES

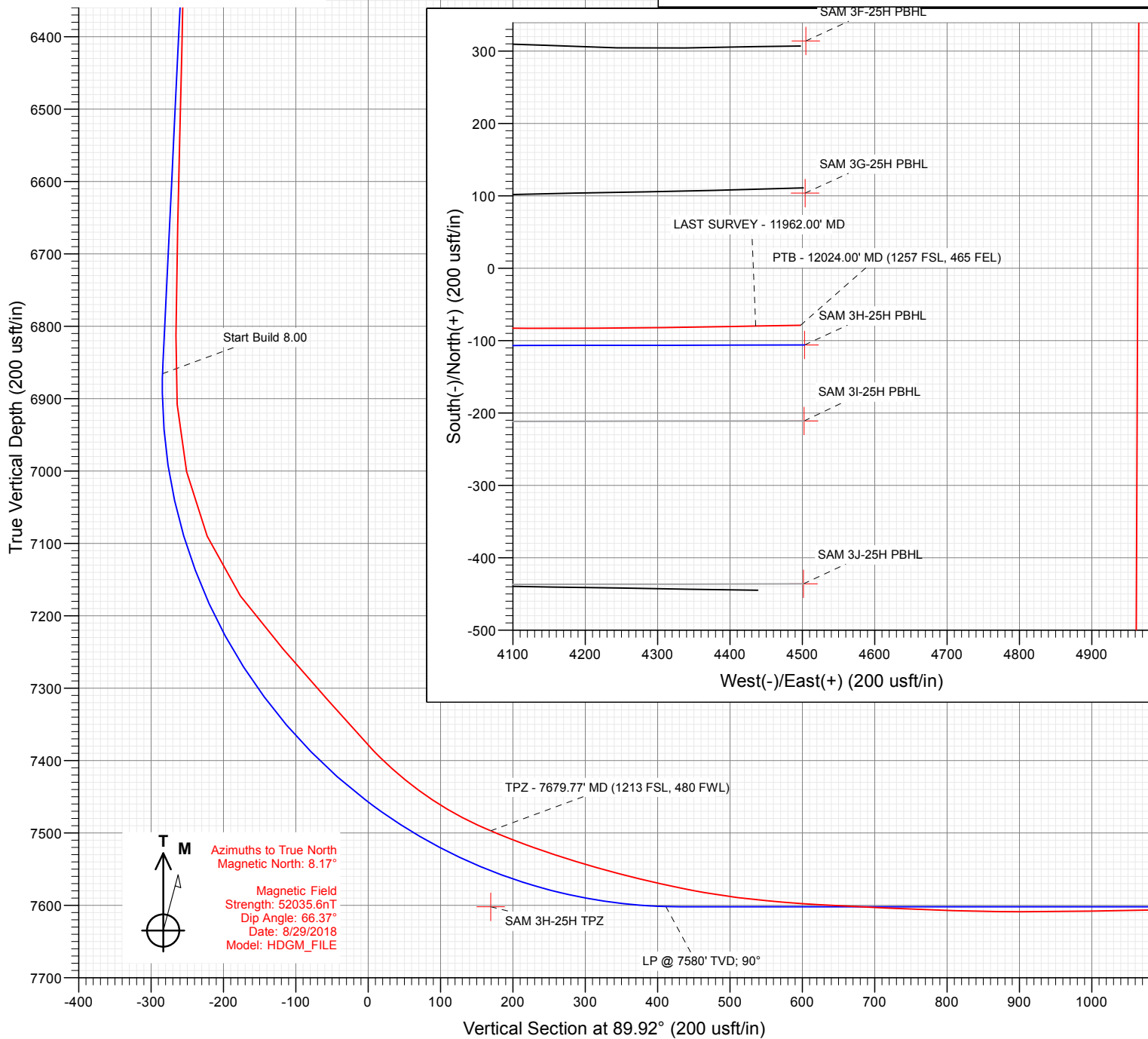
SECTION DETAILS

Sec	MD	Inc	Azi	TVD	+N/-S	+E/-W	Dleg	TFace	VSec	Target
1	0.00	0.00	0.00	0.00	0.00	0.00	0.00	0.00	0.00	
2	900.00	0.00	0.00	900.00	0.00	0.00	0.00	0.00	0.00	
3	1046.40	2.93	250.48	1046.34	-1.25	-3.53	2.00	250.48	-3.53	
4	6859.06	2.93	250.48	6851.41	-100.46	-283.38	0.00	0.00	-283.53	
5	8018.58	90.00	89.91	7602.00	-112.15	432.00	8.00	-160.54	431.84	
6	10420.58	90.00	89.91	7602.00	-108.49	2834.00	0.00	0.00	2833.84	SAM 3H 2834' TGT
7	10424.01	90.07	89.91	7602.00	-108.48	2837.44	2.00	0.00	2837.27	
8	12089.67	90.07	89.91	7600.00	-105.95	4503.09	0.00	0.00	4502.93	SAM 3H-25H PBHL

Project: DJ BASIN
Site: S25-T1N-R66W (SAM)
Well: SAM 3H-25H-M166
Wellbore: OH
Design: FINAL

FINAL
SAM 3H-25H-M166
383837 185146 413837 185255; LR
23' KB @ 5109.00usf
Ground Level @ 5086.00
North American Datum 1983
Well SAM 3H-25H-M166, True North

Name	Type	User	Target	No Target (Freehand)	Asimuth	89.92	TVD	Origin	Type	Slot	+N/-S	+E/-W	N/S	E/W	From	TVD	Latitude	Longitude
SAM 3G-25H TPZ							7369.00				-22.57	169.73	40.018640				-104.733248	
SAM 3G-25H PBHL							7376.00				103.88	4503.90	40.018986				-104.717773	
SAM 3H-25H PBHL							7600.00				-105.95	4503.09	40.018410				-104.717776	
SAM 3H 2834' TGT							7602.00				-108.49	2834.00	40.018404				-104.723735	
SAM 3H-25H TPZ							7602.00				-112.55	169.73	40.018393				-104.733248	



Azimuths to True North
Magnetic North: 8.17°

Magnetic Field
Strength: 52035.6nT
Dip Angle: 66.37°
Date: 8/29/2018
Model: HDGM_FILE

WELL DETAILS: SAM 3H-25H-M166

+N/-S	+E/-W	Northing	Ground Level:	5086.00	Latitude	Longitude
0.00	0.00	1250586.45	Easting	3214577.02	40.018702	-104.733854

CATHEDRAL



Survey Report

Company:	Crestone Peak Resources	Local Co-ordinate Reference:	Well SAM 3H-25H-M166
Project:	DJ BASIN	TVD Reference:	23' KB @ 5109.00usft
Site:	S25-T1N-R66W (SAM)	MD Reference:	23' KB @ 5109.00usft
Well:	SAM 3H-25H-M166	North Reference:	True
Wellbore:	OH	Survey Calculation Method:	Minimum Curvature
Design:	FINAL	Database:	USA EDM 5000 Multi Users DB

Project	DJ BASIN		
Map System:	US State Plane 1983	System Datum:	Mean Sea Level
Geo Datum:	North American Datum 1983		
Map Zone:	Colorado Northern Zone		

Site		S25-T1N-R66W (SAM)			
Site Position:		Northing:	1,251,849.37 usft	Latitude:	40.022061
From:	Lat/Long	Easting:	3,219,074.73 usft	Longitude:	-104.717756
Position Uncertainty:	0.00 usft	Slot Radius:	13-3/16"	Grid Convergence:	0.51 °

Well	SAM 3H-25H-M166					
Well Position	+N/-S	0.00 usft	Northing:	1,250,586.45 usft	Latitude:	40.018702
	+E/-W	0.00 usft	Easting:	3,214,577.02 usft	Longitude:	-104.733854
Position Uncertainty		0.00 usft	Wellhead Elevation:	0.00 usft	Ground Level:	5,086.00 usft

Wellbore	OH				
Magnetics	Model Name	Sample Date	Declination (°)	Dip Angle (°)	Field Strength (nT)
	HDGM_FILE	8/29/2018	8.17	66.37	52,035.60000000

Design	FINAL				
Audit Notes:					
Version:	1.0	Phase:	ACTUAL	Tie On Depth:	0.00
Vertical Section:	Depth From (TVD) (usft)	+N/-S (usft)	+E/-W (usft)	Direction (°)	
	0.00	0.00	0.00	89.92	

Survey Program	Date	10/22/2018			
From (usft)	To (usft)	Survey (Wellbore)	Tool Name	Description	
169.00	2,378.00	Survey #1 (OH)	VESSI_GYROFLEX	VESSI Gyroflex Gyro	
2,460.00	12,024.00	Survey #2 (OH)	MWD+HDGM	OWSG MWD + HDGM	

Survey									
Measured Depth (usft)	Inclination (°)	Azimuth (°)	Vertical Depth (usft)	+N/-S (usft)	+E/-W (usft)	Vertical Section (usft)	Dogleg Rate (°/100usf)	Build Rate (°/100u)	Formations / Comments
10.00	0.00	0.00	10.00	0.00	0.00	0.00	0.00	0.00	
169.00	0.35	217.46	169.00	-0.39	-0.30	-0.30	0.22	0.22	
260.00	0.21	298.27	260.00	-0.53	-0.61	-0.61	0.42	-0.15	
352.00	0.43	121.79	352.00	-0.63	-0.47	-0.47	0.70	0.24	
413.00	0.59	169.98	413.00	-1.06	-0.22	-0.22	0.72	0.26	
499.00	0.64	207.26	498.99	-1.92	-0.36	-0.36	0.46	0.06	
580.00	0.78	194.86	579.98	-2.86	-0.71	-0.71	0.26	0.17	
663.00	0.86	191.78	662.98	-4.01	-0.98	-0.99	0.11	0.10	
746.00	1.16	177.54	745.96	-5.46	-1.07	-1.08	0.47	0.36	
829.00	0.75	172.00	828.95	-6.84	-0.96	-0.97	0.51	-0.49	
911.00	0.75	176.83	910.94	-7.91	-0.86	-0.87	0.08	0.00	
997.00	1.24	185.01	996.93	-9.40	-0.91	-0.92	0.59	0.57	

Survey Report

Company:	Crestone Peak Resources	Local Co-ordinate Reference:	Well SAM 3H-25H-M166
Project:	DJ BASIN	TVD Reference:	23' KB @ 5109.00usft
Site:	S25-T1N-R66W (SAM)	MD Reference:	23' KB @ 5109.00usft
Well:	SAM 3H-25H-M166	North Reference:	True
Wellbore:	OH	Survey Calculation Method:	Minimum Curvature
Design:	FINAL	Database:	USA EDM 5000 Multi Users DB

Survey

Measured Depth (usft)	Inclination (°)	Azimuth (°)	Vertical Depth (usft)	+N/-S (usft)	+E/-W (usft)	Vertical Section (usft)	Dogleg Rate (°/100usf)	Build Rate (°/100u)	Formations / Comments
1,083.00	2.18	246.04	1,082.90	-10.99	-2.48	-2.50	2.23	1.09	
1,164.00	4.03	266.61	1,163.78	-11.78	-6.73	-6.75	2.63	2.28	
1,225.00	4.54	271.37	1,224.61	-11.85	-11.29	-11.30	1.02	0.84	
1,308.00	4.28	254.23	1,307.37	-12.61	-17.55	-17.57	1.61	-0.31	
1,392.00	4.36	243.44	1,391.13	-14.89	-23.42	-23.44	0.97	0.10	
1,475.00	3.60	257.89	1,473.93	-16.85	-28.79	-28.82	1.51	-0.92	
1,558.00	3.45	259.88	1,556.77	-17.84	-33.80	-33.83	0.23	-0.18	
1,641.00	3.68	258.55	1,639.61	-18.80	-38.87	-38.90	0.29	0.28	
1,723.00	3.30	260.93	1,721.46	-19.70	-43.78	-43.81	0.50	-0.46	
1,806.00	3.12	242.73	1,804.33	-21.11	-48.14	-48.18	1.24	-0.22	
1,892.00	2.95	265.66	1,890.21	-22.35	-52.43	-52.46	1.42	-0.20	
1,975.00	3.14	263.74	1,973.10	-22.76	-56.82	-56.85	0.26	0.23	
2,058.00	3.52	266.44	2,055.96	-23.16	-61.62	-61.66	0.50	0.46	
2,147.00	2.89	252.83	2,144.82	-24.00	-66.49	-66.53	1.11	-0.71	
2,237.00	3.07	256.04	2,234.70	-25.25	-71.00	-71.04	0.27	0.20	
2,327.00	3.32	255.62	2,324.56	-26.48	-75.86	-75.90	0.28	0.28	
2,378.00	3.60	250.52	2,375.46	-27.38	-78.80	-78.84	0.82	0.55	
2,460.00	4.22	254.01	2,457.27	-29.07	-84.13	-84.17	0.81	0.76	
2,555.00	4.09	251.99	2,552.02	-31.08	-90.71	-90.76	0.21	-0.14	
2,649.00	4.09	248.39	2,645.78	-33.35	-97.02	-97.07	0.27	0.00	
2,743.00	3.69	246.10	2,739.57	-35.81	-102.90	-102.95	0.46	-0.43	
2,849.00	3.47	243.64	2,845.36	-38.61	-108.89	-108.95	0.25	-0.21	
2,943.00	3.30	242.85	2,939.20	-41.11	-113.85	-113.91	0.19	-0.18	
3,038.00	3.08	240.65	3,034.05	-43.61	-118.51	-118.57	0.26	-0.23	
3,132.00	2.37	236.78	3,127.94	-45.91	-122.33	-122.40	0.78	-0.76	
3,227.00	2.02	212.00	3,222.87	-48.41	-124.86	-124.94	1.05	-0.37	
3,322.00	1.89	212.35	3,317.82	-51.15	-126.59	-126.67	0.14	-0.14	
3,416.00	3.16	259.72	3,411.73	-52.93	-129.97	-130.05	2.49	1.35	
3,511.00	2.86	260.69	3,506.60	-53.78	-134.88	-134.96	0.32	-0.32	
3,606.00	2.73	263.33	3,601.49	-54.42	-139.47	-139.55	0.19	-0.14	
3,701.00	2.24	266.05	3,696.40	-54.81	-143.57	-143.65	0.53	-0.52	
3,795.00	1.54	270.01	3,790.35	-54.94	-146.67	-146.75	0.76	-0.74	
3,890.00	1.01	292.68	3,885.33	-54.62	-148.71	-148.80	0.76	-0.56	
3,984.00	0.88	307.89	3,979.31	-53.85	-150.05	-150.13	0.30	-0.14	
4,078.00	2.73	264.82	4,073.27	-53.61	-152.85	-152.93	2.31	1.97	
4,173.00	2.81	271.06	4,168.16	-53.77	-157.43	-157.51	0.33	0.08	
4,268.00	2.59	267.37	4,263.05	-53.83	-161.90	-161.98	0.30	-0.23	
4,362.00	2.42	270.18	4,356.96	-53.92	-166.01	-166.09	0.22	-0.18	
4,457.00	4.48	248.30	4,451.79	-55.29	-171.46	-171.54	2.54	2.17	
4,551.00	4.31	244.08	4,545.51	-58.19	-178.05	-178.14	0.39	-0.18	
4,646.00	3.74	245.66	4,640.28	-61.02	-184.08	-184.17	0.61	-0.60	
4,741.00	3.65	251.29	4,735.08	-63.27	-189.77	-189.86	0.39	-0.09	
4,835.00	3.56	249.53	4,828.89	-65.25	-195.34	-195.44	0.15	-0.10	
4,930.00	3.43	249.70	4,923.72	-67.27	-200.77	-200.87	0.14	-0.14	
5,024.00	3.60	251.99	5,017.54	-69.16	-206.21	-206.31	0.23	0.18	
5,119.00	3.69	257.09	5,112.35	-70.76	-212.03	-212.13	0.35	0.09	
5,214.00	2.73	260.16	5,207.20	-71.83	-217.24	-217.34	1.03	-1.01	
5,309.00	2.07	269.57	5,302.11	-72.23	-221.18	-221.29	0.81	-0.69	
5,403.00	1.93	276.60	5,396.06	-72.06	-224.45	-224.56	0.30	-0.15	
5,497.00	1.85	272.03	5,490.00	-71.83	-227.54	-227.65	0.18	-0.09	
5,592.00	1.71	269.66	5,584.96	-71.78	-230.49	-230.60	0.17	-0.15	
5,686.00	1.67	273.26	5,678.92	-71.71	-233.26	-233.37	0.12	-0.04	
5,780.00	2.33	258.32	5,772.86	-72.02	-236.50	-236.61	0.89	0.70	

Survey Report

Company:	Crestone Peak Resources	Local Co-ordinate Reference:	Well SAM 3H-25H-M166
Project:	DJ BASIN	TVD Reference:	23' KB @ 5109.00usft
Site:	S25-T1N-R66W (SAM)	MD Reference:	23' KB @ 5109.00usft
Well:	SAM 3H-25H-M166	North Reference:	True
Wellbore:	OH	Survey Calculation Method:	Minimum Curvature
Design:	FINAL	Database:	USA EDM 5000 Multi Users DB

Survey									
Measured Depth (usft)	Inclination (°)	Azimuth (°)	Vertical Depth (usft)	+N/-S (usft)	+E/-W (usft)	Vertical Section (usft)	Dogleg Rate (°/100usf)	Build Rate (°/100u)	Formations / Comments
5,875.00	2.07	252.43	5,867.79	-72.93	-240.03	-240.13	0.36	-0.27	
5,970.00	3.43	245.13	5,962.68	-74.64	-244.24	-244.35	1.48	1.43	
6,065.00	2.73	238.98	6,057.54	-77.00	-248.76	-248.87	0.81	-0.74	
6,159.00	1.89	243.29	6,151.47	-78.85	-252.06	-252.18	0.91	-0.89	
6,254.00	1.49	227.82	6,246.42	-80.39	-254.38	-254.49	0.64	-0.42	
6,349.00	1.67	198.38	6,341.39	-82.53	-255.73	-255.85	0.86	0.19	
6,443.00	2.42	221.58	6,435.33	-85.31	-257.48	-257.60	1.17	0.80	
6,537.00	2.51	215.25	6,529.24	-88.48	-259.98	-260.11	0.30	0.10	
6,632.00	2.11	211.74	6,624.17	-91.67	-262.10	-262.24	0.45	-0.42	
6,727.00	2.20	209.19	6,719.10	-94.75	-263.91	-264.05	0.14	0.09	
6,821.00	1.98	198.29	6,813.04	-97.86	-265.30	-265.45	0.48	-0.23	
6,916.00	3.56	133.95	6,907.94	-101.47	-263.69	-263.84	3.41	1.66	
7,010.00	13.62	104.51	7,000.80	-106.28	-250.84	-251.00	11.34	10.70	
7,104.00	22.76	98.44	7,090.01	-111.73	-222.07	-222.24	9.92	9.72	
7,199.00	36.30	103.01	7,172.49	-120.81	-176.28	-176.46	14.44	14.25	
7,294.00	42.10	96.51	7,246.11	-130.76	-117.16	-117.36	7.47	6.11	
7,387.00	40.52	87.99	7,316.02	-133.24	-55.95	-56.14	6.28	-1.70	
7,482.00	43.86	85.70	7,386.40	-129.69	7.74	7.55	3.87	3.52	
7,577.00	55.15	88.78	7,448.00	-126.38	79.77	79.59	12.13	11.88	
7,672.00	66.71	93.87	7,494.11	-128.50	162.60	162.41	13.03	12.17	
7,679.77	67.11	93.78	7,497.15	-128.98	169.73	169.54	5.24	5.14	TPZ - 7679.77' MD (1213 FSL, 480 FWL)
7,766.00	71.54	92.82	7,527.59	-133.61	250.25	250.05	5.24	5.14	
7,861.00	75.19	91.50	7,554.78	-137.03	341.19	340.99	4.07	3.84	
7,956.00	78.49	89.30	7,576.41	-137.66	433.68	433.47	4.14	3.47	
8,050.00	83.54	89.22	7,591.09	-136.46	526.49	526.28	5.37	5.37	
8,145.00	86.79	88.51	7,599.09	-134.59	621.12	620.92	3.50	3.42	
8,239.00	87.67	89.22	7,603.64	-132.73	714.99	714.79	1.20	0.94	
8,333.00	87.98	88.25	7,607.21	-130.65	808.90	808.70	1.08	0.33	
8,428.00	90.00	88.42	7,608.88	-127.89	903.84	903.65	2.13	2.13	
8,522.00	90.92	88.42	7,608.12	-125.30	997.80	997.61	0.98	0.98	
8,617.00	91.23	87.81	7,606.34	-122.18	1,092.73	1,092.55	0.72	0.33	
8,711.00	90.40	87.55	7,605.01	-118.37	1,186.64	1,186.46	0.93	-0.88	
8,805.00	90.92	87.19	7,603.92	-114.06	1,280.53	1,280.36	0.67	0.55	
8,901.00	89.12	87.37	7,603.89	-109.51	1,376.42	1,376.26	1.88	-1.87	
8,995.00	88.24	88.86	7,606.05	-106.41	1,470.34	1,470.18	1.84	-0.94	
9,090.00	88.59	88.60	7,608.68	-104.31	1,565.28	1,565.13	0.46	0.37	
9,185.00	88.86	88.16	7,610.80	-101.62	1,660.22	1,660.07	0.54	0.28	
9,279.00	89.43	88.07	7,612.20	-98.53	1,754.16	1,754.01	0.61	0.61	
9,375.00	89.69	87.99	7,612.94	-95.23	1,850.10	1,849.96	0.28	0.27	
9,469.00	89.91	90.45	7,613.26	-93.95	1,944.08	1,943.94	2.63	0.23	
9,564.00	90.22	89.74	7,613.16	-94.11	2,039.08	2,038.94	0.82	0.33	
9,658.00	90.75	89.39	7,612.36	-93.40	2,133.08	2,132.93	0.68	0.56	
9,752.00	90.09	91.94	7,611.67	-94.49	2,227.06	2,226.92	2.80	-0.70	
9,846.00	89.74	90.89	7,611.81	-96.81	2,321.03	2,320.88	1.18	-0.37	
9,941.00	89.60	90.09	7,612.36	-97.62	2,416.02	2,415.87	0.85	-0.15	
10,036.00	89.69	92.29	7,612.95	-99.59	2,510.99	2,510.84	2.32	0.09	
10,130.00	91.80	91.85	7,611.72	-102.99	2,604.92	2,604.76	2.29	2.24	
10,225.00	92.37	92.20	7,608.27	-106.34	2,699.80	2,699.64	0.70	0.60	
10,320.00	91.14	91.15	7,605.36	-109.12	2,794.71	2,794.54	1.70	-1.29	
10,415.00	91.98	90.62	7,602.77	-110.59	2,889.66	2,889.49	1.05	0.88	
10,509.00	92.29	90.09	7,599.27	-111.17	2,983.59	2,983.43	0.65	0.33	
10,604.00	92.02	88.95	7,595.70	-110.37	3,078.52	3,078.35	1.23	-0.28	
10,699.00	92.24	87.99	7,592.17	-107.84	3,173.42	3,173.26	1.04	0.23	

Survey Report

Company:	Crestone Peak Resources	Local Co-ordinate Reference:	Well SAM 3H-25H-M166
Project:	DJ BASIN	TVD Reference:	23' KB @ 5109.00usft
Site:	S25-T1N-R66W (SAM)	MD Reference:	23' KB @ 5109.00usft
Well:	SAM 3H-25H-M166	North Reference:	True
Wellbore:	OH	Survey Calculation Method:	Minimum Curvature
Design:	FINAL	Database:	USA EDM 5000 Multi Users DB

Survey									
Measured Depth (usft)	Inclination (°)	Azimuth (°)	Vertical Depth (usft)	+N/-S (usft)	+E/-W (usft)	Vertical Section (usft)	Dogleg Rate (°/100usf)	Build Rate (°/100u)	Formations / Comments
10,794.00	89.25	89.13	7,590.93	-105.45	3,268.37	3,268.21	3.37	-3.15	
10,888.00	89.47	89.22	7,591.98	-104.10	3,362.35	3,362.20	0.25	0.23	
10,983.00	89.65	89.13	7,592.71	-102.73	3,457.34	3,457.19	0.21	0.19	
11,077.00	89.87	88.78	7,593.11	-101.02	3,551.32	3,551.17	0.44	0.23	
11,172.00	90.00	88.25	7,593.21	-98.55	3,646.29	3,646.14	0.57	0.14	
11,267.00	90.00	87.11	7,593.21	-94.71	3,741.21	3,741.07	1.20	0.00	
11,362.00	89.52	85.44	7,593.61	-88.54	3,836.01	3,835.87	1.83	-0.51	
11,456.00	90.04	88.16	7,593.97	-83.29	3,929.85	3,929.72	2.95	0.55	
11,551.00	89.43	90.71	7,594.41	-82.35	4,024.84	4,024.71	2.76	-0.64	
11,646.00	89.30	90.01	7,595.46	-82.95	4,119.83	4,119.70	0.75	-0.14	
11,740.00	89.52	89.74	7,596.43	-82.75	4,213.82	4,213.70	0.37	0.23	
11,834.00	90.00	89.13	7,596.83	-81.82	4,307.82	4,307.69	0.83	0.51	
11,929.00	90.53	88.95	7,596.39	-80.23	4,402.80	4,402.68	0.59	0.56	
11,962.00	90.92	89.04	7,595.97	-79.65	4,435.80	4,435.67	1.21	1.18	LAST SURVEY - 11962.00' MD
12,024.00	90.92	89.04	7,594.97	-78.61	4,497.78	4,497.66	0.00	0.00	PTB - 12024.00' MD (1257 FSL, 465 FEL)

Targets									
Target Name	Dip Angle (°)	Dip Dir. (°)	TVD (usft)	+N/-S (usft)	+E/-W (usft)	Northing (usft)	Easting (usft)	Latitude	Longitude
SAM 3H-25H PBHL - hit/miss target - Shape	0.00	0.51	7,600.00	-105.95	4,503.09	1,250,519.41	3,219,080.86	40.018410	-104.717776
- actual wellpath misses target center by 28.30usft at 12024.00usft MD (7594.97 TVD, -78.61 N, 4497.78 E)									
- Point									
SAM 3G-25H TPZ - hit/miss target - Shape	0.00	0.50	7,369.00	-22.57	169.73	1,250,565.34	3,214,746.94	40.018640	-104.733248
- actual wellpath misses target center by 154.95usft at 7614.91usft MD (7468.40 TVD, -126.32 N, 111.72 E)									
- Point									
SAM 3H 2834' TGT - hit/miss target - Shape	0.00	0.00	7,602.00	-108.49	2,834.00	1,250,502.45	3,217,411.85	40.018404	-104.723735
- actual wellpath misses target center by 2.80usft at 10359.35usft MD (7604.46 TVD, -109.83 N, 2834.05 E)									
- Point									
SAM 3G-25H PBHL - hit/miss target - Shape	0.00	0.51	7,376.00	103.88	4,503.90	1,250,729.23	3,219,079.85	40.018986	-104.717773
- actual wellpath misses target center by 285.11usft at 12024.00usft MD (7594.97 TVD, -78.61 N, 4497.78 E)									
- Point									
SAM 3H-25H TPZ - hit/miss target - Shape	0.00	0.50	7,602.00	-112.55	169.73	1,250,475.37	3,214,747.72	40.018393	-104.733248
- actual wellpath misses target center by 99.01usft at 7715.91usft MD (7510.67 TVD, -131.07 N, 203.18 E)									
- Point									

Design Annotations				
Measured Depth (usft)	Vertical Depth (usft)	Local Coordinates		Comment
		+N/-S (usft)	+E/-W (usft)	
7,679.77	7,497.15	-128.98	169.73	TPZ - 7679.77' MD (1213 FSL, 480 FWL)
11,962.00	7,595.97	-79.65	4,435.80	LAST SURVEY - 11962.00' MD
12,024.00	7,594.97	-78.61	4,497.78	PTB - 12024.00' MD (1257 FSL, 465 FEL)

Checked By: _____ Approved By: _____ Date: _____