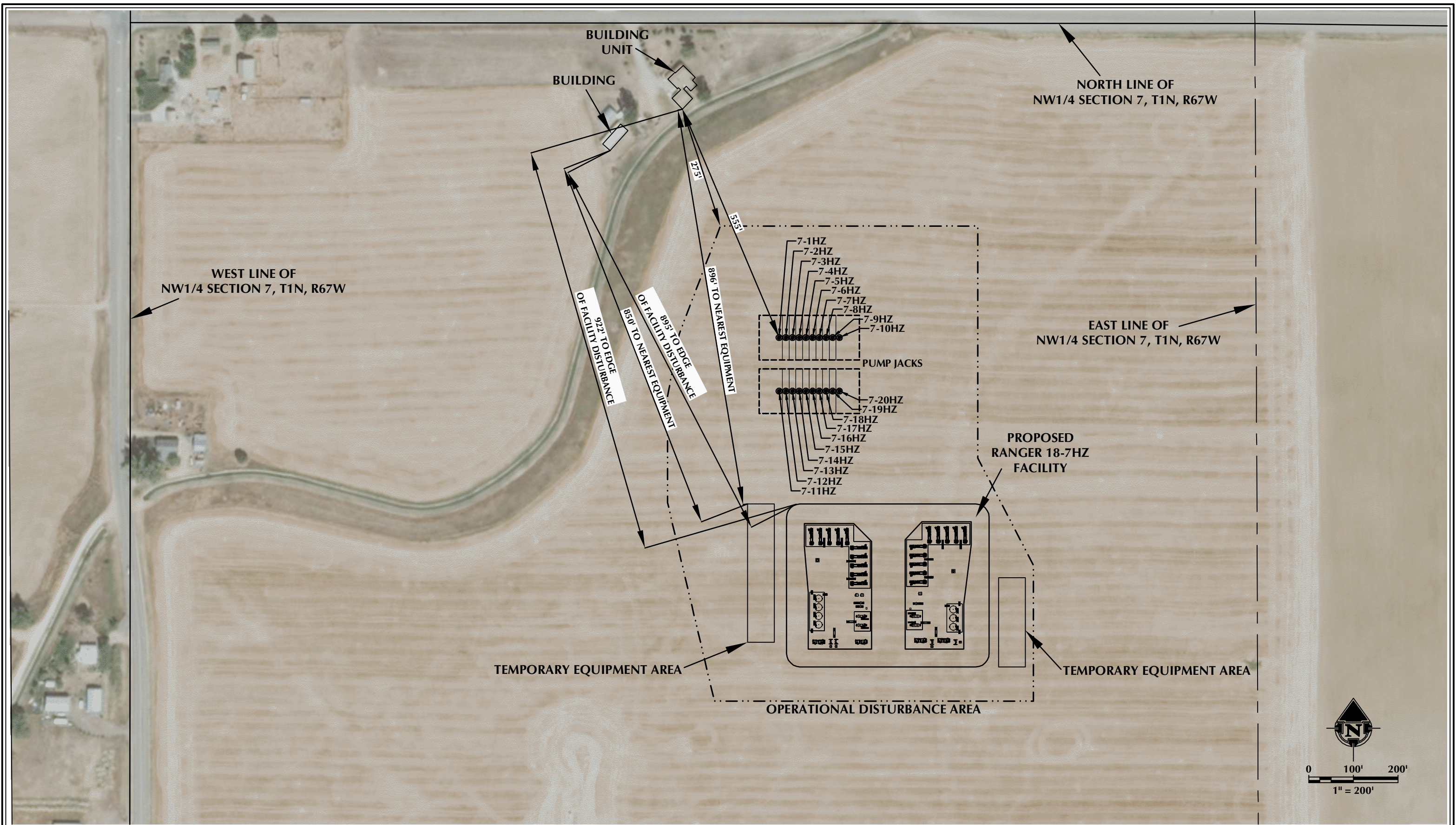


K:\AMADOR\2018\2018_183_LANDON_T1N_R67W_SEC_6\DWG\LONDON.dwg, 6/7/2018 9:22:26 AM, steven



NOTES: 1. EQUIPMENT PLACEMENT IS APPROXIMATE AND SUBJECT TO MINOR MODIFICATION DUE TO SPECIFIC CIRCUMSTANCES.	DATA SOURCES: - AERIAL COURTESY OF ESRI, INC.	 609 CONSULTING, LLC LOVELAND OFFICE 6706 North Franklin Avenue Loveland, Colorado 80538 Phone 970-776-4331 SHERIDAN OFFICE 1095 Saberton Avenue Sheridan, Wyoming 82801 Phone 307-674-0609	 Anadarko Petroleum Corporation 1099 18th Street Denver, CO 80202	SCALE: 1" = 200' DATE SURVEYED: 5/7/18 DATE: 6/7/18 DRAFTER: DD REVISED:	FACILITY LAYOUT AERIAL RANGER 18-7HZ LOCATED IN SECTION 7, T1N, R67W, 6TH P.M. WELD COUNTY, COLORADO
---	---	--	---	---	---

