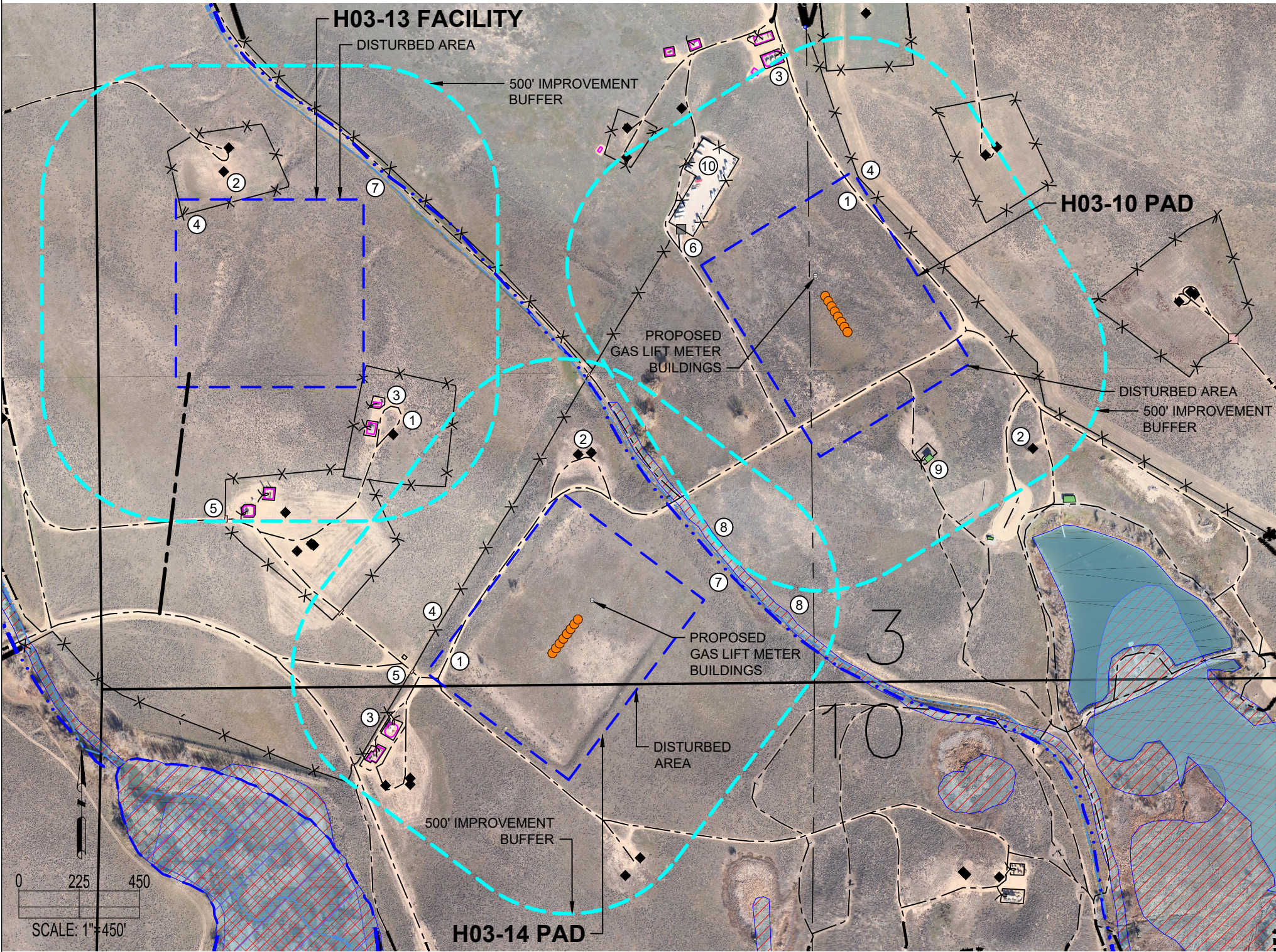


H03-13 FACILITY, H03-14 PAD, H03-10 PAD
LOCATION DRAWING



H03-13 FACILITY

IMPROVEMENTS: (AS MEASURED FROM THE PROPOSED EDGE OF DISTURBANCE)	
1. PRIVATE ROAD:	±116' SE, ±145' N, ±132' NE
2. OIL/GAS WELL:	±104' N, ±193' N, ±209' SE, ±468' S
3. EXISTING PRODUCTION EQUIPMENT (NOBLE):	±67' SE, ±133' SE, ±380' S, ±443' S
4. FENCE:	0' N, 0' SE, ±49' SE, ±100' N, ±125' S, ±155' NE, ±191' N, ±206' SE, ±306' S, ±345' S, ±374' S, ±438' S, ±458' S
5. CATTLE GUARD:	±480' S
6. GATE:	N/A
7. DITCH:	±109' NE (ACTUAL), ±124' NE (MAPPED)
8. WETLAND:	N/A
9. BUILDING:	N/A
10. PARKING LOT:	N/A
PROPERTY LINE:	N/A

H03-14 PAD

IMPROVEMENTS: (AS MEASURED FROM THE PROPOSED EDGE OF DISTURBANCE)	
1. PRIVATE ROAD:	±0' W, ±0' W, ±12' NW, ±32' SW, ±95' W, 199' SE, ±205' SW, ±252' NE, ±397' SW, ±468' SW
2. OIL/GAS WELL:	±155' N, ±180' N, ±351' SW, ±369' SW, ±395' SE, ±415' SE, ±428' SW
3. EXISTING PRODUCTION EQUIPMENT (NOBLE):	±223' SW, ±323' SW
4. FENCE:	±49' W, ±62' W, ±150' N, ±182' N, ±202' SW, ±316' SW, ±352' SW, ±360' W, ±367' W, ±393' SE, ±396' W, ±411' SE, ±414' SW, ±444' SW, ±462' N, ±475' N
5. CATTLE GUARD:	±45' W, ±385' W, ±429' SW, ±445' N
6. GATE:	N/A
7. DITCH:	±137' NE (MAPPED), ±146' NE (ACTUAL)
8. WETLAND:	±153' NE
9. BUILDING:	N/A
10. PARKING LOT:	N/A
PROPERTY LINE:	±121' NE, ±460' SW

H03-10 PAD

IMPROVEMENTS: (AS MEASURED FROM THE PROPOSED EDGE OF DISTURBANCE)	
1. PRIVATE ROAD:	±0' N, ±0' SE, ±0' SE, ±27' W, ±47' E, ±101' NW, ±227' SE, ±311' SE, ±425' SE (EQUESTRIAN TRACK WITH IMPLEMENTS), ±442' NE
2. OIL/GAS WELL:	±394' SE, ±453' NE, ±491' NW
3. EXISTING PRODUCTION EQUIPMENT (NOBLE):	±489' N
4. FENCE:	±7' NE, ±109' NW, ±147' NW, ±168' SE, ±321' NE, ±387' N, ±450' NW, ±451' NE, ±481' N, ±485' NW, ±495' E
5. CATTLE GUARD:	N/A
6. GATE:	±154' NW
7. DITCH:	N/A
8. WETLAND:	±489' SW
9. BUILDING:	±207' SE
10. PARKING LOT:	±109' NW
PROPERTY LINE:	±0', ±14' N

DISCLAIMER:
THIS PLOT DOES NOT REPRESENT A MONUMENTED LAND SURVEY AND SHOULD NOT BE RELIED UPON TO DETERMINE BOUNDARY LINES, PROPERTY OWNERSHIP OR OTHER PROPERTY INTERESTS. PARCEL LINES, IF DEPICTED HAVE NOT BEEN FIELD VERIFIED AND MAY BE BASED UPON PUBLICLY AVAILABLE DATA THAT ALSO HAS NOT BEEN INDEPENDENTLY VERIFIED.

CURRENT SURFACE USE: RECREATIONAL
FUTURE SURFACE USE: RECREATIONAL



FIELD DATE: 08-30-18	DRAWING DATE: 12-19-18
DRAWN BY: CLP	CHECKED BY: VQD

SITE NAME:
H03-13 FACILITY, H03-14 PAD, H03-10 PAD
SURFACE LOCATION:
SEC. 3, T3N, R65W, 6TH P.M.
WELD COUNTY, COLORADO

DATA SOURCE:
AERIAL IMAGERY: ASCENT 11/2017
WATER WELLS: COLORADO DWR
NHD: USGS

PUBLICLY AVAILABLE DATA SOURCES HAVE NOT BEEN INDEPENDENTLY VERIFIED BY ASCENT.

LEGEND:	
= PROPOSED WELL	= BUILDING
= EXISTING WELL	= CATTLE GUARD
= FENCE	= DITCH (MAPPED)
= EXISTING ROAD	= DITCH (ACTUAL)
= 500' RADIUS	= WETLAND
= EXISTING FACILITY	= MARSHLAND
= GATE	= POND
	= FLOODPLAIN
	= PROPOSED ACCESS ROAD
	= SECTION LINE
	= CENTER SECTION LINE

