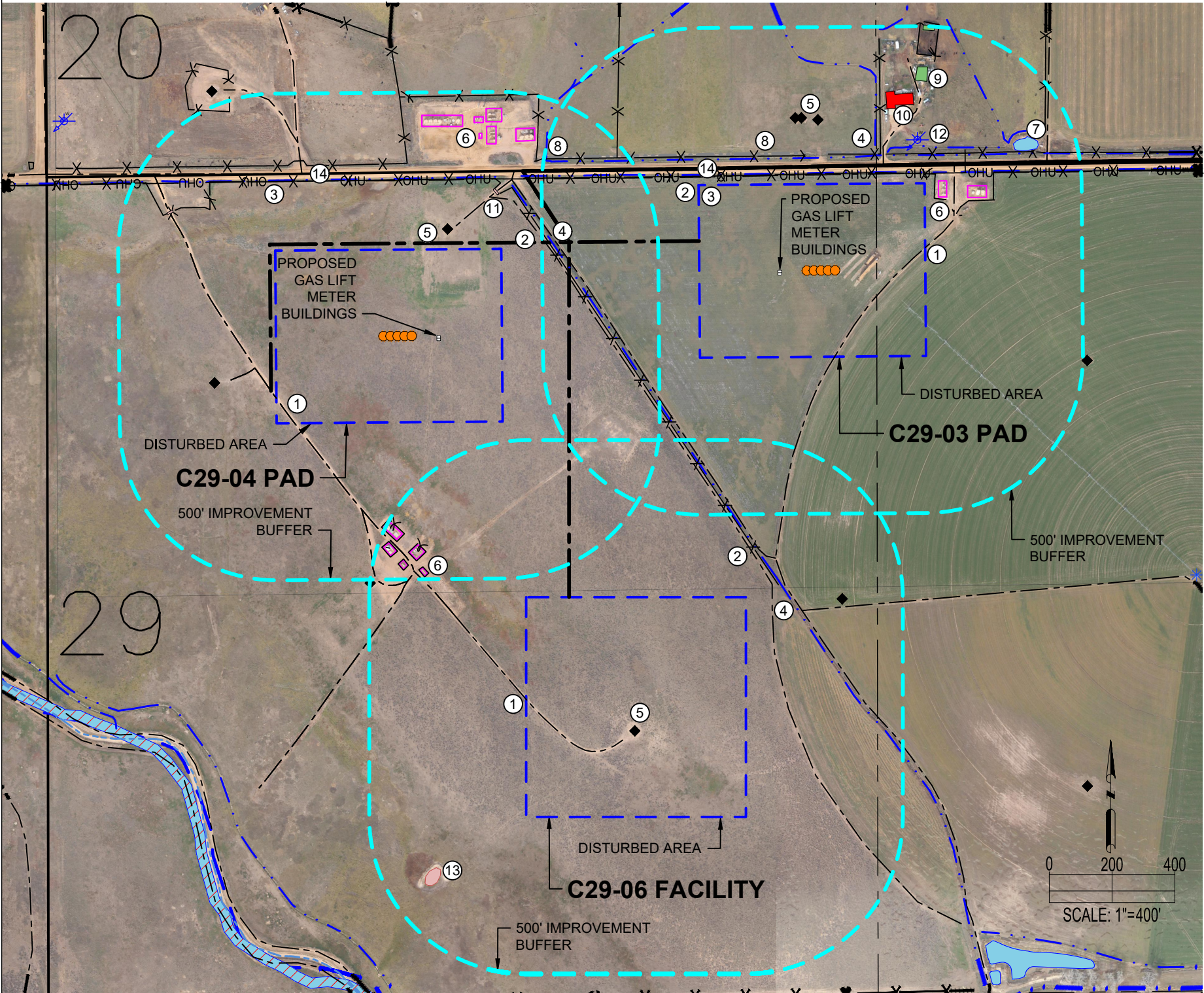


C29-04 PAD, C29-06 FACILITY & C29-03 PAD
LOCATION DRAWING



C29-03 PAD

IMPROVEMENTS: (AS MEASURED FROM THE PROPOSED EDGE OF DISTURBANCE)	
1. PRIVATE ROAD:	0', ±59' N, ±179' SW, ±206' SW, ±395' NE
2. FENCE:	±28' N, ±90' N, ±94' N, ±101' E, ±195' SW, ±273' NW, ±407' N, ±410' NE, ±417' NE
3. OVERHEAD UTILITY:	±25' N, ±134' NE
4. DITCH:	±32' N, ±81' N, ±122' NE, ±123' N, ±189' SW, ±290' NE, ±481' NW, ±492' N
5. OIL/GAS WELL:	±205' N, ±211' N, ±211' N
6. EXISTING PRODUCTION EQUIPMENT (NOBLE):	±44' E, ±137' E
7. POND:	±307' NE
8. CONCRETE DITCH:	±96' N, ±100' N
9. BUILDING:	±325' N, ±487' N
10. BUILDING UNIT:	±239' N
11. CATTLE GUARD:	N/A
12. WATER WELL:	±138' N
13. LOW LYING AREA:	N/A
14. PUBLIC ROAD:	±40' N
PROPERTY LINE:	0', ±53' N, ±56' N

C29-04 PAD

IMPROVEMENTS: (AS MEASURED FROM THE PROPOSED EDGE OF DISTURBANCE)	
1. PRIVATE ROAD:	0', ±56' N, ±68' W, ±124' NE, ±155' NE, ±245' N, ±276' S, ±322' NW, ±343' N, ±474' S
2. FENCE:	±137' NE, ±219' N, ±269' N, ±298' NE, ±308' S, ±379' S, ±386' S, ±435' S, ±461' S, ±466' NW, ±469' NE
3. OVERHEAD UTILITY:	±220' N
4. DITCH:	±146' NE, ±223' N, ±241' NE, ±316' NE
5. OIL/GAS WELL:	±64' N, ±197' W
6. EXISTING PRODUCTION EQUIPMENT (NOBLE):	±315' S, ±334' N, ±346' N, ±353' N, ±383' S, ±390' S, ±391' N, ±403' N, ±405' N, ±438' S, ±463' S
7. POND:	N/A
8. CONCRETE DITCH:	±325' NE
9. BUILDING:	N/A
10. BUILDING UNIT:	N/A
11. CATTLE GUARD:	±172' N, ±347' NW
12. WATER WELL:	N/A
13. LOW LYING AREA:	N/A
14. PUBLIC ROAD:	±233' N
PROPERTY LINE:	±244' N

C29-06 FACILITY

IMPROVEMENTS: (AS MEASURED FROM THE PROPOSED EDGE OF DISTURBANCE)	
1. PRIVATE ROAD:	0', ±84' E, ±130' NE, ±146' NE, ±179' E, ±368' NW, ±380' NW
2. FENCE:	±108' NE, ±320' NW, ±350' NW, ±388' NW, ±435' NW, ±437' NW, ±490' W
3. OVERHEAD UTILITY:	N/A
4. DITCH:	±116' NE
5. OIL/GAS WELL:	0', ±307' E, ±499' W
6. EXISTING PRODUCTION EQUIPMENT (NOBLE):	±322' NW, ±354' NW, ±391' NW, ±439' NW, ±443' NW
7. POND:	N/A
8. CONCRETE DITCH:	N/A
9. BUILDING:	N/A
10. BUILDING UNIT:	N/A
11. CATTLE GUARD:	N/A
12. WATER WELL:	N/A
13. LOW LYING AREA:	±320' SW
14. PUBLIC ROAD:	N/A
PROPERTY LINE:	±102' E

DISCLAIMER:
THIS PLOT DOES NOT REPRESENT A MONUMENTED LAND SURVEY AND SHOULD NOT BE RELIED UPON TO DETERMINE BOUNDARY LINES, PROPERTY OWNERSHIP OR OTHER PROPERTY INTERESTS. PARCEL LINES, IF DEPICTED HAVE NOT BEEN FIELD VERIFIED AND MAY BE BASED UPON PUBLICLY AVAILABLE DATA THAT ALSO HAS NOT BEEN INDEPENDENTLY VERIFIED.

C29-04 PAD & C29-06 FACILITY

CURRENT SURFACE USE: RANGELAND
FUTURE SURFACE USE: RANGELAND

C29-03 PAD

CURRENT SURFACE USE: DRY & IRRIGATED CROP
FUTURE SURFACE USE: DRY & IRRIGATED CROP



FIELD DATE: 08-31-18
DRAWING DATE: 12-11-18
DRAWN BY: JW
CHECKED BY: VQD

SITE NAME: C29-04 PAD, C29-06 FACILITY & C29-03 PAD
SURFACE LOCATION: SEC. 29, T4N, R64W, 6TH P.M. WELD COUNTY, COLORADO

DATA SOURCE: AERIAL IMAGERY: ASCENT 11/2017
WATER WELLS: COLORADO DWR
NHD: USGS
PUBLICLY AVAILABLE DATA SOURCES HAVE NOT BEEN INDEPENDENTLY VERIFIED BY ASCENT.

LEGEND:
= PROPOSED WELL
= EXISTING WELL
= FENCE
= OVERHEAD UTILITY

= BUILDING UNIT
= BUILDING
= PIVOT POINT
= WATER WELL

= DISTURBANCE AREA
= 500' RADIUS
= EXISTING FACILITY
= POND
= WETLAND

= EXISTING ROAD
= PROPOSED ACCESS ROAD
= CENTER SECTION LINE
= SECTION LINE
= LOW LYING AREA

= CANAL (ACTUAL)
= CANAL (MAPPED)
= CONCRETE DITCH
= DITCH

