

NOBLE ENERGY, INC

Location: COLORADO Slot: SLOT#42 HURLEY H26-736(2234'FNL&1042'FEL,SEC.26)
Field: WELD COUNTY (NOBLE NAD 83 GRID) Well: HURLEY H26-736
Facility: SEC.26-T03N-R65W Wellbore: HURLEY H26-736 PWB

Plot reference wellpath is HURLEY H26-736 (REV-B.0) PWP	Grid System: NAD83 / Lambert Colorado SP, Northern Zone (501), US feet
True vertical depths are referenced to RIG (30KB) (RKB)	* = Wellpath was transformed from a different geodetic datum
Measured depths are referenced to RIG (30KB) (RKB)	North Reference: Grid north
RIG (30KB) (RKB) to Mean Sea Level: 4884 feet	Scale: True distance
Mean Sea Level to Ground level (At Slot: SLOT#42 HURLEY H26-736(2234'FNL&1042'FEL,SEC.26)): 0 feet	Depths are in feet
Coordinates are in feet referenced to Slot	Created by: gualneri on 2018-08-08
	Database: WA_DEN_Denver_Defn

Survey Program

Start MD (ft)	End MD (ft)	Tool	Model	Log Name/Comment	Wellbore
30.00	16068.20	OWSG MWD rev2	OWSG MWD rev2 + IFR1 + Multi-Station Correction		HURLEY H26-736 PWB

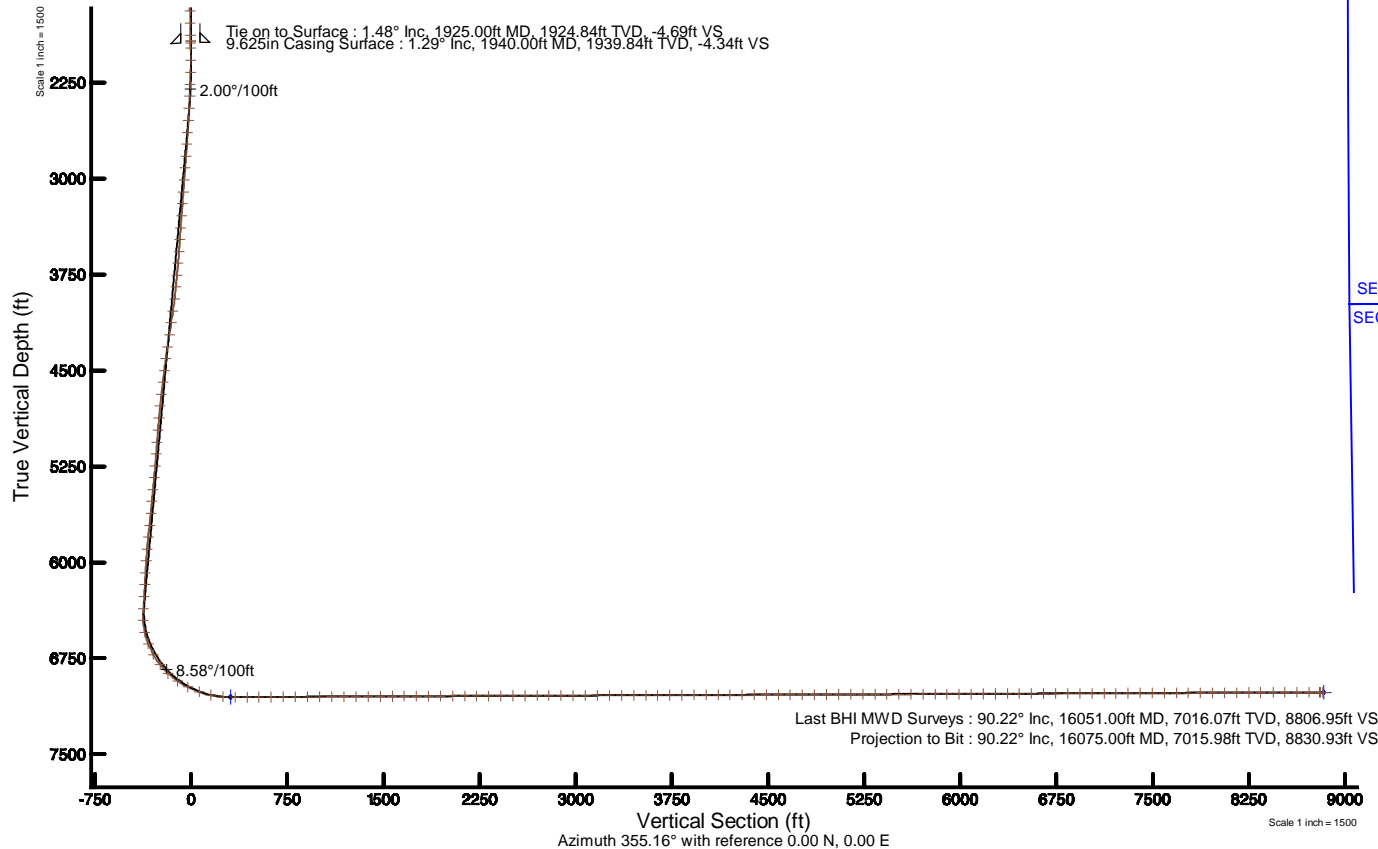
Comments

SURFACE LOCATION: SENE

40.19740N

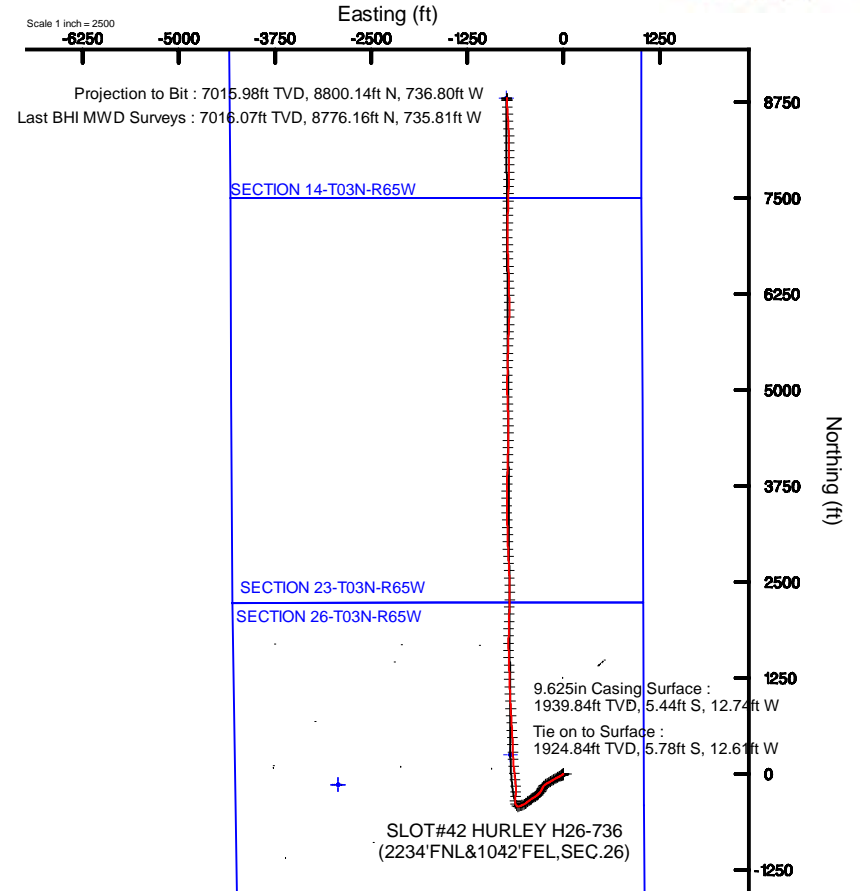
104.62492W

API: 05-123-46762



Location Information

Facility Name			Grid East (US ft)	Grid North (US ft)	Latitude	Longitude
SEC.26-T03N-R65W			3241514.116	1315823.443	40°11'49.560"N	104°38'07.476"W
Slot	Local N (ft)	Local E (ft)	Grid East (US ft)	Grid North (US ft)	Latitude	Longitude
SLOT#42 HURLEY H26-736(2234'FNL&1042'FEL,SEC.26)	138.03	2929.23	3244443.214	1315961.467	40°11'50.640"N	104°37'29.712"W
RIG (30KB) (RKB) to Ground level (At Slot: SLOT#42 HURLEY H26-736(2234'FNL&1042'FEL,SEC.26))					4884ft	
Mean Sea Level to Ground level (At Slot: SLOT#42 HURLEY H26-736(2234'FNL&1042'FEL,SEC.26))					0ft	
RIG (30KB) (RKB) to Mean Sea Level					4884ft	





Actual Wellpath Report

HURLEY H26-736 AWP

Page 1 of 9



REFERENCE WELLPATH IDENTIFICATION			
Operator	NOBLE ENERGY, INC	Slot	SLOT#42 HURLEY H26-736(2234'FNL&1042'FEL,SEC.26)
Area	COLORADO	Well	HURLEY H26-736
Field	WELD COUNTY (NOBLE NAD 83 GRID)	Wellbore	HURLEY H26-736 AWB
Facility	SEC.26-T03N-R65W		

REPORT SETUP INFORMATION			
Projection System	NAD83 / Lambert Colorado SP, Northern Zone (501), US feet	Software System	WellArchitect® 5.0
North Reference	Grid	User	Guenaler
Scale	0.999957	Report Generated	8/8/2018 at 9:55:08 AM
Convergence at slot	0.57° East	Database/Source file	WA_DEN_Denver_Defn/HURLEY_H26-736_AWP.xml

WELLPATH LOCATION						
	Local coordinates		Grid coordinates		Geographic coordinates	
	North[ft]	East[ft]	Easting[US ft]	Northing[US ft]	Latitude	Longitude
Slot Location	138.03	2929.23	3244443.21	1315961.47	40°11'50.640"N	104°37'29.712"W
Facility Reference Pt			3241514.12	1315823.44	40°11'49.560"N	104°38'07.476"W
Field Reference Pt			3000000.00	4454105.15	48°46'34.315"N	105°30'00.000"W

WELLPATH DATUM			
Calculation method	Minimum curvature	RIG (30'KB) (RKB) to Facility Vertical Datum	4884.00ft
Horizontal Reference Pt	Slot	RIG (30'KB) (RKB) to Mean Sea Level	4884.00ft
Vertical Reference Pt	RIG (30'KB) (RKB)	RIG (30'KB) (RKB) to Ground Level at Slot (SLOT#42 HURLEY H26-736 (2234'FNL&1042'FEL,SEC.26))	4884.00ft
MD Reference Pt	RIG (30'KB) (RKB)	Section Origin	N 0.00, E 0.00 ft
Field Vertical Reference	Mean Sea Level	Section Azimuth	355.16°



Actual Wellpath Report

HURLEY H26-736 AWP



REFERENCE WELLPATH IDENTIFICATION			
Operator	NOBLE ENERGY, INC	Slot	SLOT#42 HURLEY H26-736(2234'FNL&1042'FEL,SEC.26)
Area	COLORADO	Well	HURLEY H26-736
Field	WELD COUNTY (NOBLE NAD 83 GRID)	Wellbore	HURLEY H26-736 AWB
Facility	SEC.26-T03N-R65W		

WELLPATH DATA (173 stations)										
MD [ft]	Inclination [°]	Azimuth [°]	TVD [ft]	Vert Sect [ft]	North [ft]	East [ft]	Latitude	Longitude	DLS [°/100ft]	Comments
0.00	0.000	222.640	0.00	0.00	0.00	0.00	40°11'50.640"N	104°37'29.712"W	0.00	
85.00	0.130	222.640	85.00	-0.07	-0.07	-0.07	40°11'50.639"N	104°37'29.713"W	0.15	
181.00	0.380	248.220	181.00	-0.23	-0.27	-0.43	40°11'50.637"N	104°37'29.718"W	0.28	
273.00	0.170	261.110	273.00	-0.33	-0.40	-0.85	40°11'50.636"N	104°37'29.723"W	0.24	
368.00	0.220	206.990	368.00	-0.49	-0.59	-1.07	40°11'50.634"N	104°37'29.726"W	0.19	
462.00	0.280	204.660	462.00	-0.85	-0.96	-1.25	40°11'50.631"N	104°37'29.728"W	0.06	
557.00	0.340	180.210	557.00	-1.33	-1.45	-1.35	40°11'50.626"N	104°37'29.730"W	0.15	
651.00	0.220	211.800	650.99	-1.75	-1.88	-1.45	40°11'50.622"N	104°37'29.731"W	0.20	
745.00	0.300	273.830	744.99	-1.86	-2.02	-1.79	40°11'50.620"N	104°37'29.735"W	0.29	
840.00	0.120	149.050	839.99	-1.91	-2.09	-1.98	40°11'50.620"N	104°37'29.738"W	0.40	
934.00	0.340	168.030	933.99	-2.28	-2.45	-1.88	40°11'50.616"N	104°37'29.736"W	0.24	
1029.00	0.610	214.330	1028.99	-2.95	-3.14	-2.10	40°11'50.609"N	104°37'29.739"W	0.47	
1123.00	0.790	206.000	1122.98	-3.89	-4.13	-2.67	40°11'50.599"N	104°37'29.747"W	0.22	
1218.00	0.650	173.220	1217.97	-5.00	-5.26	-2.89	40°11'50.588"N	104°37'29.750"W	0.45	
1312.00	0.660	195.330	1311.97	-6.04	-6.31	-2.97	40°11'50.578"N	104°37'29.751"W	0.27	
1407.00	1.010	226.180	1406.96	-7.08	-7.42	-3.72	40°11'50.567"N	104°37'29.761"W	0.59	
1501.00	1.010	241.110	1500.94	-7.93	-8.39	-5.04	40°11'50.558"N	104°37'29.778"W	0.28	
1595.00	1.070	253.060	1594.93	-8.46	-9.05	-6.61	40°11'50.551"N	104°37'29.798"W	0.24	
1690.00	1.280	273.320	1689.91	-8.49	-9.24	-8.52	40°11'50.549"N	104°37'29.823"W	0.49	
1785.00	1.420	302.940	1784.88	-7.62	-8.54	-10.56	40°11'50.557"N	104°37'29.849"W	0.74	
1879.00	1.470	331.370	1878.86	-5.80	-6.85	-12.12	40°11'50.573"N	104°37'29.869"W	0.76	
1925.00	1.480	339.590	1924.84	-4.69	-5.78	-12.61	40°11'50.584"N	104°37'29.875"W	0.46	Tie on to Surface
1981.00	0.780	337.980	1980.83	-3.63	-4.74	-13.00	40°11'50.594"N	104°37'29.880"W	1.25	
2075.00	0.030	353.190	2074.83	-2.99	-4.13	-13.25	40°11'50.601"N	104°37'29.883"W	0.80	
2170.00	1.790	225.380	2169.81	-3.92	-5.14	-14.31	40°11'50.591"N	104°37'29.897"W	1.90	
2264.00	3.310	226.980	2263.72	-6.54	-8.03	-17.34	40°11'50.562"N	104°37'29.936"W	1.62	
2359.00	4.930	228.460	2358.47	-10.67	-12.61	-22.40	40°11'50.518"N	104°37'30.002"W	1.71	
2453.00	6.170	233.520	2452.02	-15.73	-18.29	-29.48	40°11'50.462"N	104°37'30.094"W	1.42	
2548.00	7.290	236.020	2546.37	-21.35	-24.69	-38.59	40°11'50.400"N	104°37'30.212"W	1.22	
2642.00	10.240	243.710	2639.26	-27.31	-31.73	-51.02	40°11'50.331"N	104°37'30.374"W	3.37	



Actual Wellpath Report
HURLEY H26-736 AWP
Page 3 of 9



REFERENCE WELLPATH IDENTIFICATION			
Operator	NOBLE ENERGY, INC	Slot	SLOT#42 HURLEY H26-736(2234'FNL&1042'FEL,SEC.26)
Area	COLORADO	Well	HURLEY H26-736
Field	WELD COUNTY (NOBLE NAD 83 GRID)	Wellbore	HURLEY H26-736 AWB
Facility	SEC.26-T03N-R65W		

WELLPATH DATA (173 stations)										
MD [ft]	Inclination [°]	Azimuth [°]	TVD [ft]	Vert Sect [ft]	North [ft]	East [ft]	Latitude	Longitude	DLS [°/100ft]	Comments
2737.00	10.320	245.310	2732.74	-33.28	-39.02	-66.33	40°11'50.261"N	104°37'30.572"W	0.31	
2831.00	10.280	240.510	2825.23	-39.64	-46.67	-81.28	40°11'50.187"N	104°37'30.765"W	0.91	
2926.00	10.290	237.520	2918.70	-47.11	-55.40	-95.81	40°11'50.102"N	104°37'30.954"W	0.56	
3020.00	9.800	241.100	3011.26	-54.26	-63.77	-109.90	40°11'50.021"N	104°37'31.136"W	0.84	
3115.00	10.200	242.090	3104.82	-60.86	-71.62	-124.41	40°11'49.944"N	104°37'31.324"W	0.46	
3210.00	10.350	241.780	3198.29	-67.54	-79.59	-139.36	40°11'49.867"N	104°37'31.518"W	0.17	
3304.00	9.390	236.410	3290.90	-74.58	-87.83	-153.19	40°11'49.787"N	104°37'31.697"W	1.41	
3399.00	9.590	240.210	3384.60	-81.64	-96.05	-166.52	40°11'49.707"N	104°37'31.870"W	0.69	
3493.00	10.370	243.600	3477.18	-88.05	-103.70	-180.89	40°11'49.633"N	104°37'32.056"W	1.04	
3588.00	10.540	243.080	3570.60	-94.46	-111.43	-196.30	40°11'49.558"N	104°37'32.256"W	0.20	
3682.00	10.560	236.120	3663.02	-101.87	-120.13	-211.11	40°11'49.474"N	104°37'32.448"W	1.36	
3777.00	10.560	237.260	3756.41	-110.17	-129.69	-225.66	40°11'49.380"N	104°37'32.636"W	0.22	
3871.00	10.520	233.920	3848.82	-118.65	-139.40	-239.84	40°11'49.286"N	104°37'32.820"W	0.65	
3966.00	10.710	224.380	3942.21	-128.91	-150.82	-253.03	40°11'49.174"N	104°37'32.992"W	1.86	
4060.00	10.650	212.590	4034.59	-141.51	-164.38	-263.82	40°11'49.041"N	104°37'33.132"W	2.32	
4155.00	9.950	203.280	4128.06	-155.72	-179.32	-271.79	40°11'48.895"N	104°37'33.237"W	1.90	
4249.00	9.620	204.940	4220.70	-169.70	-193.90	-278.31	40°11'48.751"N	104°37'33.323"W	0.46	
4344.00	9.970	208.890	4314.31	-183.43	-208.30	-285.63	40°11'48.610"N	104°37'33.419"W	0.80	
4438.00	9.410	211.560	4406.97	-196.38	-221.97	-293.58	40°11'48.475"N	104°37'33.523"W	0.76	
4533.00	9.120	216.410	4500.73	-208.30	-234.65	-302.12	40°11'48.351"N	104°37'33.635"W	0.88	
4628.00	10.460	222.310	4594.35	-219.82	-247.08	-312.39	40°11'48.229"N	104°37'33.769"W	1.76	
4722.00	10.200	222.760	4686.83	-231.23	-259.50	-323.79	40°11'48.107"N	104°37'33.917"W	0.29	
4816.00	10.270	228.890	4779.33	-241.80	-271.12	-335.75	40°11'47.994"N	104°37'34.073"W	1.16	
4911.00	7.570	227.280	4873.18	-250.66	-280.94	-346.73	40°11'47.898"N	104°37'34.216"W	2.85	
5006.00	9.660	234.240	4967.10	-258.59	-289.84	-357.80	40°11'47.811"N	104°37'34.359"W	2.45	
5100.00	10.510	241.990	5059.65	-266.02	-298.48	-371.77	40°11'47.727"N	104°37'34.541"W	1.70	
5195.00	10.460	240.830	5153.07	-272.98	-306.75	-386.95	40°11'47.647"N	104°37'34.737"W	0.23	
5289.00	10.540	238.470	5245.49	-280.36	-315.41	-401.73	40°11'47.562"N	104°37'34.929"W	0.47	
5384.00	10.370	232.520	5338.92	-288.87	-325.15	-415.92	40°11'47.468"N	104°37'35.113"W	1.15	
5478.00	10.470	234.740	5431.37	-297.76	-335.23	-429.61	40°11'47.369"N	104°37'35.291"W	0.44	



Actual Wellpath Report

HURLEY H26-736 AWP



REFERENCE WELLPATH IDENTIFICATION			
Operator	NOBLE ENERGY, INC	Slot	SLOT#42 HURLEY H26-736(2234'FNL&1042'FEL,SEC.26)
Area	COLORADO	Well	HURLEY H26-736
Field	WELD COUNTY (NOBLE NAD 83 GRID)	Wellbore	HURLEY H26-736 AWB
Facility	SEC.26-T03N-R65W		

WELLPATH DATA (173 stations)										
MD [ft]	Inclination [°]	Azimuth [°]	TVD [ft]	Vert Sect [ft]	North [ft]	East [ft]	Latitude	Longitude	DLS [°/100ft]	Comments
5573.00	10.520	235.480	5524.78	-306.42	-345.13	-443.80	40°11'47.273"N	104°37'35.475"W	0.15	
5667.00	10.420	234.540	5617.21	-315.00	-354.92	-457.79	40°11'47.177"N	104°37'35.656"W	0.21	
5762.00	10.530	227.410	5710.64	-324.69	-365.78	-471.18	40°11'47.071"N	104°37'35.830"W	1.37	
5856.00	10.360	231.000	5803.08	-334.69	-376.92	-484.07	40°11'46.963"N	104°37'35.998"W	0.72	
5951.00	10.440	237.820	5896.52	-343.44	-386.88	-498.00	40°11'46.866"N	104°37'36.178"W	1.30	
6045.00	10.470	244.430	5988.96	-350.37	-395.10	-512.91	40°11'46.786"N	104°37'36.372"W	1.28	
6140.00	10.560	247.840	6082.37	-356.02	-402.11	-528.76	40°11'46.718"N	104°37'36.577"W	0.66	
6234.00	10.440	250.370	6174.80	-360.76	-408.22	-544.76	40°11'46.659"N	104°37'36.784"W	0.51	
6329.00	10.410	245.500	6268.23	-365.84	-414.67	-560.68	40°11'46.597"N	104°37'36.990"W	0.93	
6423.00	8.790	241.380	6360.91	-371.59	-421.63	-574.71	40°11'46.530"N	104°37'37.171"W	1.87	
6518.00	11.160	273.470	6454.54	-373.19	-424.55	-590.27	40°11'46.502"N	104°37'37.372"W	6.26	
6612.00	16.320	313.610	6546.01	-361.96	-414.87	-608.97	40°11'46.600"N	104°37'37.612"W	11.21	
6707.00	22.540	342.280	6635.76	-334.13	-388.23	-624.22	40°11'46.864"N	104°37'37.805"W	11.80	
6801.00	28.820	1.490	6720.58	-293.94	-348.31	-629.13	40°11'47.259"N	104°37'37.863"W	11.02	
6896.00	38.770	6.850	6799.44	-241.91	-295.75	-624.98	40°11'47.778"N	104°37'37.803"W	10.92	
6990.00	46.890	2.700	6868.34	-178.96	-232.13	-619.84	40°11'48.407"N	104°37'37.729"W	9.14	
7085.00	55.770	354.960	6927.69	-105.09	-158.16	-621.66	40°11'49.138"N	104°37'37.743"W	11.29	
7179.00	63.620	354.420	6975.09	-24.01	-77.41	-629.18	40°11'49.936"N	104°37'37.830"W	8.37	
7274.00	70.150	353.480	7012.36	63.30	9.42	-638.40	40°11'50.795"N	104°37'37.937"W	6.93	
7368.00	77.970	353.970	7038.16	153.59	99.20	-648.27	40°11'51.683"N	104°37'38.053"W	8.33	
7463.00	86.610	357.440	7050.90	247.62	192.97	-655.28	40°11'52.611"N	104°37'38.132"W	9.79	
7557.00	90.060	359.140	7053.63	341.42	286.87	-658.08	40°11'53.539"N	104°37'38.156"W	4.09	
7652.00	90.340	357.980	7053.30	436.25	381.84	-660.47	40°11'54.477"N	104°37'38.175"W	1.26	
7746.00	90.150	356.770	7052.89	530.18	475.74	-664.78	40°11'55.406"N	104°37'38.218"W	1.30	
7840.00	90.180	356.760	7052.62	624.14	569.59	-670.08	40°11'56.334"N	104°37'38.275"W	0.03	
7935.00	90.250	356.500	7052.27	719.11	664.43	-675.66	40°11'57.271"N	104°37'38.334"W	0.28	
8029.00	90.340	356.980	7051.78	813.07	758.27	-681.01	40°11'58.199"N	104°37'38.391"W	0.52	
8124.00	90.400	357.000	7051.17	908.02	853.14	-686.00	40°11'59.137"N	104°37'38.444"W	0.07	
8218.00	90.340	357.420	7050.56	1001.96	947.02	-690.57	40°12'00.065"N	104°37'38.491"W	0.45	
8313.00	90.400	357.280	7049.95	1096.89	1041.92	-694.97	40°12'01.003"N	104°37'38.535"W	0.16	



Actual Wellpath Report

HURLEY H26-736 AWP



REFERENCE WELLPATH IDENTIFICATION			
Operator	NOBLE ENERGY, INC	Slot	SLOT#42 HURLEY H26-736(2234'FNL&1042'FEL,SEC.26)
Area	COLORADO	Well	HURLEY H26-736
Field	WELD COUNTY (NOBLE NAD 83 GRID)	Wellbore	HURLEY H26-736 AWB
Facility	SEC.26-T03N-R65W		

WELLPATH DATA (173 stations)										
MD [ft]	Inclination [°]	Azimuth [°]	TVD [ft]	Vert Sect [ft]	North [ft]	East [ft]	Latitude	Longitude	DLS [°/100ft]	Comments
8407.00	90.310	357.550	7049.37	1190.81	1135.82	-699.20	40°12'01.932"N	104°37'38.578"W	0.30	
8502.00	90.180	358.020	7048.96	1285.71	1230.75	-702.88	40°12'02.870"N	104°37'38.613"W	0.51	
8597.00	90.280	358.170	7048.58	1380.58	1325.70	-706.03	40°12'03.809"N	104°37'38.642"W	0.19	
8691.00	90.180	357.770	7048.20	1474.47	1419.64	-709.36	40°12'04.737"N	104°37'38.673"W	0.44	
8786.00	90.370	358.440	7047.75	1569.34	1514.58	-712.51	40°12'05.676"N	104°37'38.701"W	0.73	
8880.00	90.340	359.150	7047.16	1663.15	1608.56	-714.48	40°12'06.605"N	104°37'38.715"W	0.76	
8975.00	90.370	0.000	7046.57	1757.87	1703.56	-715.19	40°12'07.543"N	104°37'38.712"W	0.90	
9069.00	90.250	1.030	7046.07	1851.45	1797.55	-714.34	40°12'08.472"N	104°37'38.689"W	1.10	
9163.00	90.220	1.420	7045.68	1944.92	1891.53	-712.33	40°12'09.400"N	104°37'38.651"W	0.42	
9258.00	90.180	1.740	7045.35	2039.33	1986.49	-709.71	40°12'10.339"N	104°37'38.606"W	0.34	
9353.00	90.280	1.580	7044.97	2133.71	2081.45	-706.96	40°12'11.277"N	104°37'38.558"W	0.20	
9447.00	90.000	2.110	7044.74	2227.07	2175.40	-703.93	40°12'12.205"N	104°37'38.507"W	0.64	
9541.00	90.400	1.370	7044.41	2320.45	2269.36	-701.08	40°12'13.133"N	104°37'38.458"W	0.89	
9636.00	90.310	359.970	7043.82	2415.01	2364.34	-699.97	40°12'14.071"N	104°37'38.432"W	1.48	
9730.00	90.370	358.330	7043.26	2508.78	2458.33	-701.36	40°12'15.000"N	104°37'38.438"W	1.75	
9824.00	90.280	358.010	7042.73	2602.64	2552.28	-704.37	40°12'15.929"N	104°37'38.465"W	0.35	
9919.00	90.250	357.390	7042.29	2697.55	2647.20	-708.18	40°12'16.867"N	104°37'38.502"W	0.65	
10013.00	90.280	356.930	7041.86	2791.49	2741.09	-712.84	40°12'17.795"N	104°37'38.550"W	0.49	
10108.00	90.120	357.190	7041.52	2886.44	2835.96	-717.71	40°12'18.733"N	104°37'38.601"W	0.32	
10202.00	90.370	357.790	7041.12	2980.36	2929.87	-721.82	40°12'19.662"N	104°37'38.642"W	0.69	
10297.00	90.250	358.470	7040.61	3075.23	3024.82	-724.92	40°12'20.600"N	104°37'38.670"W	0.73	
10391.00	90.220	358.640	7040.22	3169.06	3118.78	-727.30	40°12'21.529"N	104°37'38.689"W	0.18	
10485.00	90.120	357.570	7039.94	3262.94	3212.73	-730.40	40°12'22.458"N	104°37'38.717"W	1.14	
10580.00	90.180	357.880	7039.69	3357.84	3307.66	-734.17	40°12'23.396"N	104°37'38.753"W	0.33	
10674.00	90.250	358.770	7039.34	3451.69	3401.61	-736.92	40°12'24.325"N	104°37'38.777"W	0.95	
10769.00	90.150	359.540	7039.01	3546.46	3496.60	-738.32	40°12'25.264"N	104°37'38.783"W	0.82	
10863.00	90.340	0.890	7038.61	3640.09	3590.60	-737.97	40°12'26.192"N	104°37'38.766"W	1.45	
10957.00	90.280	1.110	7038.10	3733.60	3684.58	-736.33	40°12'27.121"N	104°37'38.733"W	0.24	
11052.00	90.090	1.360	7037.79	3828.07	3779.56	-734.28	40°12'28.059"N	104°37'38.695"W	0.33	
11146.00	90.310	1.400	7037.47	3921.51	3873.53	-732.02	40°12'28.988"N	104°37'38.654"W	0.24	



Actual Wellpath Report

HURLEY H26-736 AWP



REFERENCE WELLPATH IDENTIFICATION			
Operator	NOBLE ENERGY, INC	Slot	SLOT#42 HURLEY H26-736(2234'FNL&1042'FEL,SEC.26)
Area	COLORADO	Well	HURLEY H26-736
Field	WELD COUNTY (NOBLE NAD 83 GRID)	Wellbore	HURLEY H26-736 AWB
Facility	SEC.26-T03N-R65W		

WELLPATH DATA (173 stations)										
MD [ft]	Inclination [°]	Azimuth [°]	TVD [ft]	Vert Sect [ft]	North [ft]	East [ft]	Latitude	Longitude	DLS [°/100ft]	Comments
11241.00	90.120	1.610	7037.11	4015.93	3968.50	-729.52	40°12'29.926"N	104°37'38.610"W	0.30	
11336.00	90.280	1.870	7036.78	4110.30	4063.45	-726.64	40°12'30.864"N	104°37'38.560"W	0.32	
11430.00	90.280	2.050	7036.32	4203.64	4157.40	-723.42	40°12'31.792"N	104°37'38.507"W	0.19	
11525.00	90.180	1.690	7035.94	4297.99	4252.35	-720.32	40°12'32.730"N	104°37'38.455"W	0.39	
11619.00	90.400	0.930	7035.46	4391.44	4346.32	-718.18	40°12'33.658"N	104°37'38.415"W	0.84	
11713.00	90.220	359.960	7034.95	4485.04	4440.32	-717.45	40°12'34.587"N	104°37'38.394"W	1.05	
11808.00	90.280	359.180	7034.54	4579.76	4535.31	-718.16	40°12'35.526"N	104°37'38.391"W	0.82	
11902.00	90.310	358.590	7034.05	4673.56	4629.29	-719.99	40°12'36.454"N	104°37'38.403"W	0.63	
11997.00	90.220	358.000	7033.61	4768.41	4724.25	-722.81	40°12'37.393"N	104°37'38.427"W	0.63	
12091.00	90.150	357.180	7033.31	4862.33	4818.16	-726.77	40°12'38.321"N	104°37'38.466"W	0.88	
12186.00	90.180	358.210	7033.04	4957.23	4913.08	-730.59	40°12'39.260"N	104°37'38.503"W	1.08	
12281.00	90.310	359.540	7032.63	5052.03	5008.06	-732.45	40°12'40.198"N	104°37'38.515"W	1.41	
12375.00	90.150	0.430	7032.25	5145.69	5102.06	-732.48	40°12'41.127"N	104°37'38.504"W	0.96	
12469.00	90.220	1.170	7031.95	5239.24	5196.05	-731.16	40°12'42.056"N	104°37'38.475"W	0.79	
12564.00	90.220	1.600	7031.58	5333.67	5291.02	-728.87	40°12'42.994"N	104°37'38.433"W	0.45	
12658.00	90.310	2.120	7031.15	5427.03	5384.97	-725.82	40°12'43.922"N	104°37'38.382"W	0.56	
12753.00	90.220	1.860	7030.71	5521.35	5479.91	-722.52	40°12'44.860"N	104°37'38.328"W	0.29	
12847.00	90.120	1.470	7030.43	5614.75	5573.87	-719.79	40°12'45.788"N	104°37'38.280"W	0.43	
12941.00	90.220	2.320	7030.15	5708.10	5667.82	-716.68	40°12'46.716"N	104°37'38.228"W	0.91	
13036.00	90.150	2.550	7029.85	5802.33	5762.73	-712.64	40°12'47.654"N	104°37'38.164"W	0.25	
13130.00	90.310	2.100	7029.47	5895.59	5856.66	-708.83	40°12'48.582"N	104°37'38.103"W	0.51	
13224.00	90.180	1.750	7029.07	5988.94	5950.60	-705.67	40°12'49.510"N	104°37'38.051"W	0.40	
13319.00	90.310	359.850	7028.66	6083.47	6045.59	-704.35	40°12'50.448"N	104°37'38.022"W	2.00	
13414.00	90.180	359.320	7028.25	6178.19	6140.58	-705.03	40°12'51.387"N	104°37'38.018"W	0.57	
13508.00	90.340	358.580	7027.83	6271.98	6234.57	-706.76	40°12'52.316"N	104°37'38.029"W	0.81	
13603.00	90.220	358.510	7027.36	6366.81	6329.53	-709.17	40°12'53.254"N	104°37'38.048"W	0.15	
13697.00	90.310	358.730	7026.93	6460.64	6423.51	-711.43	40°12'54.183"N	104°37'38.065"W	0.25	
13792.00	90.180	358.300	7026.52	6555.47	6518.47	-713.89	40°12'55.122"N	104°37'38.085"W	0.47	
13887.00	90.310	358.010	7026.12	6650.34	6613.42	-716.95	40°12'56.060"N	104°37'38.112"W	0.33	
13981.00	90.400	357.950	7025.53	6744.23	6707.36	-720.27	40°12'56.989"N	104°37'38.143"W	0.12	



Actual Wellpath Report

HURLEY H26-736 AWP



REFERENCE WELLPATH IDENTIFICATION			
Operator	NOBLE ENERGY, INC	Slot	SLOT#42 HURLEY H26-736(2234'FNL&1042'FEL,SEC.26)
Area	COLORADO	Well	HURLEY H26-736
Field	WELD COUNTY (NOBLE NAD 83 GRID)	Wellbore	HURLEY H26-736 AWB
Facility	SEC.26-T03N-R65W		

WELLPATH DATA (173 stations)										
MD [ft]	Inclination [°]	Azimuth [°]	TVD [ft]	Vert Sect [ft]	North [ft]	East [ft]	Latitude	Longitude	DLS [°/100ft]	Comments
14076.00	90.099	357.900	7025.12	6839.12	6802.30	-723.71	40°12'57.927"N	104°37'38.175"W	0.32	
14170.00	90.340	357.360	7024.76	6933.03	6896.22	-727.59	40°12'58.856"N	104°37'38.213"W	0.63	
14264.00	90.280	0.100	7024.25	7026.83	6990.18	-729.68	40°12'59.784"N	104°37'38.228"W	2.92	
14359.00	90.180	1.260	7023.87	7121.39	7085.18	-728.55	40°13'00.723"N	104°37'38.202"W	1.23	
14453.00	90.340	1.600	7023.44	7214.83	7179.14	-726.20	40°13'01.651"N	104°37'38.159"W	0.40	
14548.00	90.220	1.170	7022.98	7309.26	7274.12	-723.91	40°13'02.590"N	104°37'38.118"W	0.47	
14642.00	90.340	1.700	7022.52	7402.70	7368.08	-721.55	40°13'03.518"N	104°37'38.076"W	0.58	
14737.00	90.400	1.500	7021.91	7497.10	7463.05	-718.90	40°13'04.456"N	104°37'38.029"W	0.22	
14832.00	90.150	1.770	7021.45	7591.49	7558.01	-716.19	40°13'05.394"N	104°37'37.982"W	0.39	
14926.00	90.280	1.860	7021.10	7684.85	7651.96	-713.21	40°13'06.322"N	104°37'37.932"W	0.17	
15020.00	90.340	1.110	7020.59	7778.28	7745.92	-710.78	40°13'07.250"N	104°37'37.889"W	0.80	
15115.00	90.310	0.860	7020.05	7872.79	7840.91	-709.14	40°13'08.189"N	104°37'37.856"W	0.27	
15210.00	90.250	0.450	7019.59	7967.35	7935.90	-708.06	40°13'09.127"N	104°37'37.830"W	0.44	
15304.00	90.340	0.430	7019.10	8060.95	8029.90	-707.34	40°13'10.056"N	104°37'37.808"W	0.10	
15398.00	90.370	359.570	7018.52	8154.61	8123.89	-707.34	40°13'10.985"N	104°37'37.796"W	0.92	
15493.00	90.250	358.990	7018.01	8249.36	8218.88	-708.53	40°13'11.924"N	104°37'37.800"W	0.62	
15587.00	90.120	358.030	7017.70	8343.20	8312.85	-710.97	40°13'12.853"N	104°37'37.819"W	1.03	
15682.00	90.340	356.930	7017.32	8438.12	8407.76	-715.15	40°13'13.791"N	104°37'37.861"W	1.18	
15776.00	89.970	356.080	7017.07	8532.09	8501.58	-720.88	40°13'14.718"N	104°37'37.923"W	0.99	
15871.00	90.280	356.590	7016.86	8627.07	8596.39	-726.95	40°13'15.656"N	104°37'37.989"W	0.63	
15965.00	90.250	357.280	7016.42	8721.02	8690.25	-731.98	40°13'16.584"N	104°37'38.042"W	0.73	
16051.00	90.220	357.620	7016.07	8806.95	8776.16	-735.81	40°13'17.433"N	104°37'38.081"W	0.40	Last BHI MWD Surveys
16075.00	90.220	357.620	7015.98	8830.93	8800.14	-736.80	40°13'17.670"N	104°37'38.090"W	0.00	Projection to Bit



Actual Wellpath Report

HURLEY H26-736 AWP

Page 8 of 9



REFERENCE WELLPATH IDENTIFICATION			
Operator	NOBLE ENERGY, INC	Slot	SLOT#42 HURLEY H26-736(2234'FNL&1042'FEL,SEC.26)
Area	COLORADO	Well	HURLEY H26-736
Field	WELD COUNTY (NOBLE NAD 83 GRID)	Wellbore	HURLEY H26-736 AWB
Facility	SEC.26-T03N-R65W		

HOLE & CASING SECTIONS - Ref Wellbore: HURLEY H26-736 AWB Ref Wellpath: HURLEY H26-736 AWP									
String/Diameter	Start MD [ft]	End MD [ft]	Interval [ft]	Start TVD [ft]	End TVD [ft]	Start N/S [ft]	Start E/W [ft]	End N/S [ft]	End E/W [ft]
13.5in Open Hole	30.00	1940.00	1910.00	30.00	1939.84	-0.01	-0.01	-5.44	-12.74
9.625in Casing Surface	30.00	1940.00	1910.00	30.00	1939.84	-0.01	-0.01	-5.44	-12.74
8.5in Open Hole	1940.00	16058.00	14118.00	1939.84	7016.04	-5.44	-12.74	8783.16	-736.10

TARGETS								
Name	TVD [ft]	North [ft]	East [ft]	Grid East [US ft]	Grid North [US ft]	Latitude	Longitude	Shape
SECTION 14-T03N-R65W	32.00	-138.03	-2929.23	3241514.12	1315823.44	40°11'49.560"N	104°38'07.476"W	polygon
SECTION 23-T03N-R65W	32.00	-138.03	-2929.23	3241514.12	1315823.44	40°11'49.560"N	104°38'07.476"W	polygon
SECTION 26-T03N-R65W	32.00	-138.03	-2929.23	3241514.12	1315823.44	40°11'49.560"N	104°38'07.476"W	polygon
HURLEY H26-736 REV-1 BHL(1300'FSL&1755'FEL,SEC.14)	7015.68	8801.85	-745.94	3243697.31	1324762.92	40°13'17.688"N	104°37'38.208"W	point
HURLEY H26-736 Landing Point	7053.00	250.00	-690.00	3243753.24	1316211.46	40°11'53.178"N	104°37'38.572"W	point

WELLPATH COMPOSITION - Ref Wellbore: HURLEY H26-736 AWB Ref Wellpath: HURLEY H26-736 AWP				
Start MD [ft]	End MD [ft]	Positional Uncertainty Model	Log Name/Comment	Wellbore
0.00	1925.00	Gyrodata standard - Drop gyro or Multi-shot	3rd Party Surface Surveys <85'-1925'>	HURLEY H26-736 AWB
1925.00	16051.00	OWSG MWD rev2 + IFR1 + Multi-Station Correction	BH/ATC 8.5" Hole OWSG MWD+IFR+MSA <1981'16051'>	HURLEY H26-736 AWB
16051.00	16075.00	Blind Drilling (std)	Projection to bit	HURLEY H26-736 AWB



Actual Wellpath Report

HURLEY H26-736 AWP

Page 9 of 9



REFERENCE WELLPATH IDENTIFICATION			
Operator	NOBLE ENERGY, INC	Slot	SLOT#42 HURLEY H26-736(2234'FNL&1042'FEL,SEC.26)
Area	COLORADO	Well	HURLEY H26-736
Field	WELD COUNTY (NOBLE NAD 83 GRID)	Wellbore	HURLEY H26-736 AWB
Facility	SEC.26-T03N-R65W		

WELLPATH COMMENTS				
MD [ft]	Inclination [°]	Azimuth [°]	TVD [ft]	Comment
1925.00	1.480	339.590	1924.84	Tie on to Surface
16051.00	90.220	357.620	7016.07	Last BHI MWD Surveys
16075.00	90.220	357.620	7015.98	Projection to Bit

COMMENTS
<div>Wellpath general comments</div> <div>SURFACE LOCATION: SENE</div> <div>40.19740N</div> <div>104.62492W</div> <div>API: 05-123-46762</div>