

# NOBLE ENERGY, INC

Location: COLORADO Slot: SLOT#41 HURLEY H26-730(2234'FNL&1019'FEL,SEC.26)  
Field: WELD COUNTY (NOBLE NAD 83 GRID) Well: HURLEY H26-730  
Facility: SEC.26-T03N-R65W Wellbore: HURLEY H26-730 PWB

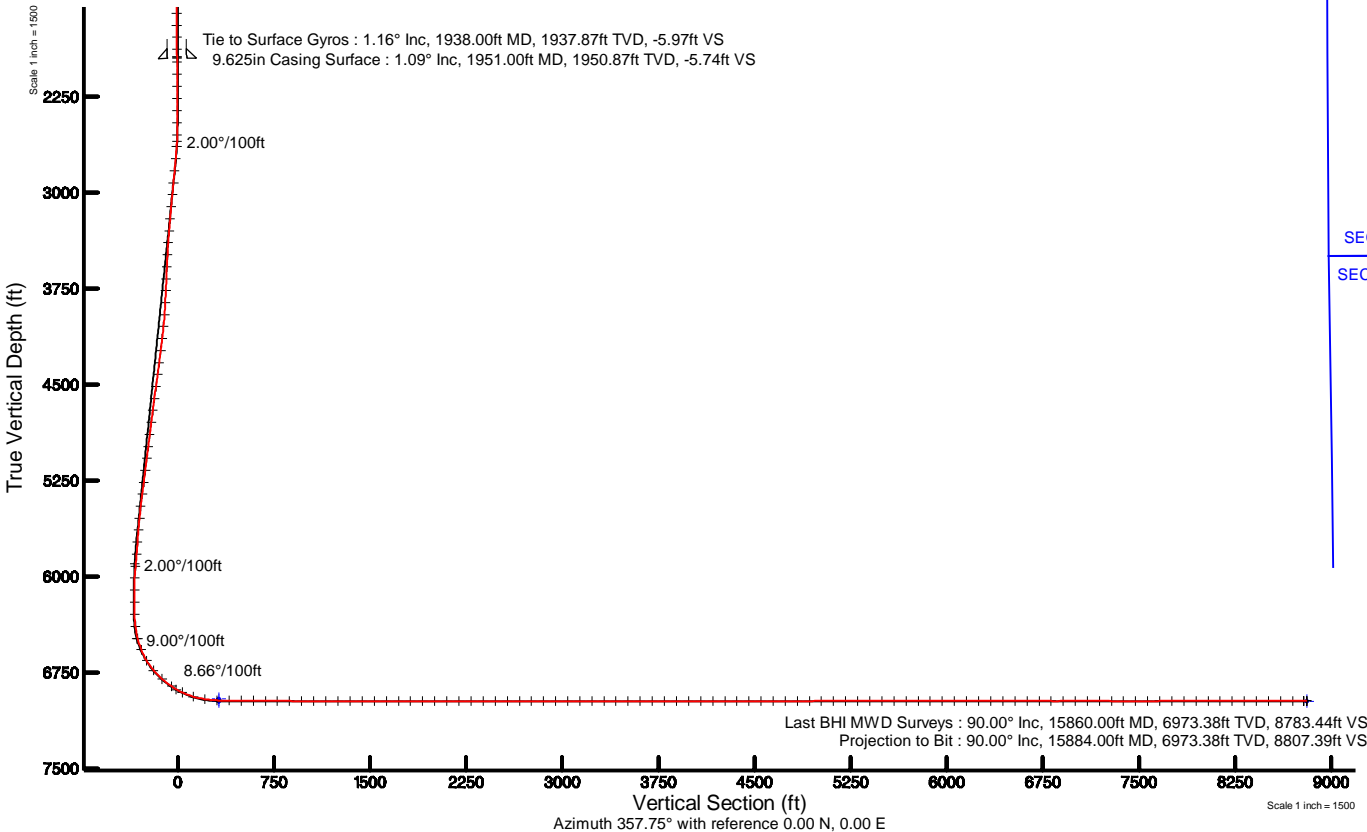
Plot reference wellpath is HURLEY H26-730 (REV-B.0) PWP	Grid System: NAD83 / Lambert Colorado SP, Northern Zone (501), US feet
True vertical depths are referenced to RIG (30KB) (RKB)	* = Wellpath was transformed from a different geodetic datum
Measured depths are referenced to RIG (30KB) (RKB)	North Reference: Grid north
RIG (30KB) (RKB) to Mean Sea Level: 4883 feet	Scale: True distance
Mean Sea Level to Ground level (At Slot: SLOT#41 HURLEY H26-730(2234'FNL&1019'FEL,SEC.26)): 0 feet	Depths are in feet
Coordinates are in feet referenced to Slot	Created by: guenaler on 2018-08-08
	Database: WA_DEN_Denver_Defn

## Survey Program

Start MD (ft)	End MD (ft)	Tool	Model	Log Name/Comment	Wellbore
30.00	15887.22	OWSG MWD rev2	OWSG MWD rev2 + IFR1 + Multi-Station Correction		HURLEY H26-730 PWB

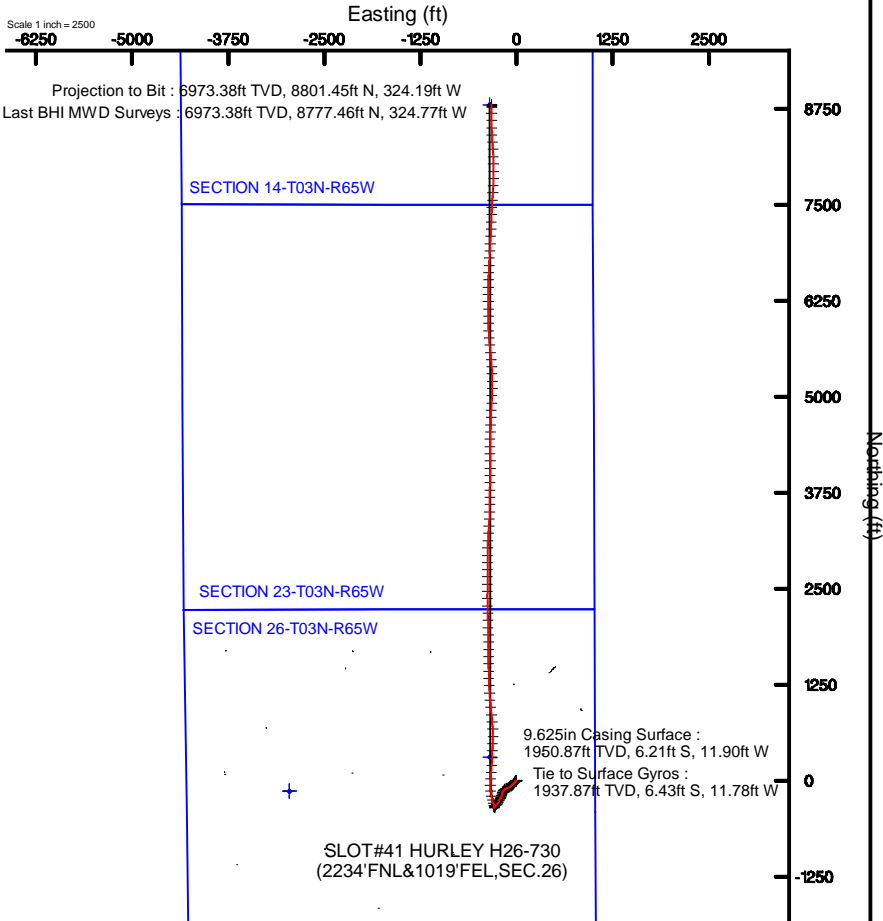
## Comments

SURFACE LOCATION: SENE  
40.19740N  
104.62484W  
API: 05-123-46763



## Location Information

Facility Name			Grid East (US ft)	Grid North (US ft)	Latitude	Longitude
SEC.26-T03N-R65W			3241514.116	1315823.443	40°11'49.560"N	104°38'07.476"W
Slot	Local N (ft)	Local E (ft)	Grid East (US ft)	Grid North (US ft)	Latitude	Longitude
SLOT#41 HURLEY H26-730(2234'FNL&1019'FEL,SEC.26)	138.25	2951.58	3244465.560	1315961.687	40°11'50.640"N	104°37'29.424"W
RIG (30KB) (RKB) to Ground level (At Slot: SLOT#41 HURLEY H26-730(2234'FNL&1019'FEL,SEC.26))					4883ft	
Mean Sea Level to Ground level (At Slot: SLOT#41 HURLEY H26-730(2234'FNL&1019'FEL,SEC.26))					0ft	
RIG (30KB) (RKB) to Mean Sea Level					4883ft	





Actual Wellpath Report

HURLEY H26-730 AWP

Page 1 of 10



REFERENCE WELLPATH IDENTIFICATION			
Operator	NOBLE ENERGY, INC	Slot	SLOT#41 HURLEY H26-730(2234'FNL&1019'FEL,SEC.26)
Area	COLORADO	Well	HURLEY H26-730
Field	WELD COUNTY (NOBLE NAD 83 GRID)	Wellbore	HURLEY H26-730 AWB
Facility	SEC.26-T03N-R65W		

REPORT SETUP INFORMATION			
Projection System	NAD83 / Lambert Colorado SP, Northern Zone (501), US feet	Software System	WellArchitect® 5.0
North Reference	Grid	User	Guenaler
Scale	0.999957	Report Generated	8/8/2018 at 9:52:31 AM
Convergence at slot	0.57° East	Database/Source file	WA_DEN_Denver_Defn/HURLEY_H26-730_AWP.xml

WELLPATH LOCATION						
	Local coordinates		Grid coordinates		Geographic coordinates	
	North[ft]	East[ft]	Easting[US ft]	Northing[US ft]	Latitude	Longitude
Slot Location	138.25	2951.58	3244465.56	1315961.69	40°11'50.640"N	104°37'29.424"W
Facility Reference Pt			3241514.12	1315823.44	40°11'49.560"N	104°38'07.476"W
Field Reference Pt			3000000.00	4454105.15	48°46'34.315"N	105°30'00.000"W

WELLPATH DATUM			
Calculation method	Minimum curvature	RIG (30'KB) (RKB) to Facility Vertical Datum	4883.00ft
Horizontal Reference Pt	Slot	RIG (30'KB) (RKB) to Mean Sea Level	4883.00ft
Vertical Reference Pt	RIG (30'KB) (RKB)	RIG (30'KB) (RKB) to Ground Level at Slot (SLOT#41 HURLEY H26-730 (2234'FNL&1019'FEL,SEC.26))	4883.00ft
MD Reference Pt	RIG (30'KB) (RKB)	Section Origin	N 0.00, E 0.00 ft
Field Vertical Reference	Mean Sea Level	Section Azimuth	357.75°



Actual Wellpath Report  
HURLEY H26-730 AWP  
Page 2 of 10



REFERENCE WELLPATH IDENTIFICATION			
Operator	NOBLE ENERGY, INC	Slot	SLOT#41 HURLEY H26-730(2234'FNL&1019'FEL,SEC.26)
Area	COLORADO	Well	HURLEY H26-730
Field	WELD COUNTY (NOBLE NAD 83 GRID)	Wellbore	HURLEY H26-730 AWB
Facility	SEC.26-T03N-R65W		

WELLPATH DATA (171 stations)										
MD [ft]	Inclination [°]	Azimuth [°]	TVD [ft]	Vert Sect [ft]	North [ft]	East [ft]	Latitude	Longitude	DLS [°/100ft]	Comments
0.00	0.000	106.250	0.00	0.00	0.00	0.00	40°11'50.640"N	104°37'29.424"W	0.00	
85.00	0.200	106.250	85.00	-0.05	-0.04	0.14	40°11'50.640"N	104°37'29.422"W	0.24	
181.00	0.260	166.560	181.00	-0.31	-0.30	0.35	40°11'50.637"N	104°37'29.419"W	0.25	
275.00	0.200	147.910	275.00	-0.67	-0.65	0.49	40°11'50.634"N	104°37'29.418"W	0.10	
370.00	0.370	292.440	370.00	-0.68	-0.67	0.30	40°11'50.633"N	104°37'29.420"W	0.57	
464.00	0.170	250.300	464.00	-0.60	-0.60	-0.12	40°11'50.634"N	104°37'29.426"W	0.29	
559.00	0.580	165.810	559.00	-1.11	-1.11	-0.13	40°11'50.629"N	104°37'29.426"W	0.62	
653.00	0.190	127.590	652.99	-1.67	-1.67	0.11	40°11'50.623"N	104°37'29.423"W	0.47	
748.00	0.310	208.110	747.99	-2.00	-1.99	0.11	40°11'50.620"N	104°37'29.423"W	0.35	
842.00	0.500	192.160	841.99	-2.61	-2.62	-0.09	40°11'50.614"N	104°37'29.426"W	0.23	
937.00	0.560	222.170	936.99	-3.35	-3.37	-0.49	40°11'50.607"N	104°37'29.431"W	0.30	
1031.00	0.510	244.280	1030.98	-3.84	-3.89	-1.18	40°11'50.602"N	104°37'29.440"W	0.22	
1126.00	0.530	223.010	1125.98	-4.32	-4.40	-1.86	40°11'50.597"N	104°37'29.449"W	0.20	
1220.00	0.670	211.530	1219.97	-5.08	-5.18	-2.44	40°11'50.589"N	104°37'29.456"W	0.20	
1315.00	0.800	228.070	1314.97	-5.97	-6.10	-3.23	40°11'50.580"N	104°37'29.466"W	0.26	
1409.00	0.710	217.300	1408.96	-6.83	-7.00	-4.07	40°11'50.571"N	104°37'29.477"W	0.18	
1504.00	0.580	225.610	1503.95	-7.61	-7.80	-4.77	40°11'50.563"N	104°37'29.486"W	0.17	
1598.00	1.040	247.200	1597.94	-8.23	-8.47	-5.89	40°11'50.557"N	104°37'29.501"W	0.58	
1693.00	1.340	264.520	1692.92	-8.59	-8.91	-7.79	40°11'50.553"N	104°37'29.526"W	0.49	
1787.00	1.180	299.430	1786.90	-8.15	-8.54	-9.73	40°11'50.557"N	104°37'29.550"W	0.82	
1882.00	1.100	321.740	1881.88	-6.90	-7.34	-11.15	40°11'50.569"N	104°37'29.569"W	0.47	
1938.00	1.160	328.740	1937.87	-5.97	-6.43	-11.78	40°11'50.578"N	104°37'29.577"W	0.27	Tie to Surface Gyros
1981.00	0.980	351.530	1980.86	-5.22	-5.70	-12.06	40°11'50.585"N	104°37'29.580"W	1.07	
2075.00	0.040	134.780	2074.86	-4.44	-4.93	-12.15	40°11'50.593"N	104°37'29.581"W	1.08	
2170.00	0.230	297.500	2169.86	-4.37	-4.86	-12.30	40°11'50.593"N	104°37'29.583"W	0.28	
2264.00	0.030	22.990	2263.86	-4.26	-4.75	-12.45	40°11'50.594"N	104°37'29.585"W	0.24	
2359.00	0.030	81.070	2358.86	-4.23	-4.73	-12.42	40°11'50.595"N	104°37'29.585"W	0.03	
2453.00	0.220	290.940	2452.86	-4.16	-4.66	-12.56	40°11'50.595"N	104°37'29.586"W	0.26	
2548.00	0.760	211.550	2547.86	-4.61	-5.13	-13.06	40°11'50.591"N	104°37'29.593"W	0.79	
2642.00	4.930	215.880	2641.72	-8.31	-8.93	-15.76	40°11'50.553"N	104°37'29.628"W	4.44	



Actual Wellpath Report

HURLEY H26-730 AWP

Page 3 of 10



REFERENCE WELLPATH IDENTIFICATION			
Operator	NOBLE ENERGY, INC	Slot	SLOT#41 HURLEY H26-730(2234'FNL&1019'FEL,SEC.26)
Area	COLORADO	Well	HURLEY H26-730
Field	WELD COUNTY (NOBLE NAD 83 GRID)	Wellbore	HURLEY H26-730 AWB
Facility	SEC.26-T03N-R65W		

WELLPATH DATA (171 stations)												
MD [ft]	Inclination [°]	Azimuth [°]	TVD [ft]	Vert Sect [ft]	North [ft]	East [ft]	Latitude		Longitude		DLS [°/100ft]	Comments
2737.00	7.270	220.400	2736.17	-15.94	-16.82	-22.05	40°11'50.476"N		104°37'29.710"W		2.51	
2831.00	7.190	218.750	2829.43	-24.75	-25.94	-29.58	40°11'50.387"N		104°37'29.809"W		0.24	
2926.00	7.240	219.390	2923.68	-33.71	-35.20	-37.10	40°11'50.296"N		104°37'29.907"W		0.10	
3020.00	7.340	222.050	3016.92	-42.44	-44.24	-44.89	40°11'50.207"N		104°37'30.008"W		0.37	
3115.00	7.390	223.360	3111.13	-51.05	-53.19	-53.14	40°11'50.120"N		104°37'30.116"W		0.18	
3210.00	7.510	225.620	3205.33	-59.49	-61.97	-61.78	40°11'50.034"N		104°37'30.228"W		0.33	
3304.00	7.440	228.530	3298.53	-67.46	-70.30	-70.73	40°11'49.952"N		104°37'30.344"W		0.41	
3399.00	7.350	232.690	3392.74	-74.84	-78.05	-80.17	40°11'49.877"N		104°37'30.467"W		0.57	
3493.00	6.540	243.250	3486.06	-80.51	-84.11	-89.73	40°11'49.818"N		104°37'30.591"W		1.61	
3588.00	8.100	250.690	3580.28	-84.72	-88.76	-100.88	40°11'49.773"N		104°37'30.735"W		1.92	
3682.00	7.990	246.870	3673.36	-88.99	-93.51	-113.14	40°11'49.727"N		104°37'30.894"W		0.58	
3777.00	7.980	250.300	3767.44	-93.32	-98.33	-125.42	40°11'49.681"N		104°37'31.053"W		0.50	
3871.00	8.120	250.620	3860.51	-97.23	-102.73	-137.82	40°11'49.638"N		104°37'31.213"W		0.16	
3966.00	8.430	236.820	3954.53	-102.78	-108.77	-149.98	40°11'49.580"N		104°37'31.371"W		2.11	
4060.00	8.280	221.700	4047.54	-111.20	-117.59	-160.25	40°11'49.494"N		104°37'31.504"W		2.34	
4155.00	8.240	214.790	4141.56	-121.56	-128.29	-168.69	40°11'49.389"N		104°37'31.614"W		1.05	
4249.00	8.150	209.800	4234.60	-132.58	-139.61	-175.84	40°11'49.278"N		104°37'31.708"W		0.76	
4344.00	8.290	201.060	4328.63	-144.58	-151.84	-181.65	40°11'49.157"N		104°37'31.784"W		1.32	
4438.00	8.010	196.820	4421.68	-156.99	-164.43	-185.98	40°11'49.033"N		104°37'31.841"W		0.71	
4533.00	8.150	196.190	4515.74	-169.63	-177.24	-189.77	40°11'48.907"N		104°37'31.892"W		0.17	
4628.00	8.130	195.560	4609.78	-182.42	-190.18	-193.45	40°11'48.780"N		104°37'31.941"W		0.10	
4722.00	8.130	196.730	4702.84	-195.03	-202.94	-197.15	40°11'48.654"N		104°37'31.990"W		0.18	
4816.00	7.950	203.060	4795.91	-207.19	-215.29	-201.61	40°11'48.532"N		104°37'32.049"W		0.96	
4911.00	7.790	209.690	4890.02	-218.59	-226.93	-207.37	40°11'48.418"N		104°37'32.125"W		0.97	
5006.00	8.630	212.650	4984.05	-229.90	-238.52	-214.41	40°11'48.304"N		104°37'32.217"W		0.99	
5100.00	8.570	213.230	5076.99	-241.39	-250.32	-222.05	40°11'48.188"N		104°37'32.317"W		0.11	
5195.00	8.770	208.750	5170.90	-253.36	-262.59	-229.41	40°11'48.068"N		104°37'32.414"W		0.74	
5289.00	8.520	205.630	5263.84	-265.66	-275.15	-235.87	40°11'47.944"N		104°37'32.498"W		0.57	
5384.00	8.170	206.960	5357.83	-277.77	-287.51	-241.97	40°11'47.823"N		104°37'32.579"W		0.42	
5478.00	7.650	213.330	5450.94	-288.69	-298.69	-248.44	40°11'47.713"N		104°37'32.663"W		1.08	



Actual Wellpath Report

HURLEY H26-730 AWP

Page 4 of 10



REFERENCE WELLPATH IDENTIFICATION			
Operator	NOBLE ENERGY, INC	Slot	SLOT#41 HURLEY H26-730(2234'FNL&1019'FEL,SEC.26)
Area	COLORADO	Well	HURLEY H26-730
Field	WELD COUNTY (NOBLE NAD 83 GRID)	Wellbore	HURLEY H26-730 AWB
Facility	SEC.26-T03N-R65W		

WELLPATH DATA (171 stations)										
MD [ft]	Inclination [°]	Azimuth [°]	TVD [ft]	Vert Sect [ft]	North [ft]	East [ft]	Latitude	Longitude	DLS [°/100ft]	Comments
5573.00	7.540	221.930	5545.11	-298.30	-308.61	-256.08	40°11'47.615"N	104°37'32.763"W	1.20	
5667.00	8.000	231.250	5638.25	-306.61	-317.30	-265.30	40°11'47.530"N	104°37'32.883"W	1.43	
5762.00	8.550	237.120	5732.26	-314.14	-325.27	-276.39	40°11'47.453"N	104°37'33.027"W	1.06	
5856.00	6.530	221.830	5825.45	-321.54	-333.05	-285.82	40°11'47.377"N	104°37'33.150"W	3.01	
5951.00	5.280	189.150	5919.97	-329.71	-341.39	-290.12	40°11'47.295"N	104°37'33.206"W	3.71	
6045.00	2.910	145.470	6013.75	-335.97	-347.63	-289.46	40°11'47.233"N	104°37'33.198"W	4.00	
6140.00	0.770	24.350	6108.71	-337.44	-349.03	-287.83	40°11'47.219"N	104°37'33.177"W	3.55	
6234.00	0.180	97.740	6202.71	-336.90	-348.48	-287.42	40°11'47.225"N	104°37'33.172"W	0.79	
6329.00	0.190	318.420	6297.70	-336.80	-348.38	-287.38	40°11'47.225"N	104°37'33.171"W	0.37	
6423.00	7.610	346.120	6391.42	-330.58	-342.21	-288.98	40°11'47.287"N	104°37'33.191"W	7.92	
6518.00	14.680	346.460	6484.57	-312.59	-324.38	-293.31	40°11'47.463"N	104°37'33.245"W	7.44	
6612.00	21.870	341.770	6573.78	-284.04	-296.13	-301.59	40°11'47.743"N	104°37'33.348"W	7.80	
6707.00	31.890	344.010	6658.41	-242.54	-255.10	-314.07	40°11'48.150"N	104°37'33.504"W	10.60	
6801.00	39.980	347.220	6734.46	-188.64	-201.69	-327.61	40°11'48.679"N	104°37'33.671"W	8.83	
6896.00	49.480	353.720	6801.91	-122.43	-135.84	-338.34	40°11'49.331"N	104°37'33.801"W	11.09	
6990.00	55.560	1.050	6859.13	-47.96	-61.44	-341.55	40°11'50.066"N	104°37'33.833"W	8.94	
7085.00	64.520	4.270	6906.53	33.94	20.67	-337.63	40°11'50.877"N	104°37'33.772"W	9.88	
7179.00	74.390	5.710	6939.48	121.14	108.24	-329.94	40°11'51.742"N	104°37'33.662"W	10.60	
7274.00	80.570	3.700	6960.07	213.15	200.62	-322.36	40°11'52.654"N	104°37'33.553"W	6.82	
7368.00	88.310	2.320	6969.17	306.24	293.98	-317.46	40°11'53.576"N	104°37'33.477"W	8.36	
7462.00	89.600	2.810	6970.88	399.89	387.87	-313.25	40°11'54.503"N	104°37'33.411"W	1.47	
7557.00	89.630	1.360	6971.52	494.61	482.80	-309.80	40°11'55.441"N	104°37'33.355"W	1.53	
7651.00	89.540	2.280	6972.20	588.37	576.75	-306.81	40°11'56.369"N	104°37'33.304"W	0.98	
7746.00	89.630	355.030	6972.89	683.30	671.66	-309.04	40°11'57.307"N	104°37'33.321"W	7.63	
7840.00	89.600	354.980	6973.52	777.19	765.30	-317.22	40°11'58.233"N	104°37'33.415"W	0.06	
7935.00	89.600	354.870	6974.19	872.07	859.92	-325.63	40°11'59.169"N	104°37'33.511"W	0.12	
8029.00	89.480	354.140	6974.94	965.91	953.49	-334.63	40°12'00.094"N	104°37'33.615"W	0.79	
8124.00	89.660	354.660	6975.65	1060.75	1048.03	-343.90	40°12'01.030"N	104°37'33.722"W	0.58	
8218.00	90.030	356.840	6975.91	1154.69	1141.77	-350.86	40°12'01.957"N	104°37'33.800"W	2.35	
8313.00	90.030	356.980	6975.86	1249.68	1236.63	-355.98	40°12'02.894"N	104°37'33.854"W	0.15	



Actual Wellpath Report

HURLEY H26-730 AWP



REFERENCE WELLPATH IDENTIFICATION			
Operator	NOBLE ENERGY, INC	Slot	SLOT#41 HURLEY H26-730(2234'FNL&1019'FEL,SEC.26)
Area	COLORADO	Well	HURLEY H26-730
Field	WELD COUNTY (NOBLE NAD 83 GRID)	Wellbore	HURLEY H26-730 AWB
Facility	SEC.26-T03N-R65W		

WELLPATH DATA (171 stations)										
MD [ft]	Inclination [°]	Azimuth [°]	TVD [ft]	Vert Sect [ft]	North [ft]	East [ft]	Latitude	Longitude	DLS [°/100ft]	Comments
8407.00	89.940	357.830	6975.88	1343.67	1330.53	-360.24	40°12'03.823"N	104°37'33.897"W	0.91	
8502.00	89.970	359.270	6975.96	1438.66	1425.50	-362.64	40°12'04.761"N	104°37'33.916"W	1.52	
8597.00	90.060	359.840	6975.93	1533.61	1520.49	-363.38	40°12'05.700"N	104°37'33.914"W	0.61	
8691.00	90.060	359.880	6975.84	1627.55	1614.49	-363.61	40°12'06.629"N	104°37'33.905"W	0.04	
8786.00	90.030	359.450	6975.76	1722.50	1709.49	-364.17	40°12'07.568"N	104°37'33.900"W	0.45	
8880.00	90.030	359.330	6975.71	1816.46	1803.49	-365.17	40°12'08.497"N	104°37'33.901"W	0.13	
8975.00	90.120	358.730	6975.59	1911.43	1898.47	-366.78	40°12'09.436"N	104°37'33.909"W	0.64	
9069.00	90.060	358.680	6975.44	2005.42	1992.45	-368.90	40°12'10.364"N	104°37'33.925"W	0.08	
9163.00	89.940	358.580	6975.44	2099.41	2086.42	-371.15	40°12'11.293"N	104°37'33.942"W	0.17	
9258.00	90.310	358.300	6975.23	2194.40	2181.39	-373.73	40°12'12.232"N	104°37'33.963"W	0.49	
9352.00	90.000	357.850	6974.98	2288.40	2275.33	-376.89	40°12'13.160"N	104°37'33.992"W	0.58	
9447.00	90.030	359.070	6974.95	2383.39	2370.30	-379.45	40°12'14.099"N	104°37'34.013"W	1.28	
9541.00	90.150	1.500	6974.81	2477.29	2464.29	-378.98	40°12'15.028"N	104°37'33.995"W	2.59	
9636.00	90.090	0.980	6974.61	2572.11	2559.26	-376.92	40°12'15.966"N	104°37'33.956"W	0.55	
9730.00	89.940	359.730	6974.58	2666.01	2653.26	-376.34	40°12'16.895"N	104°37'33.937"W	1.34	
9824.00	90.000	358.760	6974.63	2759.98	2747.25	-377.58	40°12'17.824"N	104°37'33.941"W	1.03	
9919.00	89.940	360.000	6974.68	2854.94	2842.24	-378.61	40°12'18.763"N	104°37'33.942"W	1.31	
10013.00	89.970	0.950	6974.75	2948.83	2936.24	-377.83	40°12'19.691"N	104°37'33.920"W	1.01	
10108.00	90.000	2.160	6974.78	3043.62	3031.20	-375.25	40°12'20.629"N	104°37'33.875"W	1.27	
10202.00	89.970	3.460	6974.80	3137.25	3125.09	-370.64	40°12'21.557"N	104°37'33.803"W	1.38	
10297.00	90.000	3.800	6974.83	3231.75	3219.90	-364.63	40°12'22.493"N	104°37'33.714"W	0.36	
10391.00	90.030	3.100	6974.80	3325.28	3313.73	-358.97	40°12'23.420"N	104°37'33.629"W	0.75	
10485.00	90.060	2.760	6974.73	3418.90	3407.60	-354.16	40°12'24.347"N	104°37'33.555"W	0.36	
10580.00	89.970	1.580	6974.71	3513.61	3502.53	-350.57	40°12'25.284"N	104°37'33.497"W	1.25	
10674.00	90.000	0.820	6974.73	3607.44	3596.51	-348.60	40°12'26.213"N	104°37'33.459"W	0.81	
10769.00	90.030	0.410	6974.71	3702.32	3691.51	-347.58	40°12'27.151"N	104°37'33.434"W	0.43	
10863.00	89.970	0.490	6974.71	3796.22	3785.50	-346.84	40°12'28.080"N	104°37'33.413"W	0.11	
10957.00	89.940	1.070	6974.78	3890.09	3879.49	-345.56	40°12'29.009"N	104°37'33.384"W	0.62	
11052.00	89.940	1.470	6974.88	3984.91	3974.47	-343.46	40°12'29.947"N	104°37'33.345"W	0.42	
11146.00	89.970	0.800	6974.95	4078.74	4068.45	-341.59	40°12'30.876"N	104°37'33.309"W	0.71	





Actual Wellpath Report  
HURLEY H26-730 AWP  
Page 6 of 10



REFERENCE WELLPATH IDENTIFICATION			
Operator	NOBLE ENERGY, INC	Slot	SLOT#41 HURLEY H26-730(2234'FNL&1019'FEL,SEC.26)
Area	COLORADO	Well	HURLEY H26-730
Field	WELD COUNTY (NOBLE NAD 83 GRID)	Wellbore	HURLEY H26-730 AWB
Facility	SEC.26-T03N-R65W		

WELLPATH DATA (171 stations)										
MD [ft]	Inclination [°]	Azimuth [°]	TVD [ft]	Vert Sect [ft]	North [ft]	East [ft]	Latitude	Longitude	DLS [°/100ft]	Comments
11241.00	90.150	358.350	6974.85	4173.69	4163.44	-342.30	40°12'31.814"N	104°37'33.306"W	2.59	
11336.00	89.850	359.240	6974.85	4268.67	4258.42	-344.30	40°12'32.753"N	104°37'33.320"W	0.99	
11430.00	90.000	0.070	6974.98	4362.62	4352.42	-344.86	40°12'33.682"N	104°37'33.315"W	0.90	
11525.00	89.910	2.270	6975.05	4457.44	4447.39	-342.92	40°12'34.620"N	104°37'33.278"W	2.32	
11619.00	90.220	2.500	6974.94	4551.13	4541.31	-339.01	40°12'35.548"N	104°37'33.216"W	0.41	
11713.00	89.940	2.140	6974.81	4644.83	4635.23	-335.21	40°12'36.476"N	104°37'33.155"W	0.49	
11808.00	90.030	0.360	6974.84	4739.65	4730.21	-333.13	40°12'37.414"N	104°37'33.116"W	1.88	
11902.00	90.180	3.620	6974.67	4833.38	4824.14	-329.87	40°12'38.342"N	104°37'33.062"W	3.47	
11997.00	90.120	3.500	6974.42	4927.89	4918.95	-323.97	40°12'39.278"N	104°37'32.974"W	0.14	
12091.00	90.030	3.180	6974.29	5021.44	5012.79	-318.49	40°12'40.205"N	104°37'32.891"W	0.35	
12186.00	90.030	0.770	6974.24	5116.18	5107.73	-315.22	40°12'41.143"N	104°37'32.837"W	2.54	
12281.00	89.970	358.530	6974.24	5211.12	5202.72	-315.80	40°12'42.081"N	104°37'32.832"W	2.36	
12375.00	90.060	358.410	6974.22	5305.11	5296.69	-318.31	40°12'43.010"N	104°37'32.853"W	0.16	
12469.00	89.880	355.940	6974.27	5399.10	5390.57	-322.94	40°12'43.938"N	104°37'32.901"W	2.63	
12564.00	90.060	354.550	6974.32	5494.01	5485.24	-330.82	40°12'44.875"N	104°37'32.990"W	1.48	
12658.00	90.090	354.750	6974.20	5587.87	5578.83	-339.58	40°12'45.800"N	104°37'33.091"W	0.22	
12753.00	89.940	354.540	6974.17	5682.73	5673.41	-348.45	40°12'46.736"N	104°37'33.193"W	0.27	
12847.00	89.970	355.150	6974.24	5776.61	5767.03	-356.89	40°12'47.662"N	104°37'33.290"W	0.65	
12941.00	90.120	357.970	6974.17	5870.58	5860.85	-362.53	40°12'48.589"N	104°37'33.351"W	3.00	
13036.00	90.090	0.120	6974.00	5965.55	5955.83	-364.12	40°12'49.528"N	104°37'33.360"W	2.26	
13130.00	89.850	0.720	6974.05	6059.45	6049.83	-363.43	40°12'50.457"N	104°37'33.339"W	0.69	
13224.00	90.000	357.800	6974.17	6153.40	6143.81	-364.64	40°12'51.386"N	104°37'33.342"W	3.11	
13319.00	90.030	359.100	6974.14	6248.39	6238.78	-367.21	40°12'52.324"N	104°37'33.363"W	1.37	
13414.00	89.910	0.030	6974.19	6343.34	6333.77	-367.93	40°12'53.263"N	104°37'33.361"W	0.99	
13508.00	90.000	0.710	6974.27	6437.25	6427.77	-367.33	40°12'54.192"N	104°37'33.341"W	0.73	
13603.00	89.970	1.740	6974.29	6532.07	6522.75	-365.30	40°12'55.130"N	104°37'33.303"W	1.08	
13697.00	90.060	2.400	6974.27	6625.80	6616.69	-361.90	40°12'56.058"N	104°37'33.247"W	0.71	
13792.00	89.970	2.470	6974.24	6720.48	6711.60	-357.86	40°12'56.995"N	104°37'33.183"W	0.12	
13886.00	89.910	3.640	6974.34	6814.08	6805.46	-352.85	40°12'57.923"N	104°37'33.106"W	1.25	
13981.00	90.120	3.500	6974.32	6908.59	6900.28	-346.94	40°12'58.859"N	104°37'33.018"W	0.27	



Actual Wellpath Report

HURLEY H26-730 AWP



REFERENCE WELLPATH IDENTIFICATION			
Operator	NOBLE ENERGY, INC	Slot	SLOT#41 HURLEY H26-730(2234'FNL&1019'FEL,SEC.26)
Area	COLORADO	Well	HURLEY H26-730
Field	WELD COUNTY (NOBLE NAD 83 GRID)	Wellbore	HURLEY H26-730 AWB
Facility	SEC.26-T03N-R65W		

WELLPATH DATA (171 stations)										
MD [ft]	Inclination [°]	Azimuth [°]	TVD [ft]	Vert Sect [ft]	North [ft]	East [ft]	Latitude	Longitude	DLS [°/100ft]	Comments
14076.00	90.090	2.370	6974.14	7003.20	6995.15	-342.07	40°12'59.796"N	104°37'32.943"W	1.19	
14170.00	89.850	3.080	6974.19	7096.84	7089.05	-337.61	40°13'00.723"N	104°37'32.874"W	0.80	
14264.00	90.000	2.700	6974.31	7190.46	7182.93	-332.87	40°13'01.650"N	104°37'32.801"W	0.43	
14359.00	89.940	2.180	6974.36	7285.14	7277.84	-328.82	40°13'02.588"N	104°37'32.737"W	0.55	
14453.00	90.000	3.090	6974.41	7378.80	7371.74	-324.50	40°13'03.515"N	104°37'32.669"W	0.97	
14548.00	89.940	3.100	6974.46	7473.39	7466.60	-319.37	40°13'04.452"N	104°37'32.591"W	0.06	
14642.00	90.060	3.280	6974.46	7566.96	7560.46	-314.14	40°13'05.379"N	104°37'32.511"W	0.23	
14737.00	90.090	3.690	6974.34	7661.48	7655.28	-308.37	40°13'06.316"N	104°37'32.425"W	0.43	
14832.00	90.060	2.730	6974.21	7756.05	7750.13	-303.05	40°13'07.252"N	104°37'32.344"W	1.01	
14926.00	89.910	1.360	6974.24	7849.78	7844.07	-299.69	40°13'08.180"N	104°37'32.289"W	1.47	
15020.00	90.060	359.570	6974.26	7943.68	7938.06	-298.93	40°13'09.109"N	104°37'32.267"W	1.91	
15115.00	90.000	358.780	6974.21	8038.64	8033.05	-300.30	40°13'10.048"N	104°37'32.273"W	0.83	
15209.00	90.180	357.630	6974.07	8132.64	8127.00	-303.24	40°13'10.976"N	104°37'32.299"W	1.24	
15304.00	89.970	356.790	6973.94	8227.63	8221.89	-307.87	40°13'11.914"N	104°37'32.347"W	0.91	
15398.00	90.060	356.500	6973.92	8321.62	8315.73	-313.37	40°13'12.842"N	104°37'32.405"W	0.32	
15493.00	89.940	357.260	6973.92	8416.61	8410.59	-318.54	40°13'13.780"N	104°37'32.460"W	0.81	
15587.00	89.970	358.070	6973.99	8510.61	8504.51	-322.37	40°13'14.709"N	104°37'32.498"W	0.86	
15682.00	90.180	359.010	6973.87	8605.59	8599.47	-324.79	40°13'15.647"N	104°37'32.517"W	1.01	
15776.00	90.220	359.890	6973.54	8699.55	8693.47	-325.69	40°13'16.576"N	104°37'32.516"W	0.94	
15860.00	90.000	1.370	6973.38	8783.44	8777.46	-324.77	40°13'17.406"N	104°37'32.494"W	1.78	Last BHI MWD Surveys
15884.00	90.000	1.370	6973.38	8807.39	8801.45	-324.19	40°13'17.643"N	104°37'32.483"W	0.00	Projection to Bit





Actual Wellpath Report

HURLEY H26-730 AWP



REFERENCE WELLPATH IDENTIFICATION			
Operator	NOBLE ENERGY, INC	Slot	SLOT#41 HURLEY H26-730(2234'FNL&1019'FEL,SEC.26)
Area	COLORADO	Well	HURLEY H26-730
Field	WELD COUNTY (NOBLE NAD 83 GRID)	Wellbore	HURLEY H26-730 AWB
Facility	SEC.26-T03N-R65W		

HOLE & CASING SECTIONS - Ref Wellbore: HURLEY H26-730 AWB      Ref Wellpath: HURLEY H26-730 AWP									
String/Diameter	Start MD [ft]	End MD [ft]	Interval [ft]	Start TVD [ft]	End TVD [ft]	Start N/S [ft]	Start E/W [ft]	End N/S [ft]	End E/W [ft]
13.5in Open Hole	30.00	1951.00	1921.00	30.00	1950.87	-0.01	0.02	-6.21	-11.90
9.625in Casing Surface	30.00	1951.00	1921.00	30.00	1950.87	-0.01	0.02	-6.21	-11.90
8.5in Open Hole	1951.00	16200.00	14249.00	1950.87	N/A	-6.21	-11.90	N/A	N/A

TARGETS								
Name	TVD [ft]	North [ft]	East [ft]	Grid East [US ft]	Grid North [US ft]	Latitude	Longitude	Shape
SECTION 14-T03N-R65W	31.00	-138.25	-2951.58	3241514.12	1315823.44	40°11'49.560"N	104°38'07.476"W	polygon
SECTION 23-T03N-R65W	31.00	-138.25	-2951.58	3241514.12	1315823.44	40°11'49.560"N	104°38'07.476"W	polygon
SECTION 26-T03N-R65W	31.00	-138.25	-2951.58	3241514.12	1315823.44	40°11'49.560"N	104°38'07.476"W	polygon
HURLEY H26-730 REV-1 BHL(1300'FSL&1335'FEL,SEC.14)	6929.30	8802.14	-346.59	3244118.98	1324763.43	40°13'17.652"N	104°37'32.772"W	point
HURLEY H26-730 Landing Point	6959.00	306.60	-345.10	3244120.48	1316268.27	40°11'53.703"N	104°37'33.832"W	point
HURLEY H26-730 REV-2 BHL(1300'FSL&1335'FEL,SEC.14)	6975.00	8802.14	-346.59	3244118.98	1324763.43	40°13'17.652"N	104°37'32.772"W	point
HURLEY H26-730 rev-2 Landing Point	6975.00	306.60	-345.10	3244120.48	1316268.27	40°11'53.703"N	104°37'33.832"W	point



Actual Wellpath Report

HURLEY H26-730 AWP



REFERENCE WELLPATH IDENTIFICATION			
Operator	NOBLE ENERGY, INC	Slot	SLOT#41 HURLEY H26-730(2234'FNL&1019'FEL,SEC.26)
Area	COLORADO	Well	HURLEY H26-730
Field	WELD COUNTY (NOBLE NAD 83 GRID)	Wellbore	HURLEY H26-730 AWB
Facility	SEC.26-T03N-R65W		

WELLPATH COMPOSITION - Ref Wellbore: HURLEY H26-730 AWB    Ref Wellpath: HURLEY H26-730 AWP				
Start MD [ft]	End MD [ft]	Positional Uncertainty Model	Log Name/Comment	Wellbore
0.00	1938.00	Gyrodata standard - Drop gyro or Multi-shot	3rd Party Surface Gyro <85'-1938'>	HURLEY H26-730 AWB
1938.00	15860.00	OWSG MWD rev2 + IFR1 + Multi-Station Correction	BH/ATC 8.5" Hole OWSG MWD+IFR+MSA <1981'-15860'>	HURLEY H26-730 AWB
15860.00	15884.00	Blind Drilling (std)	Projection to bit	HURLEY H26-730 AWB



Actual Wellpath Report

HURLEY H26-730 AWP

Page 10 of 10



REFERENCE WELLPATH IDENTIFICATION			
Operator	NOBLE ENERGY, INC	Slot	SLOT#41 HURLEY H26-730(2234'FNL&1019'FEL,SEC.26)
Area	COLORADO	Well	HURLEY H26-730
Field	WELD COUNTY (NOBLE NAD 83 GRID)	Wellbore	HURLEY H26-730 AWB
Facility	SEC.26-T03N-R65W		

WELLPATH COMMENTS				
MD [ft]	Inclination [°]	Azimuth [°]	TVD [ft]	Comment
1938.00	1.160	328.740	1937.87	Tie to Surface Gyros
15860.00	90.000	1.370	6973.38	Last BHI MWD Surveys
15884.00	90.000	1.370	6973.38	Projection to Bit

COMMENTS
<div>Wellpath general comments</div> <div>SURFACE LOCATION: SENE</div> <div>40.19740N</div> <div>104.62484W</div> <div>API: 05-123-46763</div>