

NOBLE ENERGY, INC

Location: COLORADO Slot: SLOT#40 HURLEY H26-724(2233'FNL&997'FEL,SEC.26)
Field: WELD COUNTY (NOBLE NAD 83 GRID) Well: HURLEY H26-724
Facility: SEC.26-T03N-R65W Wellbore: HURLEY H26-724 PWB

Plot reference wellpath is HURLEY H26-724 (REV-A.0) PWP	Grid System: NAD83 / Lambert Colorado SP, Northern Zone (501), US feet
True vertical depths are referenced to RIG (30KB) (RKB)	* = Wellpath was transformed from a different geodetic datum
Measured depths are referenced to RIG (30KB) (RKB)	North Reference: Grid north
RIG (30KB) (RKB) to Mean Sea Level: 4883 feet	Scale: True distance
Mean Sea Level to Ground level (At Slot: SLOT#40 HURLEY H26-724(2233'FNL&997'FEL,SEC.26)): 0 feet	Depths are in feet
Coordinates are in feet referenced to Slot	Created by: guensler on 2018-08-08
	Database: WA_DEN_Denver_Defn

Survey Program

Start MD (ft)	End MD (ft)	Tool	Model	Log Name/Comment	Wellbore
30.00	16171.90	OWSG MWD rev2	OWSG MWD rev2 + IFR1 + Multi-Station Correction		HURLEY H26-724 PWB

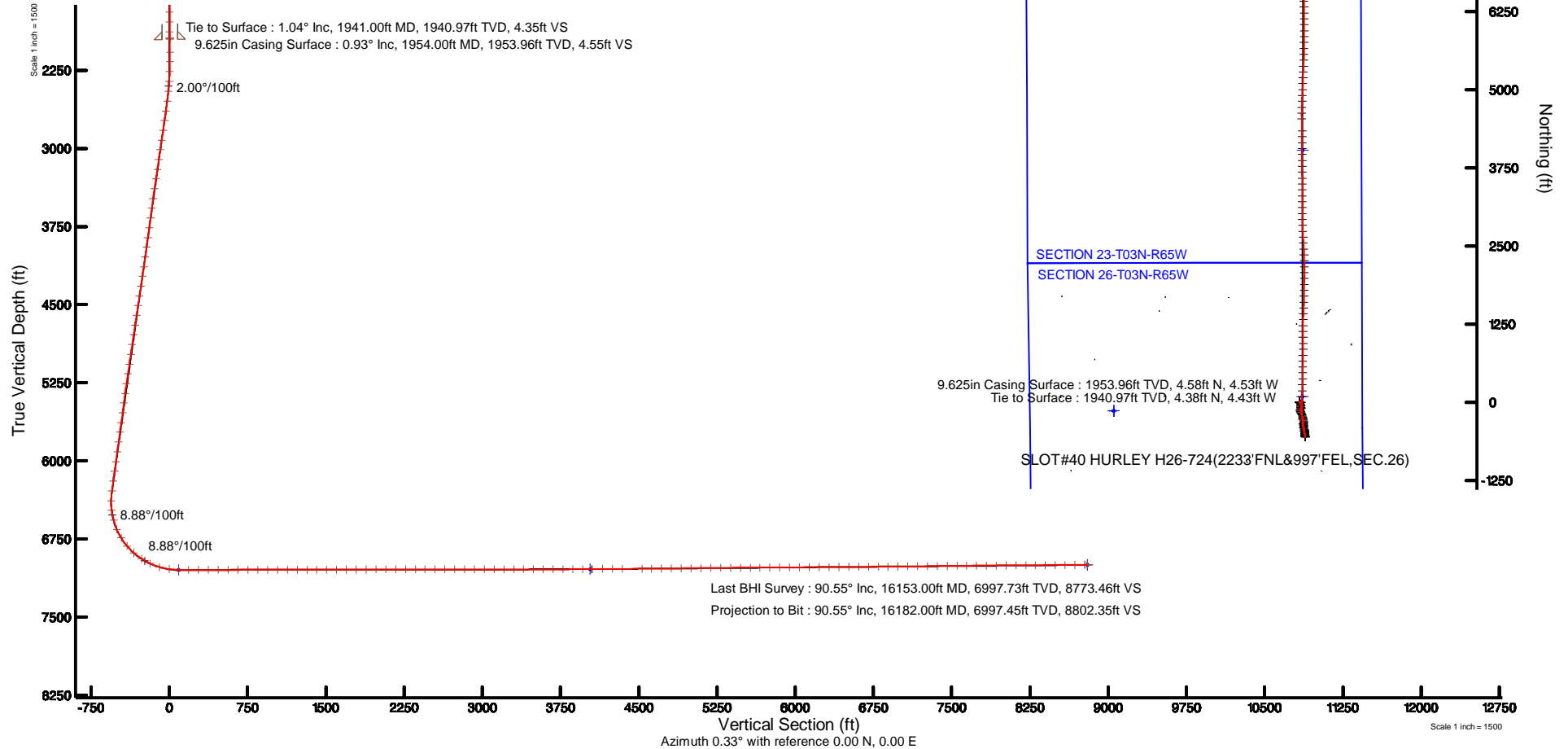
Comments

SURFACE LOCATION: SENE

40.19740N

104.62476W

API: 05-123-46769



Location Information

Facility Name			Grid East (US ft)	Grid North (US ft)	Latitude	Longitude
SEC.26-T03N-R65W			3241514.116	1315823.443	40°11'49.560"N	104°38'07.476"W
Slot	Local N (ft)	Local E (ft)	Grid East (US ft)	Grid North (US ft)	Latitude	Longitude
SLOT#40 HURLEY H26-724(2233'FNL&997'FEL,SEC.26)	138.47	2973.92	3244487.906	1315961.908	40°11'50.640"N	104°37'29.136"W
RIG (30KB) (RKB) to Ground level (At Slot: SLOT#40 HURLEY H26-724(2233'FNL&997'FEL,SEC.26))					4883ft	
Mean Sea Level to Ground level (At Slot: SLOT#40 HURLEY H26-724(2233'FNL&997'FEL,SEC.26))					0ft	
RIG (30KB) (RKB) to Mean Sea Level					4883ft	





Actual Wellpath Report

HURLEY H26-724 AWP

Page 1 of 9



REFERENCE WELLPATH IDENTIFICATION			
Operator	NOBLE ENERGY, INC	Slot	SLOT#40 HURLEY H26-724(2233'FNL&997'FEL,SEC.26)
Area	COLORADO	Well	HURLEY H26-724
Field	WELD COUNTY (NOBLE NAD 83 GRID)	Wellbore	HURLEY H26-724 AWB
Facility	SEC.26-T03N-R65W		

REPORT SETUP INFORMATION			
Projection System	NAD83 / Lambert Colorado SP, Northern Zone (501), US feet	Software System	WellArchitect® 5.0
North Reference	Grid	User	Guenaler
Scale	0.999957	Report Generated	8/8/2018 at 9:49:48 AM
Convergence at slot	0.57° East	Database/Source file	WA_DEN_Denver_Defn/HURLEY_H26-724_AWP.xml

WELLPATH LOCATION						
	Local coordinates		Grid coordinates		Geographic coordinates	
	North[ft]	East[ft]	Easting[US ft]	Northing[US ft]	Latitude	Longitude
Slot Location	138.47	2973.92	3244487.91	1315961.91	40°11'50.640"N	104°37'29.136"W
Facility Reference Pt			3241514.12	1315823.44	40°11'49.560"N	104°38'07.476"W
Field Reference Pt			3000000.00	4454105.15	48°46'34.315"N	105°30'00.000"W

WELLPATH DATUM			
Calculation method	Minimum curvature	RIG (30'KB) (RKB) to Facility Vertical Datum	4883.00ft
Horizontal Reference Pt	Slot	RIG (30'KB) (RKB) to Mean Sea Level	4883.00ft
Vertical Reference Pt	RIG (30'KB) (RKB)	RIG (30'KB) (RKB) to Ground Level at Slot (SLOT#40 HURLEY H26-724 (2233'FNL&997'FEL,SEC.26))	4883.00ft
MD Reference Pt	RIG (30'KB) (RKB)	Section Origin	N 0.00, E 0.00 ft
Field Vertical Reference	Mean Sea Level	Section Azimuth	0.33°



Actual Wellpath Report

HURLEY H26-724 AWP



REFERENCE WELLPATH IDENTIFICATION			
Operator	NOBLE ENERGY, INC	Slot	SLOT#40 HURLEY H26-724(2233'FNL&997'FEL,SEC.26)
Area	COLORADO	Well	HURLEY H26-724
Field	WELD COUNTY (NOBLE NAD 83 GRID)	Wellbore	HURLEY H26-724 AWB
Facility	SEC.26-T03N-R65W		

WELLPATH DATA (172 stations)										
MD [ft]	Inclination [°]	Azimuth [°]	TVD [ft]	Vert Sect [ft]	North [ft]	East [ft]	Latitude	Longitude	DLS [°/100ft]	Comments
0.00	0.000	8.250	0.00	0.00	0.00	0.00	40°11'50.640"N	104°37'29.136"W	0.00	
85.00	0.030	8.250	85.00	0.02	0.02	0.00	40°11'50.640"N	104°37'29.136"W	0.04	
181.00	0.170	352.080	181.00	0.19	0.19	-0.01	40°11'50.642"N	104°37'29.136"W	0.15	
275.00	0.440	336.530	275.00	0.66	0.66	-0.18	40°11'50.647"N	104°37'29.138"W	0.30	
370.00	0.230	334.750	370.00	1.16	1.16	-0.40	40°11'50.652"N	104°37'29.141"W	0.22	
464.00	0.270	60.060	464.00	1.44	1.45	-0.29	40°11'50.654"N	104°37'29.140"W	0.36	
559.00	0.040	175.780	559.00	1.52	1.52	-0.09	40°11'50.655"N	104°37'29.137"W	0.30	
653.00	0.260	67.580	653.00	1.57	1.57	0.11	40°11'50.656"N	104°37'29.134"W	0.29	
748.00	0.340	12.170	747.99	1.93	1.93	0.36	40°11'50.659"N	104°37'29.131"W	0.30	
847.00	0.080	61.120	846.99	2.25	2.25	0.49	40°11'50.662"N	104°37'29.129"W	0.30	
937.00	0.070	51.200	936.99	2.32	2.32	0.58	40°11'50.663"N	104°37'29.128"W	0.02	
1031.00	0.040	59.220	1030.99	2.37	2.37	0.66	40°11'50.663"N	104°37'29.127"W	0.03	
1126.00	0.490	306.650	1125.99	2.63	2.63	0.36	40°11'50.666"N	104°37'29.131"W	0.53	
1220.00	0.490	279.980	1219.99	2.94	2.94	-0.36	40°11'50.669"N	104°37'29.140"W	0.24	
1315.00	0.300	265.080	1314.99	2.98	2.99	-1.01	40°11'50.670"N	104°37'29.149"W	0.23	
1409.00	0.400	249.220	1408.99	2.84	2.85	-1.56	40°11'50.668"N	104°37'29.156"W	0.15	
1504.00	0.520	238.160	1503.98	2.49	2.50	-2.23	40°11'50.665"N	104°37'29.164"W	0.16	
1598.00	0.100	337.710	1597.98	2.34	2.35	-2.63	40°11'50.664"N	104°37'29.170"W	0.58	
1693.00	0.250	289.270	1692.98	2.48	2.50	-2.86	40°11'50.665"N	104°37'29.172"W	0.21	
1787.00	0.450	312.140	1786.98	2.80	2.82	-3.32	40°11'50.668"N	104°37'29.178"W	0.26	
1882.00	0.760	324.340	1881.97	3.55	3.58	-3.97	40°11'50.676"N	104°37'29.187"W	0.35	
1941.00	1.040	334.090	1940.97	4.35	4.38	-4.43	40°11'50.684"N	104°37'29.193"W	0.54	Tie to Surface
2075.00	0.090	108.300	2074.96	5.41	5.44	-4.86	40°11'50.694"N	104°37'29.198"W	0.82	
2169.00	0.070	120.600	2168.96	5.36	5.39	-4.74	40°11'50.694"N	104°37'29.196"W	0.03	
2264.00	2.080	153.900	2263.94	3.79	3.81	-3.93	40°11'50.678"N	104°37'29.186"W	2.13	
2358.00	4.330	153.900	2357.78	-0.92	-0.91	-1.62	40°11'50.631"N	104°37'29.157"W	2.39	
2453.00	6.200	154.310	2452.38	-8.74	-8.76	2.18	40°11'50.553"N	104°37'29.109"W	1.97	
2547.00	7.680	157.630	2545.69	-19.10	-19.14	6.77	40°11'50.450"N	104°37'29.051"W	1.63	
2642.00	8.620	162.040	2639.73	-31.72	-31.78	11.38	40°11'50.325"N	104°37'28.993"W	1.19	
2736.00	8.680	169.830	2732.66	-45.38	-45.47	14.81	40°11'50.189"N	104°37'28.951"W	1.25	



Actual Wellpath Report

HURLEY H26-724 AWP



REFERENCE WELLPATH IDENTIFICATION			
Operator	NOBLE ENERGY, INC	Slot	SLOT#40 HURLEY H26-724(2233'FNL&997'FEL,SEC.26)
Area	COLORADO	Well	HURLEY H26-724
Field	WELD COUNTY (NOBLE NAD 83 GRID)	Wellbore	HURLEY H26-724 AWB
Facility	SEC.26-T03N-R65W		

WELLPATH DATA (172 stations)											
MD [ft]	Inclination [°]	Azimuth [°]	TVD [ft]	Vert Sect [ft]	North [ft]	East [ft]	Latitude	Longitude	DLS [°/100ft]	Comments	
2831.00	8.730	177.940	2826.57	-59.63	-59.73	16.33	40°11'50.048"N	104°37'28.933"W	1.29		
2925.00	8.360	185.550	2919.53	-73.57	-73.66	15.93	40°11'49.911"N	104°37'28.940"W	1.26		
3020.00	8.510	192.590	3013.51	-87.31	-87.39	13.73	40°11'49.775"N	104°37'28.970"W	1.10		
3114.00	8.430	196.390	3106.48	-100.73	-100.79	10.27	40°11'49.643"N	104°37'29.016"W	0.60		
3209.00	8.560	187.980	3200.44	-114.43	-114.47	7.32	40°11'49.508"N	104°37'29.056"W	1.31		
3303.00	8.470	177.650	3293.41	-128.28	-128.32	6.63	40°11'49.371"N	104°37'29.067"W	1.63		
3398.00	8.370	168.120	3387.39	-142.03	-142.08	8.35	40°11'49.235"N	104°37'29.047"W	1.47		
3493.00	7.920	162.390	3481.44	-155.01	-155.08	11.75	40°11'49.106"N	104°37'29.004"W	0.98		
3587.00	8.320	157.990	3574.49	-167.46	-167.56	16.26	40°11'48.983"N	104°37'28.948"W	0.79		
3682.00	8.480	154.830	3668.48	-180.14	-180.27	21.81	40°11'48.857"N	104°37'28.878"W	0.51		
3776.00	8.550	153.670	3761.44	-192.64	-192.81	27.86	40°11'48.732"N	104°37'28.802"W	0.20		
3871.00	8.530	152.100	3855.39	-205.16	-205.36	34.29	40°11'48.607"N	104°37'28.720"W	0.25		
3965.00	8.730	155.860	3948.32	-217.80	-218.03	40.47	40°11'48.482"N	104°37'28.642"W	0.64		
4060.00	8.560	162.110	4042.25	-231.08	-231.34	45.59	40°11'48.350"N	104°37'28.578"W	1.00		
4154.00	8.440	165.910	4135.21	-244.40	-244.69	49.42	40°11'48.217"N	104°37'28.530"W	0.61		
4249.00	8.390	167.580	4229.19	-257.92	-258.22	52.60	40°11'48.083"N	104°37'28.491"W	0.26		
4343.00	8.810	169.990	4322.13	-271.69	-272.01	55.33	40°11'47.947"N	104°37'28.458"W	0.59		
4438.00	8.630	171.070	4416.04	-285.88	-286.21	57.70	40°11'47.806"N	104°37'28.429"W	0.26		
4532.00	8.590	174.670	4508.98	-299.83	-300.17	59.45	40°11'47.668"N	104°37'28.408"W	0.57		
4627.00	8.680	180.520	4602.90	-314.05	-314.40	60.04	40°11'47.527"N	104°37'28.402"W	0.93		
4721.00	8.510	183.910	4695.85	-328.09	-328.43	59.50	40°11'47.389"N	104°37'28.411"W	0.57		
4816.00	8.420	181.870	4789.81	-342.06	-342.40	58.80	40°11'47.251"N	104°37'28.422"W	0.33		
4910.00	8.430	179.250	4882.80	-355.83	-356.16	58.66	40°11'47.115"N	104°37'28.425"W	0.41		
5005.00	8.250	177.080	4976.79	-369.59	-369.94	59.10	40°11'46.979"N	104°37'28.421"W	0.38		
5100.00	8.510	172.510	5070.78	-383.36	-383.71	60.36	40°11'46.842"N	104°37'28.407"W	0.75		
5194.00	8.380	170.060	5163.76	-396.99	-397.35	62.45	40°11'46.707"N	104°37'28.382"W	0.41		
5289.00	8.260	166.730	5257.76	-410.44	-410.81	65.22	40°11'46.574"N	104°37'28.348"W	0.52		
5383.00	8.160	162.460	5350.80	-423.35	-423.75	68.78	40°11'46.446"N	104°37'28.304"W	0.66		
5477.00	7.800	163.290	5443.89	-435.80	-436.22	72.62	40°11'46.322"N	104°37'28.256"W	0.40		
5572.00	7.740	169.160	5538.02	-448.24	-448.68	75.68	40°11'46.199"N	104°37'28.218"W	0.84		

REFERENCE WELLPATH IDENTIFICATION			
Operator	NOBLE ENERGY, INC	Slot	SLOT#40 HURLEY H26-724(2233'FNL&997'FEL,SEC.26)
Area	COLORADO	Well	HURLEY H26-724
Field	WELD COUNTY (NOBLE NAD 83 GRID)	Wellbore	HURLEY H26-724 AWB
Facility	SEC.26-T03N-R65W		

WELLPATH DATA (172 stations)											
MD [ft]	Inclination [°]	Azimuth [°]	TVD [ft]	Vert Sect [ft]	North [ft]	East [ft]	Latitude	Longitude	DLS [°/100ft]	Comments	
5667.00	7.780	175.480	5632.15	-460.92	-461.37	77.39	40°11'46.073"N	104°37'28.197"W	0.90		
5761.00	7.770	177.520	5725.29	-473.61	-474.06	78.16	40°11'45.948"N	104°37'28.189"W	0.29		
5856.00	7.810	177.690	5819.41	-486.47	-486.93	78.70	40°11'45.821"N	104°37'28.184"W	0.05		
5950.00	7.700	178.790	5912.55	-499.15	-499.60	79.09	40°11'45.695"N	104°37'28.180"W	0.20		
6044.00	7.720	179.160	6005.70	-511.75	-512.21	79.32	40°11'45.571"N	104°37'28.179"W	0.06		
6139.00	7.710	175.620	6099.84	-524.48	-524.95	79.90	40°11'45.445"N	104°37'28.173"W	0.50		
6234.00	7.890	172.440	6193.96	-537.29	-537.76	81.24	40°11'45.318"N	104°37'28.158"W	0.49		
6328.00	7.850	168.540	6287.08	-549.97	-550.45	83.37	40°11'45.193"N	104°37'28.132"W	0.57		
6423.00	1.280	153.960	6381.73	-557.28	-557.77	85.12	40°11'45.120"N	104°37'28.110"W	6.97		
6517.00	7.720	354.480	6475.48	-551.93	-552.42	84.98	40°11'45.173"N	104°37'28.111"W	9.50		
6611.00	14.440	351.880	6567.67	-534.03	-534.51	82.71	40°11'45.350"N	104°37'28.138"W	7.17		
6706.00	23.320	345.970	6657.48	-504.04	-504.48	76.47	40°11'45.648"N	104°37'28.215"W	9.55		
6800.00	32.110	344.450	6740.62	-461.90	-462.28	65.24	40°11'46.066"N	104°37'28.354"W	9.38		
6895.00	40.830	349.330	6816.95	-407.01	-407.32	52.69	40°11'46.610"N	104°37'28.509"W	9.67		
6989.00	49.460	353.980	6883.21	-341.20	-341.45	43.23	40°11'47.262"N	104°37'28.622"W	9.82		
7084.00	56.740	356.140	6940.22	-265.61	-265.82	36.77	40°11'48.010"N	104°37'28.696"W	7.88		
7178.00	65.200	358.090	6985.79	-183.62	-183.81	32.69	40°11'48.820"N	104°37'28.738"W	9.18		
7273.00	73.430	359.520	7019.32	-94.86	-95.03	30.87	40°11'49.698"N	104°37'28.750"W	8.78		
7367.00	82.620	1.490	7038.81	-3.00	-3.18	31.70	40°11'50.605"N	104°37'28.728"W	9.99		
7462.00	88.830	1.910	7045.88	91.66	91.46	34.52	40°11'51.540"N	104°37'28.680"W	6.55		
7556.00	90.060	1.870	7046.80	185.62	185.41	37.62	40°11'52.468"N	104°37'28.628"W	1.31		
7651.00	90.090	2.080	7046.67	280.58	280.35	40.89	40°11'53.406"N	104°37'28.573"W	0.22		
7745.00	90.090	1.490	7046.52	374.55	374.30	43.82	40°11'54.334"N	104°37'28.524"W	0.63		
7840.00	90.000	0.130	7046.45	469.54	469.29	45.16	40°11'55.273"N	104°37'28.494"W	1.43		
7934.00	90.060	0.530	7046.40	563.54	563.29	45.70	40°11'56.202"N	104°37'28.475"W	0.43		
8029.00	90.220	1.910	7046.17	658.52	658.26	47.72	40°11'57.140"N	104°37'28.437"W	1.46		
8123.00	90.090	1.370	7045.91	752.50	752.23	50.41	40°11'58.068"N	104°37'28.391"W	0.59		
8218.00	90.060	0.310	7045.79	847.49	847.21	51.81	40°11'59.007"N	104°37'28.361"W	1.12		
8312.00	90.120	359.140	7045.64	941.49	941.21	51.36	40°11'59.936"N	104°37'28.354"W	1.25		
8407.00	90.180	359.620	7045.39	1036.47	1036.20	50.33	40°12'00.874"N	104°37'28.356"W	0.51		



Actual Wellpath Report
HURLEY H26-724 AWP
Page 5 of 9



REFERENCE WELLPATH IDENTIFICATION			
Operator	NOBLE ENERGY, INC	Slot	SLOT#40 HURLEY H26-724(2233'FNL&997'FEL,SEC.26)
Area	COLORADO	Well	HURLEY H26-724
Field	WELD COUNTY (NOBLE NAD 83 GRID)	Wellbore	HURLEY H26-724 AWB
Facility	SEC.26-T03N-R65W		

WELLPATH DATA (172 stations)										
MD [ft]	Inclination [°]	Azimuth [°]	TVD [ft]	Vert Sect [ft]	North [ft]	East [ft]	Latitude	Longitude	DLS [°/100ft]	Comments
8501.00	90.000	359.510	7045.24	1130.47	1130.20	49.61	40°12'01.803"N	104°37'28.353"W	0.22	
8596.00	90.180	0.420	7045.10	1225.46	1225.20	49.56	40°12'02.742"N	104°37'28.342"W	0.98	
8691.00	90.060	2.070	7044.90	1320.45	1320.17	51.62	40°12'03.680"N	104°37'28.303"W	1.74	
8785.00	90.280	3.070	7044.62	1414.37	1414.08	55.84	40°12'04.608"N	104°37'28.237"W	1.09	
8879.00	90.090	2.810	7044.31	1508.27	1507.95	60.66	40°12'05.535"N	104°37'28.163"W	0.34	
8974.00	90.150	1.870	7044.12	1603.21	1602.87	64.54	40°12'06.473"N	104°37'28.100"W	0.99	
9068.00	90.120	1.250	7043.89	1697.19	1696.84	67.09	40°12'07.401"N	104°37'28.056"W	0.66	
9163.00	90.120	0.600	7043.69	1792.19	1791.83	68.63	40°12'08.339"N	104°37'28.024"W	0.68	
9257.00	90.180	0.720	7043.45	1886.18	1885.82	69.71	40°12'09.268"N	104°37'27.998"W	0.14	
9352.00	90.150	0.880	7043.17	1981.18	1980.81	71.04	40°12'10.206"N	104°37'27.969"W	0.17	
9446.00	90.030	0.370	7043.03	2075.18	2074.80	72.06	40°12'11.135"N	104°37'27.943"W	0.56	
9541.00	90.060	359.470	7042.95	2170.18	2169.80	71.93	40°12'12.074"N	104°37'27.933"W	0.95	
9635.00	90.120	358.430	7042.80	2264.15	2263.78	70.21	40°12'13.003"N	104°37'27.943"W	1.11	
9730.00	90.090	357.740	7042.63	2359.07	2358.73	67.03	40°12'13.941"N	104°37'27.972"W	0.73	
9824.00	90.150	356.850	7042.43	2452.94	2452.62	62.60	40°12'14.869"N	104°37'28.017"W	0.95	
9918.00	90.000	356.240	7042.31	2546.74	2546.45	56.93	40°12'15.797"N	104°37'28.078"W	0.67	
10012.00	90.060	356.380	7042.26	2640.50	2640.26	50.88	40°12'16.725"N	104°37'28.144"W	0.16	
10107.00	90.090	357.500	7042.14	2735.34	2735.12	45.81	40°12'17.663"N	104°37'28.198"W	1.18	
10201.00	90.180	358.470	7041.92	2829.26	2829.06	42.51	40°12'18.591"N	104°37'28.228"W	1.04	
10296.00	90.120	359.220	7041.67	2924.22	2924.04	40.59	40°12'19.530"N	104°37'28.241"W	0.79	
10390.00	89.970	359.580	7041.59	3018.21	3018.04	39.61	40°12'20.459"N	104°37'28.242"W	0.41	
10485.00	90.150	0.180	7041.49	3113.21	3113.04	39.41	40°12'21.398"N	104°37'28.232"W	0.66	
10579.00	90.000	0.000	7041.37	3207.21	3207.04	39.56	40°12'22.326"N	104°37'28.218"W	0.25	
10674.00	89.910	359.680	7041.45	3302.20	3302.03	39.29	40°12'23.265"N	104°37'28.210"W	0.35	
10768.00	89.970	359.880	7041.54	3396.20	3396.03	38.93	40°12'24.194"N	104°37'28.202"W	0.22	
10863.00	90.030	359.500	7041.54	3491.19	3491.03	38.42	40°12'25.133"N	104°37'28.197"W	0.40	
10957.00	90.000	359.710	7041.52	3585.19	3585.03	37.77	40°12'26.062"N	104°37'28.193"W	0.23	
11051.00	90.090	359.720	7041.45	3679.18	3679.03	37.30	40°12'26.991"N	104°37'28.187"W	0.10	
11146.00	90.090	359.750	7041.30	3774.18	3774.03	36.86	40°12'27.929"N	104°37'28.181"W	0.03	
11240.00	90.280	359.590	7040.99	3868.17	3868.03	36.32	40°12'28.858"N	104°37'28.176"W	0.26	



Actual Wellpath Report

HURLEY H26-724 AWP



REFERENCE WELLPATH IDENTIFICATION			
Operator	NOBLE ENERGY, INC	Slot	SLOT#40 HURLEY H26-724(2233'FNL&997'FEL,SEC.26)
Area	COLORADO	Well	HURLEY H26-724
Field	WELD COUNTY (NOBLE NAD 83 GRID)	Wellbore	HURLEY H26-724 AWB
Facility	SEC.26-T03N-R65W		

WELLPATH DATA (172 stations)										
MD [ft]	Inclination [°]	Azimuth [°]	TVD [ft]	Vert Sect [ft]	North [ft]	East [ft]	Latitude	Longitude	DLS [°/100ft]	Comments
11335.00	90.710	359.750	7040.17	3963.16	3963.02	35.77	40°12'29.797"N	104°37'28.171"W	0.48	
11430.00	90.650	359.970	7039.04	4058.15	4058.01	35.54	40°12'30.736"N	104°37'28.162"W	0.24	
11524.00	90.340	359.880	7038.23	4152.14	4152.01	35.42	40°12'31.665"N	104°37'28.151"W	0.34	
11619.00	90.550	0.040	7037.49	4247.14	4247.01	35.35	40°12'32.603"N	104°37'28.140"W	0.28	
11713.00	90.340	358.620	7036.76	4341.12	4340.99	34.25	40°12'33.532"N	104°37'28.142"W	1.53	
11902.00	90.580	358.720	7035.25	4530.03	4529.94	29.86	40°12'35.400"N	104°37'28.175"W	0.14	
11996.00	90.620	0.630	7034.26	4624.02	4623.93	29.33	40°12'36.328"N	104°37'28.170"W	2.03	
12091.00	90.490	1.560	7033.34	4719.00	4718.90	31.15	40°12'37.267"N	104°37'28.134"W	0.99	
12185.00	90.650	2.810	7032.41	4812.95	4812.83	34.73	40°12'38.195"N	104°37'28.076"W	1.34	
12280.00	90.650	2.900	7031.33	4907.85	4907.70	39.46	40°12'39.132"N	104°37'28.003"W	0.09	
12374.00	90.620	2.850	7030.29	5001.75	5001.58	44.18	40°12'40.059"N	104°37'27.930"W	0.06	
12469.00	90.650	1.680	7029.23	5096.69	5096.50	47.93	40°12'40.996"N	104°37'27.870"W	1.23	
12563.00	90.620	1.600	7028.19	5190.66	5190.45	50.62	40°12'41.924"N	104°37'27.823"W	0.09	
12657.00	90.580	2.350	7027.21	5284.61	5284.39	53.86	40°12'42.852"N	104°37'27.770"W	0.80	
12752.00	90.490	2.730	7026.32	5379.54	5379.30	58.07	40°12'43.790"N	104°37'27.703"W	0.41	
12846.00	90.370	2.270	7025.62	5473.47	5473.20	62.17	40°12'44.717"N	104°37'27.638"W	0.51	
12941.00	90.460	1.040	7024.93	5568.44	5568.16	64.91	40°12'45.655"N	104°37'27.591"W	1.30	
13035.00	90.340	0.180	7024.27	5662.43	5662.15	65.91	40°12'46.584"N	104°37'27.566"W	0.92	
13130.00	90.400	0.570	7023.66	5757.43	5757.15	66.54	40°12'47.523"N	104°37'27.546"W	0.42	
13224.00	90.460	0.360	7022.95	5851.43	5851.14	67.30	40°12'48.451"N	104°37'27.524"W	0.23	
13318.00	90.460	0.480	7022.20	5945.43	5945.14	67.99	40°12'49.380"N	104°37'27.503"W	0.13	
13413.00	90.430	0.390	7021.46	6040.42	6040.13	68.71	40°12'50.319"N	104°37'27.482"W	0.10	
13508.00	90.550	359.940	7020.65	6135.42	6135.13	68.98	40°12'51.257"N	104°37'27.466"W	0.49	
13602.00	90.400	359.330	7019.87	6229.41	6229.12	68.38	40°12'52.186"N	104°37'27.462"W	0.67	
13697.00	90.460	358.950	7019.16	6324.38	6324.11	66.96	40°12'53.125"N	104°37'27.468"W	0.40	
13791.00	90.310	356.670	7018.52	6418.29	6418.03	63.37	40°12'54.054"N	104°37'27.503"W	2.43	
13886.00	90.520	355.450	7017.84	6513.02	6512.80	56.84	40°12'54.991"N	104°37'27.575"W	1.30	
13981.00	90.460	355.580	7017.02	6607.68	6607.51	49.41	40°12'55.927"N	104°37'27.658"W	0.15	
14075.00	90.430	356.330	7016.29	6701.40	6701.27	42.78	40°12'56.854"N	104°37'27.732"W	0.80	
14170.00	90.770	357.490	7015.30	6796.23	6796.12	37.66	40°12'57.792"N	104°37'27.786"W	1.27	



Actual Wellpath Report

HURLEY H26-724 AWP

Page 7 of 9



REFERENCE WELLPATH IDENTIFICATION			
Operator	NOBLE ENERGY, INC	Slot	SLOT#40 HURLEY H26-724(2233'FNL&997'FEL,SEC.26)
Area	COLORADO	Well	HURLEY H26-724
Field	WELD COUNTY (NOBLE NAD 83 GRID)	Wellbore	HURLEY H26-724 AWB
Facility	SEC.26-T03N-R65W		

WELLPATH DATA (172 stations)										
MD [ft]	Inclination [°]	Azimuth [°]	TVD [ft]	Vert Sect [ft]	North [ft]	East [ft]	Latitude	Longitude	DLS [°/100ft]	Comments
14264.00	90.490	0.920	7014.26	6890.19	6890.09	36.36	40°12'58.721"N	104°37'27.791"W	3.66	
14358.00	90.340	1.220	7013.58	6984.18	6984.08	38.11	40°12'59.649"N	104°37'27.756"W	0.36	
14453.00	90.340	1.270	7013.02	7079.17	7079.05	40.17	40°13'00.588"N	104°37'27.717"W	0.05	
14547.00	90.860	0.770	7012.04	7173.15	7173.03	41.85	40°13'01.516"N	104°37'27.684"W	0.77	
14642.00	90.370	0.430	7011.02	7268.15	7268.02	42.84	40°13'02.455"N	104°37'27.659"W	0.63	
14736.00	90.620	3.590	7010.20	7362.09	7361.95	46.14	40°13'03.382"N	104°37'27.605"W	3.37	
14831.00	91.110	6.940	7008.77	7456.71	7456.52	54.85	40°13'04.316"N	104°37'27.480"W	3.56	
14925.00	90.650	8.200	7007.33	7549.95	7549.69	67.24	40°13'05.236"N	104°37'27.309"W	1.43	
15020.00	90.400	7.460	7006.45	7644.13	7643.80	80.18	40°13'06.164"N	104°37'27.130"W	0.82	
15114.00	90.400	6.340	7005.80	7737.51	7737.11	91.47	40°13'07.085"N	104°37'26.973"W	1.19	
15209.00	90.460	5.310	7005.09	7832.07	7831.62	101.11	40°13'08.018"N	104°37'26.836"W	1.09	
15303.00	90.370	5.050	7004.40	7925.73	7925.23	109.60	40°13'08.942"N	104°37'26.715"W	0.29	
15398.00	90.340	4.220	7003.82	8020.46	8019.92	117.27	40°13'09.877"N	104°37'26.604"W	0.87	
15492.00	90.520	2.460	7003.11	8114.32	8113.75	122.75	40°13'10.804"N	104°37'26.521"W	1.88	
15587.00	90.430	0.890	7002.32	8209.29	8208.71	125.53	40°13'11.742"N	104°37'26.473"W	1.66	
15681.00	90.400	358.550	7001.64	8303.27	8302.70	125.07	40°13'12.671"N	104°37'26.467"W	2.49	
15776.00	90.550	356.560	7000.85	8398.15	8397.60	121.02	40°13'13.609"N	104°37'26.508"W	2.10	
15870.00	90.370	355.460	7000.10	8491.88	8491.37	114.47	40°13'14.536"N	104°37'26.580"W	1.19	
15965.00	90.430	353.970	6999.44	8586.42	8585.96	105.72	40°13'15.472"N	104°37'26.681"W	1.57	
16059.00	90.550	354.420	6998.63	8679.88	8679.47	96.22	40°13'16.397"N	104°37'26.791"W	0.50	
16153.00	90.550	355.450	6997.73	8773.46	8773.10	87.92	40°13'17.323"N	104°37'26.886"W	1.10	Last BHI Survey
16182.00	90.550	355.450	6997.45	8802.35	8802.01	85.62	40°13'17.609"N	104°37'26.912"W	0.00	Projection to Bit



Actual Wellpath Report

HURLEY H26-724 AWP



REFERENCE WELLPATH IDENTIFICATION			
Operator	NOBLE ENERGY, INC	Slot	SLOT#40 HURLEY H26-724(2233'FNL&997'FEL,SEC.26)
Area	COLORADO	Well	HURLEY H26-724
Field	WELD COUNTY (NOBLE NAD 83 GRID)	Wellbore	HURLEY H26-724 AWB
Facility	SEC.26-T03N-R65W		

HOLE & CASING SECTIONS - Ref Wellbore: HURLEY H26-724 AWB Ref Wellpath: HURLEY H26-724 AWP									
String/Diameter	Start MD [ft]	End MD [ft]	Interval [ft]	Start TVD [ft]	End TVD [ft]	Start N/S [ft]	Start E/W [ft]	End N/S [ft]	End E/W [ft]
13.5in Open Hole	30.00	1954.00	1924.00	30.00	1953.96	0.00	0.00	4.58	-4.53
9.625in Casing Surface	30.00	1954.00	1924.00	30.00	1953.96	0.00	0.00	4.58	-4.53
8.5in Open Hole	1954.00	16153.00	14199.00	1953.96	6997.73	4.58	-4.53	8773.10	87.92

TARGETS								
Name	TVD [ft]	North [ft]	East [ft]	Grid East [US ft]	Grid North [US ft]	Latitude	Longitude	Shape
SECTION 14-T03N-R65W	31.00	-138.47	-2973.92	3241514.12	1315823.44	40°11'49.560"N	104°38'07.476"W	polygon
SECTION 23-T03N-R65W	31.00	-138.47	-2973.92	3241514.12	1315823.44	40°11'49.560"N	104°38'07.476"W	polygon
SECTION 26-T03N-R65W	31.00	-138.47	-2973.92	3241514.12	1315823.44	40°11'49.560"N	104°38'07.476"W	polygon
HURLEY H26-724 REV-1 BHL(1300'FSL&915'FEL,SEC.14)	6998.57	8802.41	49.96	3244537.86	1324763.92	40°13'17.616"N	104°37'27.372"W	point
Tangent/Change INC	7040.11	4034.00	44.50	3244532.40	1319995.73	40°12'30.498"N	104°37'28.049"W	point
HURLEY H26-724 LANDING POINT	7047.00	89.00	40.00	3244527.90	1316050.90	40°11'51.516"N	104°37'28.609"W	point

WELLPATH COMPOSITION - Ref Wellbore: HURLEY H26-724 AWB Ref Wellpath: HURLEY H26-724 AWP			
Start MD [ft]	End MD [ft]	Positional Uncertainty Model	Log Name/Comment
0.00	1941.00	Gyrodata standard - Drop gyro or Multi-shot	3rd Party Surface Gyros <85'-1941'>
1941.00	16153.00	OWSG MWD rev2 + IFR1 + Multi-Station Correction	BHI/ATC 8.5" Hole <2075'-16153'>
16153.00	16182.00	Blind Drilling (std)	Projection to bit



Actual Wellpath Report

HURLEY H26-724 AWP



REFERENCE WELLPATH IDENTIFICATION			
Operator	NOBLE ENERGY, INC	Slot	SLOT#40 HURLEY H26-724(2233'FNL&997'FEL,SEC.26)
Area	COLORADO	Well	HURLEY H26-724
Field	WELD COUNTY (NOBLE NAD 83 GRID)	Wellbore	HURLEY H26-724 AWB
Facility	SEC.26-T03N-R65W		

WELLPATH COMMENTS				
MD [ft]	Inclination [°]	Azimuth [°]	TVD [ft]	Comment
1941.00	1.040	334.090	1940.97	Tie to Surface
16153.00	90.550	355.450	6997.73	Last BHI Survey
16182.00	90.550	355.450	6997.45	Projection to Bit

COMMENTS	
<div>Wellpath general comments</div> <div>SURFACE LOCATION: SENE</div> <div>40.19740N</div> <div>104.62476W</div> <div>API: 05-123-46769</div>	