





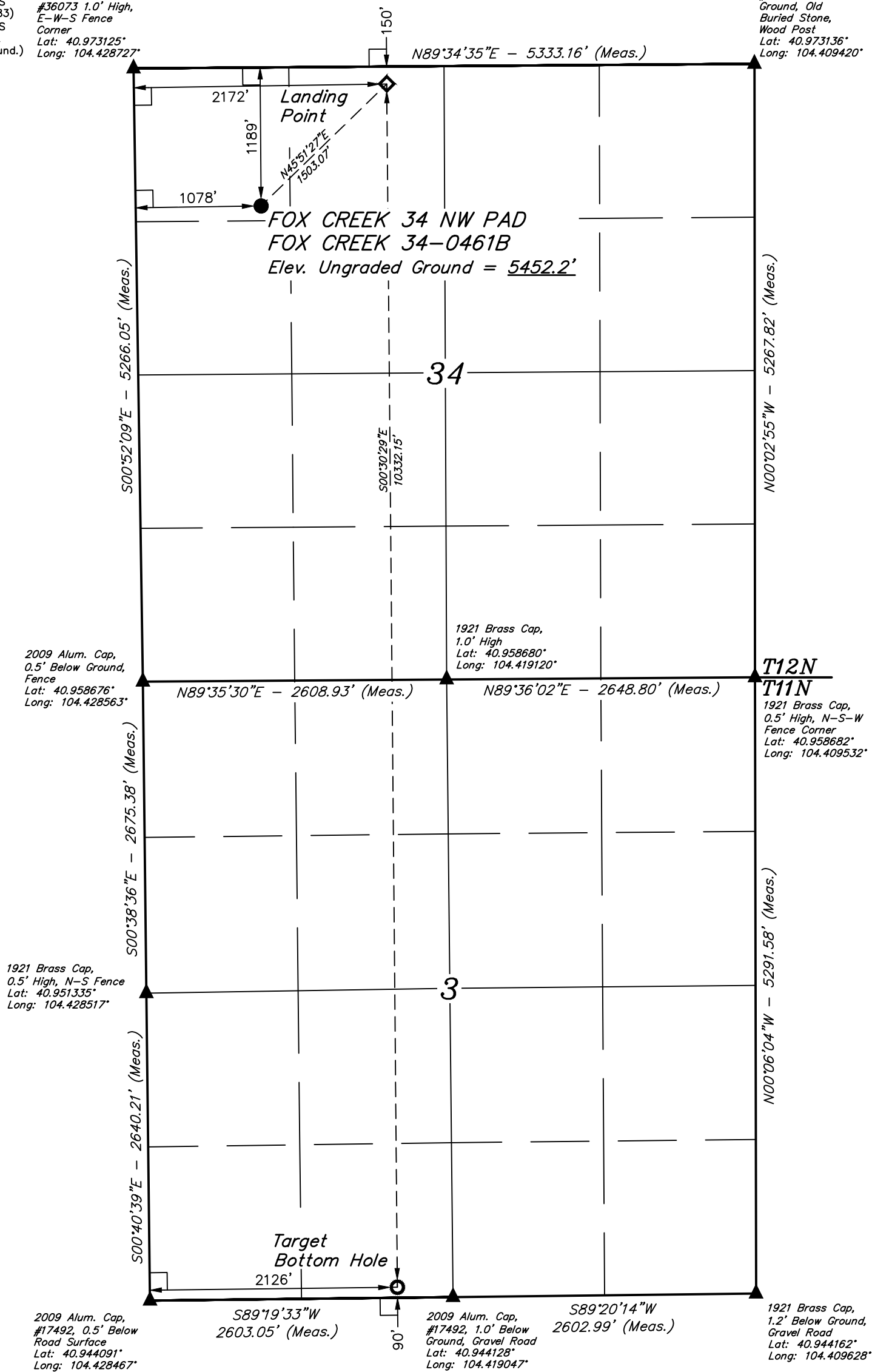


T12N, R63W, 6th P.M.

-  = 90° SYMBOL
 = PROPOSED WELLHEAD.
 = LANDING POINT.
 = TARGET BOTTOM HOLE.
 = SECTION CORNERS
LOCATED. (NAD 83)
 = SECTION CORNERS
RE-ESTABLISHED.
(Not Set on Ground.)
(NAD 83)

2008 Alum. Cap,
#36073 1.0' High,
E-W-S Fence
Corner
Lat: 40.973125°
Long: 104.428727°

2008 Alum. Cap,
#36073, 0.5' Below
Ground, Old
Buried Stone,
Wood Post
Lat: 40.973136°
Long: 104.409420°



A horizontal scale bar with alternating black and white segments. Above the bar, from left to right, are the labels: 1000', 500', 0', 500', and 1000'.

NAD 83 (SURFACE LOCATION)	NAD 83 (LANDING POINT)	NAD 83 (TARGET BOTTOM HOLE)
LATITUDE = 40°58'11.52" (40.969866°)	LATITUDE = 40°58'21.79" (40.972718°)	LATITUDE = 40°56'39.72" (40.944368°)
LONGITUDE = 104°25'29.24" (104.424789°)	LONGITUDE = 104°25'15.09" (104.420859°)	LONGITUDE = 104°25'14.79" (104.420775°)
NAD 27 (SURFACE LOCATION)	NAD 27 (LANDING POINT)	NAD 27 (TARGET BOTTOM HOLE)
LATITUDE = 40°58'11.58" (40.969883°)	LATITUDE = 40°58'21.85" (40.972736°)	LATITUDE = 40°56'39.79" (40.944385°)
LONGITUDE = 104°25'27.39" (104.424276°)	LONGITUDE = 104°25'13.25" (104.420346°)	LONGITUDE = 104°25'12.95" (104.420263°)
STATE PLANE NAD 83 (CO. NORTH)	STATE PLANE NAD 83 (CO. NORTH)	STATE PLANE NAD 83 (CO. NORTH)
N: 1597977.27' E: 3296932.72'	N: 1599029.80' E: 3298005.28'	N: 1588701.05' E: 3298154.15'
STATE PLANE NAD 27 (CO. NORTH)	STATE PLANE NAD 27 (CO. NORTH)	STATE PLANE NAD 27 (CO. NORTH)
N: 597974.90' E: 2297082.24'	N: 599027.41' E: 2298154.80'	N: 588698.86' E: 2298303.61'

THIS IS TO CERTIFY THAT THE ABOVE MAP WAS PREPARED FROM FIELD NOTES OF ACTUAL SURVEYS MADE BY ME OR UNDER MY SUPERVISION AND THAT THE SAME ARE TRUE AND CORRECT TO THE BEST OF MY KNOWLEDGE AND BELIEF.

REGISTERED LAND SURVEYOR
REGISTRATION NO. 28285
STATE OF COLORADO
APR 10 2018

BASIS OF BEARINGS
TRANSVERSE MERCATOR PROJECTION WITH
A CENTRAL MERIDIAN OF W105°00'00".

BASIS OF ELEVATION
OPUS SOLUTION GENERATED NAVD 88



UELS, LLC
Corporate Office * 85 South 200 East
Vernal, UT 84078 * (435) 789-1017



HIGHPOINT OPERATING CORPORATION

**FOX CREEK 34 NW PAD
FOX CREEK 34-0461B
NW 1/4 NW 1/4, SECTION 34, T12N, R63W, 6th P.M.
WELD COUNTY, COLORADO**

SURVEYED BY	MATTHEW MILLER, J.B.	08-16-18	SCALE
DRAWN BY	J.U.	08-22-18	1" = 1000'

WELL LOCATION PLAT