

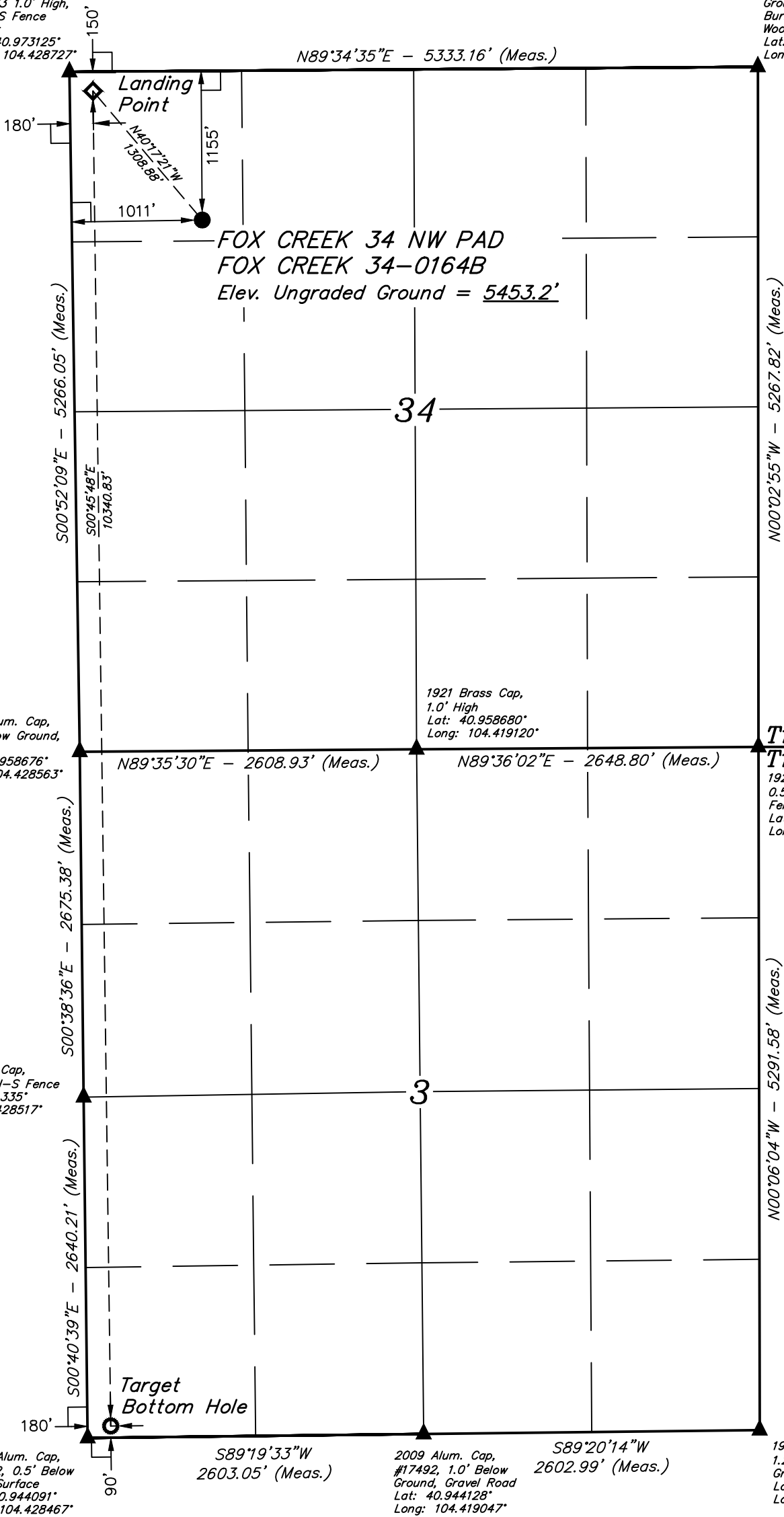
LEGEND:

- └─┘ = 90° SYMBOL
● = PROPOSED WELLHEAD.
◆ = LANDING POINT.
○ = TARGET BOTTOM HOLE.
▲ = SECTION CORNERS LOCATED. (NAD 83)
△ = SECTION CORNERS RE-ESTABLISHED. (Not Set on Ground.) (NAD 83)

2008 Alum. Cap,
#36073 1.0' High,
E-W-S Fence
Corner
Lat: 40.973125°
Long: 104.428727°

2008 Alum. Cap,
#36073, 0.5' Below
Ground, Old
Buried Stone,
Wood Post
Lat: 40.973136°
Long: 104.409420°

T12N, R63W, 6th P.M.



1921 Brass Cap,
0.5' High, N-S Fence
Lat: 40.951335°
Long: 104.428517°

1921 Brass Cap,
1.0' High
Lat: 40.958680°
Long: 104.419120°

T12N
T11N
1921 Brass Cap,
0.5' High, N-S-W
Fence Corner
Lat: 40.958682°
Long: 104.409532°

2009 Alum. Cap,
#17492, 0.5' Below
Road Surface
Lat: 40.944091°
Long: 104.428467°

2009 Alum. Cap,
#17492, 1.0' Below
Ground, Gravel Road
Lat: 40.944128°
Long: 104.419047°

1921 Brass Cap,
1.2' Below Ground,
Gravel Road
Lat: 40.944162°
Long: 104.409628°

PDOP = 1.4



| NAD 83 (SURFACE LOCATION) | NAD 83 (LANDING POINT) | NAD 83 (TARGET BOTTOM HOLE) |
|-----------------------------------------|-----------------------------------------|-----------------------------------------|
| LATITUDE = 40°58'11.85" (40.969959°) | LATITUDE = 40°58'21.77" (40.972714°) | LATITUDE = 40°56'39.62" (40.944340°) |
| LONGITUDE = 104°25'30.11" (104.425031°) | LONGITUDE = 104°25'41.06" (104.428071°) | LONGITUDE = 104°25'40.14" (104.427817°) |
| NAD 27 (SURFACE LOCATION) | NAD 27 (LANDING POINT) | NAD 27 (TARGET BOTTOM HOLE) |
| LATITUDE = 40°58'11.92" (40.969976°) | LATITUDE = 40°58'21.83" (40.972731°) | LATITUDE = 40°56'39.69" (40.944357°) |
| LONGITUDE = 104°25'28.26" (104.424518°) | LONGITUDE = 104°25'39.21" (104.427558°) | LONGITUDE = 104°25'38.30" (104.427305°) |
| STATE PLANE NAD 83 (CO. NORTH) | STATE PLANE NAD 83 (CO. NORTH) | STATE PLANE NAD 83 (CO. NORTH) |
| N: 1598010.56' E: 3296865.55' | N: 1599004.03' E: 3296013.83' | N: 1588667.37' E: 3296208.89' |
| STATE PLANE NAD 27 (CO. NORTH) | STATE PLANE NAD 27 (CO. NORTH) | STATE PLANE NAD 27 (CO. NORTH) |
| N: 598008.19' E: 2297015.06' | N: 599001.65' E: 2296163.36' | N: 588665.19' E: 2296358.36' |

CERTIFICATE

THIS IS TO CERTIFY THAT THE ABOVE PLAT WAS PREPARED FROM FIELD NOTES OF ACTUAL SURVEYS MADE BY ME OR UNDER MY SUPERVISION, AND THAT THE SAME ARE TRUE AND CORRECT TO THE BEST OF MY KNOWLEDGE AND BELIEF.

REGISTERED LAND SURVEYOR
REGISTRATION NO. 28285
STATE OF COLORADO

BASIS OF BEARINGS
TRANSVERSE MERCATOR PROJECTION WITH
A CENTRAL MERIDIAN OF W105°00'00".

BASIS OF ELEVATION
OPUS SOLUTION GENERATED NAVD 88



UELS, LLC
Corporate Office * 85 South 200 East
Vernal, UT 84078 * (435) 789-1017



HIGHPOINT OPERATING CORPORATION

FOX CREEK 34 NW PAD
FOX CREEK 34-0164B
NW 1/4 NW 1/4, SECTION 34, T12N, R63W, 6th P.M.
WELD COUNTY, COLORADO

| | | | |
|-------------|----------------------|----------|------------|
| SURVEYED BY | MATTHEW MILLER, J.B. | 08-16-18 | SCALE |
| DRAWN BY | J.U. | 08-22-18 | 1" = 1000' |

WELL LOCATION PLAT