

Crew

Name	Arrive Wellsite	Depart Wellsite	Name	Arrive Wellsite	Depart Wellsite	Name	Arrive Wellsite	Depart Wellsite
Tien Bui	2018-10-07	2018-10-12						

Mud Properties Record

Date / Time	Run No.	Measured Depth (ft)	Mud Type	Density (ppg)	Viscosity (cP)	pH	Fluid Loss (cm3)	Oil / Water	Source	Total Chlorides (ppm)	K+ (%)
2018-10-08 12:49	1	1958.00	Oil Based Mud	9.3	11	N/A	10.0	81/19	Active Pit	25000	0.00
2018-10-09 09:04	1	5515.00	Oil Based Mud	9.3	9	N/A	18.1	83.4/16.6	Active Pit	26000	0.00
2018-10-10 08:41	1	10227.00	Oil Based Mud	9.6	10	N/A	18.3	84.3/15.7	Active Pit	25500	0.00
2018-10-11 09:04	1	15104.00	Oil Based Mud	9.8	16	N/A	21.4	84.2/15.8	Active Pit	24000	0.00

Equipment and Service Data

Run No.	Tool	Serial Number	Measurement	Sensor Offset (ft)	Bit Offset (ft)	Max O.D. (in)	Min I.D. (in)
1	ATC_SU	14169950	Near Bit Inclination	5.93	6.72	7.000	4.330
1	ATC_SU	14169950	Near Bit VSS	5.93	6.72	7.000	4.330
1	ATC_MWD	12899370	Gamma (single)	2.75	12.89	7.000	3.250
1	ATC_MWD	12899370	Directional (mag)	12.27	22.41	7.000	3.250

Service and Tool Mnemonics

Mnemonic	Name	Description
ATC_SU	ATC_SU	Auto Trak Curve Steering Unit
ATC_MWD	ATC_MWD	Auto Trak Curve MWD
ATC_LCPM	ATC_LCPM	Auto Trak Curve LCPM

Comments

1

Depth measurements were obtained from a depth control system not supplied or operated by Baker Hughes. Due to lack of control by Baker Hughes logging engineers, depth calibrations and measurements could not be independently verified.

2

Baker Hughes LWD Run 1 utilized 6 ¾ inch NaviGamma service (Gamma Ray and Directional) behind an 8 1/2 inch bit and rotary steerable assembly from 1958 to 17000 feet MD (1958 to 6555 feet TVD).

3

The Gamma Ray Apparent (GRAM) data is presented 0 to 300 API, per the customer's request.

Remarks


Number	Measured Depth (ft)	Hole Section (in)	Run No.	Remark
--------	---------------------	-------------------	---------	--------

Curve Mnemonics

Presented Curves	Description	Units
ROPA	Depth Averaged ROP 3 ft Average	ft/h
WOBA	Weight On Bit, Average 1 ft Average	klb
GRAM	Gamma Ray - Apparent - Memory 0.5 ft Average	API
TCDM	Directional Real-Time Survey Temperature	degF

BAKER HUGHES

a GE company



Company

Well

Interval

Created

Noble Energy

Wells Ranch State BB09-617

Date From: 2018-10-08 16:46

Date To: 2018-10-12 06:22

Top: 1958.00 ft

Bottom: 16999.64 ft

2018-10-12 07:29:29

Gamma Ray - Apparent 0.5 ft Average GRAM

0300

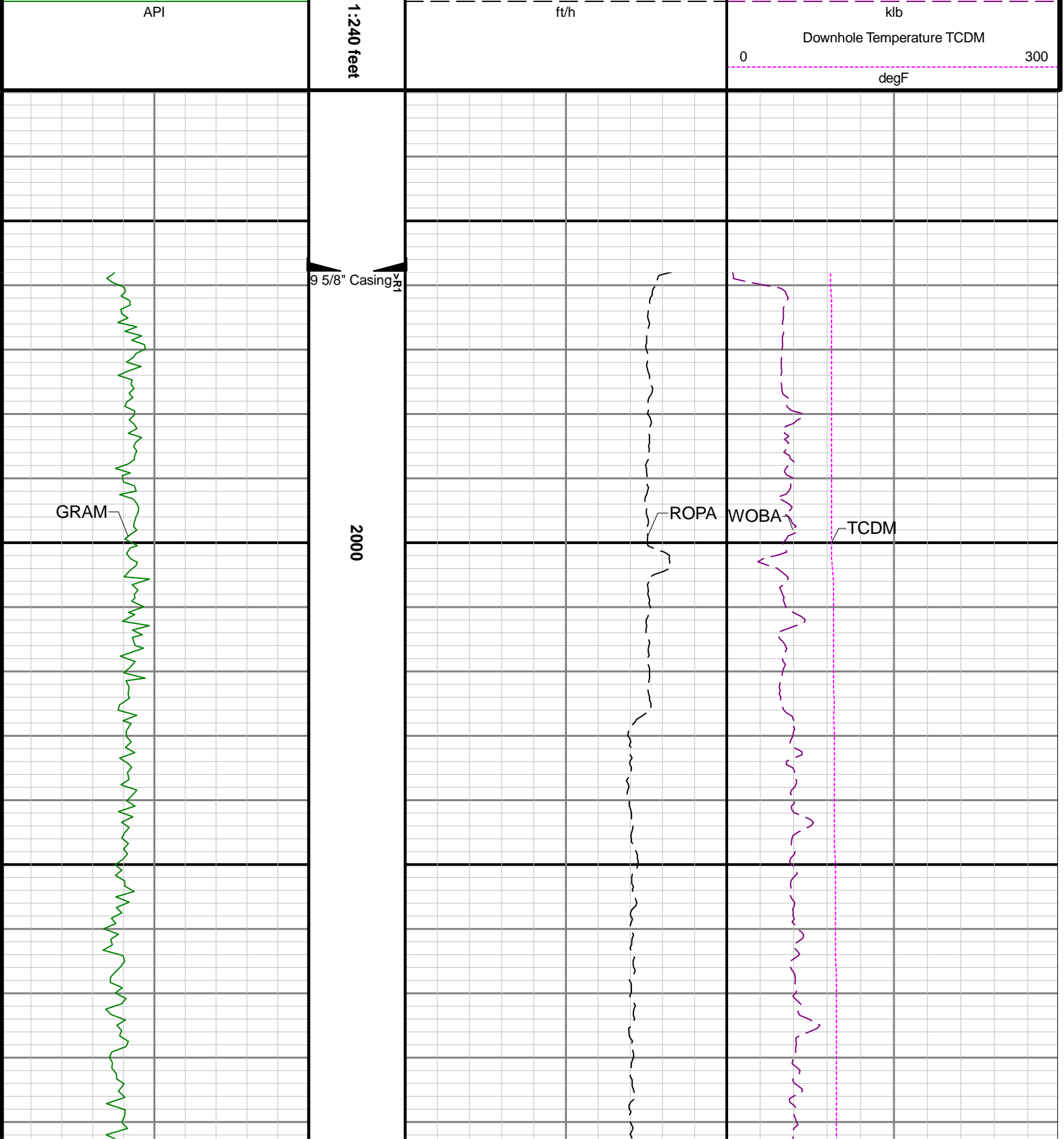
TVD

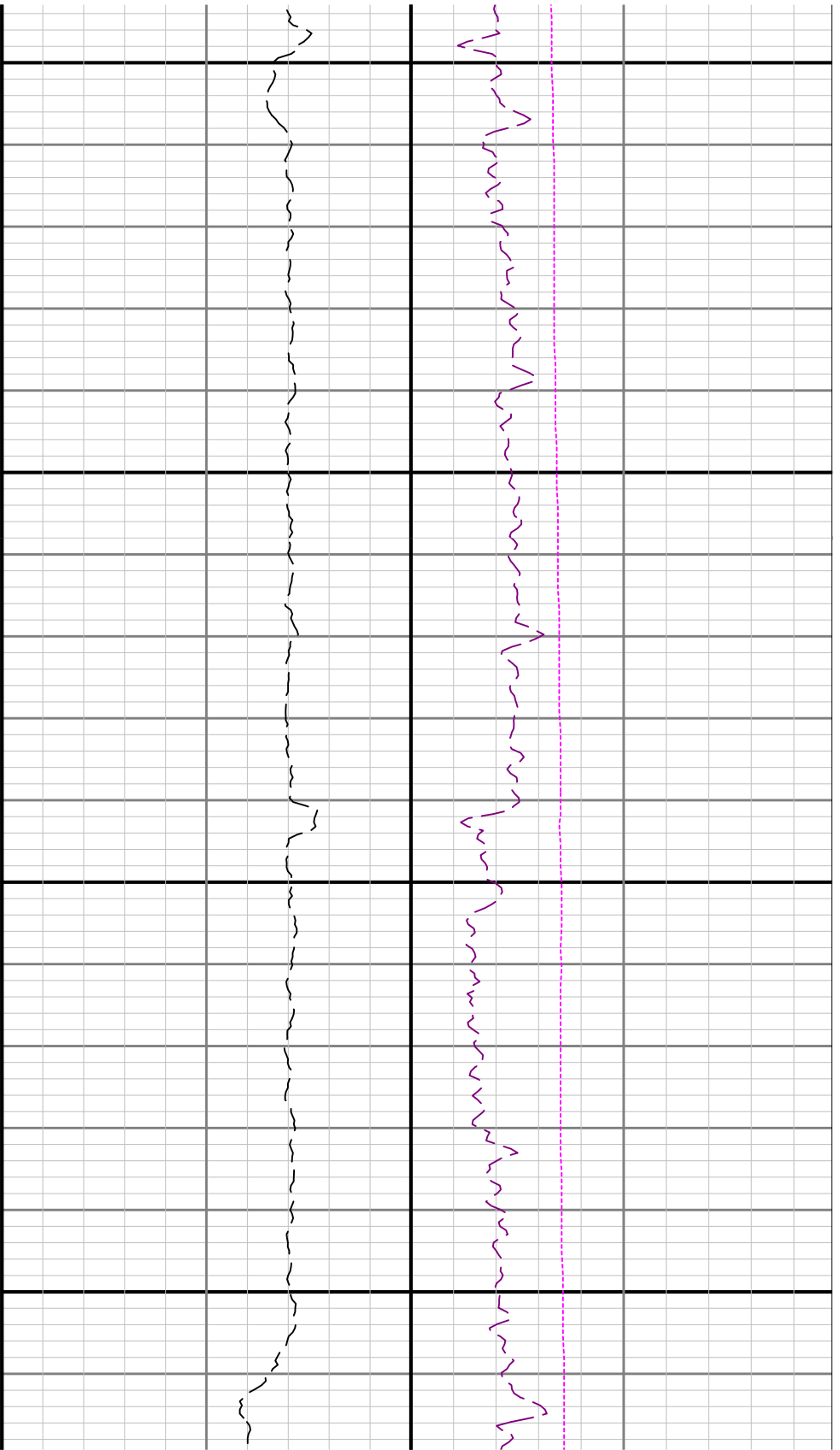
Depth Averaged ROP 3 ft Average ROPA

100000

Weight On Bit, Average 1 ft Average WOBA

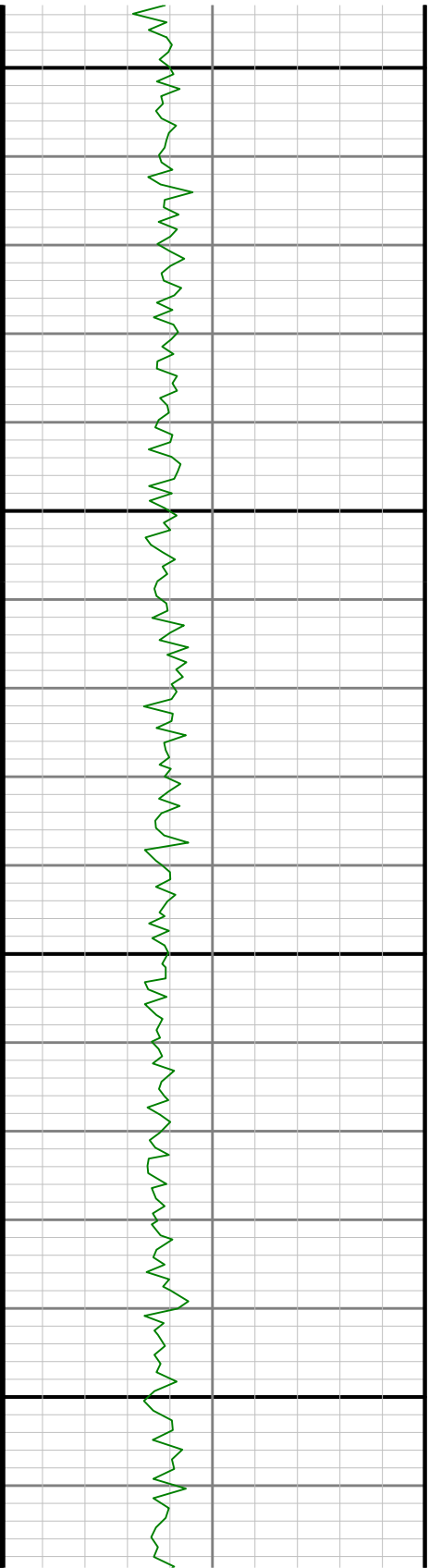
050

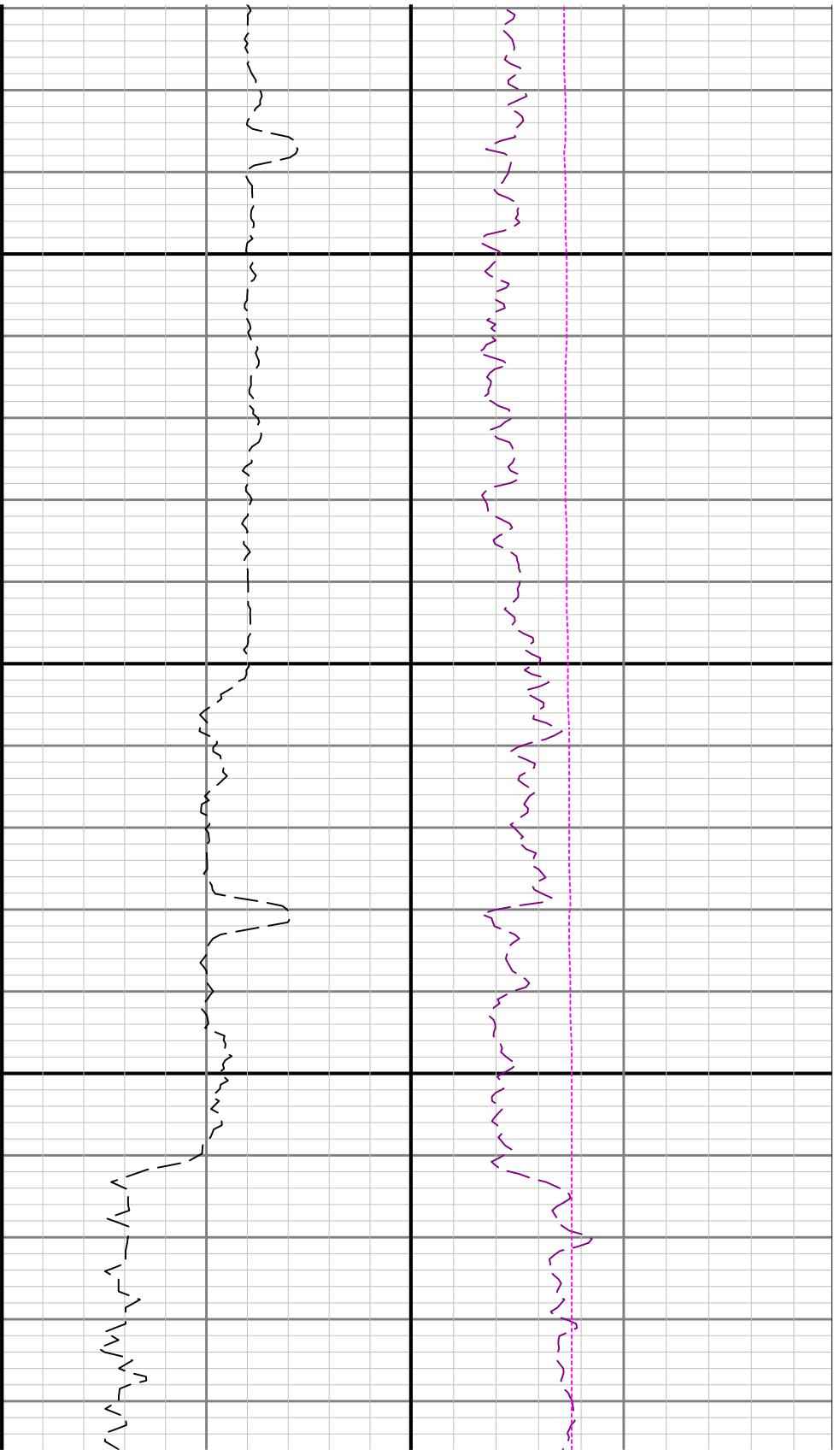




2100

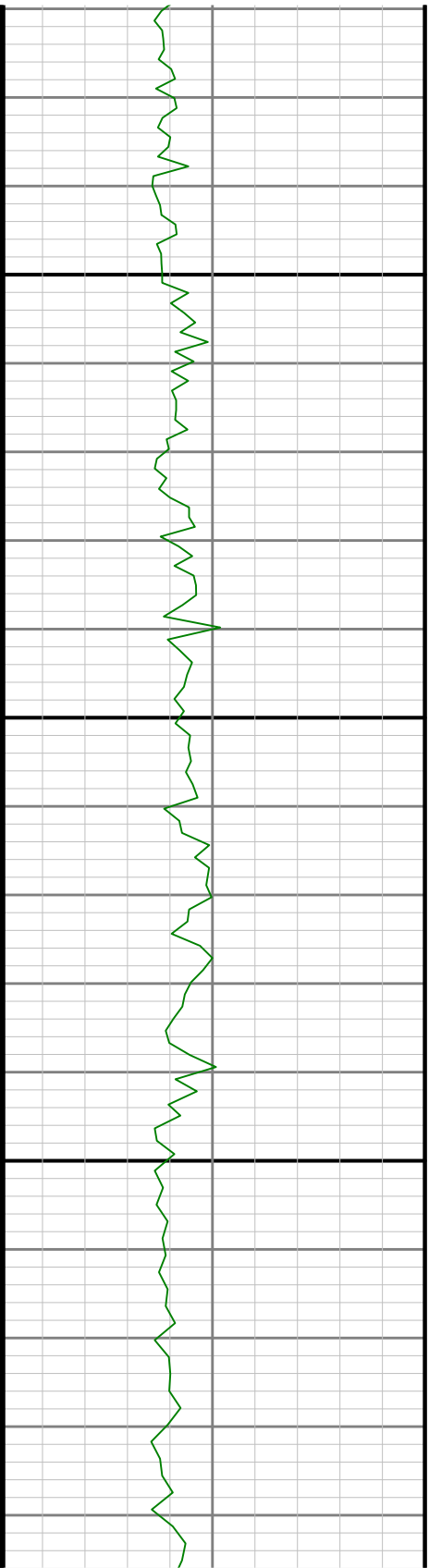
2200





2300

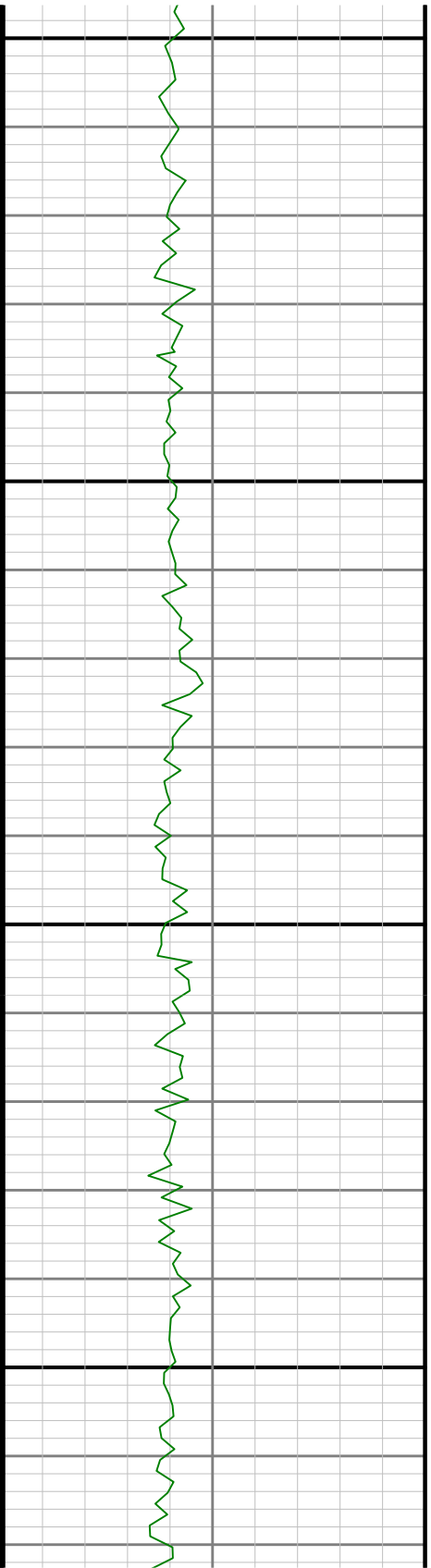
2400

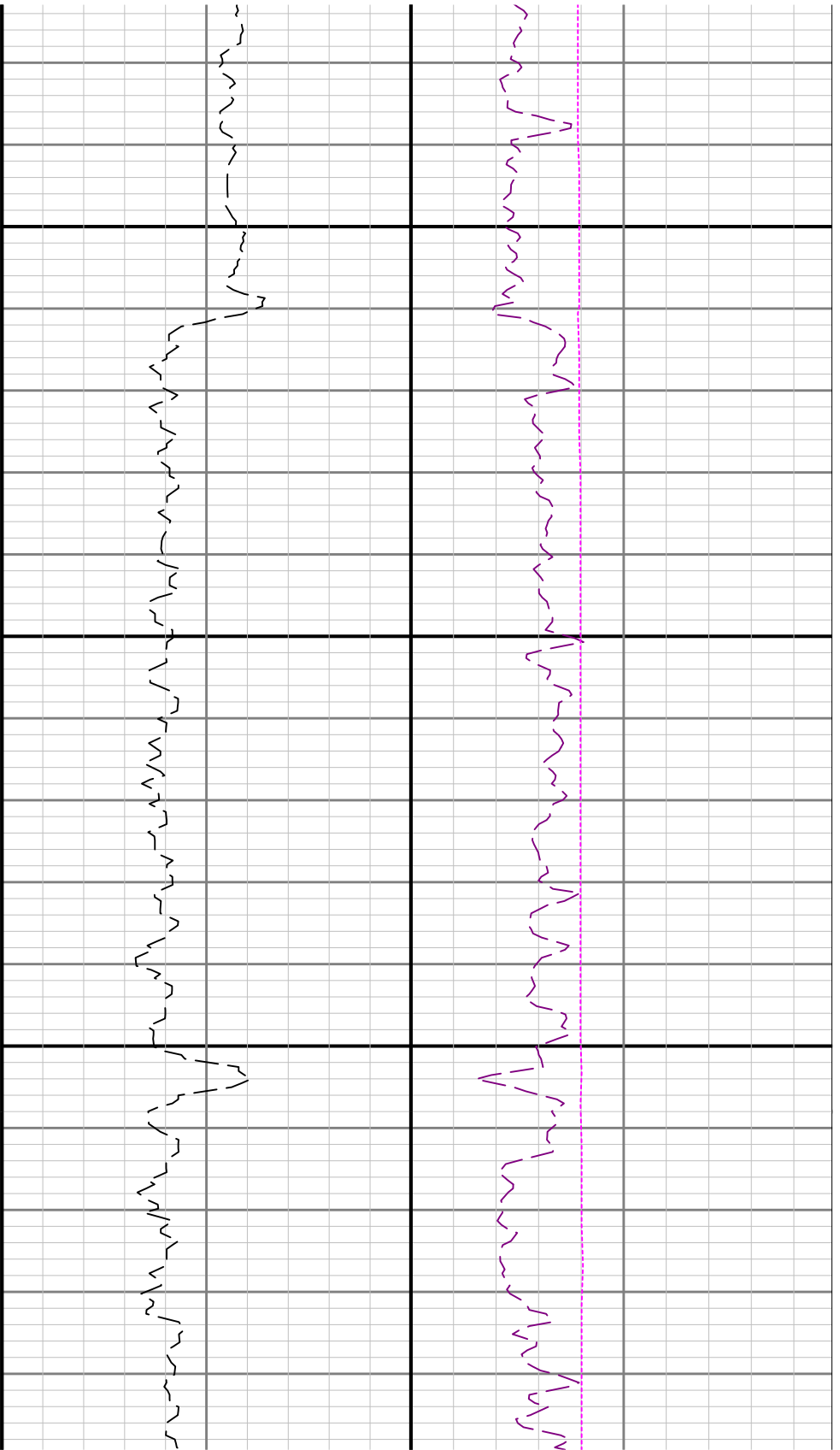




2500

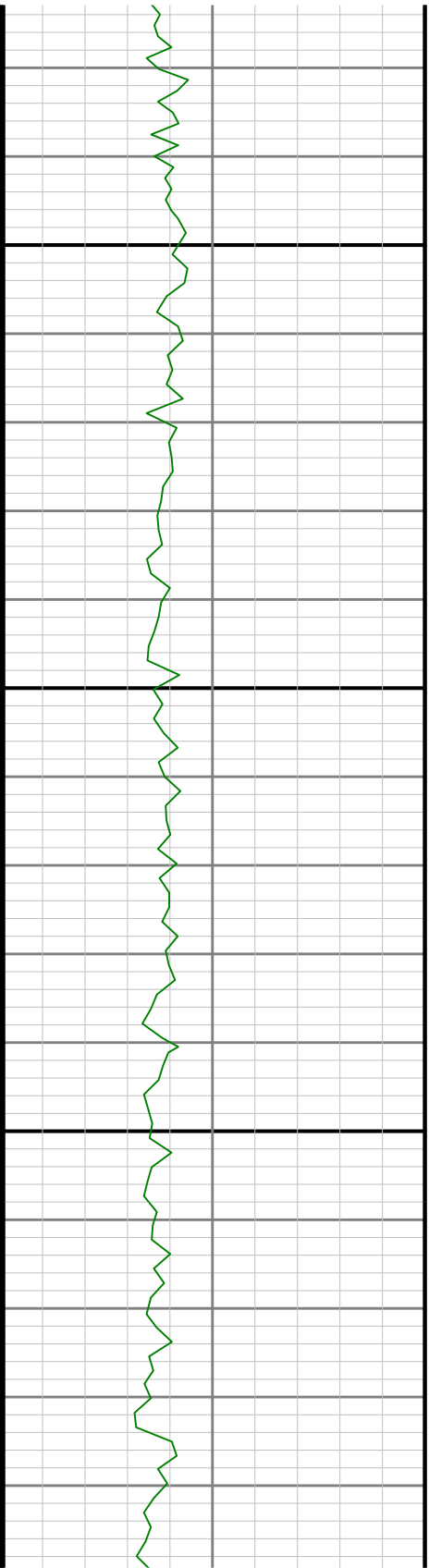
2600

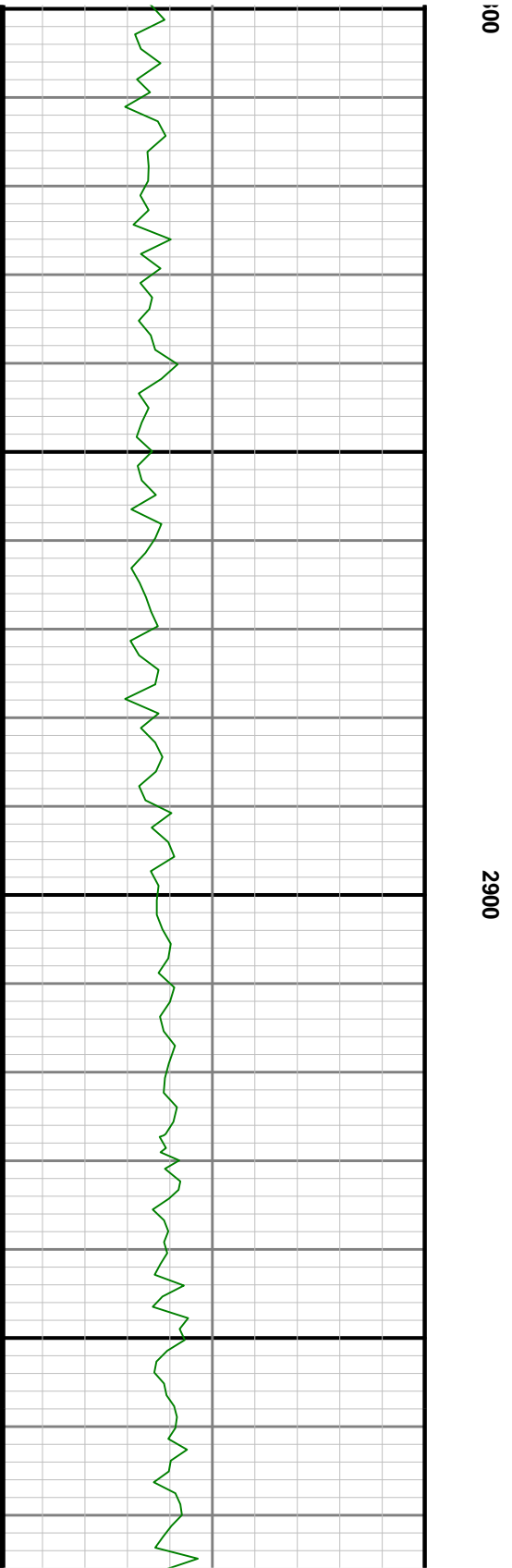
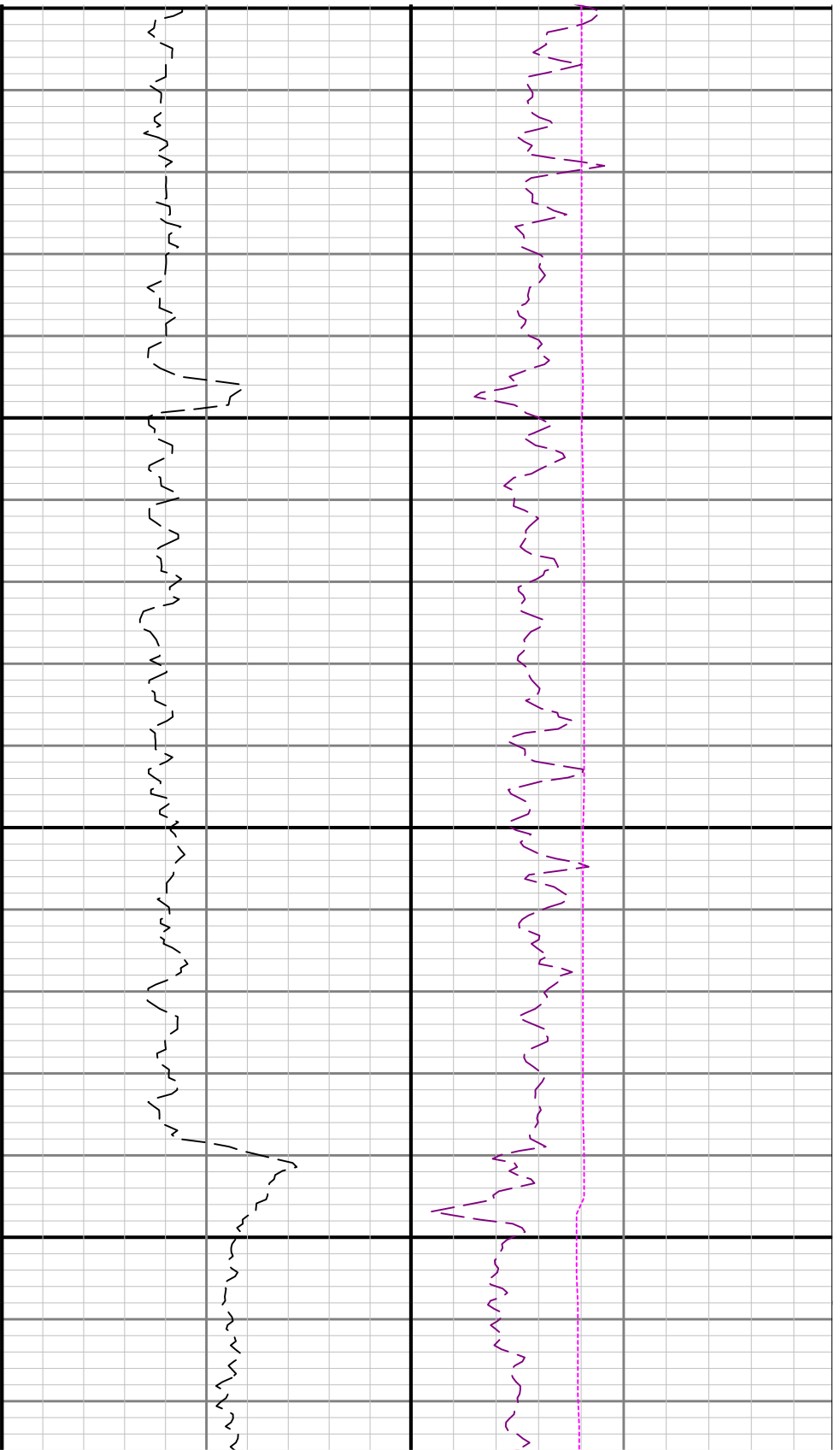


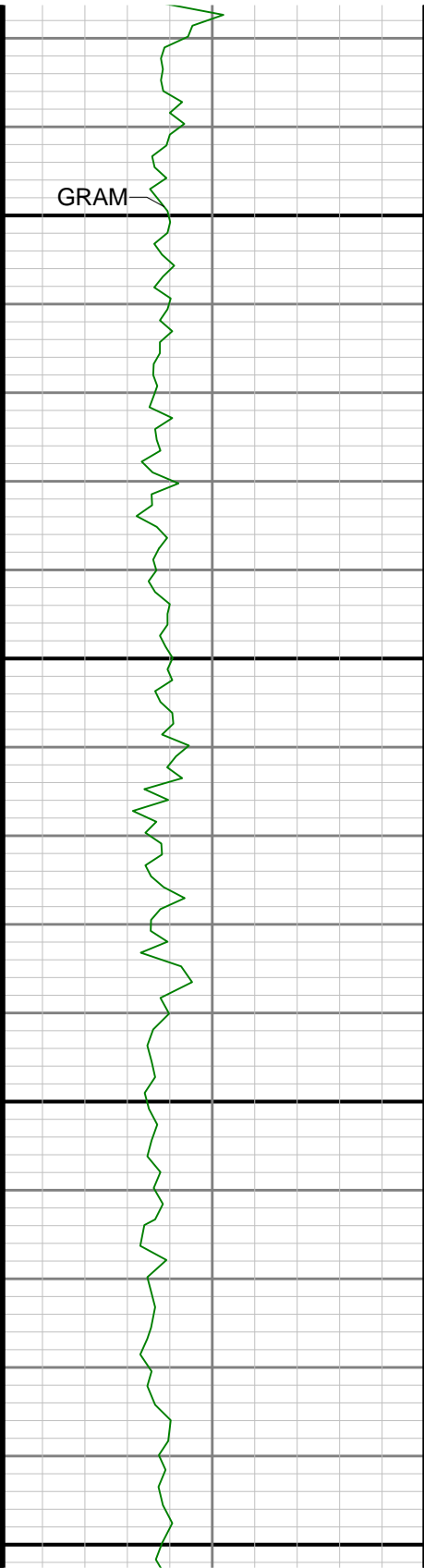


2700

28

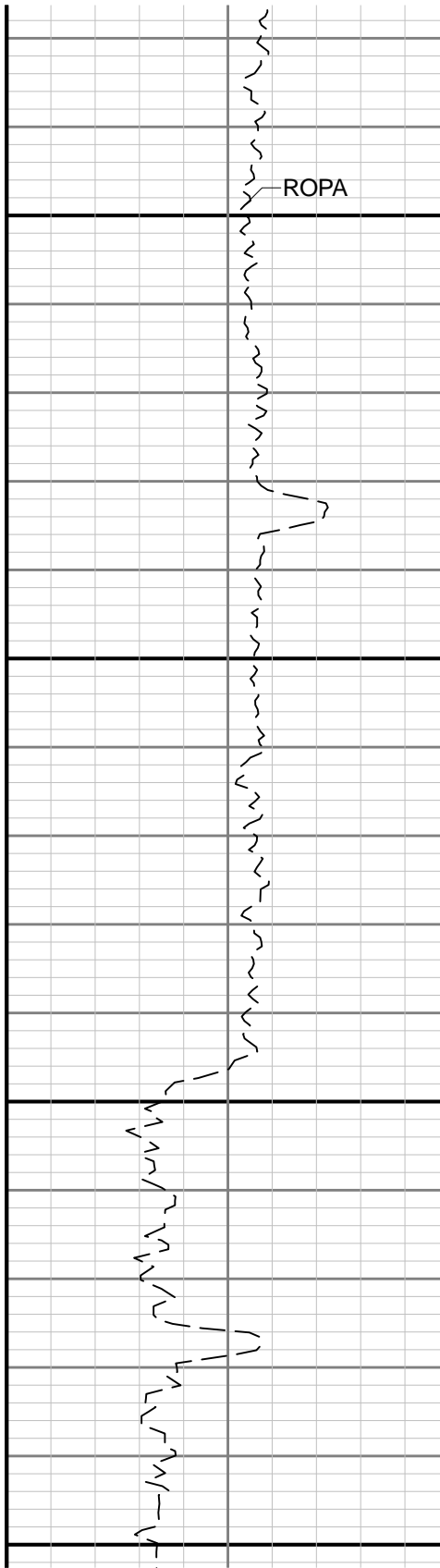






3000

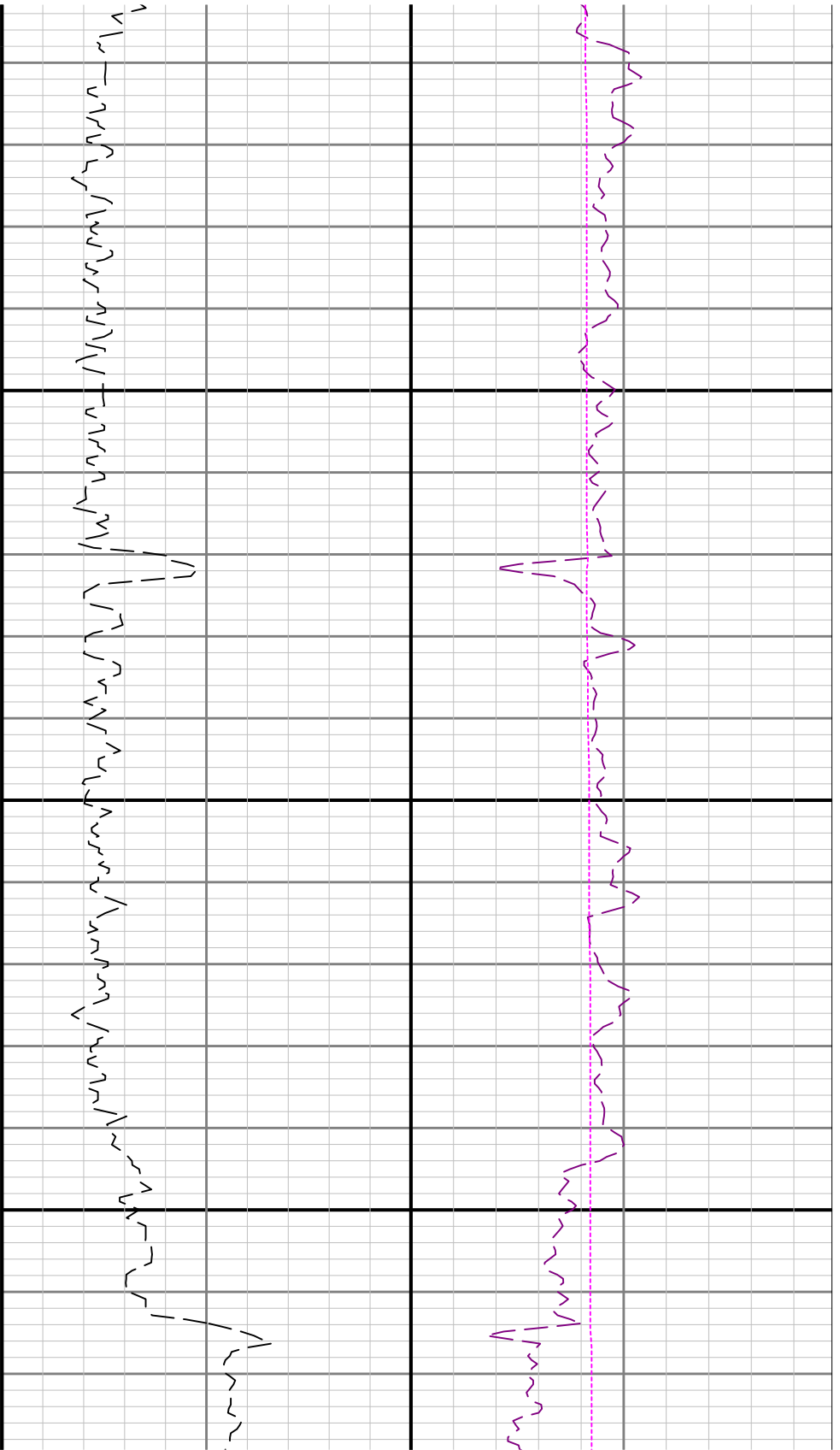
3100



WOBA

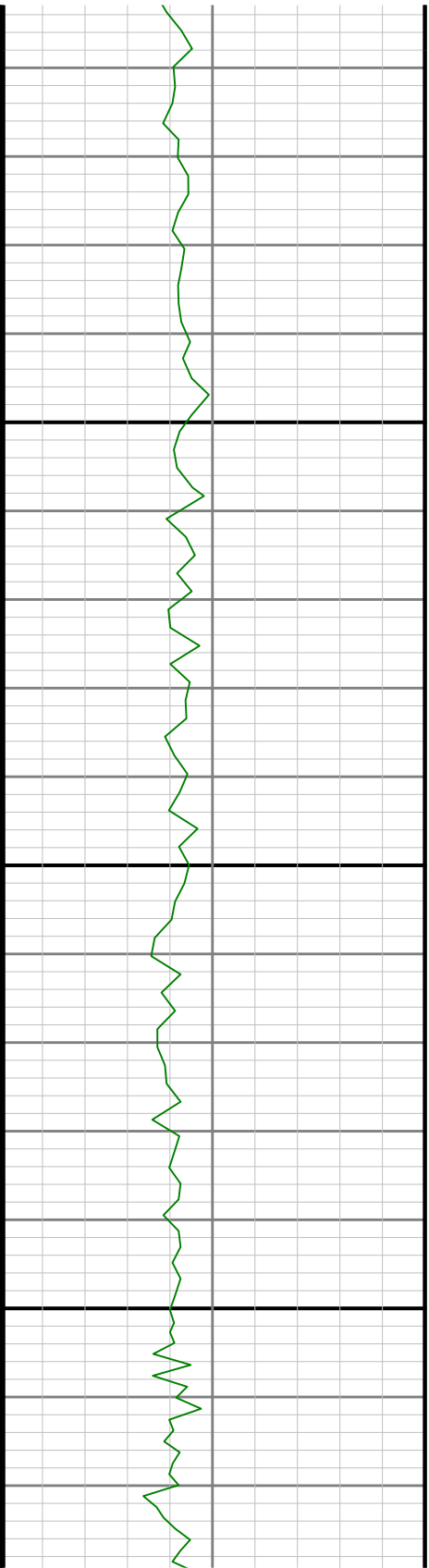
TCDM

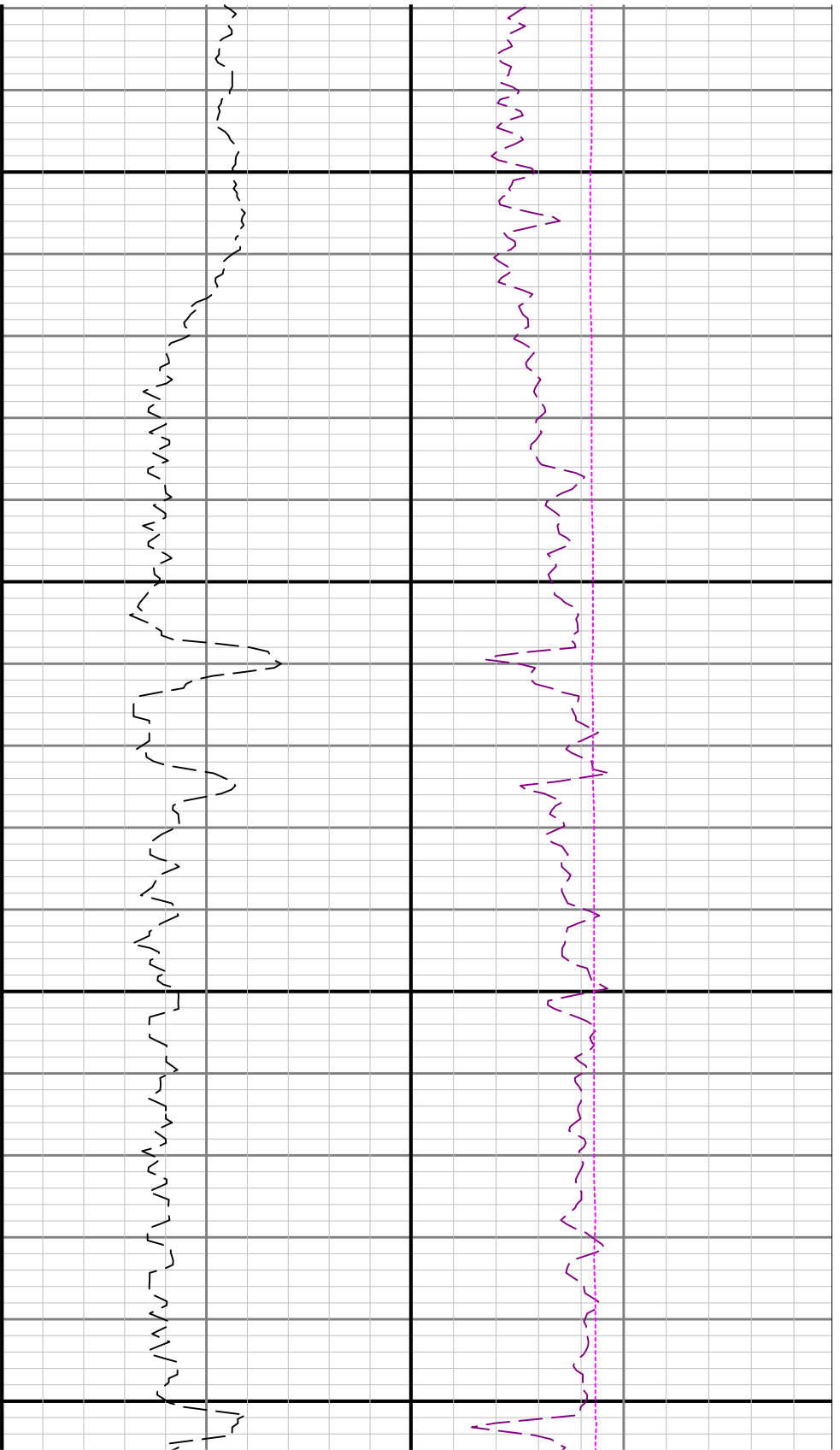




3200

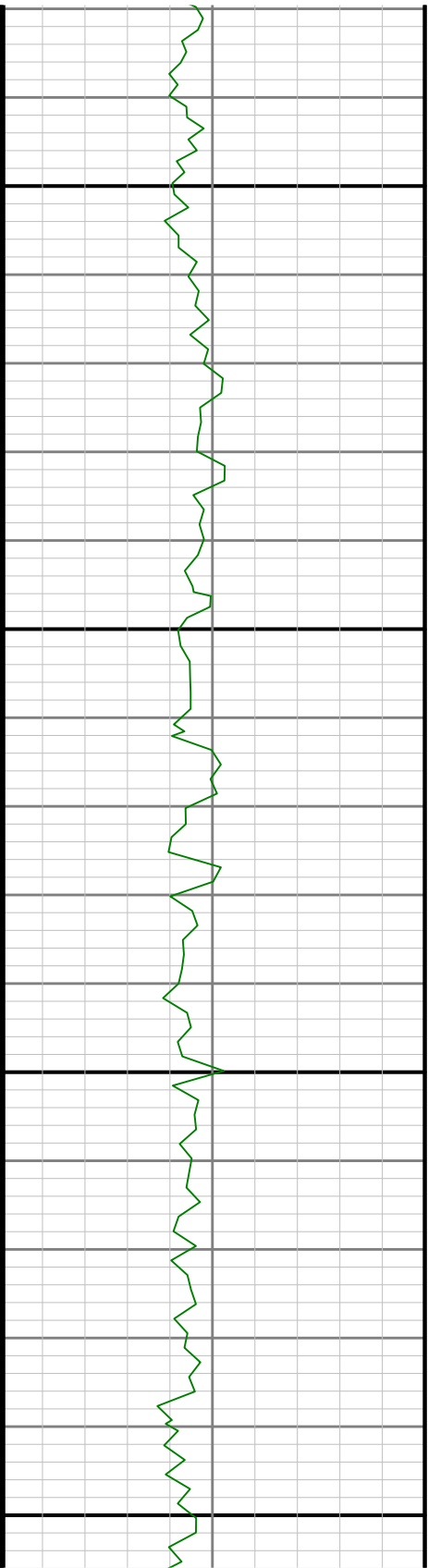
3300

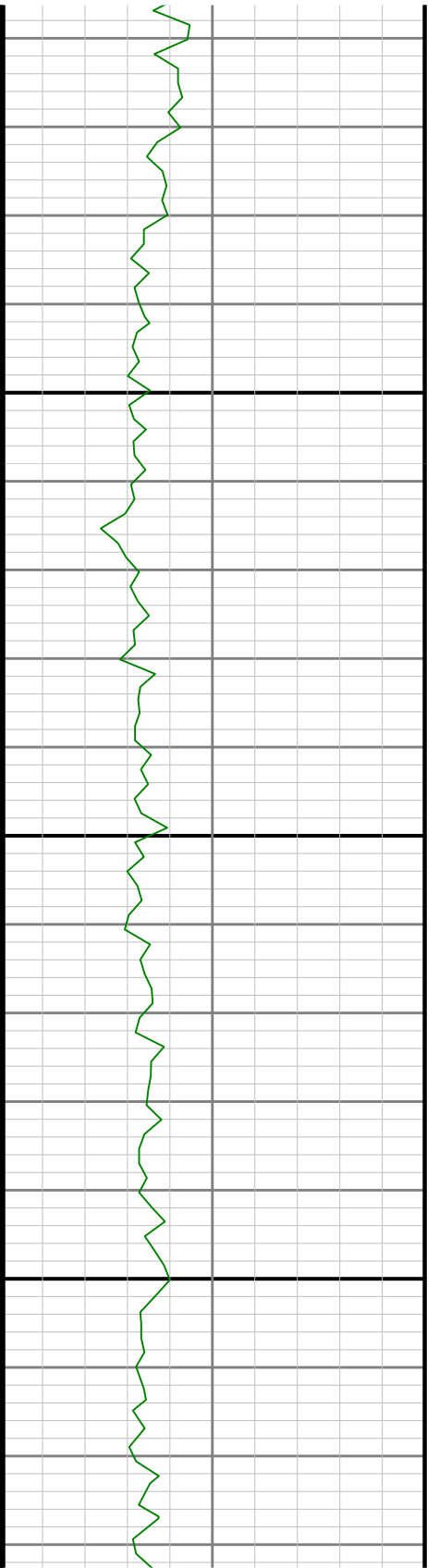
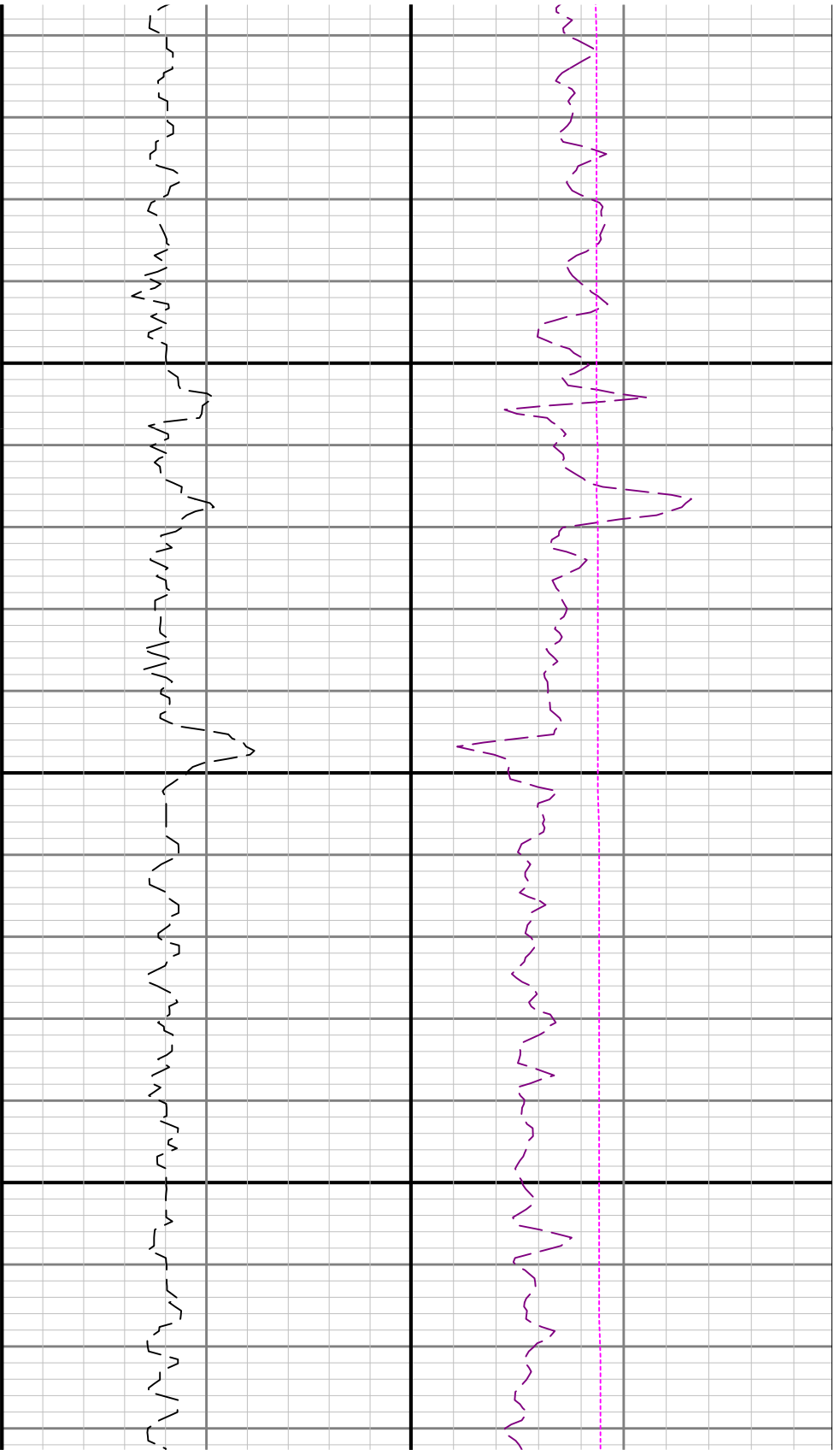


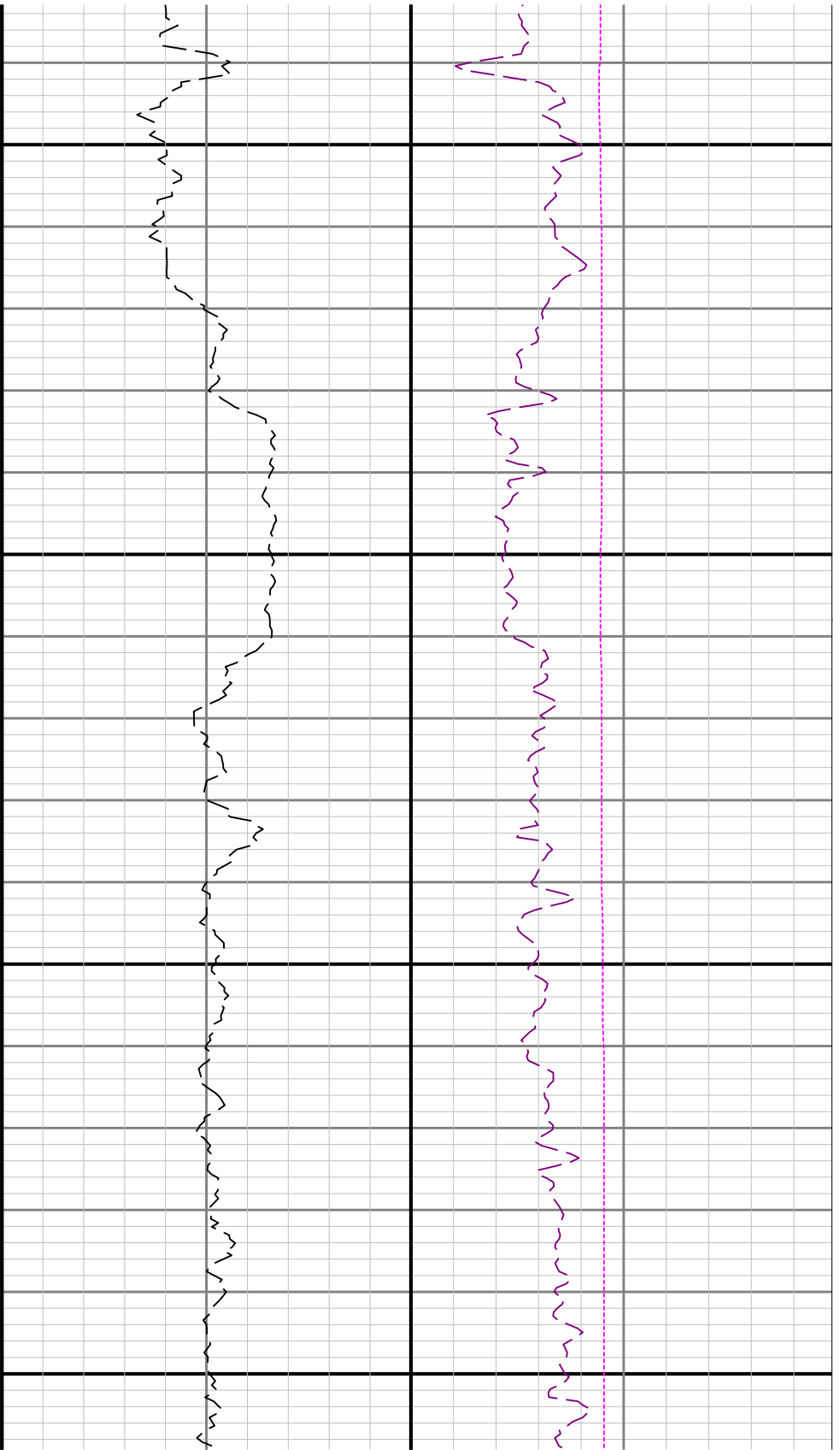


3400

3500

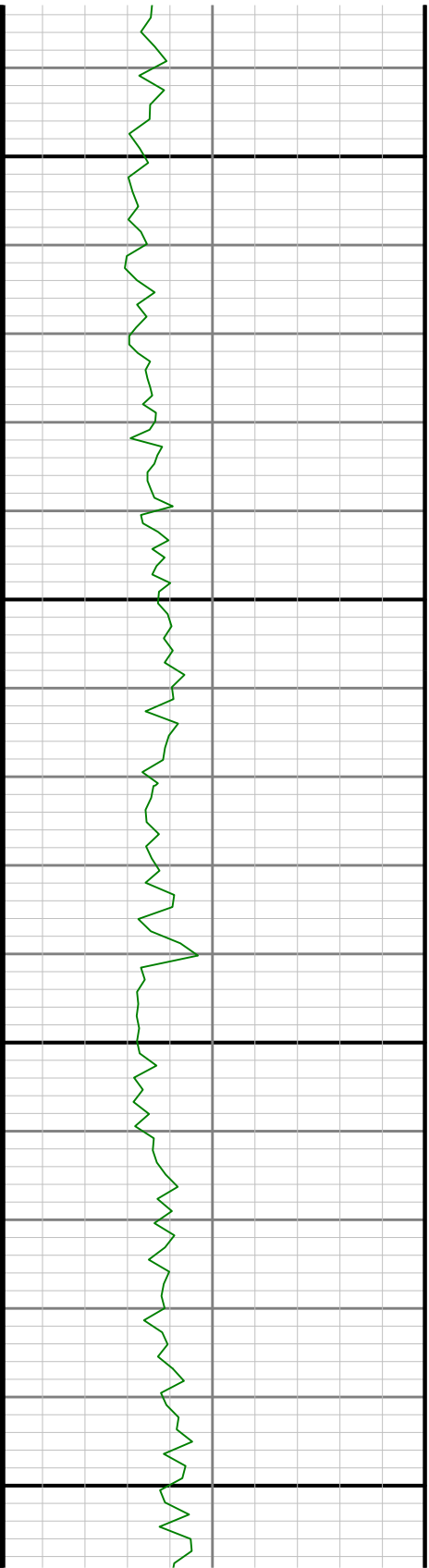


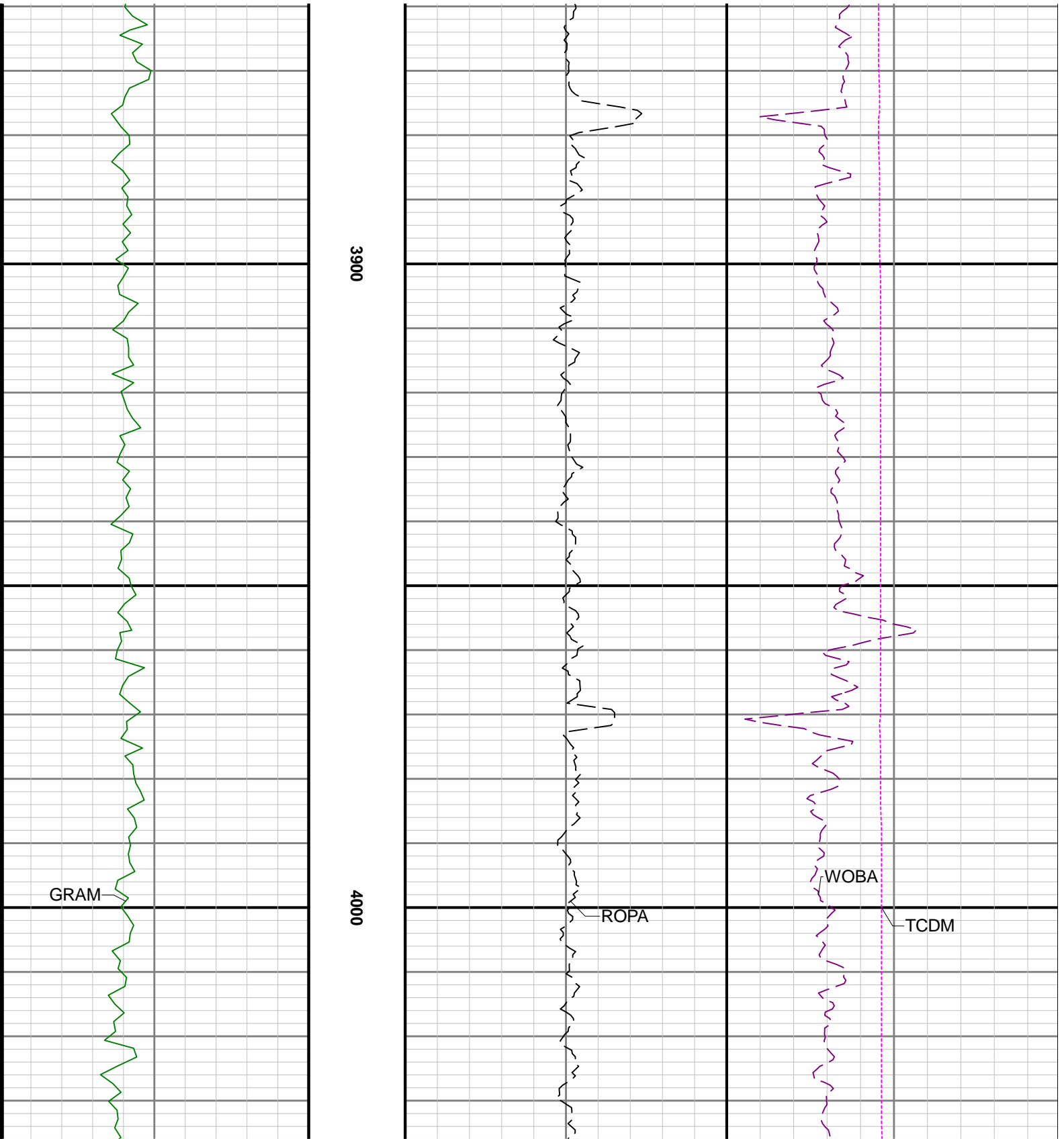


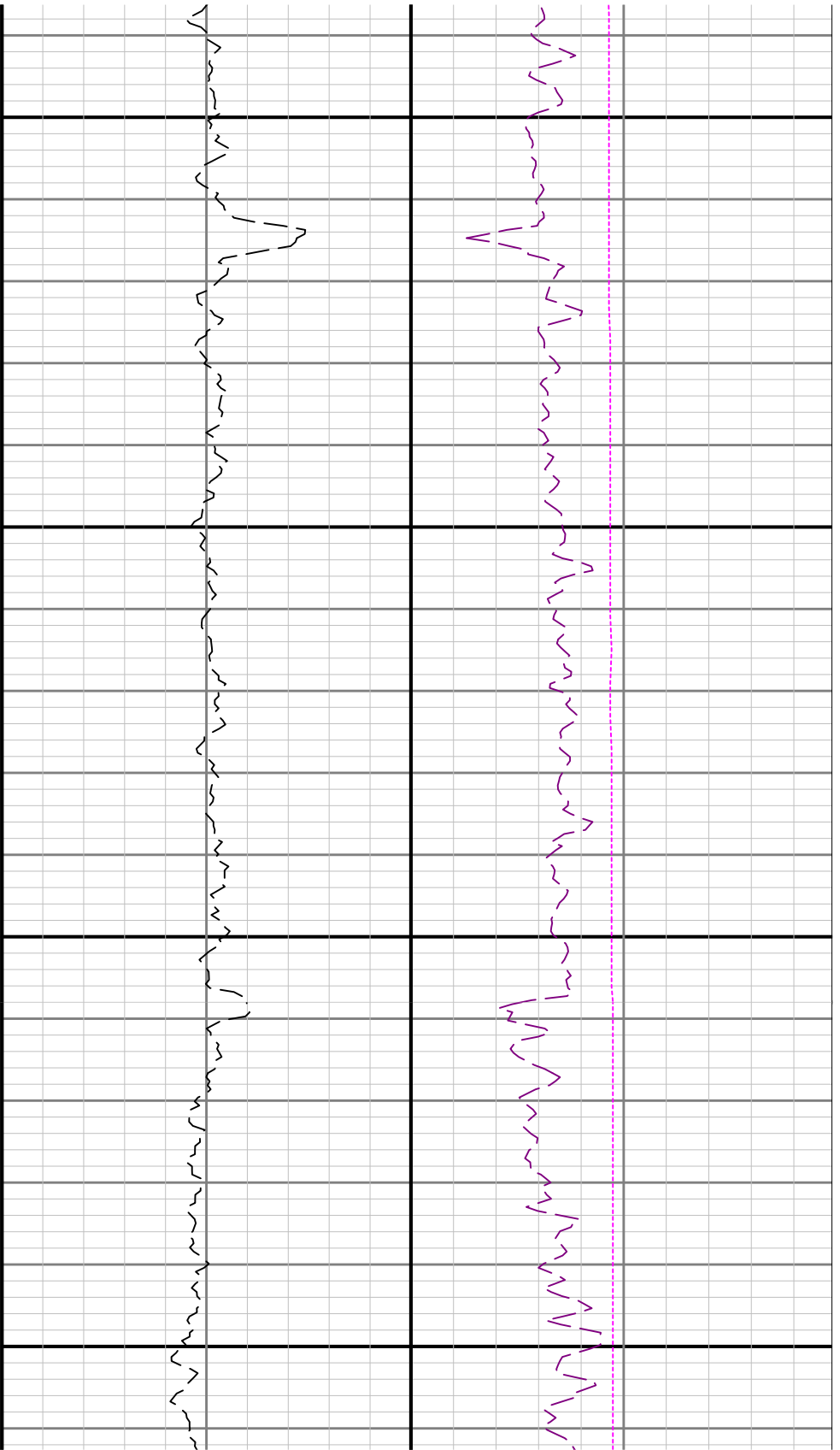


3700

3800

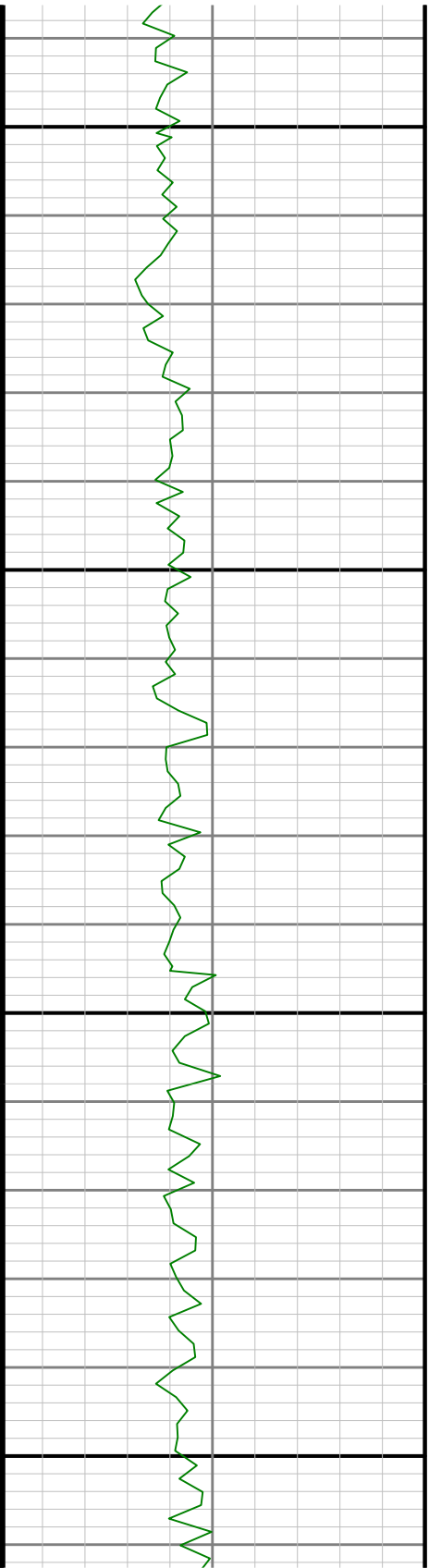


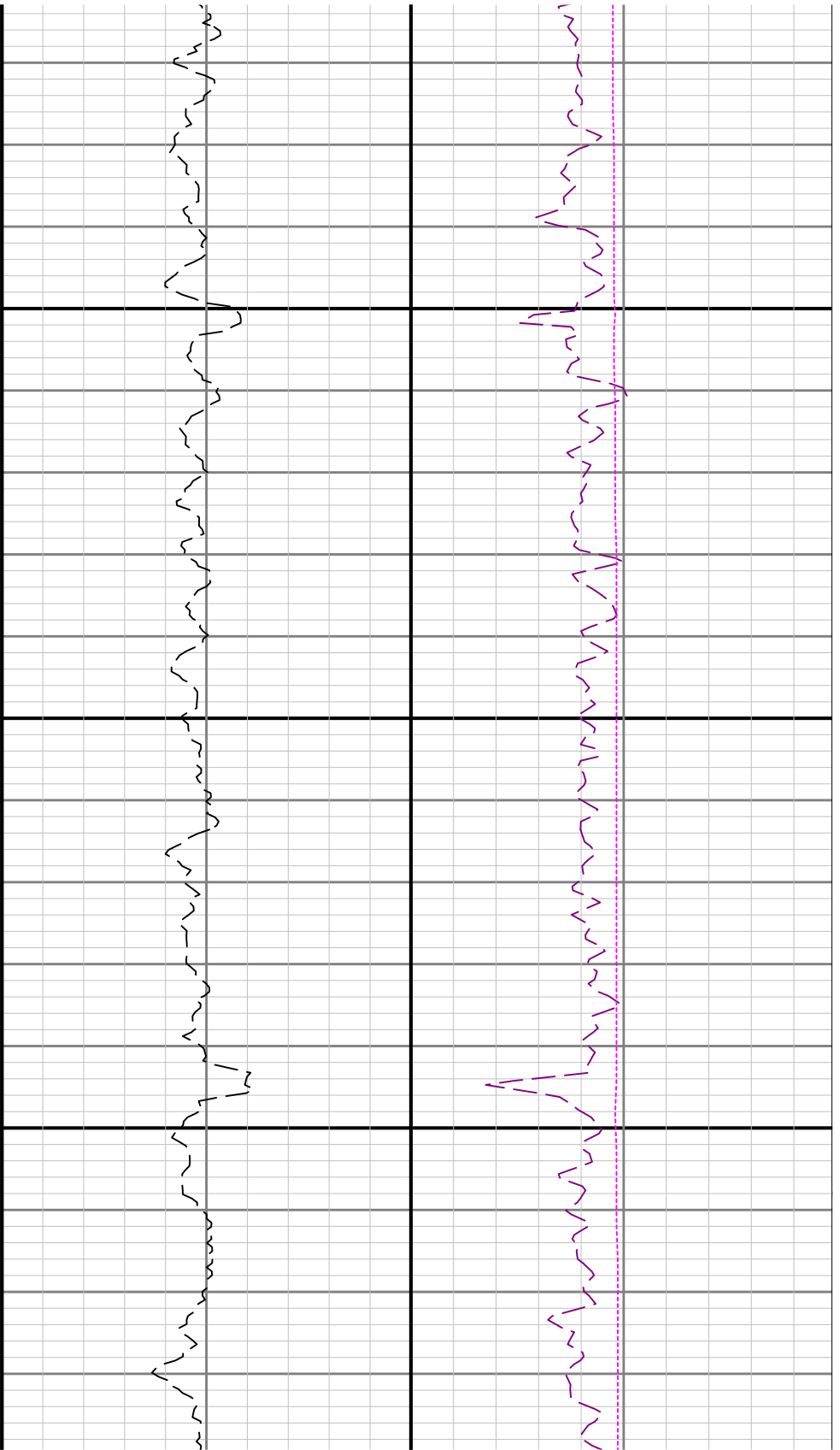




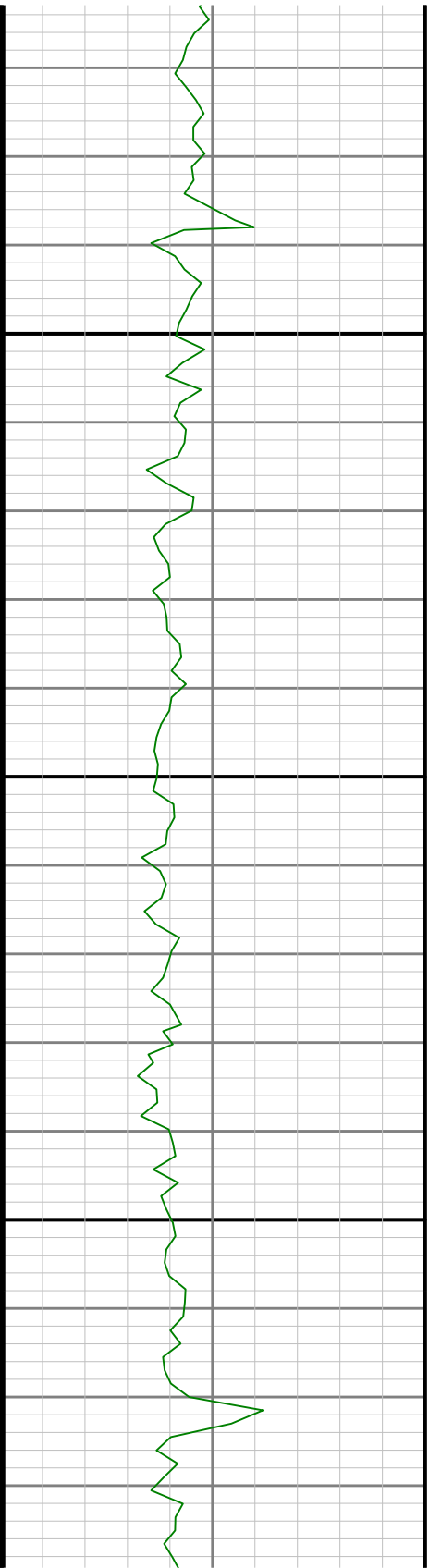
4100

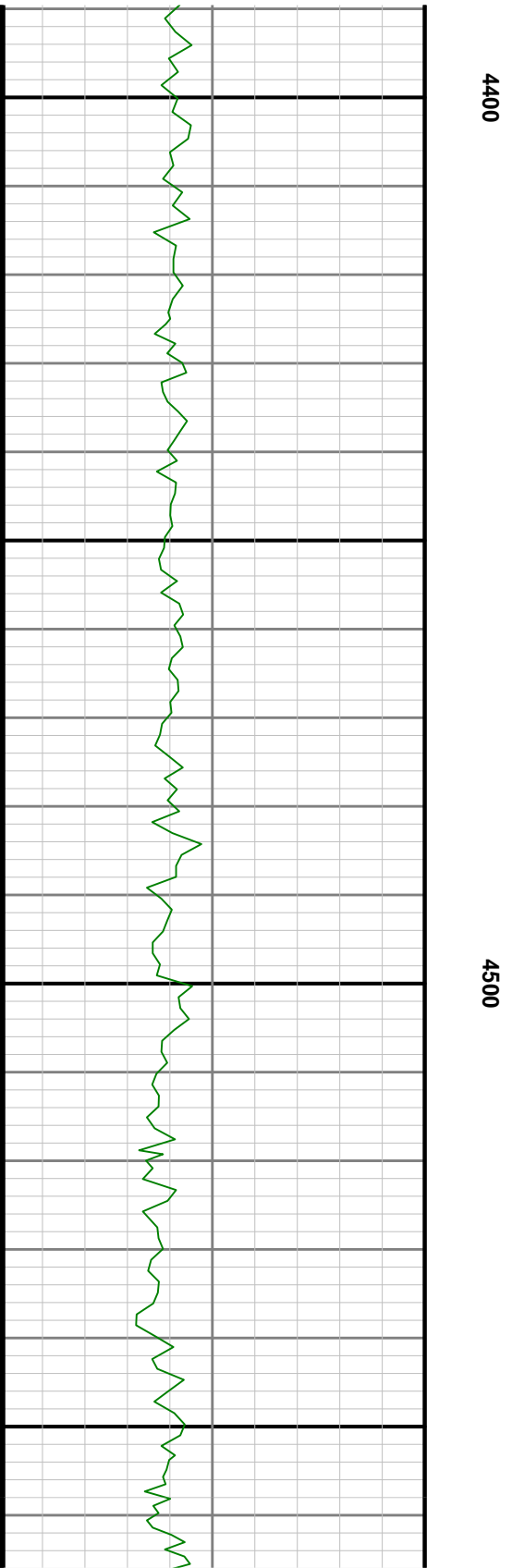
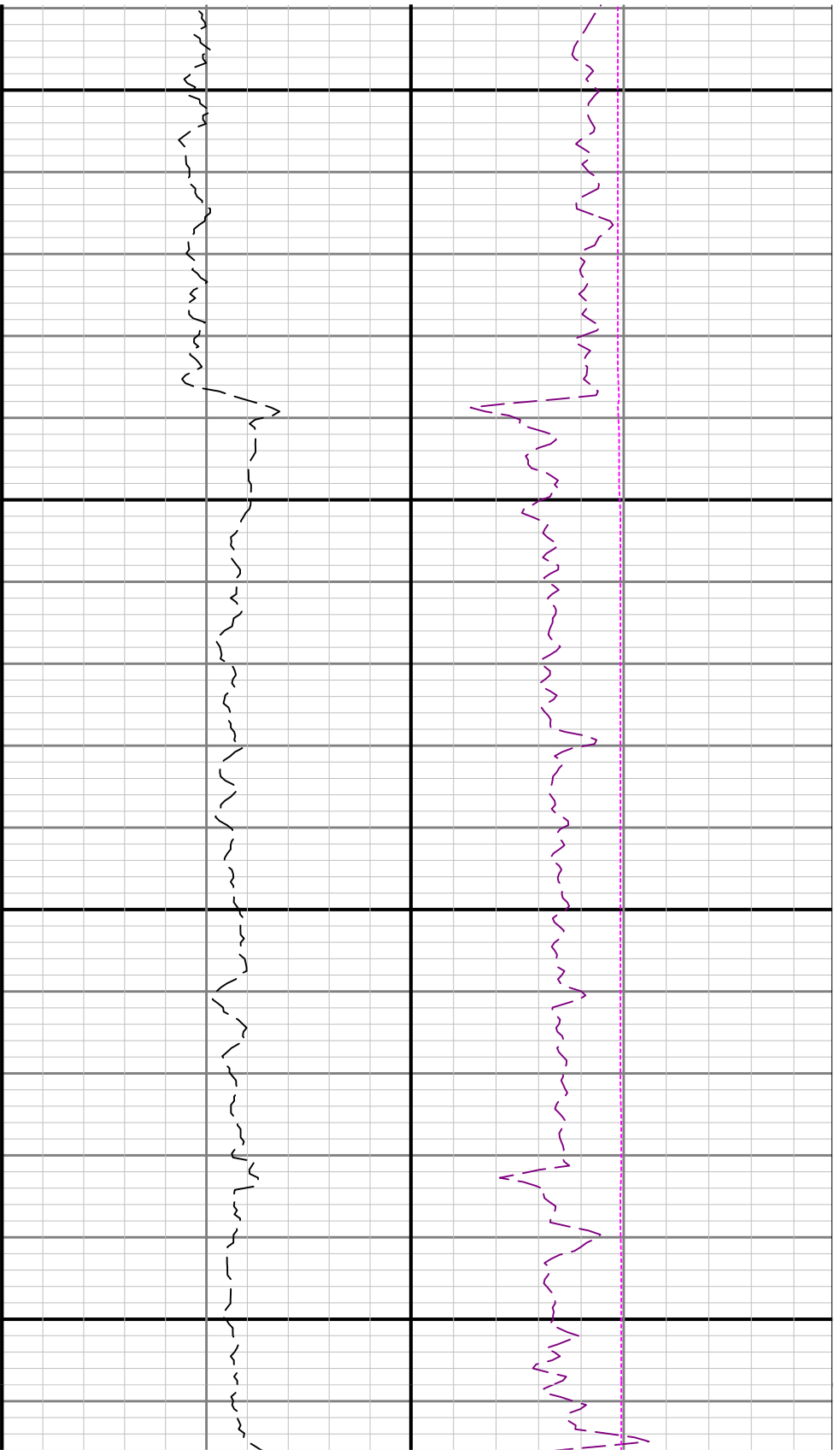
4200

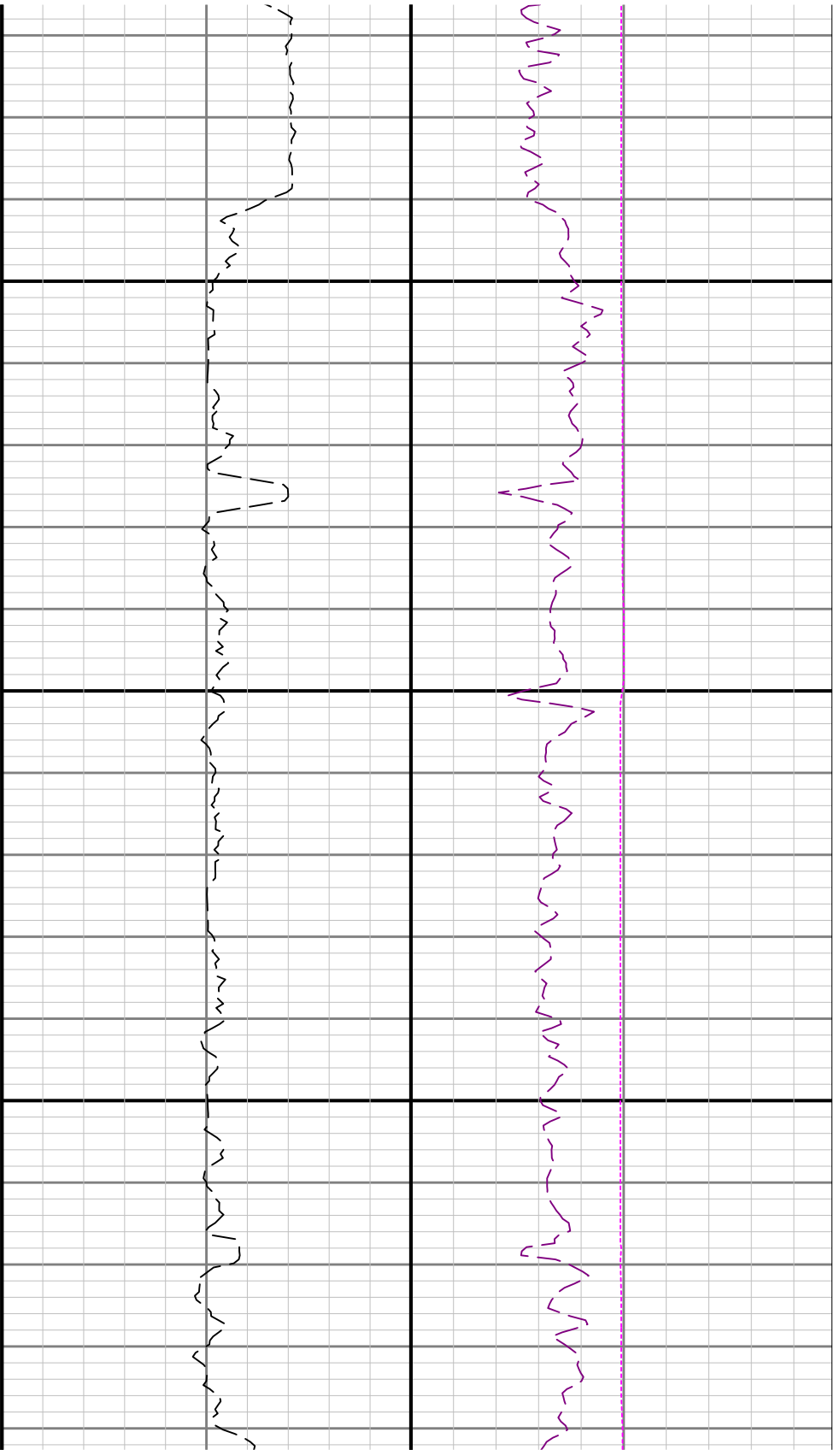




4300

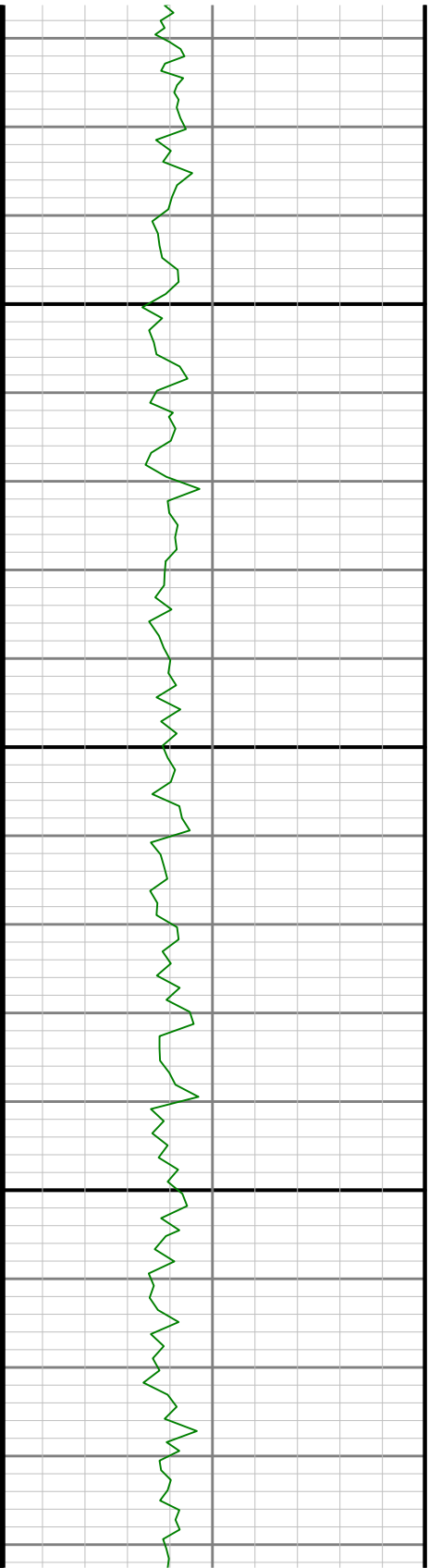


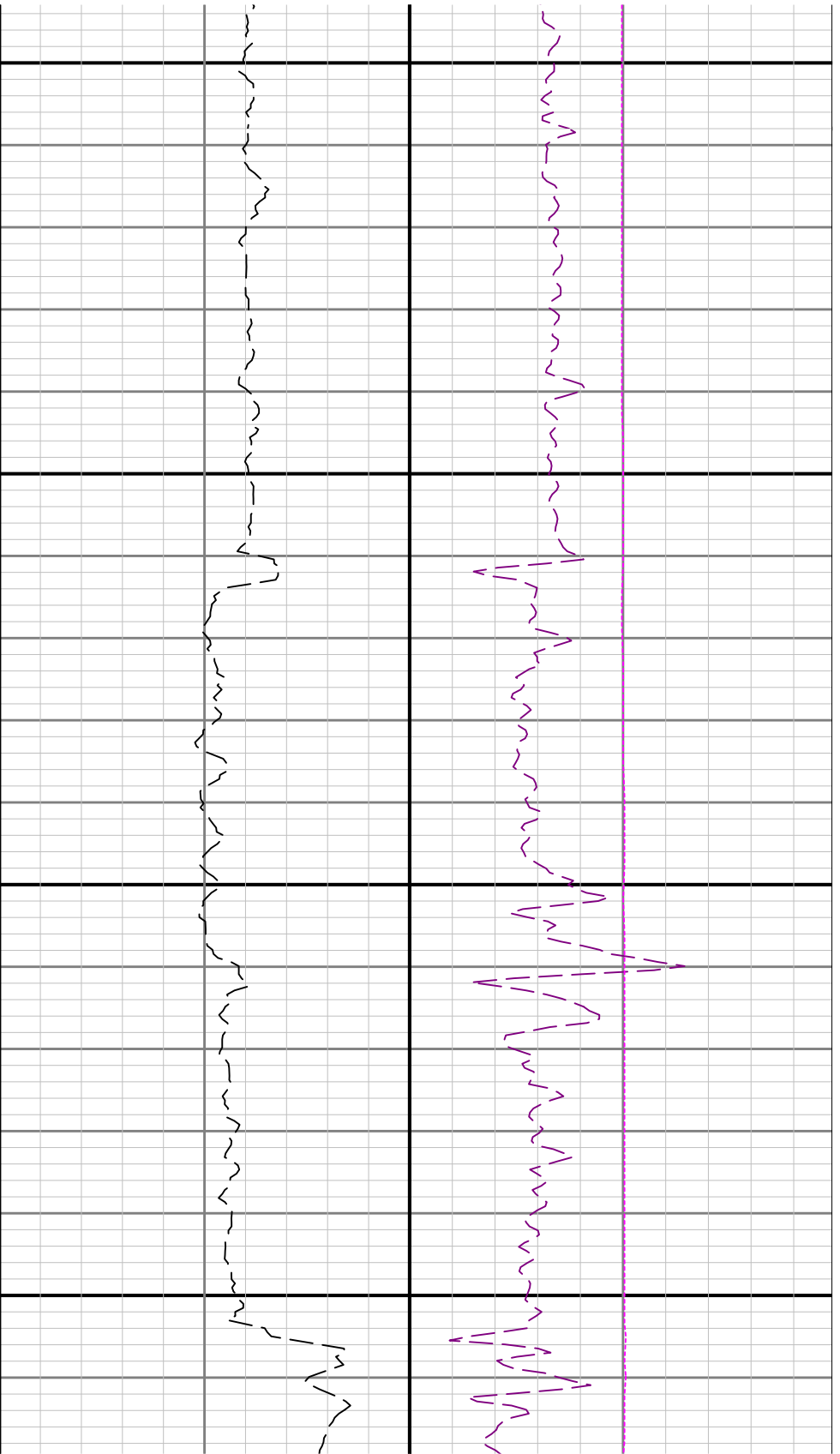




4600

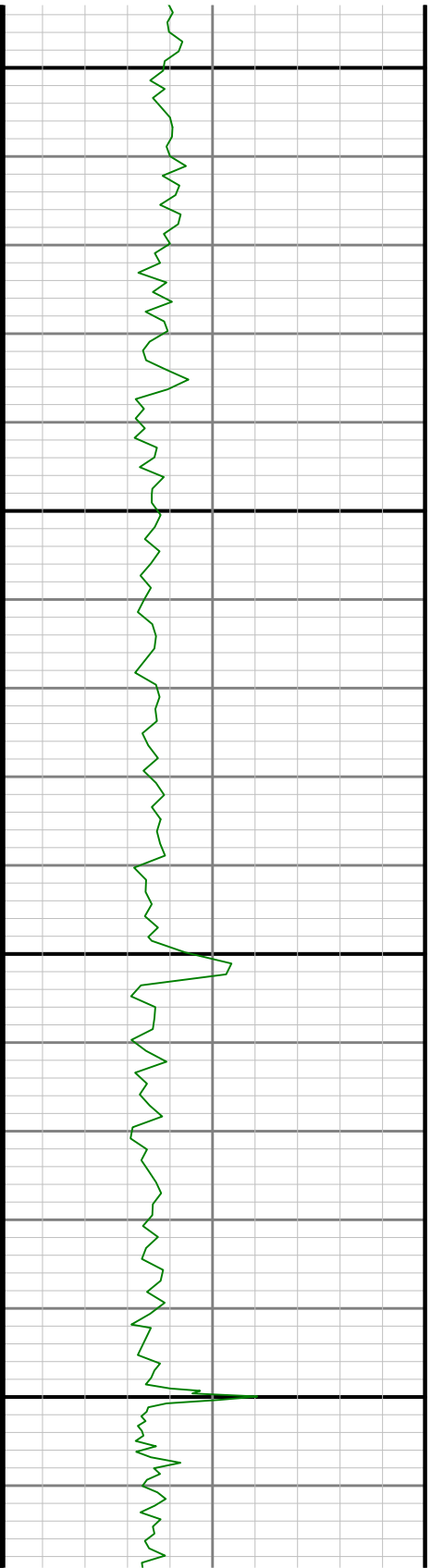
4700

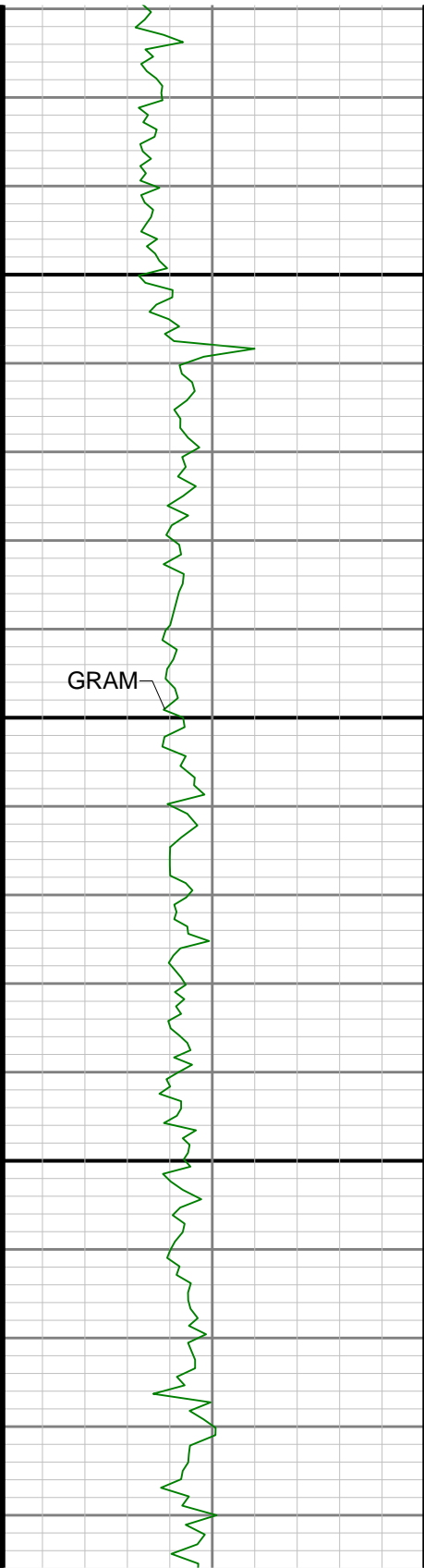




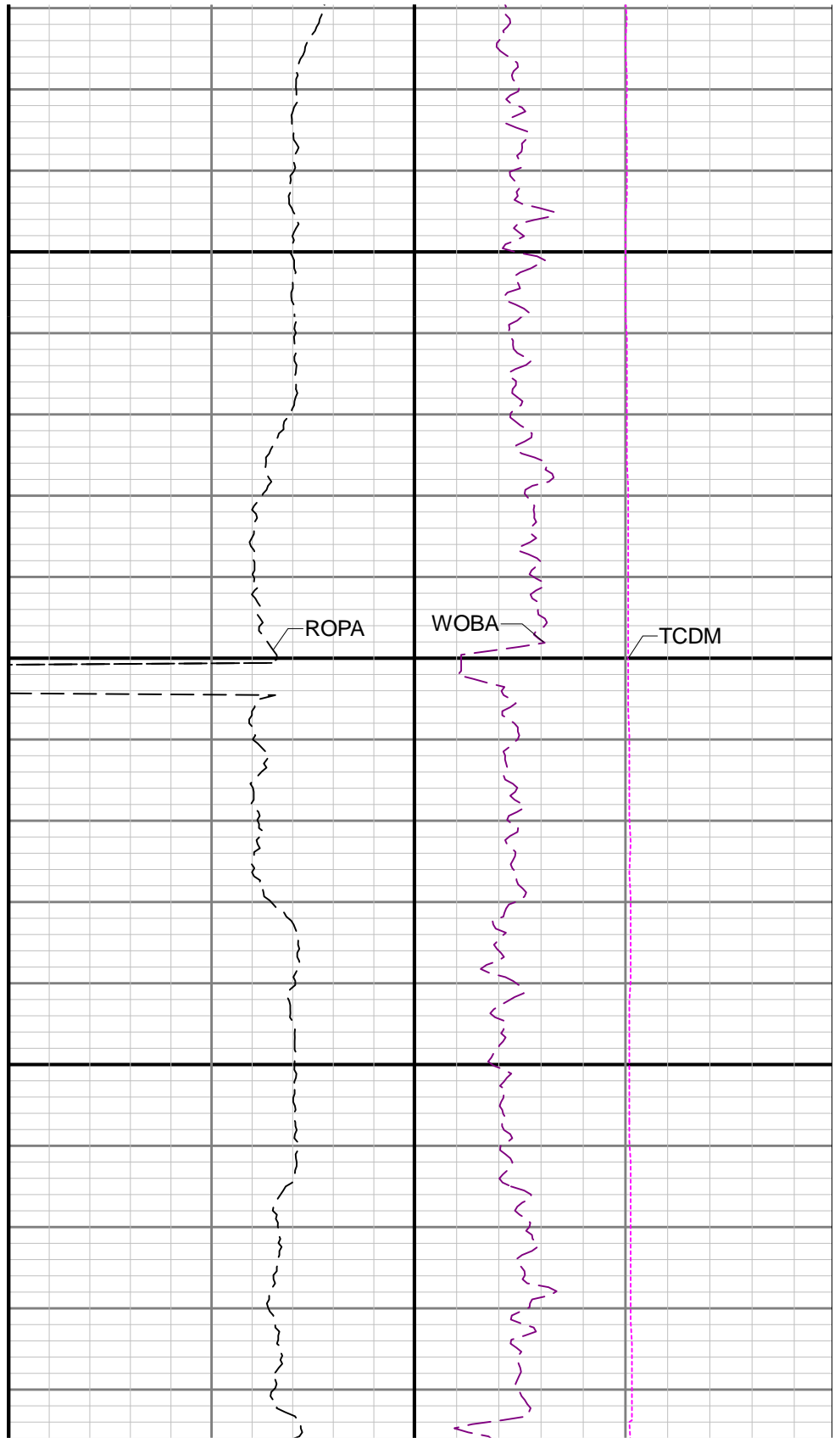
4800

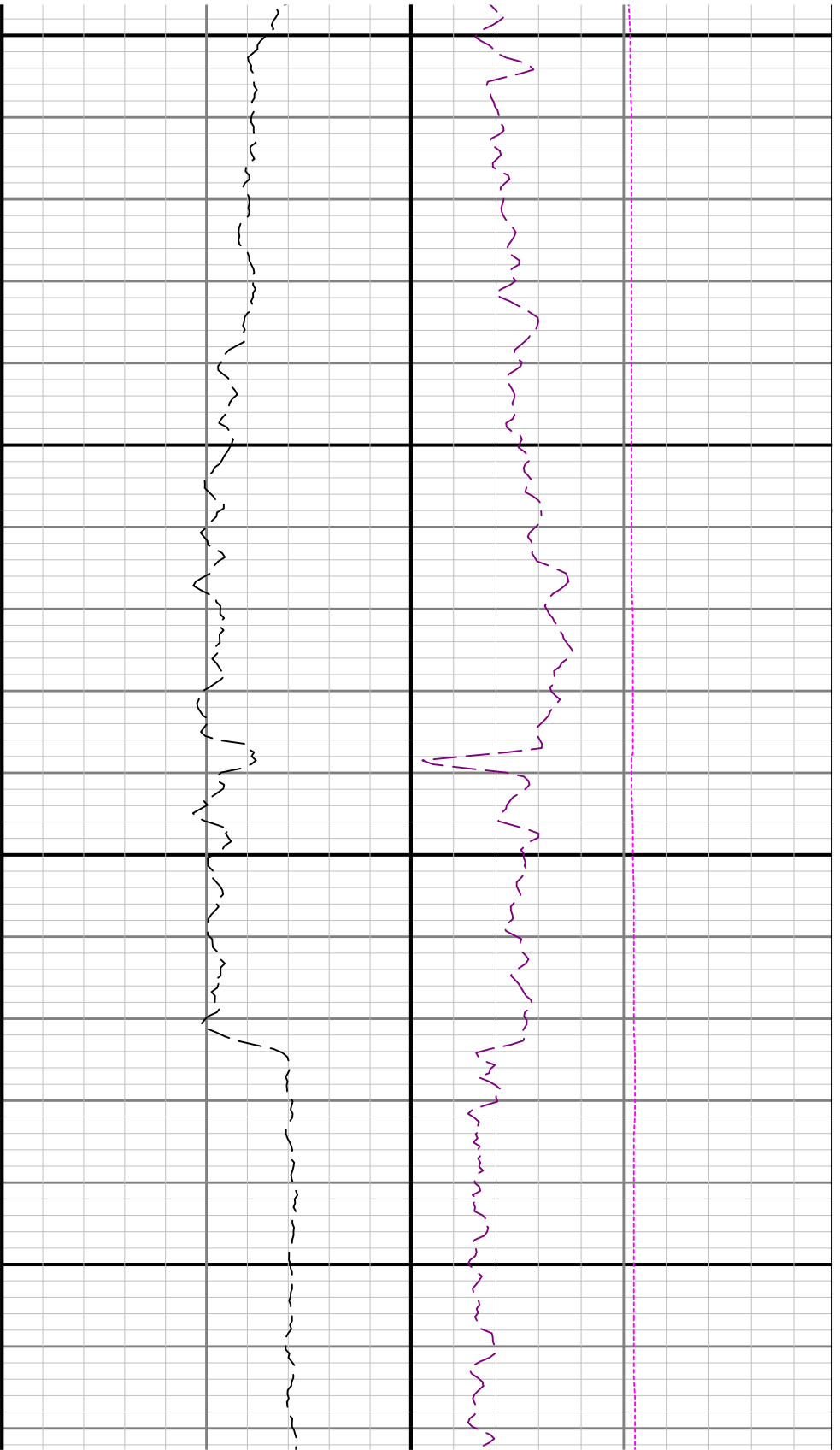
4900





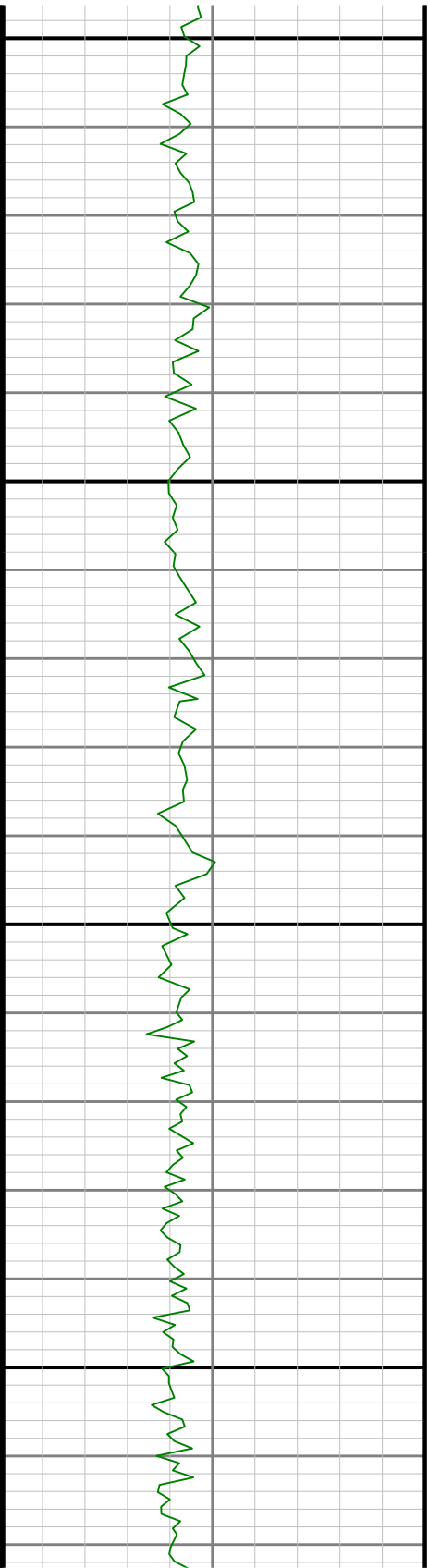
5000





5100

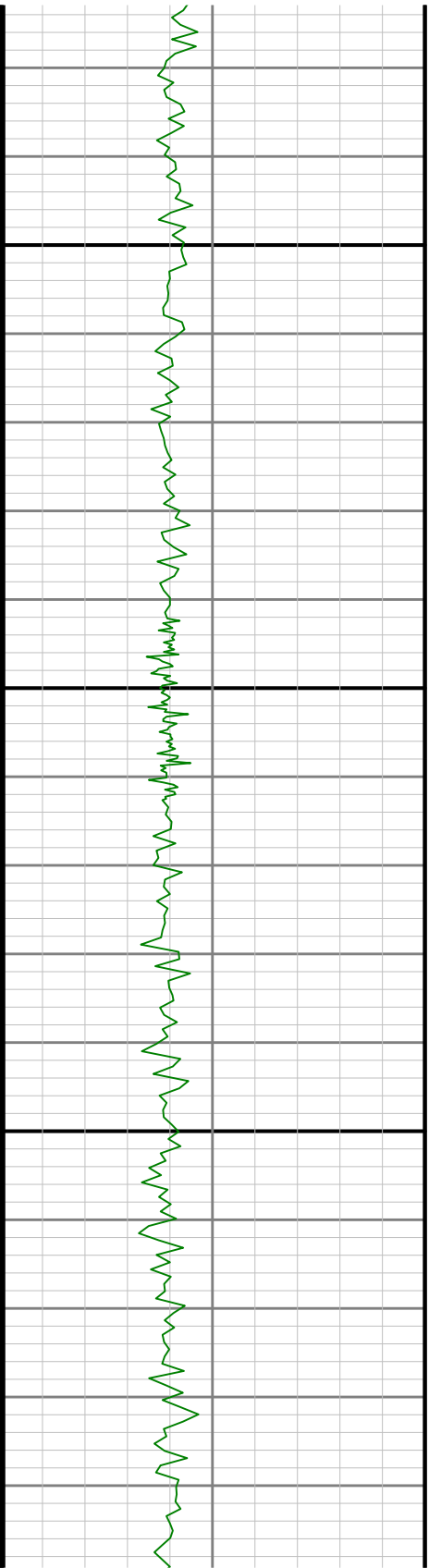
5200

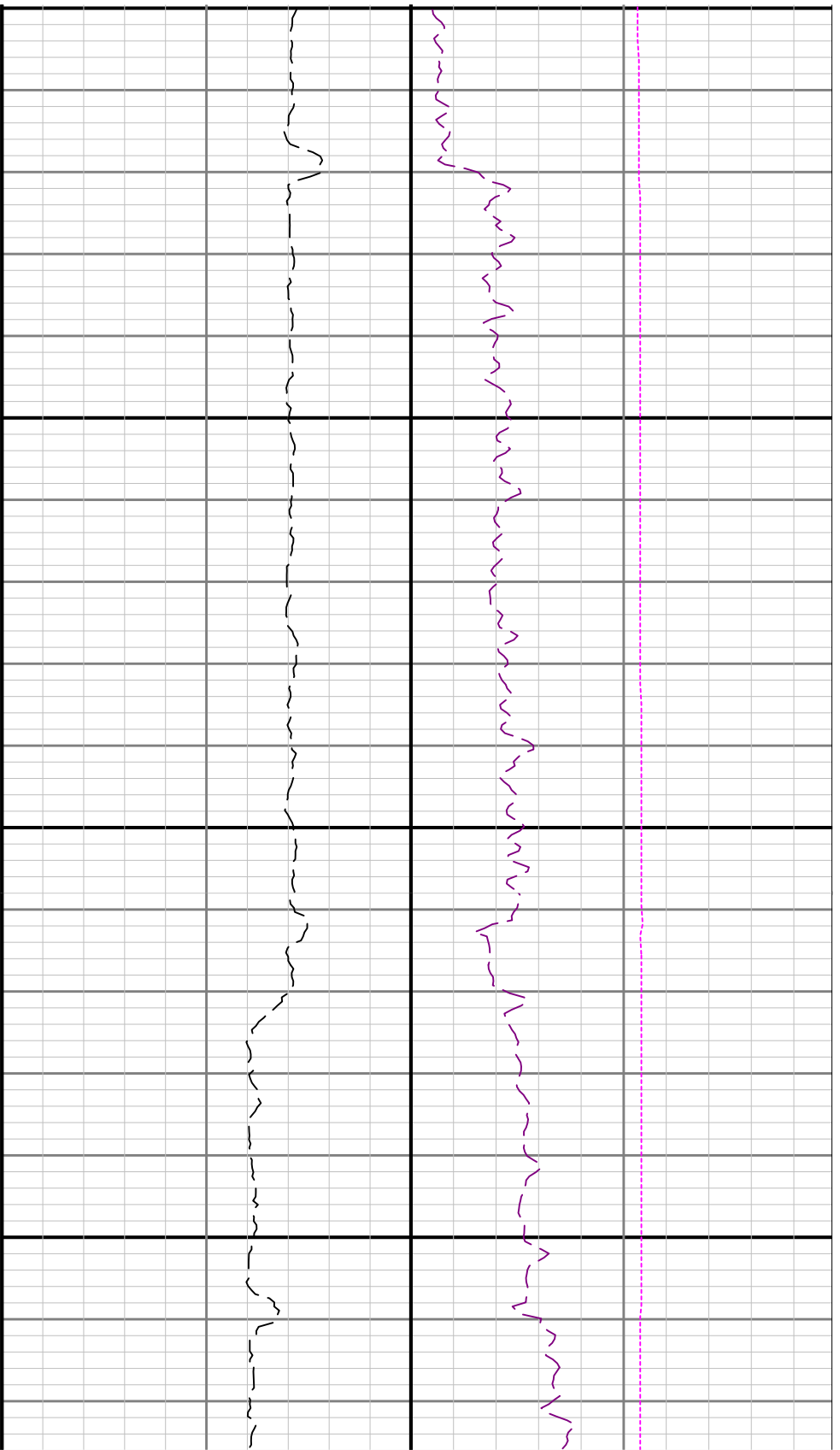




5300

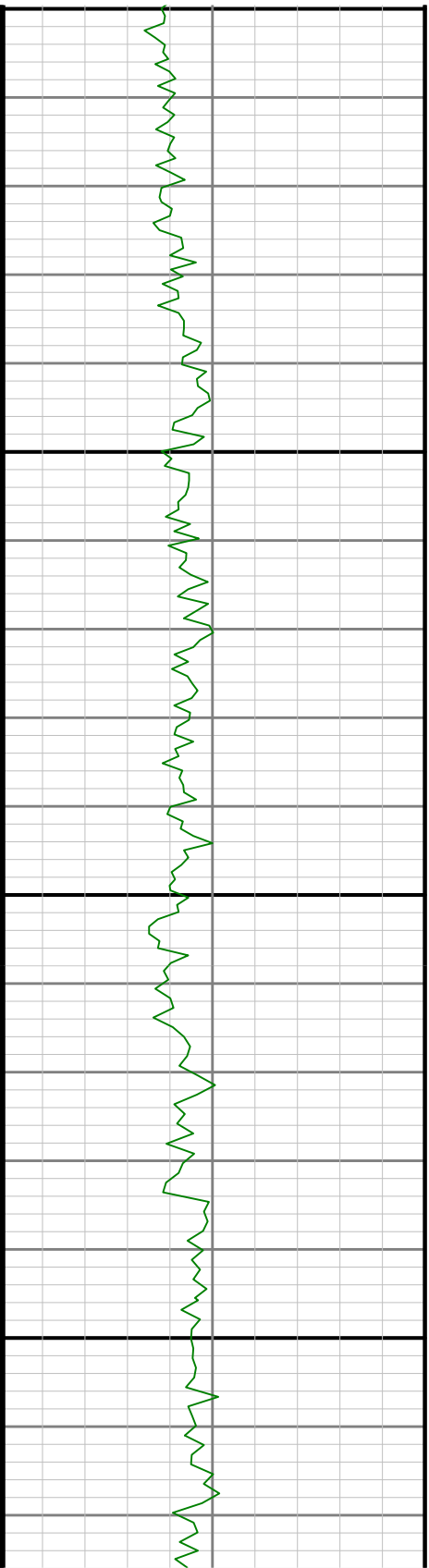
5400

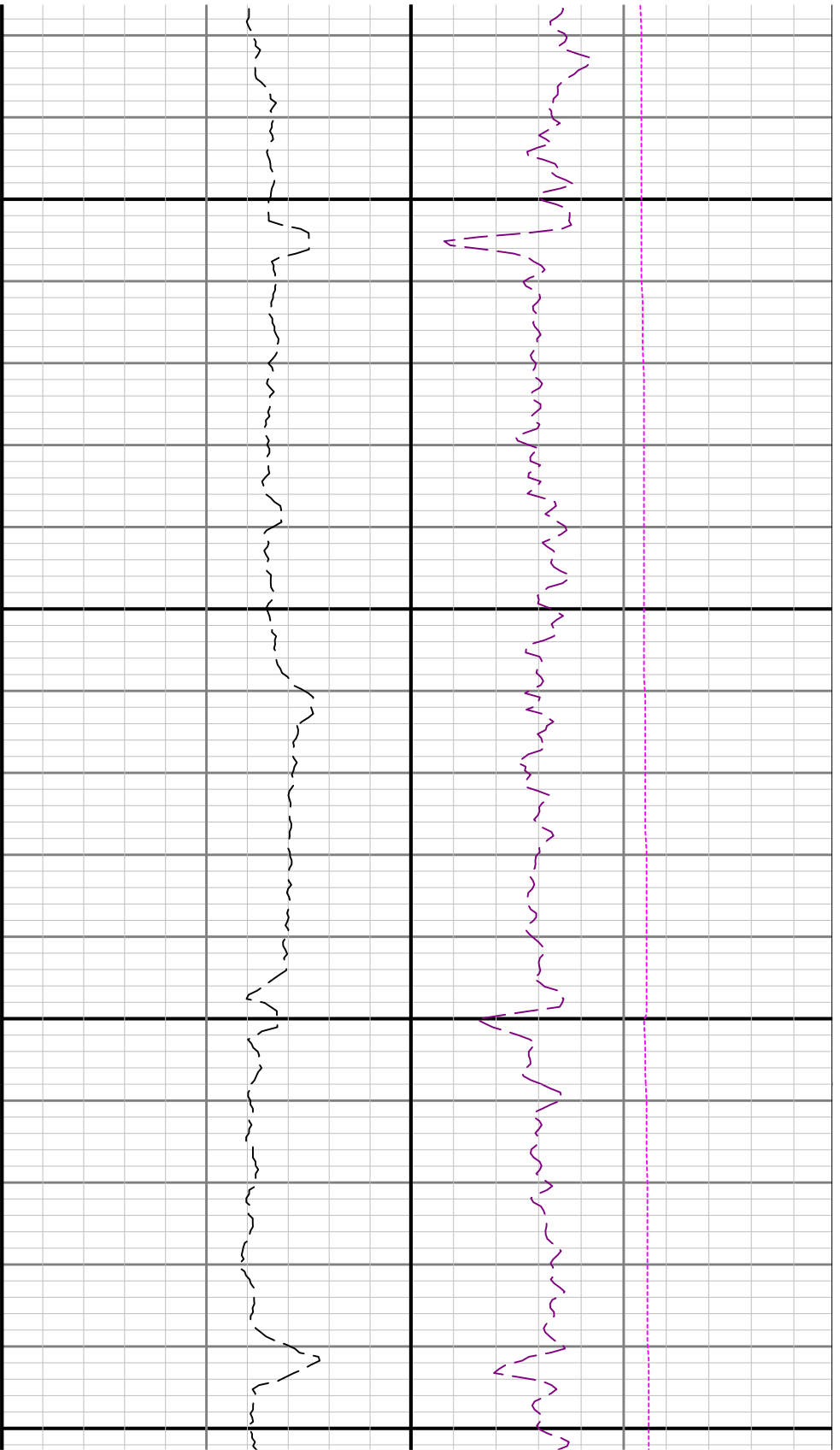




5500

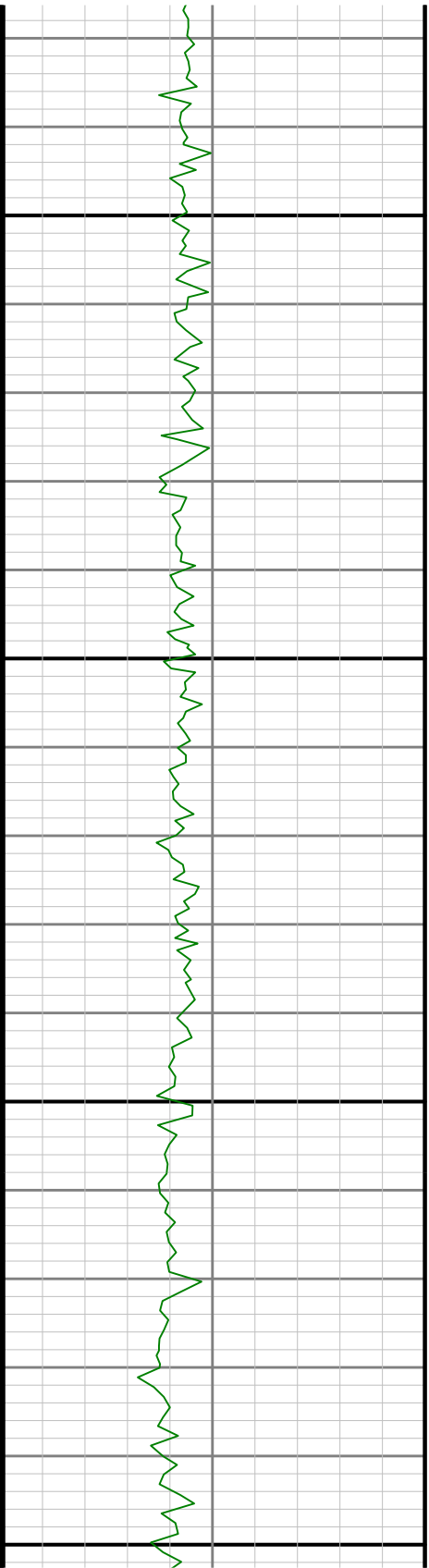
5600

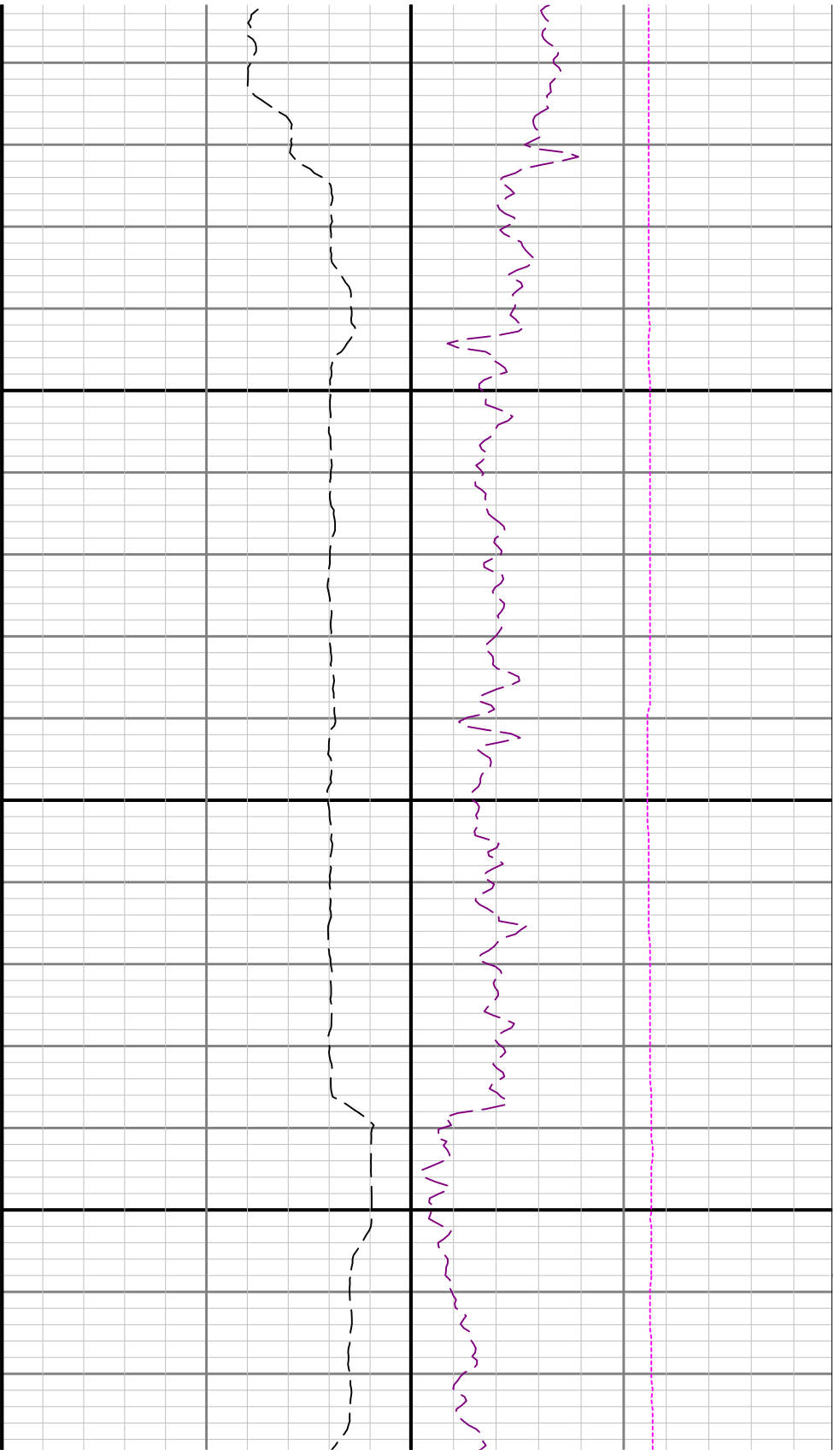




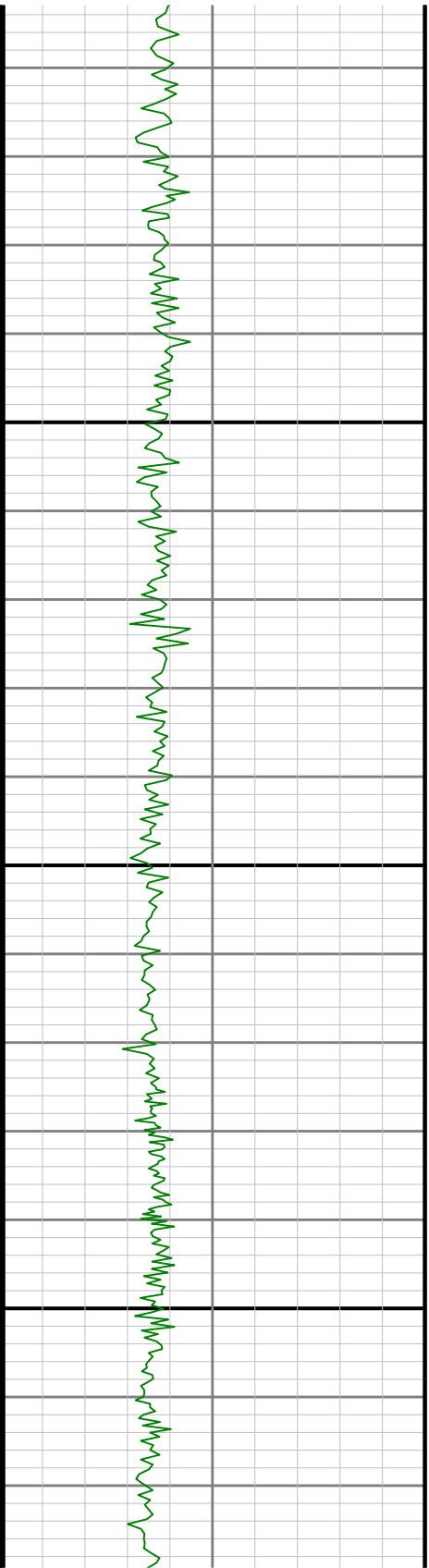
5700

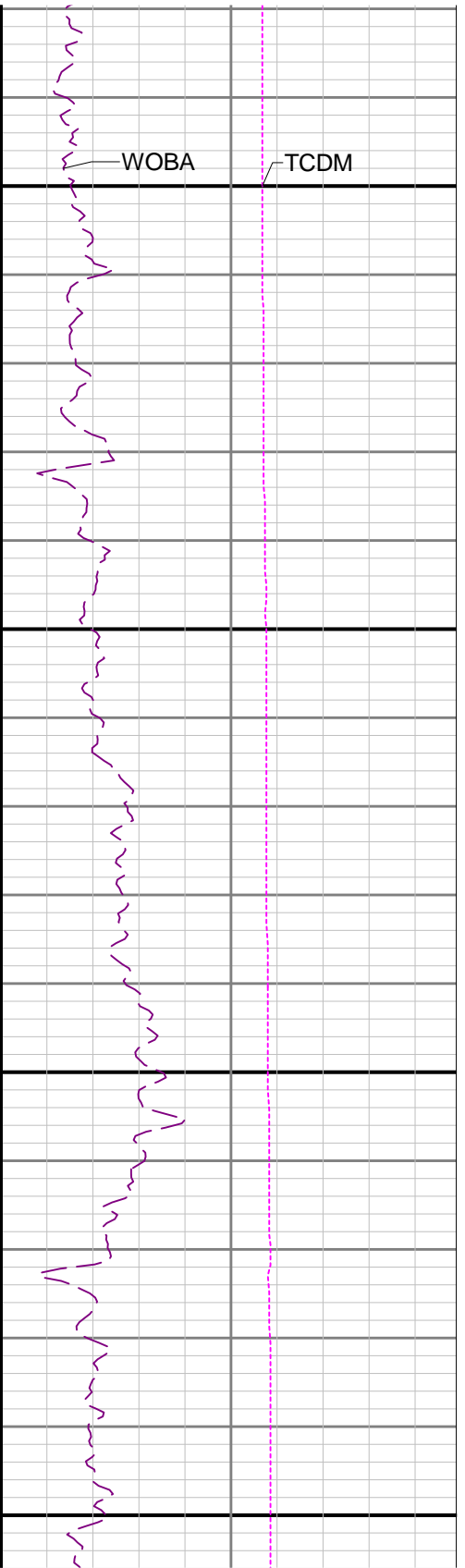
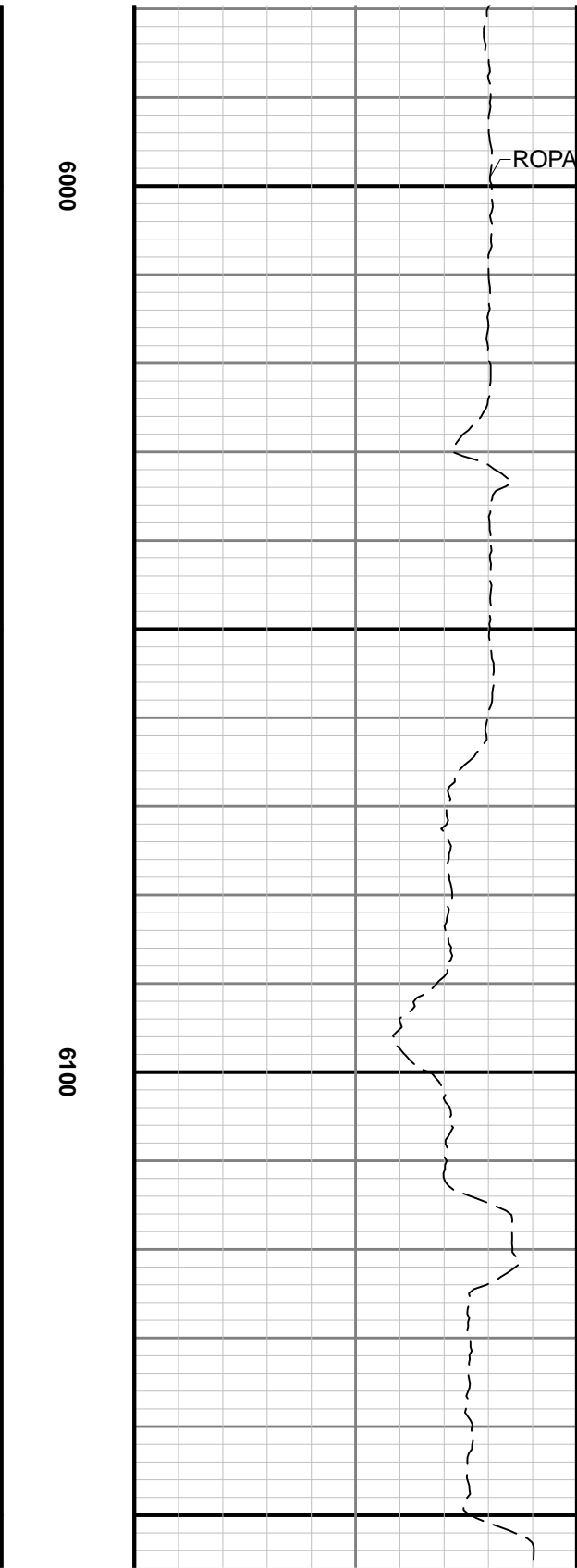
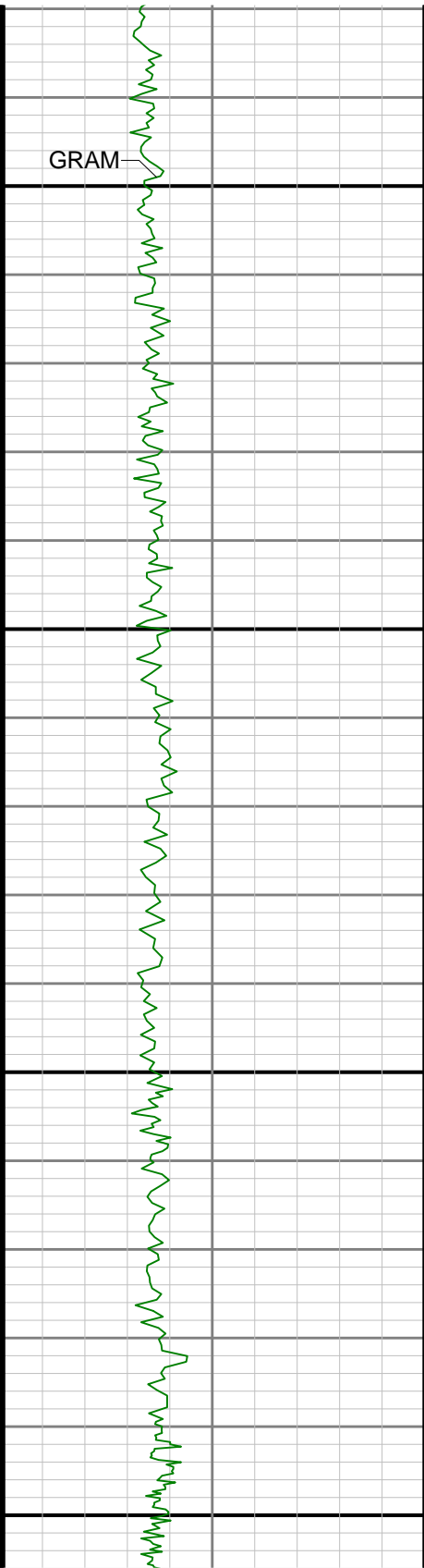
5800

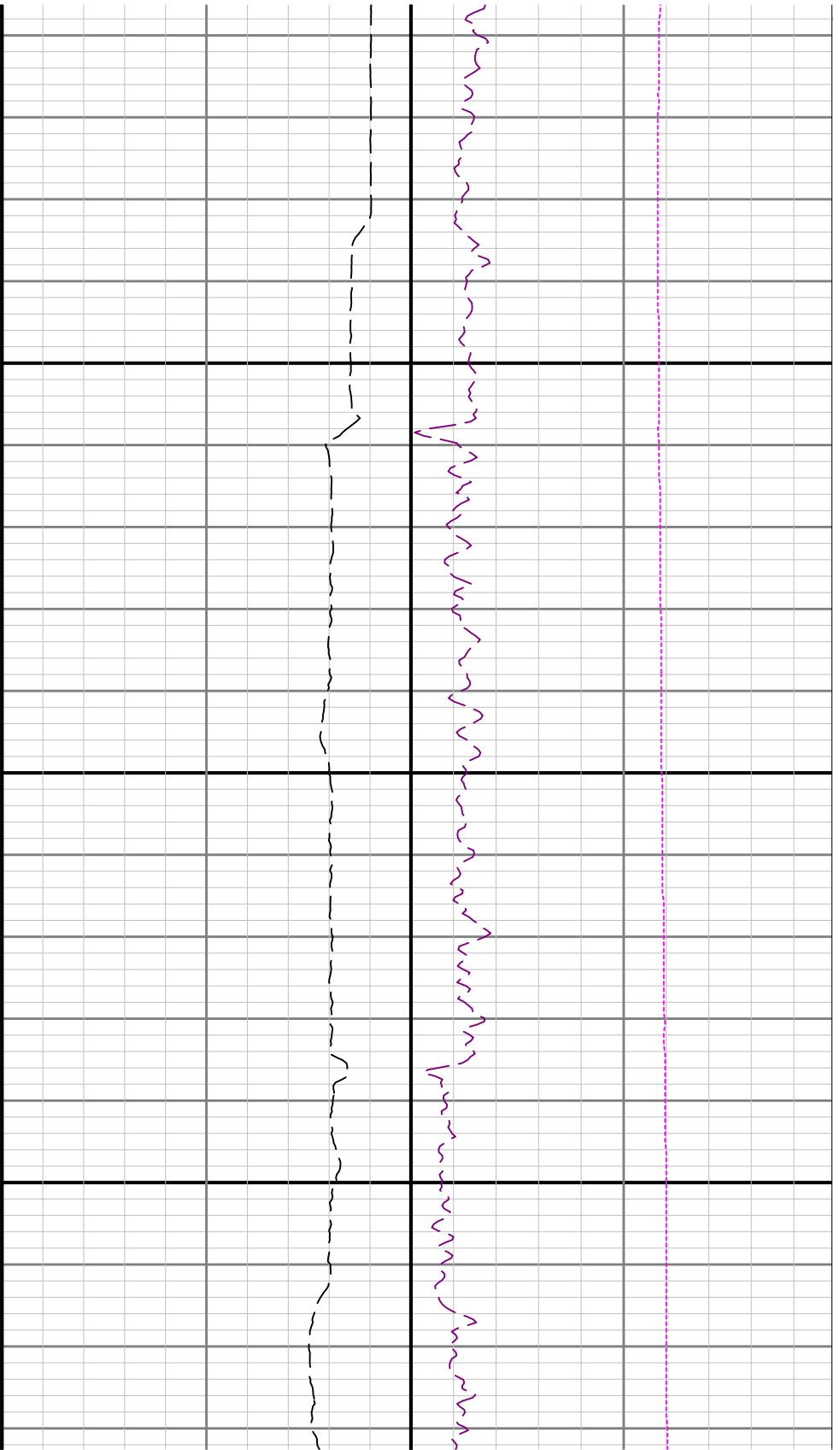




5900

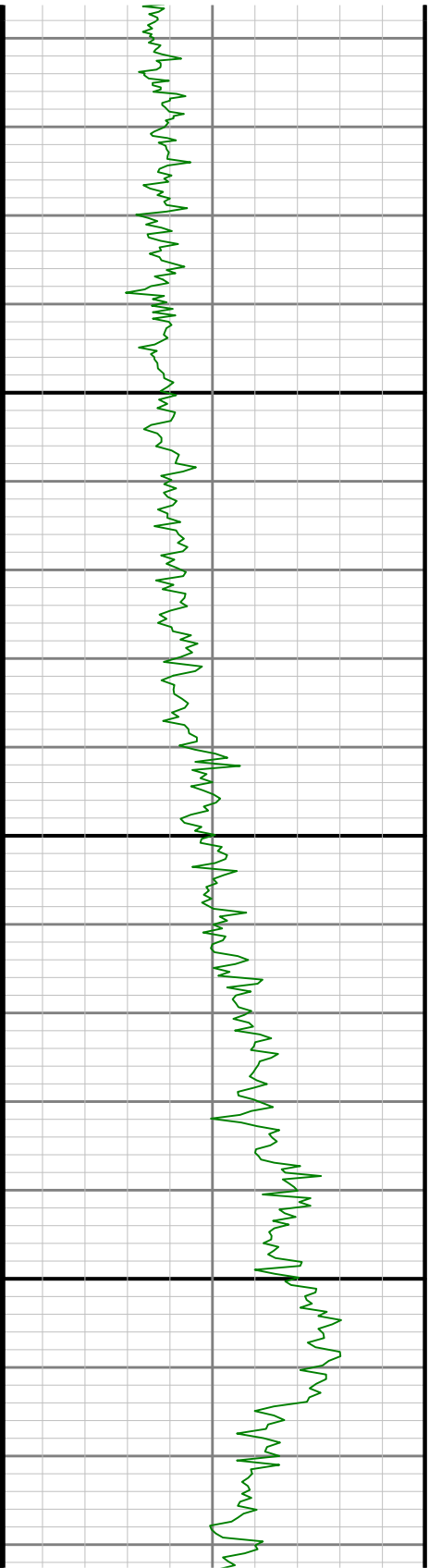


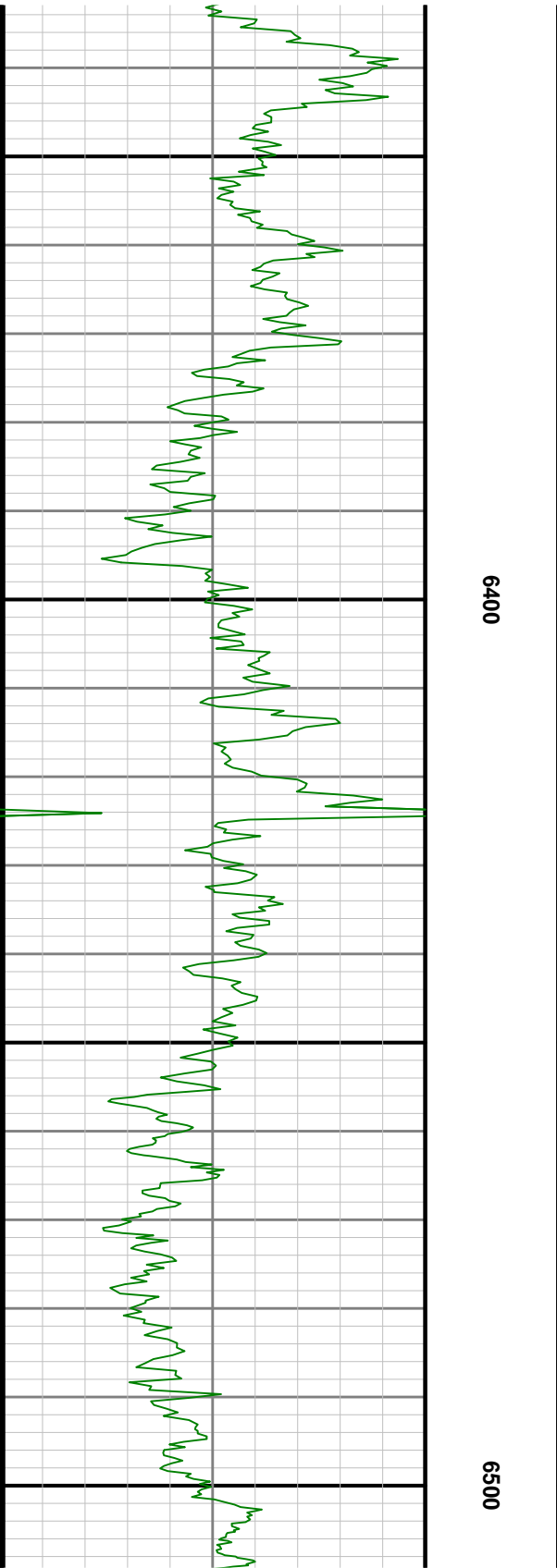
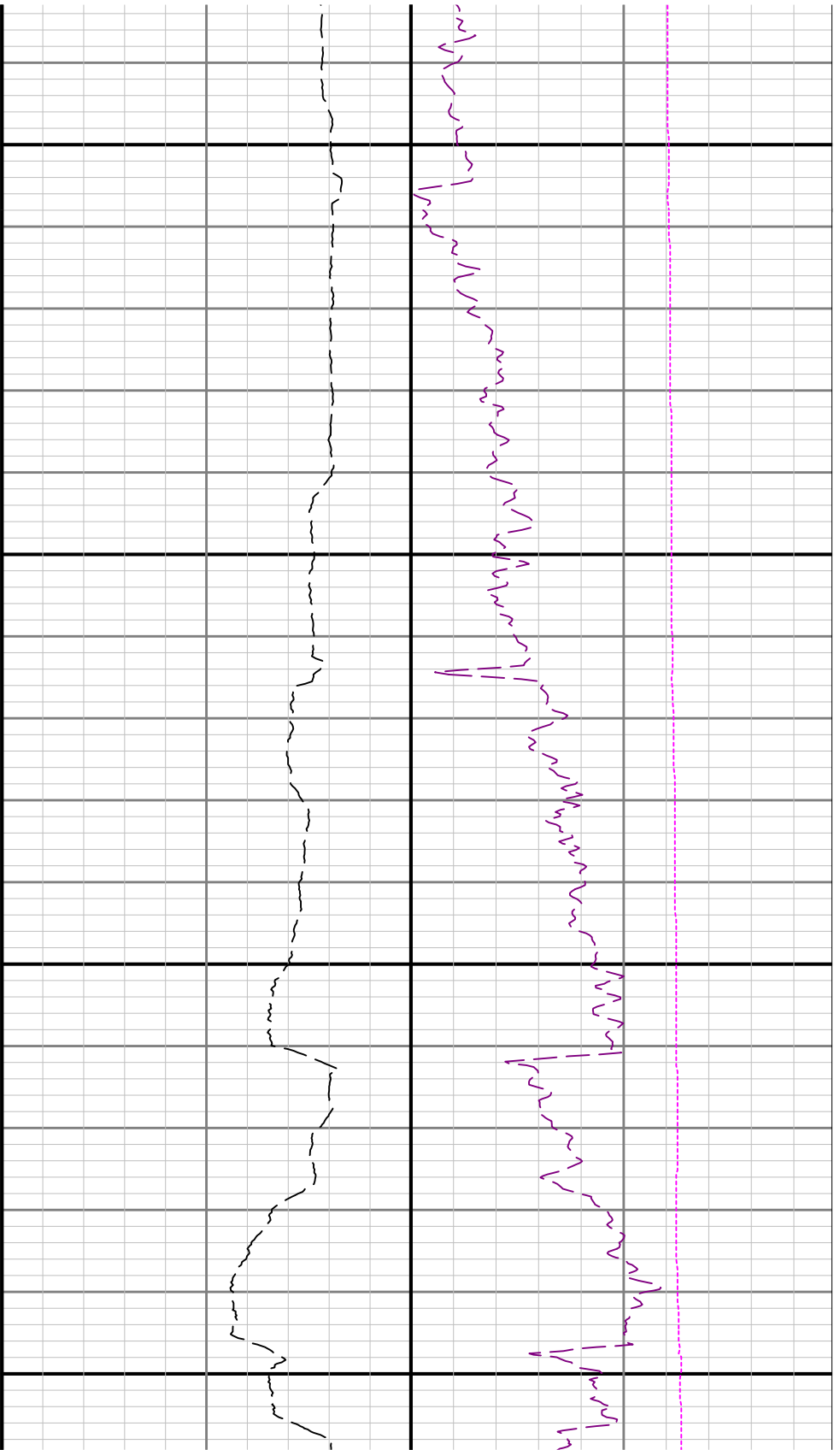


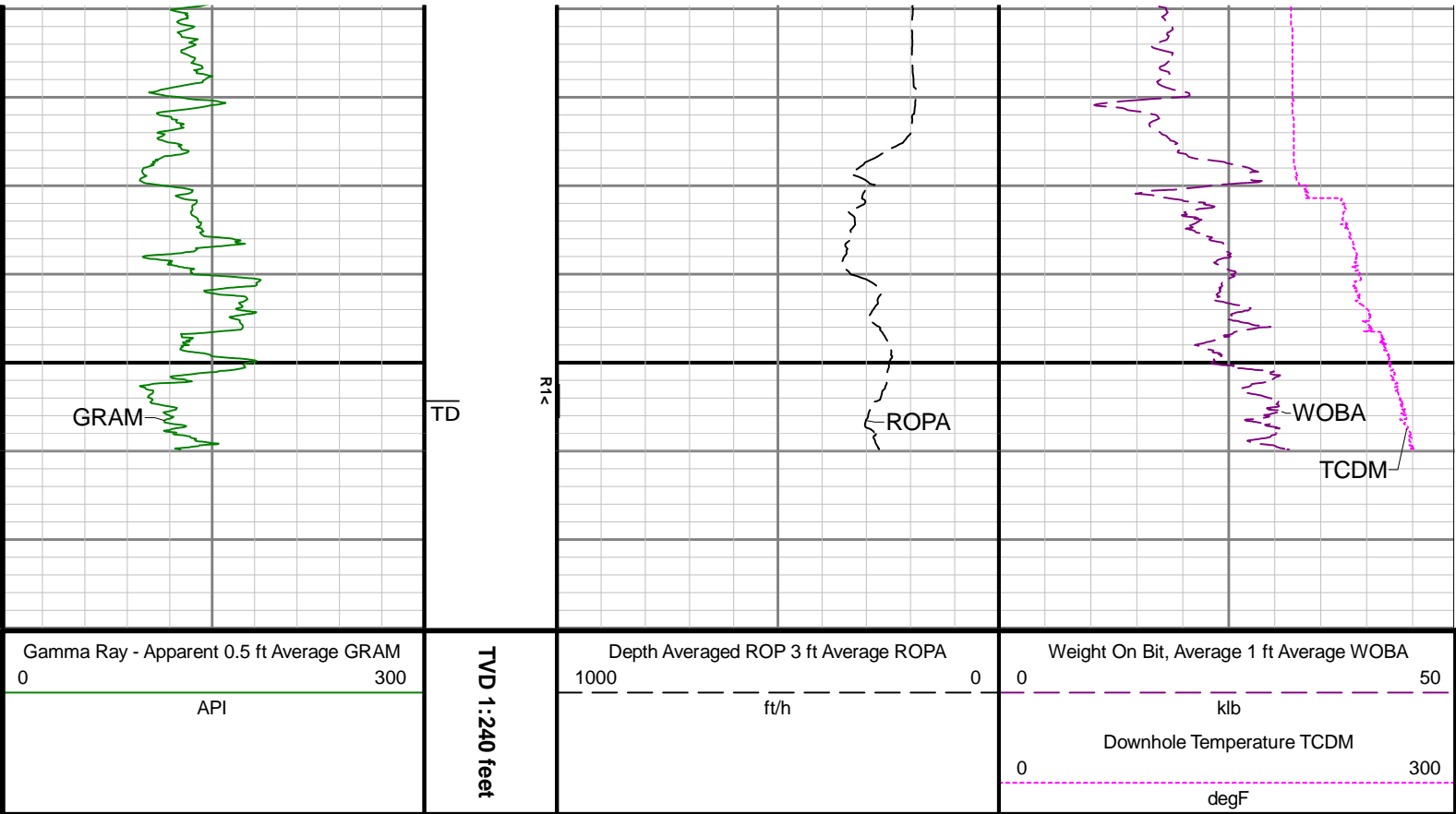


6200

6300







Directional Survey Summary

Latitude:	040° 24' 32.976" N	Longitude:	104° 24' 44.748" W
North Reference:	Grid	Drill Depth Zero:	Rig Floor
Vertical Datum is:	Ground Level	Vertical Datum to DDZ: (ft)	30.00
Vertical Section North: (ft)	0.00	Vertical Section East: (ft)	0.00
Vertical Section Azimuth: (deg)	265.08		
Grid Convergence: (deg)	-0.70	Magnetic Declination: (deg)	7.90
Total Correction: (deg)	7.20	TVD Calculation Method:	Minimum Curvature
Magnetic Correction:	Off	Local Magnetic Field: (nT)	52197
Local Magnetic Dip Angle: (deg)	67.02	Local Gravity Field: (m/s2)	9.801

Tie-In / Projection	Measured Depth (ft)	Inclination (deg)	Azimuth (deg)	Temperature (degF)	North (ft)	East (ft)	True Vertical Depth (ft)	TVD Subsea (ft)	Vertical Section (ft)	Course Length (ft)	Dog Leg Severity (deg/100ft)	Build Rate (deg/100ft)	Turn Rate (deg/100ft)
Tie-In	0.00	0.00	0.00	N/A	0.00	0.00	0.00	-4706.00	0.00	0.00	0.00	0.00	0.00
	84.00	0.50	345.13	N/A	0.35	-0.09	84.00	-4622.00	0.06	84.00	0.60	0.60	-17.70
	179.00	0.62	326.80	N/A	1.18	-0.48	178.99	-4527.01	0.38	95.00	0.23	0.13	-19.29
	271.00	0.45	10.64	N/A	1.96	-0.69	270.99	-4435.01	0.52	92.00	0.47	-0.18	47.65
	366.00	0.36	2.25	N/A	2.62	-0.61	365.99	-4340.01	0.38	95.00	0.11	-0.09	-8.83
	460.00	0.09	38.95	N/A	2.97	-0.55	459.99	-4246.01	0.29	94.00	0.31	-0.29	39.04
	555.00	0.45	52.58	N/A	3.26	-0.21	554.99	-4151.01	-0.07	95.00	0.38	0.38	14.35
	649.00	0.33	25.75	N/A	3.73	0.20	648.98	-4057.02	-0.52	94.00	0.23	-0.13	-28.54
	743.00	0.36	48.05	N/A	4.17	0.54	742.98	-3963.02	-0.90	94.00	0.15	0.03	23.72
	838.00	0.18	16.74	N/A	4.51	0.81	837.98	-3868.02	-1.19	95.00	0.24	-0.19	-32.96
	933.00	0.12	101.02	N/A	4.63	0.95	932.98	-3773.02	-1.34	95.00	0.22	-0.06	88.72
	1026.00	0.08	102.50	N/A	4.60	1.11	1025.98	-3680.02	-1.50	93.00	0.04	-0.04	1.59
	1121.00	0.16	65.42	N/A	4.64	1.29	1120.98	-3585.02	-1.69	95.00	0.11	0.08	-39.03
	1216.00	0.24	28.23	N/A	4.68	1.50	1215.98	-3490.02	-1.85	95.00	0.23	0.16	-19.03

		1216.00	0.34	23.89	N/A	4.96	1.53	1215.98	-3490.02	-1.95	95.00	0.26	0.19	-43.72
		1310.00	0.29	44.38	N/A	5.38	1.81	1309.98	-3396.02	-2.26	94.00	0.13	-0.05	21.80
		1404.00	0.10	6.83	N/A	5.63	1.98	1403.98	-3302.02	-2.46	94.00	0.23	-0.20	-39.95
		1498.00	0.20	342.73	N/A	5.87	1.94	1497.98	-3208.02	-2.44	94.00	0.12	0.11	-25.64
		1593.00	0.31	290.36	N/A	6.12	1.65	1592.98	-3113.02	-2.17	95.00	0.26	0.12	-55.13
		1687.00	0.65	286.47	N/A	6.36	0.90	1686.97	-3019.03	-1.45	94.00	0.36	0.36	-4.14
		1782.00	0.34	297.94	N/A	6.64	0.14	1781.97	-2924.03	-0.71	95.00	0.34	-0.33	12.07
		1877.00	0.20	18.87	N/A	6.93	-0.06	1876.97	-2829.03	-0.54	95.00	0.39	-0.15	85.19
		1944.00	0.42	86.49	N/A	7.06	0.23	1943.97	-2762.03	-0.83	67.00	0.58	0.33	100.93
		1980.00	0.60	140.02	123.0	6.92	0.48	1979.97	-2726.03	-1.07	36.00	1.35	0.50	148.69
		2075.00	2.19	147.65	98.7	5.01	1.77	2074.94	-2631.06	-2.19	95.00	1.68	1.67	8.03
		2169.00	4.27	147.64	104.1	0.53	4.60	2168.78	-2537.22	-4.63	94.00	2.21	2.21	-0.01
		2264.00	6.36	147.68	106.8	-6.90	9.31	2263.37	-2442.63	-8.68	95.00	2.20	2.20	0.04
		2358.00	6.84	146.86	109.5	-15.99	15.15	2356.74	-2349.26	-13.73	94.00	0.52	0.51	-0.87
		2453.00	9.10	161.60	112.2	-27.86	20.62	2450.83	-2255.17	-18.15	95.00	3.19	2.38	15.52
		2548.00	9.10	157.43	114.9	-41.92	25.87	2544.64	-2161.36	-22.18	95.00	0.69	0.00	-4.39
		2642.00	8.96	146.91	117.6	-54.92	32.72	2637.48	-2068.52	-27.89	94.00	1.76	-0.15	-11.19
		2737.00	9.03	132.19	120.3	-66.13	42.29	2731.32	-1974.68	-36.46	95.00	2.42	0.07	-15.49
		2831.00	8.85	114.24	120.3	-74.05	54.35	2824.20	-1881.80	-47.80	94.00	2.96	-0.19	-19.10
		2926.00	8.33	90.41	114.9	-77.10	67.90	2918.16	-1787.84	-61.04	95.00	3.76	-0.55	-25.08
		3020.00	8.23	103.15	120.3	-78.68	81.26	3011.19	-1694.81	-74.21	94.00	1.95	-0.11	13.55
		3115.00	7.79	104.48	123.0	-81.84	94.11	3105.26	-1600.74	-86.75	95.00	0.50	-0.46	1.40
		3209.00	7.83	103.32	123.0	-84.91	106.51	3198.39	-1507.61	-98.84	94.00	0.17	0.04	-1.23
		3304.00	7.54	106.86	125.7	-88.21	118.78	3292.54	-1413.46	-110.77	95.00	0.58	-0.31	3.73
		3398.00	7.60	109.70	128.4	-92.09	130.53	3385.72	-1320.28	-122.15	94.00	0.40	0.06	3.02
		3493.00	7.61	114.28	128.4	-96.79	142.18	3479.88	-1226.12	-133.35	95.00	0.64	0.01	4.82
		3587.00	7.91	115.60	131.1	-102.15	153.69	3573.02	-1132.98	-144.36	94.00	0.37	0.32	1.40
		3682.00	7.85	111.28	133.8	-107.33	165.63	3667.13	-1038.87	-155.81	95.00	0.63	-0.06	-4.55
		3776.00	7.80	105.64	133.8	-111.38	177.75	3760.25	-945.75	-167.54	94.00	0.82	-0.05	-6.00
		3870.00	8.01	118.21	136.5	-116.19	189.66	3853.37	-852.63	-179.00	94.00	1.85	0.22	13.37
		3965.00	8.02	128.75	139.2	-123.47	200.67	3947.44	-758.56	-189.34	95.00	1.54	0.01	11.09
		4060.00	8.33	134.73	139.2	-132.46	210.72	4041.48	-664.52	-198.59	95.00	0.95	0.33	6.29
		4154.00	8.36	140.23	141.9	-142.51	219.93	4134.49	-571.51	-206.90	94.00	0.85	0.03	5.85
		4249.00	8.20	143.76	144.6	-153.28	228.36	4228.50	-477.50	-214.37	95.00	0.56	-0.17	3.72
		4343.00	8.51	142.22	144.6	-164.18	236.58	4321.50	-384.50	-221.63	94.00	0.41	0.33	-1.64
		4438.00	8.31	141.72	144.6	-175.13	245.14	4415.48	-290.52	-229.22	95.00	0.22	-0.21	-0.53
		4532.00	8.27	146.95	147.3	-186.13	253.03	4508.50	-197.50	-236.14	94.00	0.80	-0.04	5.56
		4627.00	8.04	145.10	150.0	-197.30	260.56	4602.54	-103.46	-242.68	95.00	0.37	-0.24	-1.95
		4722.00	8.06	143.90	147.3	-208.13	268.29	4696.60	-9.40	-249.45	95.00	0.18	0.02	-1.26
		4816.00	8.34	134.53	150.0	-218.24	277.03	4789.64	83.64	-257.29	94.00	1.45	0.30	-9.97
		4911.00	7.98	126.28	150.0	-226.97	287.26	4883.68	177.68	-266.73	95.00	1.29	-0.38	-8.68
		5006.00	7.79	126.70	150.0	-234.72	297.74	4977.79	271.79	-276.51	95.00	0.21	-0.20	0.44
		5100.00	7.46	139.56	152.7	-243.17	306.80	5070.96	364.96	-284.82	94.00	1.84	-0.35	13.68
		5195.00	7.39	146.59	155.4	-252.97	314.17	5165.17	459.17	-291.31	95.00	0.96	-0.07	7.40
		5289.00	7.49	156.99	158.1	-263.65	319.89	5258.38	552.38	-296.10	94.00	1.43	0.11	11.06
		5384.00	7.48	154.75	158.1	-274.94	324.95	5352.57	646.57	-300.17	95.00	0.31	-0.01	-2.36
		5478.00	7.50	145.46	160.8	-285.53	331.04	5445.77	739.77	-305.33	94.00	1.29	0.02	-9.88
		5573.00	7.42	136.96	163.5	-295.12	338.74	5539.97	833.97	-312.18	95.00	1.16	-0.08	-8.95
		5667.00	6.64	136.25	160.8	-303.49	346.64	5633.26	927.26	-319.33	94.00	0.83	-0.83	-0.76
		5762.00	5.98	138.08	166.2	-311.14	353.74	5727.69	1021.69	-325.76	95.00	0.73	-0.69	1.93
		5856.00	8.03	147.78	168.9	-320.33	360.52	5820.98	1114.98	-331.72	94.00	2.51	2.18	10.32
		5951.00	6.35	204.23	168.9	-330.75	361.90	5915.34	1209.34	-332.20	95.00	7.31	-1.77	59.42
		6046.00	10.82	266.26	171.6	-336.14	350.82	6009.43	1303.43	-320.70	95.00	10.13	4.71	65.29
		6141.00	19.35	265.62	174.3	-337.92	326.18	6101.07	1395.07	-296.00	95.00	8.98	8.98	-0.67
		6235.00	27.24	262.17	174.3	-342.05	289.29	6187.34	1481.34	-258.88	94.00	8.51	8.39	-3.67
		6330.00	36.41	261.14	177.0	-349.37	239.78	6267.98	1561.98	-208.94	95.00	9.67	9.65	-1.08
		6424.00	45.01	263.54	179.7	-357.42	179.07	6339.17	1633.17	-147.76	94.00	9.30	9.15	2.55
		6519.00	53.88	262.58	182.5	-366.17	107.50	6400.87	1694.87	-75.70	95.00	9.37	9.34	-1.01
		6613.00	61.94	263.87	185.2	-375.52	28.48	6450.77	1744.77	3.83	94.00	8.65	8.57	1.37

	6708.00	69.90	264.97	187.9	-383.92	-57.77	6489.50	1783.50	90.49	95.00	8.45	8.38	1.16
	6802.00	77.50	265.78	190.6	-391.18	-147.64	6515.87	1809.87	180.64	94.00	8.13	8.09	0.86
	6897.00	87.69	264.53	193.3	-399.14	-241.38	6528.09	1822.09	274.72	95.00	10.81	10.73	-1.32
	6991.00	90.03	264.78	196.0	-407.89	-334.95	6529.96	1823.96	368.69	94.00	2.50	2.49	0.27
	7086.00	90.06	263.45	198.7	-417.63	-429.44	6529.89	1823.89	463.68	95.00	1.40	0.03	-1.40
	7180.00	89.78	263.13	201.4	-428.62	-522.80	6530.02	1824.02	557.63	94.00	0.45	-0.30	-0.34
	7275.00	89.63	264.02	198.7	-439.25	-617.20	6530.51	1824.51	652.60	95.00	0.95	-0.16	0.94
	7369.00	89.60	265.62	201.4	-447.73	-710.81	6531.14	1825.14	746.59	94.00	1.70	-0.03	1.70
	7463.00	90.12	269.00	201.4	-452.14	-804.69	6531.37	1825.37	840.51	94.00	3.64	0.55	3.60
	7558.00	90.15	269.87	204.1	-453.08	-899.69	6531.15	1825.15	935.23	95.00	0.92	0.03	0.92
	7652.00	90.25	271.95	206.8	-451.59	-993.67	6530.82	1824.82	1028.74	94.00	2.22	0.11	2.21
	7747.00	90.28	271.31	206.8	-448.89	-1088.63	6530.38	1824.38	1123.12	95.00	0.67	0.03	-0.67
	7841.00	89.97	270.49	209.5	-447.41	-1182.62	6530.17	1824.17	1216.63	94.00	0.93	-0.33	-0.87
	7935.00	89.91	268.33	212.2	-448.38	-1276.61	6530.27	1824.27	1310.36	94.00	2.30	-0.06	-2.30
	8030.00	89.94	267.51	214.9	-451.82	-1371.54	6530.40	1824.40	1405.24	95.00	0.86	0.03	-0.86
	8124.00	89.97	268.07	214.9	-455.45	-1465.47	6530.47	1824.47	1499.13	94.00	0.60	0.03	0.60
	8219.00	89.85	268.51	217.6	-458.28	-1560.43	6530.62	1824.62	1593.99	95.00	0.48	-0.13	0.46
	8313.00	90.00	268.40	217.6	-460.82	-1654.40	6530.74	1824.74	1687.82	94.00	0.20	0.16	-0.12
	8408.00	89.72	269.42	220.3	-462.63	-1749.38	6530.98	1824.98	1782.61	95.00	1.11	-0.29	1.07
	8502.00	89.91	268.49	220.3	-464.34	-1843.36	6531.28	1825.28	1876.39	94.00	1.01	0.20	-0.99
	8597.00	89.78	267.15	223.0	-467.95	-1938.29	6531.54	1825.54	1971.28	95.00	1.42	-0.14	-1.41
	8692.00	89.66	266.53	223.0	-473.19	-2033.14	6532.00	1826.00	2066.23	95.00	0.66	-0.13	-0.65
	8786.00	89.42	269.50	225.7	-476.45	-2127.07	6532.75	1826.75	2160.10	94.00	3.17	-0.26	3.16
	8881.00	89.54	271.34	225.7	-475.75	-2222.06	6533.62	1827.62	2254.68	95.00	1.94	0.13	1.94
	8975.00	89.88	267.38	225.7	-476.80	-2316.04	6534.09	1828.09	2348.39	94.00	4.23	0.36	-4.21
	9070.00	89.85	264.13	225.7	-483.83	-2410.76	6534.32	1828.32	2443.38	95.00	3.42	-0.03	-3.42
	9164.00	90.06	263.26	225.7	-494.15	-2504.19	6534.39	1828.39	2537.35	94.00	0.95	0.22	-0.93
	9259.00	89.66	262.37	225.7	-506.04	-2598.45	6534.62	1828.62	2632.27	95.00	1.03	-0.42	-0.94
	9354.00	89.75	263.08	228.4	-518.07	-2692.68	6535.11	1829.11	2727.19	95.00	0.75	0.09	0.75
	9448.00	89.63	265.73	228.4	-527.23	-2786.22	6535.62	1829.62	2821.17	94.00	2.82	-0.13	2.82
	9543.00	89.63	266.72	228.4	-533.48	-2881.01	6536.23	1830.23	2916.15	95.00	1.04	0.00	1.04
	9637.00	89.66	267.12	231.1	-538.53	-2974.87	6536.82	1830.82	3010.10	94.00	0.43	0.03	0.43
	9732.00	89.78	267.25	231.1	-543.20	-3069.76	6537.28	1831.28	3105.03	95.00	0.19	0.13	0.14
	9826.00	89.57	268.28	233.8	-546.87	-3163.68	6537.81	1831.81	3198.93	94.00	1.12	-0.22	1.10
	9921.00	89.60	268.83	233.8	-549.26	-3258.65	6538.50	1832.50	3293.75	95.00	0.58	0.03	0.58
	10016.00	89.75	267.42	233.8	-552.37	-3353.60	6539.04	1833.04	3388.61	95.00	1.49	0.16	-1.48
	10110.00	89.72	267.36	231.1	-556.65	-3447.50	6539.48	1833.48	3482.54	94.00	0.07	-0.03	-0.06
	10205.00	89.60	266.49	233.8	-561.75	-3542.36	6540.04	1834.04	3577.48	95.00	0.92	-0.13	-0.92
	10300.00	89.66	266.48	236.5	-567.57	-3637.18	6540.65	1834.65	3672.45	95.00	0.06	0.06	-0.01
	10394.00	89.66	265.99	233.8	-573.74	-3730.97	6541.21	1835.21	3766.43	94.00	0.52	0.00	-0.52
	10489.00	89.94	266.24	233.8	-580.18	-3825.75	6541.54	1835.54	3861.42	95.00	0.40	0.29	0.26
	10583.00	89.91	265.92	233.8	-586.60	-3919.53	6541.67	1835.67	3955.40	94.00	0.34	-0.03	-0.34
	10678.00	89.91	268.43	233.8	-591.29	-4014.41	6541.81	1835.81	4050.33	95.00	2.64	0.00	2.64
	10772.00	89.88	270.46	233.8	-592.20	-4108.40	6541.99	1835.99	4144.05	94.00	2.16	-0.03	2.16
	10867.00	89.97	269.14	233.8	-592.53	-4203.40	6542.11	1836.11	4238.73	95.00	1.39	0.09	-1.39
	11056.00	89.60	265.99	236.5	-600.56	-4392.20	6542.82	1836.82	4427.53	189.00	1.68	-0.20	-1.67
	11150.00	89.88	266.41	233.8	-606.79	-4485.99	6543.25	1837.25	4521.51	94.00	0.54	0.30	0.45
	11245.00	89.75	266.21	239.2	-612.90	-4580.80	6543.55	1837.55	4616.48	95.00	0.25	-0.14	-0.21
	11339.00	89.78	266.02	239.2	-619.27	-4674.58	6543.94	1837.94	4710.47	94.00	0.20	0.03	-0.20
	11434.00	89.78	265.54	241.9	-626.26	-4769.32	6544.30	1838.30	4805.46	95.00	0.51	0.00	-0.51
	11528.00	89.88	264.94	241.9	-634.06	-4863.00	6544.58	1838.58	4899.46	94.00	0.65	0.11	-0.64
	11717.00	89.75	267.11	239.2	-647.16	-5051.53	6545.19	1839.19	5088.42	189.00	1.15	-0.07	1.15
	11812.00	89.78	267.27	239.2	-651.82	-5146.41	6545.58	1839.58	5183.35	95.00	0.17	0.03	0.17
	11907.00	89.75	268.50	241.9	-655.32	-5241.35	6545.97	1839.97	5278.24	95.00	1.30	-0.03	1.29
	12001.00	89.75	270.67	241.9	-656.01	-5335.34	6546.38	1840.38	5371.94	94.00	2.31	0.00	2.31
	12096.00	90.15	269.68	241.9	-655.72	-5430.34	6546.47	1840.47	5466.56	95.00	1.12	0.42	-1.04
	12191.00	90.65	267.29	244.6	-658.23	-5525.29	6545.80	1839.80	5561.39	95.00	2.57	0.53	-2.52
	12285.00	89.94	263.23	244.6	-665.99	-5618.95	6545.32	1839.32	5655.37	94.00	4.38	-0.76	-4.32
	12380.00	89.78	264.31	247.3	-676.30	-5713.39	6545.55	1839.55	5750.34	95.00	1.15	-0.17	1.14

	12474.00	89.78	267.58	250.0	-682.95	-5807.14	6545.91	1839.91	5844.31	94.00	3.48	0.00	3.48
	12569.00	89.75	268.40	250.0	-686.28	-5902.08	6546.30	1840.30	5939.19	95.00	0.86	-0.03	0.86
	12664.00	89.69	265.65	250.0	-691.21	-5996.94	6546.77	1840.77	6034.13	95.00	2.90	-0.06	-2.89
	12758.00	89.88	268.06	250.0	-696.37	-6090.79	6547.12	1841.12	6128.07	94.00	2.57	0.20	2.56
	12852.00	89.88	269.83	250.0	-698.10	-6184.77	6547.32	1841.32	6221.86	94.00	1.88	0.00	1.88
	12947.00	90.06	270.43	250.0	-697.88	-6279.77	6547.37	1841.37	6316.49	95.00	0.66	0.19	0.63
	13042.00	89.82	271.06	250.0	-696.65	-6374.76	6547.46	1841.46	6411.02	95.00	0.71	-0.25	0.66
	13137.00	89.91	270.14	250.0	-695.65	-6469.76	6547.69	1841.69	6505.58	95.00	0.97	0.09	-0.97
	13231.00	90.00	266.74	250.0	-698.21	-6563.71	6547.76	1841.76	6599.40	94.00	3.62	0.10	-3.62
	13325.00	89.88	264.08	252.7	-705.73	-6657.40	6547.86	1841.86	6693.39	94.00	2.83	-0.13	-2.83
	13420.00	89.85	262.78	252.7	-716.60	-6751.77	6548.08	1842.08	6788.35	95.00	1.37	-0.03	-1.37
	13514.00	89.69	262.33	252.7	-728.78	-6844.98	6548.46	1842.46	6882.26	94.00	0.51	-0.17	-0.48
	13609.00	89.63	262.57	252.7	-741.26	-6939.15	6549.03	1843.03	6977.16	95.00	0.26	-0.06	0.25
	13703.00	89.72	263.58	255.4	-752.60	-7032.46	6549.56	1843.56	7071.10	94.00	1.08	0.10	1.07
	13798.00	89.78	263.31	252.7	-763.44	-7126.84	6549.97	1843.97	7166.06	95.00	0.29	0.06	-0.28
	13892.00	89.57	264.24	255.4	-773.63	-7220.28	6550.51	1844.51	7260.03	94.00	1.01	-0.22	0.99
	13987.00	89.60	268.37	258.1	-779.75	-7315.06	6551.20	1845.20	7354.99	95.00	4.35	0.03	4.35
	14081.00	89.66	269.67	258.1	-781.36	-7409.05	6551.80	1845.80	7448.76	94.00	1.38	0.06	1.38
	14176.00	89.72	269.49	258.1	-782.06	-7504.04	6552.32	1846.32	7543.47	95.00	0.20	0.06	-0.19
	14271.00	89.82	269.95	258.1	-782.52	-7599.04	6552.70	1846.70	7638.15	95.00	0.50	0.11	0.48
	14365.00	89.66	269.27	260.8	-783.16	-7693.04	6553.12	1847.12	7731.86	94.00	0.74	-0.17	-0.72
	14460.00	89.72	269.49	260.8	-784.19	-7788.03	6553.64	1847.64	7826.59	95.00	0.24	0.06	0.23
	14555.00	89.69	269.27	263.5	-785.22	-7883.02	6554.13	1848.13	7921.32	95.00	0.23	-0.03	-0.23
	14649.00	89.75	267.30	263.5	-788.03	-7976.97	6554.59	1848.59	8015.17	94.00	2.10	0.06	-2.10
	14744.00	89.60	267.60	263.5	-792.26	-8071.88	6555.13	1849.13	8110.09	95.00	0.35	-0.16	0.32
	14838.00	89.75	268.93	263.5	-795.10	-8165.83	6555.66	1849.66	8203.94	94.00	1.42	0.16	1.41
	14933.00	89.97	267.99	263.5	-797.66	-8260.80	6555.89	1849.89	8298.77	95.00	1.02	0.23	-0.99
	15028.00	89.60	265.33	263.5	-803.19	-8355.63	6556.25	1850.25	8393.72	95.00	2.83	-0.39	-2.80
	15122.00	89.75	265.51	266.2	-810.70	-8449.32	6556.78	1850.78	8487.72	94.00	0.25	0.16	0.19
	15216.00	89.60	267.20	266.2	-816.67	-8543.13	6557.31	1851.31	8581.69	94.00	1.80	-0.16	1.80
	15311.00	89.54	268.49	266.2	-820.25	-8638.06	6558.03	1852.03	8676.58	95.00	1.36	-0.06	1.36
	15405.00	89.82	269.79	269.0	-821.66	-8732.04	6558.55	1852.55	8770.34	94.00	1.41	0.30	1.38
	15500.00	89.63	270.96	269.0	-821.03	-8827.04	6559.01	1853.01	8864.93	95.00	1.25	-0.20	1.23
	15595.00	89.91	271.14	269.0	-819.29	-8922.02	6559.39	1853.39	8959.41	95.00	0.35	0.29	0.19
	15689.00	89.94	270.49	271.7	-817.96	-9016.01	6559.51	1853.51	9052.94	94.00	0.69	0.03	-0.69
	15784.00	89.88	270.27	269.0	-817.33	-9111.01	6559.66	1853.66	9147.54	95.00	0.24	-0.06	-0.23
	15878.00	89.91	269.13	269.0	-817.82	-9205.01	6559.83	1853.83	9241.23	94.00	1.21	0.03	-1.21
	15973.00	90.18	268.17	252.7	-820.06	-9299.98	6559.76	1853.76	9336.04	95.00	1.05	0.28	-1.01
	16068.00	90.18	266.95	258.1	-824.10	-9394.89	6559.46	1853.46	9430.95	95.00	1.28	0.00	-1.28
	16162.00	89.97	266.45	269.0	-829.51	-9488.73	6559.34	1853.34	9524.91	94.00	0.58	-0.22	-0.53
	16257.00	90.18	266.97	271.7	-834.96	-9583.58	6559.21	1853.21	9619.88	95.00	0.59	0.22	0.55
	16351.00	90.15	265.27	271.7	-841.32	-9677.36	6558.94	1852.94	9713.86	94.00	1.81	-0.03	-1.81
	16446.00	90.18	262.62	271.7	-851.34	-9771.82	6558.67	1852.67	9808.83	95.00	2.79	0.03	-2.79
	16541.00	90.09	264.07	271.7	-862.35	-9866.18	6558.45	1852.45	9903.78	95.00	1.53	-0.09	1.53
	16635.00	90.25	266.48	269.0	-870.10	-9959.85	6558.17	1852.17	9997.77	94.00	2.57	0.17	2.56
	16730.00	89.94	268.10	269.0	-874.59	-10054.74	6558.01	1852.01	10092.70	95.00	1.74	-0.33	1.71
	16825.00	90.12	270.07	271.7	-876.10	-10149.72	6557.96	1851.96	10187.46	95.00	2.08	0.19	2.07
	16919.00	90.89	271.40	271.7	-874.90	-10243.71	6557.13	1851.13	10281.00	94.00	1.63	0.82	1.41
	16975.00	92.15	272.05	269.0	-873.21	-10299.66	6555.64	1849.64	10336.60	56.00	2.53	2.25	1.16
Projection	17000.00	92.15	272.05	N/A	-872.32	-10324.63	6554.71	1848.71	10361.40	25.00	0.00	0.00	0.00