

Name	Arrive Wellsite	Depart Wellsite	Name	Arrive Wellsite	Depart Wellsite	Name	Arrive Wellsite	Depart Wellsite
Tien Bui	2018-10-01	2018-10-06						

Mud Properties Record

Date / Time	Run No.	Measured Depth (ft)	Mud Type	Density (ppg)	Viscosity (cP)	pH	Fluid Loss (cm3)	Oil / Water	Source	Total Chlorides (ppm)	K+ (%)
2018-10-02 08:45	1	1945.00	Oil Based Mud	9.3	11	N/A	10.0	81/19	Active Pit	25000	0.00
2018-10-03 05:12	1	4350.00	Oil Based Mud	9.5	14	N/A	21.8	79.8/20.2	Active Pit	23000	0.00
2018-10-03 09:04	1	5352.00	Oil Based Mud	9.3	11	N/A	18.2	81.2/18.8	Active Pit	26000	0.00
2018-10-04 08:55	1	11217.00	Oil Based Mud	9.5	11	N/A	20.1	84.1/15.9	Active Pit	25500	0.00

Equipment and Service Data

Run No.	Tool	Serial Number	Measurement	Sensor Offset (ft)	Bit Offset (ft)	Max O.D. (in)	Min I.D. (in)
1	ATC_SU	12296375	Near Bit VSS	5.93	6.73	7.000	4.330
1	ATC_SU	12296375	Near Bit Inclination	5.93	6.73	7.000	4.330
1	ATC_MWD	14278074	Gamma (single)	2.76	12.91	7.000	3.250
1	ATC_MWD	14278074	Directional (mag)	12.27	22.42	7.000	3.250

Service and Tool Mnemonics

Mnemonic	Name	Description
ATC_SU	ATC_SU	Auto Trak Curve Steering Unit
ATC_MWD	ATC_MWD	Auto Trak Curve MWD
ATC_LCPM	ATC_LCPM	Auto Trak Curve LCPM

Comments

1	Depth measurements were obtained from a depth control system not supplied or operated by Baker Hughes. Due to lack of control by Baker Hughes logging engineers, depth calibrations and measurements could not be independently verified.
2	Baker Hughes LWD Run 1 utilized 6 ¾ inch NaviGamma service (Gamma Ray and Directional) behind an 8 1/2 inch bit and rotary steerable assembly from 1945 to 16983 feet MD (1945 to 6605 feet TVD).
3	The Gamma Ray Apparent (GRAM) data is presented 0 to 300 API, per the customer's request.

Remarks

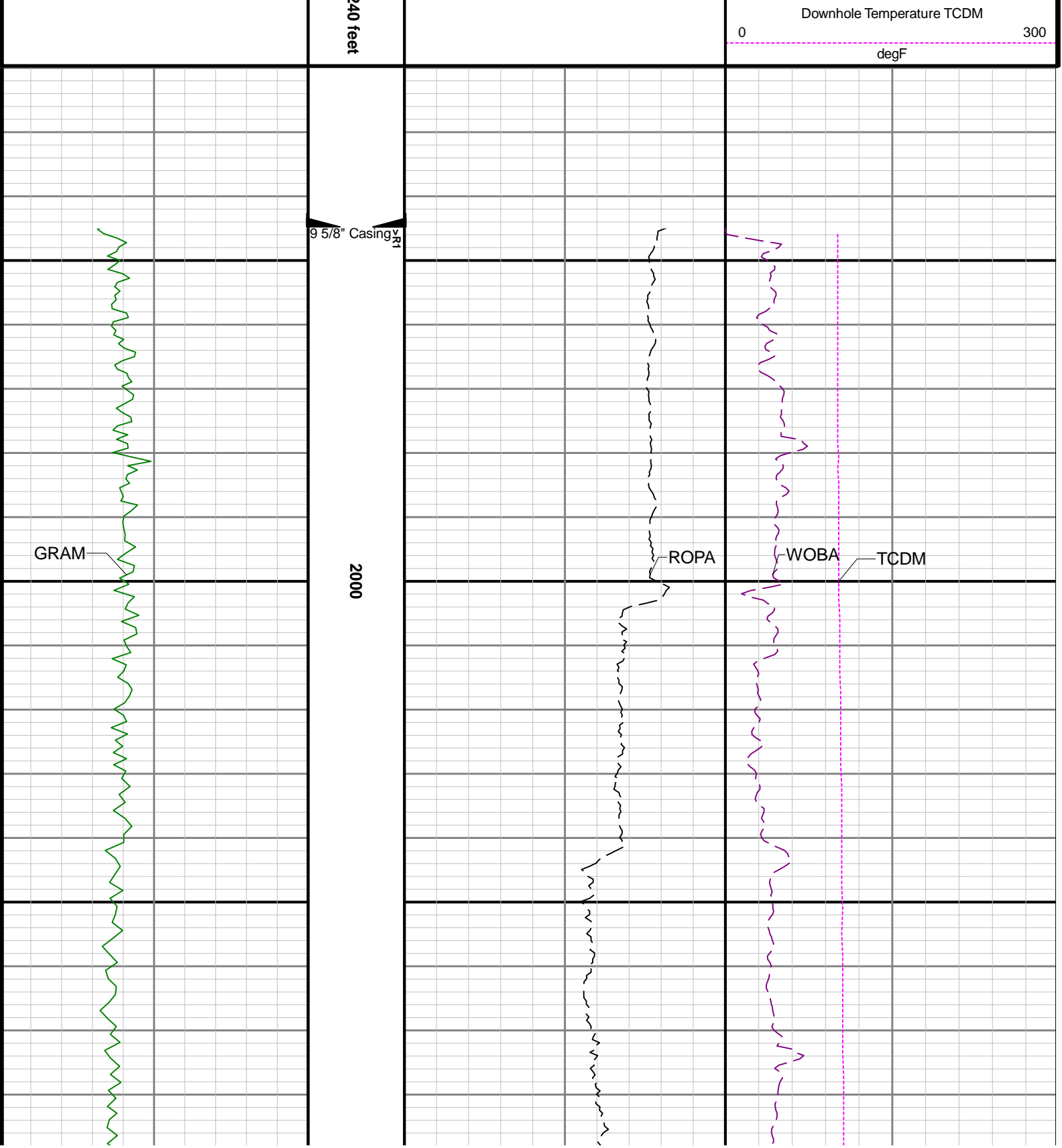
Number	Measured Depth (ft)	Hole Section (in)	Run No.	Remark
--------	---------------------	-------------------	---------	--------

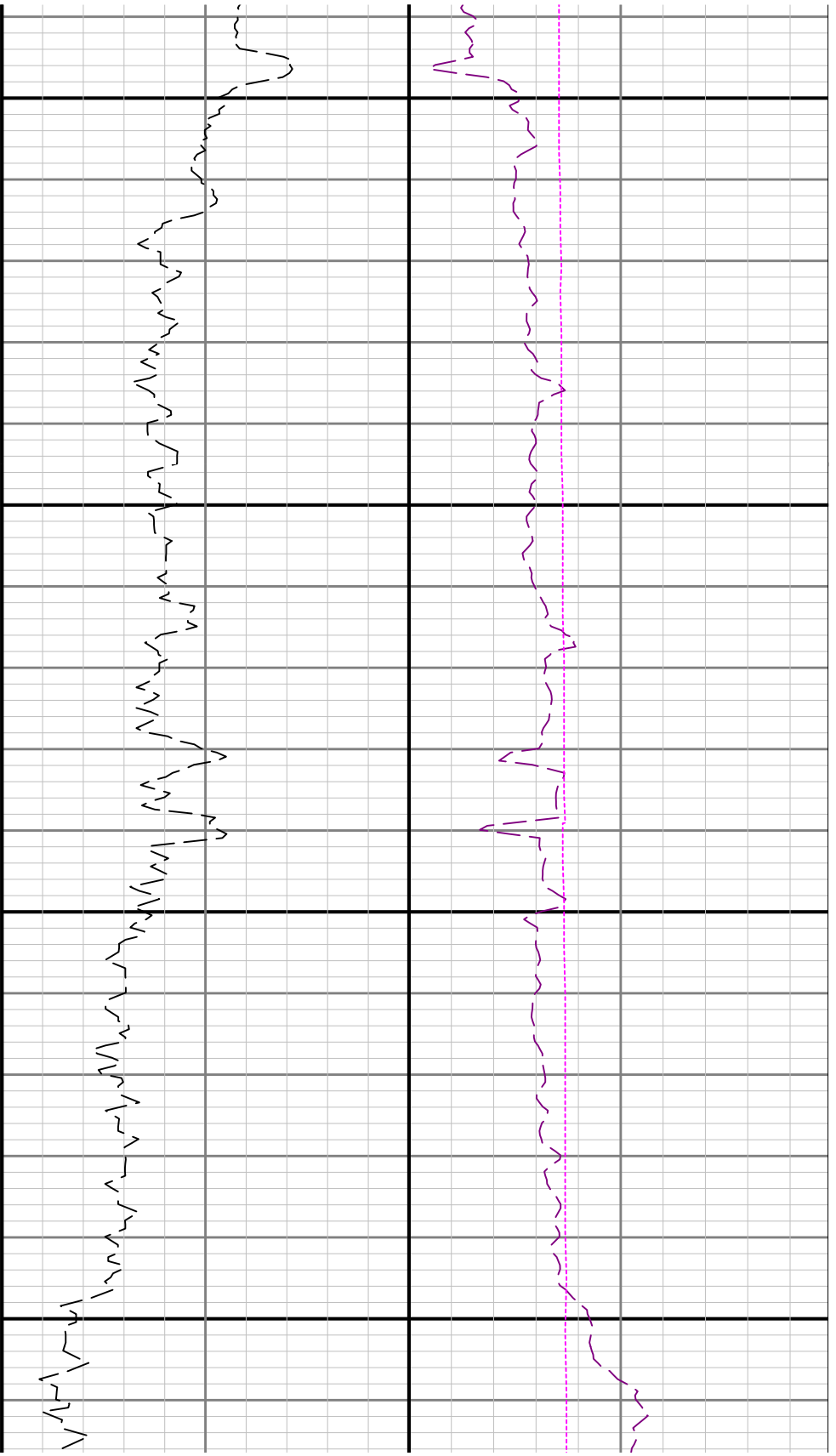
Curve Mnemonics

Presented Curves	Description	Units
ROPA	Depth Averaged ROP 3 ft Average	ft/h
WOBA	Weight On Bit, Average 1 ft Average	klb
GRAM	Gamma Ray - Apparent - Memory 0.5 ft Average	API
TCDM	Directional Real-Time Survey Temperature	degF

<div> <div>BAKER HUGHES</div> <div>a GE company</div> </div>	Company	Noble Energy	
	Well	Wells Ranch BB09-626	
	Interval	Date From: 2018-10-02 20:41	Top: 1945.00 ft
	Created	Date To: 2018-10-05 18:22	Bottom: 16983.00 ft
		2018-10-05 21:51:32	

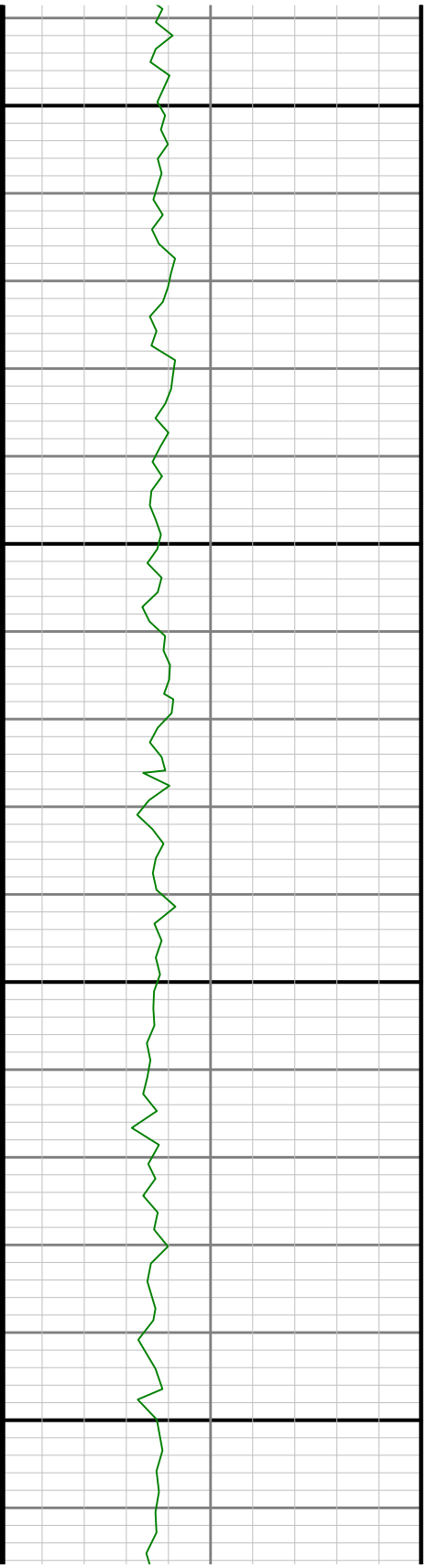
Gamma Ray - Apparent 0.5 ft Average GRAM	TVD 1:2	Depth Averaged ROP 3 ft Average ROPA	Weight On Bit, Average 1 ft Average WOBA
0 300		1000 0	0 50
API		ft/h	klb

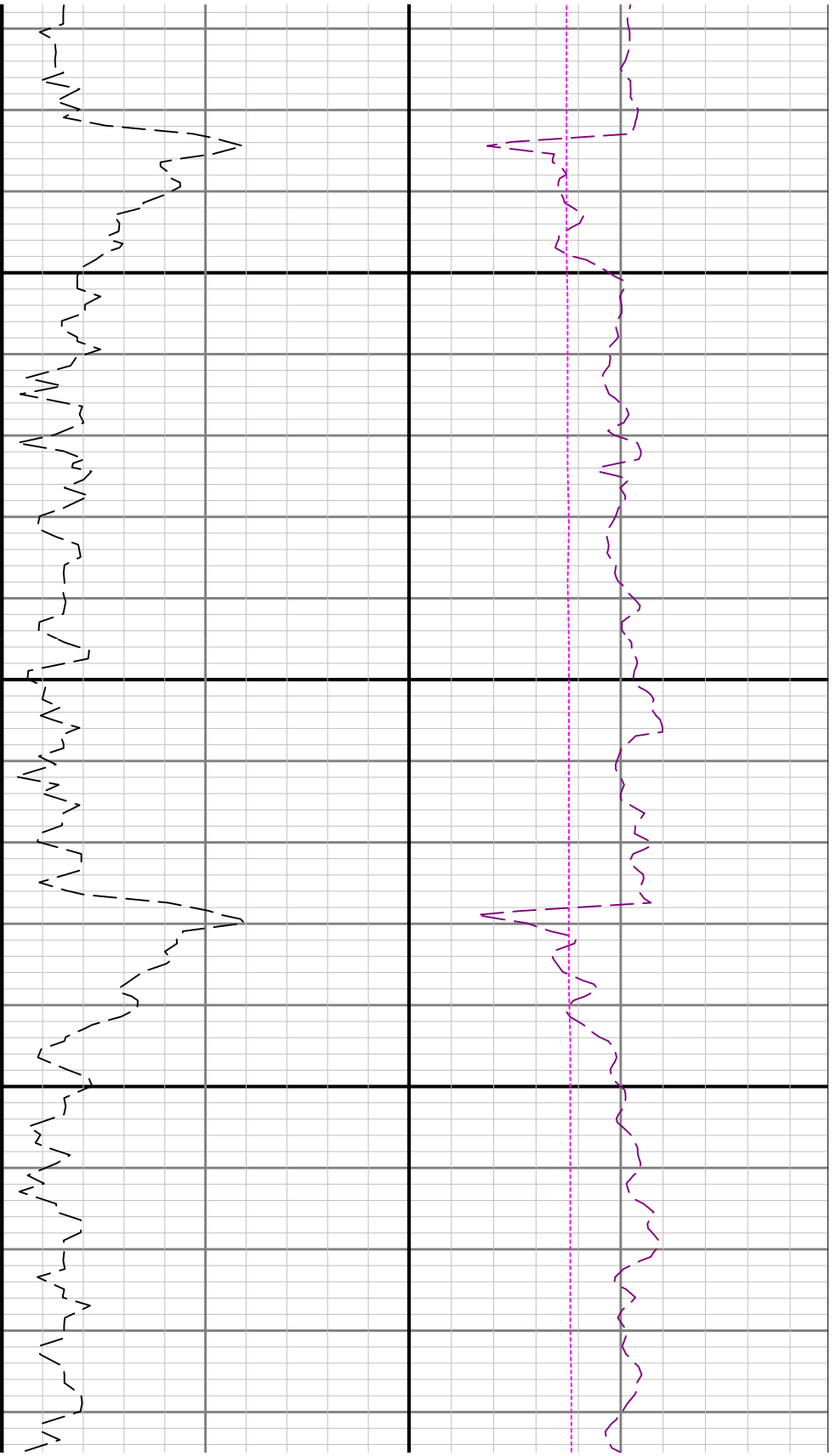




2100

2200

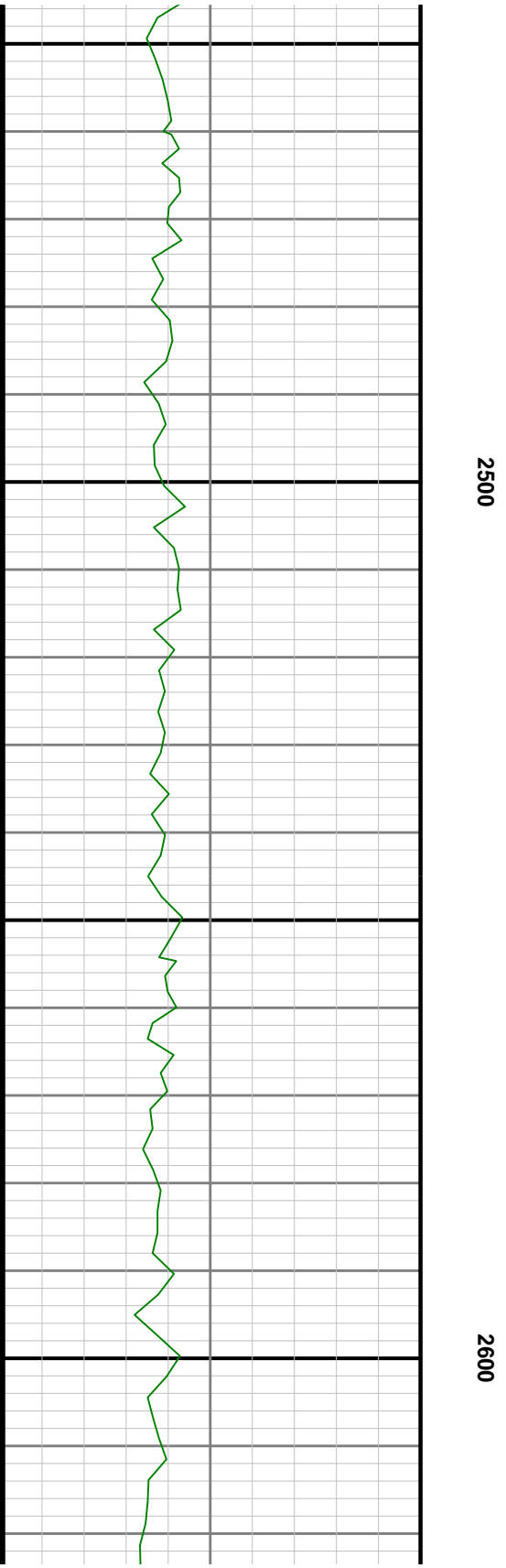
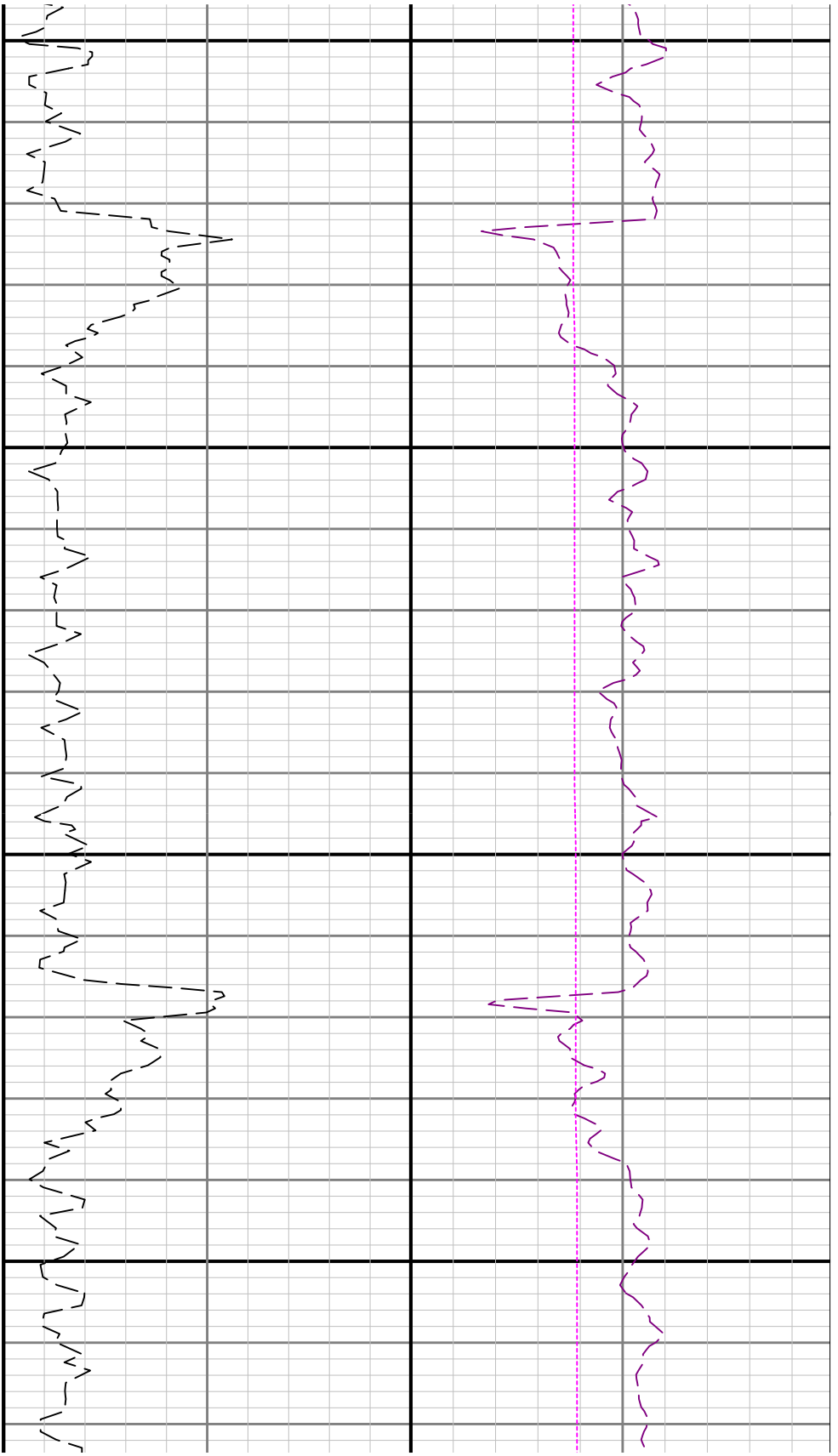


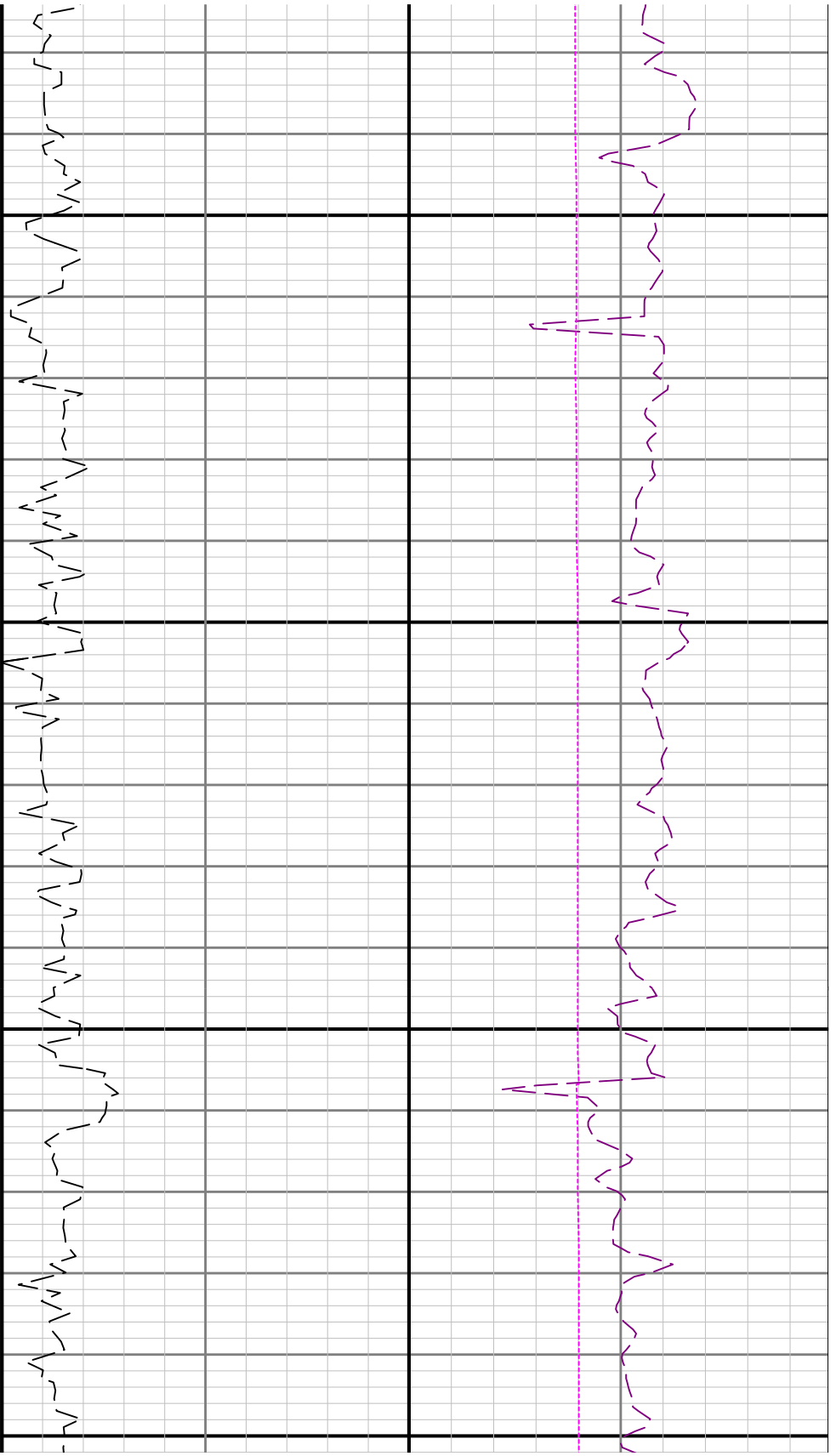


2300

2400

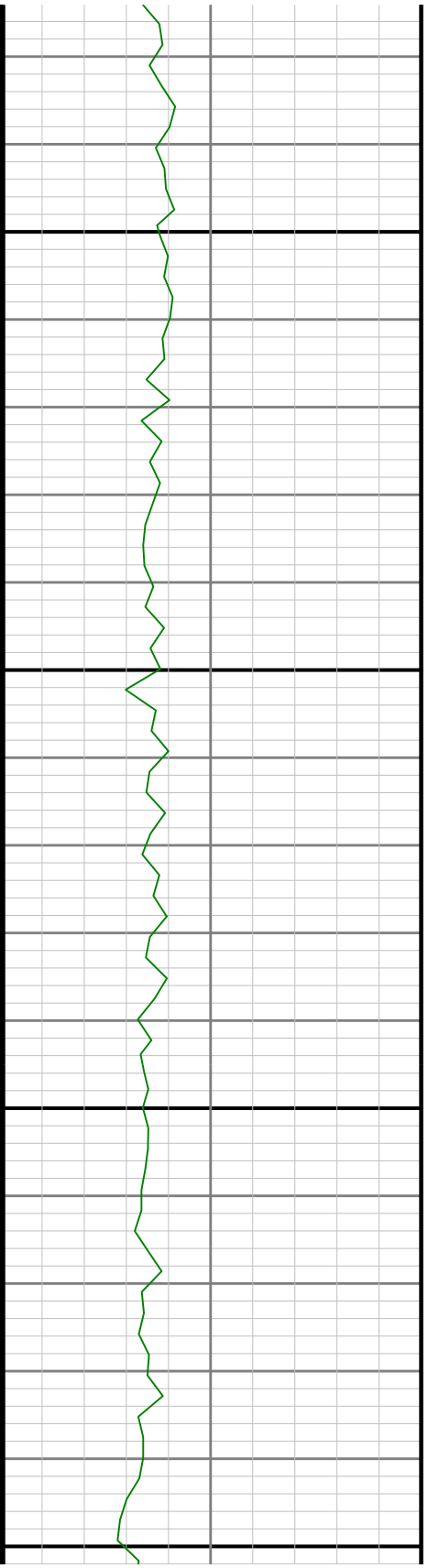


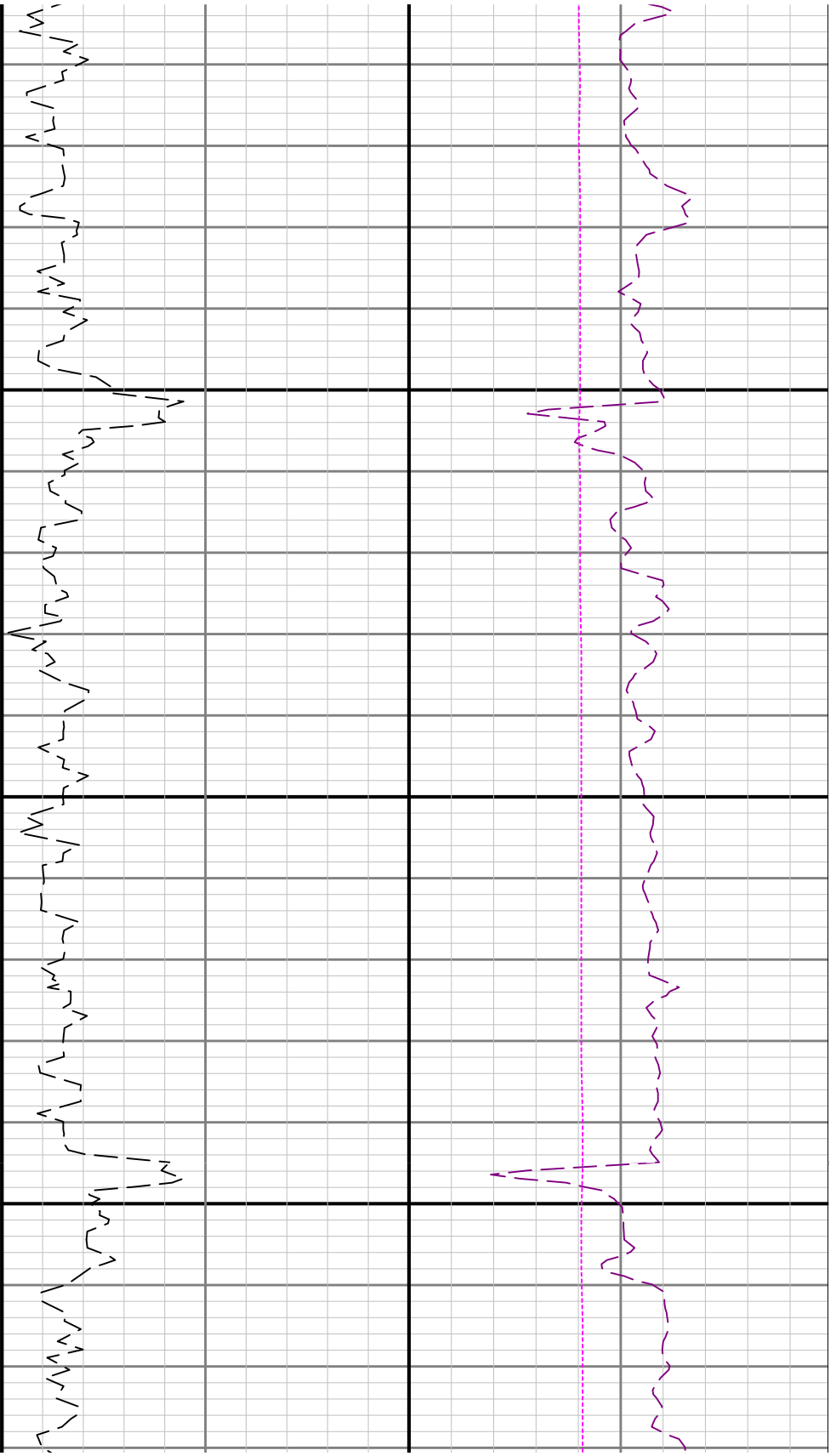




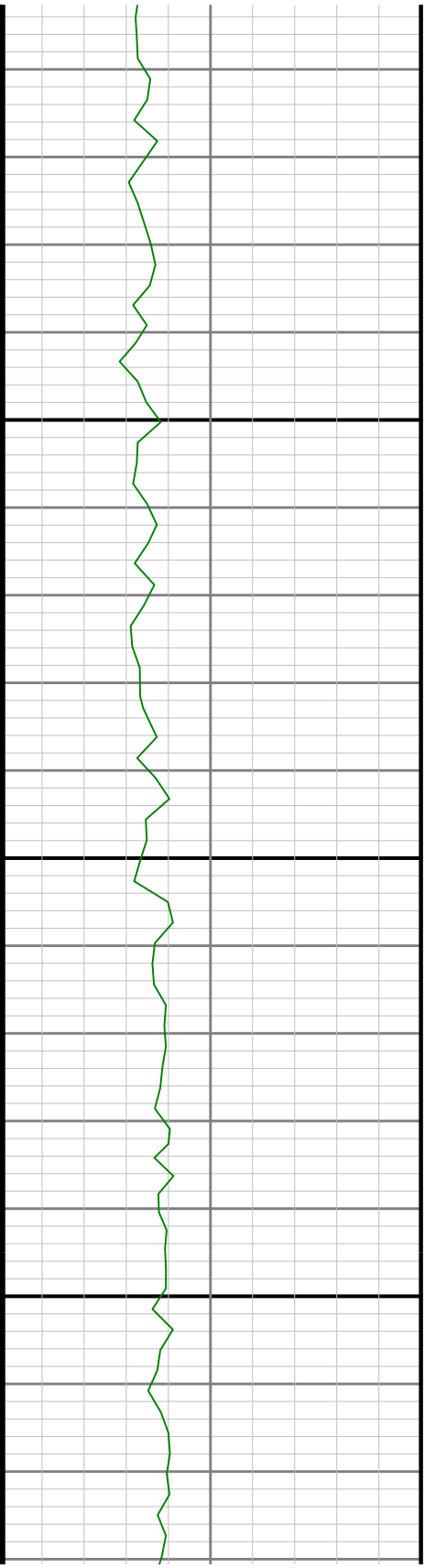
2700

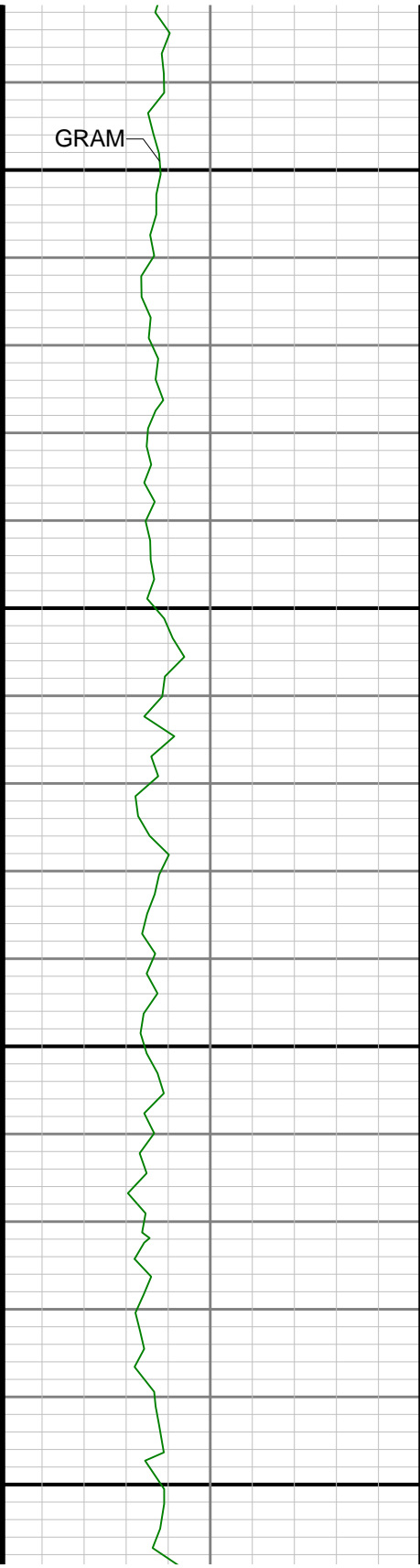
2800





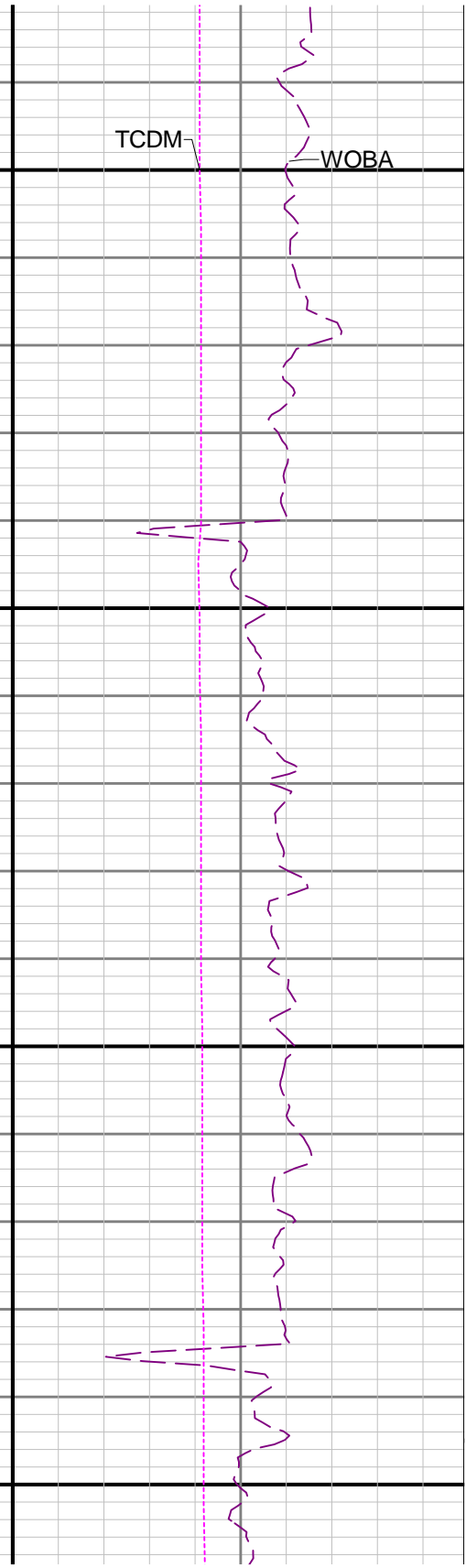
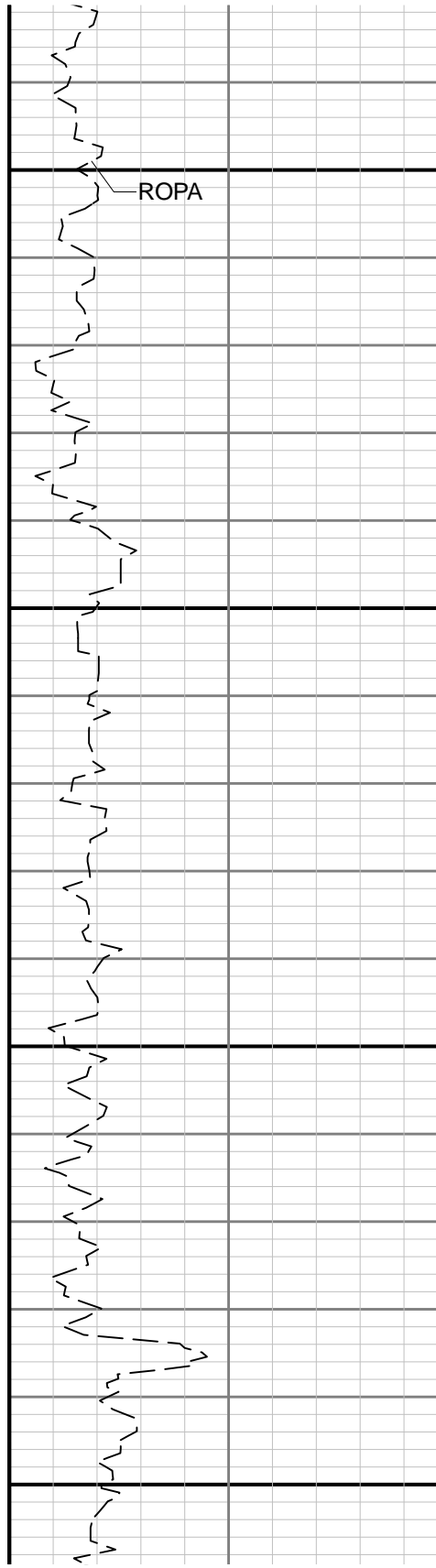
2900

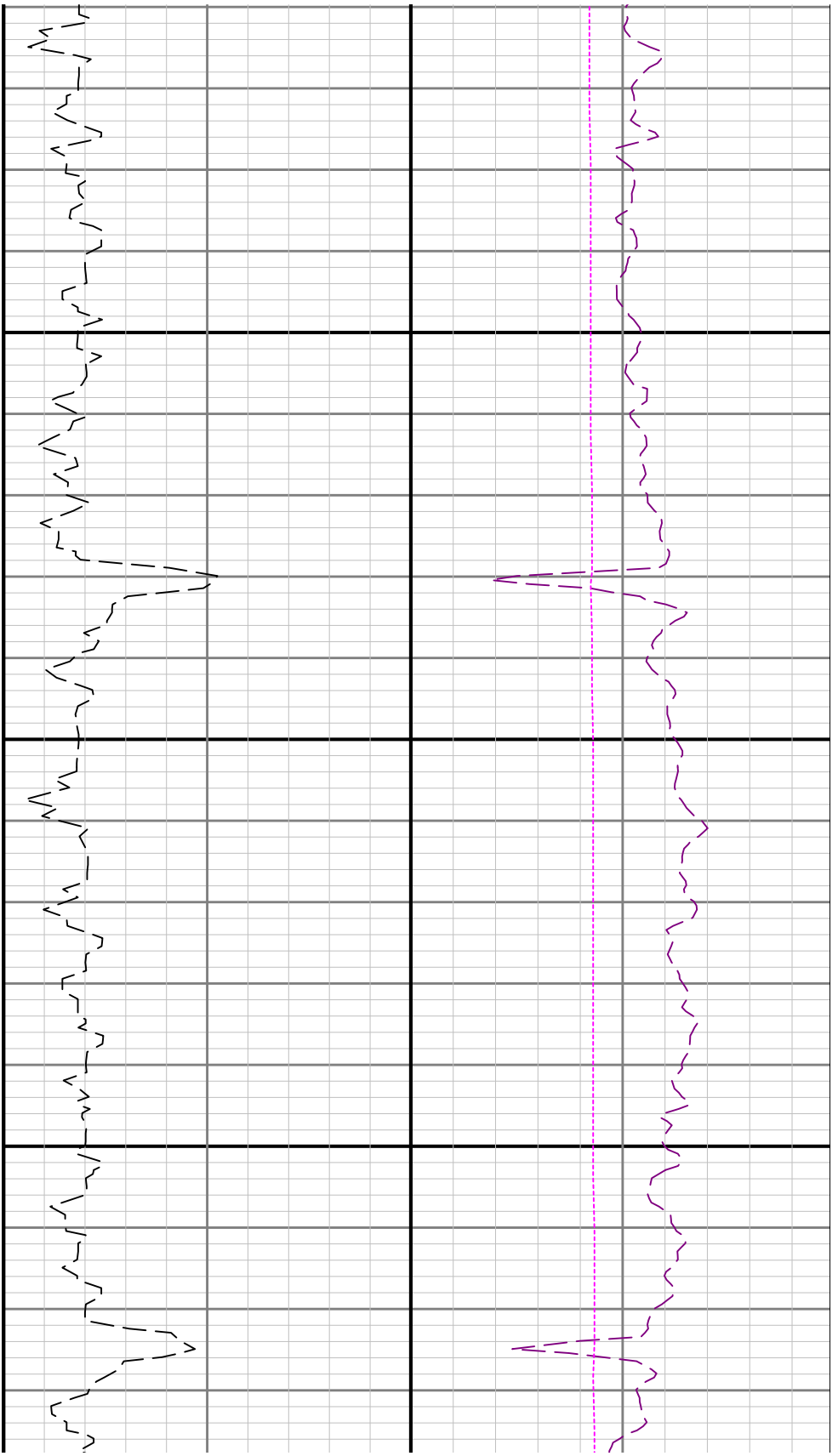




3000

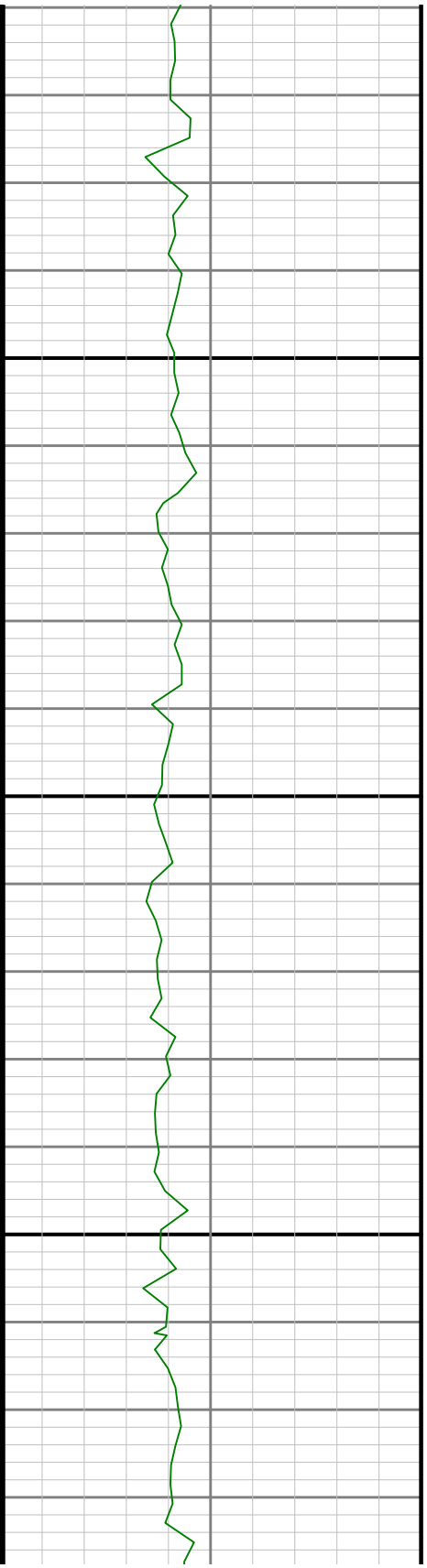
3100

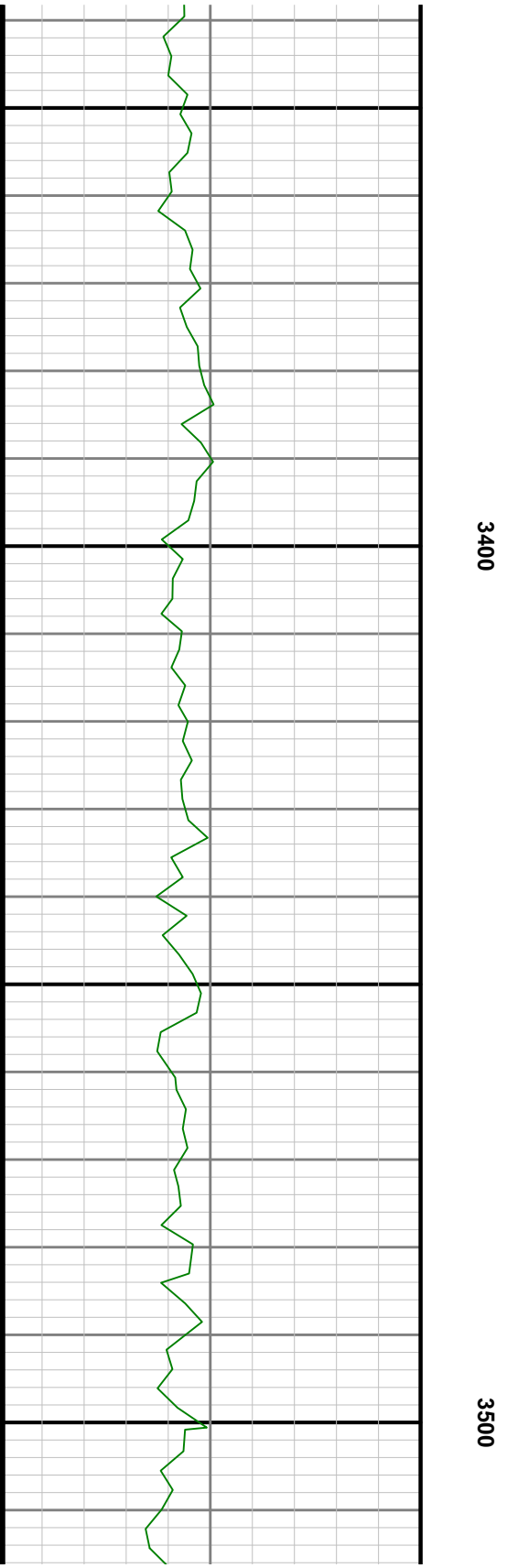
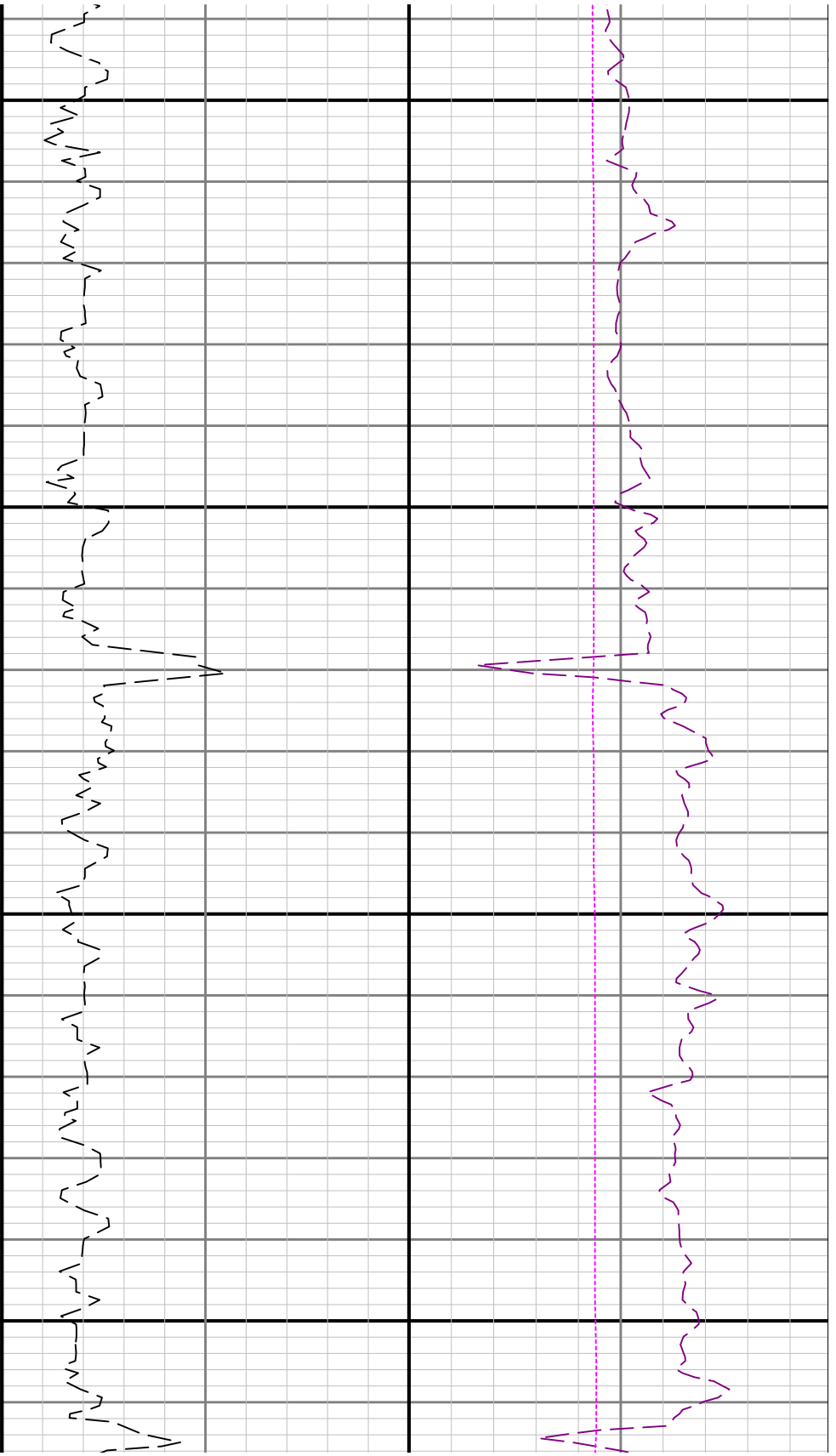


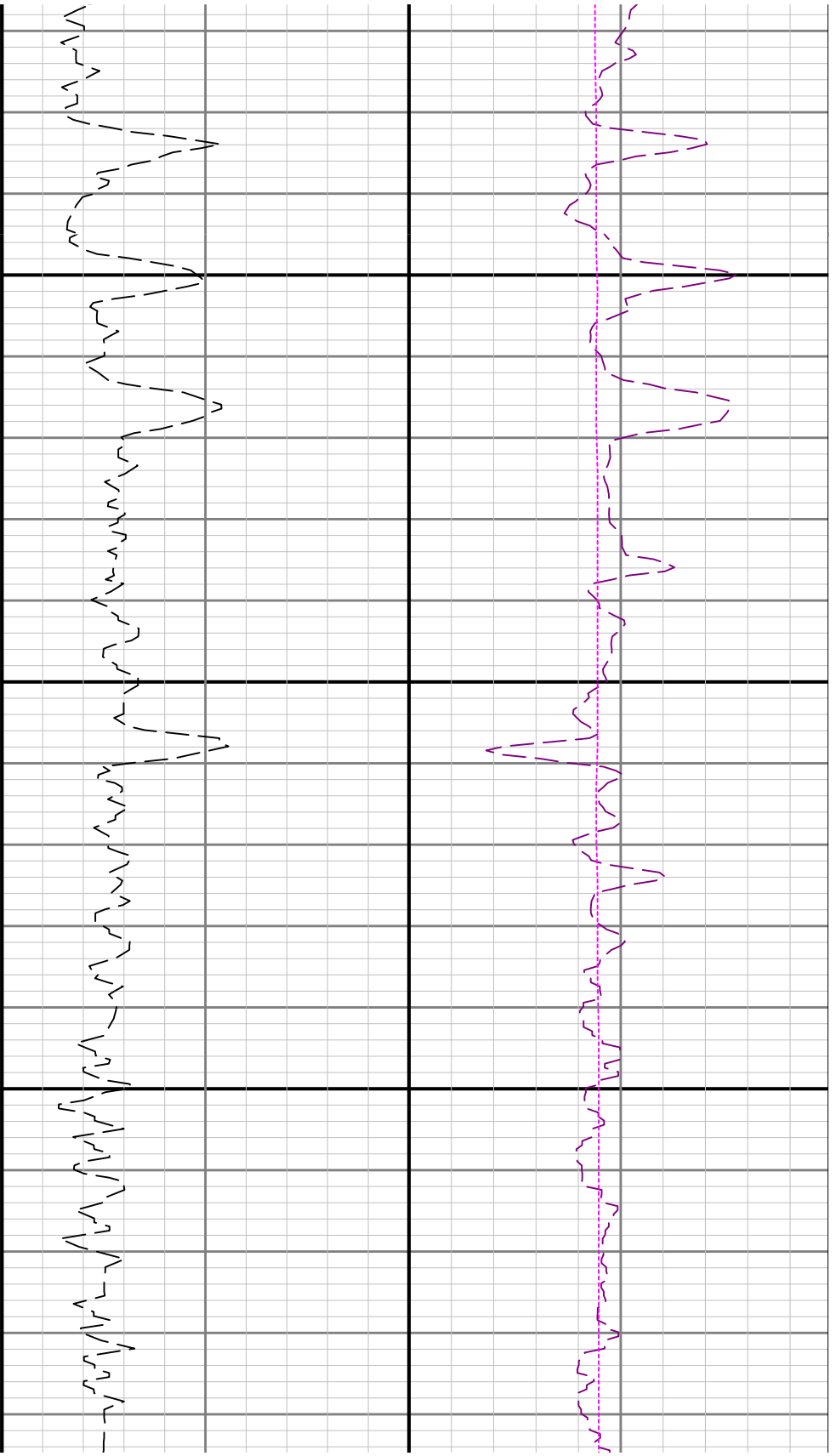


3200

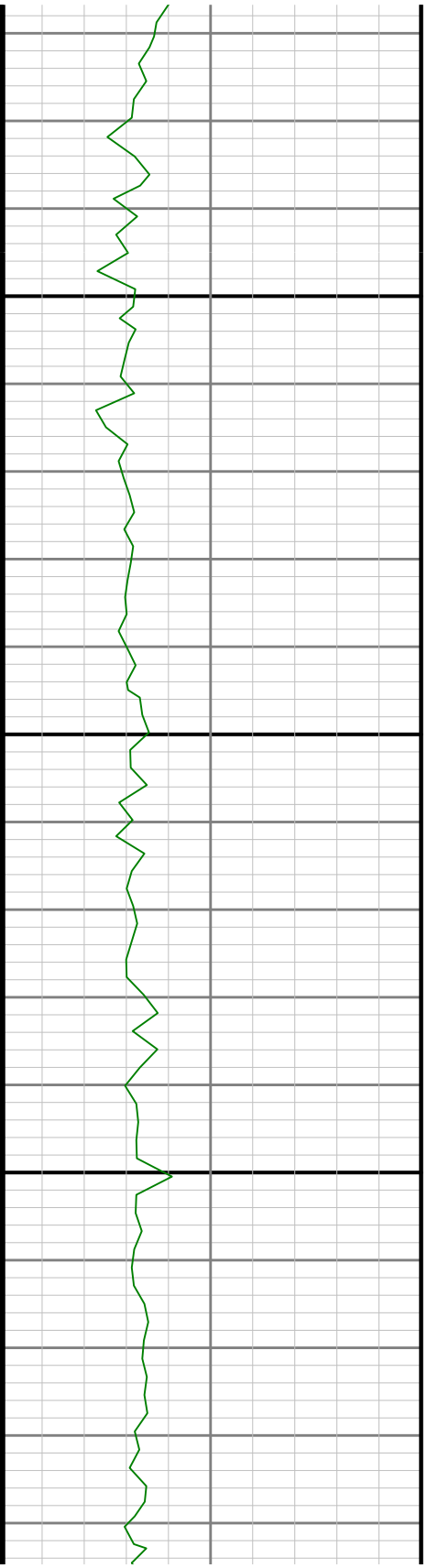
3300

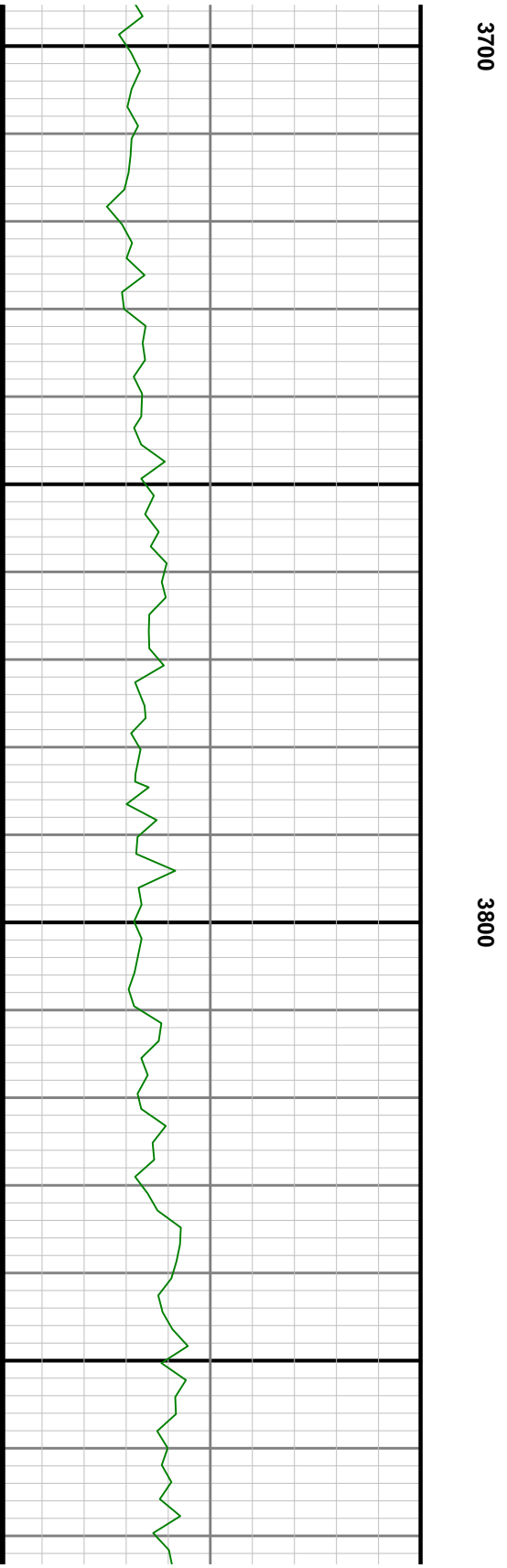
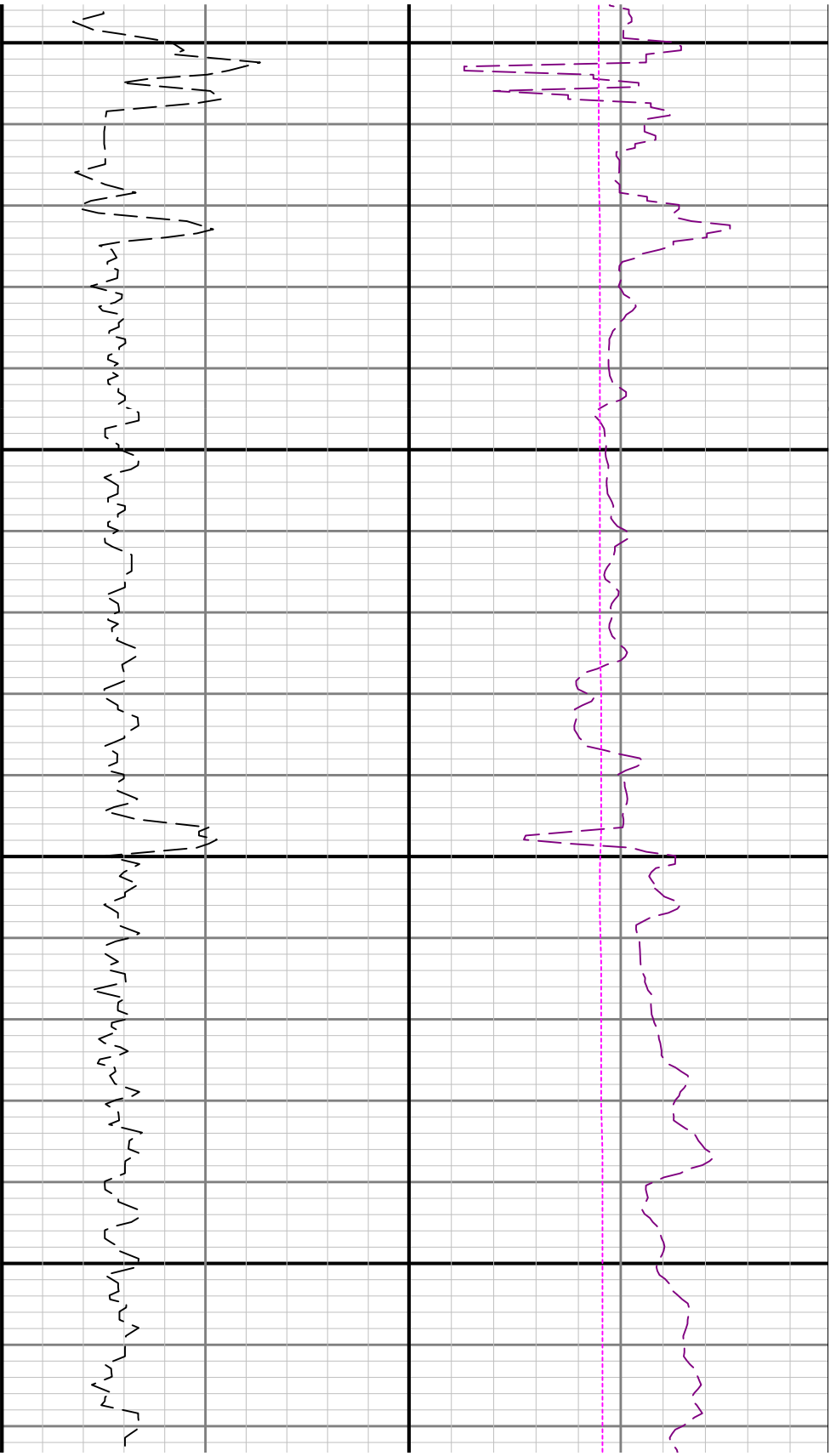


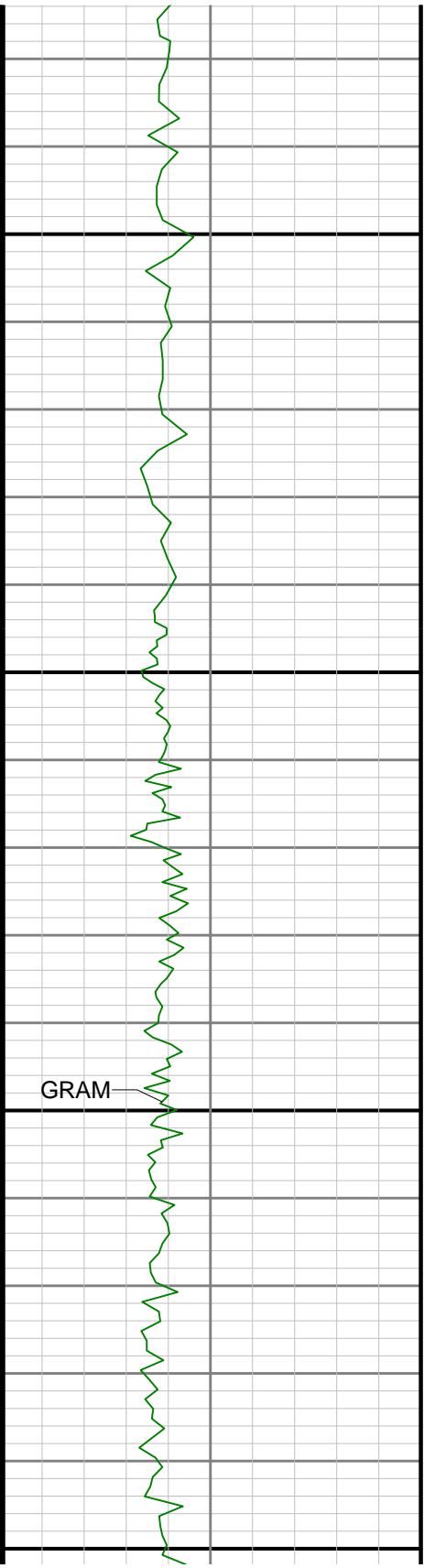




3600

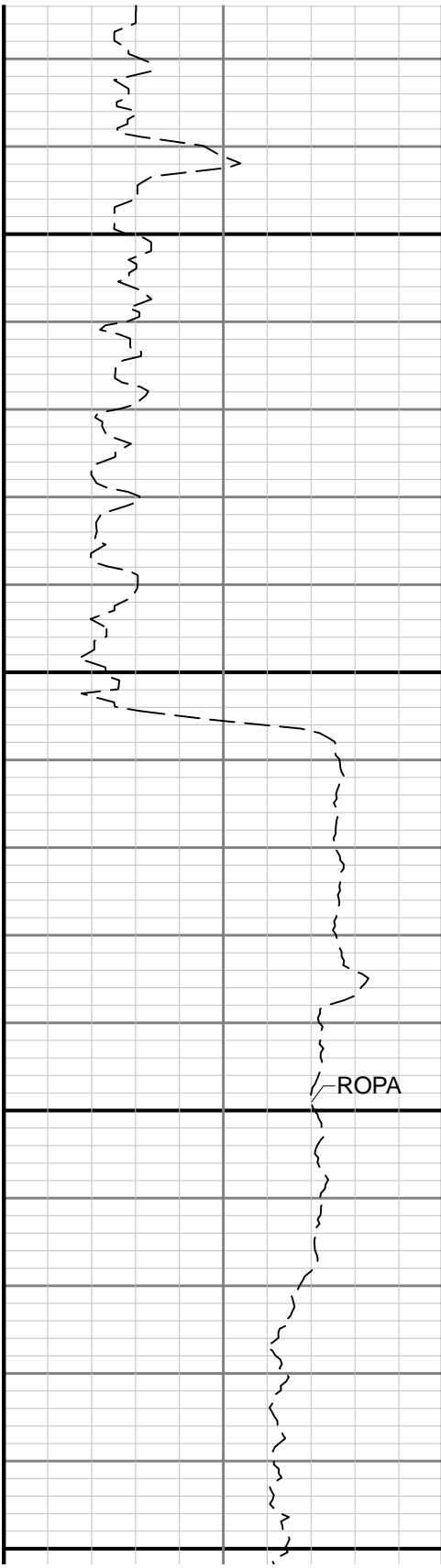


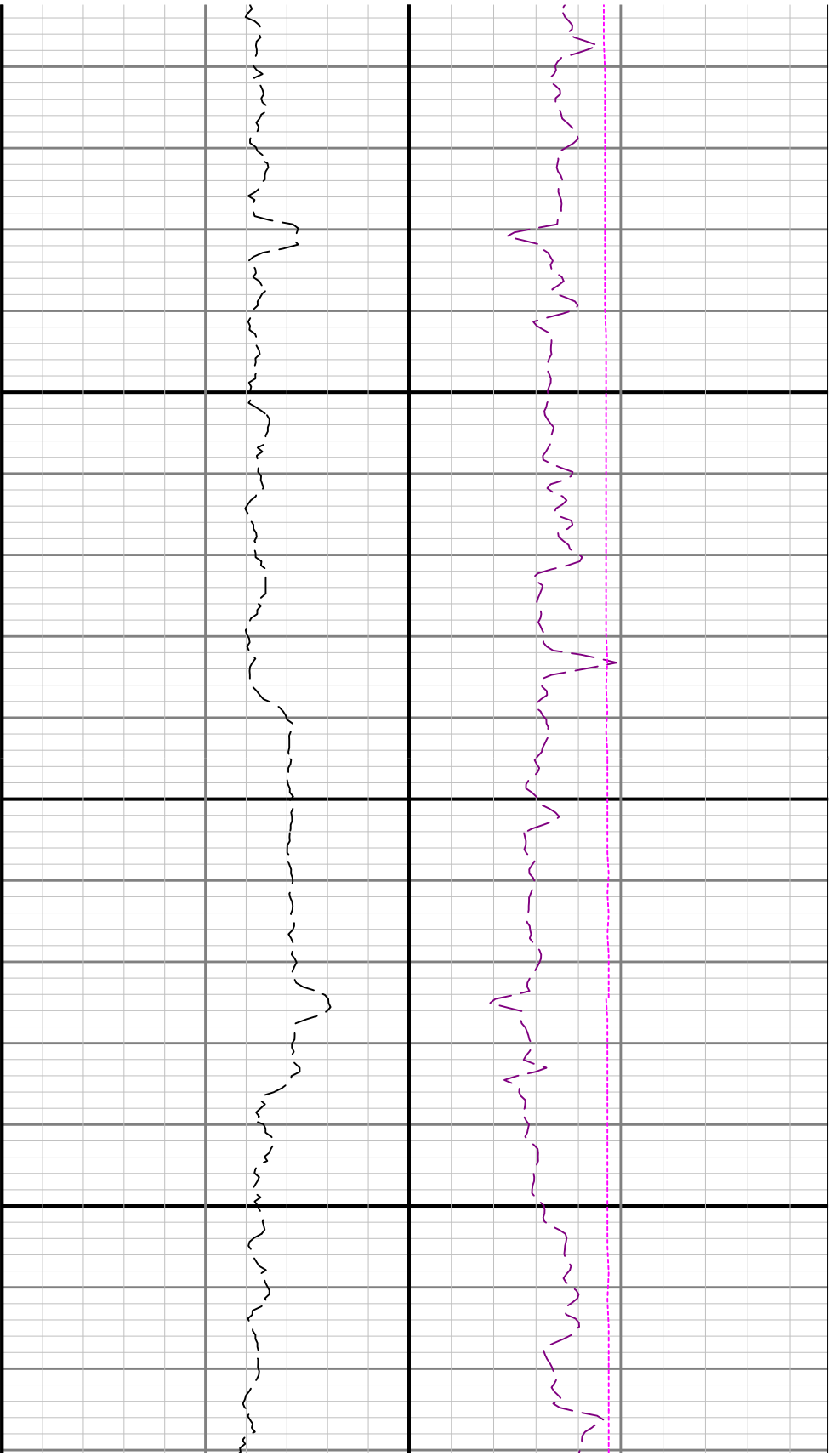




3900

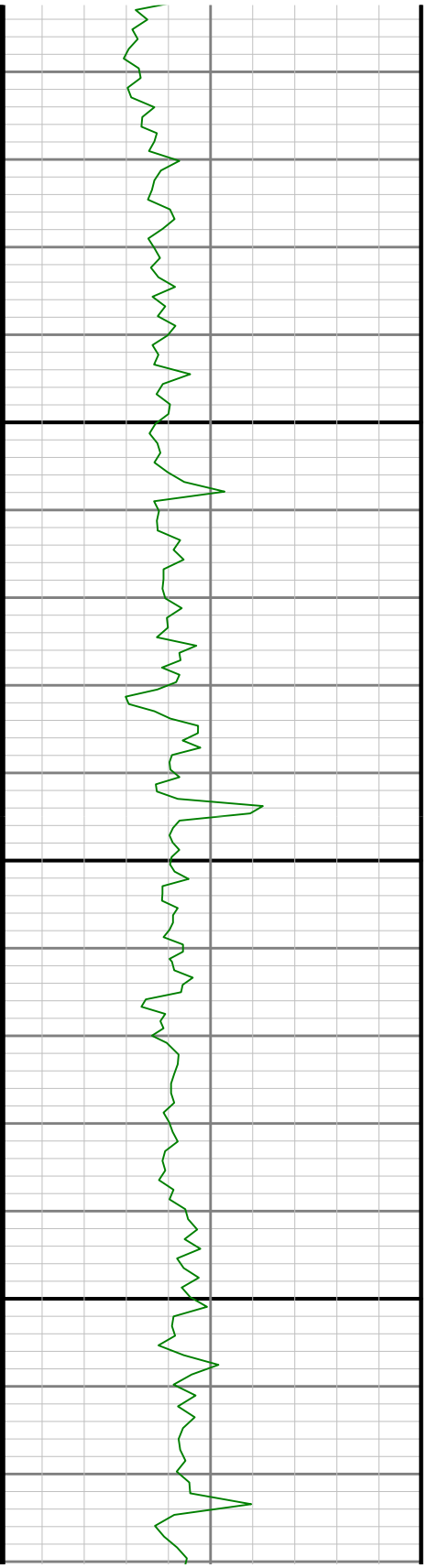
4000

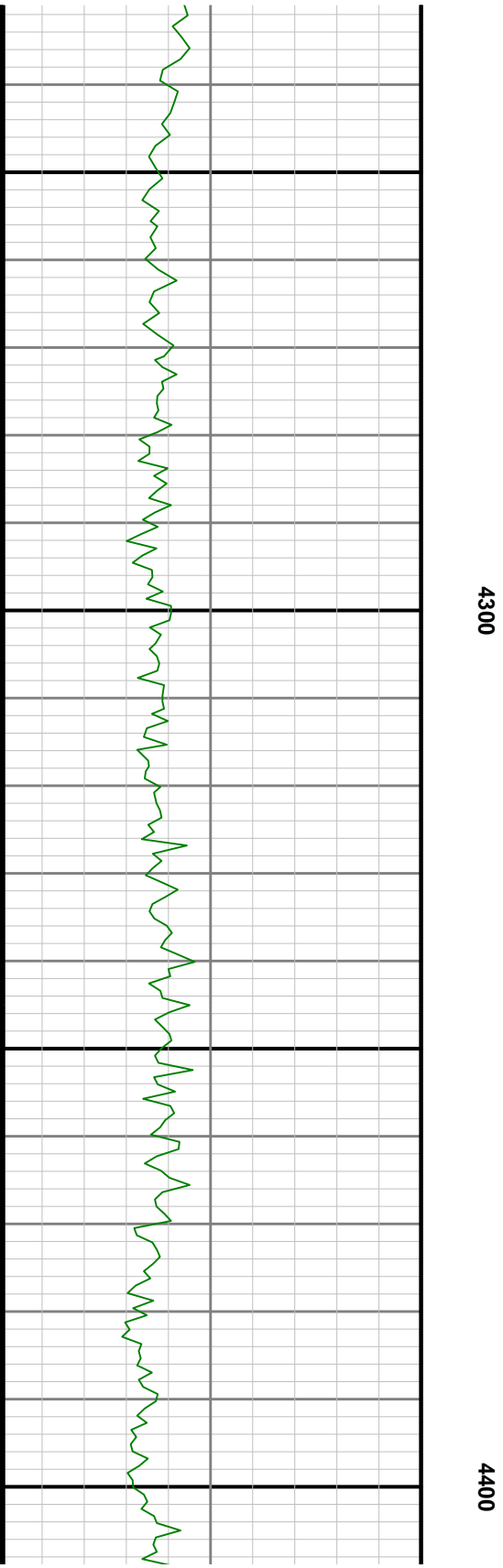
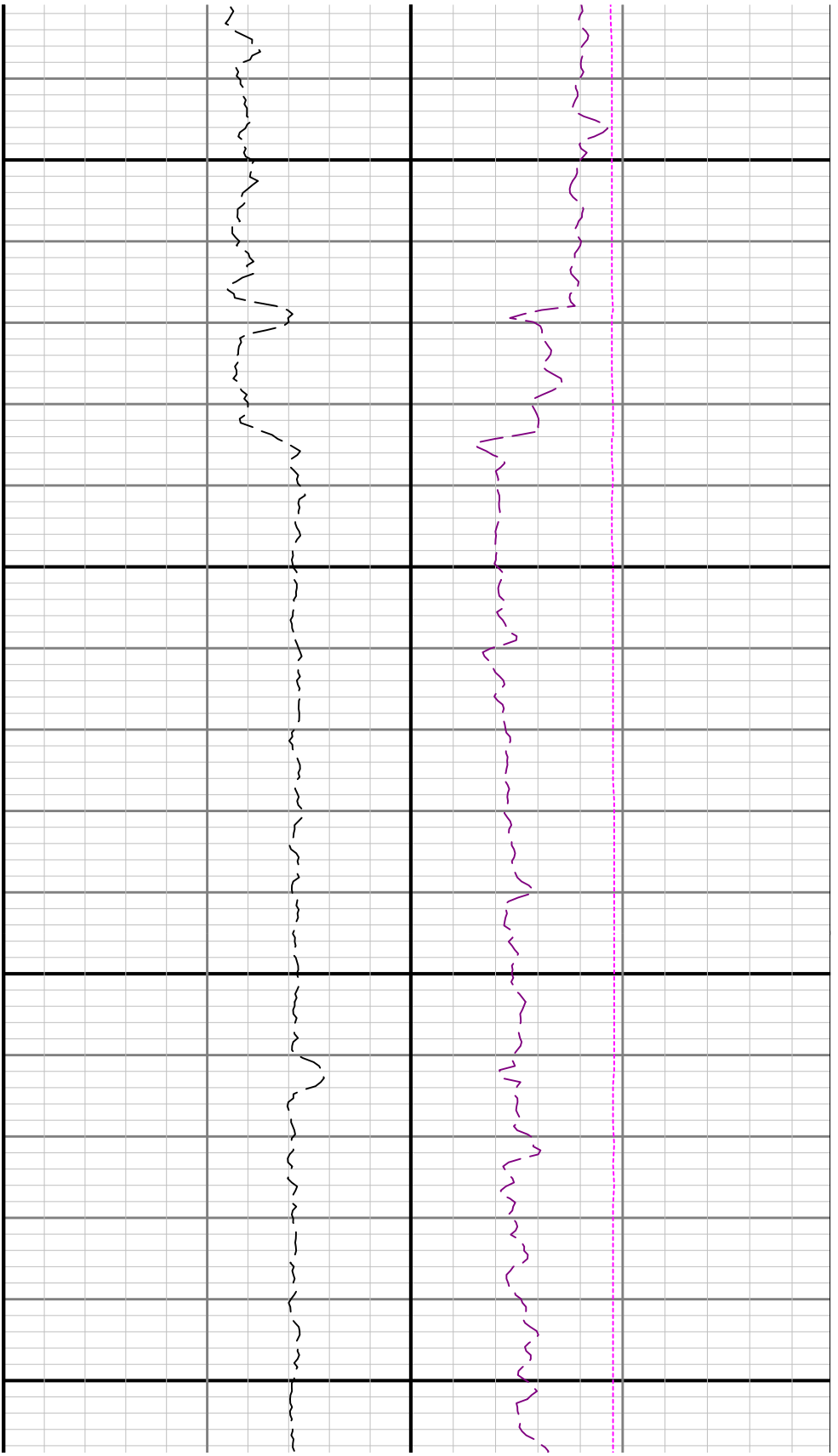


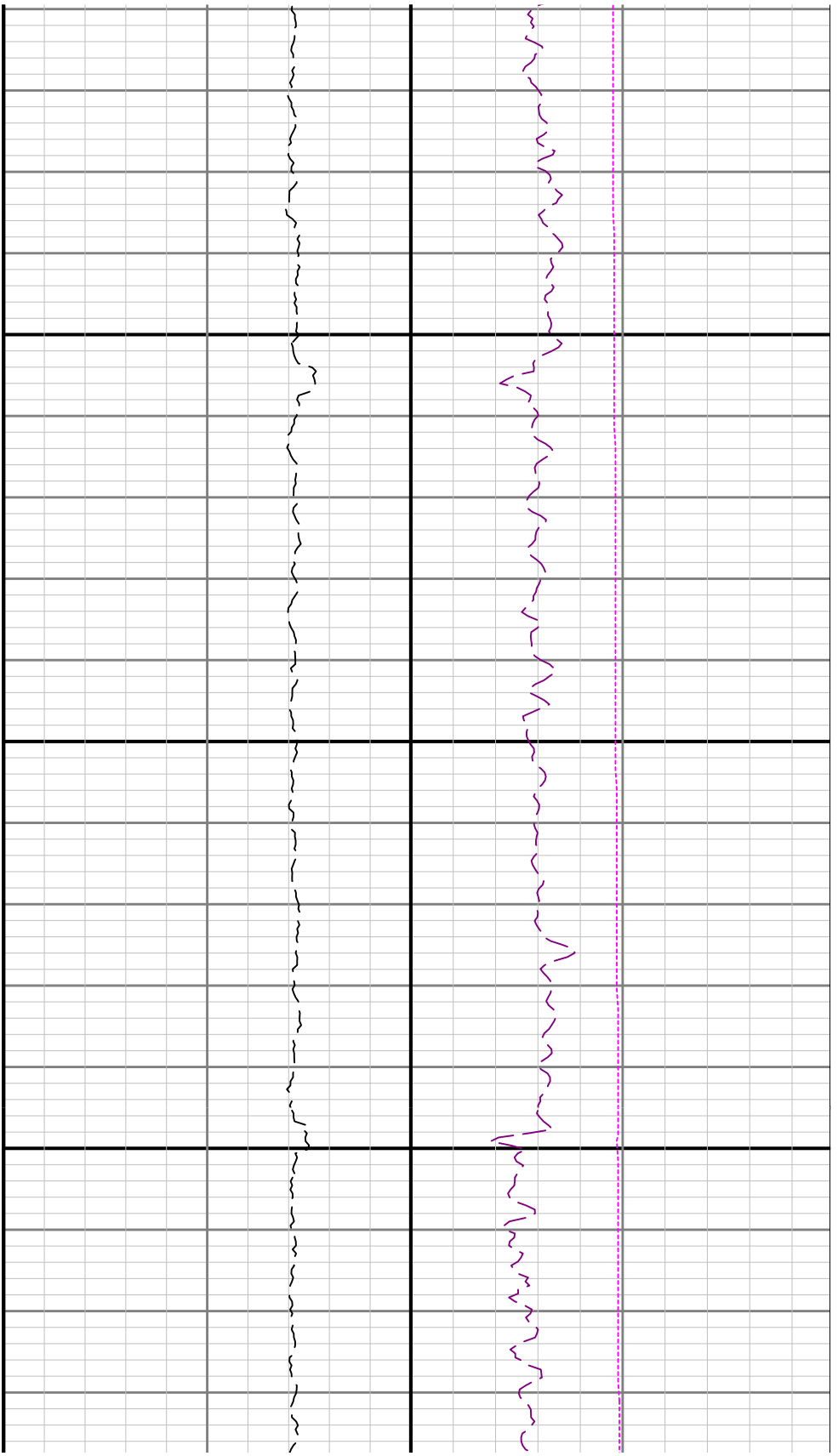


4100

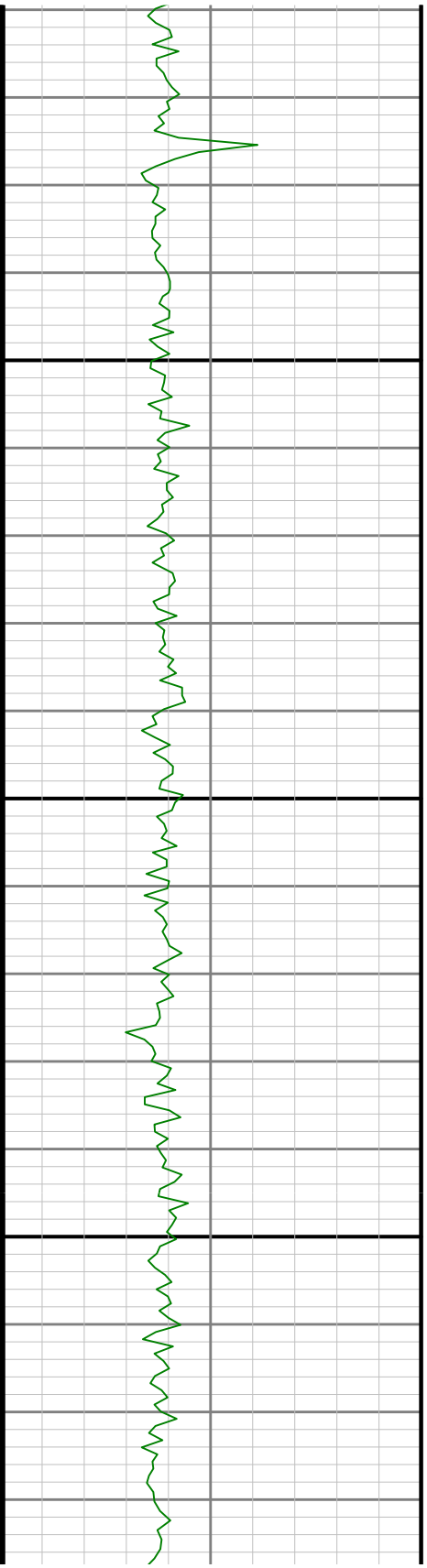
4200

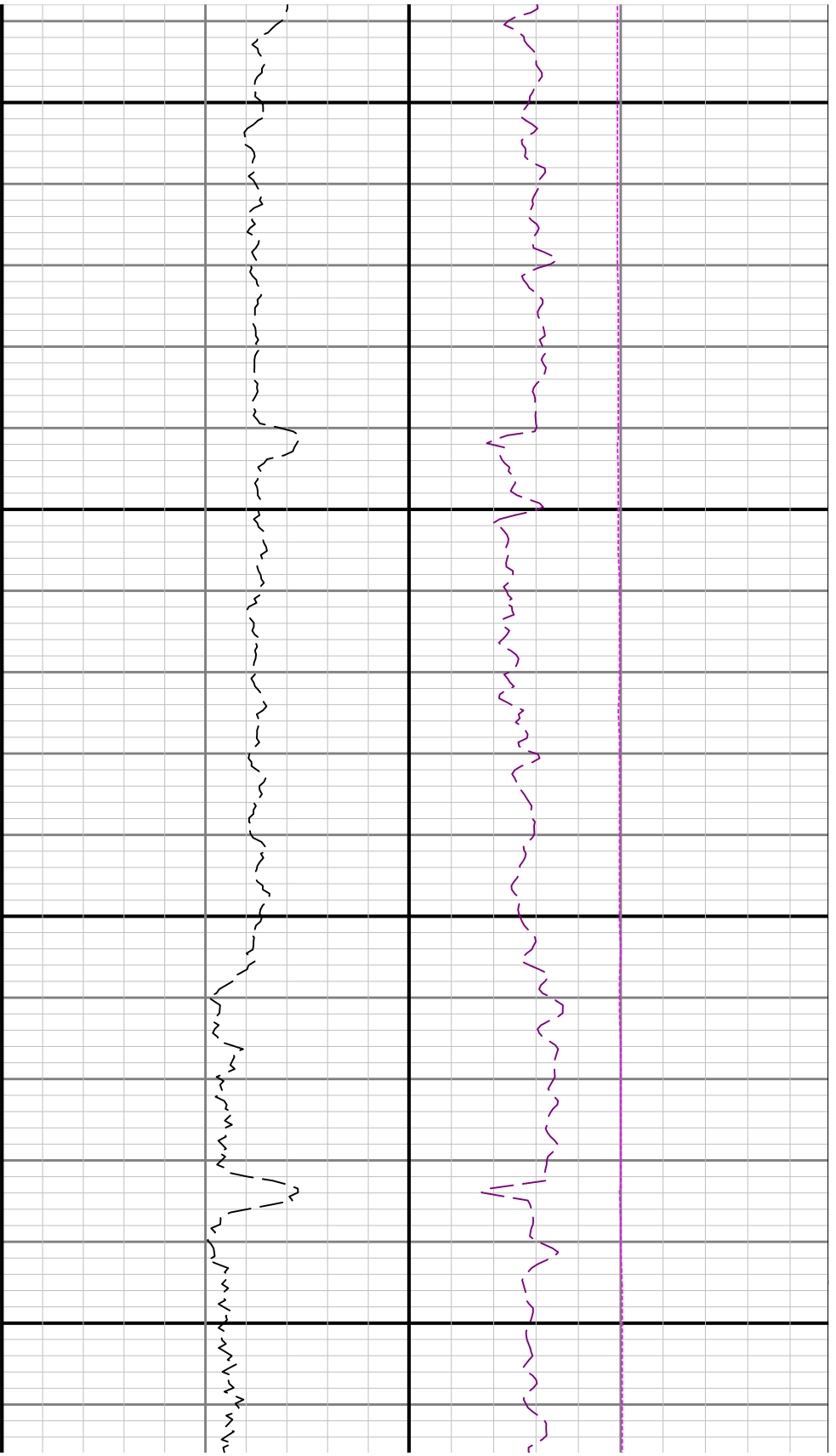






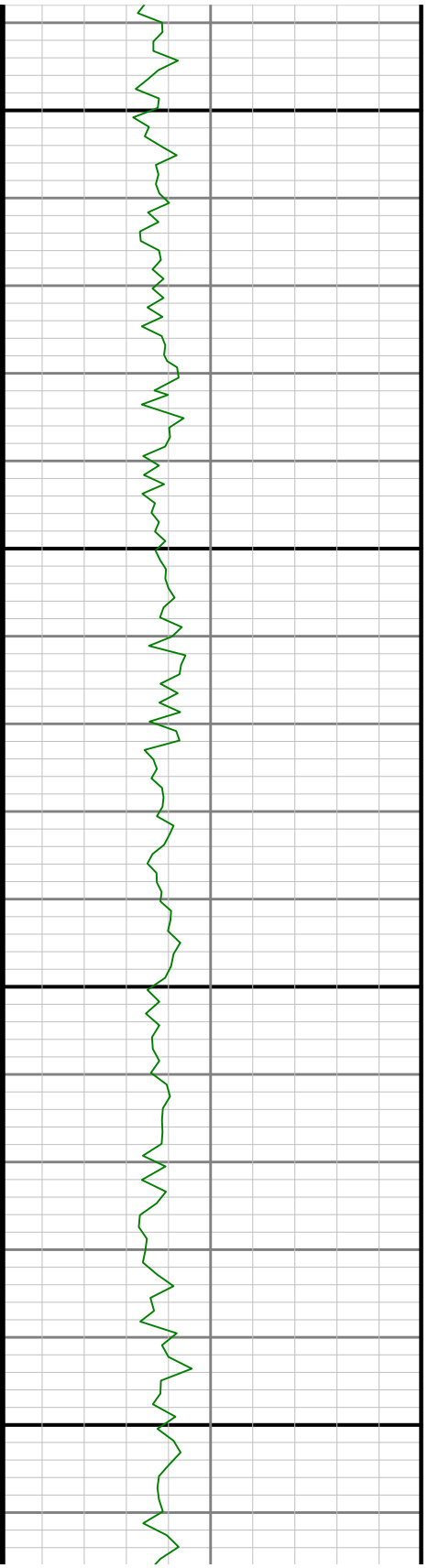
4500

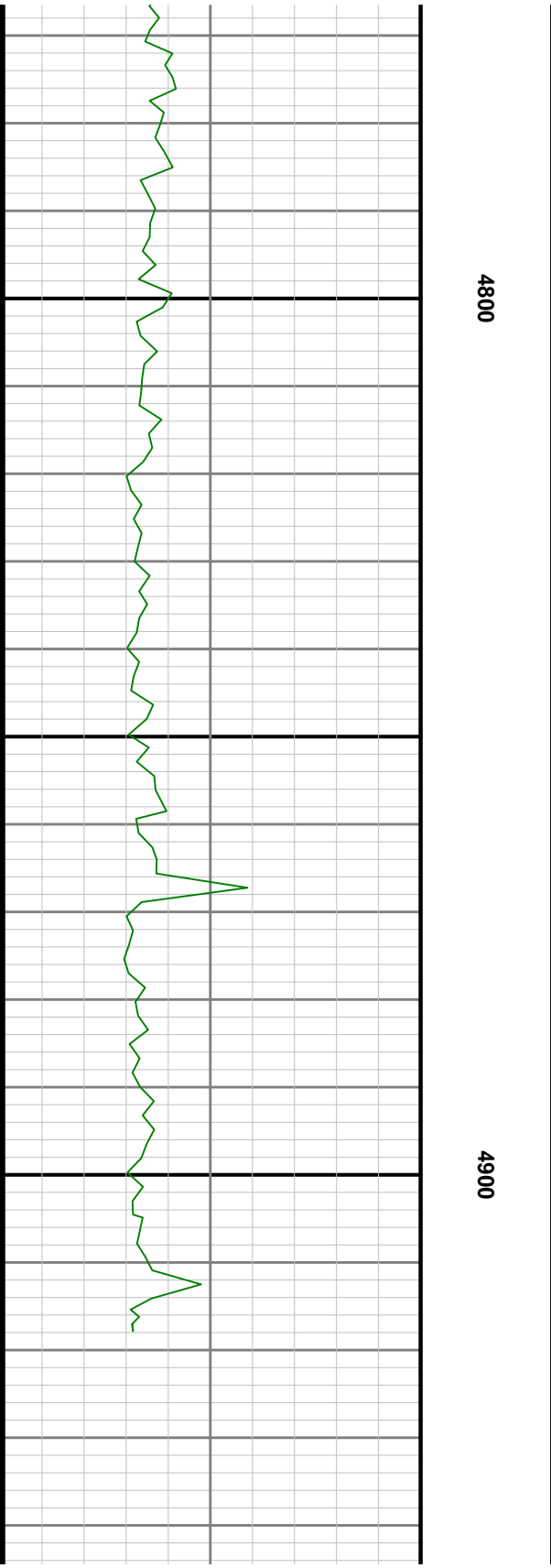
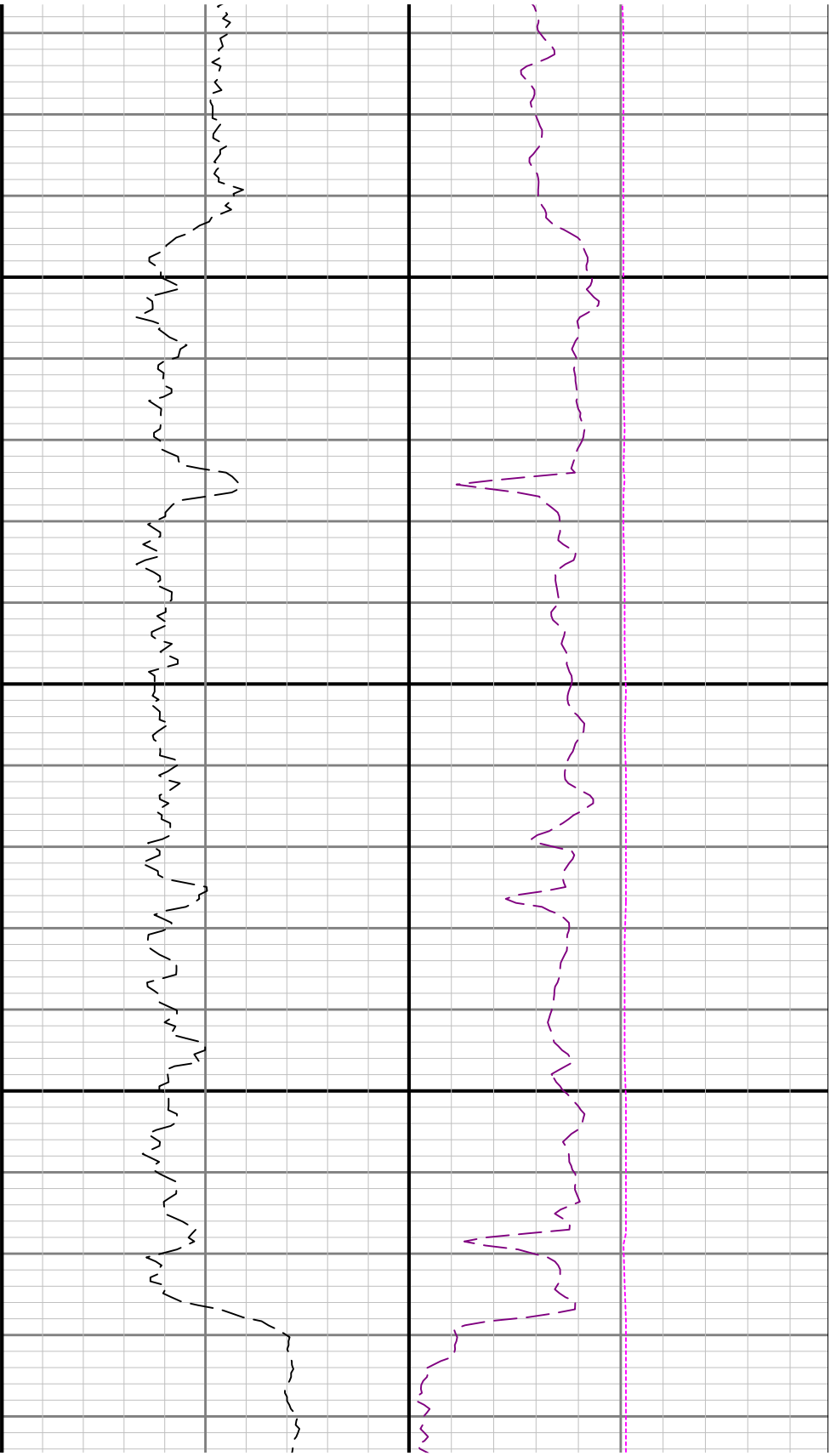


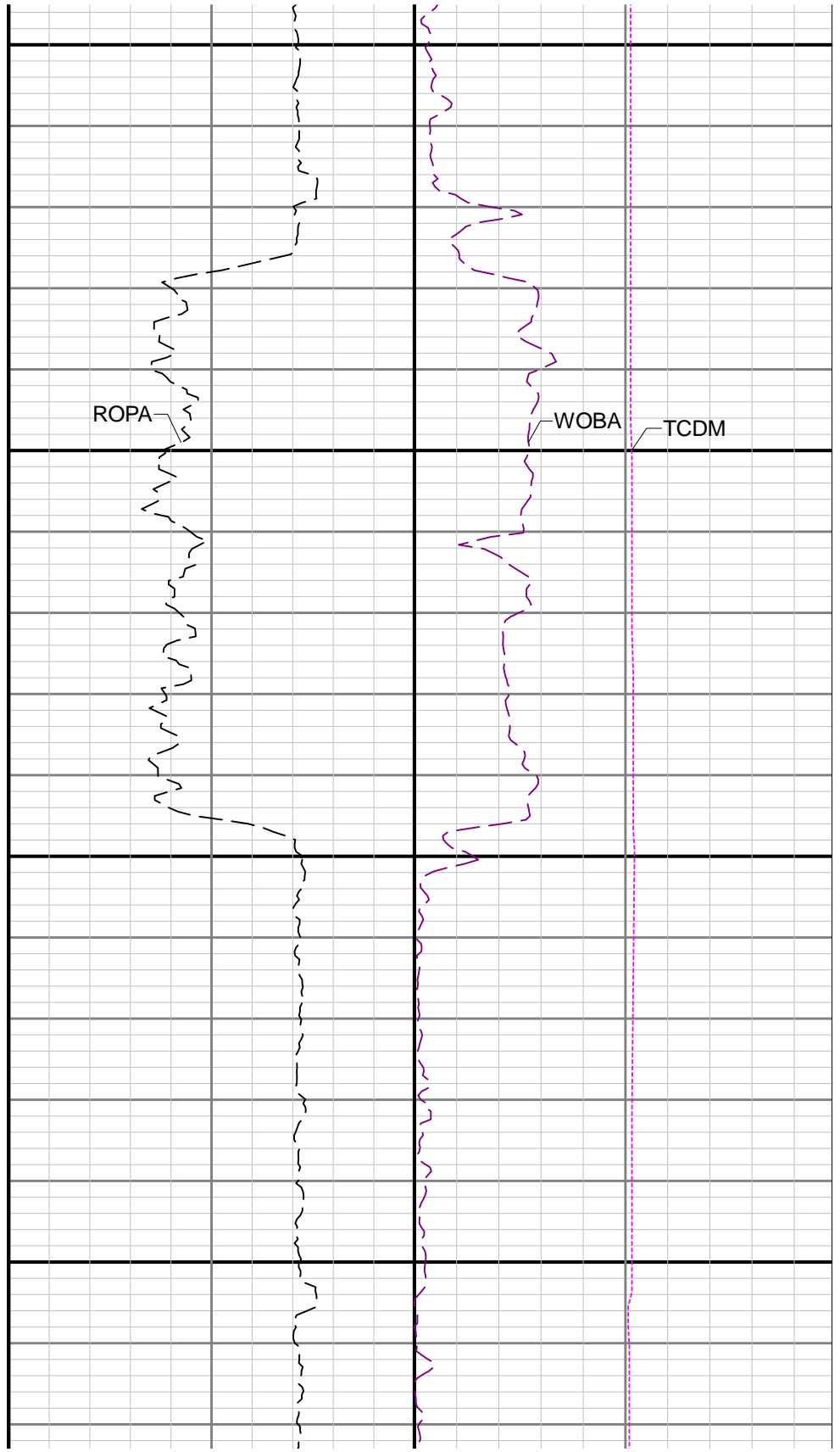
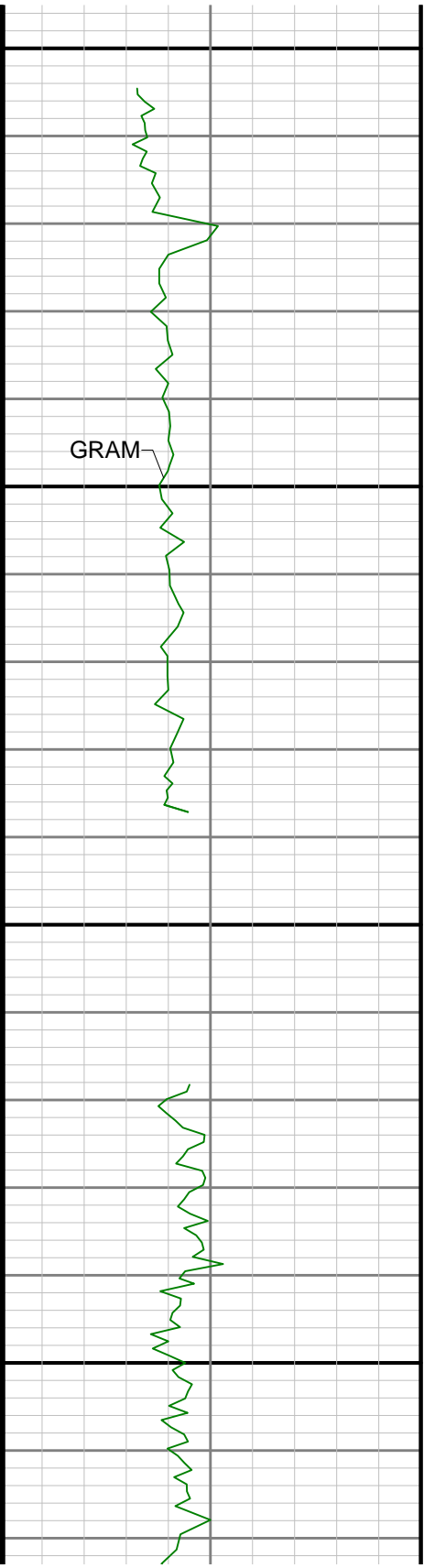


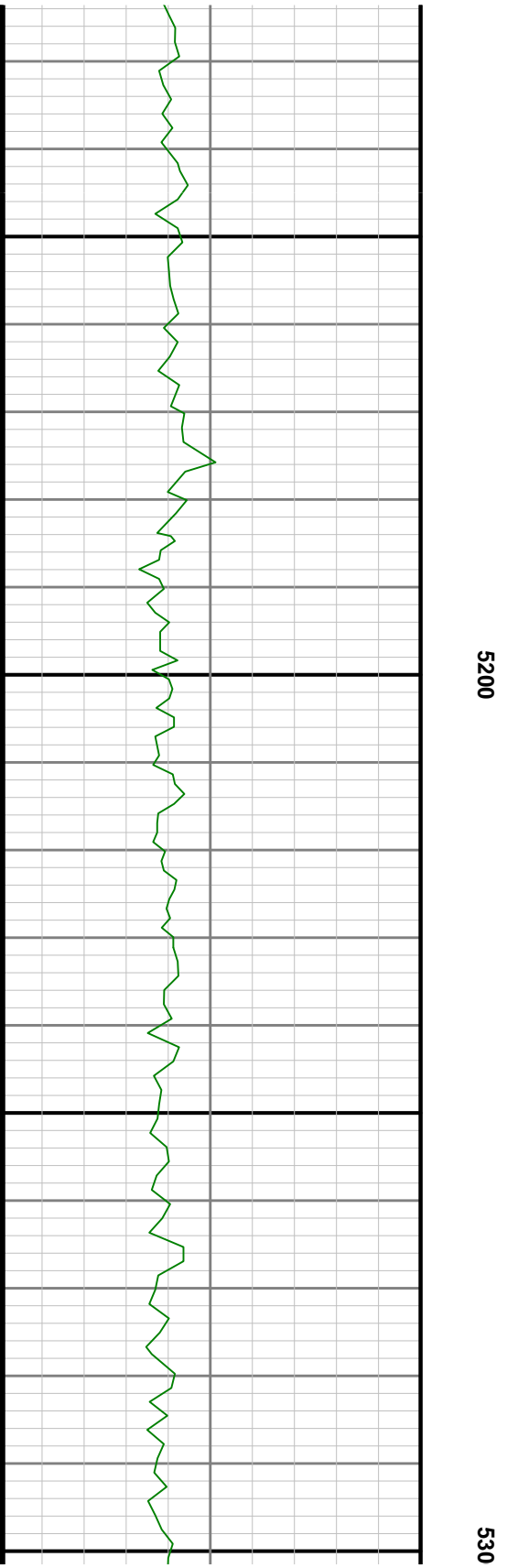
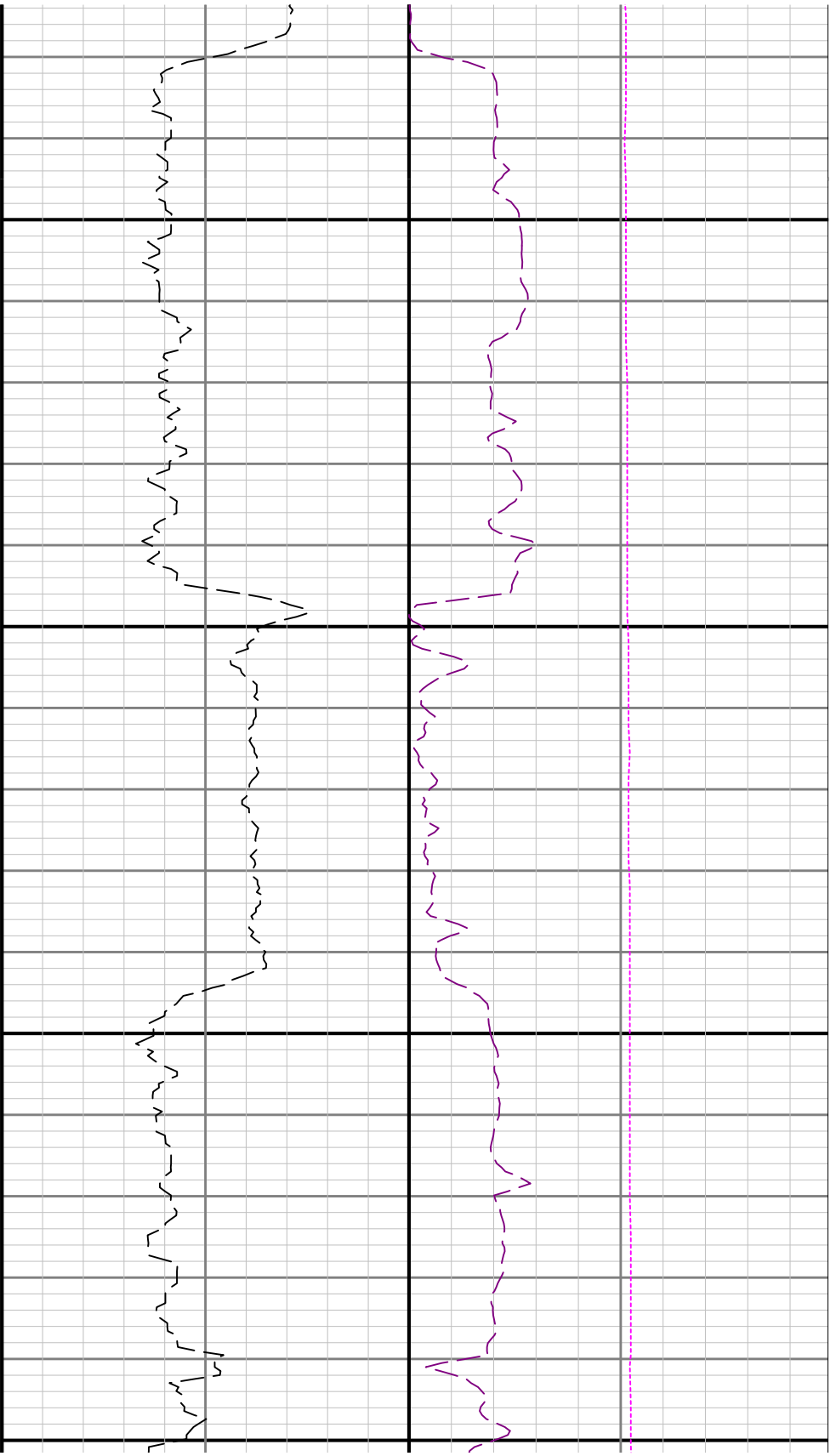
4600

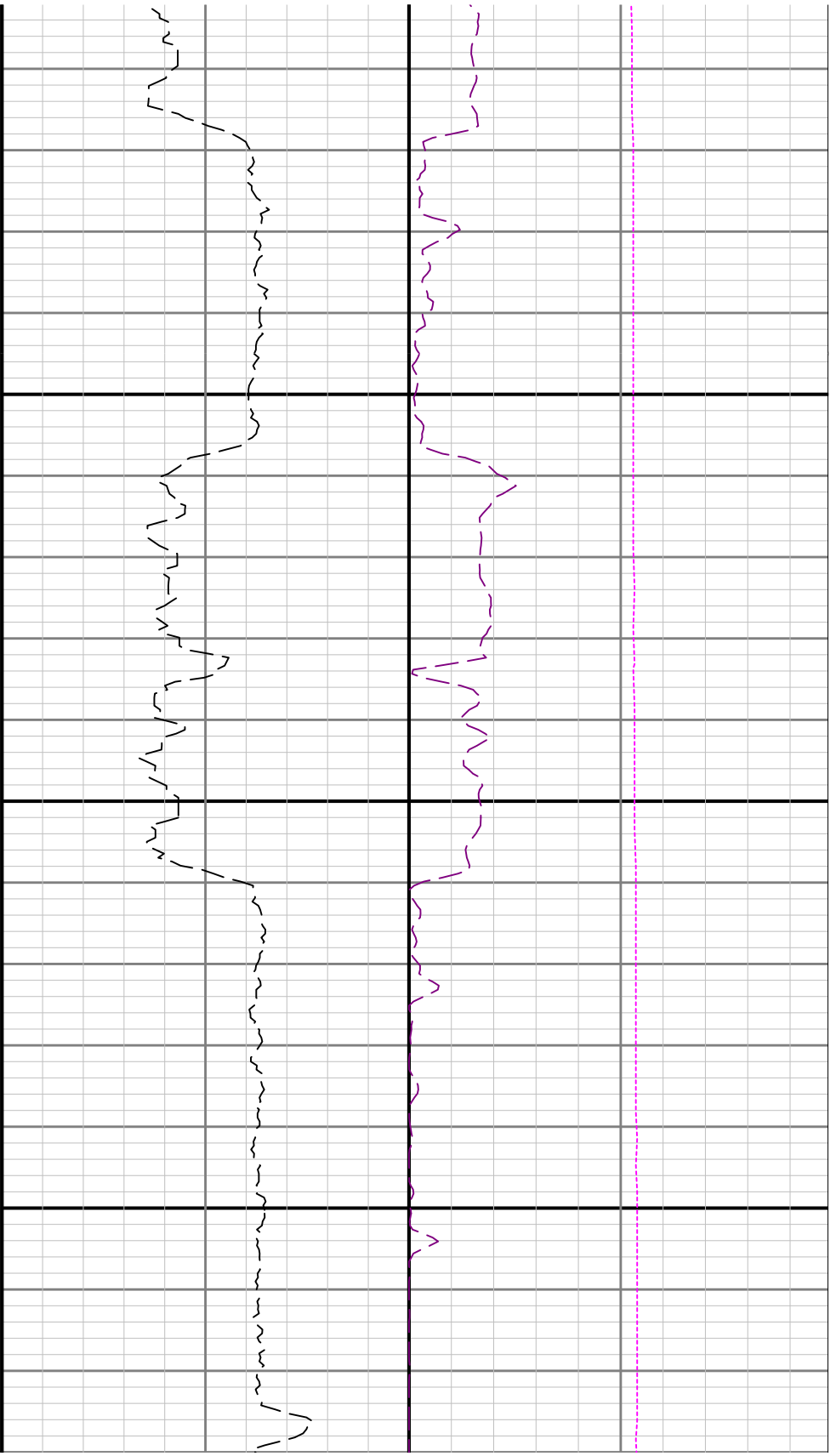
4700





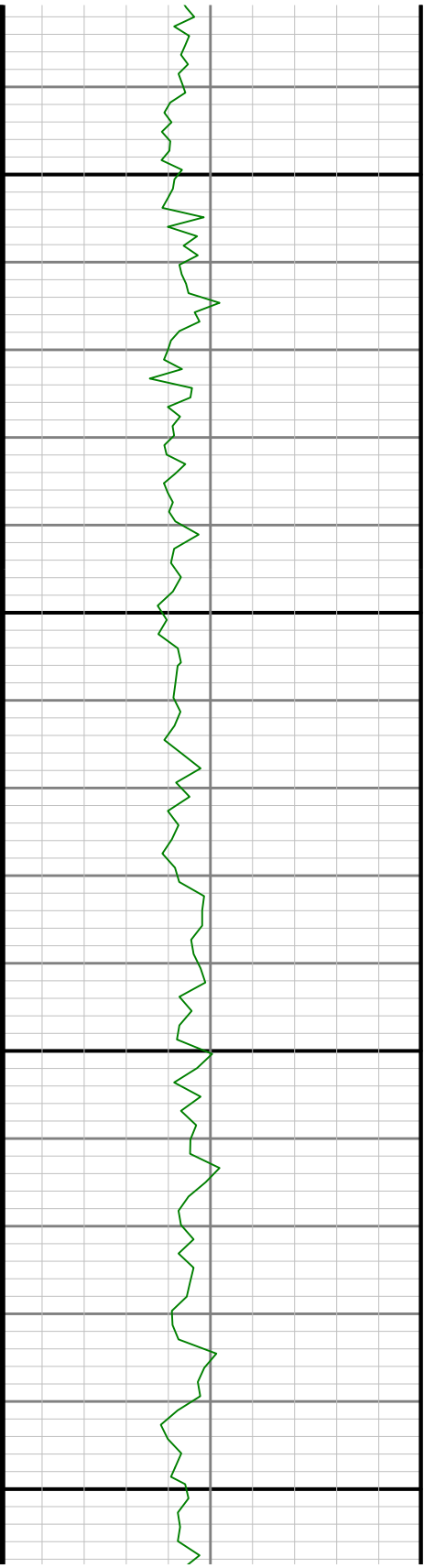






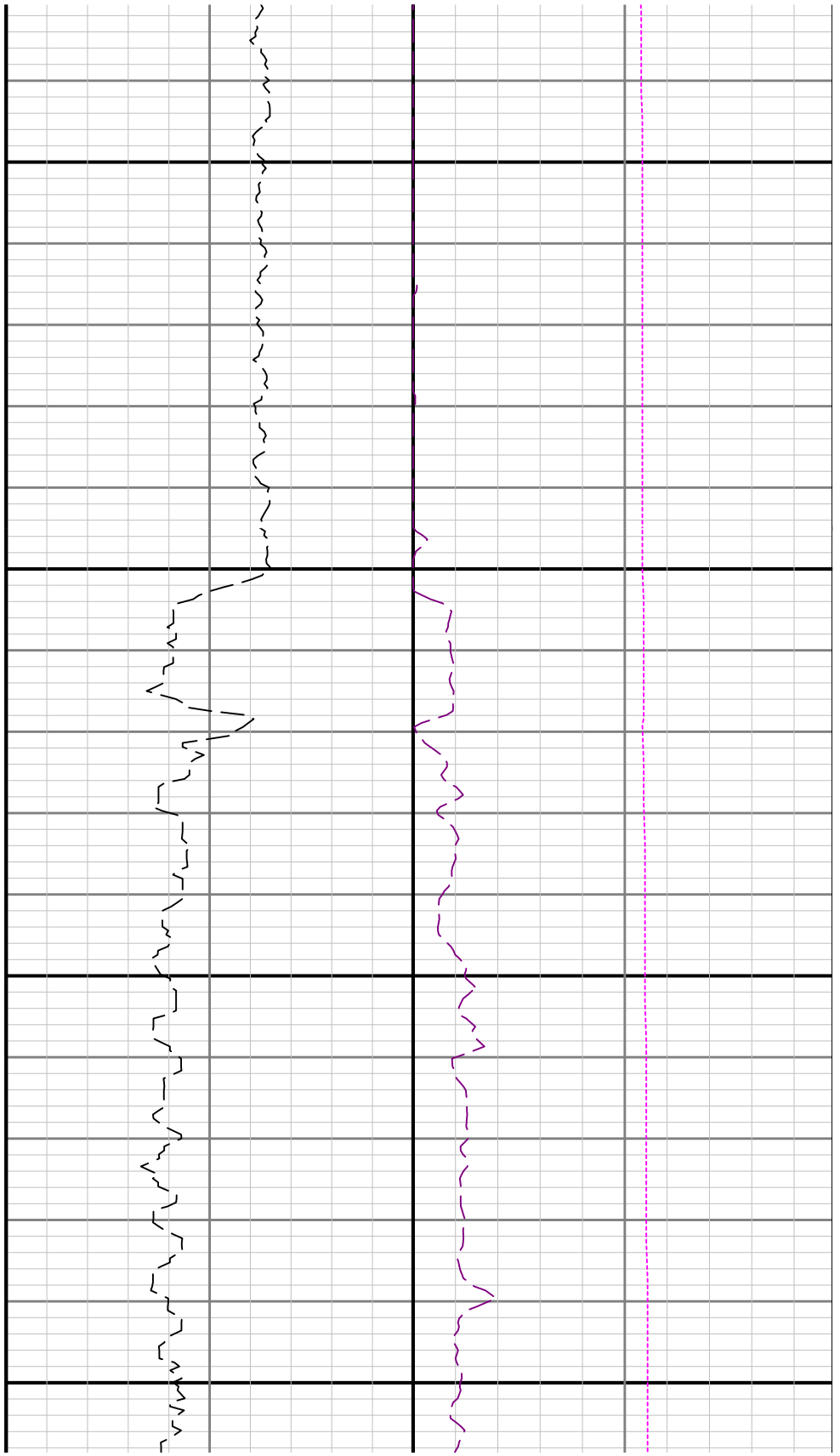
5400

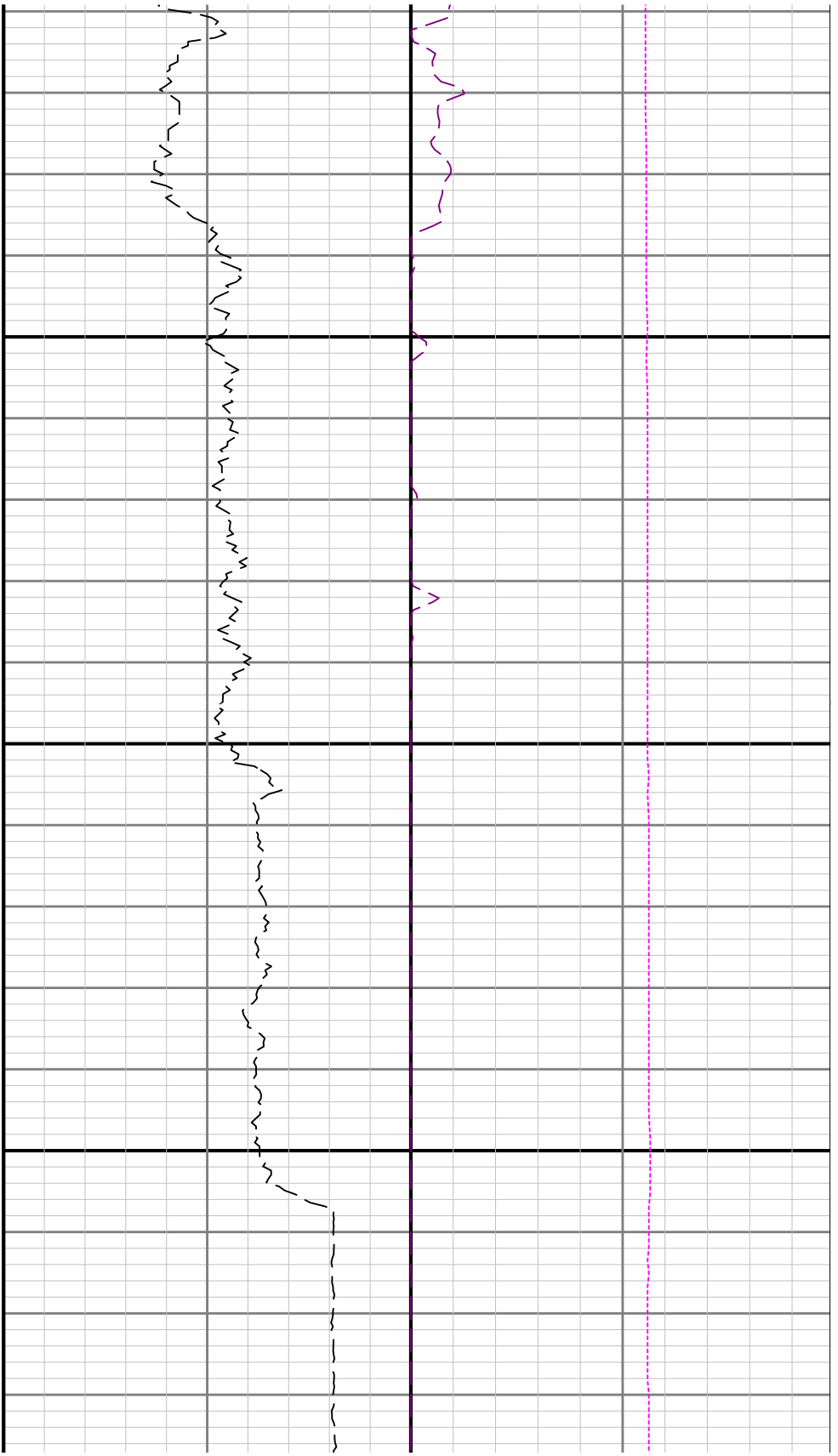


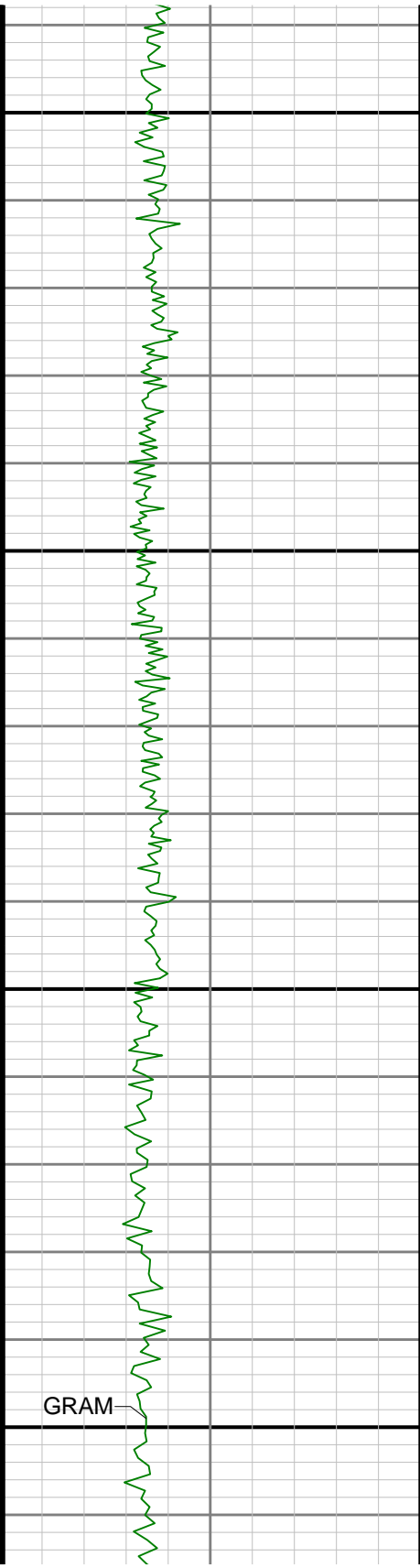


5500

5600

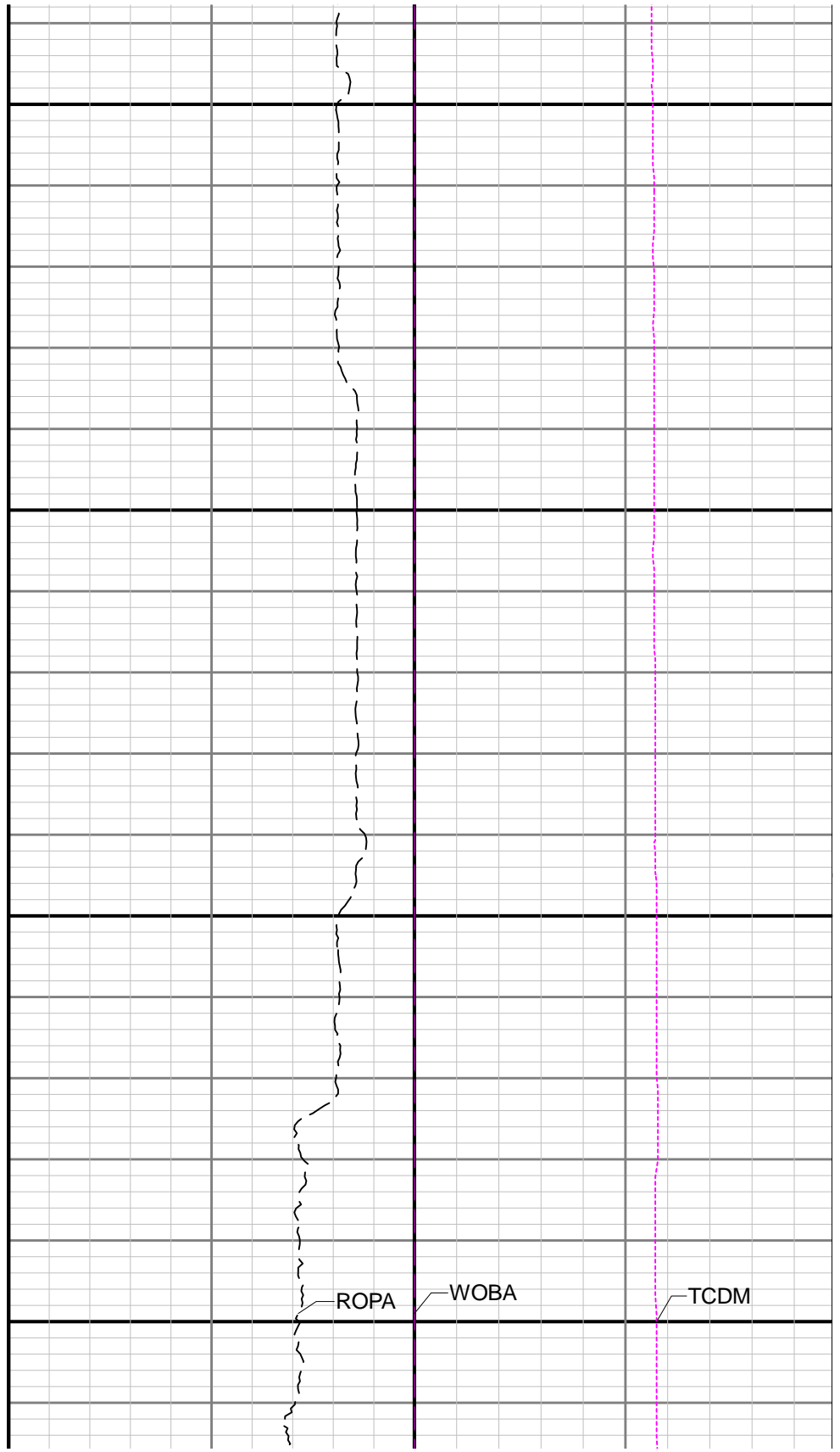






5900

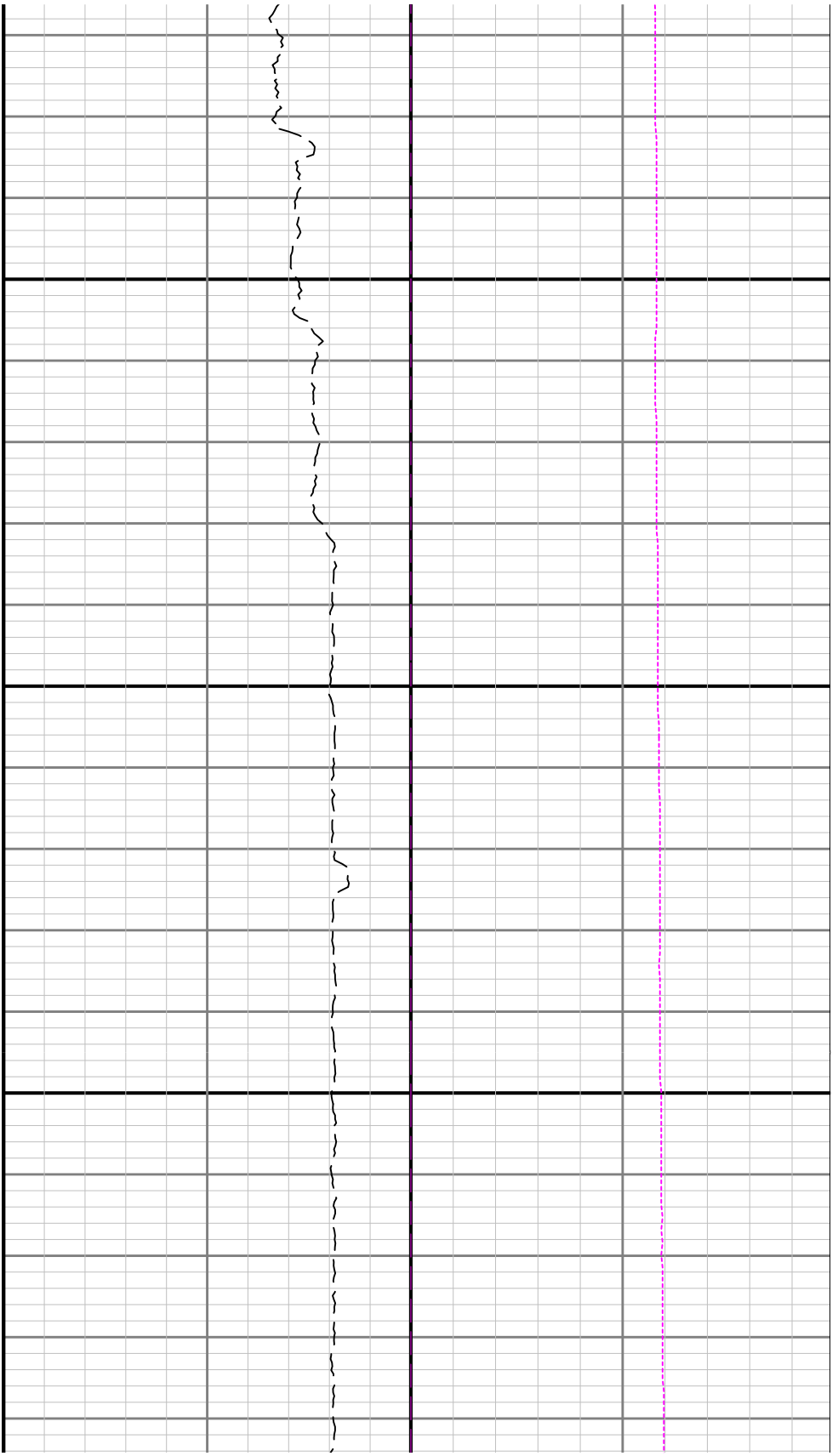
6000



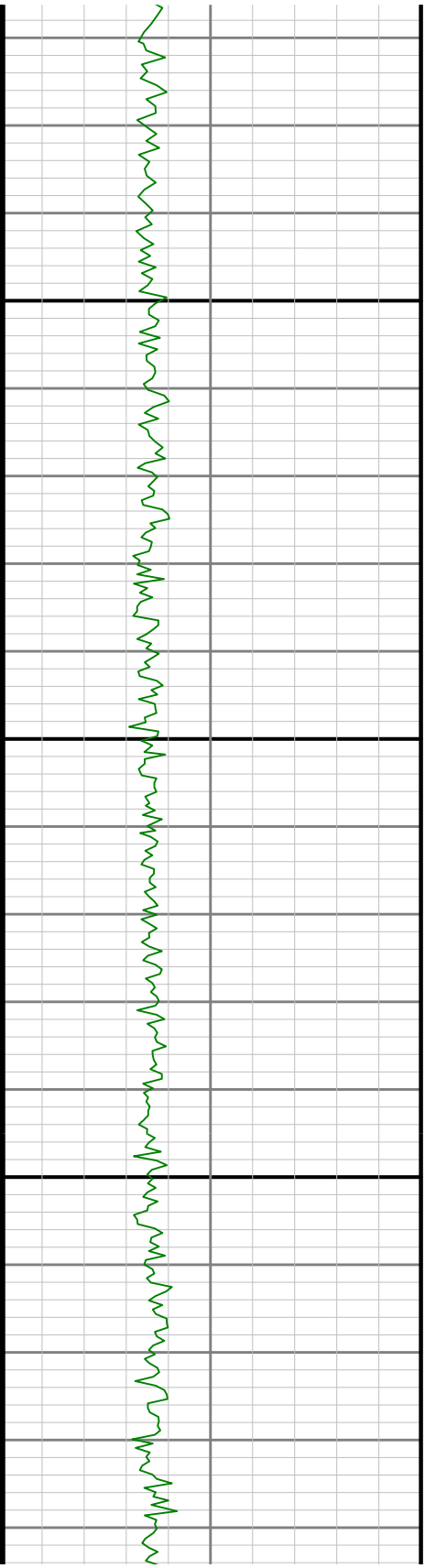
ROPA

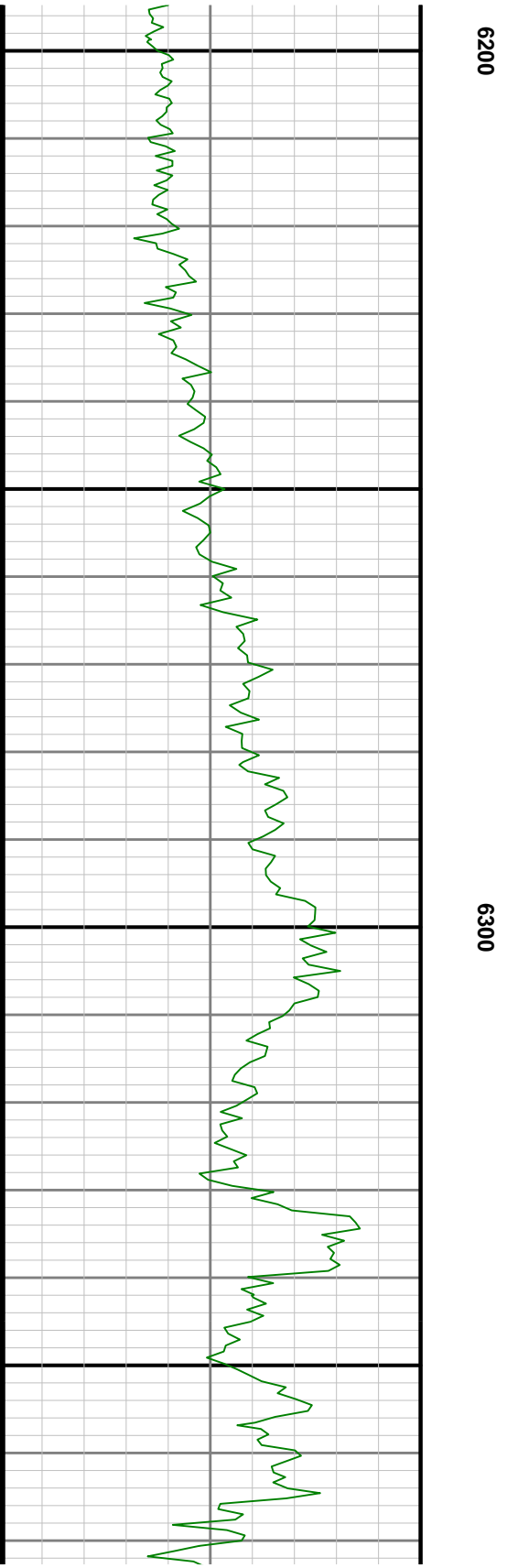
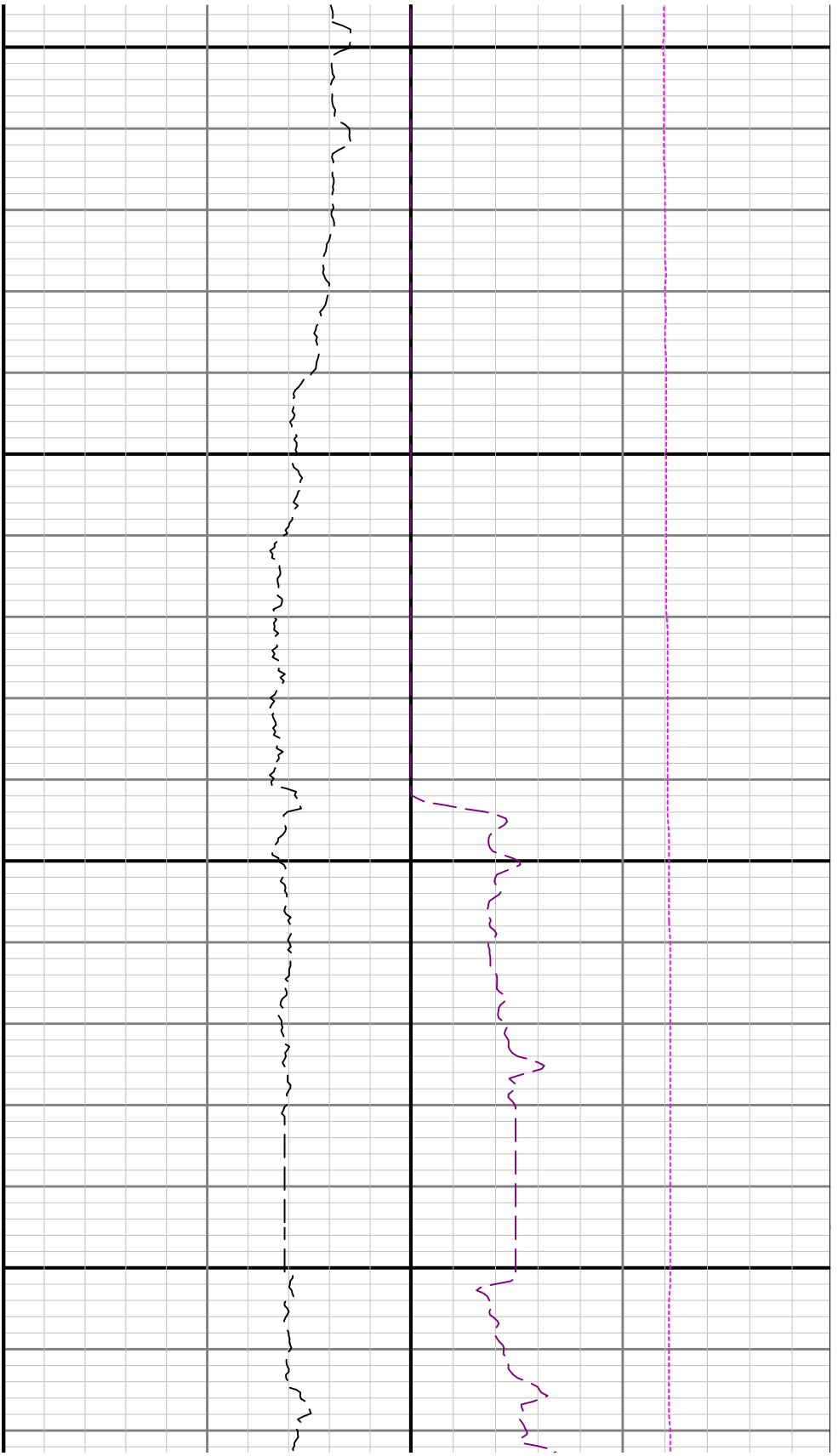
WOBA

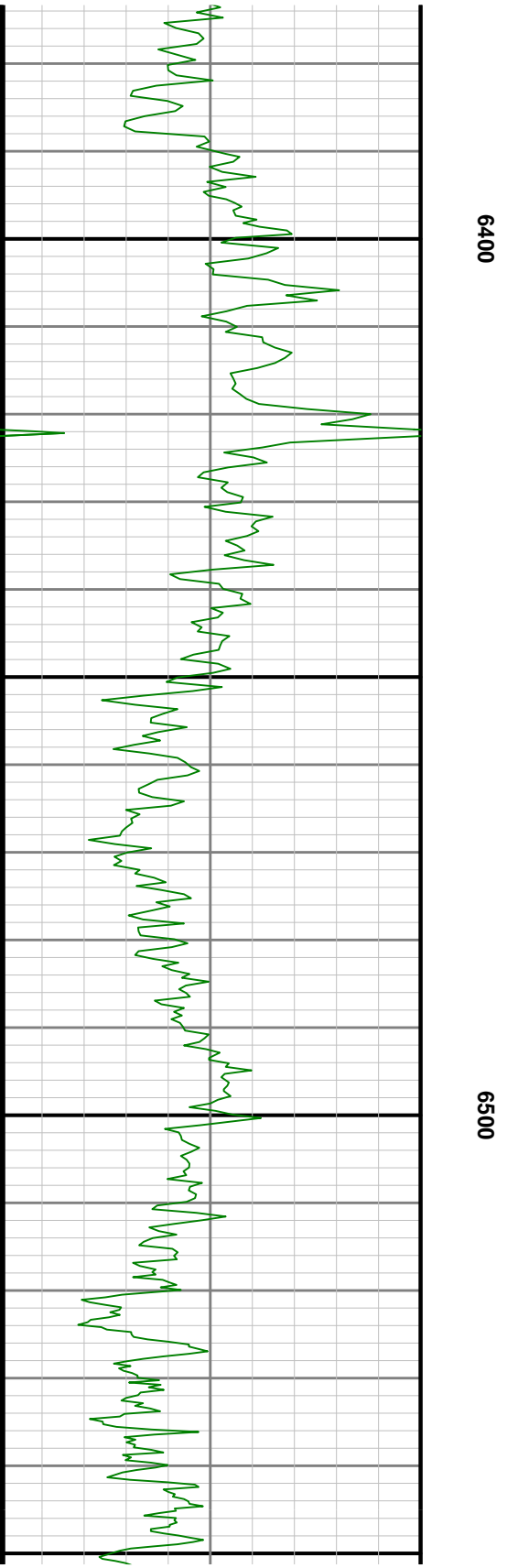
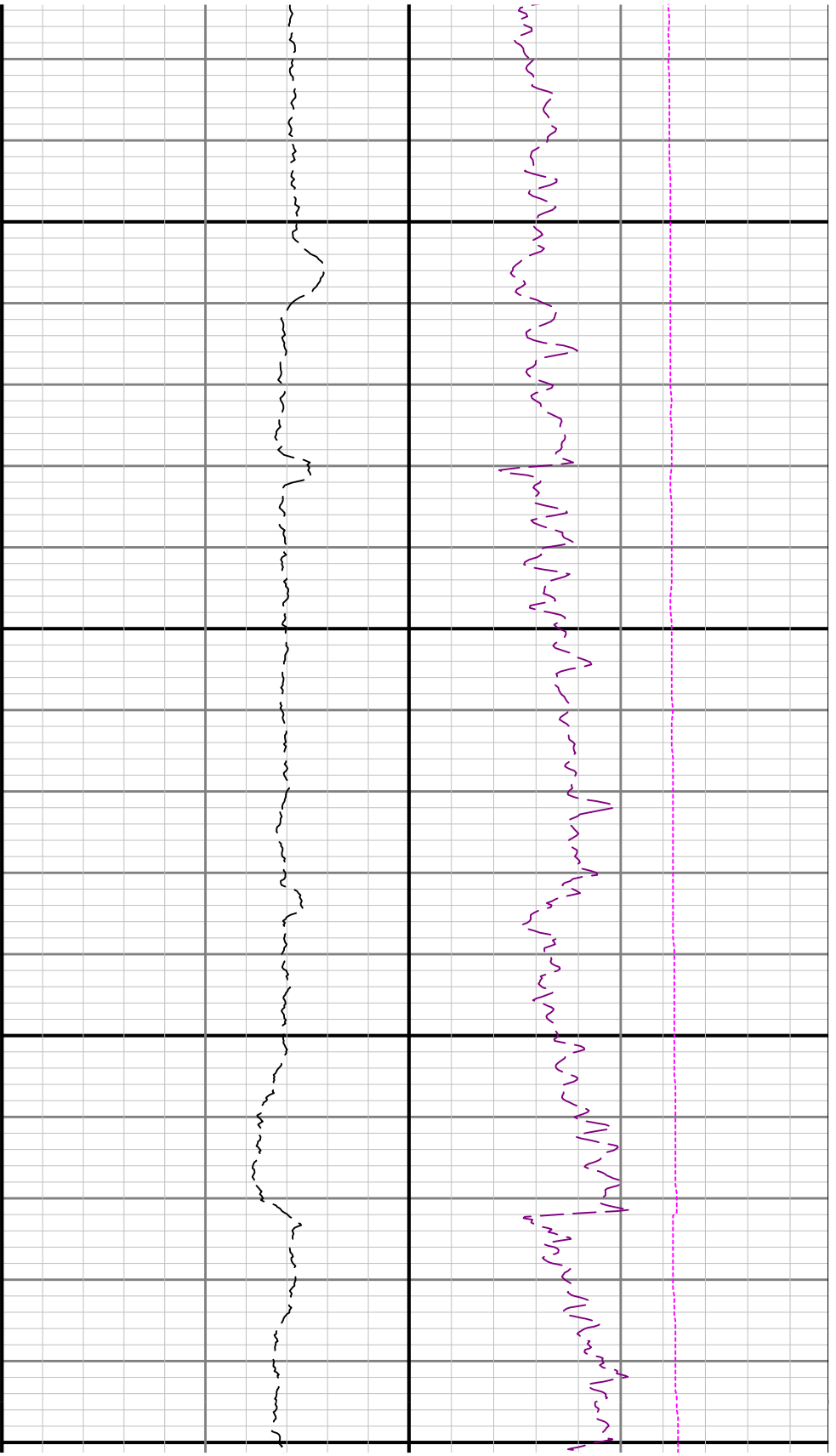
TCDM

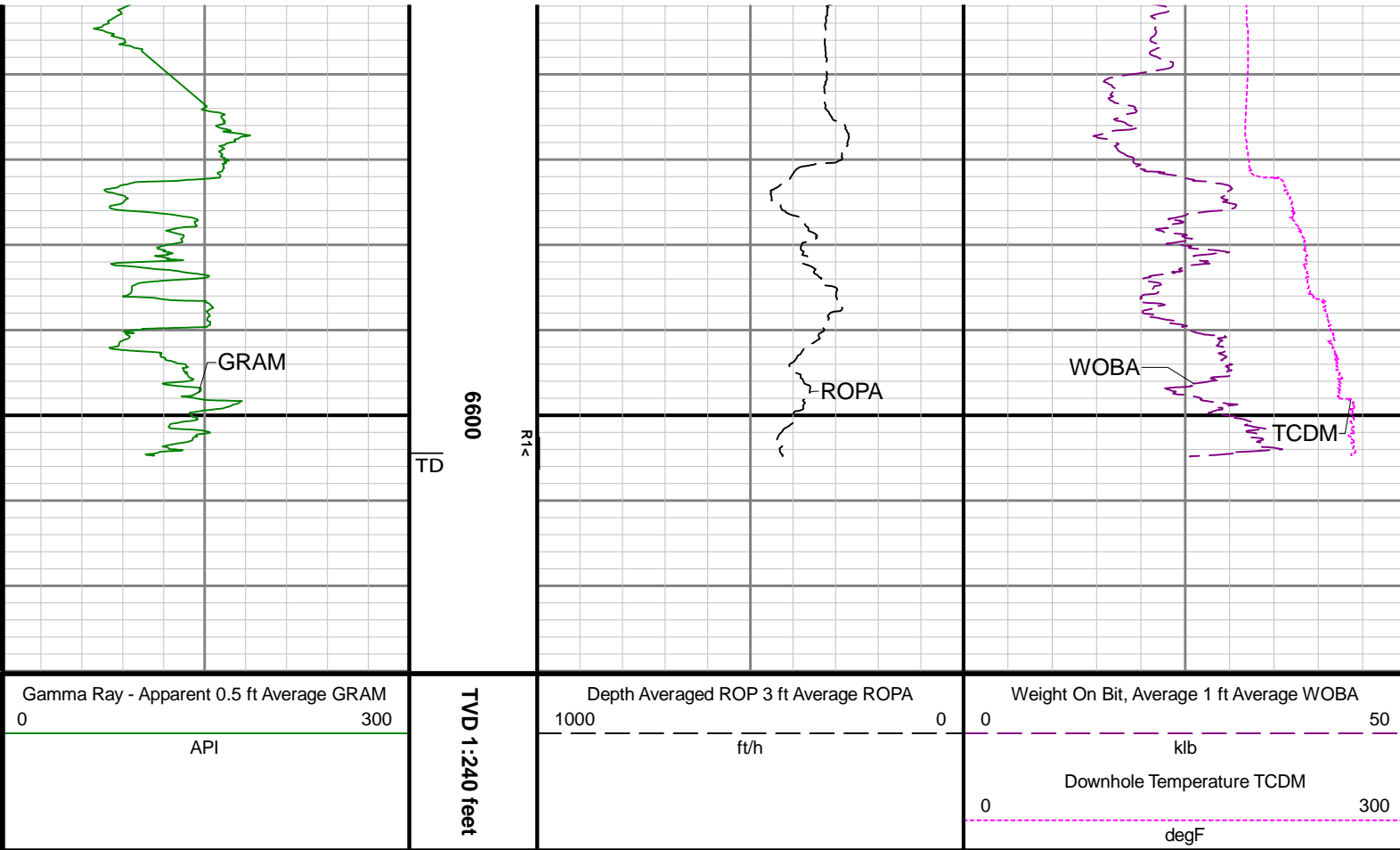


6100









Directional Survey Summary

Latitude:	040° 24' 33.336" N	Longitude:	104° 24' 44.748" W
North Reference:	Grid	Drill Depth Zero:	Rig Floor
Vertical Datum is:	Ground Level	Vertical Datum to DDZ: (ft)	30.00
Vertical Section North: (ft)	0.00	Vertical Section East: (ft)	0.00
Vertical Section Azimuth: (deg)	268.58		
Grid Convergence: (deg)	-0.70	Magnetic Declination: (deg)	7.90
Total Correction: (deg)	7.20	TVD Calculation Method:	Minimum Curvature
Magnetic Correction:	Off	Local Magnetic Field: (nT)	52199
Local Magnetic Dip Angle: (deg)	67.02	Local Gravity Field: (m/s2)	9.801

Tie-In / Projection	Measured Depth (ft)	Inclination (deg)	Azimuth (deg)	Temperature (degF)	North (ft)	East (ft)	True Vertical Depth (ft)	TVD Subsea (ft)	Vertical Section (ft)	Course Length (ft)	Dog Leg Severity (deg/100ft)	Build Rate (deg/100ft)	Turn Rate (deg/100ft)
Tie-In	0.00	0.00	0.00	N/A	0.00	0.00	0.00	-4706.00	0.00	0.00	0.00	0.00	0.00
	76.00	0.28	335.61	N/A	0.17	-0.08	76.00	-4630.00	0.07	76.00	0.37	0.37	-32.09
	175.00	0.06	355.75	N/A	0.44	-0.18	175.00	-4531.00	0.17	99.00	0.23	-0.22	20.34
	266.00	0.36	4.16	N/A	0.77	-0.16	266.00	-4440.00	0.14	91.00	0.33	0.33	9.24
	361.00	0.30	11.96	N/A	1.31	-0.09	361.00	-4345.00	0.06	95.00	0.08	-0.06	8.21
	456.00	0.25	31.42	N/A	1.73	0.07	456.00	-4250.00	-0.11	95.00	0.11	-0.05	20.48
	550.00	0.32	297.62	N/A	2.03	-0.06	550.00	-4156.00	0.01	94.00	0.45	0.07	-99.79
	645.00	0.44	321.80	N/A	2.44	-0.52	644.99	-4061.01	0.46	95.00	0.21	0.13	25.45
	740.00	0.52	303.07	N/A	2.96	-1.10	739.99	-3966.01	1.03	95.00	0.18	0.08	-19.72
	834.00	0.64	355.17	N/A	3.72	-1.51	833.99	-3872.01	1.41	94.00	0.55	0.13	55.43
	929.00	0.48	353.79	N/A	4.64	-1.59	928.98	-3777.02	1.48	95.00	0.17	-0.17	-1.45
	1024.00	0.58	10.40	N/A	5.40	-1.48	1023.98	-3682.03	1.34	95.00	0.37	0.44	26.06

		1024.00	0.58	19.40	N/A	5.49	-1.48	1023.98	-3682.02	1.34	95.00	0.27	0.11	26.96
		1118.00	0.62	1.84	N/A	6.45	-1.30	1117.97	-3588.03	1.14	94.00	0.20	0.04	-18.68
		1213.00	0.24	7.41	N/A	7.16	-1.26	1212.97	-3493.03	1.08	95.00	0.40	-0.40	5.86
		1307.00	0.25	312.01	N/A	7.49	-1.39	1306.97	-3399.03	1.20	94.00	0.24	0.01	-58.94
		1401.00	0.09	291.87	N/A	7.66	-1.61	1400.97	-3305.03	1.42	94.00	0.18	-0.17	-21.43
		1496.00	0.26	312.34	N/A	7.83	-1.84	1495.97	-3210.03	1.64	95.00	0.19	0.18	21.55
		1590.00	0.28	287.79	N/A	8.04	-2.21	1589.97	-3116.03	2.01	94.00	0.12	0.02	-26.12
		1685.00	0.75	267.37	N/A	8.09	-3.05	1684.96	-3021.04	2.85	95.00	0.52	0.49	-21.49
		1779.00	1.19	279.79	N/A	8.22	-4.63	1778.95	-2927.05	4.43	94.00	0.52	0.47	13.21
		1874.00	0.88	322.81	N/A	8.97	-6.04	1873.93	-2832.07	5.82	95.00	0.85	-0.33	45.28
		1930.00	0.47	351.29	N/A	9.54	-6.34	1929.93	-2776.07	6.10	56.00	0.92	-0.73	50.86
		1978.00	0.28	134.84	101.4	9.66	-6.29	1977.93	-2728.07	6.04	48.00	1.49	-0.40	299.06
		2073.00	0.07	260.37	104.1	9.48	-6.18	2072.93	-2633.07	5.94	95.00	0.34	-0.22	132.14
		2168.00	0.03	235.19	106.8	9.46	-6.26	2167.93	-2538.07	6.02	95.00	0.05	-0.04	-26.51
		2262.00	0.07	104.64	109.5	9.43	-6.22	2261.93	-2444.07	5.98	94.00	0.10	0.04	-138.88
		2357.00	0.10	49.34	112.2	9.47	-6.10	2356.93	-2349.07	5.86	95.00	0.09	0.03	-58.21
		2451.00	0.03	166.52	114.9	9.50	-6.03	2450.93	-2255.07	5.80	94.00	0.12	-0.07	124.66
		2546.00	0.06	355.32	114.9	9.52	-6.03	2545.93	-2160.07	5.79	95.00	0.09	0.03	-180.21
		2640.00	0.06	90.27	117.6	9.57	-5.99	2639.93	-2066.07	5.75	94.00	0.09	0.00	101.01
		2735.00	0.09	334.45	120.3	9.64	-5.97	2734.93	-1971.07	5.73	95.00	0.13	0.03	-121.92
		2829.00	0.04	90.79	120.3	9.71	-5.97	2828.93	-1877.07	5.73	94.00	0.12	-0.05	123.77
		2924.00	0.06	53.52	123.0	9.73	-5.89	2923.93	-1782.07	5.65	95.00	0.04	0.02	-39.23
		3019.00	0.03	100.80	123.0	9.76	-5.83	3018.93	-1687.07	5.59	95.00	0.05	-0.03	49.77
		3113.00	0.06	177.78	123.0	9.71	-5.80	3112.93	-1593.07	5.56	94.00	0.06	0.03	81.89
		3207.00	0.04	218.23	128.4	9.63	-5.82	3206.93	-1499.07	5.58	94.00	0.04	-0.02	43.03
		3302.00	0.14	13.23	128.4	9.72	-5.82	3301.93	-1404.07	5.57	95.00	0.19	0.11	163.16
		3397.00	0.13	343.06	131.1	9.93	-5.82	3396.93	-1309.07	5.57	95.00	0.07	-0.01	-31.76
		3491.00	0.21	346.78	131.1	10.20	-5.89	3490.93	-1215.07	5.64	94.00	0.09	0.09	3.96
		3586.00	0.03	165.77	133.8	10.35	-5.93	3585.93	-1120.07	5.67	95.00	0.25	-0.19	188.41
		3680.00	0.00	97.20	133.8	10.33	-5.92	3679.93	-1026.07	5.66	94.00	0.03	-0.03	-72.95
		3775.00	0.03	285.11	136.5	10.33	-5.94	3774.93	-931.07	5.69	95.00	0.03	0.03	-181.15
		3869.00	0.12	340.43	136.5	10.43	-6.00	3868.93	-837.07	5.74	94.00	0.11	0.10	58.85
		3963.00	0.00	97.20	136.5	10.52	-6.03	3962.93	-743.07	5.77	94.00	0.13	-0.13	124.22
		4058.00	2.69	66.40	136.5	11.42	-3.99	4057.89	-648.11	3.71	95.00	2.83	2.83	-32.42
		4152.00	5.12	59.39	139.2	14.44	1.64	4151.67	-554.33	-2.00	94.00	2.63	2.59	-7.46
		4247.00	7.13	56.37	141.9	19.86	10.20	4246.12	-459.88	-10.69	95.00	2.14	2.12	-3.18
		4342.00	9.35	63.49	144.6	26.57	22.02	4340.14	-365.86	-22.67	95.00	2.57	2.34	7.49
		4436.00	9.73	68.79	144.6	32.85	36.26	4432.84	-273.16	-37.06	94.00	1.02	0.40	5.64
		4531.00	9.66	78.14	147.3	37.40	51.54	4526.49	-179.51	-52.45	95.00	1.66	-0.07	9.84
		4625.00	11.64	86.19	147.3	39.65	68.72	4618.87	-87.13	-69.68	94.00	2.63	2.11	8.56
		4720.00	11.69	86.90	150.0	40.80	87.90	4711.91	5.91	-88.88	95.00	0.16	0.05	0.75
		4815.00	11.75	86.79	152.7	41.87	107.16	4804.93	98.93	-108.17	95.00	0.07	0.06	-0.12
		4909.00	11.72	85.16	152.7	43.21	126.23	4896.96	190.96	-127.27	94.00	0.35	-0.03	-1.73
		5004.00	11.38	87.85	152.7	44.37	145.21	4990.04	284.04	-146.27	95.00	0.67	-0.36	2.83
		5099.00	9.95	93.74	152.7	44.19	162.77	5083.40	377.40	-163.82	95.00	1.89	-1.51	6.20
		5193.00	11.42	87.25	152.7	44.11	180.17	5175.77	469.77	-181.21	94.00	2.02	1.56	-6.90
		5288.00	11.22	88.28	155.4	44.84	198.80	5268.92	562.92	-199.85	95.00	0.30	-0.21	1.08
		5382.00	10.57	95.89	158.1	44.22	216.52	5361.23	655.23	-217.55	94.00	1.68	-0.69	8.10
		5477.00	10.72	96.51	160.8	42.33	233.97	5454.60	748.60	-234.94	95.00	0.20	0.16	0.65
		5571.00	11.34	94.92	163.5	40.55	251.86	5546.86	840.86	-252.79	94.00	0.73	0.66	-1.69
		5666.00	10.56	93.54	166.2	39.21	269.86	5640.13	934.13	-270.74	95.00	0.87	-0.82	-1.45
		5760.00	10.26	92.46	166.2	38.32	286.82	5732.58	1026.58	-287.68	94.00	0.38	-0.32	-1.15
		5855.00	10.35	85.43	168.9	38.63	303.78	5826.05	1120.05	-304.64	95.00	1.33	0.09	-7.40
		5949.00	5.41	333.77	171.6	43.30	310.26	5919.50	1213.50	-311.24	94.00	14.17	-5.26	-118.79
		6044.00	16.56	307.21	171.6	55.55	297.46	6012.66	1306.66	-298.74	95.00	12.59	11.74	-27.96
		6139.00	18.14	289.10	177.0	68.59	272.68	6103.40	1397.40	-274.30	95.00	5.90	1.66	-19.06
		6233.00	24.61	267.36	179.7	72.48	239.21	6191.02	1485.02	-240.94	94.00	10.78	6.88	-23.13
		6328.00	33.21	262.82	182.5	68.31	193.55	6274.12	1568.12	-195.18	95.00	9.34	9.05	-4.78
		6422.00	41.06	266.91	182.5	63.42	137.09	6349.01	1643.01	-138.62	94.00	8.75	8.35	4.35
		6517.00	49.39	264.16	185.2	58.06	69.93	6415.86	1709.86	-71.35	95.00	9.00	8.77	-2.89

	6611.00	58.00	259.34	185.2	47.03	-4.90	6471.49	1765.49	3.74	94.00	10.04	9.16	-5.13
	6706.00	68.60	262.24	187.9	33.57	-88.56	6514.12	1808.12	87.70	95.00	11.48	11.16	3.05
	6800.00	73.88	266.35	190.6	24.78	-177.08	6544.35	1838.35	176.41	94.00	6.98	5.62	4.37
	6895.00	81.99	268.90	190.6	20.96	-269.82	6564.20	1858.20	269.21	95.00	8.93	8.54	2.68
	6989.00	89.66	272.02	193.3	21.73	-363.48	6571.04	1865.04	362.83	94.00	8.80	8.16	3.32
	7084.00	89.66	271.77	193.3	24.87	-458.43	6571.60	1865.60	457.67	95.00	0.26	0.00	-0.26
	7178.00	90.00	270.25	196.0	26.52	-552.41	6571.88	1865.88	551.58	94.00	1.66	0.36	-1.62
	7273.00	89.91	268.65	198.7	25.61	-647.40	6571.95	1865.95	646.57	95.00	1.69	-0.09	-1.68
	7367.00	89.94	266.56	201.4	21.68	-741.31	6572.08	1866.08	740.55	94.00	2.22	0.03	-2.22
	7462.00	90.03	265.93	201.4	15.46	-836.11	6572.10	1866.10	835.47	95.00	0.67	0.09	-0.66
	7556.00	90.09	266.68	204.1	9.41	-929.91	6572.00	1866.00	929.40	94.00	0.80	0.06	0.80
	7650.00	90.06	266.78	206.8	4.04	-1023.76	6571.88	1865.88	1023.35	94.00	0.11	-0.03	0.11
	7745.00	90.06	266.67	206.8	-1.38	-1118.61	6571.78	1865.78	1118.30	95.00	0.12	0.00	-0.12
	7839.00	89.97	266.88	209.5	-6.67	-1212.46	6571.76	1865.76	1212.25	94.00	0.24	-0.10	0.22
	7933.00	89.97	267.21	209.5	-11.52	-1306.33	6571.81	1865.81	1306.22	94.00	0.35	0.00	0.35
	8028.00	89.91	266.57	212.2	-16.67	-1401.19	6571.91	1865.91	1401.17	95.00	0.68	-0.06	-0.67
	8123.00	89.85	267.14	212.2	-21.88	-1496.05	6572.10	1866.10	1496.13	95.00	0.60	-0.06	0.60
	8217.00	89.94	268.67	212.2	-25.32	-1589.98	6572.28	1866.28	1590.12	94.00	1.63	0.10	1.63
	8311.00	89.91	267.73	214.9	-28.27	-1683.93	6572.40	1866.40	1684.12	94.00	1.00	-0.03	-1.00
	8406.00	89.69	268.97	214.9	-31.01	-1778.89	6572.73	1866.73	1779.11	95.00	1.33	-0.23	1.31
	8501.00	89.48	268.63	217.6	-33.00	-1873.87	6573.42	1867.42	1874.11	95.00	0.42	-0.22	-0.36
	8595.00	89.85	269.11	217.6	-34.85	-1967.85	6573.97	1867.97	1968.11	94.00	0.64	0.39	0.51
	8690.00	89.69	269.30	220.3	-36.17	-2062.84	6574.35	1868.35	2063.10	95.00	0.26	-0.17	0.20
	8785.00	89.48	269.52	220.3	-37.15	-2157.83	6575.04	1869.04	2158.09	95.00	0.32	-0.22	0.23
	8879.00	89.60	269.82	223.0	-37.69	-2251.83	6575.79	1869.79	2252.07	94.00	0.34	0.13	0.32
	8974.00	89.88	270.64	223.0	-37.31	-2346.82	6576.22	1870.22	2347.03	95.00	0.91	0.29	0.86
	9068.00	89.88	273.36	223.0	-34.03	-2440.76	6576.42	1870.42	2440.85	94.00	2.89	0.00	2.89
	9163.00	89.78	273.47	223.0	-28.37	-2535.59	6576.70	1870.70	2535.51	95.00	0.16	-0.11	0.12
	9257.00	89.63	273.67	223.0	-22.52	-2629.40	6577.19	1871.19	2629.15	94.00	0.27	-0.16	0.21
	9352.00	89.94	273.91	225.7	-16.24	-2724.20	6577.54	1871.54	2723.76	95.00	0.41	0.33	0.25
	9446.00	89.69	272.61	225.7	-10.89	-2818.04	6577.85	1871.85	2817.45	94.00	1.41	-0.27	-1.38
	9541.00	89.97	268.54	228.4	-9.94	-2913.02	6578.13	1872.13	2912.37	95.00	4.29	0.29	-4.28
	9635.00	89.78	265.31	228.4	-14.98	-3006.87	6578.33	1872.33	3006.32	94.00	3.44	-0.20	-3.44
	9730.00	89.66	265.12	228.4	-22.90	-3101.54	6578.80	1872.80	3101.15	95.00	0.24	-0.13	-0.20
	9825.00	89.75	266.90	228.4	-29.51	-3196.30	6579.29	1873.29	3196.05	95.00	1.88	0.09	1.87
	9919.00	89.69	270.78	231.1	-31.42	-3290.26	6579.75	1873.75	3290.03	94.00	4.13	-0.06	4.13
	10014.00	89.57	269.45	231.1	-31.23	-3385.26	6580.36	1874.36	3384.99	95.00	1.41	-0.13	-1.40
	10108.00	89.45	265.66	231.1	-35.23	-3479.15	6581.16	1875.16	3478.96	94.00	4.03	-0.13	-4.03
	10203.00	89.42	263.13	231.1	-44.51	-3573.68	6582.10	1876.10	3573.69	95.00	2.66	-0.03	-2.66
	10298.00	89.91	262.46	231.1	-56.43	-3667.93	6582.66	1876.66	3668.20	95.00	0.87	0.52	-0.71
	10392.00	89.60	265.23	231.1	-66.50	-3761.38	6583.06	1877.06	3761.87	94.00	2.97	-0.33	2.95
	10487.00	89.66	262.45	233.8	-76.70	-3855.82	6583.67	1877.67	3856.54	95.00	2.93	0.06	-2.93
	10582.00	89.69	266.26	231.1	-86.04	-3950.34	6584.21	1878.21	3951.26	95.00	4.01	0.03	4.01
	10676.00	89.51	268.74	233.8	-90.14	-4044.24	6584.87	1878.87	4045.23	94.00	2.65	-0.19	2.64
	10771.00	90.00	270.47	233.8	-90.79	-4139.23	6585.27	1879.27	4140.21	95.00	1.89	0.52	1.82
	10865.00	89.66	273.04	233.8	-87.92	-4233.18	6585.55	1879.55	4234.06	94.00	2.76	-0.36	2.73
	10959.00	90.05	274.50	233.8	-81.74	-4326.98	6585.79	1879.79	4327.67	94.00	1.61	0.41	1.55
	11054.00	90.08	270.56	233.8	-77.54	-4421.86	6585.68	1879.68	4422.43	95.00	4.15	0.03	-4.15
	11148.00	90.17	271.10	236.5	-76.18	-4515.85	6585.48	1879.48	4516.36	94.00	0.58	0.10	0.57
	11243.00	89.98	274.03	233.8	-71.93	-4610.75	6585.35	1879.35	4611.12	95.00	3.09	-0.20	3.08
	11337.00	89.83	269.73	233.8	-68.85	-4704.68	6585.51	1879.51	4704.94	94.00	4.58	-0.16	-4.57
	11432.00	89.95	267.04	236.5	-71.52	-4799.63	6585.69	1879.69	4799.93	95.00	2.83	0.13	-2.83
	11526.00	89.68	261.13	236.5	-81.21	-4893.09	6586.00	1880.00	4893.60	94.00	6.29	-0.29	-6.29
	11621.00	89.95	257.08	236.5	-99.16	-4986.35	6586.30	1880.30	4987.28	95.00	4.27	0.28	-4.26
	11716.00	90.01	264.86	236.5	-114.06	-5080.10	6586.34	1880.34	5081.37	95.00	8.19	0.06	8.19
	11810.00	89.89	263.62	241.9	-123.49	-5173.63	6586.42	1880.42	5175.10	94.00	1.33	-0.13	-1.32
	11905.00	90.20	265.60	241.9	-132.41	-5268.20	6586.34	1880.34	5269.87	95.00	2.11	0.33	2.08
	12000.00	89.89	266.47	241.9	-138.98	-5362.97	6586.27	1880.27	5364.77	95.00	0.97	-0.33	0.92
	12094.00	89.71	268.96	244.6	-142.73	-5456.89	6586.60	1880.60	5458.75	94.00	2.66	-0.19	2.65
	12189.00	89.64	275.56	244.6	-128.00	-5551.76	6587.14	1881.14	5552.50	95.00	6.05	0.07	6.05

	12189.00	89.64	275.56	244.6	-138.99	-5551.76	6587.14	1881.14	5553.50	95.00	6.95	-0.07	6.95
	12283.00	89.64	277.72	244.6	-128.12	-5645.13	6587.73	1881.73	5646.57	94.00	2.30	0.00	2.30
	12378.00	89.49	272.95	247.3	-119.29	-5739.68	6588.45	1882.45	5740.88	95.00	5.02	-0.16	-5.02
	12473.00	89.49	270.00	247.3	-116.84	-5834.64	6589.29	1883.29	5835.74	95.00	3.11	0.00	-3.11
	12568.00	89.74	267.21	247.3	-119.16	-5929.60	6589.93	1883.93	5930.73	95.00	2.95	0.26	-2.94
	12662.00	90.01	268.97	250.0	-122.29	-6023.54	6590.14	1884.14	6024.72	94.00	1.89	0.29	1.87
	12757.00	89.52	270.38	250.0	-122.83	-6118.54	6590.53	1884.53	6119.70	95.00	1.57	-0.52	1.48
	12851.00	89.64	266.27	244.6	-125.57	-6212.48	6591.22	1885.22	6213.68	94.00	4.37	0.13	-4.37
	12945.00	89.77	264.86	250.0	-132.84	-6306.19	6591.70	1885.70	6307.55	94.00	1.51	0.14	-1.50
	13040.00	89.77	264.17	250.0	-141.92	-6400.75	6592.08	1886.08	6402.31	95.00	0.73	0.00	-0.73
	13135.00	89.83	265.98	250.0	-150.08	-6495.40	6592.41	1886.41	6497.12	95.00	1.91	0.06	1.91
	13229.00	89.77	268.07	250.0	-154.96	-6589.27	6592.74	1886.74	6591.08	94.00	2.22	-0.06	2.22
	13324.00	89.83	269.59	250.0	-156.90	-6684.24	6593.07	1887.07	6686.08	95.00	1.60	0.06	1.60
	13418.00	89.80	270.41	252.7	-156.90	-6778.24	6593.38	1887.38	6780.05	94.00	0.87	-0.03	0.87
	13512.00	89.80	270.41	252.7	-156.22	-6872.24	6593.71	1887.71	6874.00	94.00	0.00	0.00	0.00
	13607.00	89.74	270.35	252.7	-155.59	-6967.24	6594.09	1888.09	6968.95	95.00	0.09	-0.06	-0.06
	13701.00	89.74	270.83	252.7	-154.63	-7061.23	6594.51	1888.51	7062.89	94.00	0.51	0.00	0.51
	13796.00	89.58	270.94	252.7	-153.16	-7156.22	6595.08	1889.08	7157.81	95.00	0.20	-0.17	0.12
	13891.00	89.77	272.09	255.4	-150.65	-7251.18	6595.62	1889.62	7252.69	95.00	1.23	0.20	1.21
	13985.00	89.80	274.25	255.4	-145.45	-7345.03	6595.97	1889.97	7346.38	94.00	2.30	0.03	2.30
	14080.00	89.80	274.26	255.4	-138.40	-7439.77	6596.30	1890.30	7440.91	95.00	0.01	0.00	0.01
	14174.00	89.77	272.67	255.4	-132.72	-7533.59	6596.65	1890.65	7534.57	94.00	1.69	-0.03	-1.69
	14269.00	89.77	265.34	252.7	-134.37	-7628.51	6597.04	1891.04	7629.50	95.00	7.72	0.00	-7.72
	14364.00	89.58	256.97	252.7	-148.96	-7722.30	6597.57	1891.57	7723.62	95.00	8.81	-0.20	-8.81
	14458.00	89.92	254.26	252.7	-172.31	-7813.34	6597.99	1891.99	7815.21	94.00	2.91	0.36	-2.88
	14553.00	90.11	262.29	252.7	-191.60	-7906.28	6597.96	1891.96	7908.60	95.00	8.45	0.20	8.45
	14647.00	89.86	268.13	252.7	-199.45	-7999.91	6597.98	1891.98	8002.40	94.00	6.22	-0.27	6.21
	14742.00	90.07	268.43	252.7	-202.30	-8094.87	6598.04	1892.04	8097.40	95.00	0.39	0.22	0.32
	14837.00	89.95	269.51	255.4	-204.01	-8189.85	6598.03	1892.03	8192.39	95.00	1.14	-0.13	1.14
	14931.00	90.07	272.60	255.4	-202.28	-8283.83	6598.01	1892.01	8286.30	94.00	3.29	0.13	3.29
	15026.00	89.92	272.88	255.4	-197.74	-8378.72	6598.02	1892.02	8381.04	95.00	0.33	-0.16	0.29
	15120.00	90.01	270.93	255.4	-194.61	-8472.66	6598.08	1892.08	8474.88	94.00	2.08	0.10	-2.07
	15215.00	90.04	270.78	255.4	-193.19	-8567.65	6598.03	1892.03	8569.81	95.00	0.16	0.03	-0.16
	15309.00	90.04	269.40	255.4	-193.05	-8661.65	6597.97	1891.97	8663.77	94.00	1.47	0.00	-1.47
	15404.00	90.11	266.98	258.1	-196.05	-8756.59	6597.84	1891.84	8758.76	95.00	2.55	0.07	-2.55
	15498.00	90.04	266.72	260.8	-201.21	-8850.45	6597.72	1891.72	8852.72	94.00	0.29	-0.07	-0.28
	15593.00	90.07	266.08	260.8	-207.18	-8945.26	6597.63	1891.63	8947.65	95.00	0.67	0.03	-0.67
	15687.00	89.95	264.25	258.1	-215.10	-9038.92	6597.61	1891.61	9041.48	94.00	1.95	-0.13	-1.95
	15782.00	89.98	264.69	260.8	-224.25	-9133.48	6597.67	1891.67	9136.24	95.00	0.46	0.03	0.46
	15876.00	89.86	263.23	260.8	-234.15	-9226.96	6597.80	1891.80	9229.93	94.00	1.56	-0.13	-1.55
	15971.00	89.77	264.25	260.8	-244.50	-9321.39	6598.11	1892.11	9324.59	95.00	1.08	-0.09	1.07
	16066.00	89.77	265.36	263.5	-253.11	-9416.00	6598.49	1892.49	9419.38	95.00	1.17	0.00	1.17
	16160.00	89.52	265.36	258.1	-260.71	-9509.69	6599.07	1893.07	9513.23	94.00	0.27	-0.27	0.00
	16255.00	89.71	266.05	260.8	-267.82	-9604.42	6599.71	1893.71	9608.11	95.00	0.75	0.20	0.73
	16349.00	89.40	267.48	263.5	-273.13	-9698.26	6600.44	1894.44	9702.05	94.00	1.56	-0.33	1.52
	16539.00	89.67	272.16	263.5	-273.72	-9888.20	6601.98	1895.98	9891.95	190.00	2.47	0.14	2.46
	16728.00	89.67	271.44	263.5	-267.79	-10077.10	6603.07	1897.07	10080.65	189.00	0.38	0.00	-0.38
	16823.00	89.61	271.70	260.8	-265.19	-10172.07	6603.67	1897.67	10175.52	95.00	0.28	-0.06	0.27
	16918.00	89.58	271.22	55.4	-262.77	-10267.03	6604.34	1898.34	10270.39	95.00	0.51	-0.03	-0.51
Projection	16983.00	89.58	271.22	N/A	-261.38	-10332.02	6604.82	1898.82	10335.32	65.00	0.00	0.00	0.00