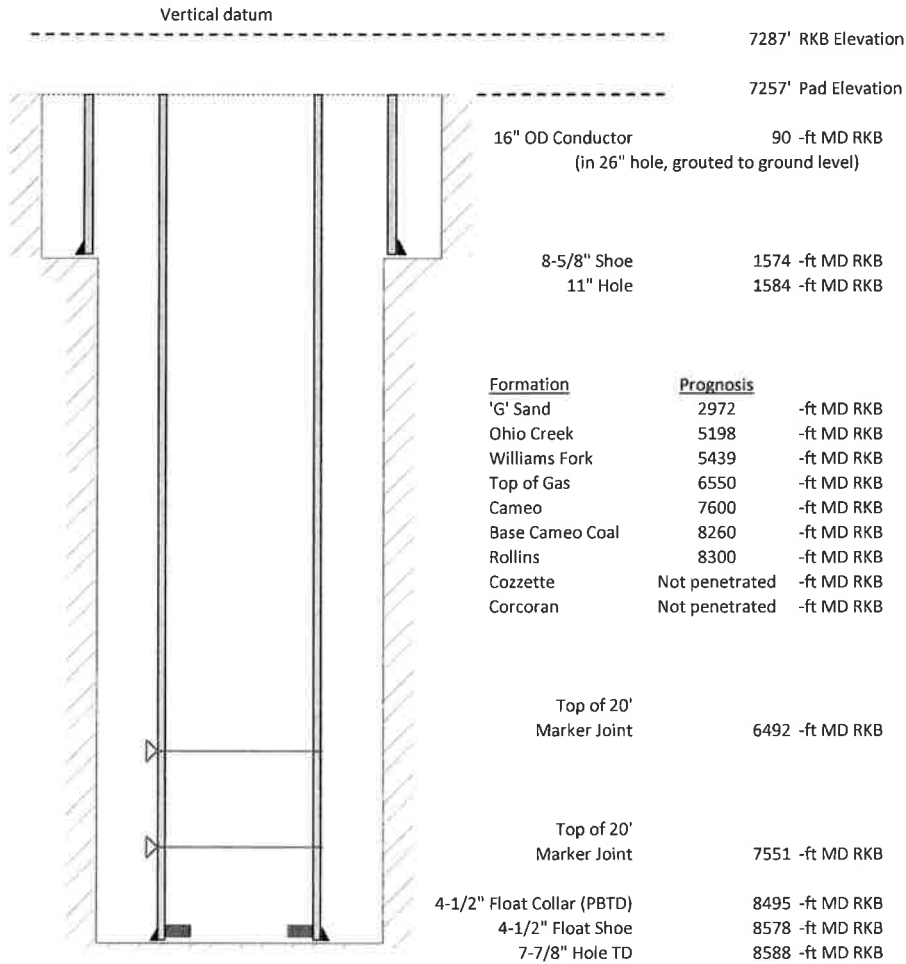


**Laramie Energy, LLC**  
**BCU 0993-21-05E**  
**Slot A-5**  
**H&P 522 (30-ft KB)**

API # : 05-077-10508-00  
 SW/4 NW/4 S13/T9S/R94W/6th PM  
 Mesa County, CO  
 Date of diagram : 10/5/2018



**Cementing details**

8-5/8" 24# Surface Csg	Lead	Tail
Density (ppg)	12.3	12.8
Volume (sx)	172	95
Yield (cf/sx)	2.45	2.18
Top (ft RKB)	30	1050
Bottom (ft RKB)	1050	1574
Returns (full or partial)	full	full

4-1/2" 11.6# Prod Csg	Lead	Tail
Density (ppg)	12.5	13.3
Volume (sx)	765	366
Yield (cf/sx)	1.94	1.73
Est Top (ft RKB)	1030	6530
Est Bottom (ft RKB)	6530	8578
Returns (full or partial)	Full	Full

Displacement
8.3 ppg
131.7 bbls

Other Remarks : Surface-20 bbls cement to surface, No spacer to surface on production job.