



Bonanza Creek Energy

North Platte P41-T44-28HNB

05-123-46920

Production

09/23/2018

Quote #: 17868

Execution #: 11317



Bonanza Creek Energy

Attention: Mr. Adam Conry | (303) 883-3351 | AConry@bonanzacrk.com

Bonanza Creek Energy | 410 17th St Suite 1400 | Denver, CO. 80202

Dear Mr. Conry,

Thank you for the opportunity to provide cementing services on this well. BJ Services strives to achieve complete customer satisfaction. If you have any questions regarding the services or data provided, please contact BJ Services at any time.

Sincerely,
Jason Creel
Field Engineer I | (307) 256-0306 | Jason.Creel@bjservices.com

Field Office
1716 East Allison Rd., Cheyenne WY, 82007
Phone: (307) 638-5585

Sales Office
999 18th St. Suite 1200 Denver, CO 80202
Phone: (281) 408-2361

Cementing Treatment



Start Date	9/22/2018	Well	NORTH PLATTE P41-T44-28HNB
End Date	9/23/2018	API#	05-123-46920
Client	BONANZA CREEK ENERGY	County	WELD
Service Sup.	Wesley Bell	State/Province	CO
District	Cheyenne, WY	Formation	NIOBRARA
Type of Job	Long String		
Execution ID	EXC-11317-T5Y2M202		
Project ID	PRJ1011008		

WELL GEOMETRY

Type	ID (in)	OD (in)	Wt. (lb/ft)	MD (ft)	TVD (ft)	Excess(%)
Previous Casing	8.92	9.63	36.00	1,641.00	1,641.00	
Open Hole	8.50	0.00	0.00	11,602.00	6,300.00	12.50
Casing	4.89	5.50	17.00	11,592.00	6,300.00	

Shoe Length (ft): 44.00

HARDWARE

Bottom Plug Used?	No	Tool Type	Float Collar
Top Plug Used?	Yes	Tool Depth (ft)	11,548.00
Top Plug Provided By	Non BJ	Max Casing Pressure - Rated (psi)	10,640.00
Top Plug Size	5.500	Max Casing Pressure - Operated (psi)	3,300.00
Centralizers Used	Yes	Top Connection Thread	LTC
Centralizers Quantity	95.00	Top Connection Size	5.5
Centralizers Type	Bow		
Landing Collar Depth (ft)	11,548		

Cementing Treatment



CIRCULATION PRIOR TO JOB

Well Circulated By	Rig	Solids Present at End of Circulation	No
Circulation Prior to Job	Yes	10 sec SGS	6.00
Circulation Time (min)	120.00	10 min SGS	8.00
Circulation Rate (bpm)	8.50	30 min SGS	12.00
Circulation Volume (bbls)	1,020.00	Flare Prior to/during the Cement Job	No
Lost Circulation Prior to Cement Job	No	Gas Present	No
Mud Density In (ppg)	9.50		
Mud Density Out (ppg)	9.50		
PV Mud In	10		
PV Mud Out	10		
YP Mud In	6		
YP Mud Out	6		

TEMPERATURE

Ambient Temperature (°F)	75.00	Slurry Cement Temperature (°F)	70.00
Mix Water Temperature (°F)	70.00	Flow Line Temperature (°F)	140.00

BJ FLUID DETAILS

Fluid Type	Fluid Name	Density (ppg)	Yield (Cu Ft/sk)	H2O Req. (gals/sk)	Planned Top of Fluid (Ft)	Length (Ft)	Vol (sk)	Vol (Cu Ft)	Vol (bbls)
Spacer / Pre Flush / Flush	IntegraGuard EZ Spacer	12.0000			0.00				60.0000
Lead Slurry	BJCem P100.3.01C	12.5000	2.1538	12.23	0.00	5000	605	1,307.0000	232.1000
Tail Slurry	BJCem P50.6.02C	13.5000	1.4772	7.45	4,166.00	6589	1155	1,704.0000	304.1000
Displacement 2	Retarded Water	8.3337			13,244.00	0	0	0.0000	20.0000
Displacement Final	Displacement Final (Water)	8.3308			0.00			0.0000	248.5000

Cementing Treatment



Fluid Type	Fluid Name	Component	Concentration	UOM
Spacer / Pre Flush / Flush	IntegraGuard EZ Spacer	SPACER SURFACTANT, SS-267	0.5000	GPB
Spacer / Pre Flush / Flush	IntegraGuard EZ Spacer	EXTENDER, BENTONITE	5.0000	PPB
Spacer / Pre Flush / Flush	IntegraGuard EZ Spacer	GELLANT WATER, GW-86	1.0000	PPB
Spacer / Pre Flush / Flush	IntegraGuard EZ Spacer	SPACER SURFACTANT, SS-247	0.5000	GPB
Spacer / Pre Flush / Flush	IntegraGuard EZ Spacer	SAND, S-8, Silica Flour, 200 Mesh	242.2100	PPB
Lead Slurry	BJCem P100.3.01C	EXTENDER, BENTONITE	4.0000	BWOB
Lead Slurry	BJCem P100.3.01C	FLUID LOSS, FL-24	0.3000	BWOB
Lead Slurry	BJCem P100.3.01C	FOAM PREVENTER, FP-25	0.3000	BWOB
Lead Slurry	BJCem P100.3.01C	BONDING AGENT, BA-60	0.4000	BWOB
Lead Slurry	BJCem P100.3.01C	RETARDER, SR-20	0.4000	BWOB
Lead Slurry	BJCem P100.3.01C	IntegraSeal CELLO	0.1300	LBS/SK
Lead Slurry	BJCem P100.3.01C	CEMENT, ASTM TYPE III	100.0000	PCT
Lead Slurry	BJCem P100.3.01C	GELLANT WATER, GW-86	0.2000	BWOB
Tail Slurry	BJCem P50.6.02C	FLUID LOSS, FL-66	0.2000	BWOB
Tail Slurry	BJCem P50.6.02C	EXTENDER, BENTONITE	2.0000	BWOB
Tail Slurry	BJCem P50.6.02C	FOAM PREVENTER, FP-25	0.3000	BWOB
Tail Slurry	BJCem P50.6.02C	Flyash (Rockies)	50.0000	PCT
Tail Slurry	BJCem P50.6.02C	GELLANT WATER, GW-86	0.1000	BWOB
Tail Slurry	BJCem P50.6.02C	CEMENT, CLASS G	50.0000	PCT
Tail Slurry	BJCem P50.6.02C	RETARDER, SR-20	0.0700	BWOB
Displacement 2	Retarded Water	BIOCIDE, BIOC11139W	0.0100	GPB
Displacement 2	Retarded Water	RETARDER, R-8L	0.5000	GPB
Displacement Final	Displacement Final (Water)	BIOCIDE, BIOC11139W	0.0100	GPB

Cementing Treatment



DISPLACEMENT AND END OF JOB SUMMARY

Displaced By	BJ	Amount of Cement Returned/Reversed	38.00
Calculated Displacement Volume (bbls)	268.00	Method Used to Verify Returns	Visual
Actual Displacement Volume (bbls)	268.00	Amount of Spacer to Surface	60.00
Did Float Hold?	Yes	Pressure Left on Casing (psi)	0.00
Bump Plug	Yes	Amount Bled Back After Job	3.00
Bump Plug Pressure (psi)	3,300.00	Total Volume Pumped (bbls)	864.50
Were Returns Planned at Surface	Yes	Top Out Cement Spotted	No
Cement returns During Job	Full	Lost Circulation During Cement Job	No

EVENT LOG



Customer Name: BONANZA CREEK ENERGY

Well Name: NORTH PLATTE P41-T44-28HNB

Job Type: Long String

Quote ID: QUO-17868-B7Y0G0

Plan ID: ORD-11317-T5Y2M2

District: Cheyenne, WY

Execution ID: EXC-11317-T5Y2M202

BJ Supervisor: Wesley Bell

Fleets:

Seq.	Start Dt./Time	Event	Density (ppg)	Pump Rate (bpm)	Pump Vol(bbls)	Pipe Pressure(psi)	Comments
1	09/22/2018 17:00	Arrive on Location					Arrive on location, requested time was 19:00
2	09/22/2018 17:05	Rig Up					Spot and rig in all BJ equipment
3	09/22/2018 18:00	Customer					Wait for rig to finish running casing and circulating well
4	09/22/2018 23:00	Safety Meeting					Hold STEACS briefing with rig crew and pump crew, review job procedures and job hazards
5	09/22/2018 23:32	Pressure Test	8.3400	2.00	2.00	6,800.00	Pressure test lines, good test, no leaks
6	09/22/2018 23:40	Pump Spacer	12.0000	5.00	60.00	300.00	Pump Spacer, 20bbls at 12ppg, 20bbls at 11.5ppg, 20bbls at 11ppg.
7	09/22/2018 23:56	Pump Lead Cement	12.5000	6.00	231.00	300.00	Pump Lead cement 232.1bbls, 605sks, Y: 2.154, WR: 12.23

EVENT LOG



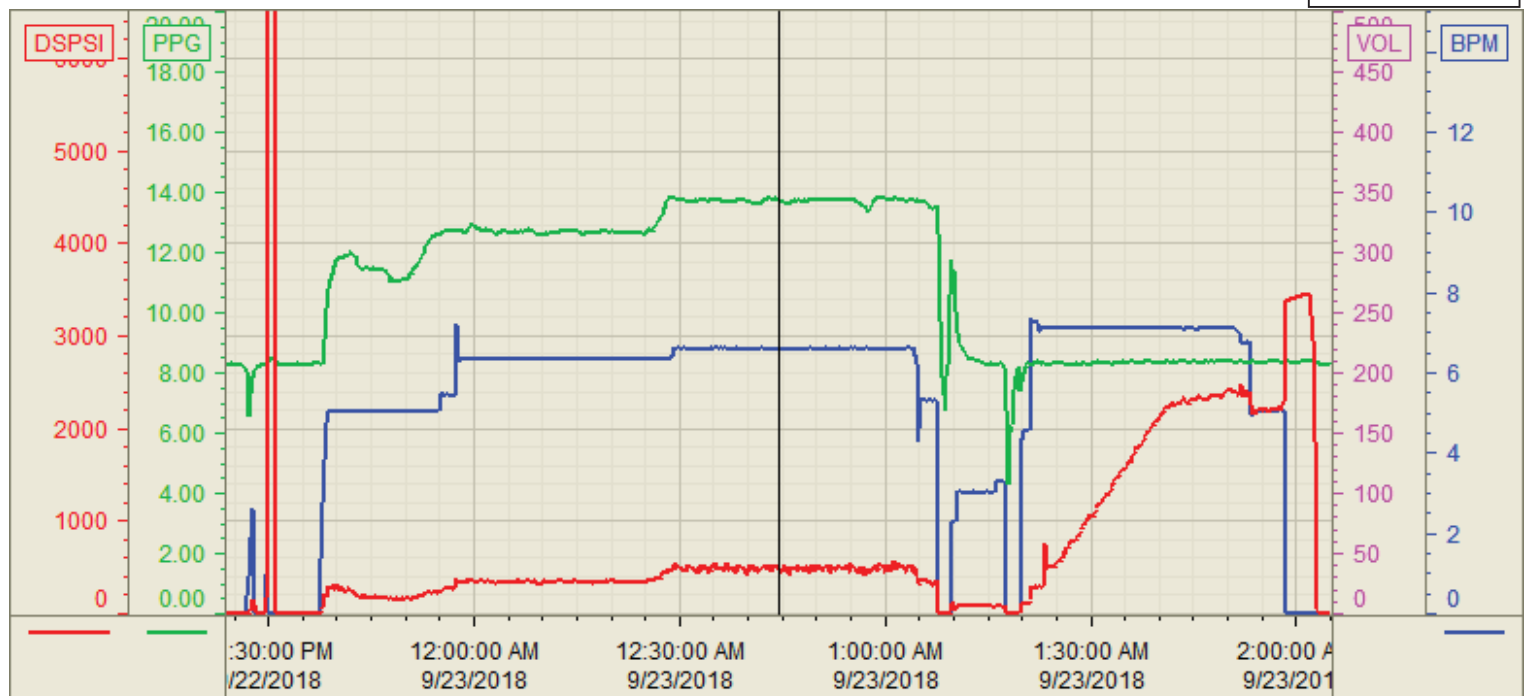
8	09/23/2018 00:29	Pump Tail Cement	13.5000	6.50	304.10	350.00	Pump Tail cement 304.1bbbls, 1155sks, Y: 1.477, WR: 7.45. Top of tail 4166'
9	09/23/2018 01:10	Clean Pumps and Lines	8.3400	0.00	0.00	0.00	Finish mixing, clean pumps and lines, load top plug
10	09/23/2018 01:23	Drop Top Plug	8.3400	5.00	20.00	300.00	Drop top plug, pump 20bbbls fresh water with R-8L
11	09/23/2018 01:29	Pump Displacement	8.3400	7.00	30.00	850.00	50bbbls away on displacement
12	09/23/2018 01:36	Pump Displacement	8.3400	7.00	50.00	1,200.00	100bbbls away on displacement
13	09/23/2018 01:43	Pump Displacement	8.3400	7.00	50.00	2,300.00	150bbbls away on displacement
14	09/23/2018 01:50	Pump Displacement	8.3400	7.00	50.00	2,500.00	200bbbls away on displacement, Spacer to surface at 170 away
15	09/23/2018 01:58	Pump Displacement	8.3400	5.00	50.00	2,300.00	250bbbls away on displacement, Cement to surface at 230away
16	09/23/2018 02:01	Land Plug	8.3400	5.00	18.00	2,300.00	268bbbls away on displacement land plug, bump to 3300
17	09/23/2018 02:04	Check Floats					Floats held, 3bbbls back to truck
18	09/23/2018 02:05	Rig Down					Rig out all BJ equipment
19	09/23/2018 03:00	Leave Location					

Customer:
Well Number:
Lease Info:



Print Date/Time

9/23/2018 3:12:30 AM



	Name	Y value	X value/time stamp	Tag name Y
1	DS - Press(PSI)	485.9	9/23/2018 12:44:27 AM	Cementer\DS_DISCHARGE_PRESS_DIAL
2	DH - Density (PPG)	13.72	9/23/2018 12:44:33 AM	Cementer\DENSITY2_ACTUAL_RATE
3	Combined rate (BPM)	6.61	9/23/2018 12:44:27 AM	Cementer\Flow_Combined
4				
5				

Source: Control1 3:12:24 AM