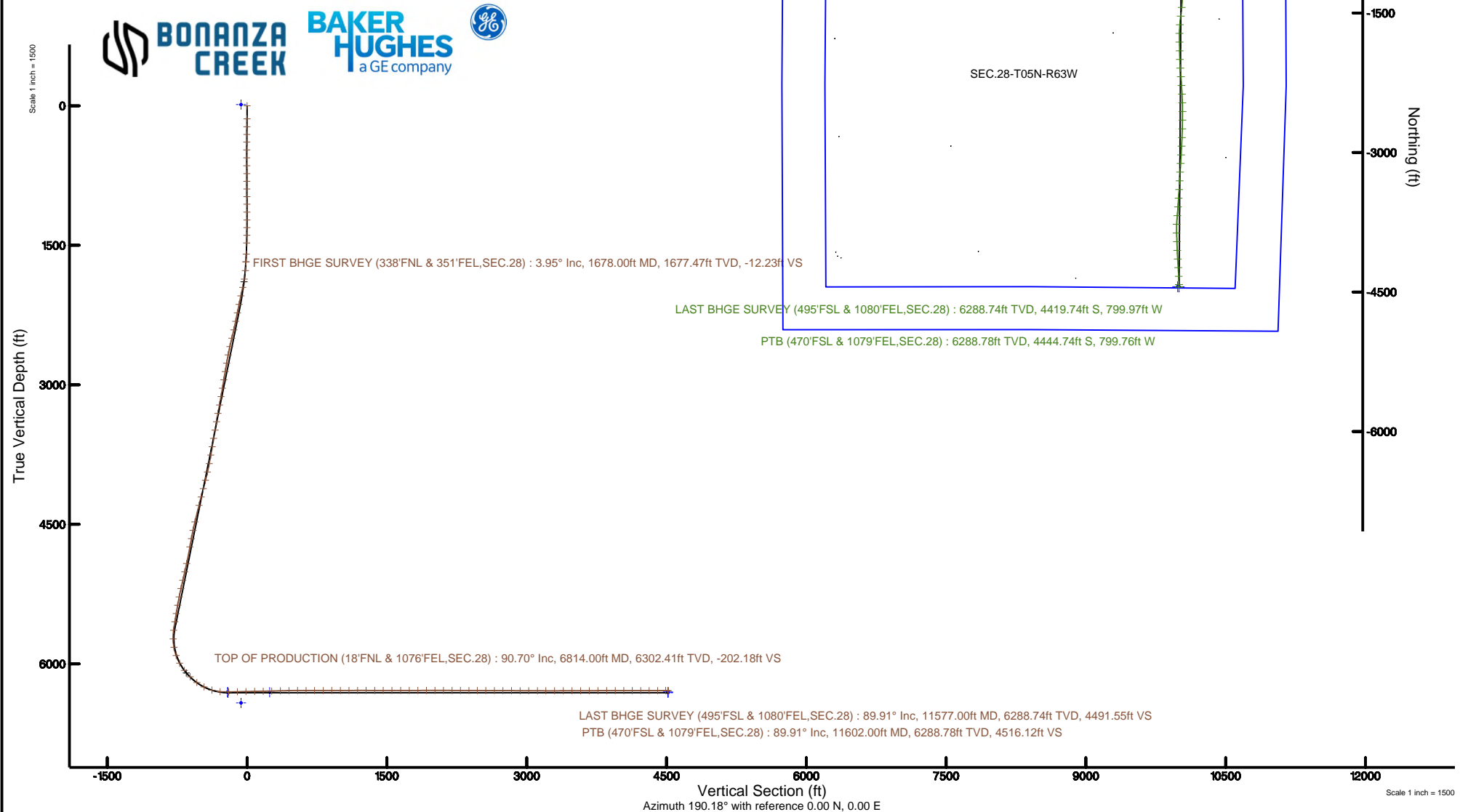


Location:	COLORADO	Slot:	SLOT#07 NORTH PLATTE P41-T44-28HNB (353'FNL & 341'FEL, SEC.28)
Field:	WELD COUNTY	Well:	NORTH PLATTE P41-T44-28HNB
Facility:	SEC.28-T05N-R63W	Wellbore:	NORTH PLATTE P41-T44-28HNB PWB
<b>Plot reference wellpath is NORTH PLATTE P41-T44-28HNB (REV-D.0) PWP</b>		Grid System: NAD83 / Lambert Colorado SP, Northern Zone (501), US feet	
True vertical depths are referenced to RIG (17KB) (RKB)		North Reference: True north	
Measured depths are referenced to RIG (17KB) (RKB)		Scale: True distance	
RIG (17KB) (RKB) to Mean Sea Level: 4565 feet		Depths are in feet	
Mean Sea Level to Ground level (At Slot) SLOT#07 NORTH PLATTE P41-T44-28HNB (353'FNL & 341'FEL, SEC.28): 0 feet		Created by: bushjamm on 2018-12-12	
Coordinates are in feet referenced to Slot		Database: Denver	





# Actual Wellpath Report

NORTH PLATTE P41-T44-28HNB AWP

Page 1 of 8



REFERENCE WELLPATH IDENTIFICATION			
Operator	BONANZA CREEK OIL COMPANY	Slot	SLOT#07 NORTH PLATTE P41-T44-28HNB (353'FNL & 341'FEL, SEC.28)
Area	COLORADO	Well	NORTH PLATTE P41-T44-28HNB
Field	WELD COUNTY	Wellbore	NORTH PLATTE P41-T44-28HNB AWB
Facility	SEC.28-T05N-R63W		

REPORT SETUP INFORMATION			
Projection System	NAD83 / Lambert Colorado SP, Northern Zone (501), US feet	Software System	WellArchitect® 5.1
North Reference	True	User	Bushjamh
Scale	0.999959	Report Generated	12/12/2018 at 8:23:18 AM
Convergence at slot	0.69° East	Database/Source file	Denver/NORTH_PLATTE_P41-T44-28HNB_AWP.xml

WELLPATH LOCATION						
	Local coordinates		Grid coordinates		Geographic coordinates	
	North[ft]	East[ft]	Easting[US ft]	Northing[US ft]	Latitude	Longitude
Slot Location	1410.73	2550.21	3297447.30	1381875.00	40°22'36.239"N	104°25'56.449"W
Facility Reference Pt			3294914.22	1380434.00	40°22'22.300"N	104°26'29.400"W
Field Reference Pt			3224525.77	1254425.87	40°01'44.400"N	104°41'53.556"W

WELLPATH DATUM			
Calculation method	Minimum curvature	RIG (17'KB) (RKB) to Installation Vertical Datum	4565.00ft
Horizontal Reference Pt	Slot	RIG (17'KB) (RKB) to Mean Sea Level	4565.00ft
Vertical Reference Pt	RIG (17'KB) (RKB)	RIG (17'KB) (RKB) to Ground Level at Slot (SLOT#07 NORTH PLATTE P41-T44-28HNB (353'FNL & 341'FEL, SEC.28))	4565.00ft
MD Reference Pt	RIG (17'KB) (RKB)	Section Origin	N 0.00, E 0.00 ft
Field Vertical Reference	Mean Sea Level	Section Azimuth	190.18°



# Actual Wellpath Report

NORTH PLATTE P41-T44-28HNB AWP

Page 2 of 8



## REFERENCE WELLPATH IDENTIFICATION

Operator	BONANZA CREEK OIL COMPANY	Slot	SLOT#07 NORTH PLATTE P41-T44-28HNB (353'FNL & 341'FEL, SEC.28)
Area	COLORADO	Well	NORTH PLATTE P41-T44-28HNB
Field	WELD COUNTY	Wellbore	NORTH PLATTE P41-T44-28HNB AWB
Facility	SEC.28-T05N-R63W		

## WELLPATH DATA (126 stations)

MD [ft]	Inclination [°]	Azimuth [°]	TVD [ft]	Vert Sect [ft]	North [ft]	East [ft]	Latitude	Longitude	DLS [°/100ft]	Comments
0.00	0.000	34.900	0.00	0.00	0.00	0.00	40°22'36.239"N	104°25'56.449"W	0.00	
141.01	0.700	34.900	141.01	-0.78	0.71	0.49	40°22'36.246"N	104°25'56.443"W	0.50	
226.01	0.900	49.900	226.00	-1.77	1.56	1.30	40°22'36.254"N	104°25'56.432"W	0.34	
308.01	0.400	49.300	307.99	-2.48	2.16	2.01	40°22'36.260"N	104°25'56.423"W	0.61	
390.01	0.400	30.400	389.99	-2.98	2.60	2.37	40°22'36.265"N	104°25'56.418"W	0.16	
475.01	0.300	36.500	474.99	-3.45	3.03	2.65	40°22'36.269"N	104°25'56.415"W	0.13	
559.01	0.100	137.700	558.99	-3.61	3.15	2.83	40°22'36.270"N	104°25'56.412"W	0.40	
645.01	0.300	213.300	644.99	-3.35	2.91	2.76	40°22'36.268"N	104°25'56.413"W	0.34	
730.01	0.600	240.600	729.99	-2.86	2.51	2.25	40°22'36.264"N	104°25'56.420"W	0.42	
812.01	0.100	137.700	811.98	-2.55	2.24	1.93	40°22'36.261"N	104°25'56.424"W	0.77	
895.01	0.200	210.200	894.98	-2.37	2.06	1.90	40°22'36.259"N	104°25'56.424"W	0.23	
977.01	0.300	210.700	976.98	-2.03	1.76	1.72	40°22'36.256"N	104°25'56.427"W	0.12	
1059.01	0.100	107.000	1058.98	-1.82	1.55	1.68	40°22'36.254"N	104°25'56.427"W	0.41	
1144.01	0.100	119.500	1143.98	-1.79	1.49	1.81	40°22'36.254"N	104°25'56.426"W	0.03	
1228.01	0.200	192.300	1227.98	-1.62	1.31	1.85	40°22'36.252"N	104°25'56.425"W	0.23	
1310.01	0.500	338.600	1309.98	-1.78	1.51	1.69	40°22'36.254"N	104°25'56.427"W	0.82	
1393.01	1.700	320.100	1392.96	-2.88	2.79	0.76	40°22'36.267"N	104°25'56.439"W	1.49	
1475.01	2.600	313.700	1474.91	-4.69	5.01	-1.36	40°22'36.288"N	104°25'56.467"W	1.13	
1595.01	4.200	315.800	1594.69	-8.75	10.04	-6.39	40°22'36.338"N	104°25'56.532"W	1.34	
1678.00	3.950	317.010	1677.47	-12.23	14.31	-10.46	40°22'36.380"N	104°25'56.584"W	0.32	FIRST BHGE SURVEY (338'FNL & 351'FEL, SEC.28)
1773.00	8.010	320.850	1771.94	-18.51	21.84	-16.87	40°22'36.455"N	104°25'56.667"W	4.29	
1866.00	11.840	329.720	1863.53	-30.00	35.11	-25.78	40°22'36.586"N	104°25'56.782"W	4.42	
1958.00	14.660	336.550	1953.08	-46.88	53.94	-35.17	40°22'36.772"N	104°25'56.903"W	3.50	
2052.00	14.560	336.290	2044.04	-66.59	75.67	-44.66	40°22'36.987"N	104°25'57.026"W	0.13	
2146.00	14.600	334.220	2135.01	-85.99	97.16	-54.56	40°22'37.199"N	104°25'57.154"W	0.56	
2241.00	14.800	327.040	2226.91	-104.54	118.12	-66.37	40°22'37.406"N	104°25'57.307"W	1.93	
2335.00	15.300	329.020	2317.69	-122.64	138.83	-79.29	40°22'37.611"N	104°25'57.473"W	0.76	
2430.00	15.890	334.780	2409.19	-142.68	161.34	-91.28	40°22'37.833"N	104°25'57.628"W	1.74	
2523.00	16.240	335.570	2498.56	-163.76	184.70	-102.08	40°22'38.064"N	104°25'57.768"W	0.44	
2617.00	17.060	328.510	2588.63	-184.88	208.43	-114.72	40°22'38.299"N	104°25'57.931"W	2.32	



# Actual Wellpath Report

NORTH PLATTE P41-T44-28HNB AWP

Page 3 of 8



## REFERENCE WELLPATH IDENTIFICATION

Operator	BONANZA CREEK OIL COMPANY	Slot	SLOT#07 NORTH PLATTE P41-T44-28HNB (353'FNL & 341'FEL, SEC.28)
Area	COLORADO	Well	NORTH PLATTE P41-T44-28HNB
Field	WELD COUNTY	Wellbore	NORTH PLATTE P41-T44-28HNB AWB
Facility	SEC.28-T05N-R63W		

## WELLPATH DATA (126 stations)

MD [ft]	Inclination [°]	Azimuth [°]	TVD [ft]	Vert Sect [ft]	North [ft]	East [ft]	Latitude	Longitude	DLS [°/100ft]	Comments
2710.00	16.830	317.020	2677.62	-203.15	229.92	-131.03	40°22'38.511"N	104°25'58.142"W	3.60	
2803.00	15.710	317.800	2766.89	-218.91	249.09	-148.67	40°22'38.700"N	104°25'58.370"W	1.23	
2898.00	15.800	318.530	2858.32	-234.79	268.31	-165.87	40°22'38.890"N	104°25'58.592"W	0.23	
2990.00	15.610	315.810	2946.89	-249.77	286.57	-182.80	40°22'39.071"N	104°25'58.811"W	0.83	
3084.00	15.770	315.790	3037.39	-264.58	304.80	-200.52	40°22'39.251"N	104°25'59.040"W	0.17	
3177.00	15.560	318.660	3126.93	-279.70	323.22	-217.57	40°22'39.433"N	104°25'59.260"W	0.86	
3270.00	15.770	322.060	3216.48	-295.90	342.55	-233.58	40°22'39.624"N	104°25'59.467"W	1.01	
3364.00	15.760	321.240	3306.95	-312.81	362.58	-249.43	40°22'39.822"N	104°25'59.672"W	0.24	
3458.00	15.680	315.100	3397.44	-328.47	381.54	-266.38	40°22'40.009"N	104°25'59.891"W	1.77	
3551.00	16.570	318.690	3486.78	-343.93	400.40	-284.01	40°22'40.196"N	104°26'00.119"W	1.44	
3644.00	16.460	316.280	3575.94	-359.95	419.88	-301.87	40°22'40.388"N	104°26'00.350"W	0.75	
3738.00	16.340	311.490	3666.12	-374.67	438.27	-320.98	40°22'40.570"N	104°26'00.596"W	1.44	
3832.00	16.410	317.850	3756.32	-389.66	456.87	-339.80	40°22'40.754"N	104°26'00.840"W	1.91	
3926.00	16.300	322.030	3846.52	-406.57	477.12	-356.82	40°22'40.954"N	104°26'01.060"W	1.26	
4020.00	16.530	330.640	3936.70	-425.69	499.18	-371.50	40°22'41.172"N	104°26'01.249"W	2.60	
4113.00	16.260	340.650	4025.94	-447.23	523.00	-382.30	40°22'41.407"N	104°26'01.389"W	3.05	
4207.00	16.300	341.690	4116.17	-470.27	547.94	-390.81	40°22'41.653"N	104°26'01.499"W	0.31	
4300.00	16.300	339.680	4205.43	-492.99	572.57	-399.44	40°22'41.897"N	104°26'01.610"W	0.61	
4394.00	16.230	340.730	4295.67	-515.80	597.34	-408.35	40°22'42.142"N	104°26'01.725"W	0.32	
4580.00	16.350	334.810	4474.21	-559.78	645.57	-428.08	40°22'42.618"N	104°26'01.980"W	0.89	
4674.00	16.480	324.940	4564.40	-579.97	668.46	-441.37	40°22'42.844"N	104°26'02.152"W	2.97	
4767.00	16.820	318.280	4653.51	-597.56	689.30	-457.90	40°22'43.050"N	104°26'02.366"W	2.08	
4860.00	16.720	314.820	4742.56	-613.47	708.77	-476.35	40°22'43.243"N	104°26'02.604"W	1.08	
5047.00	16.670	328.000	4921.74	-648.65	750.50	-509.65	40°22'43.655"N	104°26'03.034"W	2.02	
5140.00	16.740	330.810	5010.81	-668.89	773.50	-523.25	40°22'43.882"N	104°26'03.210"W	0.87	
5234.00	16.930	328.730	5100.79	-689.61	797.02	-536.96	40°22'44.115"N	104°26'03.387"W	0.67	
5328.00	16.830	325.560	5190.74	-709.56	819.94	-551.76	40°22'44.341"N	104°26'03.579"W	0.98	
5421.00	16.930	322.860	5279.73	-728.33	841.84	-567.55	40°22'44.558"N	104°26'03.783"W	0.85	
5514.00	15.810	316.500	5368.97	-745.01	861.82	-584.45	40°22'44.755"N	104°26'04.001"W	2.27	
5608.00	15.770	315.980	5459.42	-760.07	880.30	-602.14	40°22'44.938"N	104°26'04.229"W	0.16	



# Actual Wellpath Report

NORTH PLATTE P41-T44-28HNB AWP

Page 4 of 8



## REFERENCE WELLPATH IDENTIFICATION

Operator	BONANZA CREEK OIL COMPANY	Slot	SLOT#07 NORTH PLATTE P41-T44-28HNB (353'FNL & 341'FEL, SEC.28)
Area	COLORADO	Well	NORTH PLATTE P41-T44-28HNB
Field	WELD COUNTY	Wellbore	NORTH PLATTE P41-T44-28HNB AWB
Facility	SEC.28-T05N-R63W		

## WELLPATH DATA (126 stations) † = interpolated/extrapolated station

MD [ft]	Inclination [°]	Azimuth [°]	TVD [ft]	Vert Sect [ft]	North [ft]	East [ft]	Latitude	Longitude	DLS [°/100ft]	Comments
5700.00	16.030	317.070	5547.90	-775.01	898.59	-619.48	40°22'45.118"N	104°26'04.454"W	0.43	
5795.00	13.810	310.240	5639.70	-788.57	915.52	-637.07	40°22'45.286"N	104°26'04.681"W	2.98	
5889.00	11.470	275.680	5731.54	-793.46	923.70	-654.96	40°22'45.367"N	104°26'04.912"W	8.28	
5982.00	14.590	237.150	5822.30	-784.73	918.25	-674.05	40°22'45.313"N	104°26'05.159"W	9.71	
6075.00	23.140	225.490	5910.26	-761.77	899.05	-696.97	40°22'45.123"N	104°26'05.455"W	10.00	
6168.00	30.480	204.760	5993.38	-723.90	864.70	-719.96	40°22'44.784"N	104°26'05.752"W	12.68	
6261.00	37.770	187.710	6070.50	-672.43	814.87	-733.71	40°22'44.291"N	104°26'05.929"W	12.87	
6354.00	45.850	181.930	6139.78	-610.83	753.18	-738.66	40°22'43.682"N	104°26'05.993"W	9.62	
6449.00	54.020	181.320	6200.88	-539.00	680.57	-740.70	40°22'42.964"N	104°26'06.020"W	8.61	
6541.00	63.850	177.770	6248.30	-461.69	601.88	-739.95	40°22'42.186"N	104°26'06.010"W	11.18	
6634.00	72.910	176.340	6282.54	-377.58	515.63	-735.48	40°22'41.334"N	104°26'05.952"W	9.85	
6726.00	85.660	180.680	6299.61	-289.25	425.47	-733.20	40°22'40.443"N	104°26'05.923"W	14.61	
6814.00†	90.703	183.708	6302.41	-202.18	337.62	-736.57	40°22'39.575"N	104°26'05.966"W	6.68	TOP OF PRODUCTION (18'FNL & 1076'FEL, SEC.28)
6819.00	90.990	183.880	6302.33	-197.21	332.63	-736.90	40°22'39.526"N	104°26'05.971"W	6.68	
6913.00	91.290	183.760	6300.46	-103.81	238.86	-743.17	40°22'38.599"N	104°26'06.051"W	0.34	
7005.00	91.290	183.160	6298.39	-12.46	147.05	-748.72	40°22'37.692"N	104°26'06.123"W	0.65	
7099.00	91.260	181.740	6296.30	80.66	53.16	-752.73	40°22'36.764"N	104°26'06.175"W	1.51	
7193.00	91.110	180.950	6294.35	173.52	-40.79	-754.94	40°22'35.836"N	104°26'06.203"W	0.86	
7286.00	91.140	179.420	6292.53	265.09	-133.77	-755.24	40°22'34.917"N	104°26'06.207"W	1.65	
7379.00	91.570	179.880	6290.33	356.50	-226.74	-754.67	40°22'33.998"N	104°26'06.200"W	0.68	
7473.00	91.080	179.260	6288.16	448.87	-320.71	-753.97	40°22'33.070"N	104°26'06.191"W	0.84	
7567.00	90.000	179.520	6287.27	541.20	-414.70	-752.97	40°22'32.141"N	104°26'06.178"W	1.18	
7660.00	89.880	180.040	6287.37	632.68	-507.70	-752.61	40°22'31.222"N	104°26'06.173"W	0.57	
7753.00	90.280	180.460	6287.24	724.29	-600.70	-753.01	40°22'30.303"N	104°26'06.178"W	0.62	
7847.00	90.120	179.830	6286.91	816.85	-694.70	-753.25	40°22'29.374"N	104°26'06.181"W	0.69	
7940.00	90.250	180.030	6286.61	908.36	-787.70	-753.14	40°22'28.455"N	104°26'06.180"W	0.26	
8034.00	90.000	179.630	6286.40	1000.83	-881.70	-752.86	40°22'27.526"N	104°26'06.176"W	0.50	
8128.00	90.060	180.430	6286.35	1093.36	-975.69	-752.91	40°22'26.597"N	104°26'06.177"W	0.85	
8222.00	90.090	181.680	6286.23	1186.17	-1069.68	-754.64	40°22'25.669"N	104°26'06.199"W	1.33	
8313.00	89.880	181.700	6286.26	1276.18	-1160.64	-757.32	40°22'24.770"N	104°26'06.234"W	0.23	



# Actual Wellpath Report

NORTH PLATTE P41-T44-28HNB AWP

Page 5 of 8



## REFERENCE WELLPATH IDENTIFICATION

Operator	BONANZA CREEK OIL COMPANY	Slot	SLOT#07 NORTH PLATTE P41-T44-28HNB (353'FNL & 341'FEL, SEC.28)
Area	COLORADO	Well	NORTH PLATTE P41-T44-28HNB
Field	WELD COUNTY	Wellbore	NORTH PLATTE P41-T44-28HNB AWB
Facility	SEC.28-T05N-R63W		

## WELLPATH DATA (126 stations)

MD [ft]	Inclination [°]	Azimuth [°]	TVD [ft]	Vert Sect [ft]	North [ft]	East [ft]	Latitude	Longitude	DLS [°/100ft]	Comments
8407.00	89.970	181.980	6286.38	1369.18	-1254.59	-760.34	40°22'23.841"N	104°26'06.273"W	0.31	
8499.00	89.940	182.300	6286.45	1460.28	-1346.52	-763.78	40°22'22.933"N	104°26'06.317"W	0.35	
8593.00	90.060	185.110	6286.45	1553.67	-1440.32	-769.85	40°22'22.006"N	104°26'06.396"W	2.99	
8687.00	89.880	187.680	6286.50	1647.46	-1533.73	-780.32	40°22'21.083"N	104°26'06.531"W	2.74	
8780.00	90.090	184.320	6286.52	1740.20	-1626.20	-790.04	40°22'20.169"N	104°26'06.656"W	3.62	
8873.00	90.120	180.880	6286.35	1832.37	-1719.09	-794.26	40°22'19.251"N	104°26'06.711"W	3.70	
8967.00	90.180	178.370	6286.11	1924.78	-1813.08	-793.64	40°22'18.323"N	104°26'06.703"W	2.67	
9060.00	89.910	179.450	6286.03	2015.98	-1906.07	-791.87	40°22'17.404"N	104°26'06.680"W	1.20	
9153.00	90.000	177.810	6286.11	2107.10	-1999.04	-789.65	40°22'16.485"N	104°26'06.651"W	1.77	
9247.00	89.720	176.570	6286.34	2198.69	-2092.92	-785.04	40°22'15.557"N	104°26'06.592"W	1.35	
9340.00	90.090	175.910	6286.49	2288.95	-2185.72	-778.94	40°22'14.640"N	104°26'06.513"W	0.81	
9434.00	89.660	176.030	6286.70	2380.08	-2279.49	-772.34	40°22'13.714"N	104°26'06.427"W	0.47	
9527.00	89.660	177.310	6287.25	2470.50	-2372.33	-766.93	40°22'12.796"N	104°26'06.358"W	1.38	
9620.00	89.750	178.170	6287.73	2561.32	-2465.25	-763.27	40°22'11.878"N	104°26'06.310"W	0.93	
9714.00	89.940	179.800	6287.98	2653.53	-2559.23	-761.60	40°22'10.949"N	104°26'06.289"W	1.75	
9807.00	89.750	181.030	6288.23	2745.18	-2652.23	-762.28	40°22'10.030"N	104°26'06.297"W	1.34	
9900.00	89.720	181.370	6288.66	2837.04	-2745.21	-764.22	40°22'09.112"N	104°26'06.322"W	0.37	
9994.00	89.660	182.180	6289.17	2930.03	-2839.16	-767.14	40°22'08.183"N	104°26'06.360"W	0.86	
10087.00	89.940	182.990	6289.50	3022.21	-2932.06	-771.33	40°22'07.265"N	104°26'06.414"W	0.92	
10181.00	89.780	183.220	6289.73	3115.50	-3025.92	-776.42	40°22'06.338"N	104°26'06.480"W	0.30	
10272.00	89.690	183.500	6290.15	3205.85	-3116.77	-781.75	40°22'05.440"N	104°26'06.549"W	0.32	
10366.00	90.220	183.180	6290.22	3299.19	-3210.61	-787.23	40°22'04.513"N	104°26'06.619"W	0.66	
10460.00	90.340	182.590	6289.76	3392.42	-3304.49	-791.96	40°22'03.585"N	104°26'06.681"W	0.64	
10554.00	89.880	183.920	6289.58	3485.74	-3398.33	-797.30	40°22'02.658"N	104°26'06.749"W	1.50	
10647.00	90.180	183.810	6289.53	3578.17	-3491.12	-803.57	40°22'01.741"N	104°26'06.830"W	0.34	
10741.00	90.180	183.580	6289.24	3671.57	-3584.92	-809.63	40°22'00.814"N	104°26'06.909"W	0.24	
10835.00	90.400	185.420	6288.76	3765.11	-3678.63	-817.00	40°21'59.888"N	104°26'07.004"W	1.97	
10928.00	90.220	182.900	6288.26	3857.58	-3771.38	-823.75	40°21'58.971"N	104°26'07.091"W	2.72	
11022.00	90.150	178.020	6287.95	3950.21	-3865.34	-824.50	40°21'58.043"N	104°26'07.101"W	5.19	
11115.00	90.090	178.010	6287.76	4041.12	-3958.29	-821.28	40°21'57.124"N	104°26'07.059"W	0.07	



# Actual Wellpath Report

NORTH PLATTE P41-T44-28HNB AWP

Page 6 of 8



REFERENCE WELLPATH IDENTIFICATION			
Operator	BONANZA CREEK OIL COMPANY	Slot	SLOT#07 NORTH PLATTE P41-T44-28HNB (353'FNL & 341'FEL, SEC.28)
Area	COLORADO	Well	NORTH PLATTE P41-T44-28HNB
Field	WELD COUNTY	Wellbore	NORTH PLATTE P41-T44-28HNB AWP
Facility	SEC.28-T05N-R63W		

WELLPATH DATA (126 stations)										
MD [ft]	Inclination [°]	Azimuth [°]	TVD [ft]	Vert Sect [ft]	North [ft]	East [ft]	Latitude	Longitude	DLS [°/100ft]	Comments
11209.00	89.940	177.650	6287.73	4132.95	-4052.22	-817.72	40°21'56.196"N	104°26'07.013"W	0.41	
11302.00	89.880	176.380	6287.88	4223.50	-4145.09	-812.88	40°21'55.278"N	104°26'06.950"W	1.37	
11395.00	89.720	176.300	6288.21	4313.80	-4237.90	-806.94	40°21'54.361"N	104°26'06.874"W	0.19	
11488.00	89.850	177.740	6288.55	4404.36	-4330.77	-802.11	40°21'53.444"N	104°26'06.811"W	1.55	
11577.00	89.910	179.510	6288.74	4491.55	-4419.74	-799.97	40°21'52.564"N	104°26'06.784"W	1.99	LAST BHGE SURVEY (495'FSL & 1080'FEL,SEC.28)
11602.00	89.910	179.510	6288.78	4516.12	-4444.74	-799.76	40°21'52.317"N	104°26'06.781"W	0.00	PTB (470'FSL & 1079'FEL,SEC.28)





# Actual Wellpath Report

NORTH PLATTE P41-T44-28HNB AWP

Page 7 of 8



REFERENCE WELLPATH IDENTIFICATION			
Operator	BONANZA CREEK OIL COMPANY	Slot	SLOT#07 NORTH PLATTE P41-T44-28HNB (353'FNL & 341'FEL, SEC.28)
Area	COLORADO	Well	NORTH PLATTE P41-T44-28HNB
Field	WELD COUNTY	Wellbore	NORTH PLATTE P41-T44-28HNB AWB
Facility	SEC.28-T05N-R63W		

TARGETS								
Name	TVD [ft]	North [ft]	East [ft]	Grid East [US ft]	Grid North [US ft]	Latitude	Longitude	Shape
SEC.28-T05N-R63W	-13.00	81.97	-87.53	3297358.79	1381955.91	40°22'37.049"N	104°25'57.580"W	polygon
NORTH PLATTE P41-T44-28HNB BHL (470'FSL & 1077'FEL, SEC.28)	6305.00	-4443.03	-813.55	3296687.33	1377422.69	40°21'52.334"N	104°26'06.959"W	point
NORTH PLATTE P41-T44-28HNB BHL REV-1 (470'FSL & 1077'FEL, SEC.28)	6305.00	-4444.96	-797.84	3296703.06	1377420.95	40°21'52.315"N	104°26'06.756"W	point
NORTH PLATTE P41-T44-28HNB LP (470'FNL & 1107'FEL, SEC.28)	6305.00	-108.03	-768.53	3296680.15	1381757.74	40°22'35.171"N	104°26'06.379"W	point
NORTH PLATTE P41-T44-28HNB LP REV-1 (10'FNL & 1107'FEL, SEC.28)	6305.00	352.03	-768.53	3296674.62	1382217.74	40°22'39.718"N	104°26'06.379"W	point
NORTH PLATTE P41-T44-28HNB LP REV-2 (10'FNL & 1107'FEL, SEC.28)	6305.00	345.36	-767.32	3296675.91	1382211.08	40°22'39.652"N	104°26'06.364"W	point
NORTH PLATTE P41-T44-28HNB BHL REV-2 (470'FSL & 1077'FEL, SEC.28)	6311.00	-4444.96	-797.84	3296703.06	1377420.95	40°21'52.315"N	104°26'06.756"W	point
NORTH PLATTE P41-T44-28HNB LP REV-3 (10'FNL & 1107'FEL, SEC.28)	6311.00	345.36	-767.32	3296675.91	1382211.08	40°22'39.652"N	104°26'06.364"W	point
SEC.28-T05N-R63W 460'SETBACKS	6420.00	81.97	-87.53	3297358.79	1381955.91	40°22'37.049"N	104°25'57.580"W	polygon

WELLPATH COMPOSITION - Ref Wellbore: NORTH PLATTE P41-T44-28HNB AWB    Ref Wellpath: NORTH PLATTE P41-T44-28HNB AWP				
Start MD [ft]	End MD [ft]	Positional Uncertainty Model	Log Name/Comment	Wellbore
0.00	1595.01	ISCWSA MWD, Rev. 4 (Standard)	3RD PARTY SURFACE SURVEYS <137-1591>	NORTH PLATTE P41-T44-28HNB AWB
1595.01	11577.00	BHI AutoTrak Curve (Axial Corr, Short spacing)	8 1/2" MONOBORE SURVEYS <1678-11577>	NORTH PLATTE P41-T44-28HNB AWB
11577.00	11602.00	Blind Drilling (std)	Projection to bit	NORTH PLATTE P41-T44-28HNB AWB





# Actual Wellpath Report

NORTH PLATTE P41-T44-28HNB AWP

Page 8 of 8



REFERENCE WELLPATH IDENTIFICATION			
Operator	BONANZA CREEK OIL COMPANY	Slot	SLOT#07 NORTH PLATTE P41-T44-28HNB (353'FNL & 341'FEL, SEC.28)
Area	COLORADO	Well	NORTH PLATTE P41-T44-28HNB
Field	WELD COUNTY	Wellbore	NORTH PLATTE P41-T44-28HNB AWB
Facility	SEC.28-T05N-R63W		

WELLPATH COMMENTS				
MD [ft]	Inclination [°]	Azimuth [°]	TVD [ft]	Comment
1678.00	3.950	317.010	1677.47	FIRST BHGE SURVEY (338'FNL & 351'FEL,SEC.28)
6814.00	90.703	183.708	6302.41	TOP OF PRODUCTION (18'FNL & 1076'FEL,SEC.28)
11577.00	89.910	179.510	6288.74	LAST BHGE SURVEY (495'FSL & 1080'FEL,SEC.28)
11602.00	89.910	179.510	6288.78	PTB (470'FSL & 1079'FEL,SEC.28)