


Presented Curves	Description	Units
GRADX	Gamma Ray - Apparent - Down Quadrant - Real-Time 3 ft Average	API
GRAUX	Gamma Ray - Apparent - Up Quadrant - Real-Time 3 ft Average	API
TCDX	Downhole Temperature	degF
ROPA	Depth Averaged ROP 3 ft Average	ft/h
TVD	True Vertical Depth	ft
WOBA	Weight On Bit, Average 1 ft Average	klb
GRAX	Gamma Ray - Apparent - Real-Time 3 ft Average	API

BAKER
HUGHES

a GE company



Company

Well

Interval

Created

Bonanza Creek Oil Company

North Platte P31-T34-28HNB

Date From: 2018-09-27 05:40

Date To: 2018-09-29 07:01

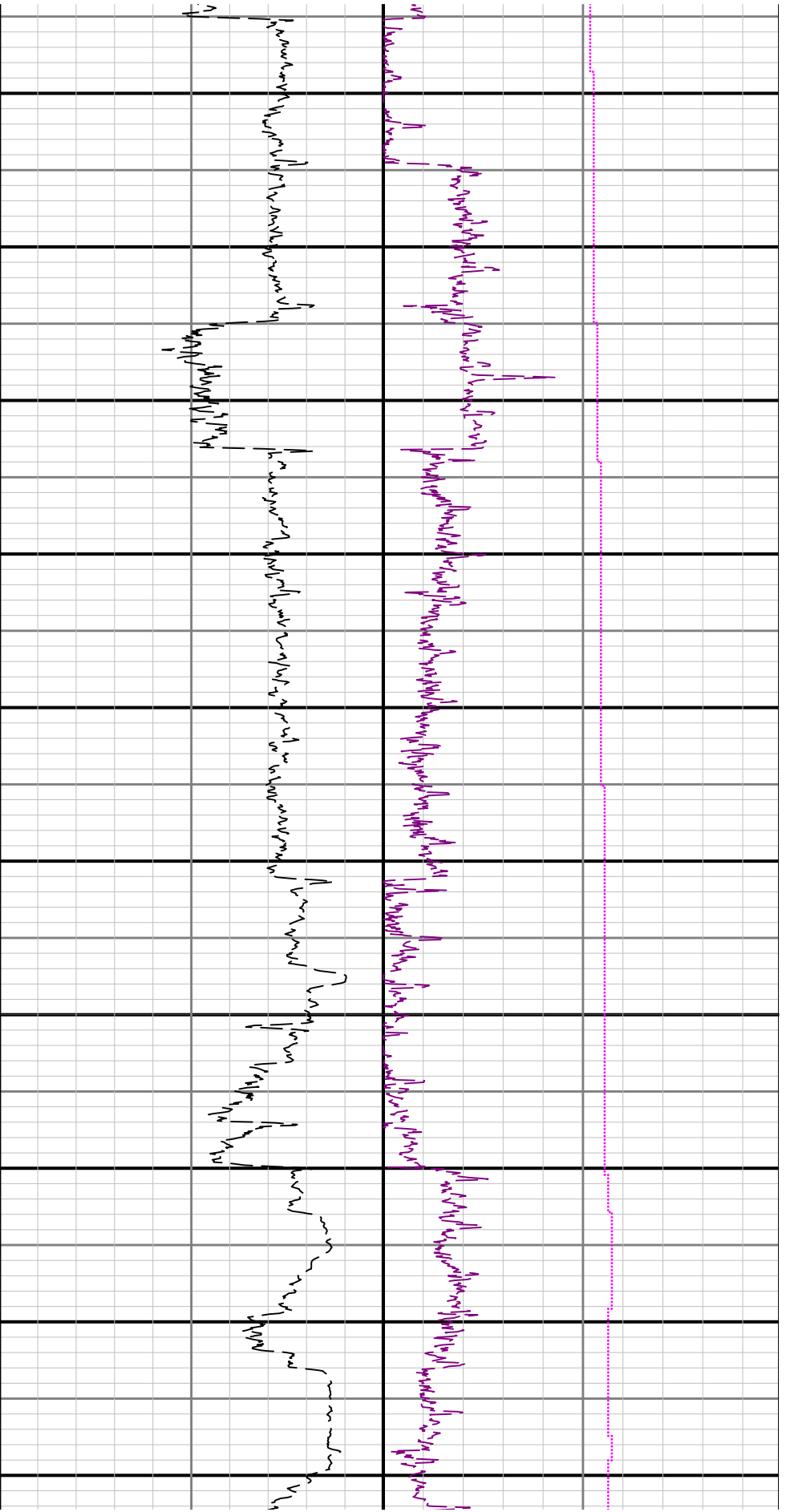
2018-09-29 07:05:41

Top: 0.00 ft

Bottom: 11692.23 ft

<div>Gamma Ray - Apparent 3 ft Average GRAX</div> <div>0200</div> <div>API</div> <div>Azimuthal Gamma Ray - Apparent - Up Quadrant 3 ft Average GRAUX</div> <div>0200</div> <div>API</div> <div>Azimuthal Gamma Ray - Apparent - Down Quadrant 3 ft Average GRADX</div> <div>0200</div> <div>API</div> <div>True Vertical Depth TVD</div> <div>70004950</div> <div>ft</div>	<div>MD 1:1200 feet</div>	<div>Depth Averaged ROP 3 ft Average ROPA</div> <div>10000</div> <div>ft/h</div>	<div>Weight On Bit, Average 1 ft Average WOBA</div> <div>050</div> <div>klb</div> <div>Downhole Temperature TCDX</div> <div>0300</div> <div>degF</div>
---	---------------------------	--	--

<div></div>	<div>4900</div>	<div></div>	<div></div>
<div></div>	<div></div>	<div></div>	<div></div>
<div></div>	<div>5000</div>	<div></div>	<div></div>
<div></div>	<div></div>	<div></div>	<div></div>
<div></div>	<div>5100</div>	<div></div>	<div></div>
<div></div>	<div></div>	<div></div>	<div></div>
<div></div>	<div>5200</div>	<div></div>	<div></div>
<div></div>	<div></div>	<div></div>	<div></div>
<div></div>	<div>5300</div>	<div></div>	<div></div>
<div></div>	<div></div>	<div></div>	<div></div>



5400 5500 5600 5700 5800 5900 6000 6100 6200 6300

