



# Bonanza Creek Energy

North Platte P31-T34-28HNB

API # 05-123-46921

## Production

9/30/2018

Quote #: 17865

Execution #: 11576



## Bonanza Creek Energy

Attention: Mr. Adam Conry | (303) 883.3351 | [AConry@bonanzacrk.com](mailto:AConry@bonanzacrk.com)

Bonanza Creek Energy | 410 17th St Suite 1400 | Denver, CO. 80202

---

Dear Mr. Adam Conry,

Thank you for the opportunity to provide cementing services on this well. BJ Services strives to achieve complete customer satisfaction. If you have any questions regarding the services or data provided, please contact BJ Services at any time.

Sincerely,

Gage Putnam

Field Engineer I | (307) 887-4243 | [Gage.Putnam@bjservices.com](mailto:Gage.Putnam@bjservices.com)

Field Office 1716 East Allison Rd., Cheyenne WY, 82007

Phone: (307) 638-5585

Sales Office 999 18th St. Suite 1200 Denver, CO 80202

Phone: (281) 408-2361

---

# Cementing Treatment



<b>Start Date</b>	9/29/2018	<b>Well</b>	NORTH PLATTE P31-T34-28HNB
<b>End Date</b>	9/29/2018	<b>API#</b>	05-123-46921
<b>Client</b>	BONANZA CREEK ENERGY	<b>County</b>	WELD
<b>Service Sup.</b>	Chad Johnson	<b>State/Province</b>	CO
<b>District</b>	Cheyenne, WY	<b>Formation</b>	NIOBRARA
<b>Type of Job</b>	Long String	<b>Rig</b>	Xtreme 19
<b>Execution ID</b>	EXC-11576-J0M2R502	<b>Project ID</b>	PRJ1011281

## WELL GEOMETRY

Type	ID (in)	OD (in)	Wt. (lb/ft)	MD (ft)	TVD (ft)	Excess(%)
Previous Casing	8.92	9.63	36.00	1,638.00	1,639.00	
Open Hole	8.50	0.00	0.00	11,692.00	6,315.00	12.50
Casing	4.89	5.50	17.00	11,682.00	6,315.00	

**Shoe Length (ft):** 45.00

## HARDWARE

<b>Top Plug Used?</b>	Yes	<b>Centralizers Type</b>	Rigid
<b>Top Plug Provided By</b>	Non BJ	<b>Landing Collar Depth (ft)</b>	11,637
<b>Top Plug Size</b>	5.500	<b>Top Connection Thread</b>	LTC
<b>Centralizers Used</b>	Yes	<b>Top Connection Size</b>	5.5
<b>Centralizers Quantity</b>	95.00		

## CIRCULATION PRIOR TO JOB

<b>Well Circulated By</b>	Rig	<b>PV Mud Out</b>	12
<b>Circulation Prior to Job</b>	Yes	<b>YP Mud In</b>	6
<b>Circulation Time (min)</b>	600.00	<b>YP Mud Out</b>	6
<b>Circulation Rate (bpm)</b>	7.00	<b>Solids Present at End of Circulation</b>	No
<b>Circulation Volume (bbls)</b>	4,200.00	<b>10 sec SGS</b>	3.00
<b>Lost Circulation Prior to Cement Job</b>	No	<b>10 min SGS</b>	5.00
<b>Mud Density In (ppg)</b>	9.60	<b>30 min SGS</b>	9.00
<b>Mud Density Out (ppg)</b>	9.60	<b>Flare Prior to/during the Cement Job</b>	No
<b>PV Mud In</b>	12	<b>Gas Present</b>	No

## TEMPERATURE

<b>Ambient Temperature (°F)</b>	43.00	<b>Mix Water Temperature (°F)</b>	65.00
---------------------------------	-------	-----------------------------------	-------

# Cementing Treatment



## BJ FLUID DETAILS

Fluid Type	Fluid Name	Density (ppg)	Yield (Cu Ft/sk)	H2O Req. (gals/sk)	Planned Top of Fluid (Ft)	Length (Ft)	Vol (sk)	Vol (Cu Ft)	Vol (bbls)
Spacer / Pre Flush / Flush	IntegraGuard EZ Spacer	12.0000			0.00				60.0000
Lead Slurry	BJCem P100.3.01C	12.5000	2.1538	12.23	0.00	5000	605	1,308.0000	232.8000
Tail Slurry	BJCem P50.6.02C	13.5000	1.4772	7.45	5,000.00	6719	1175	1,737.0000	309.4000
Displacement 2	Retarded Water	8.3337			13,244.00	0	0	0.0000	20.0000
Displacement Final	Displacement Final (Water)	8.3308			0.00			0.0000	251.5000

Fluid Type	Fluid Name	Component	Concentration	UOM
Spacer / Pre Flush / Flush	IntegraGuard EZ Spacer	SPACER SURFACTANT, SS-267	0.5000	GPB
Spacer / Pre Flush / Flush	IntegraGuard EZ Spacer	SPACER SURFACTANT, SS-247	0.5000	GPB
Spacer / Pre Flush / Flush	IntegraGuard EZ Spacer	GELLANT WATER, GW-86	1.0000	PPB
Spacer / Pre Flush / Flush	IntegraGuard EZ Spacer	SAND, S-8, Silica Flour, 200 Mesh	242.5200	PPB
Spacer / Pre Flush / Flush	IntegraGuard EZ Spacer	EXTENDER, BENTONITE	5.0000	PPB
Lead Slurry	BJCem P100.3.01C	IntegraSeal CELLO	0.1300	LBS/SK
Lead Slurry	BJCem P100.3.01C	GELLANT WATER, GW-86	0.2000	BWOB
Lead Slurry	BJCem P100.3.01C	FOAM PREVENTER, FP-25	0.3000	BWOB
Lead Slurry	BJCem P100.3.01C	BONDING AGENT, BA-60	0.4000	BWOB
Lead Slurry	BJCem P100.3.01C	RETARDER, SR-20	0.4000	BWOB
Lead Slurry	BJCem P100.3.01C	CEMENT, ASTM TYPE III	100.0000	PCT
Lead Slurry	BJCem P100.3.01C	FLUID LOSS, FL-24	0.3000	BWOB
Lead Slurry	BJCem P100.3.01C	EXTENDER, BENTONITE	4.0000	BWOB
Tail Slurry	BJCem P50.6.02C	FOAM PREVENTER, FP-25	0.3000	BWOB
Tail Slurry	BJCem P50.6.02C	GELLANT WATER, GW-86	0.1000	BWOB
Tail Slurry	BJCem P50.6.02C	Flyash (Rockies)	50.0000	PCT
Tail Slurry	BJCem P50.6.02C	CEMENT, CLASS G	50.0000	PCT
Tail Slurry	BJCem P50.6.02C	FLUID LOSS, FL-66	0.2000	BWOB
Tail Slurry	BJCem P50.6.02C	EXTENDER, BENTONITE	2.0000	BWOB
Tail Slurry	BJCem P50.6.02C	RETARDER, SR-20	0.0700	BWOB
Displacement 2	Retarded Water	RETARDER, R-8L	0.5000	GPB
Displacement 2	Retarded Water	BIOCIDE, BIOC11139W	0.0100	GPB
Displacement Final	Displacement Final (Water)	BIOCIDE, BIOC11139W	0.0100	GPB

# Cementing Treatment



## DISPLACEMENT AND END OF JOB SUMMARY

---

Displaced By	BJ Services	Amount of Cement Returned/Reversed	50.00
Calculated Displacement Volume (bbls)	270.00	Method Used to Verify Returns	Visual
Actual Displacement Volume (bbls)	270.00	Amount of Spacer to Surface	60.00
Did Float Hold?	Yes	Pressure Left on Casing (psi)	0.00
Bump Plug	Yes	Amount Bled Back After Job	2.50
Bump Plug Pressure (psi)	2,100.00	Total Volume Pumped (bbls)	900.00
Were Returns Planned at Surface	Yes	Top Out Cement Spotted	No
Cement returns During Job	Full	Lost Circulation During Cement Job	No

# EVENT LOG



**Customer Name:** BONANZA CREEK ENERGY

**Well Name:** NORTH PLATTE P31-T34-28HNB

**Job Type:** Long String

**Quote ID:** QUO-17865-T1T6S6

**Plan ID:** ORD-11576-J0M2R5

**District:** Cheyenne, WY

**Execution ID:** EXC-11576-J0M2R502

**BJ Supervisor:** Chad Johnson

Seq.	Start Dt./Time	Event	Density (ppg)	Pump Rate (bpm)	Pump Vol (bbls)	Pipe Pressure (psi)	Comments
1	09/29/2018 21:00	Callout					Crew called out requested on location at 0200
2	09/30/2018 01:00	Arrive on Location					Crew arrived on location
3	09/30/2018 01:05	Safety Meeting					Safety meeting
4	09/30/2018 01:20	Spot Units					Spotted all units
5	09/30/2018 01:25	Rig Up					Rigged up all equipment
6	09/30/2018 03:00	Customer					Waiting on rig to circulate the well, Water for cement job was full of algae, call was made to get new water for cement job. Circulated on the well until all water for job was on location
7	09/30/2018 12:45	Safety Meeting					Safety meeting
8	09/30/2018 13:03	Prime Up	8.3400	3.00	5.00	300.00	Fill lines with 5 bbls fresh water
9	09/30/2018 13:06	Pressure Test					Pressure test lines to 5000 psi
10	09/30/2018 13:14	Pump Spacer	12.0000	4.00	60.00	300.00	Pump 20 bbls spacer at 12 ppg, 20 bbls spacer at 11.5 ppg, 20 bbls spacer at 11 ppg
11	09/30/2018 13:33	Pump Lead Cement	12.5000	8.00	233.00	300.00	Pump 233 bbls lead cement at 12.5 ppg (605 sks, 2.15 Y, 12.23 gal/sk)
12	09/30/2018 14:10	Pump Tail Cement	13.5000	8.00	310.00	300.00	Pump 310 bbls tail cement at 13.5 ppg (1175 sks, 1.48 Y, 7.45 gal/sk)
13	09/30/2018 15:03	Other (See comment)					Shutdown
14	09/30/2018 15:04	Clean Pumps and Lines					Wash pumps and lines to the pit
15	09/30/2018 15:15	Drop Top Plug					Drop top plug
16	09/30/2018 15:16	Pump Displacement	8.3400	8.00	250.00	2,000.00	Pump 270 bbls displacement
17	09/30/2018 15:42	Spacer Back to Surface					Spacer back to surface at 160 bbls away, 60 bbls spacer to surface

# EVENT LOG

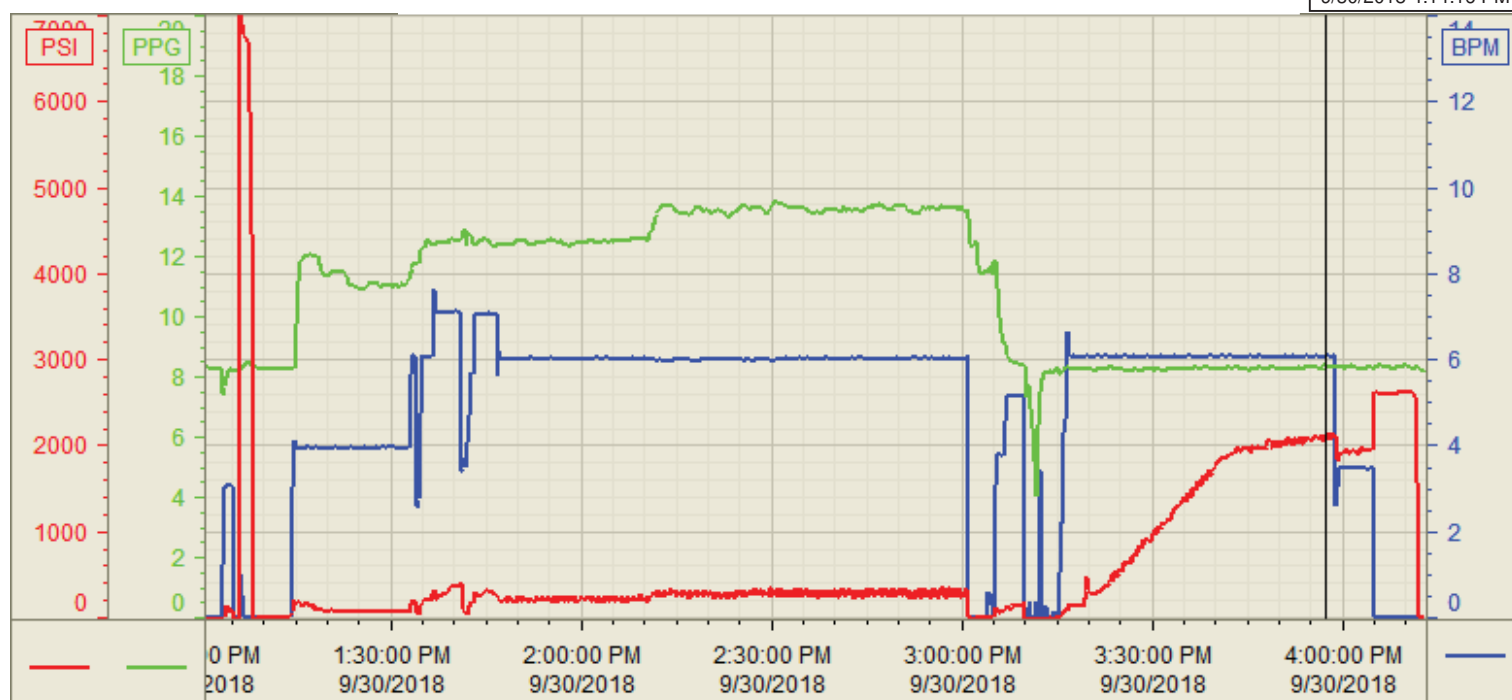


18	09/30/2018 15:53	Cement Back to Surface					Cement back to surface at 220 bbls away, 50 bbls cement to surface
19	09/30/2018 16:00	Other (See comment)	8.3400	3.50	20.00	2,000.00	Slow pump rate to 3.5 bpm at 150 bbls away
20	09/30/2018 16:05	Land Plug					Land plug at 2100 psi, took to 2600 psi
21	09/30/2018 16:10	Check Floats					Check floats, floats holding, 2.5 bbls back
22	09/30/2018 16:15	Safety Meeting					Safety meeting
23	09/30/2018 16:30	Rig Down					Rigged down all equipment
24	09/30/2018 18:00	Leave Location					Crew departed location

Customer: Bonanza Creek  
Well Number: P31-T34-28HNB  
Lease Info: North Platte



Print Date/Time  
9/30/2018 4:14:16 PM



	Name	Y value	X value/time stamp	Tag name Y
1	PS - Press (PSI)	2089.3	9/30/2018 3:57:30 PM	CementorPS_DISCHARGE_PRESS_DIAL
2	DH - Density (PPG)	8.33 i.	9/30/2018 3:57:29 PM i.	CementorDENSITY2_ACTUAL_RATE
3	Combined Rate	6.06	9/30/2018 3:57:32 PM	CementorFlow_Combined
4				
5				

Source: Control1 4:14:11 PM