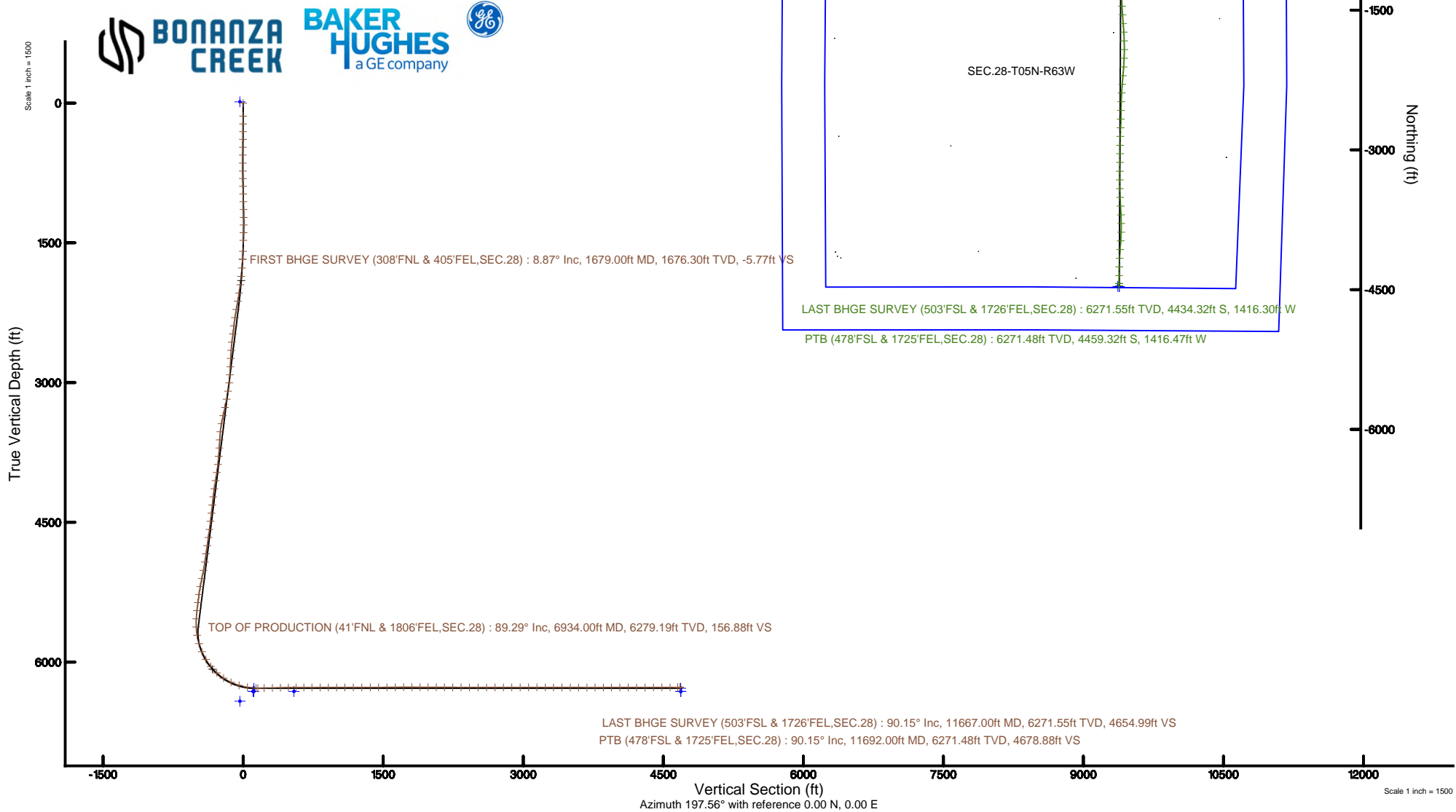


# BONANZA CREEK OIL COMPANY

Location:	COLORADO	Slot:	SLOT#05 NORTH PLATTE P31-T34-28HNB (326°FNL & 370°FEL, SEC.28)
Field:	WELD COUNTY	Well:	NORTH PLATTE P31-T34-28HNB
Facility:	SEC.28-T05N-R63W	Wellbore:	NORTH PLATTE P31-T34-28HNB PWB
Plot reference wellpath is NORTH PLATTE P31-T34-28HNB (REV-D.0) PWP			
True vertical depths are referenced to RIG (17KB) (RKB)		Grid System: NAD83 / Lambert Colorado SP, Northern Zone (501), US feet	
Measured depths are referenced to RIG (17KB) (RKB)		North Reference: True north	
RIG (17KB) (RKB) to Mean Sea Level: 4565 feet		Scale: True distance	
Mean Sea Level to Ground level (At Slot: SLOT#05 NORTH PLATTE P31-T34-28HNB (326°FNL & 370°FEL, SEC.28)): 0 feet		Depths are in feet	
Coordinates are in feet referenced to Slot		Created by: bushjarnh on 2018-12-12	
		Database: Denver	





# Actual Wellpath Report

NORTH PLATTE P31-T34-28HNB AWP

Page 1 of 8



REFERENCE WELLPATH IDENTIFICATION			
Operator	BONANZA CREEK OIL COMPANY	Slot	SLOT#05 NORTH PLATTE P31-T34-28HNB (326'FNL & 370'FEL, SEC.28)
Area	COLORADO	Well	NORTH PLATTE P31-T34-28HNB
Field	WELD COUNTY	Wellbore	NORTH PLATTE P31-T34-28HNB AWB
Facility	SEC.28-T05N-R63W		

REPORT SETUP INFORMATION			
Projection System	NAD83 / Lambert Colorado SP, Northern Zone (501), US feet	Software System	WellArchitect® 5.1
North Reference	True	User	Bushjamh
Scale	0.999959	Report Generated	12/12/2018 at 8:08:00 AM
Convergence at slot	0.69° East	Database/Source file	Denver/NORTH_PLATTE_P31-T34-28HNB_AWP.xml

WELLPATH LOCATION						
	Local coordinates		Grid coordinates		Geographic coordinates	
	North[ft]	East[ft]	Easting[US ft]	Northing[US ft]	Latitude	Longitude
Slot Location	1438.05	2520.64	3297417.41	1381901.97	40°22'36.509"N	104°25'56.831"W
Facility Reference Pt			3294914.22	1380434.00	40°22'22.300"N	104°26'29.400"W
Field Reference Pt			3224525.77	1254425.87	40°01'44.400"N	104°41'53.556"W

WELLPATH DATUM			
Calculation method	Minimum curvature	RIG (17'KB) (RKB) to Installation Vertical Datum	4565.00ft
Horizontal Reference Pt	Slot	RIG (17'KB) (RKB) to Mean Sea Level	4565.00ft
Vertical Reference Pt	RIG (17'KB) (RKB)	RIG (17'KB) (RKB) to Ground Level at Slot (SLOT#05 NORTH PLATTE P31-T34-28HNB (326'FNL & 370'FEL, SEC.28))	4565.00ft
MD Reference Pt	RIG (17'KB) (RKB)	Section Origin	N 0.00, E 0.00 ft
Field Vertical Reference	Mean Sea Level	Section Azimuth	197.56°



# Actual Wellpath Report

NORTH PLATTE P31-T34-28HNB AWP

Page 2 of 8



## REFERENCE WELLPATH IDENTIFICATION

Operator	BONANZA CREEK OIL COMPANY	Slot	SLOT#05 NORTH PLATTE P31-T34-28HNB (326'FNL & 370'FEL, SEC.28)
Area	COLORADO	Well	NORTH PLATTE P31-T34-28HNB
Field	WELD COUNTY	Wellbore	NORTH PLATTE P31-T34-28HNB AWB
Facility	SEC.28-T05N-R63W		

## WELLPATH DATA (129 stations)

MD [ft]	Inclination [°]	Azimuth [°]	TVD [ft]	Vert Sect [ft]	North [ft]	East [ft]	Latitude	Longitude	DLS [°/100ft]	Comments
0.00	0.000	16.700	0.00	0.00	0.00	0.00	40°22'36.509"N	104°25'56.831"W	0.00	
140.01	0.300	16.700	140.01	-0.37	0.35	0.11	40°22'36.512"N	104°25'56.830"W	0.21	
225.01	0.400	6.800	225.01	-0.88	0.86	0.20	40°22'36.517"N	104°25'56.828"W	0.14	
307.01	0.300	8.900	307.01	-1.37	1.36	0.27	40°22'36.522"N	104°25'56.827"W	0.12	
389.01	0.400	349.800	389.00	-1.84	1.85	0.25	40°22'36.527"N	104°25'56.828"W	0.19	
474.01	0.600	4.100	474.00	-2.53	2.58	0.23	40°22'36.535"N	104°25'56.828"W	0.28	
558.01	1.100	350.800	557.99	-3.68	3.82	0.14	40°22'36.547"N	104°25'56.829"W	0.64	
644.01	0.200	301.800	643.99	-4.46	4.71	-0.12	40°22'36.556"N	104°25'56.833"W	1.14	
729.01	1.000	156.000	728.98	-3.94	4.11	0.05	40°22'36.550"N	104°25'56.830"W	1.38	
811.01	1.100	164.900	810.97	-2.74	2.70	0.55	40°22'36.536"N	104°25'56.824"W	0.23	
894.01	1.300	170.900	893.95	-1.23	1.00	0.90	40°22'36.519"N	104°25'56.819"W	0.28	
976.01	1.300	172.100	975.93	0.44	-0.84	1.18	40°22'36.501"N	104°25'56.816"W	0.03	
1059.01	1.400	161.200	1058.91	2.11	-2.73	1.64	40°22'36.482"N	104°25'56.810"W	0.33	
1143.01	1.500	159.300	1142.88	3.80	-4.73	2.35	40°22'36.462"N	104°25'56.801"W	0.13	
1227.01	0.900	234.900	1226.86	5.19	-6.14	2.20	40°22'36.448"N	104°25'56.803"W	1.84	
1309.01	2.400	292.500	1308.83	5.55	-5.85	0.09	40°22'36.451"N	104°25'56.830"W	2.52	
1392.01	4.900	303.500	1391.66	4.43	-3.23	-4.47	40°22'36.477"N	104°25'56.889"W	3.11	
1474.01	6.800	301.300	1473.23	2.31	1.23	-11.54	40°22'36.521"N	104°25'56.980"W	2.33	
1593.01	8.000	303.900	1591.24	-1.69	9.50	-24.43	40°22'36.603"N	104°25'57.147"W	1.05	
1679.00	8.870	308.800	1676.30	-5.77	17.00	-34.57	40°22'36.677"N	104°25'57.278"W	1.31	FIRST BHGE SURVEY (308'FNL & 405'FEL, SEC.28)
1774.00	11.410	311.740	1769.80	-12.27	27.84	-47.29	40°22'36.784"N	104°25'57.442"W	2.73	
1867.00	13.960	312.790	1860.53	-20.82	41.59	-62.39	40°22'36.920"N	104°25'57.637"W	2.75	
1960.00	16.980	313.090	1950.15	-31.46	58.49	-80.54	40°22'37.087"N	104°25'57.872"W	3.25	
2054.00	19.380	312.520	2039.45	-43.96	78.41	-102.06	40°22'37.284"N	104°25'58.150"W	2.56	
2147.00	21.320	314.330	2126.64	-58.08	100.66	-125.53	40°22'37.504"N	104°25'58.453"W	2.19	
2242.00	21.680	314.510	2215.03	-73.81	125.03	-150.40	40°22'37.744"N	104°25'58.774"W	0.39	
2336.00	21.210	309.130	2302.53	-87.93	147.93	-175.97	40°22'37.971"N	104°25'59.105"W	2.15	
2431.00	20.540	303.900	2391.30	-98.94	168.07	-203.14	40°22'38.170"N	104°25'59.456"W	2.08	
2524.00	20.660	309.270	2478.36	-109.59	187.56	-229.39	40°22'38.362"N	104°25'59.795"W	2.04	
2618.00	20.490	305.610	2566.37	-120.82	207.64	-255.60	40°22'38.561"N	104°26'00.134"W	1.38	



# Actual Wellpath Report

NORTH PLATTE P31-T34-28HNB AWP

Page 3 of 8



## REFERENCE WELLPATH IDENTIFICATION

Operator	BONANZA CREEK OIL COMPANY	Slot	SLOT#05 NORTH PLATTE P31-T34-28HNB (326'FNL & 370'FEL, SEC.28)
Area	COLORADO	Well	NORTH PLATTE P31-T34-28HNB
Field	WELD COUNTY	Wellbore	NORTH PLATTE P31-T34-28HNB AWB
Facility	SEC.28-T05N-R63W		

## WELLPATH DATA (129 stations)

MD [ft]	Inclination [°]	Azimuth [°]	TVD [ft]	Vert Sect [ft]	North [ft]	East [ft]	Latitude	Longitude	DLS [°/100ft]	Comments
2711.00	20.200	296.460	2653.59	-128.35	224.27	-283.22	40°22'38.725"N	104°26'00.490"W	3.43	
2804.00	20.210	294.780	2740.87	-132.85	238.16	-312.17	40°22'38.862"N	104°26'00.865"W	0.62	
2899.00	20.190	294.880	2830.03	-137.00	251.94	-341.95	40°22'38.999"N	104°26'01.249"W	0.04	
2991.00	20.320	297.290	2916.34	-141.72	265.94	-370.55	40°22'39.137"N	104°26'01.619"W	0.92	
3084.00	20.350	305.250	3003.56	-149.36	282.68	-398.11	40°22'39.302"N	104°26'01.975"W	2.97	
3178.00	20.510	312.740	3091.66	-161.33	303.29	-423.55	40°22'39.506"N	104°26'02.304"W	2.78	
3271.00	20.650	317.600	3178.73	-176.47	326.46	-446.58	40°22'39.735"N	104°26'02.601"W	1.84	
3365.00	21.040	324.160	3266.59	-194.83	352.38	-467.64	40°22'39.991"N	104°26'02.873"W	2.52	
3459.00	21.260	322.740	3354.26	-214.71	379.63	-487.84	40°22'40.260"N	104°26'03.134"W	0.59	
3552.00	21.690	314.750	3440.82	-232.28	405.15	-510.25	40°22'40.513"N	104°26'03.424"W	3.18	
3645.00	21.460	302.690	3527.35	-244.58	426.45	-536.79	40°22'40.723"N	104°26'03.767"W	4.77	
3739.00	21.290	295.110	3614.90	-251.31	442.98	-566.72	40°22'40.886"N	104°26'04.154"W	2.94	
3833.00	21.130	296.520	3702.54	-256.18	457.79	-597.33	40°22'41.033"N	104°26'04.549"W	0.57	
3927.00	20.990	298.900	3790.26	-262.13	473.49	-627.23	40°22'41.188"N	104°26'04.936"W	0.92	
4021.00	21.150	305.430	3877.99	-270.64	491.46	-655.79	40°22'41.365"N	104°26'05.305"W	2.50	
4114.00	20.890	309.110	3964.80	-281.88	511.64	-682.33	40°22'41.565"N	104°26'05.648"W	1.45	
4207.00	21.180	313.380	4051.61	-295.29	533.64	-707.41	40°22'41.782"N	104°26'05.972"W	1.68	
4301.00	21.150	310.490	4139.27	-309.29	556.32	-732.65	40°22'42.006"N	104°26'06.298"W	1.11	
4394.00	21.060	304.970	4226.04	-320.82	576.79	-759.10	40°22'42.209"N	104°26'06.640"W	2.14	
4487.00	20.570	302.440	4312.97	-330.02	595.13	-786.58	40°22'42.390"N	104°26'06.995"W	1.10	
4581.00	20.650	304.760	4400.96	-339.16	613.44	-814.14	40°22'42.571"N	104°26'07.351"W	0.87	
4675.00	20.700	305.800	4488.90	-349.25	632.61	-841.23	40°22'42.760"N	104°26'07.701"W	0.39	
4768.00	20.610	310.150	4575.93	-360.69	652.78	-867.07	40°22'42.959"N	104°26'08.035"W	1.65	
4861.00	20.790	308.790	4662.93	-372.95	673.67	-892.45	40°22'43.166"N	104°26'08.363"W	0.55	
4954.00	20.720	309.520	4749.89	-385.07	694.48	-918.01	40°22'43.371"N	104°26'08.693"W	0.29	
5048.00	19.840	310.010	4838.06	-397.38	715.32	-943.05	40°22'43.577"N	104°26'09.016"W	0.95	
5141.00	17.860	314.860	4926.08	-409.95	735.53	-965.25	40°22'43.777"N	104°26'09.303"W	2.71	
5235.00	20.480	317.940	5014.86	-424.88	757.91	-986.49	40°22'43.998"N	104°26'09.578"W	2.99	
5329.00	21.510	318.840	5102.62	-442.14	783.10	-1008.85	40°22'44.247"N	104°26'09.867"W	1.15	
5422.00	21.860	315.990	5189.04	-459.23	808.38	-1032.10	40°22'44.497"N	104°26'10.167"W	1.19	



# Actual Wellpath Report

NORTH PLATTE P31-T34-28HNB AWP

Page 4 of 8



## REFERENCE WELLPATH IDENTIFICATION

Operator	BONANZA CREEK OIL COMPANY	Slot	SLOT#05 NORTH PLATTE P31-T34-28HNB (326'FNL & 370'FEL, SEC.28)
Area	COLORADO	Well	NORTH PLATTE P31-T34-28HNB
Field	WELD COUNTY	Wellbore	NORTH PLATTE P31-T34-28HNB AWB
Facility	SEC.28-T05N-R63W		

## WELLPATH DATA (129 stations) † = interpolated/extrapolated station

MD [ft]	Inclination [°]	Azimuth [°]	TVD [ft]	Vert Sect [ft]	North [ft]	East [ft]	Latitude	Longitude	DLS [°/100ft]	Comments
5515.00	21.820	306.960	5275.39	-473.22	831.24	-1057.95	40°22'44.723"N	104°26'10.501"W	3.61	
5608.00	21.380	306.660	5361.86	-484.51	851.75	-1085.36	40°22'44.925"N	104°26'10.855"W	0.49	
5701.00	22.050	304.140	5448.26	-495.03	871.67	-1113.41	40°22'45.122"N	104°26'11.218"W	1.23	
5795.00	22.010	293.730	5535.43	-501.96	888.67	-1144.15	40°22'45.290"N	104°26'11.615"W	4.15	
5889.00	21.580	282.870	5622.75	-502.44	899.61	-1177.14	40°22'45.398"N	104°26'12.041"W	4.31	
5982.00	15.580	250.470	5711.09	-493.47	899.24	-1205.68	40°22'45.395"N	104°26'12.410"W	12.60	
6076.00	17.620	219.750	5801.34	-472.64	884.05	-1226.72	40°22'45.245"N	104°26'12.682"W	9.47	
6169.00	24.370	217.950	5888.11	-441.59	858.07	-1247.54	40°22'44.988"N	104°26'12.951"W	7.29	
6262.00	30.980	207.310	5970.48	-399.94	821.61	-1270.36	40°22'44.628"N	104°26'13.246"W	8.85	
6355.00	39.810	203.320	6046.23	-346.62	772.90	-1293.18	40°22'44.146"N	104°26'13.541"W	9.81	
6450.00	46.960	205.910	6115.23	-281.92	713.66	-1320.42	40°22'43.561"N	104°26'13.893"W	7.75	
6542.00	56.640	205.470	6172.05	-210.43	648.58	-1351.71	40°22'42.918"N	104°26'14.297"W	10.53	
6634.00	65.140	199.850	6216.80	-130.48	574.46	-1382.48	40°22'42.185"N	104°26'14.694"W	10.66	
6727.00	73.330	195.720	6249.75	-43.62	491.72	-1408.93	40°22'41.368"N	104°26'15.036"W	9.73	
6819.00	80.910	189.210	6270.27	45.59	404.25	-1428.19	40°22'40.503"N	104°26'15.285"W	10.74	
6914.00	88.740	180.780	6278.84	137.77	310.15	-1436.37	40°22'39.573"N	104°26'15.390"W	12.08	
6934.00†	89.288	180.058	6279.19	156.88	290.15	-1436.52	40°22'39.376"N	104°26'15.392"W	4.53	TOP OF PRODUCTION (41'FNL & 1806'FEL, SEC.28)
7006.00	91.260	177.460	6278.84	225.02	218.18	-1434.96	40°22'38.665"N	104°26'15.372"W	4.53	
7100.00	91.450	175.590	6276.62	312.73	124.38	-1429.26	40°22'37.738"N	104°26'15.298"W	2.00	
7194.00	90.740	173.250	6274.83	399.14	30.85	-1420.12	40°22'36.813"N	104°26'15.180"W	2.60	
7287.00	90.800	172.610	6273.58	483.67	-61.43	-1408.68	40°22'35.902"N	104°26'15.032"W	0.69	
7380.00	90.090	169.070	6272.85	566.72	-153.23	-1393.88	40°22'34.994"N	104°26'14.841"W	3.88	
7474.00	90.000	172.350	6272.78	650.57	-245.98	-1378.70	40°22'34.078"N	104°26'14.645"W	3.49	
7568.00	90.120	176.310	6272.68	736.93	-339.50	-1369.42	40°22'33.154"N	104°26'14.525"W	4.21	
7661.00	90.090	179.080	6272.51	824.38	-432.42	-1365.68	40°22'32.236"N	104°26'14.477"W	2.98	
7754.00	90.090	179.010	6272.36	912.57	-525.40	-1364.13	40°22'31.317"N	104°26'14.456"W	0.08	
7848.00	90.090	178.430	6272.22	1001.53	-619.38	-1362.03	40°22'30.388"N	104°26'14.429"W	0.62	
7941.00	90.120	179.260	6272.05	1089.61	-712.36	-1360.15	40°22'29.469"N	104°26'14.405"W	0.89	
8035.00	90.120	181.740	6271.85	1179.46	-806.35	-1360.97	40°22'28.541"N	104°26'14.415"W	2.64	
8129.00	90.060	183.020	6271.70	1270.18	-900.27	-1364.88	40°22'27.612"N	104°26'14.466"W	1.36	



# Actual Wellpath Report

NORTH PLATTE P31-T34-28HNB AWP

Page 5 of 8



## REFERENCE WELLPATH IDENTIFICATION

Operator	BONANZA CREEK OIL COMPANY	Slot	SLOT#05 NORTH PLATTE P31-T34-28HNB (326'FNL & 370'FEL, SEC.28)
Area	COLORADO	Well	NORTH PLATTE P31-T34-28HNB
Field	WELD COUNTY	Wellbore	NORTH PLATTE P31-T34-28HNB AWB
Facility	SEC.28-T05N-R63W		

## WELLPATH DATA (129 stations)

MD [ft]	Inclination [°]	Azimuth [°]	TVD [ft]	Vert Sect [ft]	North [ft]	East [ft]	Latitude	Longitude	DLS [°/100ft]	Comments
8223.00	90.120	183.870	6271.55	1361.34	-994.09	-1370.53	40°22'26.685"N	104°26'14.539"W	0.91	
8314.00	90.090	185.430	6271.39	1450.04	-1084.79	-1377.90	40°22'25.789"N	104°26'14.634"W	1.71	
8407.00	90.220	183.930	6271.14	1540.69	-1177.48	-1385.49	40°22'24.873"N	104°26'14.732"W	1.62	
8500.00	90.920	180.910	6270.21	1630.45	-1270.38	-1389.42	40°22'23.955"N	104°26'14.783"W	3.33	
8593.00	89.910	178.120	6269.54	1718.86	-1363.36	-1388.63	40°22'23.036"N	104°26'14.772"W	3.19	
8687.00	89.780	177.060	6269.79	1807.20	-1457.28	-1384.68	40°22'22.108"N	104°26'14.721"W	1.14	
8780.00	89.940	176.250	6270.02	1894.08	-1550.12	-1379.25	40°22'21.191"N	104°26'14.651"W	0.89	
8874.00	89.720	175.240	6270.30	1981.34	-1643.86	-1372.28	40°22'20.265"N	104°26'14.561"W	1.10	
8967.00	89.850	176.420	6270.65	2067.73	-1736.61	-1365.51	40°22'19.348"N	104°26'14.473"W	1.28	
9061.00	89.850	178.560	6270.89	2156.01	-1830.51	-1361.40	40°22'18.420"N	104°26'14.420"W	2.28	
9154.00	89.820	179.990	6271.16	2244.31	-1923.50	-1360.22	40°22'17.501"N	104°26'14.405"W	1.54	
9247.00	89.910	182.170	6271.38	2333.48	-2016.48	-1361.97	40°22'16.582"N	104°26'14.428"W	2.35	
9341.00	89.750	184.100	6271.66	2424.51	-2110.34	-1367.11	40°22'15.655"N	104°26'14.494"W	2.06	
9435.00	90.090	185.360	6271.79	2516.16	-2204.01	-1374.86	40°22'14.729"N	104°26'14.594"W	1.39	
9528.00	90.030	184.040	6271.69	2606.82	-2296.70	-1382.49	40°22'13.813"N	104°26'14.692"W	1.42	
9621.00	89.880	183.100	6271.76	2697.06	-2389.52	-1388.28	40°22'12.896"N	104°26'14.767"W	1.02	
9715.00	89.970	182.050	6271.89	2787.86	-2483.42	-1392.50	40°22'11.968"N	104°26'14.822"W	1.12	
9808.00	90.370	181.370	6271.61	2877.32	-2576.38	-1395.27	40°22'11.050"N	104°26'14.857"W	0.85	
9901.00	89.940	180.550	6271.36	2966.45	-2669.36	-1396.83	40°22'10.131"N	104°26'14.877"W	1.00	
9995.00	89.910	182.950	6271.48	3056.88	-2763.31	-1399.70	40°22'09.202"N	104°26'14.914"W	2.55	
10088.00	90.000	181.180	6271.56	3146.50	-2856.25	-1403.05	40°22'08.284"N	104°26'14.958"W	1.91	
10182.00	89.850	180.880	6271.68	3236.61	-2950.23	-1404.74	40°22'07.355"N	104°26'14.979"W	0.36	
10273.00	89.780	180.580	6271.97	3323.71	-3041.23	-1405.90	40°22'06.456"N	104°26'14.994"W	0.34	
10367.00	89.940	180.700	6272.20	3413.64	-3135.22	-1406.95	40°22'05.527"N	104°26'15.008"W	0.21	
10461.00	89.940	180.520	6272.30	3503.55	-3229.21	-1407.95	40°22'04.599"N	104°26'15.021"W	0.19	
10554.00	89.880	180.190	6272.45	3592.39	-3322.21	-1408.53	40°22'03.680"N	104°26'15.028"W	0.36	
10648.00	89.970	178.750	6272.57	3681.74	-3416.21	-1407.66	40°22'02.751"N	104°26'15.017"W	1.53	
10741.00	89.850	177.400	6272.72	3769.41	-3509.15	-1404.54	40°22'01.832"N	104°26'14.976"W	1.46	
10835.00	90.370	177.540	6272.54	3857.68	-3603.06	-1400.39	40°22'00.904"N	104°26'14.923"W	0.57	
10929.00	90.030	177.160	6272.21	3945.89	-3696.96	-1396.04	40°21'59.976"N	104°26'14.866"W	0.54	





# Actual Wellpath Report

NORTH PLATTE P31-T34-28HNB AWP

Page 6 of 8



REFERENCE WELLPATH IDENTIFICATION			
Operator	BONANZA CREEK OIL COMPANY	Slot	SLOT#05 NORTH PLATTE P31-T34-28HNB (326'FNL & 370'FEL, SEC.28)
Area	COLORADO	Well	NORTH PLATTE P31-T34-28HNB
Field	WELD COUNTY	Wellbore	NORTH PLATTE P31-T34-28HNB AWP
Facility	SEC.28-T05N-R63W		

WELLPATH DATA (129 stations)										
MD [ft]	Inclination [°]	Azimuth [°]	TVD [ft]	Vert Sect [ft]	North [ft]	East [ft]	Latitude	Longitude	DLS [°/100ft]	Comments
11022.00	89.880	179.140	6272.28	4033.60	-3789.90	-1393.04	40°21'59.058"N	104°26'14.828"W	2.14	
11116.00	89.910	181.800	6272.45	4123.44	-3883.89	-1393.81	40°21'58.129"N	104°26'14.837"W	2.83	
11209.00	90.060	183.930	6272.48	4213.39	-3976.77	-1398.46	40°21'57.211"N	104°26'14.897"W	2.30	
11303.00	90.120	183.920	6272.33	4304.74	-4070.55	-1404.89	40°21'56.285"N	104°26'14.981"W	0.06	
11396.00	90.090	182.480	6272.16	4394.83	-4163.40	-1410.08	40°21'55.367"N	104°26'15.048"W	1.55	
11489.00	90.120	181.470	6271.99	4484.41	-4256.35	-1413.29	40°21'54.449"N	104°26'15.089"W	1.09	
11582.00	90.150	180.980	6271.77	4573.65	-4349.32	-1415.28	40°21'53.530"N	104°26'15.114"W	0.53	
11667.00	90.150	180.400	6271.55	4654.99	-4434.32	-1416.30	40°21'52.690"N	104°26'15.128"W	0.68	LAST BHGE SURVEY (503'FSL & 1726'FEL, SEC.28)
11692.00	90.150	180.400	6271.48	4678.88	-4459.32	-1416.47	40°21'52.443"N	104°26'15.130"W	0.00	PTB (478'FSL & 1725'FEL, SEC.28)



# Actual Wellpath Report

NORTH PLATTE P31-T34-28HNB AWP

Page 7 of 8



REFERENCE WELLPATH IDENTIFICATION			
Operator	BONANZA CREEK OIL COMPANY	Slot	SLOT#05 NORTH PLATTE P31-T34-28HNB (326'FNL & 370'FEL, SEC.28)
Area	COLORADO	Well	NORTH PLATTE P31-T34-28HNB
Field	WELD COUNTY	Wellbore	NORTH PLATTE P31-T34-28HNB AWB
Facility	SEC.28-T05N-R63W		

TARGETS								
Name	TVD [ft]	North [ft]	East [ft]	Grid East [US ft]	Grid North [US ft]	Latitude	Longitude	Shape
SEC.28-T05N-R63W	-13.00	54.65	-57.97	3297358.79	1381955.91	40°22'37.049"N	104°25'57.580"W	polygon
NORTH PLATTE P31-T34-28HNB BHL REV-2 (470'FSL & 1723'FEL, SEC.28)	6281.00	-4467.92	-1414.24	3296057.12	1377417.54	40°21'52.358"N	104°26'15.101"W	point
NORTH PLATTE P31-T34-28HNB LP REV-3 (10'FNL & 1761'FEL, SEC.28)	6281.00	320.63	-1391.68	3296022.03	1382205.81	40°22'39.677"N	104°26'14.813"W	point
NORTH PLATTE P31-T34-28HNB BHL (470'FSL & 1723'FEL, SEC.28)	6315.00	-4465.35	-1429.98	3296041.35	1377419.92	40°21'52.383"N	104°26'15.304"W	point
NORTH PLATTE P31-T34-28HNB BHL REV-1 (470'FSL & 1723'FEL, SEC.28)	6315.00	-4467.88	-1414.22	3296057.13	1377417.58	40°21'52.358"N	104°26'15.101"W	point
NORTH PLATTE P31-T34-28HNB LP (470'FNL & 1761'FEL, SEC.28)	6315.00	-130.35	-1392.97	3296026.17	1381754.86	40°22'35.221"N	104°26'14.829"W	point
NORTH PLATTE P31-T34-28HNB LP REV-1 (10'FNL & 1761'FEL, SEC.28)	6315.00	330.35	-1392.97	3296020.62	1382215.51	40°22'39.773"N	104°26'14.830"W	point
NORTH PLATTE P31-T34-28HNB LP REV-2 (10'FNL & 1761'FEL, SEC.28)	6315.00	320.61	-1391.66	3296022.05	1382205.79	40°22'39.677"N	104°26'14.813"W	point
SEC.28-T05N-R63W 460'SETBACKS	6420.00	54.65	-57.97	3297358.79	1381955.91	40°22'37.049"N	104°25'57.580"W	polygon

WELLPATH COMPOSITION - Ref Wellbore: NORTH PLATTE P31-T34-28HNB AWB    Ref Wellpath: NORTH PLATTE P31-T34-28HNB AWP				
Start MD [ft]	End MD [ft]	Positional Uncertainty Model	Log Name/Comment	Wellbore
0.00	1593.01	ISCWSA MWD, Rev. 4 (Standard)	3RD PARTY SURFACE SURVEYS <136-1589>	NORTH PLATTE P31-T34-28HNB AWB
1593.01	11667.00	BHI AutoTrak Curve (Axial Corr, Short spacing)	BHI ATC SURVEYS <1679-11667>	NORTH PLATTE P31-T34-28HNB AWB
11667.00	11692.00	Blind Drilling (std)	Projection to bit	NORTH PLATTE P31-T34-28HNB AWB





# Actual Wellpath Report

NORTH PLATTE P31-T34-28HNB AWP

Page 8 of 8



REFERENCE WELLPATH IDENTIFICATION			
Operator	BONANZA CREEK OIL COMPANY	Slot	SLOT#05 NORTH PLATTE P31-T34-28HNB (326'FNL & 370'FEL, SEC.28)
Area	COLORADO	Well	NORTH PLATTE P31-T34-28HNB
Field	WELD COUNTY	Wellbore	NORTH PLATTE P31-T34-28HNB AWB
Facility	SEC.28-T05N-R63W		

WELLPATH COMMENTS				
MD [ft]	Inclination [°]	Azimuth [°]	TVD [ft]	Comment
1679.00	8.870	308.800	1676.30	FIRST BHGE SURVEY (308'FNL & 405'FEL,SEC.28)
6934.00	89.288	180.058	6279.19	TOP OF PRODUCTION (41'FNL & 1806'FEL,SEC.28)
11667.00	90.150	180.400	6271.55	LAST BHGE SURVEY (503'FSL & 1726'FEL,SEC.28)
11692.00	90.150	180.400	6271.48	PTB (478'FSL & 1725'FEL,SEC.28)