

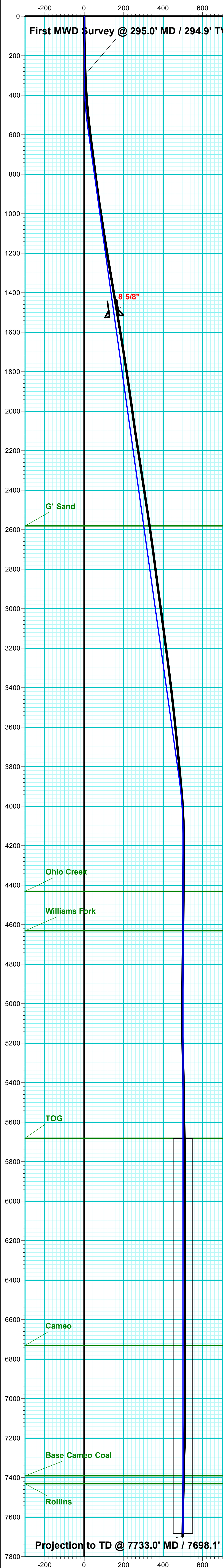
Company Name: Laramie Energy, LLC
BCU 0993-21-05W
Mesa County, CO
Rig: H&P #522
Created By: Will Jircik
Date: 10/01/2018

BCU 0993-21-05W
Mesa County, CO
Q181288 & RM-181072
Design #2



PROJECT DETAILS:		Mesa County, CO
Geodetic System:	US State Plane 1983	
Datum:	North American Datum 1983	
Ellipsoid:	GRS 1980	
Zone:	Colorado Central Zone	
System Datum:	Mean Sea Level	

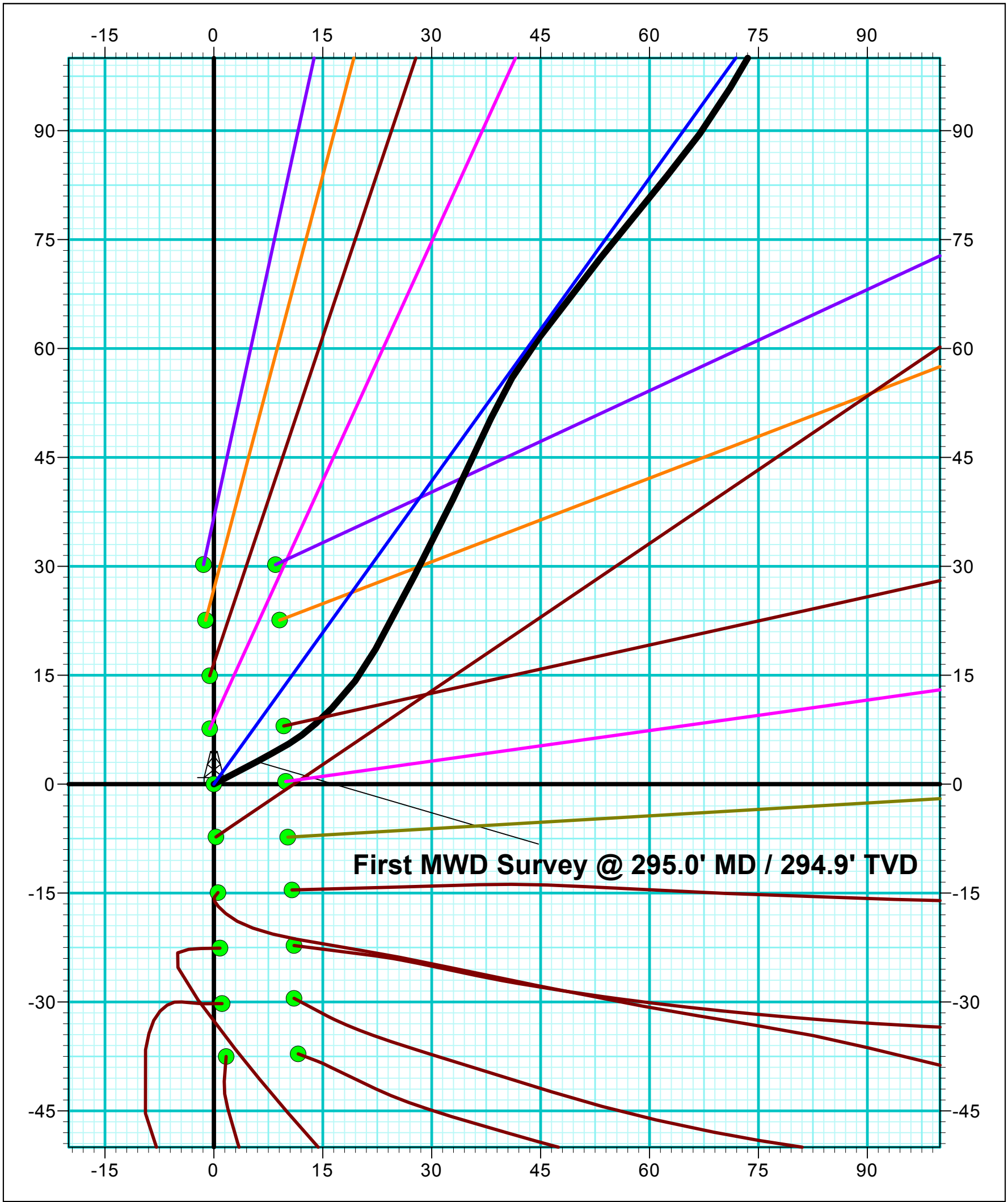
WELL DETAILS: BCU 0993-21-05W					
7257.0					
+N/-S	+E/-W	Northing	Easting	Latitude	Longitude
0.0	0.0	1529665.31	2354498.23	39.265423	-107.780158



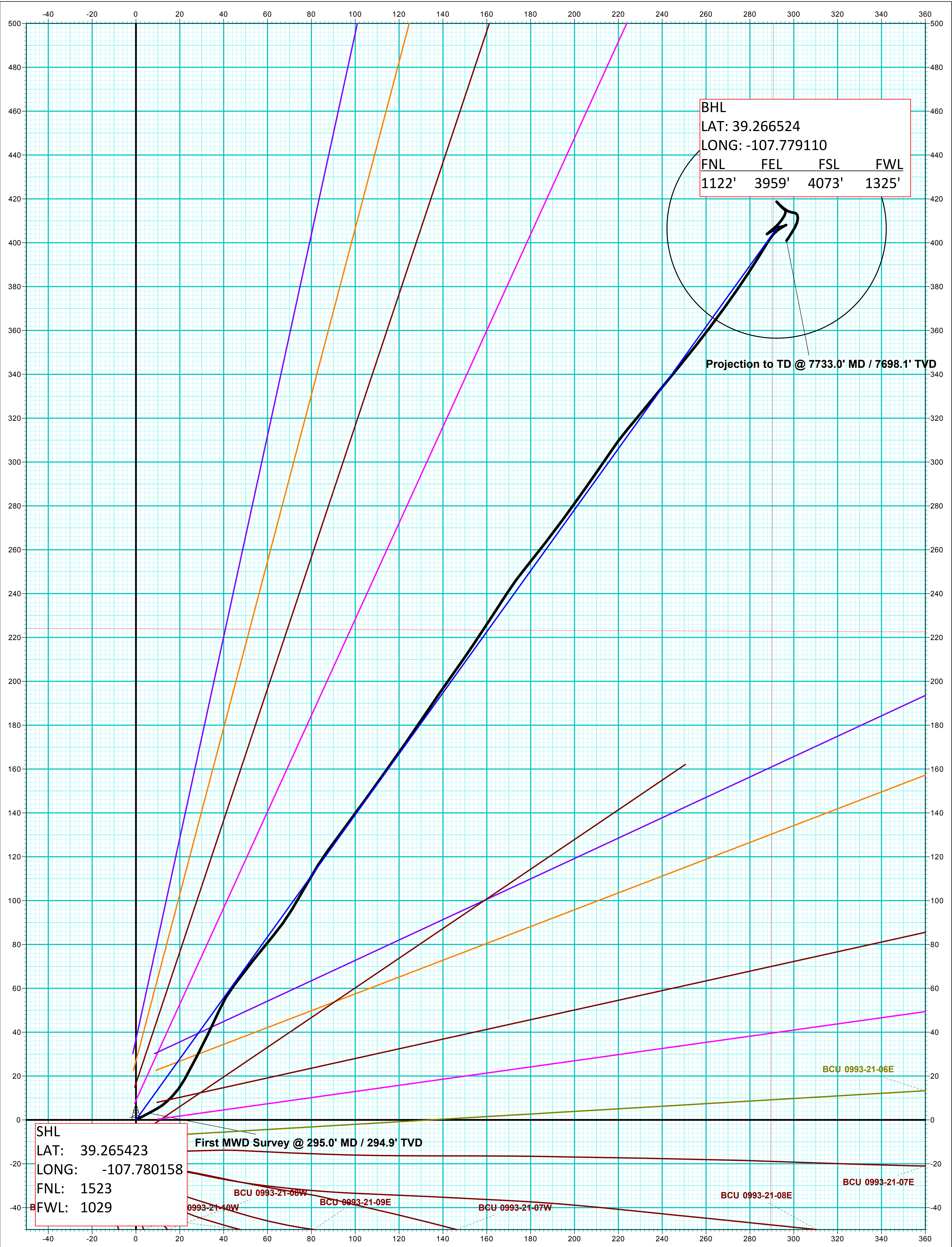
FORMATION TOP DETAILS		
TVDPath	MDPath	Formation
2581.0	2601.6	G' Sand
4431.0	4465.1	Ohio Creek
4631.0	4665.1	Williams Fork
5681.0	5715.1	TOG
6731.0	6765.1	Cameo
7391.0	7425.1	Base Cameo Coal
7431.0	7465.1	Rollins

Azimuths to True North
Magnetic North: 9.47°

Strength: 51381.9snT
Dip Angle: 65.42°
Date: 9/18/2018
Model: USER DEFINED



DESIGN TARGET DETAILS								
Name	TVD	+N/-S	+E/-W	Northing	Easting	Latitude	Longitude	Shape
PBHL - BCU 0993-21-05W	7681.0	406.5	292.2	1530064.33	2354800.52	39.266539	-107.779126	Circle (Radius: 50.0)



Vertical Section at 35.71° (200 usf/in)