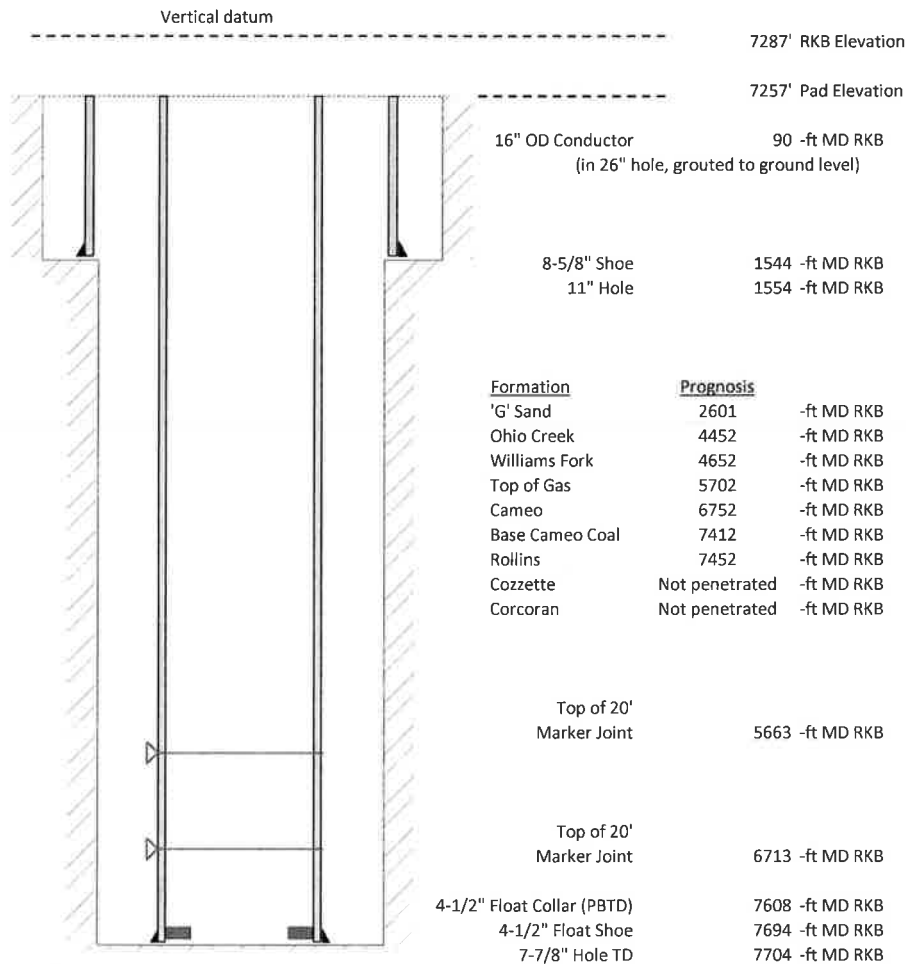


**Laramie Energy, LLC**  
**BCU 0993-21-06W**  
**Slot B-6**  
**H&P 522 (30-ft KB)**

API # : 05-077-10524-00  
 SW/4 NW/4 S13/T9S/R94W/6th PM  
 Mesa County, CO  
 Date of diagram : 9/27/2018



#### Cementing details

| 8-5/8" 24# Surface Csg    | Lead | Tail |
|---------------------------|------|------|
| Density (ppg)             | 12.3 | 12.8 |
| Volume (sx)               | 171  | 94   |
| Yield (cf/sx)             | 2.45 | 2.18 |
| Top (ft RKB)              | 30   | 1050 |
| Bottom (ft RKB)           | 1050 | 1544 |
| Returns (full or partial) | Full | Full |

| 4-1/2" 11.6# Prod Csg     | Lead | Tail |
|---------------------------|------|------|
| Density (ppg)             | 12.5 | 13.3 |
| Volume (sx)               | 639  | 350  |
| Yield (cf/sx)             | 1.94 | 1.73 |
| Est Top (ft RKB)          | 1050 | 5902 |
| Est Bottom (ft RKB)       | 5902 | 7694 |
| Returns (full or partial) | Full | Full |

| Displacement |
|--------------|
| 8.3 ppg      |
| 118 bbls     |

Other Remarks : Surface- 15 bbls cement to surface Production-20 bbls  
 spacer to surface