

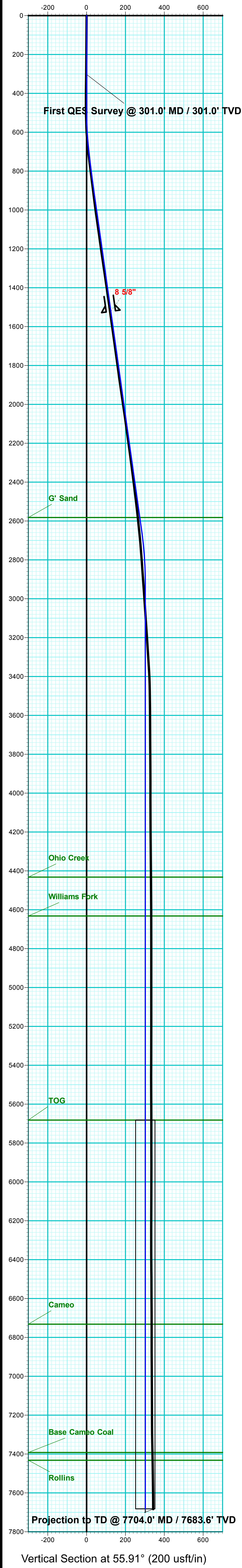
Company Name: Laramie Energy, LLC  
BCU 0993-21-06W  
Mesa County, CO  
Rig: H&P #522  
Created By: Will Jircik  
Date: 9/28/2018

BCU 0993-21-06W  
Mesa County, CO  
Q181277 & RM-181071  
Design #2



PROJECT DETAILS:		Mesa County, CO
Geodetic System:	US State Plane 1983	
Datum:	North American Datum 1983	
Ellipsoid:	GRS 1980	
Zone:	Colorado Central Zone	
System Datum:	Mean Sea Level	

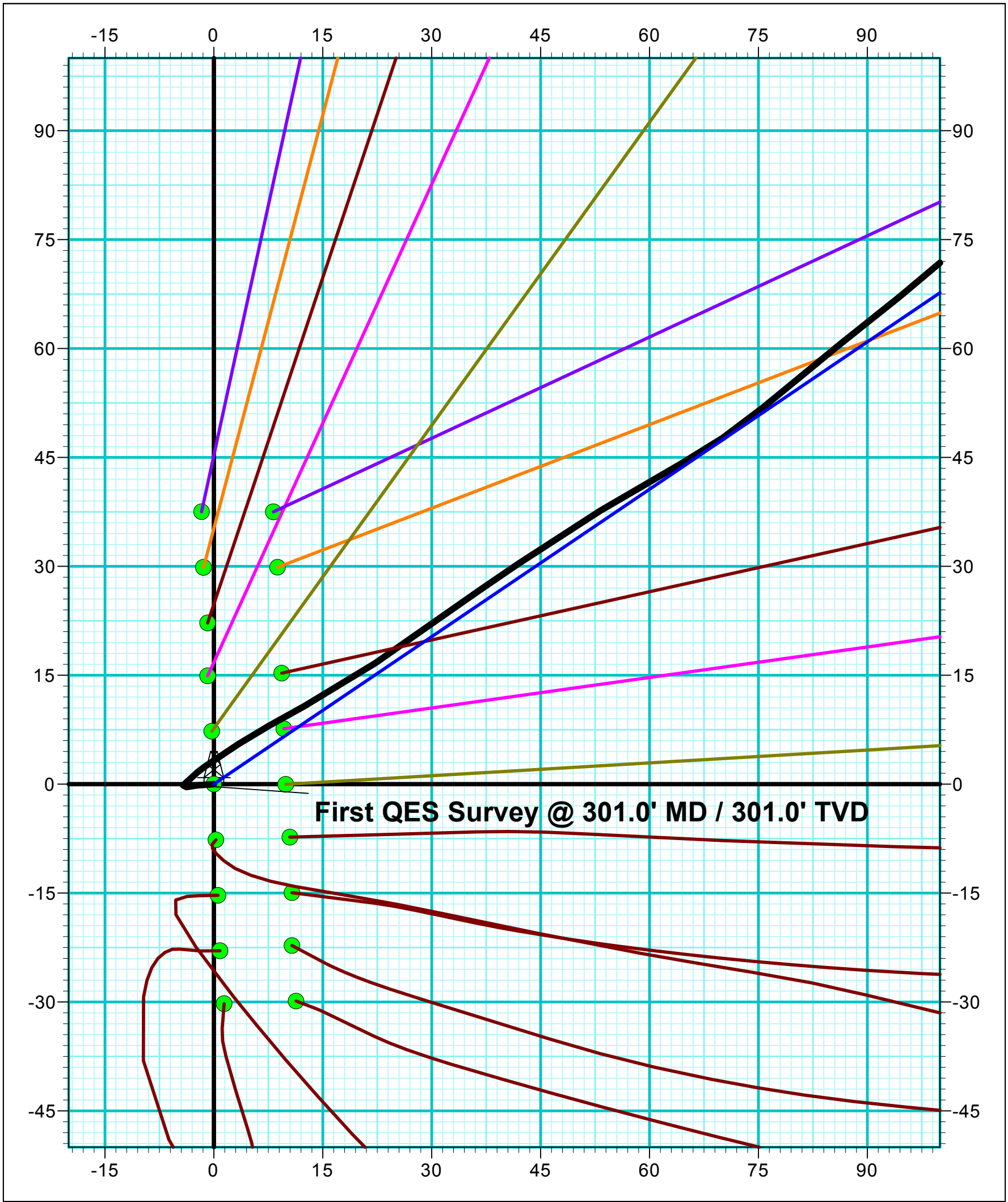
WELL DETAILS: BCU 0993-21-06W					
				7257.0	
+N/-S	+E/-W	Northing	Easting	Latitude	Longitude
0.0	0.0	1529658.03	2354498.33	39.265403	-107.780157



FORMATION TOP DETAILS		
TVDPath	MDPath	Formation
2582.0	2600.7	G' Sand
4432.0	4452.3	Ohio Creek
4632.0	4652.3	Williams Fork
5682.0	5702.3	TOG
6732.0	6752.3	Cameo
7392.0	7412.3	Base Cameo Coal
7432.0	7452.3	Rollins

Azimuths to True North  
Magnetic North: 9.47°

Strength: 51381.9snT  
Dip Angle: 65.42°  
Date: 9/18/2018  
Model: USER DEFINED



DESIGN TARGET DETAILS								
Name	TVD	+N/-S	+E/-W	Northing	Easting	Latitude	Longitude	Shape
PBHL - BCU 0993-21-06W	7682.0	169.4	250.3	1529821.06	2354752.78	39.265868	-107.779273	Circle (Radius: 50.0)

DESIGN ANNOTATIONS									
MD	Inc	Azi	TVD	+N/-S	+E/-W	VSect	Departure	Annotation	
500.0	0.00	0.00	500.0	0.0	0.0	0.0	0.0	KOP/ (Build 3.00°/100')	
766.7	8.00	55.91	765.9	10.4	15.4	18.6	18.6	EOB @ 8.00° Inc / 55.91° Azm	
2670.5	8.00	55.91	2651.1	159.0	234.9	283.6	283.6	Drop @ 3.00°/100'	
2937.3	0.00	0.00	2917.0	169.4	250.3	302.2	302.2	EOD @ Vertical	
7702.3	0.00	0.00	7682.0	169.4	250.3	302.2	302.2	TD @ 7702.3' MD / 7682.0' TVD	

