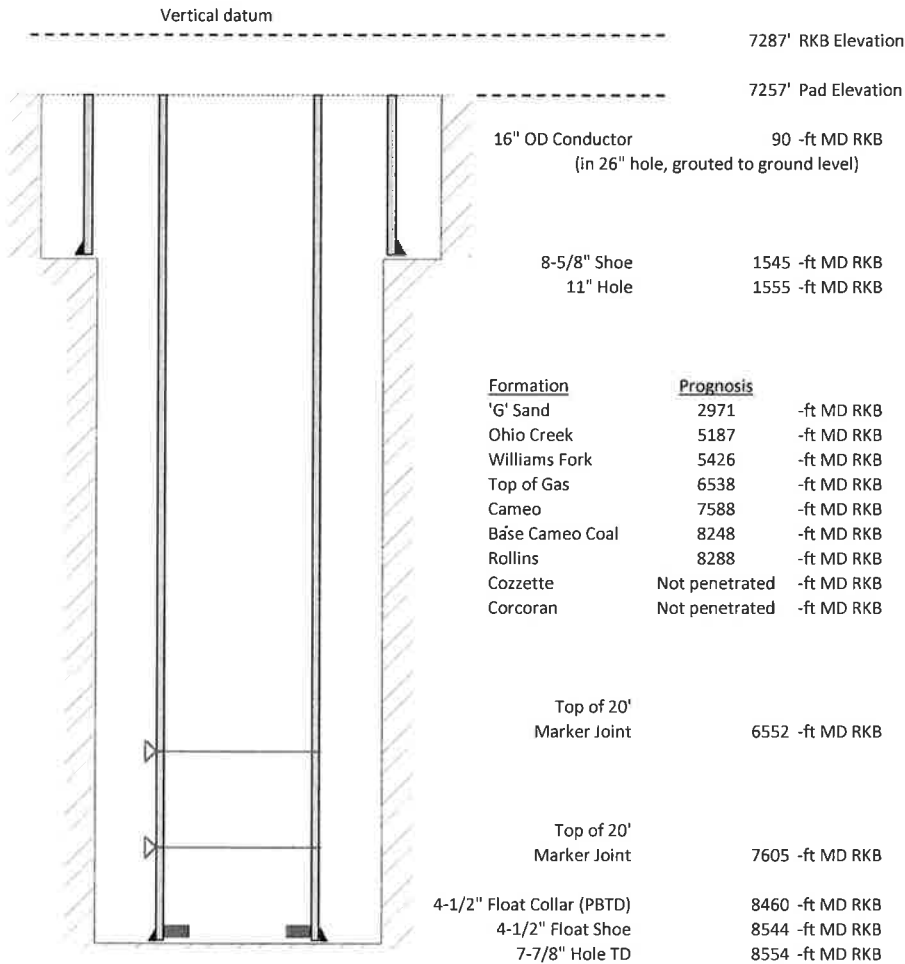


Laramie Energy, LLC
 BCU 0993-21-07E
 Slot A-7
 H&P 522 (30-ft KB)

API #: 05-077-10514-00
 SW/4 NW/4 S13/T9S/R94W/6th PM
 Mesa County, CO
 Date of diagram: 9/20/2018



Cementing details

8-5/8" 24# Surface Csg	Lead	Tail
Density (ppg)	12.3	12.8
Volume (sx)	171	94
Yield (cf/sx)	2.45	2.18
Top (ft RKB)	0	750
Bottom (ft RKB)	750	1545
Returns (full or partial)	Full	Full

4-1/2" 11.6# Prod Csg	Lead	Tail
Density (ppg)	12.5	13.3
Volume (sx)	801	379
Yield (cf/sx)	1.94	1.73
Est Top (ft RKB)	0	4864
Est Bottom (ft RKB)	4864	8544
Returns (full or partial)	Full	Full

Displacement
8.3 ppg
131 bbls

Other Remarks: 20 bbls cement back on surface job. 10 bbls cement back on production job.