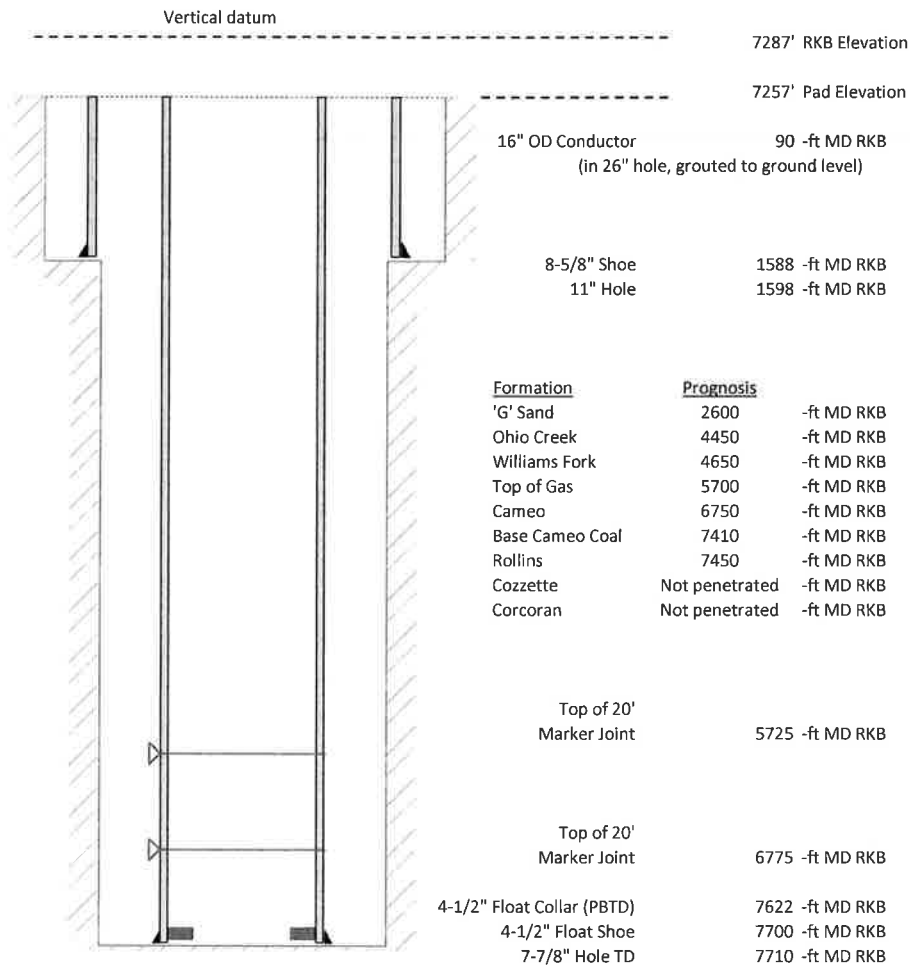


Laramie Energy, LLC
 BCU 0993-21-07W
 Slot B-7
 H&P 522 (30-ft KB)

API #: 05-077-10526-00
 SW/4 NW/4 S13/T9S/R94W/6th PM
 Mesa County, CO
 Date of diagram: 9/15/2018



Cementing details

8-5/8" 24# Surface Csg	Lead	Tail
Density (ppg)	12.3	12.8
Volume (sx)	171	94
Yield (cf/sx)	2.45	2.18
Top (ft RKB)	0	1030
Bottom (ft RKB)	1030	1588
Returns (full or partial)	Full	Full

4-1/2" 11.6# Prod Csg	Lead	Tail
Density (ppg)	12.5	13.3
Volume (sx)	639	350
Yield (cf/sx)	1.94	1.75
Est Top (ft RKB)	777	4657
Est Bottom (ft RKB)	4657	7700
Returns (full or partial)	Full	Full

Displacement
8.3 ppg
118 bbls

Other Remarks: 10 bbls cement back on surface job. 8 bbls spacer back on production job.