

NOBLE ENERGY, INC

Location: COLORADO Slot: SLOT#06 HURLEY H26-783(2366'FNL&1274'FWL,SEC.26)
 Field: WELD COUNTY (NOBLE NAD 83 GRID) Well: HURLEY H26-783
 Facility: SEC.26-T03N-R65W Wellbore: HURLEY H26-783 PWB

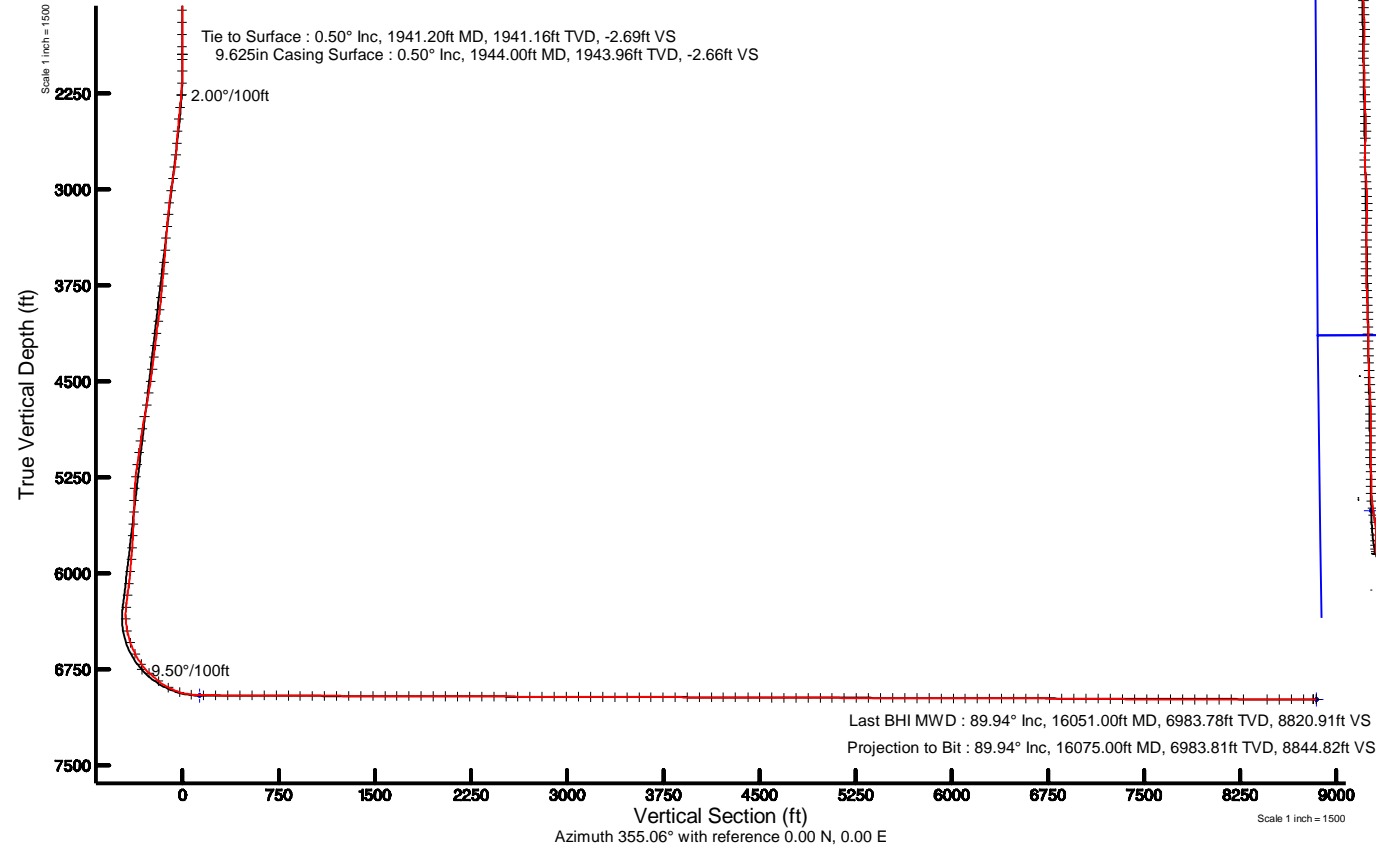
Plot reference wellpath is HURLEY H26-783 (REV.A.0) PWP	Grid System: NAD83 / Lambert Colorado SP, Northern Zone (501), US feet
True vertical depths are referenced to Rig (30KB) (RKB)	* = Wellpath was transformed from a different geodetic datum
Measured depths are referenced to Rig (30KB) (RKB)	North Reference: Grid north
Rig (30KB) (RKB) to Mean Sea Level: 4851 feet	Scale: True distance
Mean Sea Level to Ground level (At Slot: SLOT#06 HURLEY H26-783(2366'FNL&1274'FWL,SEC.26)): 0 feet	Depths are in feet
Coordinates are in feet referenced to Slot	Created by: guenaler on 2018-08-07
	Database: WA_DEN_Denver_Def

Survey Program

Start MD (ft)	End MD (ft)	Tool	Model	Log Name/Comment	Wellbore
30.00	16099.72	OWSG MWD rev2	OWSG MWD rev2 + IFR1 + Multi-Station Correction		HURLEY H26-783 PWB

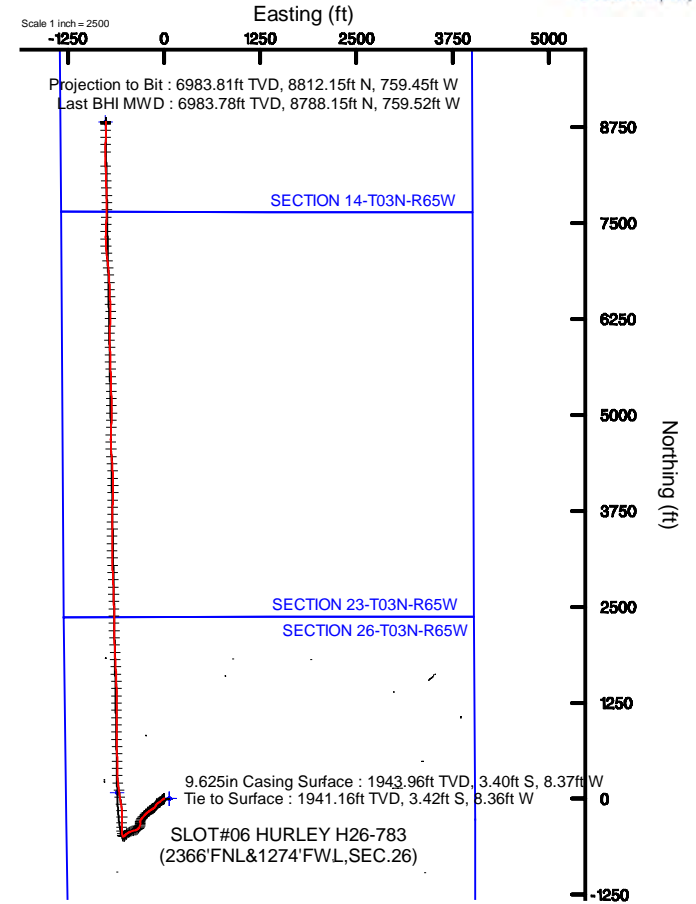
Comments

SURFACE LOCATION: SWNW
 40.19710N
 104.63565W
 API: 05-123-46764



Location Information

Facility Name	Grid East (US ft)	Grid North (US ft)	Latitude	Longitude		
SEC.26-T03N-R65W	3241514.116	1315823.443	40°11'49.560"N	104°38'07.476"W		
Slot	Local N (ft)	Local E (ft)	Grid East (US ft)	Grid North (US ft)	Latitude	Longitude
SLOT#06 HURLEY H26-783(2366'FNL&1274'FWL,SEC.26)	-0.65	-67.04	3241447.076	1315822.790	40°11'49.560"N	104°38'08.340"W
Rig (30KB) (RKB) to Ground level (At Slot: SLOT#06 HURLEY H26-783(2366'FNL&1274'FWL,SEC.26))				4851ft		
Mean Sea Level to Ground level (At Slot: SLOT#06 HURLEY H26-783(2366'FNL&1274'FWL,SEC.26))				0ft		
Rig (30KB) (RKB) to Mean Sea Level				4851ft		



REFERENCE WELLPATH IDENTIFICATION			
Operator	NOBLE ENERGY, INC	Slot	SLOT#06 HURLEY H26-783(2366'FNL&1274'FWL,SEC.26)
Area	COLORADO	Well	HURLEY H26-783
Field	WELD COUNTY (NOBLE NAD 83 GRID)	Wellbore	HURLEY H26-783 AWB
Facility	SEC.26-T03N-R65W		

REPORT SETUP INFORMATION			
Projection System	NAD83 / Lambert Colorado SP, Northern Zone (501), US feet	Software System	WellArchitect® 5.0
North Reference	Grid	User	Guenaler
Scale	0.999957	Report Generated	8/7/2018 at 4:21:50 PM
Convergence at slot	0.56° East	Database/Source file	WA_DEN_Denver_Defn/HURLEY_H26-783_AWP.xml

WELLPATH LOCATION						
	Local coordinates		Grid coordinates		Geographic coordinates	
	North[ft]	East[ft]	Easting[US ft]	Northing[US ft]	Latitude	Longitude
Slot Location	-0.65	-67.04	3241447.08	1315822.79	40°11'49.560"N	104°38'08.340"W
Facility Reference Pt			3241514.12	1315823.44	40°11'49.560"N	104°38'07.476"W
Field Reference Pt			3000000.00	4454105.15	48°46'34.315"N	105°30'00.000"W

WELLPATH DATUM			
Calculation method	Minimum curvature	Rig (30'KB) (RKB) to Facility Vertical Datum	4851.00ft
Horizontal Reference Pt	Slot	Rig (30'KB) (RKB) to Mean Sea Level	4851.00ft
Vertical Reference Pt	Rig (30'KB) (RKB)	Rig (30'KB) (RKB) to Ground Level at Slot (SLOT#06 HURLEY H26-783 (2366'FNL&1274'FWL,SEC.26))	4851.00ft
MD Reference Pt	Rig (30'KB) (RKB)	Section Origin	N 0.00, E 0.00 ft
Field Vertical Reference	Mean Sea Level	Section Azimuth	355.06°

REFERENCE WELLPATH IDENTIFICATION			
Operator	NOBLE ENERGY, INC	Slot	SLOT#06 HURLEY H26-783(2366'FNL&1274'FWL,SEC.26)
Area	COLORADO	Well	HURLEY H26-783
Field	WELD COUNTY (NOBLE NAD 83 GRID)	Wellbore	HURLEY H26-783 AWB
Facility	SEC.26-T03N-R65W		

WELLPATH DATA (172 stations)											
MD [ft]	Inclination [°]	Azimuth [°]	TVD [ft]	Vert Sect [ft]	North [ft]	East [ft]	Latitude	Longitude	DLS ["/100ft]	Comments	
0.00	0.000	265.730	0.00	0.00	0.00	0.00	40°11'49.560"N	104°38'08.340"W	0.00		
85.80	0.540	265.730	85.80	0.00	-0.03	-0.40	40°11'49.560"N	104°38'08.345"W	0.63		
181.33	0.590	207.580	181.32	-0.40	-0.50	-1.08	40°11'49.555"N	104°38'08.354"W	0.58		
275.71	0.710	258.930	275.70	-0.88	-1.04	-1.88	40°11'49.550"N	104°38'08.364"W	0.61		
370.27	0.760	254.100	370.25	-1.06	-1.33	-3.06	40°11'49.547"N	104°38'08.380"W	0.08		
464.90	0.450	253.900	464.88	-1.25	-1.60	-4.02	40°11'49.545"N	104°38'08.392"W	0.33		
559.42	0.200	231.960	559.39	-1.41	-1.81	-4.50	40°11'49.543"N	104°38'08.398"W	0.29		
653.85	0.070	296.280	653.82	-1.47	-1.88	-4.69	40°11'49.542"N	104°38'08.401"W	0.19		
748.40	0.050	55.740	748.37	-1.42	-1.83	-4.70	40°11'49.542"N	104°38'08.401"W	0.11		
843.08	0.200	179.900	843.05	-1.57	-1.98	-4.67	40°11'49.541"N	104°38'08.400"W	0.24		
937.60	0.130	240.030	937.57	-1.78	-2.19	-4.76	40°11'49.539"N	104°38'08.402"W	0.19		
1031.57	0.270	213.340	1031.54	-1.99	-2.43	-4.98	40°11'49.536"N	104°38'08.404"W	0.18		
1126.53	0.380	253.880	1126.50	-2.23	-2.71	-5.40	40°11'49.534"N	104°38'08.410"W	0.26		
1221.04	0.290	222.490	1221.01	-2.45	-2.97	-5.86	40°11'49.531"N	104°38'08.416"W	0.21		
1315.31	0.330	214.440	1315.28	-2.83	-3.37	-6.18	40°11'49.527"N	104°38'08.420"W	0.06		
1409.80	0.290	225.810	1409.77	-3.19	-3.76	-6.50	40°11'49.523"N	104°38'08.424"W	0.08		
1505.01	0.240	227.940	1504.98	-3.46	-4.06	-6.82	40°11'49.521"N	104°38'08.428"W	0.05		
1598.98	0.360	263.430	1598.95	-3.59	-4.23	-7.26	40°11'49.519"N	104°38'08.434"W	0.23		
1693.51	0.180	283.830	1693.47	-3.55	-4.23	-7.70	40°11'49.519"N	104°38'08.440"W	0.21		
1788.05	0.210	288.980	1788.01	-3.43	-4.13	-8.01	40°11'49.520"N	104°38'08.444"W	0.04		
1882.66	0.320	343.230	1882.62	-3.10	-3.83	-8.25	40°11'49.523"N	104°38'08.447"W	0.28		
1941.20	0.500	345.490	1941.16	-2.69	-3.42	-8.36	40°11'49.527"N	104°38'08.448"W	0.31	Tie to Surface	
1981.00	0.460	325.030	1980.96	-2.38	-3.12	-8.50	40°11'49.530"N	104°38'08.450"W	0.44		
2075.00	2.390	245.460	2074.93	-2.71	-3.63	-10.50	40°11'49.525"N	104°38'08.476"W	2.50		
2170.00	4.670	242.120	2169.74	-4.88	-6.26	-15.72	40°11'49.500"N	104°38'08.543"W	2.41		
2264.00	8.230	228.560	2263.14	-10.38	-12.50	-24.15	40°11'49.439"N	104°38'08.653"W	4.09		
2359.00	10.370	225.050	2356.89	-19.92	-23.05	-35.30	40°11'49.336"N	104°38'08.798"W	2.33		
2454.00	9.560	230.010	2450.45	-29.95	-34.16	-47.39	40°11'49.227"N	104°38'08.955"W	1.24		
2548.00	9.580	237.380	2543.15	-38.06	-43.39	-59.96	40°11'49.137"N	104°38'09.118"W	1.30		
2643.00	10.260	240.090	2636.73	-45.31	-51.87	-73.95	40°11'49.055"N	104°38'09.299"W	0.87		

REFERENCE WELLPATH IDENTIFICATION			
Operator	NOBLE ENERGY, INC	Slot	SLOT#06 HURLEY H26-783(2366'FNL&1274'FWL,SEC.26)
Area	COLORADO	Well	HURLEY H26-783
Field	WELD COUNTY (NOBLE NAD 83 GRID)	Wellbore	HURLEY H26-783 AWB
Facility	SEC.26-T03N-R65W		

WELLPATH DATA (172 stations)										
MD [ft]	Inclination [°]	Azimuth [°]	TVD [ft]	Vert Sect [ft]	North [ft]	East [ft]	Latitude	Longitude	DLS [°/100ft]	Comments
2737.00	10.200	240.290	2729.23	-52.33	-60.17	-88.44	40°11'48.974"N	104°38'09.487"W	0.07	
2832.00	10.390	217.120	2822.75	-62.22	-71.17	-100.92	40°11'48.866"N	104°38'09.649"W	4.33	
2926.00	10.060	196.780	2915.28	-76.14	-85.80	-108.41	40°11'48.723"N	104°38'09.748"W	3.84	
3020.00	10.110	210.330	3007.84	-90.51	-100.78	-114.95	40°11'48.575"N	104°38'09.834"W	2.52	
3115.00	10.080	224.550	3101.39	-102.72	-113.90	-124.99	40°11'48.446"N	104°38'09.965"W	2.62	
3209.00	10.120	234.440	3193.94	-112.27	-124.57	-137.48	40°11'48.342"N	104°38'10.127"W	1.84	
3303.00	9.960	236.460	3286.50	-120.37	-133.86	-150.97	40°11'48.252"N	104°38'10.302"W	0.41	
3398.00	9.970	238.230	3380.07	-128.01	-142.73	-164.81	40°11'48.165"N	104°38'10.482"W	0.32	
3493.00	9.970	239.780	3473.63	-135.23	-151.20	-178.91	40°11'48.083"N	104°38'10.664"W	0.28	
3587.00	10.060	234.690	3566.20	-142.86	-160.04	-192.64	40°11'47.997"N	104°38'10.843"W	0.95	
3682.00	10.060	233.630	3659.74	-151.38	-169.76	-206.09	40°11'47.902"N	104°38'11.017"W	0.19	
3776.00	9.880	232.550	3752.32	-160.00	-179.53	-219.11	40°11'47.807"N	104°38'11.186"W	0.28	
3871.00	10.210	232.350	3845.86	-168.93	-189.63	-232.24	40°11'47.709"N	104°38'11.357"W	0.35	
3965.00	10.220	221.240	3938.38	-179.20	-200.99	-244.34	40°11'47.597"N	104°38'11.514"W	2.09	
4059.00	9.960	210.460	4030.94	-191.61	-214.27	-253.96	40°11'47.467"N	104°38'11.639"W	2.03	
4154.00	10.000	223.410	4124.51	-203.79	-227.35	-263.79	40°11'47.339"N	104°38'11.768"W	2.36	
4248.00	10.120	230.460	4217.07	-213.90	-238.53	-275.77	40°11'47.229"N	104°38'11.924"W	1.32	
4343.00	10.000	213.640	4310.63	-225.09	-250.72	-286.78	40°11'47.110"N	104°38'12.067"W	3.08	
4437.00	10.090	219.560	4403.19	-237.34	-263.86	-296.54	40°11'46.981"N	104°38'12.194"W	1.10	
4532.00	10.170	210.600	4496.72	-250.10	-277.50	-306.11	40°11'46.847"N	104°38'12.319"W	1.66	
4626.00	10.310	189.380	4589.25	-265.01	-292.94	-311.71	40°11'46.695"N	104°38'12.394"W	3.99	
4721.00	9.610	169.020	4682.85	-281.14	-309.12	-311.59	40°11'46.535"N	104°38'12.394"W	3.76	
4815.00	9.920	182.180	4775.50	-296.98	-324.92	-310.40	40°11'46.379"N	104°38'12.381"W	2.39	
4910.00	9.820	187.480	4869.09	-313.01	-341.13	-311.77	40°11'46.219"N	104°38'12.400"W	0.96	
5005.00	7.500	197.260	4963.01	-326.67	-355.08	-314.66	40°11'46.082"N	104°38'12.439"W	2.88	
5099.00	10.660	208.880	5055.83	-339.57	-368.56	-320.68	40°11'45.949"N	104°38'12.519"W	3.87	
5194.00	11.940	221.540	5149.00	-353.64	-383.61	-331.44	40°11'45.801"N	104°38'12.659"W	2.93	
5289.00	12.000	233.420	5241.95	-365.59	-396.85	-345.89	40°11'45.672"N	104°38'12.847"W	2.59	
5383.00	11.960	248.090	5333.92	-373.56	-406.31	-362.78	40°11'45.580"N	104°38'13.066"W	3.23	
5478.00	9.840	257.280	5427.21	-377.54	-411.77	-379.84	40°11'45.528"N	104°38'13.286"W	2.88	

REFERENCE WELLPATH IDENTIFICATION			
Operator	NOBLE ENERGY, INC	Slot	SLOT#06 HURLEY H26-783(2366'FNL&1274'FWL,SEC.26)
Area	COLORADO	Well	HURLEY H26-783
Field	WELD COUNTY (NOBLE NAD 83 GRID)	Wellbore	HURLEY H26-783 AWB
Facility	SEC.26-T03N-R65W		

WELLPATH DATA (172 stations)										
MD [ft]	Inclination [°]	Azimuth [°]	TVD [ft]	Vert Sect [ft]	North [ft]	East [ft]	Latitude	Longitude	DLS [°/100ft]	Comments
5572.00	11.730	258.280	5519.55	-379.75	-415.48	-397.03	40°11'45.493"N	104°38'13.508"W	2.02	
5667.00	10.860	251.390	5612.71	-383.01	-420.30	-414.97	40°11'45.447"N	104°38'13.740"W	1.69	
5761.00	11.000	248.870	5705.00	-387.60	-426.36	-431.72	40°11'45.388"N	104°38'13.957"W	0.53	
5856.00	11.060	240.360	5798.26	-393.93	-434.14	-448.10	40°11'45.313"N	104°38'14.169"W	1.71	
5951.00	10.860	242.560	5891.52	-401.17	-442.77	-463.96	40°11'45.229"N	104°38'14.374"W	0.49	
6045.00	11.030	237.460	5983.82	-408.72	-451.68	-479.40	40°11'45.143"N	104°38'14.574"W	1.05	
6140.00	10.950	228.600	6077.08	-418.29	-462.54	-493.83	40°11'45.037"N	104°38'14.762"W	1.78	
6234.00	10.890	225.110	6169.38	-429.30	-474.71	-506.82	40°11'44.918"N	104°38'14.930"W	0.71	
6329.00	11.110	226.640	6262.63	-440.75	-487.33	-519.83	40°11'44.794"N	104°38'15.100"W	0.38	
6423.00	7.730	288.290	6355.56	-443.89	-491.57	-532.45	40°11'44.754"N	104°38'15.263"W	10.69	
6517.00	11.400	342.010	6448.41	-432.33	-480.73	-541.34	40°11'44.862"N	104°38'15.376"W	9.80	
6612.00	18.580	350.440	6540.13	-408.06	-456.84	-546.76	40°11'45.098"N	104°38'15.443"W	7.88	
6707.00	27.300	356.420	6627.54	-371.12	-420.10	-550.64	40°11'45.462"N	104°38'15.488"W	9.49	
6801.00	35.610	2.450	6707.68	-322.33	-371.14	-550.82	40°11'45.946"N	104°38'15.484"W	9.44	
6895.00	46.590	359.560	6778.41	-260.96	-309.47	-549.91	40°11'46.555"N	104°38'15.465"W	11.85	
6990.00	51.900	2.030	6840.41	-189.40	-237.55	-548.85	40°11'47.265"N	104°38'15.442"W	5.93	
7085.00	62.420	356.420	6891.89	-109.94	-157.90	-550.16	40°11'48.053"N	104°38'15.449"W	12.13	
7179.00	73.200	349.220	6927.38	-23.18	-71.77	-561.22	40°11'48.905"N	104°38'15.581"W	13.48	
7274.00	83.340	351.320	6946.67	69.39	19.79	-576.89	40°11'49.811"N	104°38'15.771"W	10.89	
7368.00	89.910	352.750	6952.20	163.04	112.66	-589.88	40°11'50.730"N	104°38'15.927"W	7.15	
7463.00	89.940	353.960	6952.32	258.00	207.02	-600.87	40°11'51.664"N	104°38'16.057"W	1.27	
7557.00	89.940	357.220	6952.42	351.98	300.73	-608.10	40°11'52.590"N	104°38'16.138"W	3.47	
7652.00	89.660	0.120	6952.75	446.78	395.70	-610.31	40°11'53.529"N	104°38'16.155"W	3.07	
7747.00	89.630	359.480	6953.34	541.46	490.69	-610.64	40°11'54.468"N	104°38'16.147"W	0.67	
7841.00	89.690	358.570	6953.90	635.23	584.68	-612.24	40°11'55.396"N	104°38'16.156"W	0.97	
7936.00	89.690	358.640	6954.41	730.05	679.65	-614.55	40°11'56.335"N	104°38'16.174"W	0.07	
8031.00	89.450	358.910	6955.13	824.84	774.62	-616.58	40°11'57.274"N	104°38'16.188"W	0.38	
8125.00	89.420	359.600	6956.05	918.59	868.61	-617.80	40°11'58.203"N	104°38'16.192"W	0.73	
8220.00	90.030	359.940	6956.51	1013.26	963.61	-618.18	40°11'59.141"N	104°38'16.185"W	0.74	
8314.00	89.750	0.050	6956.69	1106.92	1057.61	-618.19	40°12'00.070"N	104°38'16.174"W	0.32	

REFERENCE WELLPATH IDENTIFICATION			
Operator	NOBLE ENERGY, INC	Slot	SLOT#06 HURLEY H26-783(2366'FNL&1274'FWL,SEC.26)
Area	COLORADO	Well	HURLEY H26-783
Field	WELD COUNTY (NOBLE NAD 83 GRID)	Wellbore	HURLEY H26-783 AWB
Facility	SEC.26-T03N-R65W		

WELLPATH DATA (172 stations)										
MD [ft]	Inclination [°]	Azimuth [°]	TVD [ft]	Vert Sect [ft]	North [ft]	East [ft]	Latitude	Longitude	DLS [°/100ft]	Comments
8408.00	89.690	359.530	6957.15	1200.59	1151.61	-618.54	40°12'00.999"N	104°38'16.166"W	0.56	
8503.00	89.880	0.200	6957.51	1295.26	1246.60	-618.76	40°12'01.938"N	104°38'16.157"W	0.73	
8597.00	89.820	0.090	6957.75	1388.89	1340.60	-618.52	40°12'02.867"N	104°38'16.142"W	0.13	
8692.00	89.780	358.920	6958.08	1483.60	1435.60	-619.34	40°12'03.805"N	104°38'16.141"W	1.23	
8787.00	89.690	357.910	6958.52	1578.43	1530.56	-621.97	40°12'04.744"N	104°38'16.163"W	1.07	
8881.00	89.780	357.580	6958.96	1672.33	1624.49	-625.67	40°12'05.673"N	104°38'16.199"W	0.36	
8976.00	90.030	356.990	6959.11	1767.26	1719.38	-630.17	40°12'06.611"N	104°38'16.245"W	0.67	
9070.00	89.910	357.050	6959.16	1861.20	1813.25	-635.06	40°12'07.539"N	104°38'16.296"W	0.14	
9165.00	89.540	357.360	6959.62	1956.14	1908.14	-639.69	40°12'08.477"N	104°38'16.344"W	0.51	
9259.00	89.940	357.450	6960.05	2050.06	2002.04	-643.94	40°12'09.405"N	104°38'16.387"W	0.44	
9354.00	89.720	358.390	6960.33	2144.94	2096.98	-647.39	40°12'10.344"N	104°38'16.420"W	1.02	
9448.00	89.660	359.280	6960.84	2238.73	2190.95	-649.30	40°12'11.272"N	104°38'16.433"W	0.95	
9543.00	89.880	359.670	6961.22	2333.45	2285.95	-650.17	40°12'12.211"N	104°38'16.432"W	0.47	
9637.00	89.720	359.160	6961.55	2427.17	2379.94	-651.13	40°12'13.140"N	104°38'16.432"W	0.57	
9732.00	89.780	359.200	6961.96	2521.93	2474.93	-652.49	40°12'14.079"N	104°38'16.438"W	0.08	
9826.00	89.720	358.600	6962.37	2615.72	2568.91	-654.30	40°12'15.008"N	104°38'16.450"W	0.64	
9920.00	89.720	358.450	6962.83	2709.54	2662.88	-656.72	40°12'15.936"N	104°38'16.469"W	0.16	
10015.00	89.720	357.810	6963.29	2804.40	2757.83	-659.82	40°12'16.875"N	104°38'16.497"W	0.67	
10110.00	89.780	357.330	6963.71	2899.31	2852.74	-663.85	40°12'17.813"N	104°38'16.537"W	0.51	
10204.00	89.850	357.160	6964.01	2993.24	2946.63	-668.36	40°12'18.741"N	104°38'16.583"W	0.20	
10299.00	89.820	358.400	6964.29	3088.13	3041.56	-672.04	40°12'19.680"N	104°38'16.619"W	1.31	
10393.00	89.780	359.000	6964.61	3181.94	3135.53	-674.18	40°12'20.609"N	104°38'16.635"W	0.64	
10488.00	89.720	359.730	6965.03	3276.67	3230.53	-675.23	40°12'21.547"N	104°38'16.636"W	0.77	
10583.00	89.850	0.230	6965.39	3371.32	3325.53	-675.26	40°12'22.486"N	104°38'16.625"W	0.54	
10677.00	89.750	0.220	6965.71	3464.94	3419.52	-674.89	40°12'23.415"N	104°38'16.608"W	0.11	
10772.00	89.910	0.440	6966.00	3559.54	3514.52	-674.35	40°12'24.354"N	104°38'16.589"W	0.29	
10867.00	89.690	0.660	6966.33	3654.10	3609.52	-673.43	40°12'25.292"N	104°38'16.566"W	0.33	
10961.00	89.820	0.690	6966.73	3747.65	3703.51	-672.33	40°12'26.221"N	104°38'16.540"W	0.14	
11056.00	89.720	1.560	6967.11	3842.12	3798.49	-670.46	40°12'27.159"N	104°38'16.504"W	0.92	
11150.00	89.720	1.550	6967.57	3935.51	3892.45	-667.91	40°12'28.088"N	104°38'16.459"W	0.01	

REFERENCE WELLPATH IDENTIFICATION			
Operator	NOBLE ENERGY, INC	Slot	SLOT#06 HURLEY H26-783(2366'FNL&1274'FWL,SEC.26)
Area	COLORADO	Well	HURLEY H26-783
Field	WELD COUNTY (NOBLE NAD 83 GRID)	Wellbore	HURLEY H26-783 AWB
Facility	SEC.26-T03N-R65W		

WELLPATH DATA (172 stations)										
MD [ft]	Inclination [°]	Azimuth [°]	TVD [ft]	Vert Sect [ft]	North [ft]	East [ft]	Latitude	Longitude	DLS [°/100ft]	Comments
11245.00	89.780	0.790	6967.98	4029.97	3987.43	-665.97	40°12'29.026"N	104°38'16.422"W	0.80	
11339.00	89.750	359.640	6968.37	4123.59	4081.43	-665.62	40°12'29.955"N	104°38'16.406"W	1.22	
11434.00	89.910	359.140	6968.65	4218.32	4176.42	-666.63	40°12'30.893"N	104°38'16.407"W	0.55	
11529.00	89.910	357.130	6968.80	4313.17	4271.37	-669.72	40°12'31.832"N	104°38'16.435"W	2.12	
11624.00	89.880	354.840	6968.98	4408.16	4366.13	-676.37	40°12'32.769"N	104°38'16.509"W	2.41	
11718.00	89.720	355.470	6969.30	4502.15	4459.79	-684.31	40°12'33.695"N	104°38'16.599"W	0.69	
11812.00	89.780	356.840	6969.71	4596.13	4553.58	-690.61	40°12'34.623"N	104°38'16.669"W	1.46	
11907.00	89.450	358.820	6970.35	4691.02	4648.50	-694.21	40°12'35.561"N	104°38'16.703"W	2.11	
12001.00	89.820	1.640	6970.95	4784.62	4742.49	-693.83	40°12'36.490"N	104°38'16.687"W	3.03	
12096.00	89.780	3.410	6971.28	4878.81	4837.39	-689.65	40°12'37.427"N	104°38'16.621"W	1.86	
12191.00	89.750	2.660	6971.67	4972.89	4932.26	-684.62	40°12'38.364"N	104°38'16.544"W	0.79	
12285.00	89.780	0.000	6972.06	5066.32	5026.22	-682.44	40°12'39.292"N	104°38'16.504"W	2.83	
12380.00	89.780	359.060	6972.42	5161.03	5121.22	-683.22	40°12'40.231"N	104°38'16.502"W	0.99	
12474.00	89.780	358.490	6972.78	5254.83	5215.20	-685.23	40°12'41.160"N	104°38'16.517"W	0.61	
12569.00	89.850	358.400	6973.09	5349.66	5310.16	-687.80	40°12'42.099"N	104°38'16.538"W	0.12	
12664.00	89.750	358.400	6973.42	5444.50	5405.12	-690.46	40°12'43.037"N	104°38'16.560"W	0.11	
12759.00	89.750	358.360	6973.84	5539.34	5500.08	-693.14	40°12'43.976"N	104°38'16.583"W	0.04	
12853.00	89.750	358.080	6974.25	5633.20	5594.04	-696.06	40°12'44.904"N	104°38'16.609"W	0.30	
12948.00	89.720	358.620	6974.69	5728.04	5689.00	-698.80	40°12'45.843"N	104°38'16.632"W	0.57	
13042.00	89.820	358.190	6975.06	5821.88	5782.96	-701.41	40°12'46.772"N	104°38'16.654"W	0.47	
13137.00	89.850	357.050	6975.34	5916.78	5877.88	-705.36	40°12'47.710"N	104°38'16.693"W	1.20	
13231.00	89.540	358.540	6975.84	6010.67	5971.80	-708.98	40°12'48.639"N	104°38'16.728"W	1.62	
13326.00	89.820	2.490	6976.37	6105.22	6066.78	-708.12	40°12'49.577"N	104°38'16.705"W	4.17	
13420.00	89.820	3.510	6976.66	6198.32	6160.65	-703.20	40°12'50.504"N	104°38'16.630"W	1.09	
13515.00	90.060	2.020	6976.76	6292.46	6255.53	-698.62	40°12'51.441"N	104°38'16.559"W	1.59	
13609.00	89.940	359.390	6976.76	6385.99	6349.52	-697.46	40°12'52.370"N	104°38'16.532"W	2.80	
13703.00	90.400	356.770	6976.48	6479.85	6443.46	-700.61	40°12'53.298"N	104°38'16.561"W	2.83	
13798.00	89.660	357.520	6976.43	6574.79	6538.34	-705.34	40°12'54.236"N	104°38'16.610"W	1.11	
13893.00	89.750	358.770	6976.92	6669.65	6633.28	-708.42	40°12'55.175"N	104°38'16.638"W	1.32	
13987.00	89.720	356.610	6977.36	6763.54	6727.20	-712.21	40°12'56.103"N	104°38'16.675"W	2.30	

REFERENCE WELLPATH IDENTIFICATION			
Operator	NOBLE ENERGY, INC	Slot	SLOT#06 HURLEY H26-783(2366'FNL&1274'FWL,SEC.26)
Area	COLORADO	Well	HURLEY H26-783
Field	WELD COUNTY (NOBLE NAD 83 GRID)	Wellbore	HURLEY H26-783 AWB
Facility	SEC.26-T03N-R65W		

WELLPATH DATA (172 stations)										
MD [ft]	Inclination [°]	Azimuth [°]	TVD [ft]	Vert Sect [ft]	North [ft]	East [ft]	Latitude	Longitude	DLS [°/100ft]	Comments
14082.00	89.660	355.960	6977.87	6858.52	6822.00	-718.36	40°12'57.041"N	104°38'16.742"W	0.69	
14176.00	89.880	354.960	6978.25	6952.52	6915.70	-725.80	40°12'57.967"N	104°38'16.826"W	1.09	
14271.00	89.780	352.070	6978.53	7047.47	7010.09	-736.53	40°12'58.901"N	104°38'16.953"W	3.04	
14366.00	89.660	353.920	6979.00	7142.40	7104.37	-748.12	40°12'59.834"N	104°38'17.090"W	1.95	
14460.00	89.380	355.640	6979.78	7236.40	7197.97	-756.67	40°13'00.760"N	104°38'17.189"W	1.85	
14555.00	88.210	359.130	6981.78	7331.28	7292.84	-761.00	40°13'01.697"N	104°38'17.233"W	3.87	
14650.00	90.060	2.790	6983.22	7425.75	7387.79	-759.41	40°13'02.636"N	104°38'17.201"W	4.32	
14744.00	89.820	3.350	6983.31	7518.83	7481.66	-754.38	40°13'03.563"N	104°38'17.124"W	0.65	
14838.00	89.630	2.280	6983.77	7611.97	7575.54	-749.76	40°13'04.490"N	104°38'17.053"W	1.16	
14933.00	89.850	1.540	6984.20	7706.29	7670.49	-746.59	40°13'05.428"N	104°38'17.000"W	0.81	
15028.00	89.780	359.850	6984.50	7800.82	7765.48	-745.44	40°13'06.366"N	104°38'16.973"W	1.78	
15122.00	90.060	357.710	6984.63	7894.62	7859.45	-747.44	40°13'07.295"N	104°38'16.987"W	2.30	
15217.00	90.000	357.010	6984.59	7989.54	7954.35	-751.82	40°13'08.233"N	104°38'17.032"W	0.74	
15312.00	89.910	357.990	6984.66	8084.45	8049.26	-755.96	40°13'09.171"N	104°38'17.073"W	1.04	
15406.00	90.000	358.090	6984.73	8178.33	8143.20	-759.18	40°13'10.100"N	104°38'17.103"W	0.14	
15500.00	90.120	359.090	6984.64	8272.15	8237.17	-761.49	40°13'11.029"N	104°38'17.121"W	1.07	
15690.00	89.940	0.570	6984.54	8461.48	8427.17	-762.05	40°13'12.906"N	104°38'17.104"W	0.78	
15784.00	89.910	0.390	6984.66	8555.06	8521.16	-761.27	40°13'13.835"N	104°38'17.082"W	0.19	
15879.00	90.520	0.740	6984.30	8649.62	8616.16	-760.33	40°13'14.774"N	104°38'17.058"W	0.74	
15973.00	90.090	0.050	6983.80	8743.22	8710.15	-759.68	40°13'15.702"N	104°38'17.038"W	0.86	
16051.00	89.940	0.180	6983.78	8820.91	8788.15	-759.52	40°13'16.473"N	104°38'17.027"W	0.25	Last BHI MWD
16075.00	89.940	0.180	6983.81	8844.82	8812.15	-759.45	40°13'16.710"N	104°38'17.023"W	0.00	Projection to Bit

REFERENCE WELLPATH IDENTIFICATION			
Operator	NOBLE ENERGY, INC	Slot	SLOT#06 HURLEY H26-783(2366'FNL&1274'FWL,SEC.26)
Area	COLORADO	Well	HURLEY H26-783
Field	WELD COUNTY (NOBLE NAD 83 GRID)	Wellbore	HURLEY H26-783 AWB
Facility	SEC.26-T03N-R65W		

HOLE & CASING SECTIONS - Ref Wellbore: HURLEY H26-783 AWB Ref Wellpath: HURLEY H26-783 AWP									
String/Diameter	Start MD [ft]	End MD [ft]	Interval [ft]	Start TVD [ft]	End TVD [ft]	Start N/S [ft]	Start E/W [ft]	End N/S [ft]	End E/W [ft]
13.5in Open Hole	30.00	1944.00	1914.00	30.00	1943.96	0.00	-0.05	-3.40	-8.37
9.625in Casing Surface	30.00	1944.00	1914.00	30.00	1943.96	0.00	-0.05	-3.40	-8.37
8.5in Open Hole	1944.00	16075.00	14131.00	1943.96	6983.81	-3.40	-8.37	8812.15	-759.45
5.5in Casing Production	30.00	16075.00	16045.00	30.00	6983.81	0.00	-0.05	8812.15	-759.45

TARGETS								
Name	TVD [ft]	North [ft]	East [ft]	Grid East [US ft]	Grid North [US ft]	Latitude	Longitude	Shape
SECTION 14-T03N-R65W	-1.00	0.65	67.04	3241514.12	1315823.44	40°11'49.560"N	104°38'07.476"W	polygon
SECTION 23-T03N-R65W	-1.00	0.65	67.04	3241514.12	1315823.44	40°11'49.560"N	104°38'07.476"W	polygon
SECTION 26-T03N-R65W	-1.00	0.65	67.04	3241514.12	1315823.44	40°11'49.560"N	104°38'07.476"W	polygon
HURLEY H26-783 LANDING POINT	6954.00	80.00	-610.00	3240837.10	1315902.79	40°11'50.409"N	104°38'16.191"W	point
HURLEY H26-783 REV-1 BHL(1170'FSL&585'FWL,SEC.14)	6984.49	8812.71	-761.74	3240685.37	1324635.10	40°13'16.716"N	104°38'17.052"W	point

WELLPATH COMPOSITION - Ref Wellbore: HURLEY H26-783 AWB Ref Wellpath: HURLEY H26-783 AWP				
Start MD [ft]	End MD [ft]	Positional Uncertainty Model	Log Name/Comment	Wellbore
0.00	1941.20	Gyrodatta standard - Drop gyro or Multi-shot	3rd Party Surface Gyro <85.8'-1941.2'>	HURLEY H26-783 AWB
1941.20	16051.00	OWSG MWD rev2 + IFR1 + Multi-Station Correction	BHGE/ATC OWSG MWD rev2+IFR+MSA <1981'-16051'>	HURLEY H26-783 AWB
16051.00	16075.00	Blind Drilling (std)	Projection to bit	HURLEY H26-783 AWB

REFERENCE WELLPATH IDENTIFICATION			
Operator	NOBLE ENERGY, INC	Slot	SLOT#06 HURLEY H26-783(2366'FNL&1274'FWL,SEC.26)
Area	COLORADO	Well	HURLEY H26-783
Field	WELD COUNTY (NOBLE NAD 83 GRID)	Wellbore	HURLEY H26-783 AWB
Facility	SEC.26-T03N-R65W		

WELLPATH COMMENTS				
MD [ft]	Inclination [°]	Azimuth [°]	TVD [ft]	Comment
1941.20	0.500	345.490	1941.16	Tie to Surface
16051.00	89.940	0.180	6983.78	Last BHI MWD
16075.00	89.940	0.180	6983.81	Projection to Bit

COMMENTS
Wellpath general comments SURFACE LOCATION: SWNW 40.19710N 104.63565W API: 05-123-46764