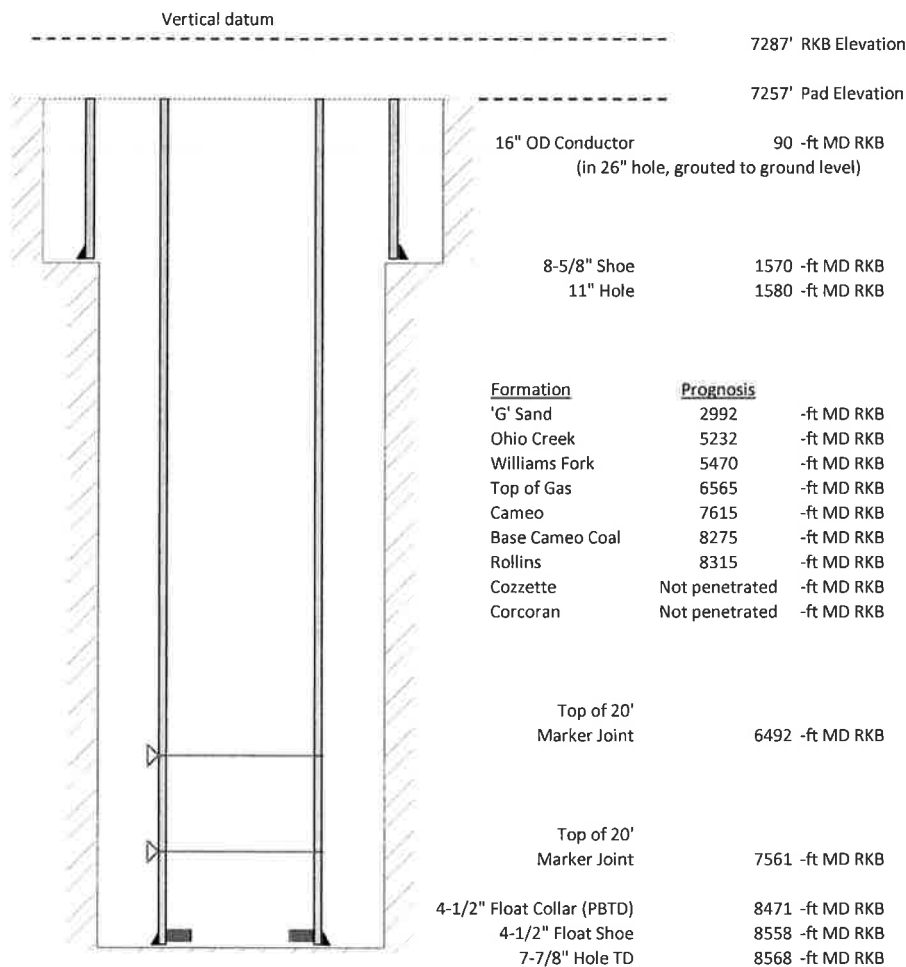


Laramie Energy, LLC
BCU 0993-21-08E
Slot A-8
H&P 522 (30-ft KB)

API # : 05-077-10516-00
 SW/4 NW/4 S13/T9S/R94W/6th PM
 Mesa County, CO
 Date of diagram : 9/8/2018



Cementing details

8-5/8" 24# Surface Csg	Lead	Tail
Density (ppg)	12.3	12.8
Volume (sx)	171	94
Yield (cf/sx)	2.45	2.18
Top (ft RKB)	0	1030
Bottom (ft RKB)	1030	1570
Returns (full or partial)	Full	Full

4-1/2" 11.6# Prod Csg	Lead	Tail
Density (ppg)	12.5	13.3
Volume (sx)	767	350
Yield (cf/sx)	1.94	1.73
Est Top (ft RKB)	1030	3665
Est Bottom (ft RKB)	6365	8558
Returns (full or partial)	Full	Full

Displacement
8.3 ppg
132 bbls

Other Remarks : 20 bbls cement to surface onsurface job. Production- No spacer to surface.