

NOBLE ENERGY, INC

Location: COLORADO Slot: SLOT#04 HURLEY H26-768(2366°FNL&1319°FWL,SEC.26)
Field: WELD COUNTY (NOBLE NAD 83 GRID) Well: HURLEY H26-768
Facility: SEC.26-T03N-R65W Wellbore: HURLEY H26-768 PWB

Plot reference wellpath is HURLEY H26-768 (REV-A.0) PWP	Grid System: NAD83 / Lambert Colorado SP, Northern Zone (501), US feet
True vertical depths are referenced to Rig (30°KB) (RKB)	North Reference: Grid north
Measured depths are referenced to Rig (30°KB) (RKB)	Scale: True distance
Rig (30°KB) (RKB) to Mean Sea Level: 4852 feet	Depths are in feet
Mean Sea Level to Ground level (At Slot: SLOT#04 HURLEY H26-768(2366°FNL&1319°FWL,SEC.26)): 0 feet	Created by: amuntime on 2018-06-15
Coordinates are in feet referenced to Slot	Database: WA DENVER

Survey Program

Start MD (ft)	End MD (ft)	Tool	Model	Log Name/Comment	Wellbore
30.00	16145.78	OWSG MWD rev2	OWSG MWD rev2 + IFR1 + Multi-Station Correction		HURLEY H26-768 PWB

Comments

SURFACE LOCATION: SWNW

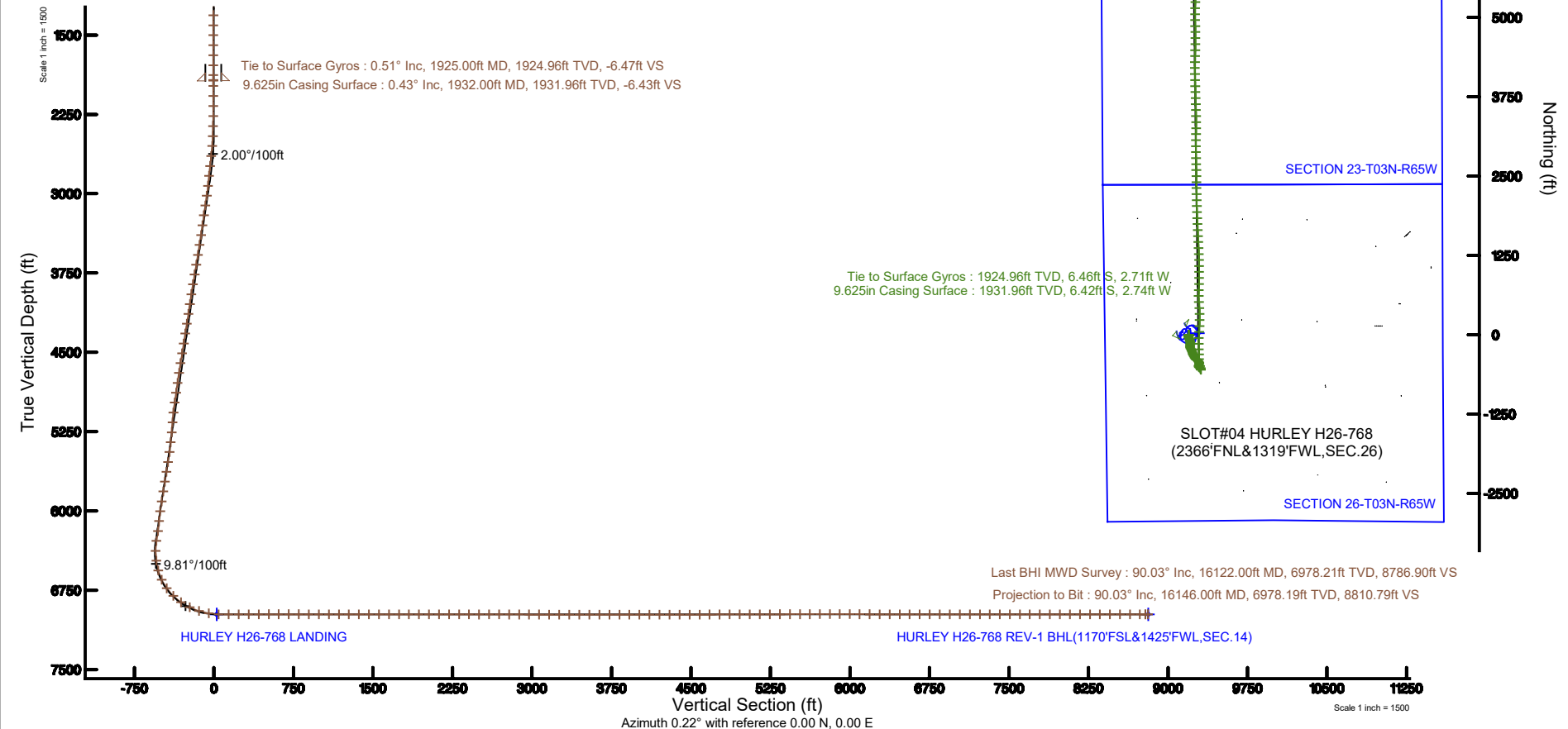
40.1971N

104.63549W

API: 05-123-46766

Location Information

Facility Name			Grid East (US ft)	Grid North (US ft)	Latitude	Longitude
SEC.26-T03N-R65W			3241514.116	1315823.443	40°11'49.560"N	104°38'07.476"W
Slot	Local N (ft)	Local E (ft)	Grid East (US ft)	Grid North (US ft)	Latitude	Longitude
SLOT#04 HURLEY H26-768(2366°FNL&1319°FWL,SEC.26)	-0.22	-22.35	3241491.789	1315823.225	40°11'49.560"N	104°38'07.764"W
Rig (30°KB) to Ground level (At Slot: SLOT#04 HURLEY H26-768(2366°FNL&1319°FWL,SEC.26))					4852#	
Mean Sea Level to Ground level (At Slot: SLOT#04 HURLEY H26-768(2366°FNL&1319°FWL,SEC.26))					0#	
Rig (30°KB) to Mean Sea Level					4852#	





Actual Wellpath Report

HURLEY H26-768 AWP

Page n of nn



REFERENCE WELLPATH IDENTIFICATION			
Operator	NOBLE ENERGY, INC	Slot	SLOT#04 HURLEY H26-768(2366'FNL&1319'FWL,SEC.26)
Area	COLORADO	Well	HURLEY H26-768
Field	WELD COUNTY (NOBLE NAD 83 GRID)	Wellbore	HURLEY H26-768 AWP
Facility	SEC.26-T03N-R65W		

REPORT SETUP INFORMATION			
Projection System	NAD83 / Lambert Colorado SP, Northern Zone (501), US feet	Software System	WellArchitect® 5.1
North Reference	Grid	User	Amuntime
Scale	0.999957	Report Generated	6/15/2018 at 2:04:11 PM
Convergence at slot	0.56° East	Database/Source file	WA DENVER/HURLEY_H26-768_AWP.xml

WELLPATH LOCATION						
	Local coordinates		Grid coordinates		Geographic coordinates	
	North[ft]	East[ft]	Easting[US ft]	Northing[US ft]	Latitude	Longitude
Slot Location	-0.22	-22.35	3241491.77	1315823.23	40°11'49.560"N	104°38'07.764"W
Facility Reference Pt			3241514.12	1315823.44	40°11'49.560"N	104°38'07.476"W
Field Reference Pt			3000000.00	4454105.15	48°46'34.315"N	105°30'00.000"W

WELLPATH DATUM			
Calculation method	Minimum curvature	Rig (30'KB) (RKB) to Facility Vertical Datum	4852.00ft
Horizontal Reference Pt	Slot	Rig (30'KB) (RKB) to Mean Sea Level	4852.00ft
Vertical Reference Pt	Rig (30'KB) (RKB)	Rig (30'KB) (RKB) to Ground Level at Slot (SLOT#04 HURLEY H26-768 (2366'FNL&1319'FWL,SEC.26))	4852.00ft
MD Reference Pt	Rig (30'KB) (RKB)	Section Origin	N 0.00, E 0.00 ft
Field Vertical Reference	Mean Sea Level	Section Azimuth	0.22°



Actual Wellpath Report

HURLEY H26-768 AWP

Page n of nn



REFERENCE WELLPATH IDENTIFICATION			
Operator	NOBLE ENERGY, INC	Slot	SLOT#04 HURLEY H26-768(2366'FNL&1319'FWL,SEC.26)
Area	COLORADO	Well	HURLEY H26-768
Field	WELD COUNTY (NOBLE NAD 83 GRID)	Wellbore	HURLEY H26-768 AWB
Facility	SEC.26-T03N-R65W		

WELLPATH DATA (174 stations)

MD [ft]	Inclination [°]	Azimuth [°]	TVD [ft]	Vert Sect [ft]	North [ft]	East [ft]	Latitude	Longitude	DLS [°/100ft]	Comments
0.00	0.000	67.170	0.00	0.00	0.00	0.00	40°11'49.560"N	104°38'07.764"W	0.00	
83.00	0.100	67.170	83.00	0.03	0.03	0.07	40°11'49.560"N	104°38'07.763"W	0.12	
181.00	0.300	218.950	181.00	-0.14	-0.14	-0.02	40°11'49.559"N	104°38'07.764"W	0.40	
273.00	0.470	184.920	273.00	-0.70	-0.70	-0.20	40°11'49.553"N	104°38'07.767"W	0.30	
368.00	0.210	173.660	368.00	-1.26	-1.26	-0.21	40°11'49.548"N	104°38'07.767"W	0.28	
462.00	0.540	194.610	461.99	-1.86	-1.86	-0.31	40°11'49.542"N	104°38'07.768"W	0.37	
557.00	0.370	228.350	556.99	-2.50	-2.50	-0.65	40°11'49.535"N	104°38'07.773"W	0.33	
651.00	0.530	172.280	650.99	-3.14	-3.13	-0.82	40°11'49.529"N	104°38'07.775"W	0.47	
745.00	0.600	98.820	744.98	-3.64	-3.64	-0.27	40°11'49.524"N	104°38'07.768"W	0.72	
840.00	0.190	335.530	839.98	-3.57	-3.57	0.15	40°11'49.525"N	104°38'07.762"W	0.76	
934.00	0.180	103.970	933.98	-3.46	-3.47	0.23	40°11'49.526"N	104°38'07.761"W	0.35	
1029.00	0.120	234.670	1028.98	-3.56	-3.56	0.30	40°11'49.525"N	104°38'07.761"W	0.29	
1123.00	0.300	172.410	1122.98	-3.86	-3.86	0.25	40°11'49.522"N	104°38'07.761"W	0.28	
1218.00	0.390	175.990	1217.98	-4.43	-4.43	0.30	40°11'49.516"N	104°38'07.761"W	0.10	
1312.00	0.180	199.630	1311.98	-4.89	-4.89	0.28	40°11'49.512"N	104°38'07.761"W	0.25	
1407.00	0.450	199.580	1406.98	-5.38	-5.38	0.10	40°11'49.507"N	104°38'07.763"W	0.28	
1501.00	0.540	208.110	1500.97	-6.12	-6.12	-0.23	40°11'49.500"N	104°38'07.768"W	0.12	
1595.00	0.370	228.970	1594.97	-6.71	-6.71	-0.67	40°11'49.494"N	104°38'07.773"W	0.25	
1690.00	0.380	271.310	1689.97	-6.91	-6.90	-1.21	40°11'49.492"N	104°38'07.781"W	0.29	
1785.00	0.370	270.070	1784.97	-6.90	-6.89	-1.84	40°11'49.492"N	104°38'07.789"W	0.01	
1879.00	0.420	303.180	1878.97	-6.71	-6.70	-2.43	40°11'49.494"N	104°38'07.796"W	0.24	
1925.00	0.510	317.840	1924.96	-6.47	-6.46	-2.71	40°11'49.496"N	104°38'07.800"W	0.32	Tie to Surface Gyros
1982.00	0.650	66.170	1981.96	-6.15	-6.14	-2.58	40°11'49.500"N	104°38'07.798"W	1.66	
2077.00	0.220	106.810	2076.96	-5.98	-5.98	-1.91	40°11'49.501"N	104°38'07.789"W	0.53	
2171.00	0.930	289.090	2170.96	-5.79	-5.78	-2.46	40°11'49.503"N	104°38'07.796"W	1.22	
2266.00	1.370	218.620	2265.94	-6.43	-6.42	-3.90	40°11'49.497"N	104°38'07.815"W	1.45	
2360.00	1.090	157.210	2359.92	-8.13	-8.12	-4.25	40°11'49.480"N	104°38'07.820"W	1.36	
2455.00	1.150	179.630	2454.91	-9.92	-9.90	-3.90	40°11'49.463"N	104°38'07.815"W	0.46	
2550.00	5.720	189.780	2549.71	-15.54	-15.53	-4.70	40°11'49.407"N	104°38'07.826"W	4.83	
2644.00	6.490	182.550	2643.18	-25.47	-25.45	-5.73	40°11'49.309"N	104°38'07.841"W	1.16	
2739.00	6.790	166.300	2737.55	-36.29	-36.27	-4.64	40°11'49.202"N	104°38'07.828"W	2.00	
2833.00	6.500	143.610	2830.93	-45.95	-45.95	-0.16	40°11'49.106"N	104°38'07.772"W	2.79	
2928.00	7.120	152.010	2925.26	-55.46	-55.48	5.79	40°11'49.011"N	104°38'07.696"W	1.23	
3022.00	8.820	162.270	3018.36	-67.45	-67.49	10.72	40°11'48.892"N	104°38'07.634"W	2.35	
3116.00	8.660	162.880	3111.27	-81.06	-81.12	15.00	40°11'48.757"N	104°38'07.581"W	0.20	
3211.00	8.570	165.690	3205.19	-94.74	-94.81	18.85	40°11'48.621"N	104°38'07.533"W	0.45	
3305.00	7.920	164.180	3298.22	-107.74	-107.83	22.35	40°11'48.492"N	104°38'07.490"W	0.73	
3400.00	9.090	174.000	3392.18	-121.49	-121.59	24.92	40°11'48.356"N	104°38'07.458"W	1.96	
3494.00	9.260	184.880	3484.99	-136.41	-136.51	25.05	40°11'48.209"N	104°38'07.458"W	1.85	
3589.00	9.230	185.430	3578.75	-151.62	-151.71	23.68	40°11'48.059"N	104°38'07.478"W	0.10	
3683.00	9.360	182.160	3671.52	-166.77	-166.86	22.68	40°11'47.909"N	104°38'07.493"W	0.58	
3778.00	9.400	182.300	3765.25	-182.24	-182.33	22.07	40°11'47.756"N	104°38'07.502"W	0.05	
3872.00	9.830	177.520	3857.93	-197.93	-198.02	22.11	40°11'47.601"N	104°38'07.504"W	0.96	
3966.00	9.710	157.170	3950.59	-213.24	-213.34	25.54	40°11'47.449"N	104°38'07.462"W	3.66	
4061.00	9.830	141.560	4044.23	-226.95	-227.08	33.69	40°11'47.313"N	104°38'07.358"W	2.78	



Actual Wellpath Report

HURLEY H26-768 AWP

Page n of nn



REFERENCE WELLPATH IDENTIFICATION			
Operator	NOBLE ENERGY, INC	Slot	SLOT#04 HURLEY H26-768(2366'FNL&1319'FWL,SEC.26)
Area	COLORADO	Well	HURLEY H26-768
Field	WELD COUNTY (NOBLE NAD 83 GRID)	Wellbore	HURLEY H26-768 AWB
Facility	SEC.26-T03N-R65W		

WELLPATH DATA (174 stations)

MD [ft]	Inclination [°]	Azimuth [°]	TVD [ft]	Vert Sect [ft]	North [ft]	East [ft]	Latitude	Longitude	DLS [°/100ft]	Comments
4155.00	9.700	152.270	4136.88	-240.21	-240.38	42.36	40°11'47.181"N	104°38'07.248"W	1.93	
4250.00	9.800	162.790	4230.51	-254.99	-255.18	48.48	40°11'47.034"N	104°38'07.171"W	1.88	
4344.00	9.590	155.950	4323.17	-269.77	-269.98	54.04	40°11'46.887"N	104°38'07.102"W	1.24	
4439.00	9.750	163.920	4416.83	-284.70	-284.93	59.49	40°11'46.739"N	104°38'07.033"W	1.42	
4533.00	9.790	162.060	4509.47	-299.93	-300.18	64.16	40°11'46.588"N	104°38'06.975"W	0.34	
4628.00	9.690	154.780	4603.10	-314.83	-315.10	70.05	40°11'46.440"N	104°38'06.901"W	1.30	
4722.00	9.500	160.390	4695.79	-329.27	-329.57	76.03	40°11'46.296"N	104°38'06.826"W	1.01	
4817.00	9.710	148.920	4789.46	-343.49	-343.81	82.79	40°11'46.155"N	104°38'06.740"W	2.02	
4911.00	9.720	144.880	4882.12	-356.74	-357.09	91.45	40°11'46.023"N	104°38'06.630"W	0.73	
5006.00	9.570	146.370	4975.77	-369.84	-370.23	100.44	40°11'45.892"N	104°38'06.516"W	0.31	
5101.00	9.690	135.360	5069.44	-382.06	-382.49	110.43	40°11'45.770"N	104°38'06.389"W	1.94	
5195.00	8.660	119.230	5162.25	-391.10	-391.58	122.17	40°11'45.679"N	104°38'06.239"W	2.94	
5290.00	8.800	125.410	5256.16	-398.76	-399.28	134.33	40°11'45.602"N	104°38'06.083"W	1.00	
5384.00	9.270	131.400	5348.99	-407.89	-408.46	145.87	40°11'45.510"N	104°38'05.936"W	1.12	
5479.00	9.240	144.300	5442.77	-419.10	-419.71	156.06	40°11'45.398"N	104°38'05.806"W	2.18	
5574.00	9.310	166.350	5536.55	-432.75	-433.38	162.33	40°11'45.262"N	104°38'05.727"W	3.72	
5668.00	9.430	179.160	5629.31	-447.83	-448.47	164.24	40°11'45.113"N	104°38'05.704"W	2.22	
5763.00	9.450	198.240	5723.05	-463.03	-463.66	161.91	40°11'44.963"N	104°38'05.736"W	3.28	
5857.00	9.370	194.210	5815.78	-477.79	-478.41	157.62	40°11'44.817"N	104°38'05.793"W	0.71	
5952.00	9.000	180.220	5909.58	-492.73	-493.34	155.69	40°11'44.670"N	104°38'05.820"W	2.38	
6047.00	9.590	147.230	6003.39	-506.81	-507.43	159.95	40°11'44.530"N	104°38'05.767"W	5.57	
6141.00	9.580	122.790	6096.12	-517.59	-518.26	170.76	40°11'44.422"N	104°38'05.629"W	4.30	
6236.00	10.020	143.800	6189.76	-528.50	-529.21	182.29	40°11'44.313"N	104°38'05.481"W	3.77	
6330.00	9.550	165.340	6282.43	-542.62	-543.36	189.10	40°11'44.173"N	104°38'05.396"W	3.90	
6425.00	0.790	54.870	6377.00	-549.88	-550.62	191.64	40°11'44.101"N	104°38'05.364"W	10.37	
6519.00	7.340	352.010	6470.72	-543.55	-544.30	191.33	40°11'44.163"N	104°38'05.367"W	7.46	
6614.00	15.910	345.310	6563.69	-524.93	-525.66	187.18	40°11'44.348"N	104°38'05.418"W	9.12	
6708.00	26.840	342.690	6651.10	-492.14	-492.83	177.57	40°11'44.673"N	104°38'05.538"W	11.67	
6802.00	35.670	352.140	6731.42	-444.65	-445.30	167.48	40°11'45.144"N	104°38'05.662"W	10.72	
6897.00	45.490	359.300	6803.53	-383.17	-383.81	163.27	40°11'45.752"N	104°38'05.708"W	11.43	
6992.00	55.280	358.890	6864.03	-310.09	-310.72	162.09	40°11'46.474"N	104°38'05.714"W	10.31	
7086.00	64.160	358.470	6911.38	-229.03	-229.65	160.21	40°11'47.275"N	104°38'05.728"W	9.45	
7181.00	73.290	359.720	6945.81	-140.62	-141.23	158.84	40°11'48.149"N	104°38'05.735"W	9.69	
7275.00	79.790	2.120	6967.68	-49.26	-49.88	160.34	40°11'49.052"N	104°38'05.704"W	7.35	
7370.00	88.650	3.350	6977.24	45.07	44.43	164.85	40°11'49.983"N	104°38'05.634"W	9.41	
7464.00	90.030	1.980	6978.32	138.97	138.32	169.22	40°11'50.910"N	104°38'05.566"W	2.07	
7559.00	90.220	0.630	6978.12	233.95	233.29	171.38	40°11'51.849"N	104°38'05.526"W	1.44	
7654.00	90.340	0.070	6977.65	328.95	328.29	171.96	40°11'52.787"N	104°38'05.507"W	0.60	
7748.00	90.220	355.450	6977.19	422.84	422.19	168.29	40°11'53.716"N	104°38'05.542"W	4.92	
7843.00	90.000	355.350	6977.01	517.50	516.88	160.67	40°11'54.652"N	104°38'05.629"W	0.25	
7937.00	89.940	359.950	6977.06	611.38	610.78	156.82	40°11'55.580"N	104°38'05.666"W	4.89	
8032.00	90.060	2.940	6977.06	706.35	705.74	159.21	40°11'56.518"N	104°38'05.624"W	3.15	
8127.00	89.910	1.790	6977.08	801.28	800.65	163.13	40°11'57.456"N	104°38'05.561"W	1.22	
8221.00	90.000	359.930	6977.16	895.27	894.64	164.55	40°11'58.385"N	104°38'05.531"W	1.98	
8316.00	89.780	359.090	6977.34	990.26	989.63	163.73	40°11'59.323"N	104°38'05.530"W	0.91	



Actual Wellpath Report

HURLEY H26-768 AWP

Page n of nn



REFERENCE WELLPATH IDENTIFICATION			
Operator	NOBLE ENERGY, INC	Slot	SLOT#04 HURLEY H26-768(2366'FNL&1319'FWL,SEC.26)
Area	COLORADO	Well	HURLEY H26-768
Field	WELD COUNTY (NOBLE NAD 83 GRID)	Wellbore	HURLEY H26-768 AWB
Facility	SEC.26-T03N-R65W		

WELLPATH DATA (174 stations)

MD [ft]	Inclination [°]	Azimuth [°]	TVD [ft]	Vert Sect [ft]	North [ft]	East [ft]	Latitude	Longitude	DLS [°/100ft]	Comments
8410.00	90.000	359.850	6977.52	1084.25	1083.63	162.86	40°12'00.252"N	104°38'05.529"W	0.84	
8505.00	89.750	358.990	6977.73	1179.24	1178.62	161.90	40°12'01.191"N	104°38'05.530"W	0.94	
8599.00	89.780	358.230	6978.11	1273.20	1272.59	159.62	40°12'02.120"N	104°38'05.547"W	0.81	
8694.00	89.850	357.370	6978.42	1368.12	1367.52	155.97	40°12'03.058"N	104°38'05.582"W	0.91	
8788.00	90.030	356.930	6978.52	1461.98	1461.41	151.30	40°12'03.986"N	104°38'05.631"W	0.51	
8883.00	89.970	356.870	6978.52	1556.82	1556.27	146.16	40°12'04.924"N	104°38'05.685"W	0.09	
8977.00	90.060	357.210	6978.49	1650.68	1650.14	141.31	40°12'05.852"N	104°38'05.736"W	0.37	
9072.00	90.000	357.560	6978.44	1745.56	1745.04	136.98	40°12'06.790"N	104°38'05.780"W	0.37	
9166.00	89.970	357.770	6978.47	1839.47	1838.96	133.15	40°12'07.719"N	104°38'05.817"W	0.23	
9261.00	89.940	358.310	6978.54	1934.40	1933.91	129.90	40°12'08.657"N	104°38'05.847"W	0.57	
9355.00	90.150	358.820	6978.47	2028.36	2027.88	127.54	40°12'09.586"N	104°38'05.866"W	0.59	
9450.00	89.970	358.850	6978.37	2123.33	2122.86	125.61	40°12'10.525"N	104°38'05.878"W	0.19	
9544.00	89.850	359.180	6978.52	2217.31	2216.85	123.99	40°12'11.454"N	104°38'05.888"W	0.37	
9639.00	89.910	359.510	6978.72	2312.30	2311.84	122.91	40°12'12.393"N	104°38'05.890"W	0.35	
9733.00	89.970	359.040	6978.82	2406.28	2405.83	121.72	40°12'13.322"N	104°38'05.893"W	0.50	
9828.00	89.820	359.360	6978.99	2501.27	2500.82	120.39	40°12'14.260"N	104°38'05.898"W	0.37	
9922.00	90.280	359.270	6978.91	2595.26	2594.81	119.27	40°12'15.189"N	104°38'05.901"W	0.50	
10017.00	89.780	358.450	6978.86	2690.23	2689.79	117.38	40°12'16.128"N	104°38'05.913"W	1.01	
10111.00	90.030	359.330	6979.01	2784.20	2783.78	115.56	40°12'17.057"N	104°38'05.925"W	0.97	
10206.00	89.820	359.140	6979.14	2879.19	2878.77	114.29	40°12'17.996"N	104°38'05.929"W	0.30	
10300.00	89.940	359.480	6979.33	2973.18	2972.76	113.16	40°12'18.924"N	104°38'05.932"W	0.38	
10395.00	89.820	1.090	6979.53	3068.17	3067.76	113.63	40°12'19.863"N	104°38'05.914"W	1.70	
10489.00	89.850	1.010	6979.80	3162.16	3161.74	115.35	40°12'20.792"N	104°38'05.880"W	0.09	
10584.00	89.940	0.620	6979.98	3257.16	3256.73	116.70	40°12'21.730"N	104°38'05.851"W	0.42	
10679.00	89.940	359.710	6980.08	3352.16	3351.73	116.98	40°12'22.669"N	104°38'05.835"W	0.96	
10773.00	89.880	358.610	6980.23	3446.14	3445.72	115.60	40°12'23.598"N	104°38'05.841"W	1.17	
10868.00	89.820	358.520	6980.47	3541.10	3540.69	113.22	40°12'24.536"N	104°38'05.860"W	0.11	
10963.00	90.030	358.410	6980.60	3636.05	3635.65	110.68	40°12'25.475"N	104°38'05.881"W	0.25	
11057.00	89.880	358.560	6980.67	3730.01	3729.62	108.19	40°12'26.404"N	104°38'05.901"W	0.23	
11152.00	89.780	358.400	6980.95	3824.97	3824.58	105.67	40°12'27.342"N	104°38'05.922"W	0.20	
11246.00	89.820	358.580	6981.28	3918.92	3918.55	103.19	40°12'28.271"N	104°38'05.942"W	0.20	
11341.00	90.030	358.850	6981.41	4013.89	4013.53	101.06	40°12'29.210"N	104°38'05.957"W	0.36	
11436.00	89.970	358.780	6981.41	4108.86	4108.51	99.10	40°12'30.149"N	104°38'05.971"W	0.10	
11531.00	90.060	359.820	6981.38	4203.85	4203.50	97.94	40°12'31.087"N	104°38'05.974"W	1.10	
11625.00	89.970	1.690	6981.36	4297.84	4297.49	99.18	40°12'32.016"N	104°38'05.946"W	1.99	
11720.00	90.250	1.230	6981.18	4392.82	4392.45	101.60	40°12'32.954"N	104°38'05.903"W	0.57	
11814.00	90.520	0.790	6980.54	4486.80	4486.44	103.25	40°12'33.883"N	104°38'05.869"W	0.55	
11909.00	90.310	0.770	6979.86	4581.80	4581.43	104.55	40°12'34.821"N	104°38'05.841"W	0.22	
12003.00	90.120	359.660	6979.50	4675.80	4675.42	104.90	40°12'35.750"N	104°38'05.824"W	1.20	
12098.00	90.280	359.380	6979.17	4770.79	4770.42	104.10	40°12'36.689"N	104°38'05.823"W	0.34	
12192.00	90.340	359.260	6978.66	4864.77	4864.41	102.99	40°12'37.618"N	104°38'05.825"W	0.14	
12287.00	90.280	358.300	6978.15	4959.74	4959.39	100.97	40°12'38.556"N	104°38'05.839"W	1.01	
12381.00	90.030	0.140	6977.89	5053.72	5053.37	99.69	40°12'39.485"N	104°38'05.844"W	1.98	
12476.00	90.250	1.810	6977.66	5148.71	5148.36	101.30	40°12'40.424"N	104°38'05.811"W	1.77	
12571.00	90.180	2.000	6977.31	5243.67	5243.30	104.46	40°12'41.362"N	104°38'05.759"W	0.21	



Actual Wellpath Report

HURLEY H26-768 AWP

Page n of nn



REFERENCE WELLPATH IDENTIFICATION			
Operator	NOBLE ENERGY, INC	Slot	SLOT#04 HURLEY H26-768(2366'FNL&1319'FWL,SEC.26)
Area	COLORADO	Well	HURLEY H26-768
Field	WELD COUNTY (NOBLE NAD 83 GRID)	Wellbore	HURLEY H26-768 AWP
Facility	SEC.26-T03N-R65W		

WELLPATH DATA (174 stations)

MD [ft]	Inclination [°]	Azimuth [°]	TVD [ft]	Vert Sect [ft]	North [ft]	East [ft]	Latitude	Longitude	DLS [°/100ft]	Comments
12665.00	90.150	0.610	6977.03	5337.65	5337.28	106.60	40°12'42.290"N	104°38'05.719"W	1.48	
12760.00	90.250	359.410	6976.70	5432.65	5432.27	106.62	40°12'43.229"N	104°38'05.707"W	1.27	
12855.00	90.060	358.120	6976.45	5527.61	5527.25	104.57	40°12'44.167"N	104°38'05.722"W	1.37	
12949.00	89.850	355.930	6976.52	5621.46	5621.12	99.69	40°12'45.095"N	104°38'05.773"W	2.34	
13044.00	90.310	355.110	6976.39	5716.14	5715.83	92.27	40°12'46.032"N	104°38'05.856"W	0.99	
13138.00	89.970	353.600	6976.16	5809.65	5809.37	83.03	40°12'46.957"N	104°38'05.964"W	1.65	
13233.00	90.280	351.520	6975.95	5903.79	5903.56	70.73	40°12'47.889"N	104°38'06.111"W	2.21	
13327.00	89.660	351.800	6976.00	5996.74	5996.57	57.09	40°12'48.810"N	104°38'06.275"W	0.72	
13422.00	89.690	354.080	6976.54	6090.97	6090.84	45.42	40°12'49.742"N	104°38'06.413"W	2.40	
13516.00	89.600	357.890	6977.12	6184.69	6184.59	38.83	40°12'50.669"N	104°38'06.486"W	4.05	
13611.00	89.780	359.630	6977.64	6279.66	6279.56	36.78	40°12'51.608"N	104°38'06.501"W	1.84	
13705.00	89.880	359.200	6977.91	6373.65	6373.56	35.82	40°12'52.537"N	104°38'06.501"W	0.47	
13800.00	90.000	0.540	6978.01	6468.64	6468.55	35.60	40°12'53.476"N	104°38'06.492"W	1.42	
13894.00	90.000	1.000	6978.01	6562.64	6562.55	36.87	40°12'54.404"N	104°38'06.464"W	0.49	
13989.00	90.580	2.340	6977.53	6657.60	6657.50	39.64	40°12'55.342"N	104°38'06.416"W	1.54	
14083.00	89.850	3.260	6977.18	6751.51	6751.39	44.23	40°12'56.270"N	104°38'06.345"W	1.25	
14178.00	90.030	3.540	6977.28	6846.36	6846.22	49.86	40°12'57.206"N	104°38'06.261"W	0.35	
14273.00	89.940	1.600	6977.30	6941.28	6941.12	54.12	40°12'58.143"N	104°38'06.194"W	2.04	
14367.00	89.970	0.720	6977.38	7035.26	7035.10	56.02	40°12'59.072"N	104°38'06.158"W	0.94	
14462.00	89.880	1.990	6977.50	7130.24	7130.07	58.27	40°13'00.010"N	104°38'06.117"W	1.34	
14557.00	90.120	3.170	6977.50	7225.16	7224.97	62.55	40°13'00.948"N	104°38'06.050"W	1.27	
14651.00	89.910	4.050	6977.48	7318.99	7318.78	68.47	40°13'01.874"N	104°38'05.962"W	0.96	
14746.00	89.780	4.540	6977.74	7413.75	7413.52	75.58	40°13'02.809"N	104°38'05.858"W	0.53	
14840.00	90.000	2.930	6977.92	7507.57	7507.31	81.70	40°13'03.736"N	104°38'05.767"W	1.73	
14935.00	90.000	1.970	6977.92	7602.50	7602.23	85.76	40°13'04.673"N	104°38'05.703"W	1.01	
15029.00	90.150	1.810	6977.79	7696.46	7696.17	88.86	40°13'05.601"N	104°38'05.651"W	0.23	
15124.00	89.880	2.030	6977.77	7791.42	7791.12	92.05	40°13'06.539"N	104°38'05.598"W	0.37	
15219.00	90.000	1.070	6977.87	7886.39	7886.09	94.62	40°13'07.477"N	104°38'05.553"W	1.02	
15313.00	90.090	358.980	6977.79	7980.39	7980.08	94.66	40°13'08.406"N	104°38'05.541"W	2.23	
15408.00	90.030	356.890	6977.69	8075.31	8075.01	91.23	40°13'09.344"N	104°38'05.573"W	2.20	
15502.00	89.970	356.670	6977.69	8169.14	8168.86	85.95	40°13'10.272"N	104°38'05.629"W	0.24	
15597.00	89.850	356.710	6977.84	8263.96	8263.71	80.47	40°13'11.210"N	104°38'05.688"W	0.13	
15691.00	90.250	356.010	6977.76	8357.74	8357.52	74.50	40°13'12.138"N	104°38'05.753"W	0.86	
15786.00	89.970	356.360	6977.58	8452.51	8452.30	68.18	40°13'13.075"N	104°38'05.823"W	0.47	
15880.00	90.000	355.630	6977.60	8546.25	8546.07	61.62	40°13'14.002"N	104°38'05.896"W	0.78	
15975.00	89.720	353.700	6977.84	8640.80	8640.66	52.78	40°13'14.938"N	104°38'05.998"W	2.05	
16069.00	89.880	353.710	6978.16	8734.19	8734.09	42.48	40°13'15.862"N	104°38'06.119"W	0.17	
16122.00	90.030	354.800	6978.21	8786.90	8786.82	37.17	40°13'16.383"N	104°38'06.181"W	2.08	Last BHI MWD Survey
16146.00	90.030	354.800	6978.19	8810.79	8810.72	35.00	40°13'16.620"N	104°38'06.206"W	0.00	Projection to Bit



Actual Wellpath Report

HURLEY H26-768 AWP

Page n of nn



REFERENCE WELLPATH IDENTIFICATION			
Operator	NOBLE ENERGY, INC	Slot	SLOT#04 HURLEY H26-768(2366'FNL&1319'FWL,SEC.26)
Area	COLORADO	Well	HURLEY H26-768
Field	WELD COUNTY (NOBLE NAD 83 GRID)	Wellbore	HURLEY H26-768 AWB
Facility	SEC.26-T03N-R65W		

HOLE & CASING SECTIONS - Ref Wellbore: HURLEY H26-768 AWB Ref Wellpath: HURLEY H26-768 AWP									
String/Diameter	Start MD [ft]	End MD [ft]	Interval [ft]	Start TVD [ft]	End TVD [ft]	Start N/S [ft]	Start E/W [ft]	End N/S [ft]	End E/W [ft]
13.5in Open Hole	30.00	1932.00	1902.00	30.00	1931.96	0.00	0.01	-6.42	-2.74
9.625in Casing Surface	30.00	1932.00	1902.00	30.00	1931.96	0.00	0.01	-6.42	-2.74
8.5in Open Hole	1932.00	16146.00	14214.00	1931.96	6978.19	-6.42	-2.74	8810.72	35.00

TARGETS								
Name	TVD [ft]	North [ft]	East [ft]	Grid East [US ft]	Grid North [US ft]	Latitude	Longitude	Shape
SECTION 14-T03N-R65W	0.00	0.22	22.35	3241514.12	1315823.44	40°11'49.560"N	104°38'07.476"W	polygon
SECTION 23-T03N-R65W	0.00	0.22	22.35	3241514.12	1315823.44	40°11'49.560"N	104°38'07.476"W	polygon
SECTION 26-T03N-R65W	0.00	0.22	22.35	3241514.12	1315823.44	40°11'49.560"N	104°38'07.476"W	polygon
HURLEY H26-768 LANDING	6978.00	25.00	150.00	3241641.76	1315848.22	40°11'49.793"N	104°38'05.828"W	point
HURLEY H26-768 REV-1 BHL (1170'FSL&1425'FWL,SEC.14)	6978.00	8813.17	34.16	3241525.93	1324636.00	40°13'16.644"N	104°38'06.216"W	point

WELLPATH COMPOSITION - Ref Wellbore: HURLEY H26-768 AWP Ref Wellpath: HURLEY H26-768 AWP				
Start MD [ft]	End MD [ft]	Positional Uncertainty Model	Log Name/Comment	Wellbore
0.00	1925.00	Gyrodata standard - Drop gyro or Multi-shot	3rd Party Surface Gyros <83'-1925'>	HURLEY H26-768 AWB
1925.00	16122.00	OWSG MWD rev2 + IFR1 + Multi-Station Correction	BHGE/ATCurve 8.5" Hole OWSG MWD+IFR1+MSA <1982'-16122'>	HURLEY H26-768 AWB
16122.00	16146.00	Blind Drilling (std)	Projection to bit	HURLEY H26-768 AWB