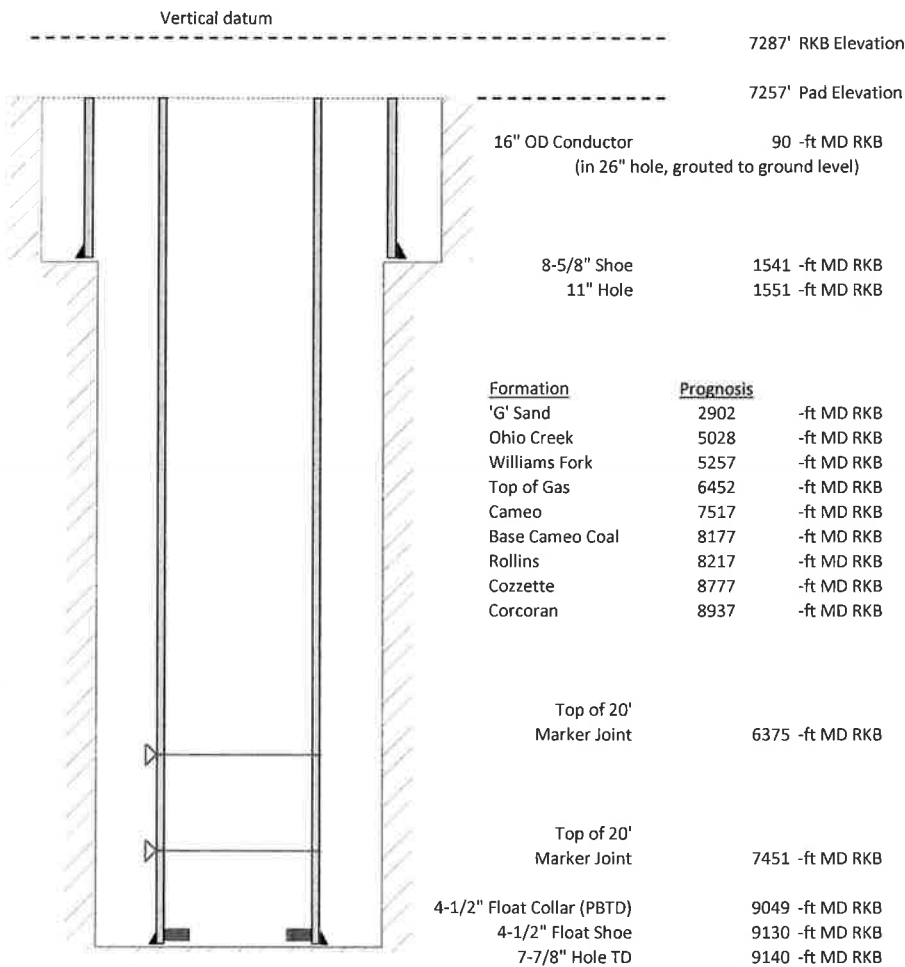


Laramie Energy, LLC
BCU 0993-21-09E
Slot A-9
H&P 522 (30-ft KB)

API # : 05-077-10513-00
 SW/4 NW/4 S13/T9S/R94W/6th PM
 Mesa County, CO
 Date of diagram : 9/4/2018



Cementing details

8-5/8" 24# Surface Csg	Lead	Tail
Density (ppg)	12.3	12.8
Volume (sx)	167	94
Yield (cf/sx)	2.45	2.18
Top (ft RKB)	30	1030
Bottom (ft RKB)	1030	1541
Returns (full or partial)	Full	Full

4-1/2" 11.6# Prod Csg	Lead	Tail
Density (ppg)	12.5	13.3
Volume (sx)	752	460
Yield (cf/sx)	1.94	1.73
Est Top (ft RKB)	1030	6252
Est Bottom (ft RKB)	6252	9130
Returns (full or partial)	Full	Full

Displacement
8.3 ppg
140 bbls

Other Remarks : Surface-18 bbls cement to surface. Production- 50% returns last 20 bbls of displacement. No spacer to surface.