

NOBLE ENERGY, INC

Location: COLORADO Slot: SLOT#01 HURLEY H26-750(2366'FNL&1386'FWL,SEC.26)
Field: WELD COUNTY (NOBLE NAD 83 GRID) Well: HURLEY H26-750
Facility: SEC.26-T03N-R65W Wellbore: HURLEY H26-750 PWB

Plot reference wellpath is HURLEY H26-750 (REV-A.0) PWP	Grid System: NAD83 / Lambert Colorado SP, Northern Zone (501), US feet
True vertical depths are referenced to RIG (30'KB) (RKB)	North Reference: Grid north
Measured depths are referenced to RIG (30'KB) (RKB)	Scale: True distance
RIG (30'KB) (RKB) to Mean Sea Level: 4852 feet	Depths are in feet
Mean Sea Level to Ground level (At Slot: SLOT#01 HURLEY H26-750(2366'FNL&1386'FWL,SEC.26)): 0 feet	Created by: amuntime on 2018-06-15
Coordinates are in feet referenced to Slot	Database: WA DENVER

Survey Program

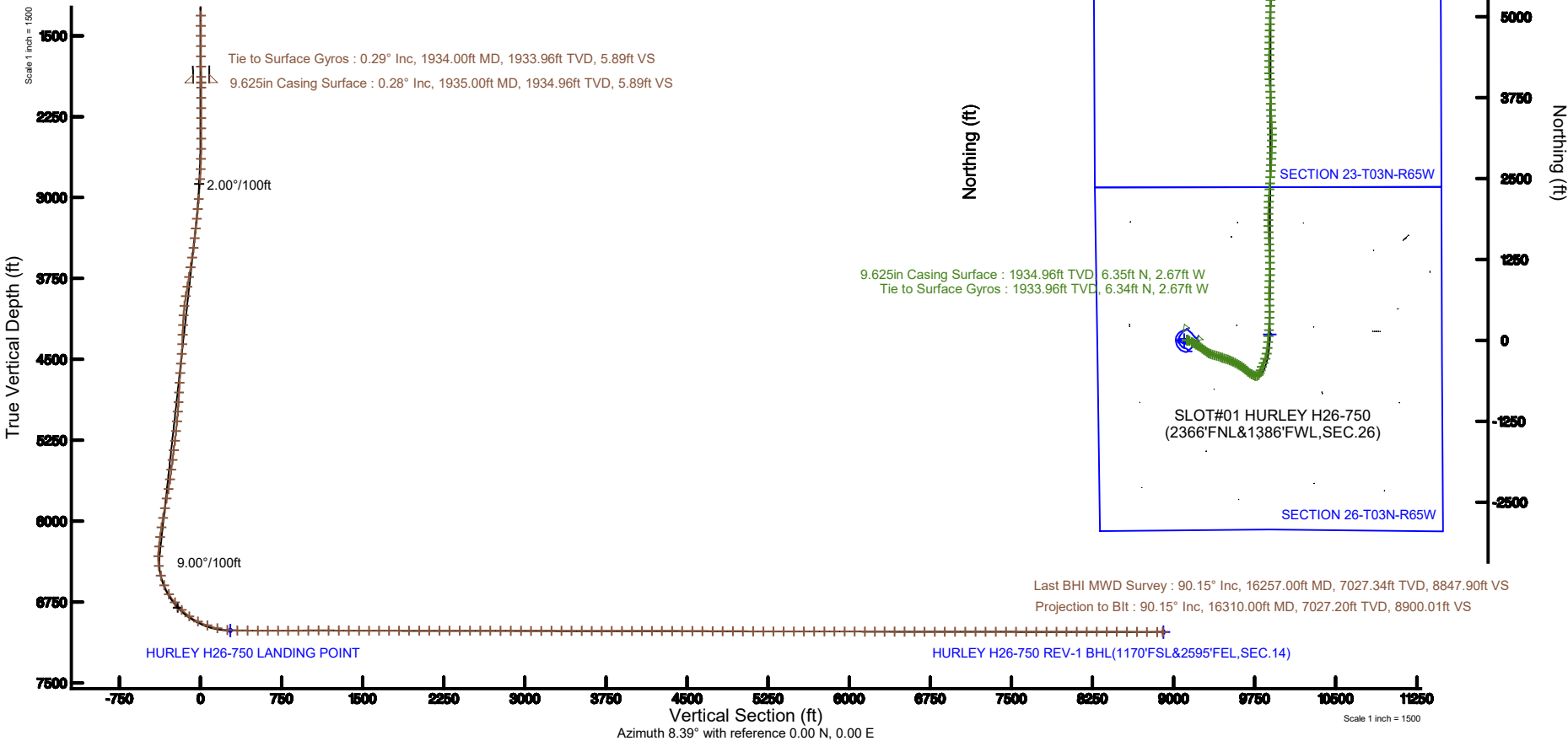
Start MD (ft)	End MD (ft)	Tool	Model	Log Name/Comment	Wellbore
30.00	16320.52	OWSG MWD rev2	OWSG MWD rev2 + IFR1 + Multi-Station Correction		HURLEY H26-750 PWB

Comments

SURFACE LOCATION: SENW
40.19710N
104.63525W
API: 05-123-46768

Location Information

Facility Name			Grid East (US ft)	Grid North (US ft)	Latitude	Longitude
SEC.26-T03N-R65W			3241514.116	1315823.443	40°11'49.560"N	104°38'07.476"W
Slot	Local N (ft)	Local E (ft)	Grid East (US ft)	Grid North (US ft)	Latitude	Longitude
SLOT#01 HURLEY H26-750(2366'FNL&1386'FWL,SEC.26)	0.44	44.69	3241558.808	1315823.879	40°11'49.560"N	104°38'06.900"W
RIG (30'KB) (RKB) to Ground level (At Slot: SLOT#01 HURLEY H26-750(2366'FNL&1386'FWL,SEC.26))					4852#	
Mean Sea Level to Ground level (At Slot: SLOT#01 HURLEY H26-750(2366'FNL&1386'FWL,SEC.26))					0#	
RIG (30'KB) (RKB) to Mean Sea Level					4852#	





Actual Wellpath Report

HURLEY H26-750 AWP

Page n of nn



REFERENCE WELLPATH IDENTIFICATION			
Operator	NOBLE ENERGY, INC	Slot	SLOT#01 HURLEY H26-750(2366'FNL&1386'FWL,SEC.26)
Area	COLORADO	Well	HURLEY H26-750
Field	WELD COUNTY (NOBLE NAD 83 GRID)	Wellbore	HURLEY H26-750 AWB
Facility	SEC.26-T03N-R65W		

REPORT SETUP INFORMATION			
Projection System	NAD83 / Lambert Colorado SP, Northern Zone (501), US feet	Software System	WellArchitect® 5.1
North Reference	Grid	User	Amuntime
Scale	0.999957	Report Generated	6/15/2018 at 11:25:02 AM
Convergence at slot	0.56° East	Database/Source file	WA DENVER/HURLEY_H26-750_AWP.xml

WELLPATH LOCATION						
	Local coordinates		Grid coordinates		Geographic coordinates	
	North[ft]	East[ft]	Easting[US ft]	Northing[US ft]	Latitude	Longitude
Slot Location	0.44	44.69	3241558.81	1315823.88	40°11'49.560"N	104°38'06.900"W
Facility Reference Pt			3241514.12	1315823.44	40°11'49.560"N	104°38'07.476"W
Field Reference Pt			3000000.00	4454105.15	48°46'34.315"N	105°30'00.000"W

WELLPATH DATUM			
Calculation method	Minimum curvature	RIG (30'KB) (RKB) to Facility Vertical Datum	4852.00ft
Horizontal Reference Pt	Slot	RIG (30'KB) (RKB) to Mean Sea Level	4852.00ft
Vertical Reference Pt	RIG (30'KB) (RKB)	RIG (30'KB) (RKB) to Ground Level at Slot (SLOT#01 HURLEY H26-750 (2366'FNL&1386'FWL,SEC.26))	4852.00ft
MD Reference Pt	RIG (30'KB) (RKB)	Section Origin	N 0.00, E 0.00 ft
Field Vertical Reference	Mean Sea Level	Section Azimuth	8.39°



Actual Wellpath Report

HURLEY H26-750 AWP

Page n of nn



REFERENCE WELLPATH IDENTIFICATION

Operator	NOBLE ENERGY, INC	Slot	SLOT#01 HURLEY H26-750(2366'FNL&1386'FWL, SEC.26)
Area	COLORADO	Well	HURLEY H26-750
Field	WELD COUNTY (NOBLE NAD 83 GRID)	Wellbore	HURLEY H26-750 AWB
Facility	SEC.26-T03N-R65W		

WELLPATH DATA (174 stations)

MD [ft]	Inclination [°]	Azimuth [°]	TVD [ft]	Vert Sect [ft]	North [ft]	East [ft]	Latitude	Longitude	DLS [°/100ft]	Comments
0.00	0.000	297.020	0.00	0.00	0.00	0.00	40°11'49.560"N	104°38'06.900"W	0.00	
87.00	0.210	297.020	87.00	0.05	0.07	-0.14	40°11'49.561"N	104°38'06.902"W	0.24	
182.00	0.050	353.770	182.00	0.15	0.19	-0.30	40°11'49.562"N	104°38'06.904"W	0.20	
274.00	0.450	347.000	274.00	0.52	0.58	-0.39	40°11'49.566"N	104°38'06.905"W	0.44	
368.00	0.580	326.910	367.99	1.22	1.34	-0.73	40°11'49.573"N	104°38'06.909"W	0.23	
463.00	0.470	333.160	462.99	1.90	2.09	-1.17	40°11'49.581"N	104°38'06.915"W	0.13	
557.00	0.180	268.320	556.99	2.19	2.43	-1.49	40°11'49.584"N	104°38'06.919"W	0.45	
652.00	0.360	321.510	651.99	2.37	2.66	-1.83	40°11'49.586"N	104°38'06.923"W	0.31	
746.00	0.700	345.140	745.98	3.10	3.45	-2.16	40°11'49.594"N	104°38'06.927"W	0.42	
841.00	0.340	331.490	840.98	3.86	4.26	-2.44	40°11'49.602"N	104°38'06.931"W	0.40	
935.00	0.530	247.790	934.98	3.86	4.34	-2.98	40°11'49.603"N	104°38'06.938"W	0.64	
1030.00	0.200	241.340	1029.98	3.53	4.09	-3.53	40°11'49.601"N	104°38'06.945"W	0.35	
1125.00	0.540	272.480	1124.97	3.39	4.03	-4.12	40°11'49.600"N	104°38'06.953"W	0.40	
1219.00	0.180	190.590	1218.97	3.19	3.91	-4.59	40°11'49.599"N	104°38'06.959"W	0.58	
1313.00	0.190	105.240	1312.97	3.03	3.72	-4.47	40°11'49.597"N	104°38'06.957"W	0.27	
1408.00	0.210	251.900	1407.97	2.93	3.62	-4.48	40°11'49.596"N	104°38'06.957"W	0.40	
1502.00	0.370	104.430	1501.97	2.82	3.50	-4.35	40°11'49.595"N	104°38'06.956"W	0.59	
1597.00	0.620	31.320	1596.97	3.26	3.86	-3.79	40°11'49.598"N	104°38'06.948"W	0.66	
1692.00	0.660	15.880	1691.96	4.28	4.82	-3.37	40°11'49.608"N	104°38'06.943"W	0.19	
1786.00	0.420	29.950	1785.96	5.14	5.64	-3.05	40°11'49.616"N	104°38'06.939"W	0.29	
1880.00	0.250	33.530	1879.96	5.64	6.11	-2.76	40°11'49.621"N	104°38'06.935"W	0.18	
1934.00	0.290	9.820	1933.96	5.89	6.34	-2.67	40°11'49.623"N	104°38'06.934"W	0.22	Tie to Surface Gyros
1981.00	0.060	282.200	1980.96	6.01	6.47	-2.68	40°11'49.624"N	104°38'06.934"W	0.62	
2075.00	0.060	350.340	2074.96	6.06	6.53	-2.74	40°11'49.625"N	104°38'06.934"W	0.07	
2170.00	0.030	29.570	2169.96	6.13	6.60	-2.73	40°11'49.625"N	104°38'06.934"W	0.04	
2264.00	0.030	216.170	2263.96	6.13	6.60	-2.73	40°11'49.625"N	104°38'06.934"W	0.06	
2359.00	0.090	348.000	2358.96	6.18	6.65	-2.76	40°11'49.626"N	104°38'06.935"W	0.12	
2454.00	1.740	95.920	2453.94	6.31	6.58	-1.34	40°11'49.625"N	104°38'06.916"W	1.86	
2548.00	4.700	103.520	2547.78	6.03	5.53	3.82	40°11'49.614"N	104°38'06.850"W	3.17	
2643.00	6.460	108.270	2642.33	4.76	2.94	12.68	40°11'49.588"N	104°38'06.736"W	1.91	
2737.00	9.850	114.360	2735.37	1.64	-2.03	25.03	40°11'49.537"N	104°38'06.578"W	3.72	
2832.00	9.810	116.830	2828.97	-3.16	-9.04	39.65	40°11'49.467"N	104°38'06.390"W	0.45	
3020.00	13.270	120.500	3013.15	-16.35	-27.22	72.55	40°11'49.284"N	104°38'05.969"W	1.88	
3115.00	14.820	119.610	3105.30	-24.85	-38.76	92.51	40°11'49.168"N	104°38'05.713"W	1.65	
3209.00	16.470	119.920	3195.82	-34.09	-51.35	114.51	40°11'49.042"N	104°38'05.431"W	1.76	
3304.00	17.720	118.070	3286.62	-43.91	-64.87	138.94	40°11'48.906"N	104°38'05.118"W	1.43	
3398.00	15.990	119.210	3376.58	-53.33	-77.92	162.86	40°11'48.774"N	104°38'04.811"W	1.87	
3493.00	17.180	123.740	3467.63	-63.99	-92.10	185.95	40°11'48.632"N	104°38'04.515"W	1.85	
3587.00	18.850	127.160	3557.02	-77.24	-108.98	209.60	40°11'48.463"N	104°38'04.213"W	2.10	
3682.00	18.780	126.770	3646.94	-91.90	-127.41	234.08	40°11'48.278"N	104°38'03.900"W	0.15	
3776.00	18.830	126.920	3735.93	-106.33	-145.58	258.33	40°11'48.097"N	104°38'03.589"W	0.07	
3871.00	19.370	127.390	3825.70	-121.30	-164.35	283.11	40°11'47.909"N	104°38'03.273"W	0.59	
3965.00	19.220	124.620	3914.42	-135.69	-182.61	308.22	40°11'47.726"N	104°38'02.951"W	0.99	
4059.00	19.440	118.030	4003.13	-147.79	-198.75	334.77	40°11'47.564"N	104°38'02.611"W	2.33	
4154.00	19.410	108.970	4092.74	-156.01	-211.32	363.66	40°11'47.437"N	104°38'02.240"W	3.17	



Actual Wellpath Report

HURLEY H26-750 AWP

Page n of nn



REFERENCE WELLPATH IDENTIFICATION

Operator	NOBLE ENERGY, INC	Slot	SLOT#01 HURLEY H26-750(2366'FNL&1386'FWL, SEC.26)
Area	COLORADO	Well	HURLEY H26-750
Field	WELD COUNTY (NOBLE NAD 83 GRID)	Wellbore	HURLEY H26-750 AWB
Facility	SEC.26-T03N-R65W		

WELLPATH DATA (174 stations)

MD [ft]	Inclination [°]	Azimuth [°]	TVD [ft]	Vert Sect [ft]	North [ft]	East [ft]	Latitude	Longitude	DLS [°/100ft]	Comments
4248.00	19.230	106.550	4181.45	-161.07	-220.80	393.27	40°11'47.340"N	104°38'01.860"W	0.87	
4343.00	19.300	104.220	4271.13	-164.89	-229.12	423.48	40°11'47.255"N	104°38'01.472"W	0.81	
4437.00	19.100	105.470	4359.90	-168.36	-237.04	453.36	40°11'47.174"N	104°38'01.088"W	0.49	
4532.00	19.110	110.050	4449.68	-173.42	-246.51	482.95	40°11'47.077"N	104°38'00.708"W	1.58	
4627.00	19.120	112.300	4539.44	-180.31	-257.75	511.96	40°11'46.964"N	104°38'00.335"W	0.78	
4721.00	19.160	110.950	4628.24	-187.36	-269.11	540.61	40°11'46.849"N	104°37'59.968"W	0.47	
4816.00	19.050	108.080	4718.01	-193.36	-279.49	569.90	40°11'46.743"N	104°37'59.591"W	1.00	
4910.00	19.150	106.510	4806.84	-198.12	-288.63	599.27	40°11'46.650"N	104°37'59.214"W	0.56	
5005.00	18.790	108.420	4896.68	-202.99	-297.90	628.72	40°11'46.556"N	104°37'58.836"W	0.76	
5099.00	19.100	111.810	4985.59	-209.20	-308.39	657.37	40°11'46.449"N	104°37'58.468"W	1.22	
5194.00	19.220	114.290	5075.33	-217.09	-320.60	686.05	40°11'46.326"N	104°37'58.100"W	0.87	
5289.00	19.150	115.880	5165.05	-226.06	-333.84	714.32	40°11'46.192"N	104°37'57.737"W	0.55	
5383.00	19.340	118.700	5253.80	-236.09	-348.04	741.85	40°11'46.049"N	104°37'57.384"W	1.01	
5478.00	19.000	119.980	5343.54	-247.25	-363.32	769.04	40°11'45.896"N	104°37'57.036"W	0.57	
5572.00	18.500	120.170	5432.55	-258.41	-378.46	795.19	40°11'45.743"N	104°37'56.701"W	0.54	
5667.00	18.660	120.820	5522.60	-269.80	-393.82	821.27	40°11'45.589"N	104°37'56.367"W	0.28	
5761.00	18.950	122.760	5611.58	-281.84	-409.79	847.02	40°11'45.429"N	104°37'56.037"W	0.73	
5856.00	19.390	129.570	5701.32	-296.37	-428.18	872.15	40°11'45.245"N	104°37'55.715"W	2.40	
5951.00	19.440	129.080	5790.92	-312.61	-448.19	896.58	40°11'45.045"N	104°37'55.403"W	0.18	
6045.00	18.500	132.180	5879.82	-328.89	-468.07	919.78	40°11'44.846"N	104°37'55.107"W	1.47	
6140.00	19.530	131.260	5969.63	-345.89	-488.66	942.88	40°11'44.640"N	104°37'54.812"W	1.13	
6234.00	19.630	123.490	6058.21	-361.12	-507.74	967.87	40°11'44.449"N	104°37'54.492"W	2.77	
6329.00	19.680	118.590	6147.68	-373.41	-524.20	995.22	40°11'44.284"N	104°37'54.142"W	1.74	
6423.00	19.700	116.720	6236.19	-383.86	-538.90	1023.27	40°11'44.136"N	104°37'53.782"W	0.67	
6517.00	18.120	105.790	6325.14	-390.73	-550.01	1051.50	40°11'44.024"N	104°37'53.420"W	4.12	
6612.00	17.350	70.630	6415.88	-386.02	-549.33	1079.16	40°11'44.028"N	104°37'53.063"W	11.14	
6707.00	18.210	39.320	6506.55	-366.65	-533.11	1101.98	40°11'44.186"N	104°37'52.767"W	9.99	
6801.00	24.070	26.450	6594.23	-335.78	-504.54	1119.85	40°11'44.466"N	104°37'52.533"W	7.92	
6896.00	32.460	15.400	6677.88	-291.95	-462.51	1135.29	40°11'44.880"N	104°37'52.329"W	10.38	
6990.00	40.410	18.960	6753.46	-236.87	-409.29	1151.91	40°11'45.404"N	104°37'52.108"W	8.75	
7085.00	46.680	27.360	6822.34	-173.80	-349.36	1177.85	40°11'45.994"N	104°37'51.766"W	8.97	
7179.00	54.390	19.360	6882.10	-103.78	-282.78	1206.30	40°11'46.649"N	104°37'51.391"W	10.50	
7274.00	64.060	9.500	6930.74	-22.82	-203.89	1226.23	40°11'47.427"N	104°37'51.124"W	13.52	
7368.00	71.230	6.940	6966.47	64.05	-117.90	1238.60	40°11'48.275"N	104°37'50.954"W	8.03	
7463.00	76.260	5.120	6993.06	155.14	-27.24	1248.16	40°11'49.170"N	104°37'50.819"W	5.60	
7557.00	83.800	4.140	7009.32	247.45	64.97	1255.62	40°11'50.081"N	104°37'50.712"W	8.09	
7652.00	89.910	3.120	7014.53	341.93	159.59	1261.62	40°11'51.015"N	104°37'50.622"W	6.52	
7747.00	90.000	3.630	7014.61	436.57	254.43	1267.21	40°11'51.952"N	104°37'50.538"W	0.55	
7841.00	89.880	1.540	7014.71	530.08	348.33	1271.45	40°11'52.879"N	104°37'50.472"W	2.23	
7936.00	90.000	358.560	7014.81	624.07	443.32	1271.54	40°11'53.818"N	104°37'50.459"W	3.14	
8031.00	89.910	358.710	7014.88	717.70	538.29	1269.27	40°11'54.756"N	104°37'50.476"W	0.18	
8125.00	89.940	358.940	7015.00	810.39	632.27	1267.35	40°11'55.685"N	104°37'50.489"W	0.25	
8220.00	90.280	359.880	7014.82	904.22	727.26	1266.37	40°11'56.624"N	104°37'50.490"W	1.05	
8314.00	90.490	1.570	7014.19	997.38	821.25	1267.56	40°11'57.553"N	104°37'50.462"W	1.81	
8409.00	89.880	3.220	7013.88	1091.85	916.16	1271.53	40°11'58.490"N	104°37'50.399"W	1.85	



Actual Wellpath Report

HURLEY H26-750 AWP

Page n of nn



REFERENCE WELLPATH IDENTIFICATION			
Operator	NOBLE ENERGY, INC	Slot	SLOT#01 HURLEY H26-750(2366'FNL&1386'FWL, SEC.26)
Area	COLORADO	Well	HURLEY H26-750
Field	WELD COUNTY (NOBLE NAD 83 GRID)	Wellbore	HURLEY H26-750 AWB
Facility	SEC.26-T03N-R65W		

WELLPATH DATA (174 stations)

MD [ft]	Inclination [°]	Azimuth [°]	TVD [ft]	Vert Sect [ft]	North [ft]	East [ft]	Latitude	Longitude	DLS [°/100ft]	Comments
8503.00	89.880	2.360	7014.08	1185.41	1010.05	1276.10	40°11'59.418"N	104°37'50.328"W	0.91	
8598.00	89.750	0.760	7014.39	1279.73	1105.01	1278.69	40°12'00.356"N	104°37'50.283"W	1.69	
8692.00	89.940	358.820	7014.64	1372.67	1199.01	1278.34	40°12'01.284"N	104°37'50.276"W	2.07	
8787.00	89.820	357.660	7014.84	1466.18	1293.96	1275.43	40°12'02.223"N	104°37'50.301"W	1.23	
8881.00	89.850	357.410	7015.11	1558.50	1387.87	1271.38	40°12'03.151"N	104°37'50.341"W	0.27	
8976.00	89.970	356.800	7015.26	1651.66	1482.75	1266.59	40°12'04.089"N	104°37'50.391"W	0.65	
9071.00	89.970	356.900	7015.31	1744.74	1577.61	1261.37	40°12'05.027"N	104°37'50.447"W	0.11	
9165.00	89.970	357.670	7015.36	1836.98	1671.50	1256.91	40°12'05.956"N	104°37'50.492"W	0.82	
9259.00	89.970	358.830	7015.41	1929.51	1765.46	1254.04	40°12'06.884"N	104°37'50.517"W	1.23	
9354.00	89.970	0.170	7015.46	2023.37	1860.45	1253.21	40°12'07.823"N	104°37'50.516"W	1.41	
9448.00	89.910	1.420	7015.56	2116.54	1954.44	1254.52	40°12'08.752"N	104°37'50.487"W	1.33	
9543.00	89.970	1.580	7015.65	2210.86	2049.41	1257.00	40°12'09.690"N	104°37'50.443"W	0.18	
9637.00	89.910	1.960	7015.75	2304.23	2143.36	1259.91	40°12'10.618"N	104°37'50.394"W	0.41	
9732.00	89.820	3.490	7015.98	2398.76	2238.25	1264.42	40°12'11.555"N	104°37'50.324"W	1.61	
9826.00	90.030	4.200	7016.10	2492.47	2332.04	1270.73	40°12'12.481"N	104°37'50.231"W	0.79	
9921.00	89.970	4.110	7016.10	2587.21	2426.79	1277.61	40°12'13.417"N	104°37'50.130"W	0.11	
10015.00	89.780	3.470	7016.31	2680.90	2520.58	1283.82	40°12'14.343"N	104°37'50.038"W	0.71	
10110.00	89.970	2.860	7016.51	2775.51	2615.44	1289.07	40°12'15.280"N	104°37'49.958"W	0.67	
10204.00	89.820	2.740	7016.68	2869.06	2709.32	1293.66	40°12'16.207"N	104°37'49.887"W	0.20	
10299.00	89.820	1.860	7016.98	2963.52	2804.25	1297.47	40°12'17.145"N	104°37'49.826"W	0.93	
10393.00	89.910	2.590	7017.20	3056.98	2898.17	1301.12	40°12'18.073"N	104°37'49.767"W	0.78	
10488.00	90.120	2.050	7017.18	3151.45	2993.10	1304.97	40°12'19.010"N	104°37'49.706"W	0.61	
10583.00	90.030	0.930	7017.06	3245.76	3088.06	1307.44	40°12'19.948"N	104°37'49.662"W	1.18	
10677.00	90.030	359.400	7017.01	3338.79	3182.06	1307.71	40°12'20.877"N	104°37'49.647"W	1.63	
10772.00	90.060	357.710	7016.93	3432.39	3277.03	1305.31	40°12'21.816"N	104°37'49.665"W	1.78	
10867.00	89.820	356.910	7017.03	3525.62	3371.92	1300.86	40°12'22.754"N	104°37'49.711"W	0.88	
10961.00	89.910	358.030	7017.25	3617.91	3465.83	1296.71	40°12'23.682"N	104°37'49.753"W	1.20	
11056.00	89.850	358.180	7017.45	3711.39	3560.77	1293.56	40°12'24.621"N	104°37'49.781"W	0.17	
11150.00	89.940	358.480	7017.62	3803.94	3654.73	1290.83	40°12'25.550"N	104°37'49.804"W	0.33	
11245.00	89.850	358.360	7017.80	3897.51	3749.70	1288.21	40°12'26.488"N	104°37'49.826"W	0.16	
11340.00	89.850	357.450	7018.05	3990.92	3844.63	1284.73	40°12'27.427"N	104°37'49.859"W	0.96	
11434.00	89.970	355.290	7018.19	4082.86	3938.44	1278.78	40°12'28.354"N	104°37'49.924"W	2.30	
11529.00	89.780	356.520	7018.40	4175.61	4033.19	1272.00	40°12'29.291"N	104°37'49.999"W	1.31	
11624.00	89.780	358.830	7018.77	4268.95	4128.11	1268.14	40°12'30.229"N	104°37'50.037"W	2.43	
11718.00	89.880	0.230	7019.05	4361.82	4222.10	1267.37	40°12'31.158"N	104°37'50.035"W	1.49	
11812.00	89.720	0.130	7019.37	4454.86	4316.10	1267.67	40°12'32.087"N	104°37'50.019"W	0.20	
11907.00	89.970	0.220	7019.63	4548.88	4411.10	1267.96	40°12'33.026"N	104°37'50.004"W	0.28	
12001.00	89.750	0.430	7019.86	4641.95	4505.10	1268.49	40°12'33.955"N	104°37'49.985"W	0.32	
12096.00	89.630	0.840	7020.37	4736.08	4600.09	1269.54	40°12'34.893"N	104°37'49.959"W	0.45	
12191.00	89.850	1.650	7020.81	4830.34	4695.07	1271.61	40°12'35.831"N	104°37'49.921"W	0.88	
12285.00	89.750	1.600	7021.13	4923.69	4789.03	1274.27	40°12'36.760"N	104°37'49.874"W	0.12	
12380.00	89.690	1.740	7021.60	5018.04	4883.99	1277.04	40°12'37.698"N	104°37'49.827"W	0.16	
12475.00	89.780	1.490	7022.04	5112.37	4978.95	1279.72	40°12'38.636"N	104°37'49.780"W	0.28	
12569.00	89.820	0.600	7022.37	5205.60	5072.93	1281.43	40°12'39.564"N	104°37'49.746"W	0.95	
12664.00	89.940	1.190	7022.56	5299.79	5167.92	1282.92	40°12'40.503"N	104°37'49.715"W	0.63	



Actual Wellpath Report

HURLEY H26-750 AWP

Page n of nn



REFERENCE WELLPATH IDENTIFICATION

Operator	NOBLE ENERGY, INC	Slot	SLOT#01 HURLEY H26-750(2366'FNL&1386'FWL,SEC.26)
Area	COLORADO	Well	HURLEY H26-750
Field	WELD COUNTY (NOBLE NAD 83 GRID)	Wellbore	HURLEY H26-750 AWB
Facility	SEC.26-T03N-R65W		

WELLPATH DATA (174 stations)

MD [ft]	Inclination [°]	Azimuth [°]	TVD [ft]	Vert Sect [ft]	North [ft]	East [ft]	Latitude	Longitude	DLS [°/100ft]	Comments
12758.00	90.000	2.080	7022.61	5393.13	5261.88	1285.60	40°12'41.431"N	104°37'49.669"W	0.95	
12853.00	89.880	2.720	7022.71	5487.62	5356.80	1289.58	40°12'42.369"N	104°37'49.605"W	0.69	
12948.00	90.000	3.410	7022.81	5582.20	5451.66	1294.66	40°12'43.305"N	104°37'49.528"W	0.74	
13042.00	89.850	3.370	7022.94	5675.85	5545.50	1300.22	40°12'44.232"N	104°37'49.444"W	0.17	
13137.00	89.940	2.630	7023.11	5770.43	5640.36	1305.19	40°12'45.169"N	104°37'49.368"W	0.78	
13231.00	89.970	0.400	7023.18	5863.75	5734.33	1307.67	40°12'46.097"N	104°37'49.324"W	2.37	
13326.00	89.820	359.510	7023.36	5957.72	5829.32	1307.60	40°12'47.036"N	104°37'49.313"W	0.95	
13420.00	89.750	359.520	7023.71	6050.59	5923.32	1306.80	40°12'47.965"N	104°37'49.312"W	0.08	
13515.00	89.910	358.320	7023.99	6144.29	6018.30	1305.01	40°12'48.904"N	104°37'49.323"W	1.27	
13609.00	90.030	356.630	7024.04	6236.59	6112.21	1300.87	40°12'49.832"N	104°37'49.364"W	1.80	
13703.00	89.910	354.550	7024.09	6328.25	6205.92	1293.64	40°12'50.759"N	104°37'49.446"W	2.22	
13798.00	89.820	354.140	7024.31	6420.41	6300.46	1284.28	40°12'51.694"N	104°37'49.554"W	0.44	
13893.00	89.910	354.510	7024.54	6512.56	6394.99	1274.89	40°12'52.629"N	104°37'49.663"W	0.40	
13987.00	89.970	357.030	7024.64	6604.29	6488.73	1267.96	40°12'53.556"N	104°37'49.741"W	2.68	
14082.00	89.880	359.510	7024.76	6697.80	6583.68	1265.09	40°12'54.494"N	104°37'49.766"W	2.61	
14176.00	89.970	1.090	7024.88	6790.86	6677.68	1265.58	40°12'55.423"N	104°37'49.748"W	1.68	
14271.00	90.000	1.270	7024.91	6885.11	6772.66	1267.54	40°12'56.361"N	104°37'49.711"W	0.19	
14366.00	89.970	2.560	7024.93	6979.50	6867.60	1270.71	40°12'57.299"N	104°37'49.658"W	1.36	
14460.00	89.970	3.010	7024.98	7073.05	6961.49	1275.28	40°12'58.227"N	104°37'49.587"W	0.48	
14555.00	89.910	3.020	7025.08	7167.64	7056.36	1280.28	40°12'59.164"N	104°37'49.510"W	0.06	
14650.00	90.000	3.190	7025.16	7262.23	7151.22	1285.42	40°13'00.101"N	104°37'49.432"W	0.20	
14744.00	90.030	2.440	7025.13	7355.79	7245.10	1290.04	40°13'01.028"N	104°37'49.361"W	0.80	
14839.00	89.820	1.820	7025.26	7450.22	7340.04	1293.57	40°13'01.966"N	104°37'49.303"W	0.69	
14933.00	89.970	1.020	7025.43	7543.53	7434.01	1295.90	40°13'02.894"N	104°37'49.261"W	0.87	
15028.00	90.090	1.060	7025.38	7637.75	7528.99	1297.62	40°13'03.832"N	104°37'49.227"W	0.13	
15122.00	89.780	0.300	7025.49	7730.90	7622.98	1298.74	40°13'04.761"N	104°37'49.201"W	0.87	
15217.00	90.000	358.740	7025.67	7824.76	7717.98	1297.94	40°13'05.700"N	104°37'49.199"W	1.66	
15312.00	90.030	358.120	7025.64	7918.33	7812.94	1295.34	40°13'06.638"N	104°37'49.221"W	0.65	
15406.00	89.940	357.950	7025.67	8010.79	7906.89	1292.12	40°13'07.567"N	104°37'49.250"W	0.20	
15501.00	89.910	357.010	7025.79	8104.08	8001.79	1287.94	40°13'08.505"N	104°37'49.292"W	0.99	
15595.00	89.940	356.980	7025.92	8196.22	8095.66	1283.01	40°13'09.433"N	104°37'49.344"W	0.05	
15690.00	89.970	357.260	7025.99	8289.39	8190.54	1278.24	40°13'10.371"N	104°37'49.393"W	0.30	
15784.00	89.880	358.720	7026.11	8381.85	8284.48	1274.94	40°13'11.300"N	104°37'49.424"W	1.56	
15879.00	89.720	359.210	7026.44	8475.56	8379.47	1273.23	40°13'12.239"N	104°37'49.434"W	0.54	
15973.00	89.850	358.800	7026.80	8568.31	8473.45	1271.59	40°13'13.167"N	104°37'49.443"W	0.46	
16068.00	89.820	358.900	7027.07	8661.99	8568.43	1269.69	40°13'14.106"N	104°37'49.456"W	0.11	
16162.00	89.850	357.670	7027.34	8754.53	8662.39	1266.87	40°13'15.035"N	104°37'49.480"W	1.31	
16257.00	90.150	357.850	7027.34	8847.90	8757.32	1263.16	40°13'15.973"N	104°37'49.516"W	0.37	Last BHI MWD Survey
16310.00	90.150	357.850	7027.20	8900.01	8810.28	1261.17	40°13'16.497"N	104°37'49.535"W	0.00	Projection to Bit



Actual Wellpath Report

HURLEY H26-750 AWP

Page n of nn



REFERENCE WELLPATH IDENTIFICATION

Operator	NOBLE ENERGY, INC	Slot	SLOT#01 HURLEY H26-750(2366'FNL&1386'FWL,SEC.26)
Area	COLORADO	Well	HURLEY H26-750
Field	WELD COUNTY (NOBLE NAD 83 GRID)	Wellbore	HURLEY H26-750 AWB
Facility	SEC.26-T03N-R65W		

HOLE & CASING SECTIONS - Ref Wellbore: HURLEY H26-750 AWB Ref Wellpath: HURLEY H26-750 AWP

String/Diameter	Start MD [ft]	End MD [ft]	Interval [ft]	Start TVD [ft]	End TVD [ft]	Start N/S [ft]	Start E/W [ft]	End N/S [ft]	End E/W [ft]
13.5in Open Hole	30.00	1935.00	1905.00	30.00	1934.96	0.01	-0.02	6.35	-2.67
9.625in Casing Surface	30.00	1935.00	1905.00	30.00	1934.96	0.01	-0.02	6.35	-2.67
8.5in Open Hole	1935.00	16310.00	14375.00	1934.96	7027.20	6.35	-2.67	8810.28	1261.17

TARGETS

Name	TVD [ft]	North [ft]	East [ft]	Grid East [US ft]	Grid North [US ft]	Latitude	Longitude	Shape
SECTION 14-T03N-R65W	0.00	-0.44	-44.69	3241514.12	1315823.44	40°11'49.560"N	104°38'07.476"W	polygon
SECTION 23-T03N-R65W	0.00	-0.44	-44.69	3241514.12	1315823.44	40°11'49.560"N	104°38'07.476"W	polygon
SECTION 26-T03N-R65W	0.00	-0.44	-44.69	3241514.12	1315823.44	40°11'49.560"N	104°38'07.476"W	polygon
HURLEY H26-750 LANDING POINT	7014.00	90.00	1275.00	3242833.75	1315913.87	40°11'50.326"N	104°37'50.459"W	point
HURLEY H26-750 REV-1 BHL (1170'FSL&2595'FEL,SEC.14)	7029.22	8810.97	1299.25	3242858.01	1324634.46	40°13'16.500"N	104°37'49.044"W	point

WELLPATH COMPOSITION - Ref Wellbore: HURLEY H26-750 AWB Ref Wellpath: HURLEY H26-750 AWP

Start MD [ft]	End MD [ft]	Positional Uncertainty Model	Log Name/Comment	Wellbore
0.00	1934.00	Gyrodata standard - Drop gyro or Multi-shot	3rd Party Surface Gyros <87'-1934'>	HURLEY H26-750 AWB
1934.00	16257.00	OWSG MWD rev2 + IFR1 + Multi-Station Correction	BH/ATCurve 8.5" Hole OWSG MWD+IFR1+MSA<1981'-16257'>	HURLEY H26-750 AWB
16257.00	16310.00	Blind Drilling (std)	Projection to bit	HURLEY H26-750 AWB