

Company Name: Laramie Energy, LLC
BCU 0993-21-09W
Mesa County, CO
Rig: H&P #522
Created By: Will Jircik
Date: 09/01/2018

BCU 0993-21-09W
Mesa County, CO
Q181113 & RM-180932
Design #2

PROJECT DETAILS:	Mesa County, CO
Geodetic System:	US State Plane 1983
Datum:	North American Datum 1983
Ellipsoid:	GRS 1980
Zone:	Colorado Central Zone
System Datum:	Mean Sea Level

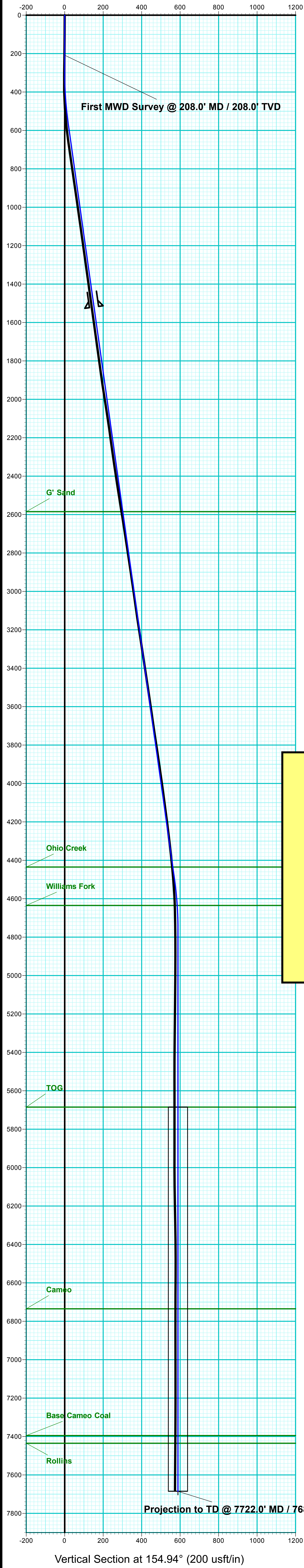


DESIGN TARGET DETAILS								
Name	TVD	+N/-S	+E/-W	Northing	Easting	Latitude	Longitude	Shape
PBHL - BCU 0993-21-09W	7685.0	-533.6	249.4	1529095.41	2354734.57	39.263875	-107.779273	Circle (Radius: 50.0)

DESIGN ANNOTATIONS									
MD	Inc	Azi	TVD	+N/-S	+E/-W	VSect	Departure	Annotation	
300.0	0.00	0.00	300.0	0.0	0.0	0.0	0.0	KOP/ (Build 3.00°/100')	
566.5	8.00	154.94	565.7	-16.8	7.9	18.6	18.6	EOB @ 8.00° Inc / 154.94° Azm	
4533.8	8.00	154.94	4494.3	-516.7	241.6	570.4	570.4	Drop @ 3.00°/100'	
4800.3	0.00	0.00	4760.0	-533.6	249.4	589.0	589.0	EOD @ Vertical	
7725.3	0.00	0.00	7685.0	-533.6	249.4	589.0	589.0	TD @ 7725.3' MD / 7685.0' TVD	

WELL DETAILS: BCU 0993-21-09W					
			7257.0		
+N/-S	+E/-W	Northing	Easting	Latitude	Longitude
0.0	0.0	1529635.06	2354498.60	39.265340	-107.780154

FORMATION TOP DETAILS			
TVDPath	MDPath	Formation	
2585.0	2605.7	G' Sand	
4435.0	4473.9	Ohio Creek	
4635.0	4675.2	Williams Fork	
5685.0	5725.3	TOG	
6735.0	6775.3	Cameo	
7395.0	7435.3	Base Cameo Coal	
7435.0	7475.3	Rollins	



T

M

Azimuths to True North
Magnetic North: 9.48°

Strength: 51394.3snT
Dip Angle: 65.43°
Date: 8/9/2018
Model: USER DEFINED

