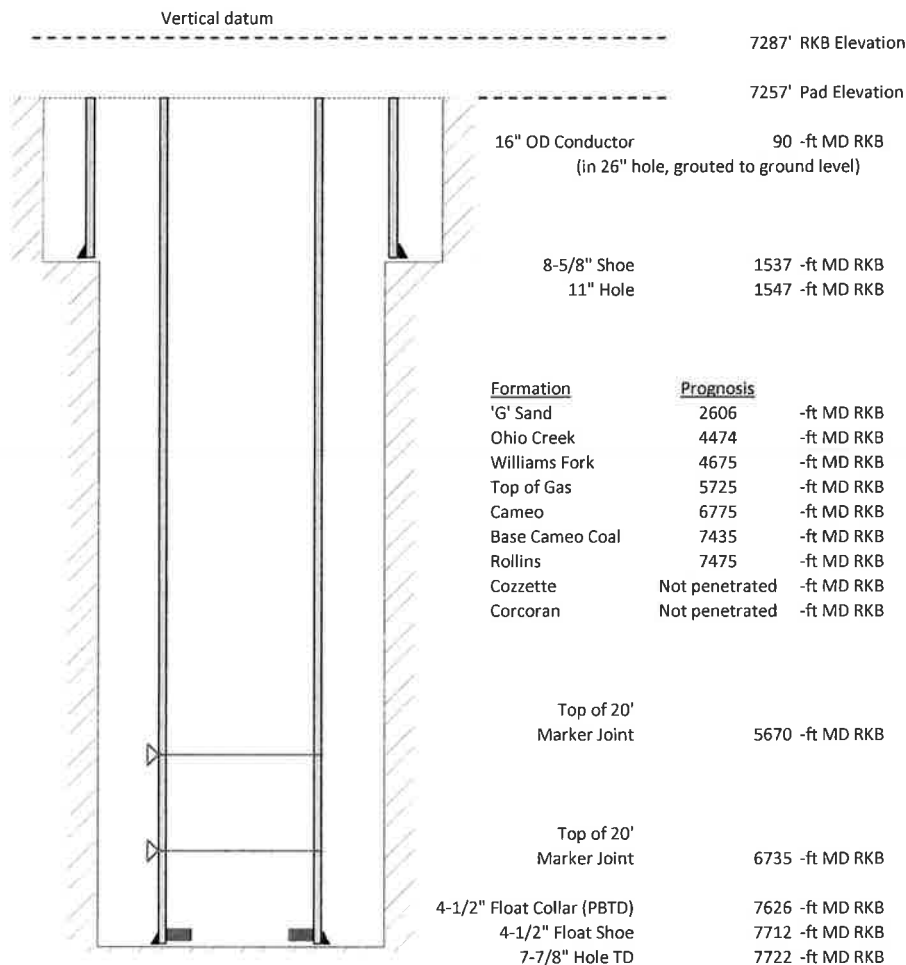


Laramie Energy, LLC
BCU 0993-21-09W
Slot B-9
H&P 522 (30-ft KB)

API #: 05-077-10520-00
 SW/4 NW/4 S13/T9S/R94W/6th PM
 Mesa County, CO
 Date of diagram: 8/30/2018



Cementing details

8-5/8" 24# Surface Csg	Lead	Tail
Density (ppg)	12.3	12.8
Volume (sx)	177	100
Yield (cf/sx)	2.45	2.18
Top (ft RKB)	30	1030
Bottom (ft RKB)	1030	1537
Returns (full or partial)	Full	Full

4-1/2" 11.6# Prod Csg	Lead	Tail
Density (ppg)	12.5	13.3
Volume (sx)	645	350
Yield (cf/sx)	1.94	1.73
Est Top (ft RKB)	1030	5525
Est Bottom (ft RKB)	5525	7712
Returns (full or partial)	Full	Full

Displacement
8.3 ppg
119 bbls

Other Remarks: Surface- 25 bbls cement to surface Production-40 bbls
 spacer to surface