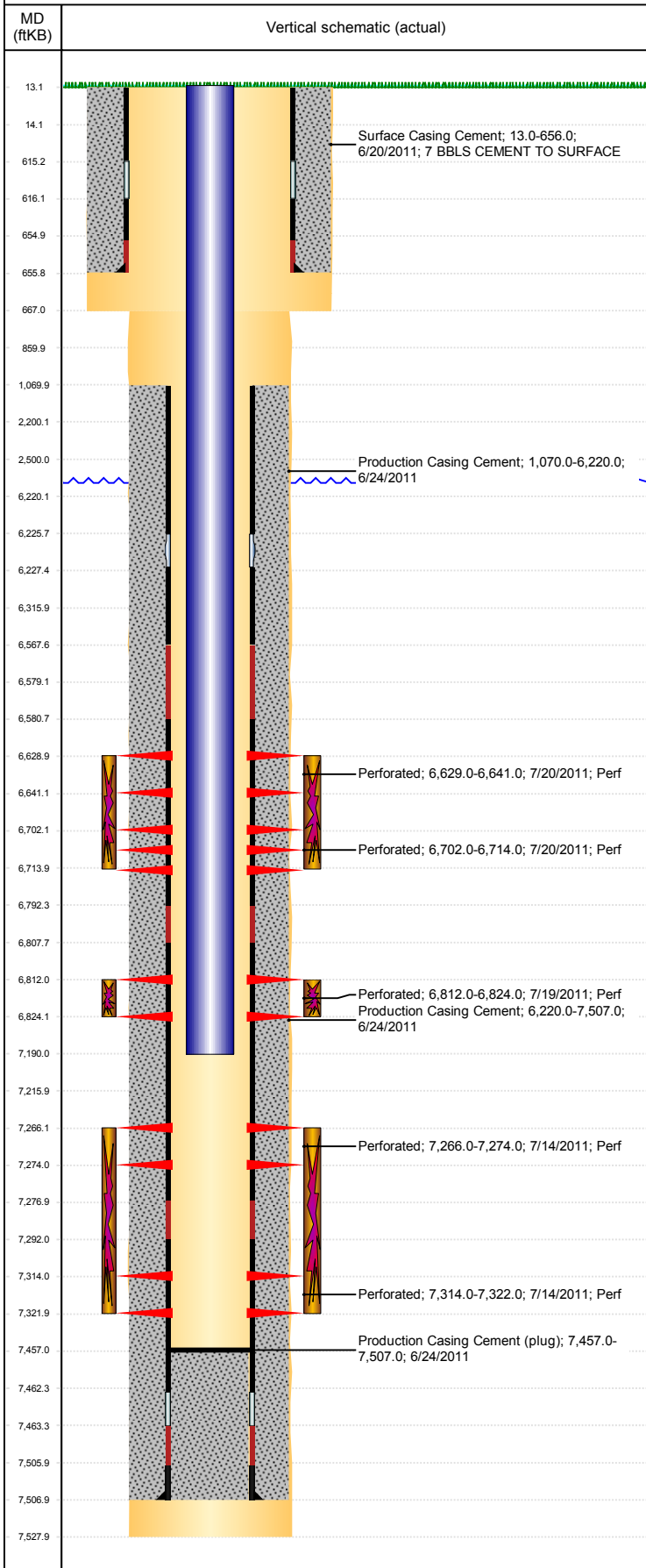


Well Name: CARMIN USX CC05-16D

DEVIATED, ORIGINAL HOLE, 12/10/2018 3:49:04 PM



Well Header									
API 05-123-33505			Business Unit DJ BASIN			District 15		Well Config DEVIATED	
KB - GL / MSL (ft... 13.00		Spud Date 6/20/2011		P & A Date		Well Production Status PR			SoRT No
Comment NO OPEN HOLE LOGS RUN ON THIS WELL									
Surface Location (Congressional)									
Qtr 3 NE	Qtr 4 SE	Section 5	Twonshp 4	Twonsh... N	Range 63	Rng E/... W	Actual Latitude (°) 40.33952922	Actual Longitude (°) -104.45438827	
Wellbore Sections									
Section Des			Size (in)			Act Top, MD (ftKB)		Act Btm, MD (ftKB)	
SURFACE			12 1/4			13		667	
PRODUCTION			7 7/8			667		7,528	
Casing Strings									
Csg Des			Run Date		OD (in)	Wt/Len (lb/ft)	Grade	Top, MD (ftKB)	MD (ftKB)
Surface			6/20/2011		8 5/8	24.00	J-55	13.0	656.0
PRODUCTION			6/24/2011		4 1/2	11.60	M-80	13.0	7,507.0
Cement									
Des					Start Date		Top (ftKB)		Btm (ftKB)
Surface Casing Cement					6/20/2011		13.0		656.0
Production Casing Cement					6/24/2011		1,070.0		6,220.0
Production Casing Cement					6/24/2011		6,220.0		7,507.0
Zone Statuses									
Zone Name	Status Date	Status	Fluid Type	Job				Prod Method	
NIOBRARA	8/5/2011	PR		DRILLING/COMPLETION - ORIGINAL, 6/19/2011...					
CODELL	8/5/2011	PR		DRILLING/COMPLETION - ORIGINAL, 6/19/2011...					
J SAND	8/5/2011	PR		DRILLING/COMPLETION - ORIGINAL, 6/19/2011...					
Perforation Data									
Linked Zone		Bnch/Stg	Entered Shot Total	Top (ftKB)		Btm (ftKB)		Date	
NIOBRARA, ORIGINAL HOLE		B	24	6,629.00		6,641.00		7/20/2011	
NIOBRARA, ORIGINAL HOLE		C	24	6,702.00		6,714.00		7/20/2011	
CODELL, ORIGINAL HOLE			24	6,812.00		6,824.00		7/19/2011	
J SAND, ORIGINAL HOLE			32	7,266.00		7,274.00		7/14/2011	
J SAND, ORIGINAL HOLE			32	7,314.00		7,322.00		7/14/2011	
Stimulation Intervals									
Zone			Start Date			Top (ftKB)		Btm (ftKB)	
NIOBRARA, ORIGINAL HOLE			7/21/2011			6,629.0		6,714.0	
CODELL, ORIGINAL HOLE			7/19/2011			6,812.0		6,824.0	
J SAND, ORIGINAL HOLE			7/19/2011			7,266.0		7,322.0	
Other In Hole									
Run Date		Des				OD (in)	Top (ftKB)	Btm (ftKB)	
Logs									
Date		Type					Top, MD (ftKB)		Btm, MD (ftKB)
5/1/2011		Caliper/Comp. Density/Neutron/GR/SP/ML							
5/1/2011		DIL/GR/SP/Caliper							
Plug Back Total Depths									
Date		Type		Com					Depth (ftKB)
7/14/2011		CEMENT PLUG		DEPTH LOGGER					7,447.0
6/20/2012		PLUG REMNANTS							7,457.0