

NOBLE ENERGY, INC

Location: COLORADO Slot: SLOT#43 HURLEY H26-743(2234'FNL&1064'FEL,SEC.26)
Field: WELD COUNTY (NOBLE NAD 83 GRID) Well: HURLEY H26-743
Facility: SEC.26-T03N-R65W Wellbore: HURLEY H26-743 PWB

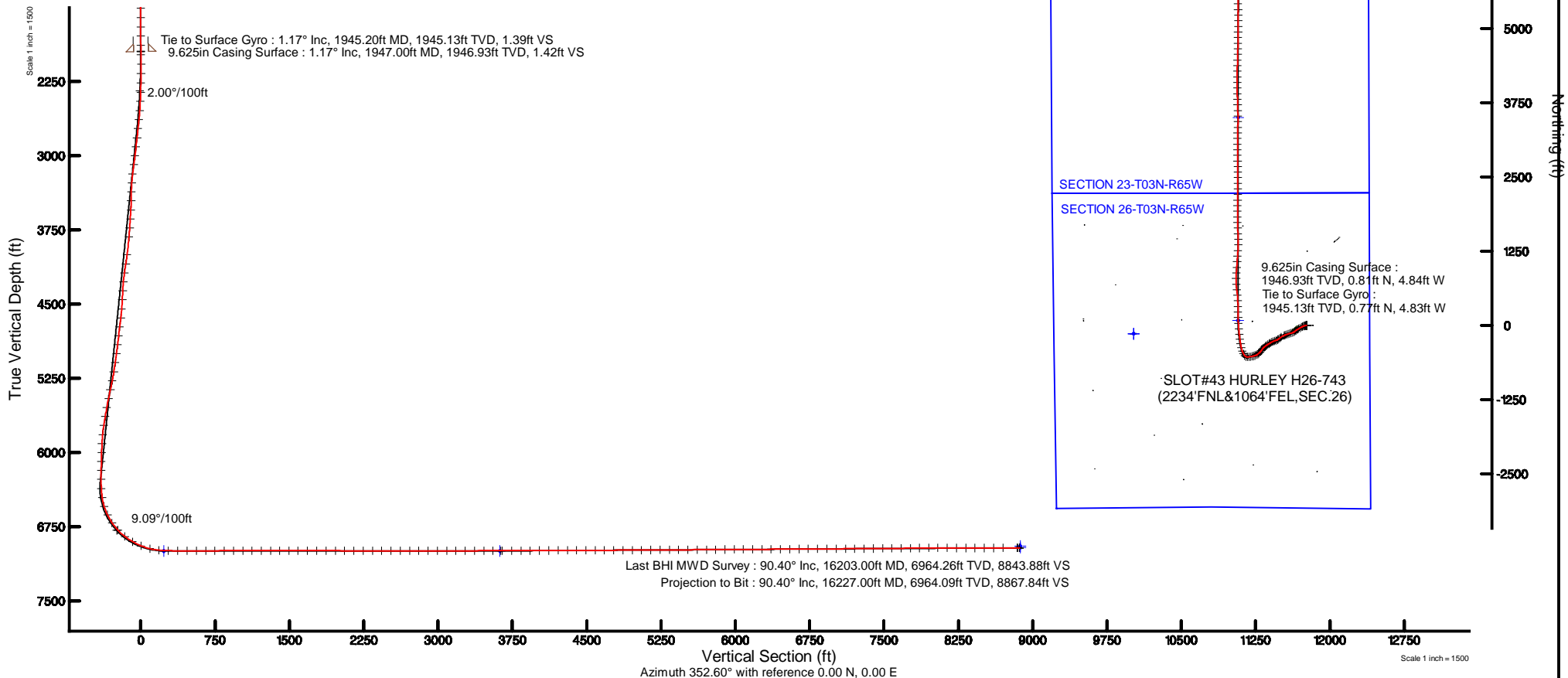
Plot reference wellpath is HURLEY H26-743 (REV-B.0) PWP	Grid System: NAD83 / Lambert Colorado SP, Northern Zone (501), US feet
True vertical depths are referenced to RIG (30'KB) (RKB)	* = Wellpath was transformed from a different geodetic datum
Measured depths are referenced to RIG (30'KB) (RKB)	North Reference: Grid north
RIG (30'KB) (RKB) to Mean Sea Level: 4885 feet	Scale: True distance
Mean Sea Level to Ground level (At Slot: SLOT#43 HURLEY H26-743(2234'FNL&1064'FEL,SEC.26)): 0 feet	Depths are in feet
Coordinates are in feet referenced to Slot	Created by: guenaler on 2018-08-08
	Database: WA_DEN_Denver_Defn

Survey Program

Start MD (ft)	End MD (ft)	Tool	Model	Log Name/Comment	Wellbore
30.00	16295.27	OWSG MWD rev2	OWSG MWD rev2 + IFR1 + Multi-Station Correction		HURLEY H26-743 PWB

Comments

SURFACE LOCATION: SENE
40.19740N
104.62500W
API: 05-123-46761





Actual Wellpath Report

HURLEY H26-743 AWP

Page 1 of 10



REFERENCE WELLPATH IDENTIFICATION			
Operator	NOBLE ENERGY, INC	Slot	SLOT#43 HURLEY H26-743(2234'FNL&1064'FEL,SEC.26)
Area	COLORADO	Well	HURLEY H26-743
Field	WELD COUNTY (NOBLE NAD 83 GRID)	Wellbore	HURLEY H26-743 AWB
Facility	SEC.26-T03N-R65W		

REPORT SETUP INFORMATION			
Projection System	NAD83 / Lambert Colorado SP, Northern Zone (501), US feet	Software System	WellArchitect® 5.0
North Reference	Grid	User	Guenaler
Scale	0.999957	Report Generated	8/8/2018 at 9:56:29 AM
Convergence at slot	0.57° East	Database/Source file	WA_DEN_Denver_Defn/HURLEY_H26-743_AWP.xml

WELLPATH LOCATION						
	Local coordinates		Grid coordinates		Geographic coordinates	
	North[ft]	East[ft]	Easting[US ft]	Northing[US ft]	Latitude	Longitude
Slot Location	137.81	2906.88	3244420.87	1315961.25	40°11'50.640"N	104°37'30.000"W
Facility Reference Pt			3241514.12	1315823.44	40°11'49.560"N	104°38'07.476"W
Field Reference Pt			3000000.00	4454105.15	48°46'34.315"N	105°30'00.000"W

WELLPATH DATUM			
Calculation method	Minimum curvature	RIG (30'KB) (RKB) to Facility Vertical Datum	4885.00ft
Horizontal Reference Pt	Slot	RIG (30'KB) (RKB) to Mean Sea Level	4885.00ft
Vertical Reference Pt	RIG (30'KB) (RKB)	RIG (30'KB) (RKB) to Ground Level at Slot (SLOT#43 HURLEY H26-743 (2234'FNL&1064'FEL,SEC.26))	4885.00ft
MD Reference Pt	RIG (30'KB) (RKB)	Section Origin	N 0.00, E 0.00 ft
Field Vertical Reference	Mean Sea Level	Section Azimuth	352.60°



Actual Wellpath Report

HURLEY H26-743 AWP



REFERENCE WELLPATH IDENTIFICATION			
Operator	NOBLE ENERGY, INC	Slot	SLOT#43 HURLEY H26-743(2234'FNL&1064'FEL,SEC.26)
Area	COLORADO	Well	HURLEY H26-743
Field	WELD COUNTY (NOBLE NAD 83 GRID)	Wellbore	HURLEY H26-743 AWB
Facility	SEC.26-T03N-R65W		

WELLPATH DATA (173 stations)										
MD [ft]	Inclination [°]	Azimuth [°]	TVD [ft]	Vert Sect [ft]	North [ft]	East [ft]	Latitude	Longitude	DLS [°/100ft]	Comments
0.00	0.000	18.110	0.00	0.00	0.00	0.00	40°11'50.640"N	104°37'30.000"W	0.00	
88.56	0.270	18.110	88.56	0.19	0.20	0.06	40°11'50.642"N	104°37'29.999"W	0.30	
183.81	0.330	41.590	183.81	0.57	0.62	0.32	40°11'50.646"N	104°37'29.996"W	0.14	
278.23	0.640	32.530	278.22	1.15	1.26	0.78	40°11'50.652"N	104°37'29.990"W	0.34	
372.88	0.380	71.220	372.87	1.62	1.81	1.36	40°11'50.658"N	104°37'29.982"W	0.44	
467.42	0.260	58.990	467.41	1.77	2.02	1.84	40°11'50.660"N	104°37'29.976"W	0.15	
561.91	0.450	131.270	561.90	1.58	1.89	2.31	40°11'50.658"N	104°37'29.970"W	0.47	
656.55	0.050	358.540	656.54	1.34	1.68	2.58	40°11'50.656"N	104°37'29.966"W	0.51	
750.97	0.270	266.030	750.96	1.39	1.71	2.36	40°11'50.657"N	104°37'29.969"W	0.29	
845.47	0.450	230.270	845.46	1.21	1.46	1.85	40°11'50.654"N	104°37'29.976"W	0.30	
940.04	0.410	183.510	940.02	0.68	0.88	1.55	40°11'50.649"N	104°37'29.980"W	0.36	
1034.47	0.440	190.310	1034.45	0.00	0.19	1.46	40°11'50.642"N	104°37'29.981"W	0.06	
1128.82	0.290	228.620	1128.80	-0.48	-0.33	1.22	40°11'50.637"N	104°37'29.984"W	0.29	
1223.58	0.220	229.030	1223.56	-0.71	-0.60	0.90	40°11'50.634"N	104°37'29.988"W	0.07	
1317.97	0.550	226.920	1317.95	-1.08	-1.03	0.43	40°11'50.630"N	104°37'29.995"W	0.35	
1412.63	0.600	249.280	1412.60	-1.46	-1.52	-0.36	40°11'50.625"N	104°37'30.005"W	0.24	
1507.03	0.470	269.160	1507.00	-1.53	-1.70	-1.21	40°11'50.623"N	104°37'30.016"W	0.24	
1601.56	0.450	274.070	1601.52	-1.41	-1.68	-1.97	40°11'50.624"N	104°37'30.026"W	0.05	
1696.10	0.770	256.500	1696.06	-1.40	-1.80	-2.96	40°11'50.623"N	104°37'30.038"W	0.39	
1790.54	0.670	326.240	1790.49	-0.98	-1.49	-3.88	40°11'50.626"N	104°37'30.050"W	0.88	
1885.00	0.960	340.380	1884.94	0.29	-0.28	-4.46	40°11'50.638"N	104°37'30.057"W	0.37	
1945.20	1.170	340.900	1945.13	1.39	0.77	-4.83	40°11'50.648"N	104°37'30.062"W	0.35	Tie to Surface Gyro
1981.00	1.130	328.750	1980.93	2.07	1.42	-5.13	40°11'50.655"N	104°37'30.066"W	0.69	
2075.00	2.990	264.810	2074.87	3.01	1.99	-8.05	40°11'50.660"N	104°37'30.103"W	2.86	
2170.00	5.820	253.730	2169.58	2.36	0.42	-15.14	40°11'50.646"N	104°37'30.195"W	3.10	
2264.00	7.280	251.380	2262.96	0.47	-2.82	-25.36	40°11'50.615"N	104°37'30.327"W	1.58	
2359.00	8.810	252.020	2357.03	-2.04	-6.99	-37.99	40°11'50.575"N	104°37'30.490"W	1.61	
2453.00	9.750	250.120	2449.80	-5.08	-11.92	-52.32	40°11'50.527"N	104°37'30.676"W	1.05	
2548.00	12.160	242.440	2543.06	-10.27	-19.28	-68.76	40°11'50.456"N	104°37'30.888"W	2.96	
2642.00	14.830	238.230	2634.46	-18.65	-30.20	-87.77	40°11'50.350"N	104°37'31.135"W	3.02	



Actual Wellpath Report

HURLEY H26-743 AWP



REFERENCE WELLPATH IDENTIFICATION			
Operator	NOBLE ENERGY, INC	Slot	SLOT#43 HURLEY H26-743(2234'FNL&1064'FEL,SEC.26)
Area	COLORADO	Well	HURLEY H26-743
Field	WELD COUNTY (NOBLE NAD 83 GRID)	Wellbore	HURLEY H26-743 AWB
Facility	SEC.26-T03N-R65W		

WELLPATH DATA (173 stations)										
MD [ft]	Inclination [°]	Azimuth [°]	TVD [ft]	Vert Sect [ft]	North [ft]	East [ft]	Latitude	Longitude	DLS [°/100ft]	Comments
2737.00	15.300	240.840	2726.20	-28.32	-42.71	-109.05	40°11'50.229"N	104°37'31.411"W	0.87	
2831.00	15.450	240.120	2816.83	-37.70	-54.99	-130.74	40°11'50.109"N	104°37'31.692"W	0.26	
2926.00	15.720	238.060	2908.34	-47.89	-68.10	-152.63	40°11'49.982"N	104°37'31.975"W	0.65	
3020.00	15.510	234.210	2998.87	-59.15	-82.19	-173.63	40°11'49.845"N	104°37'32.248"W	1.12	
3115.00	15.100	232.700	3090.50	-71.36	-97.12	-193.78	40°11'49.699"N	104°37'32.509"W	0.60	
3210.00	13.380	233.240	3182.58	-82.92	-111.19	-212.43	40°11'49.562"N	104°37'32.752"W	1.82	
3304.00	14.880	247.780	3273.76	-91.35	-122.27	-232.32	40°11'49.454"N	104°37'33.009"W	4.09	
3399.00	15.640	258.680	3365.43	-95.35	-129.40	-256.17	40°11'49.386"N	104°37'33.318"W	3.12	
3493.00	16.150	258.190	3455.84	-97.22	-134.56	-281.40	40°11'49.338"N	104°37'33.643"W	0.56	
3588.00	15.880	248.360	3547.17	-101.44	-142.06	-306.41	40°11'49.266"N	104°37'33.967"W	2.87	
3682.00	16.020	252.420	3637.55	-106.89	-150.72	-330.73	40°11'49.183"N	104°37'34.281"W	1.20	
3777.00	16.040	248.410	3728.86	-112.43	-159.51	-355.44	40°11'49.098"N	104°37'34.600"W	1.17	
3871.00	16.100	246.260	3819.19	-119.28	-169.54	-379.44	40°11'49.002"N	104°37'34.911"W	0.64	
4060.00	16.140	236.050	4000.80	-138.40	-194.76	-425.23	40°11'48.757"N	104°37'35.504"W	1.50	
4155.00	16.060	230.370	4092.08	-151.32	-210.52	-446.31	40°11'48.603"N	104°37'35.778"W	1.66	
4249.00	15.450	230.270	4182.54	-164.95	-226.81	-465.95	40°11'48.444"N	104°37'36.033"W	0.65	
4344.00	15.100	243.890	4274.22	-175.69	-240.35	-486.80	40°11'48.312"N	104°37'36.303"W	3.79	
4438.00	15.910	250.510	4364.80	-182.32	-250.04	-509.94	40°11'48.219"N	104°37'36.603"W	2.07	
4533.00	16.140	253.770	4456.11	-187.07	-258.08	-534.89	40°11'48.142"N	104°37'36.926"W	0.98	
4628.00	16.200	246.720	4547.36	-192.73	-267.00	-559.75	40°11'48.056"N	104°37'37.247"W	2.07	
4722.00	16.220	239.100	4637.64	-201.56	-278.93	-583.06	40°11'47.941"N	104°37'37.549"W	2.26	
4816.00	16.070	236.040	4727.93	-212.61	-292.94	-605.12	40°11'47.804"N	104°37'37.835"W	0.92	
4911.00	16.150	242.040	4819.21	-223.13	-306.48	-627.70	40°11'47.673"N	104°37'38.127"W	1.75	
5006.00	16.120	238.190	4910.47	-233.22	-319.63	-650.57	40°11'47.545"N	104°37'38.424"W	1.13	
5100.00	16.000	233.240	5000.80	-244.97	-334.26	-672.04	40°11'47.402"N	104°37'38.702"W	1.46	
5195.00	16.060	232.140	5092.11	-258.05	-350.16	-692.91	40°11'47.247"N	104°37'38.973"W	0.33	
5289.00	15.950	226.230	5182.47	-272.31	-367.08	-712.50	40°11'47.082"N	104°37'39.228"W	1.74	
5384.00	16.000	220.730	5273.81	-288.79	-386.03	-730.47	40°11'46.897"N	104°37'39.462"W	1.59	
5478.00	15.930	216.210	5364.19	-306.78	-406.25	-746.54	40°11'46.698"N	104°37'39.672"W	1.32	
5573.00	16.050	216.980	5455.51	-325.60	-427.26	-762.15	40°11'46.492"N	104°37'39.875"W	0.26	



Actual Wellpath Report
HURLEY H26-743 AWP
Page 4 of 10



REFERENCE WELLPATH IDENTIFICATION			
Operator	NOBLE ENERGY, INC	Slot	SLOT#43 HURLEY H26-743(2234'FNL&1064'FEL,SEC.26)
Area	COLORADO	Well	HURLEY H26-743
Field	WELD COUNTY (NOBLE NAD 83 GRID)	Wellbore	HURLEY H26-743 AWB
Facility	SEC.26-T03N-R65W		

WELLPATH DATA (173 stations)										
MD [ft]	Inclination [°]	Azimuth [°]	TVD [ft]	Vert Sect [ft]	North [ft]	East [ft]	Latitude	Longitude	DLS [°/100ft]	Comments
5667.00	15.940	222.330	5545.88	-343.24	-447.19	-778.65	40°11'46.297"N	104°37'40.091"W	1.57	
5762.00	15.970	226.670	5637.22	-359.34	-465.80	-796.95	40°11'46.115"N	104°37'40.329"W	1.26	
5856.00	16.470	232.190	5727.48	-373.67	-482.84	-816.88	40°11'45.948"N	104°37'40.588"W	1.72	
5951.00	16.440	242.390	5818.61	-385.14	-497.33	-839.44	40°11'45.807"N	104°37'40.880"W	3.04	
6045.00	16.500	252.990	5908.78	-391.97	-507.40	-864.00	40°11'45.710"N	104°37'41.198"W	3.19	
6140.00	16.500	255.090	5999.87	-395.98	-514.82	-889.93	40°11'45.639"N	104°37'41.533"W	0.63	
6234.00	16.450	258.640	6090.01	-398.65	-520.88	-915.88	40°11'45.582"N	104°37'41.868"W	1.07	
6329.00	16.530	261.340	6181.10	-399.88	-525.56	-942.43	40°11'45.538"N	104°37'42.211"W	0.81	
6423.00	16.660	262.880	6271.19	-400.11	-529.25	-969.02	40°11'45.505"N	104°37'42.554"W	0.49	
6518.00	13.810	269.280	6362.85	-398.72	-531.08	-993.88	40°11'45.489"N	104°37'42.875"W	3.48	
6612.00	15.680	298.170	6453.87	-390.02	-525.21	-1016.33	40°11'45.549"N	104°37'43.163"W	7.98	
6706.00	20.680	314.460	6543.20	-369.55	-507.57	-1039.40	40°11'45.726"N	104°37'43.458"W	7.54	
6801.00	26.960	330.220	6630.16	-336.38	-477.07	-1062.11	40°11'46.029"N	104°37'43.747"W	9.36	
6896.00	34.890	341.660	6711.66	-289.68	-432.48	-1081.41	40°11'46.472"N	104°37'43.990"W	10.36	
6990.00	43.640	348.250	6784.40	-230.80	-375.07	-1096.51	40°11'47.040"N	104°37'44.177"W	10.30	
7085.00	51.660	351.810	6848.35	-160.73	-305.97	-1108.51	40°11'47.724"N	104°37'44.323"W	8.88	
7179.00	59.880	352.920	6901.18	-83.08	-229.00	-1118.79	40°11'48.486"N	104°37'44.446"W	8.80	
7274.00	67.350	353.210	6943.37	1.96	-144.58	-1129.05	40°11'49.321"N	104°37'44.567"W	7.87	
7368.00	76.620	354.830	6972.41	91.22	-55.77	-1138.32	40°11'50.200"N	104°37'44.676"W	10.00	
7462.00	85.010	356.920	6987.41	183.77	36.69	-1144.97	40°11'51.114"N	104°37'44.750"W	9.19	
7557.00	88.950	357.300	6992.41	278.33	131.42	-1149.75	40°11'52.050"N	104°37'44.799"W	4.17	
7651.00	89.880	358.690	6993.37	371.91	225.36	-1153.04	40°11'52.979"N	104°37'44.830"W	1.78	
7746.00	90.150	0.620	6993.34	466.18	320.35	-1153.61	40°11'53.918"N	104°37'44.825"W	2.05	
7840.00	90.090	357.960	6993.15	559.54	414.33	-1154.78	40°11'54.847"N	104°37'44.828"W	2.83	
7935.00	89.940	354.270	6993.12	654.34	509.10	-1161.21	40°11'55.784"N	104°37'44.899"W	3.89	
8029.00	90.120	352.560	6993.07	748.33	602.48	-1171.99	40°11'56.707"N	104°37'45.026"W	1.83	
8124.00	89.970	356.810	6993.00	843.24	697.05	-1180.79	40°11'57.643"N	104°37'45.128"W	4.48	
8218.00	90.030	0.390	6993.00	936.71	791.00	-1183.09	40°11'58.571"N	104°37'45.145"W	3.81	
8313.00	90.120	3.650	6992.87	1030.42	885.93	-1179.74	40°11'59.509"N	104°37'45.090"W	3.43	
8407.00	90.120	4.570	6992.68	1122.53	979.69	-1173.00	40°12'00.435"N	104°37'44.992"W	0.98	



Actual Wellpath Report

HURLEY H26-743 AWP



REFERENCE WELLPATH IDENTIFICATION			
Operator	NOBLE ENERGY, INC	Slot	SLOT#43 HURLEY H26-743(2234'FNL&1064'FEL,SEC.26)
Area	COLORADO	Well	HURLEY H26-743
Field	WELD COUNTY (NOBLE NAD 83 GRID)	Wellbore	HURLEY H26-743 AWB
Facility	SEC.26-T03N-R65W		

WELLPATH DATA (173 stations)										
MD [ft]	Inclination [°]	Azimuth [°]	TVD [ft]	Vert Sect [ft]	North [ft]	East [ft]	Latitude	Longitude	DLS [°/100ft]	Comments
8502.00	90.180	3.980	6992.43	1215.57	1074.42	-1165.92	40°12'01.370"N	104°37'44.888"W	0.62	
8597.00	90.250	4.410	6992.07	1308.63	1169.17	-1158.97	40°12'02.306"N	104°37'44.787"W	0.46	
8691.00	89.970	3.860	6991.89	1400.73	1262.92	-1152.19	40°12'03.232"N	104°37'44.688"W	0.66	
8786.00	89.970	1.840	6991.94	1494.21	1357.80	-1147.47	40°12'04.169"N	104°37'44.615"W	2.13	
8880.00	90.090	358.240	6991.89	1587.40	1451.78	-1147.40	40°12'05.097"N	104°37'44.602"W	3.83	
8975.00	89.750	356.520	6992.03	1682.07	1546.68	-1151.75	40°12'06.036"N	104°37'44.646"W	1.85	
9069.00	89.910	357.640	6992.30	1775.78	1640.56	-1156.53	40°12'06.964"N	104°37'44.696"W	1.20	
9163.00	89.850	358.530	6992.50	1869.35	1734.50	-1159.68	40°12'07.892"N	104°37'44.724"W	0.95	
9258.00	89.780	359.590	6992.81	1963.75	1829.49	-1161.23	40°12'08.831"N	104°37'44.732"W	1.12	
9352.00	89.850	0.550	6993.11	2056.95	1923.49	-1161.12	40°12'09.760"N	104°37'44.719"W	1.02	
9447.00	89.940	1.090	6993.29	2150.97	2018.48	-1159.76	40°12'10.698"N	104°37'44.689"W	0.58	
9541.00	89.970	1.050	6993.36	2243.95	2112.46	-1158.00	40°12'11.627"N	104°37'44.655"W	0.05	
9636.00	90.060	0.890	6993.33	2337.94	2207.45	-1156.40	40°12'12.565"N	104°37'44.622"W	0.19	
9730.00	90.030	0.470	6993.26	2431.01	2301.44	-1155.28	40°12'13.494"N	104°37'44.596"W	0.45	
9824.00	90.000	0.250	6993.24	2524.15	2395.44	-1154.69	40°12'14.423"N	104°37'44.576"W	0.24	
9919.00	90.000	359.980	6993.24	2618.33	2490.44	-1154.50	40°12'15.362"N	104°37'44.562"W	0.28	
10013.00	89.910	359.650	6993.31	2711.59	2584.44	-1154.80	40°12'16.290"N	104°37'44.554"W	0.36	
10108.00	90.030	359.230	6993.36	2805.91	2679.43	-1155.73	40°12'17.229"N	104°37'44.554"W	0.46	
10202.00	89.910	358.400	6993.41	2899.36	2773.41	-1157.67	40°12'18.158"N	104°37'44.567"W	0.89	
10297.00	90.000	358.670	6993.48	2993.85	2868.38	-1160.10	40°12'19.097"N	104°37'44.586"W	0.30	
10391.00	90.000	359.440	6993.48	3087.25	2962.37	-1161.65	40°12'20.026"N	104°37'44.594"W	0.82	
10485.00	90.030	0.220	6993.46	3180.51	3056.36	-1161.93	40°12'20.955"N	104°37'44.586"W	0.83	
10580.00	89.970	0.990	6993.46	3274.58	3151.36	-1160.93	40°12'21.893"N	104°37'44.561"W	0.81	
10674.00	90.340	2.030	6993.20	3367.45	3245.32	-1158.45	40°12'22.821"N	104°37'44.517"W	1.17	
10769.00	90.220	1.800	6992.74	3461.19	3340.27	-1155.28	40°12'23.759"N	104°37'44.464"W	0.27	
10863.00	90.120	1.360	6992.46	3554.04	3434.23	-1152.69	40°12'24.688"N	104°37'44.419"W	0.48	
10957.00	90.370	358.830	6992.06	3647.23	3528.22	-1152.53	40°12'25.616"N	104°37'44.405"W	2.70	
11052.00	89.970	357.840	6991.78	3741.75	3623.18	-1155.29	40°12'26.555"N	104°37'44.429"W	1.12	
11146.00	90.150	358.170	6991.68	3835.34	3717.13	-1158.56	40°12'27.483"N	104°37'44.459"W	0.40	
11241.00	90.250	358.760	6991.35	3929.84	3812.09	-1161.11	40°12'28.422"N	104°37'44.480"W	0.63	



Actual Wellpath Report

HURLEY H26-743 AWP



REFERENCE WELLPATH IDENTIFICATION			
Operator	NOBLE ENERGY, INC	Slot	SLOT#43 HURLEY H26-743(2234'FNL&1064'FEL,SEC.26)
Area	COLORADO	Well	HURLEY H26-743
Field	WELD COUNTY (NOBLE NAD 83 GRID)	Wellbore	HURLEY H26-743 AWB
Facility	SEC.26-T03N-R65W		

WELLPATH DATA (173 stations)											
MD [ft]	Inclination [°]	Azimuth [°]	TVD [ft]	Vert Sect [ft]	North [ft]	East [ft]	Latitude		Longitude	DLS [°/100ft]	Comments
11336.00	90.340	359.210	6990.86	4024.25	3907.07	-1162.79	40°12'29.361"N		104°37'44.489"W	0.48	
11430.00	90.220	359.400	6990.40	4117.61	4001.07	-1163.93	40°12'30.290"N		104°37'44.492"W	0.24	
11525.00	90.090	359.810	6990.14	4211.90	4096.06	-1164.59	40°12'31.229"N		104°37'44.489"W	0.45	
11619.00	90.150	0.350	6989.95	4305.10	4190.06	-1164.45	40°12'32.157"N		104°37'44.475"W	0.58	
11713.00	90.220	0.440	6989.64	4398.23	4284.06	-1163.81	40°12'33.086"N		104°37'44.455"W	0.12	
11808.00	90.280	1.670	6989.23	4492.19	4379.04	-1162.06	40°12'34.025"N		104°37'44.420"W	1.30	
11902.00	90.150	1.970	6988.87	4584.98	4472.99	-1159.07	40°12'34.953"N		104°37'44.370"W	0.35	
11997.00	90.220	1.450	6988.57	4678.78	4567.95	-1156.24	40°12'35.891"N		104°37'44.321"W	0.55	
12091.00	90.310	1.310	6988.13	4771.68	4661.92	-1153.97	40°12'36.819"N		104°37'44.280"W	0.18	
12186.00	90.400	1.010	6987.54	4865.62	4756.90	-1152.05	40°12'37.757"N		104°37'44.243"W	0.33	
12280.00	90.460	1.050	6986.84	4958.60	4850.88	-1150.36	40°12'38.686"N		104°37'44.210"W	0.08	
12375.00	90.340	0.320	6986.18	5052.66	4945.87	-1149.22	40°12'39.624"N		104°37'44.183"W	0.78	
12469.00	90.460	0.030	6985.52	5145.84	5039.87	-1148.94	40°12'40.553"N		104°37'44.167"W	0.33	
12564.00	90.370	0.360	6984.83	5240.00	5134.87	-1148.61	40°12'41.492"N		104°37'44.151"W	0.36	
12658.00	90.280	359.110	6984.30	5333.27	5228.86	-1149.05	40°12'42.421"N		104°37'44.145"W	1.33	
12753.00	90.310	359.500	6983.81	5427.62	5323.85	-1150.20	40°12'43.360"N		104°37'44.148"W	0.41	
12847.00	90.370	359.940	6983.25	5520.89	5417.85	-1150.66	40°12'44.288"N		104°37'44.142"W	0.47	
12941.00	90.280	0.390	6982.72	5614.08	5511.85	-1150.39	40°12'45.217"N		104°37'44.126"W	0.49	
13036.00	90.460	0.650	6982.10	5708.17	5606.84	-1149.53	40°12'46.156"N		104°37'44.103"W	0.33	
13130.00	90.370	1.250	6981.42	5801.17	5700.83	-1147.97	40°12'47.084"N		104°37'44.071"W	0.65	
13224.00	90.460	1.460	6980.74	5894.07	5794.80	-1145.75	40°12'48.013"N		104°37'44.031"W	0.24	
13319.00	90.310	1.720	6980.10	5987.91	5889.76	-1143.11	40°12'48.951"N		104°37'43.985"W	0.32	
13414.00	90.370	2.190	6979.54	6081.64	5984.70	-1139.87	40°12'49.889"N		104°37'43.931"W	0.50	
13508.00	90.340	2.080	6978.96	6174.34	6078.63	-1136.37	40°12'50.817"N		104°37'43.874"W	0.12	
13603.00	90.250	1.680	6978.47	6268.10	6173.58	-1133.25	40°12'51.754"N		104°37'43.822"W	0.43	
13697.00	90.400	1.750	6977.94	6360.91	6267.54	-1130.44	40°12'52.683"N		104°37'43.774"W	0.18	
13792.00	90.490	1.130	6977.20	6454.78	6362.51	-1128.05	40°12'53.621"N		104°37'43.731"W	0.66	
13886.00	90.370	0.750	6976.49	6547.78	6456.49	-1126.51	40°12'54.549"N		104°37'43.699"W	0.42	
13981.00	90.520	359.990	6975.75	6641.91	6551.48	-1125.90	40°12'55.488"N		104°37'43.679"W	0.82	
14076.00	90.550	358.720	6974.87	6736.24	6646.47	-1126.97	40°12'56.427"N		104°37'43.681"W	1.34	



Actual Wellpath Report

HURLEY H26-743 AWP



REFERENCE WELLPATH IDENTIFICATION			
Operator	NOBLE ENERGY, INC	Slot	SLOT#43 HURLEY H26-743(2234'FNL&1064'FEL,SEC.26)
Area	COLORADO	Well	HURLEY H26-743
Field	WELD COUNTY (NOBLE NAD 83 GRID)	Wellbore	HURLEY H26-743 AWB
Facility	SEC.26-T03N-R65W		

WELLPATH DATA (173 stations)												
MD [ft]	Inclination [°]	Azimuth [°]	TVD [ft]	Vert Sect [ft]	North [ft]	East [ft]	Latitude		Longitude		DLS [°/100ft]	Comments
14170.00	90.280	359.020	6974.19	6829.68	6740.45	-1128.82	40°12'57.356"N		104°37'43.693"W		0.43	
14264.00	90.310	359.330	6973.70	6923.06	6834.44	-1130.17	40°12'58.284"N		104°37'43.698"W		0.33	
14359.00	90.180	359.720	6973.30	7017.37	6929.44	-1130.96	40°12'59.223"N		104°37'43.696"W		0.43	
14453.00	90.460	357.930	6972.77	7110.81	7023.41	-1132.89	40°13'00.152"N		104°37'43.709"W		1.93	
14548.00	90.370	359.300	6972.08	7205.28	7118.38	-1135.18	40°13'01.091"N		104°37'43.727"W		1.45	
14642.00	90.430	0.530	6971.43	7298.51	7212.37	-1135.32	40°13'02.019"N		104°37'43.717"W		1.31	
14737.00	90.340	0.600	6970.79	7392.60	7307.37	-1134.39	40°13'02.958"N		104°37'43.693"W		0.12	
14832.00	90.650	1.770	6969.97	7486.53	7402.34	-1132.42	40°13'03.896"N		104°37'43.655"W		1.27	
14926.00	90.430	2.940	6969.08	7579.16	7496.26	-1128.56	40°13'04.824"N		104°37'43.594"W		1.27	
15020.00	90.490	2.580	6968.33	7671.69	7590.14	-1124.03	40°13'05.751"N		104°37'43.524"W		0.39	
15115.00	91.140	2.940	6966.98	7765.19	7685.02	-1119.46	40°13'06.688"N		104°37'43.453"W		0.78	
15209.00	90.550	6.510	6965.59	7857.07	7778.68	-1111.72	40°13'07.613"N		104°37'43.341"W		3.85	
15304.00	90.090	4.020	6965.06	7949.75	7873.27	-1103.00	40°13'08.547"N		104°37'43.217"W		2.67	
15398.00	89.940	1.360	6965.03	8042.29	7967.16	-1098.59	40°13'09.474"N		104°37'43.148"W		2.83	
15493.00	89.940	359.690	6965.13	8136.38	8062.15	-1097.72	40°13'10.413"N		104°37'43.125"W		1.76	
15587.00	89.880	358.200	6965.28	8229.80	8156.13	-1099.45	40°13'11.342"N		104°37'43.135"W		1.59	
15682.00	90.060	357.880	6965.33	8324.37	8251.07	-1102.70	40°13'12.280"N		104°37'43.165"W		0.39	
15776.00	89.850	357.470	6965.41	8418.00	8345.00	-1106.51	40°13'13.209"N		104°37'43.202"W		0.49	
15871.00	89.780	357.010	6965.71	8512.69	8439.89	-1111.09	40°13'14.147"N		104°37'43.249"W		0.49	
15965.00	90.460	357.080	6965.51	8606.41	8533.76	-1115.93	40°13'15.075"N		104°37'43.300"W		0.73	
16060.00	90.180	356.240	6964.98	8701.17	8628.60	-1121.47	40°13'16.012"N		104°37'43.359"W		0.93	
16203.00	90.400	356.180	6964.26	8843.88	8771.28	-1130.92	40°13'17.423"N		104°37'43.463"W		0.16	Last BHI MWD Survey
16227.00	90.400	356.180	6964.09	8867.84	8795.23	-1132.52	40°13'17.660"N		104°37'43.480"W		0.00	Projection to Bit



Actual Wellpath Report

HURLEY H26-743 AWP

Page 8 of 10



REFERENCE WELLPATH IDENTIFICATION			
Operator	NOBLE ENERGY, INC	Slot	SLOT#43 HURLEY H26-743(2234'FNL&1064'FEL,SEC.26)
Area	COLORADO	Well	HURLEY H26-743
Field	WELD COUNTY (NOBLE NAD 83 GRID)	Wellbore	HURLEY H26-743 AWB
Facility	SEC.26-T03N-R65W		

HOLE & CASING SECTIONS - Ref Wellbore: HURLEY H26-743 AWB Ref Wellpath: HURLEY H26-743 AWP									
String/Diameter	Start MD [ft]	End MD [ft]	Interval [ft]	Start TVD [ft]	End TVD [ft]	Start N/S [ft]	Start E/W [ft]	End N/S [ft]	End E/W [ft]
13.5in Open Hole	30.00	1947.00	1917.00	30.00	1946.93	0.02	0.01	0.81	-4.84
9.625in Casing Surface	30.00	1947.00	1917.00	30.00	1946.93	0.02	0.01	0.81	-4.84
8.5in Open Hole	1947.00	16203.00	14256.00	1946.93	6964.26	0.81	-4.84	8771.28	-1130.92

TARGETS								
Name	TVD [ft]	North [ft]	East [ft]	Grid East [US ft]	Grid North [US ft]	Latitude	Longitude	Shape
SECTION 14-T03N-R65W	33.00	-137.81	-2906.88	3241514.12	1315823.44	40°11'49.560"N	104°38'07.476"W	polygon
SECTION 23-T03N-R65W	33.00	-137.81	-2906.88	3241514.12	1315823.44	40°11'49.560"N	104°38'07.476"W	polygon
SECTION 26-T03N-R65W	33.00	-137.81	-2906.88	3241514.12	1315823.44	40°11'49.560"N	104°38'07.476"W	polygon
HURLEY H26-743 REV-1 BHL(1300'FSL&2175'FEL,SEC.14)	6944.30	8801.59	-1142.49	3243278.43	1324762.45	40°13'17.724"N	104°37'43.608"W	point
HURLEY H26-743 REV-2 BHL(1300'FSL&2175'FEL,SEC.14)	6962.71	8801.59	-1142.49	3243278.43	1324762.45	40°13'17.724"N	104°37'43.608"W	point
HURLEY H26-743 LANDING POINT	6995.00	85.00	-1150.00	3243270.92	1316046.24	40°11'51.592"N	104°37'44.808"W	point
HURLEY H26-743/Change INC	6995.00	3506.57	-1147.05	3243273.87	1319467.66	40°12'25.402"N	104°37'44.337"W	point



Actual Wellpath Report

HURLEY H26-743 AWP

Page 9 of 10



REFERENCE WELLPATH IDENTIFICATION			
Operator	NOBLE ENERGY, INC	Slot	SLOT#43 HURLEY H26-743(2234'FNL&1064'FEL,SEC.26)
Area	COLORADO	Well	HURLEY H26-743
Field	WELD COUNTY (NOBLE NAD 83 GRID)	Wellbore	HURLEY H26-743 AWB
Facility	SEC.26-T03N-R65W		

WELLPATH COMPOSITION - Ref Wellbore: HURLEY H26-743 AWB Ref Wellpath: HURLEY H26-743 AWP				
Start MD [ft]	End MD [ft]	Positional Uncertainty Model	Log Name/Comment	Wellbore
0.00	1945.20	Gyrodata standard - Drop gyro or Multi-shot	3rd Party Surface Gyros <88.56-1945.2'>	HURLEY H26-743 AWB
1945.20	16203.00	OWSG MWD rev2 + IFR1 + Multi-Station Correction	BHGE 8.5" ATCurve OWSG+IFR+MSA <1981'-16203'>	HURLEY H26-743 AWB
16203.00	16227.00	Blind Drilling (std)	Projection to bit	HURLEY H26-743 AWB



Actual Wellpath Report

HURLEY H26-743 AWP

Page 10 of 10



REFERENCE WELLPATH IDENTIFICATION			
Operator	NOBLE ENERGY, INC	Slot	SLOT#43 HURLEY H26-743(2234'FNL&1064'FEL,SEC.26)
Area	COLORADO	Well	HURLEY H26-743
Field	WELD COUNTY (NOBLE NAD 83 GRID)	Wellbore	HURLEY H26-743 AWB
Facility	SEC.26-T03N-R65W		

WELLPATH COMMENTS				
MD [ft]	Inclination [°]	Azimuth [°]	TVD [ft]	Comment
1945.20	1.170	340.900	1945.13	Tie to Surface Gyro
16203.00	90.400	356.180	6964.26	Last BHI MWD Survey
16227.00	90.400	356.180	6964.09	Projection to Bit

COMMENTS
<div>Wellpath general comments</div> <div>SURFACE LOCATION: SENE</div> <div>40.19740N</div> <div>104.62500W</div> <div>API: 05-123-46761</div>