

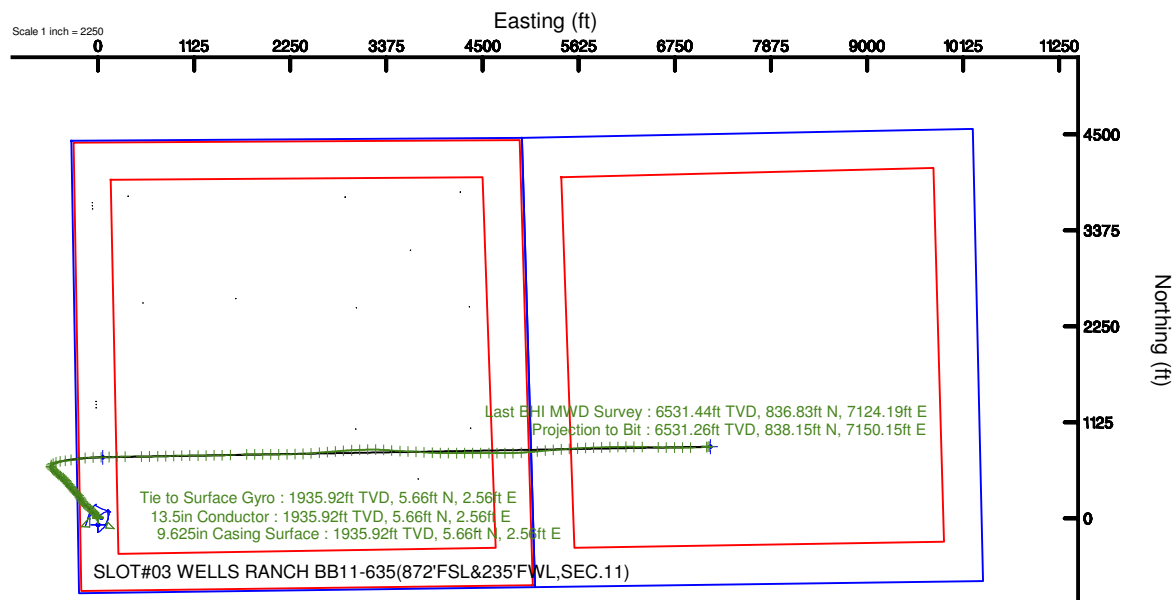
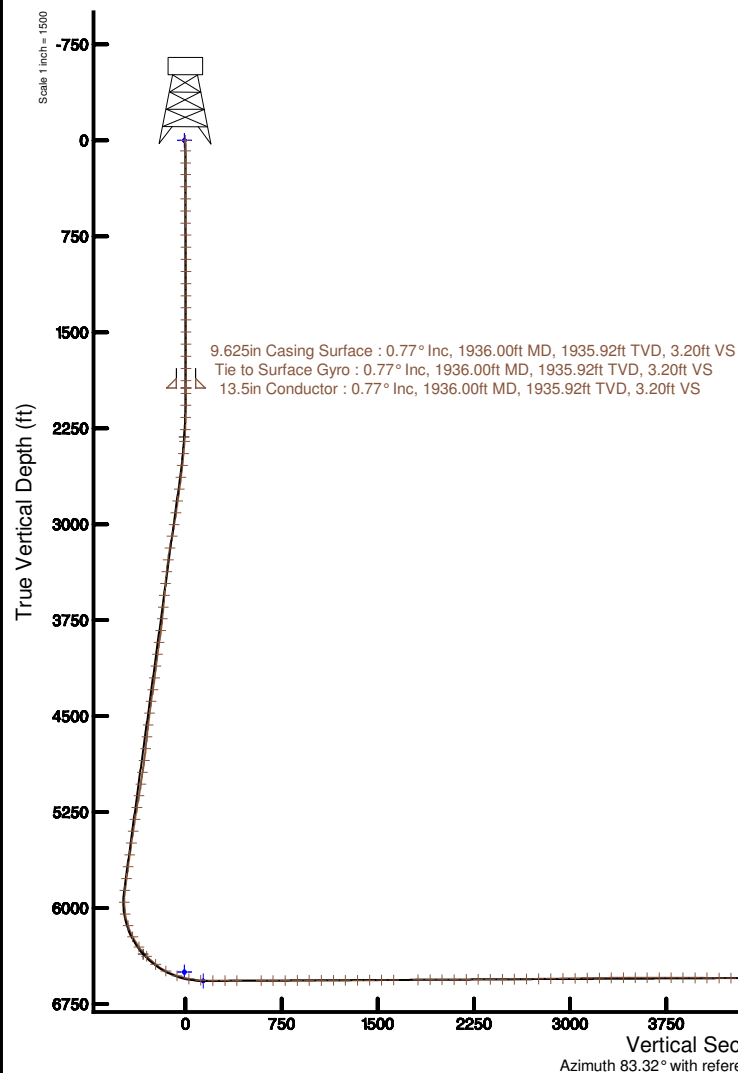
# NOBLE ENERGY, INC

Location: COLORADO Slot: SLOT#03 WELLS RANCH BB11-635(872°FSL&235°FWL,SEC.11)  
Field: WELD COUNTY (NOBLE NAD 83 GRID) Well: WELLS RANCH BB11-635  
Facility: SEC.11-T05N-R63W Wellbore: WELLS RANCH BB11-635 PWB



Pick reference wellbore to WELLS RANCH BB11-635 (REV A.G. PWB)	Grid System: NAD83 - Lambert Colorado SP, Northern Zone (D01), US feet	Comments
True vertical depths are referenced to HBP Pkg (2010) (PWB)	North Reference: Grid north	SURFACE LOCATION: SWSW
Measured depths are referenced to HBP Pkg (2010) (PWB)	Scale: True distance	40.40902N
HBP Pkg (2010) (PWB) to Mean Sea Level: 4706 feet	Depth are in feet	104.41261W
Mean Sea Level to Ground level (A Site: SLOTHO3 WELLS RANCH BB11-635(872°FSL&235°FWL,SEC.11): 0 feet)	Created by: cadrigal on 2017-10-19	API #: 05-123-44951
Coordinates are in feet referenced to Slot	Database: Denver	

Location Information					
Facility Name	Grid East (US ft)	Grid North (US ft)	Latitude	Longitude	
SEC.11-T05N-R63W	338880.450	130806.405	40°34'51.716"N	104°54'43.380"W	
Site	Location (ft)	Location (ft)	Grid East (US ft)	Grid North (US ft)	Latitude
SLOTHO3 WELLS RANCH BB11-635(872°FSL&235°FWL,SEC.11)	76.50	0.04	338880.450	130806.405	40°34'51.716"N
HBP Pkg (2010) (PWB) to Ground level (A Site: SLOTHO3 WELLS RANCH BB11-635(872°FSL&235°FWL,SEC.11)					4706
Mean Sea Level to Ground level (A Site: SLOTHO3 WELLS RANCH BB11-635(872°FSL&235°FWL,SEC.11)					0
HBP Pkg (2010) (PWB) to Mean Sea Level					4706



Last BHI MWD Survey : 90.40° Inc, 14085.00ft MD, 6531.44ft TVD, 7173.17ft VS  
Projection to Bit : 90.40° Inc, 14111.00ft MD, 6531.26ft TVD, 7199.11ft VS

Scale 1 inch = 1500

### REFERENCE WELLPATH IDENTIFICATION

Operator	NOBLE ENERGY, INC	Slot	SLOT#03 WELLS RANCH BB11-635(872'FSL&235'FWL,SEC.11)
Area	COLORADO	Well	WELLS RANCH BB11-635
Field	WELD COUNTY (NOBLE NAD 83 GRID)	Wellbore	WELLS RANCH BB11-635 AWB
Facility	SEC.11-T05N-R63W		

### REPORT SETUP INFORMATION

Projection System	NAD83 / Lambert Colorado SP, Northern Zone (501), US feet	Software System	WellArchitect® 5.0
North Reference	Grid	User	Cantryat
Scale	0.999961	Report Generated	10/19/2017 at 4:47:10 PM
Convergence at slot	0.71° East	Database/Source file	Denver/WELLS_RANCH_BB11-635_AWP.xml

### WELLPATH LOCATION

	Local coordinates		Grid coordinates		Geographic coordinates	
	North[ft]	East[ft]	Easting[US ft]	Northing[US ft]	Latitude	Longitude
Slot Location	76.50	-0.94	3302801.49	1393702.95	40°24'32.472"N	104°24'45.396"W
Facility Reference Pt			3302802.43	1393626.46	40°24'31.716"N	104°24'45.396"W
Field Reference Pt			3000000.00	4454105.15	48°46'34.315"N	105°30'00.000"W

### WELLPATH DATUM

Calculation method	Minimum curvature	H&P Rig (30'KB) (RKB) to Facility Vertical Datum	4706.00ft
Horizontal Reference Pt	Slot	H&P Rig (30'KB) (RKB) to Mean Sea Level	4706.00ft
Vertical Reference Pt	H&P Rig (30'KB) (RKB)	H&P Rig (30'KB) (RKB) to Ground Level at Slot (SLOT#03 WELLS RANCH BB11-635 (872'FSL&235'FWL,SEC.11))	4706.00ft
MD Reference Pt	H&P Rig (30'KB) (RKB)	Section Origin	N 0.00, E 0.00 ft
Field Vertical Reference	Mean Sea Level	Section Azimuth	83.31°

REFERENCE WELLPATH IDENTIFICATION			
Operator	NOBLE ENERGY, INC	Slot	SLOT#03 WELLS RANCH BB11-635(872'FSL&235'FWL,SEC.11)
Area	COLORADO	Well	WELLS RANCH BB11-635
Field	WELD COUNTY (NOBLE NAD 83 GRID)	Wellbore	WELLS RANCH BB11-635 AWB
Facility	SEC.11-T05N-R63W		

WELLPATH DATA (148 stations)									
MD [ft]	Inclination [°]	Azimuth [°]	TVD [ft]	Vert Sect [ft]	North [ft]	East [ft]	Latitude	Longitude	DLS [°/100ft]
0.00	0.000	28.550	0.00	0.00	0.00	0.00	40°24'32.472"N	104°24'45.396"W	0.00
82.76	0.610	28.550	82.76	0.25	0.39	0.21	40°24'32.476"N	104°24'45.393"W	0.74
177.19	0.870	4.940	177.18	0.69	1.54	0.51	40°24'32.487"N	104°24'45.389"W	0.42
268.30	0.710	358.850	268.28	0.88	2.80	0.56	40°24'32.500"N	104°24'45.388"W	0.20
362.97	0.450	33.350	362.95	1.18	3.69	0.75	40°24'32.508"N	104°24'45.386"W	0.45
457.74	0.290	44.320	457.72	1.60	4.18	1.13	40°24'32.513"N	104°24'45.381"W	0.18
552.35	0.680	344.100	552.32	1.70	4.89	1.14	40°24'32.520"N	104°24'45.381"W	0.63
647.22	0.770	43.140	647.19	2.10	5.89	1.42	40°24'32.530"N	104°24'45.377"W	0.76
741.45	0.450	79.660	741.41	2.95	6.42	2.22	40°24'32.535"N	104°24'45.366"W	0.52
836.10	0.420	6.540	836.06	3.40	6.83	2.62	40°24'32.539"N	104°24'45.361"W	0.55
930.71	0.650	358.930	930.66	3.53	7.71	2.65	40°24'32.548"N	104°24'45.360"W	0.25
1025.44	0.400	342.960	1025.39	3.53	8.57	2.55	40°24'32.556"N	104°24'45.362"W	0.30
1120.11	0.180	73.060	1120.06	3.61	8.93	2.59	40°24'32.560"N	104°24'45.361"W	0.46
1214.57	0.070	280.850	1214.52	3.70	8.98	2.68	40°24'32.560"N	104°24'45.360"W	0.26
1309.32	0.220	42.650	1309.27	3.79	9.13	2.74	40°24'32.562"N	104°24'45.359"W	0.28
1404.12	0.320	80.490	1404.07	4.19	9.30	3.13	40°24'32.564"N	104°24'45.354"W	0.21
1498.94	0.300	25.090	1498.89	4.58	9.57	3.49	40°24'32.566"N	104°24'45.349"W	0.30
1593.60	0.230	229.050	1593.55	4.56	9.67	3.45	40°24'32.567"N	104°24'45.350"W	0.55
1688.08	0.500	212.560	1688.02	4.14	9.20	3.09	40°24'32.563"N	104°24'45.355"W	0.30
1782.58	1.070	191.430	1782.52	3.60	7.99	2.69	40°24'32.551"N	104°24'45.360"W	0.67
1877.53	0.820	185.430	1877.45	3.19	6.44	2.45	40°24'32.535"N	104°24'45.363"W	0.28
1936.00	0.770	158.480	1935.92	3.20	5.66	2.56	40°24'32.528"N	104°24'45.362"W	0.64
1978.00	0.730	150.440	1977.91	3.38	5.17	2.79	40°24'32.523"N	104°24'45.359"W	0.27
2072.00	1.770	332.920	2071.90	3.10	5.94	2.43	40°24'32.530"N	104°24'45.364"W	2.66
2167.00	3.970	333.740	2166.78	1.49	10.19	0.30	40°24'32.573"N	104°24'45.390"W	2.32
2261.00	6.210	328.240	2260.40	-1.76	17.44	-3.81	40°24'32.645"N	104°24'45.443"W	2.44
2356.00	7.890	322.530	2354.68	-7.27	26.98	-10.48	40°24'32.740"N	104°24'45.527"W	1.91
2450.00	8.850	317.580	2447.68	-14.80	37.44	-19.29	40°24'32.844"N	104°24'45.639"W	1.28
2545.00	10.880	313.860	2541.27	-24.76	49.05	-30.68	40°24'32.960"N	104°24'45.785"W	2.24
2639.00	12.290	317.360	2633.35	-36.28	62.55	-43.86	40°24'33.095"N	104°24'45.953"W	1.68

REFERENCE WELLPATH IDENTIFICATION			
Operator	NOBLE ENERGY, INC	Slot	SLOT#03 WELLS RANCH BB11-635(872'FSL&235'FWL,SEC.11)
Area	COLORADO	Well	WELLS RANCH BB11-635
Field	WELD COUNTY (NOBLE NAD 83 GRID)	Wellbore	WELLS RANCH BB11-635 AWB
Facility	SEC.11-T05N-R63W		

WELLPATH DATA (148 stations)									
MD [ft]	Inclination [°]	Azimuth [°]	TVD [ft]	Vert Sect [ft]	North [ft]	East [ft]	Latitude	Longitude	DLS [°/100ft]
2734.00	12.710	317.920	2726.10	-48.26	77.75	-57.71	40°24'33.247"N	104°24'46.130"W	0.46
2829.00	12.900	315.010	2818.74	-60.89	93.01	-72.21	40°24'33.400"N	104°24'46.315"W	0.71
2923.00	13.070	312.060	2910.34	-74.40	107.55	-87.52	40°24'33.545"N	104°24'46.510"W	0.73
3018.00	12.820	308.590	3002.93	-88.90	121.32	-103.73	40°24'33.683"N	104°24'46.718"W	0.86
3112.00	12.980	302.440	3094.56	-104.43	133.49	-120.80	40°24'33.806"N	104°24'46.936"W	1.47
3207.00	12.820	306.230	3187.16	-120.43	145.44	-138.30	40°24'33.926"N	104°24'47.161"W	0.91
3302.00	13.000	316.440	3279.77	-134.56	159.41	-154.17	40°24'34.066"N	104°24'47.364"W	2.41
3396.00	12.780	323.190	3371.41	-146.12	175.40	-167.68	40°24'34.225"N	104°24'47.536"W	1.62
3491.00	13.030	328.390	3464.01	-155.91	192.93	-179.59	40°24'34.400"N	104°24'47.687"W	1.25
3585.00	12.920	331.390	3555.61	-164.30	211.18	-190.18	40°24'34.582"N	104°24'47.821"W	0.73
3680.00	13.040	330.090	3648.19	-172.49	229.80	-200.61	40°24'34.767"N	104°24'47.953"W	0.33
3774.00	13.070	326.430	3739.76	-181.48	247.84	-211.78	40°24'34.947"N	104°24'48.094"W	0.88
3869.00	13.040	318.700	3832.31	-192.43	264.85	-224.79	40°24'35.116"N	104°24'48.260"W	1.84
3963.00	13.040	316.470	3923.89	-204.81	280.50	-239.09	40°24'35.273"N	104°24'48.442"W	0.54
4058.00	13.080	317.770	4016.43	-217.48	296.23	-253.70	40°24'35.430"N	104°24'48.628"W	0.31
4153.00	12.830	318.830	4109.01	-229.71	312.13	-267.87	40°24'35.589"N	104°24'48.809"W	0.36
4247.00	12.880	317.840	4200.66	-241.70	327.76	-281.77	40°24'35.745"N	104°24'48.986"W	0.24
4342.00	13.230	317.480	4293.20	-254.20	343.62	-296.22	40°24'35.903"N	104°24'49.171"W	0.38
4436.00	13.010	313.540	4384.75	-267.27	358.83	-311.16	40°24'36.055"N	104°24'49.361"W	0.98
4531.00	13.010	320.440	4477.31	-279.92	374.44	-325.73	40°24'36.211"N	104°24'49.547"W	1.63
4626.00	12.820	323.510	4569.91	-290.96	391.16	-338.81	40°24'36.378"N	104°24'49.714"W	0.75
4720.00	12.820	323.670	4661.57	-301.30	407.95	-351.19	40°24'36.545"N	104°24'49.871"W	0.04
4815.00	12.690	326.030	4754.23	-311.30	425.09	-363.26	40°24'36.716"N	104°24'50.024"W	0.57
4909.00	13.110	319.660	4845.86	-321.94	441.78	-375.93	40°24'36.883"N	104°24'50.185"W	1.58
5004.00	13.420	315.820	4938.32	-334.62	457.90	-390.59	40°24'37.044"N	104°24'50.372"W	0.98
5099.00	12.360	308.170	5030.94	-348.54	472.09	-406.27	40°24'37.186"N	104°24'50.573"W	2.11
5193.00	12.140	302.270	5122.80	-363.36	483.59	-422.53	40°24'37.301"N	104°24'50.781"W	1.35
5288.00	12.850	304.780	5215.55	-379.04	494.95	-439.66	40°24'37.416"N	104°24'51.001"W	0.94
5383.00	12.780	308.860	5308.19	-394.32	507.57	-456.52	40°24'37.542"N	104°24'51.217"W	0.96
5477.00	12.890	312.880	5399.84	-408.40	521.22	-472.30	40°24'37.679"N	104°24'51.418"W	0.96

REFERENCE WELLPATH IDENTIFICATION			
Operator	NOBLE ENERGY, INC	Slot	SLOT#03 WELLS RANCH BB11-635(872'FSL&235'FWL,SEC.11)
Area	COLORADO	Well	WELLS RANCH BB11-635
Field	WELD COUNTY (NOBLE NAD 83 GRID)	Wellbore	WELLS RANCH BB11-635 AWB
Facility	SEC.11-T05N-R63W		

WELLPATH DATA (148 stations)									
MD [ft]	Inclination [°]	Azimuth [°]	TVD [ft]	Vert Sect [ft]	North [ft]	East [ft]	Latitude	Longitude	DLS [°/100ft]
5572.00	12.630	314.800	5492.49	-421.74	535.75	-487.43	40°24'37.825"N	104°24'51.612"W	0.52
5667.00	12.450	313.760	5585.23	-434.73	550.15	-502.20	40°24'37.969"N	104°24'51.800"W	0.30
5761.00	12.380	314.630	5677.03	-447.48	564.24	-516.68	40°24'38.110"N	104°24'51.985"W	0.21
5856.00	12.600	314.960	5769.78	-460.27	578.72	-531.26	40°24'38.255"N	104°24'52.172"W	0.24
5950.00	11.510	316.300	5861.71	-472.28	592.74	-545.00	40°24'38.395"N	104°24'52.347"W	1.20
6045.00	9.840	356.430	5955.18	-477.55	607.72	-552.06	40°24'38.544"N	104°24'52.436"W	7.85
6139.00	12.480	37.630	6047.54	-470.01	623.81	-546.35	40°24'38.702"N	104°24'52.360"W	8.72
6233.00	20.060	58.290	6137.78	-448.26	640.36	-526.39	40°24'38.863"N	104°24'52.099"W	10.03
6328.00	27.420	73.840	6224.77	-411.83	655.05	-491.44	40°24'39.004"N	104°24'51.645"W	10.11
6422.00	36.060	79.400	6304.65	-362.78	666.18	-443.35	40°24'39.108"N	104°24'51.021"W	9.70
6517.00	43.220	83.640	6377.77	-302.27	674.94	-383.45	40°24'39.187"N	104°24'50.246"W	8.05
6612.00	52.540	82.160	6441.42	-231.89	683.71	-313.62	40°24'39.266"N	104°24'49.342"W	9.88
6707.00	62.210	80.650	6492.58	-152.02	695.71	-234.61	40°24'39.375"N	104°24'48.318"W	10.27
6801.00	71.640	85.050	6529.39	-65.67	706.34	-148.92	40°24'39.469"N	104°24'47.209"W	10.91
6896.00	78.470	87.220	6553.88	25.95	712.50	-57.40	40°24'39.519"N	104°24'46.025"W	7.52
6991.00	87.540	89.450	6565.44	119.77	715.21	36.75	40°24'39.534"N	104°24'44.808"W	9.83
7085.00	90.030	87.960	6567.43	213.32	717.34	130.70	40°24'39.544"N	104°24'43.593"W	3.09
7180.00	90.060	88.400	6567.36	307.98	720.36	225.65	40°24'39.562"N	104°24'42.365"W	0.46
7274.00	89.910	89.180	6567.38	401.55	722.34	319.63	40°24'39.571"N	104°24'41.150"W	0.84
7464.00	90.150	89.640	6567.28	590.48	724.30	509.62	40°24'39.567"N	104°24'38.694"W	0.27
7558.00	90.030	90.020	6567.14	683.87	724.58	603.62	40°24'39.558"N	104°24'37.478"W	0.42
7653.00	90.180	88.470	6566.96	778.36	725.83	698.60	40°24'39.559"N	104°24'36.250"W	1.64
7747.00	90.090	88.550	6566.74	871.97	728.27	792.57	40°24'39.572"N	104°24'35.035"W	0.13
7841.00	90.060	87.100	6566.62	965.68	731.84	886.50	40°24'39.596"N	104°24'33.821"W	1.54
7936.00	90.400	88.850	6566.24	1060.36	735.20	981.44	40°24'39.617"N	104°24'32.593"W	1.88
8030.00	90.150	90.320	6565.79	1153.79	735.88	1075.43	40°24'39.613"N	104°24'31.378"W	1.59
8125.00	90.220	90.660	6565.48	1248.05	735.06	1170.43	40°24'39.593"N	104°24'30.150"W	0.37
8220.00	90.460	89.180	6564.92	1342.41	735.20	1265.42	40°24'39.583"N	104°24'28.922"W	1.58
8314.00	90.250	88.800	6564.33	1435.95	736.85	1359.41	40°24'39.588"N	104°24'27.707"W	0.46
8409.00	90.400	88.280	6563.79	1530.55	739.27	1454.37	40°24'39.600"N	104°24'26.479"W	0.57

REFERENCE WELLPATH IDENTIFICATION			
Operator	NOBLE ENERGY, INC	Slot	SLOT#03 WELLS RANCH BB11-635(872'FSL&235'FWL,SEC.11)
Area	COLORADO	Well	WELLS RANCH BB11-635
Field	WELD COUNTY (NOBLE NAD 83 GRID)	Wellbore	WELLS RANCH BB11-635 AWB
Facility	SEC.11-T05N-R63W		

WELLPATH DATA (148 stations)									
MD [ft]	Inclination [°]	Azimuth [°]	TVD [ft]	Vert Sect [ft]	North [ft]	East [ft]	Latitude	Longitude	DLS [°/100ft]
8504.00	90.490	88.780	6563.06	1625.16	741.71	1549.34	40°24'39.613"N	104°24'25.251"W	0.53
8694.00	90.550	87.270	6561.33	1814.50	748.26	1739.21	40°24'39.654"N	104°24'22.795"W	0.80
8788.00	90.220	89.880	6560.70	1908.10	750.60	1833.17	40°24'39.666"N	104°24'21.580"W	2.80
8883.00	90.310	90.530	6560.26	2002.41	750.26	1928.17	40°24'39.651"N	104°24'20.353"W	0.69
8977.00	90.280	90.680	6559.78	2095.65	749.26	2022.17	40°24'39.630"N	104°24'19.138"W	0.16
9072.00	90.370	91.000	6559.24	2189.83	747.87	2117.15	40°24'39.604"N	104°24'17.910"W	0.35
9166.00	90.550	87.350	6558.48	2283.32	749.22	2211.13	40°24'39.606"N	104°24'16.695"W	3.89
9261.00	90.250	89.240	6557.82	2377.95	752.05	2306.08	40°24'39.622"N	104°24'15.467"W	2.01
9356.00	90.340	87.260	6557.33	2472.59	754.95	2401.03	40°24'39.639"N	104°24'14.239"W	2.09
9450.00	90.740	85.400	6556.44	2566.45	760.97	2494.82	40°24'39.687"N	104°24'13.026"W	2.02
9545.00	90.890	84.990	6555.09	2661.39	768.92	2589.48	40°24'39.755"N	104°24'11.801"W	0.46
9639.00	90.770	85.430	6553.73	2755.33	776.77	2683.14	40°24'39.821"N	104°24'10.589"W	0.49
9734.00	90.710	85.470	6552.50	2850.26	784.31	2777.84	40°24'39.884"N	104°24'09.364"W	0.08
9829.00	90.890	85.920	6551.18	2945.17	791.44	2872.56	40°24'39.942"N	104°24'08.138"W	0.51
9924.00	90.920	87.640	6549.68	3039.98	796.77	2967.39	40°24'39.983"N	104°24'06.912"W	1.81
10018.00	90.920	87.250	6548.17	3133.72	800.96	3061.29	40°24'40.013"N	104°24'05.697"W	0.41
10113.00	90.370	88.200	6547.10	3228.43	804.74	3156.20	40°24'40.039"N	104°24'04.470"W	1.16
10207.00	90.550	91.380	6546.34	3321.82	805.08	3250.19	40°24'40.031"N	104°24'03.255"W	3.39
10302.00	90.280	93.440	6545.66	3415.61	801.09	3345.10	40°24'39.980"N	104°24'02.029"W	2.19
10396.00	90.490	94.880	6545.02	3507.93	794.27	3438.84	40°24'39.901"N	104°24'00.818"W	1.55
10491.00	89.880	92.930	6544.72	3601.31	787.80	3533.62	40°24'39.825"N	104°23'59.594"W	2.15
10586.00	89.820	91.400	6544.97	3695.17	784.21	3628.55	40°24'39.778"N	104°23'58.367"W	1.61
10680.00	89.910	94.430	6545.19	3787.85	779.43	3722.41	40°24'39.720"N	104°23'57.155"W	3.22
10775.00	89.480	93.380	6545.69	3881.22	772.96	3817.19	40°24'39.644"N	104°23'55.931"W	1.19
10870.00	89.910	92.540	6546.20	3974.88	768.05	3912.06	40°24'39.584"N	104°23'54.705"W	0.99
10964.00	89.720	91.420	6546.50	4067.80	764.81	4006.00	40°24'39.540"N	104°23'53.491"W	1.21
11059.00	89.540	90.580	6547.12	4161.95	763.15	4100.99	40°24'39.512"N	104°23'52.264"W	0.90
11154.00	89.780	90.050	6547.68	4256.24	762.63	4195.98	40°24'39.495"N	104°23'51.036"W	0.61
11248.00	89.600	88.860	6548.19	4349.69	763.52	4289.98	40°24'39.493"N	104°23'49.821"W	1.28
11343.00	90.150	89.300	6548.40	4444.21	765.05	4384.96	40°24'39.496"N	104°23'48.593"W	0.74

REFERENCE WELLPATH IDENTIFICATION			
Operator	NOBLE ENERGY, INC	Slot	SLOT#03 WELLS RANCH BB11-635(872'FSL&235'FWL,SEC.11)
Area	COLORADO	Well	WELLS RANCH BB11-635
Field	WELD COUNTY (NOBLE NAD 83 GRID)	Wellbore	WELLS RANCH BB11-635 AWB
Facility	SEC.11-T05N-R63W		

WELLPATH DATA (148 stations)									
MD [ft]	Inclination [°]	Azimuth [°]	TVD [ft]	Vert Sect [ft]	North [ft]	East [ft]	Latitude	Longitude	DLS [°/100ft]
11437.00	90.030	89.920	6548.25	4537.65	765.69	4478.96	40°24'39.491"N	104°23'47.377"W	0.67
11532.00	90.000	90.180	6548.22	4631.99	765.60	4573.96	40°24'39.478"N	104°23'46.149"W	0.28
11626.00	90.400	90.380	6547.90	4725.30	765.14	4667.96	40°24'39.462"N	104°23'44.934"W	0.48
11721.00	90.280	90.470	6547.33	4819.56	764.44	4762.95	40°24'39.444"N	104°23'43.707"W	0.16
11815.00	90.220	88.760	6546.92	4912.99	765.07	4856.95	40°24'39.438"N	104°23'42.491"W	1.82
11910.00	90.220	86.450	6546.56	5007.72	769.04	4951.86	40°24'39.466"N	104°23'41.264"W	2.43
12004.00	90.310	85.450	6546.12	5101.62	775.68	5045.62	40°24'39.520"N	104°23'40.051"W	1.07
12099.00	90.430	83.950	6545.51	5196.58	784.45	5140.21	40°24'39.595"N	104°23'38.827"W	1.58
12194.00	90.090	85.160	6545.08	5291.56	793.47	5234.78	40°24'39.672"N	104°23'37.603"W	1.32
12288.00	90.250	85.630	6544.80	5385.50	801.01	5328.47	40°24'39.735"N	104°23'36.390"W	0.53
12383.00	90.250	86.020	6544.38	5480.40	807.93	5423.22	40°24'39.792"N	104°23'35.165"W	0.41
12477.00	90.460	87.160	6543.80	5574.25	813.52	5517.05	40°24'39.836"N	104°23'33.951"W	1.23
12572.00	90.680	86.430	6542.86	5669.07	818.83	5611.90	40°24'39.876"N	104°23'32.724"W	0.80
12666.00	90.550	87.550	6541.85	5762.87	823.77	5705.76	40°24'39.914"N	104°23'31.510"W	1.20
12761.00	90.400	88.570	6541.06	5857.53	826.98	5800.70	40°24'39.934"N	104°23'30.282"W	1.09
12855.00	90.430	87.350	6540.38	5951.22	830.33	5894.64	40°24'39.955"N	104°23'29.067"W	1.30
12950.00	90.370	88.270	6539.72	6045.93	833.96	5989.56	40°24'39.979"N	104°23'27.840"W	0.97
13044.00	90.180	89.000	6539.26	6139.52	836.20	6083.54	40°24'39.990"N	104°23'26.624"W	0.80
13139.00	90.770	89.300	6538.48	6234.02	837.61	6178.52	40°24'39.992"N	104°23'25.396"W	0.70
13234.00	90.340	90.770	6537.56	6328.36	837.55	6273.51	40°24'39.980"N	104°23'24.169"W	1.61
13328.00	90.280	91.320	6537.05	6421.51	835.84	6367.50	40°24'39.951"N	104°23'22.954"W	0.59
13517.00	90.370	91.530	6535.98	6608.61	831.14	6556.44	40°24'39.881"N	104°23'20.512"W	0.12
13612.00	90.460	91.500	6535.29	6702.64	828.62	6651.40	40°24'39.845"N	104°23'19.285"W	0.10
13707.00	90.490	90.220	6534.50	6796.81	827.20	6746.38	40°24'39.819"N	104°23'18.058"W	1.35
13801.00	90.520	89.750	6533.67	6890.17	827.22	6840.38	40°24'39.807"N	104°23'16.843"W	0.50
13896.00	90.460	88.150	6532.86	6984.71	828.96	6935.36	40°24'39.813"N	104°23'15.615"W	1.69
14085.00	90.400	87.080	6531.44	7173.17	836.83	7124.19	40°24'39.867"N	104°23'13.172"W	0.57
14111.00	90.400	87.080	6531.26	7199.11	838.15	7150.15	40°24'39.877"N	104°23'12.837"W	0.00

REFERENCE WELLPATH IDENTIFICATION			
Operator	NOBLE ENERGY, INC	Slot	SLOT#03 WELLS RANCH BB11-635(872'FSL&235'FWL,SEC.11)
Area	COLORADO	Well	WELLS RANCH BB11-635
Field	WELD COUNTY (NOBLE NAD 83 GRID)	Wellbore	WELLS RANCH BB11-635 AWB
Facility	SEC.11-T05N-R63W		

HOLE & CASING SECTIONS - Ref Wellbore: WELLS RANCH BB11-635 AWB Ref Wellpath: WELLS RANCH BB11-635 AWP									
String/Diameter	Start MD [ft]	End MD [ft]	Interval [ft]	Start TVD [ft]	End TVD [ft]	Start N/S [ft]	Start E/W [ft]	End N/S [ft]	End E/W [ft]
13.5in Conductor	30.00	1936.00	1906.00	30.00	1935.92	0.05	0.03	5.66	2.56
9.625in Casing Surface	30.00	1936.00	1906.00	30.00	1935.92	0.05	0.03	5.66	2.56
8.5in Open Hole	1936.00	14111.00	12175.00	1935.92	6531.26	5.66	2.56	838.15	7150.15

WELLPATH COMPOSITION - Ref Wellbore: WELLS RANCH BB11-635 AWB Ref Wellpath: WELLS RANCH BB11-635 AWP				
Start MD [ft]	End MD [ft]	Positional Uncertainty Model	Log Name/Comment	Wellbore
0.00	1877.53	Gyrodatta standard - Drop gyro or Multi-shot	Surface Gyros <82.76'-1877.53'>	WELLS RANCH BB11-635 AWB
1877.53	14085.00	OWSG MWD rev2 + IFR1 + Multi-Station Correction	BH/ATC 8.5" Hole OWSG MWD rev2+IFR+MSA <1936'-14085'>	WELLS RANCH BB11-635 AWB
14085.00	14111.00	Blind Drilling (std)	Projection to bit	WELLS RANCH BB11-635 AWB



REFERENCE WELLPATH IDENTIFICATION			
Operator	NOBLE ENERGY, INC	Slot	SLOT#03 WELLS RANCH BB11-635(872'FSL&235'FWL,SEC.11)
Area	COLORADO	Well	WELLS RANCH BB11-635
Field	WELD COUNTY (NOBLE NAD 83 GRID)	Wellbore	WELLS RANCH BB11-635 AWP
Facility	SEC.11-T05N-R63W		

WELLPATH COMMENTS				
MD [ft]	Inclination [°]	Azimuth [°]	TVD [ft]	Comment
1936.00	0.770	158.480	1935.92	Tie to Surface Gyro
14085.00	90.400	87.080	6531.44	Last BHI MWD Survey
14111.00	90.400	87.080	6531.26	Projection to Bit

COMMENTS	
<b>Wellpath general comments</b> SURFACE LOCATION: SWSW 40.40902N 104.41261W API #: 05-123-44951	