

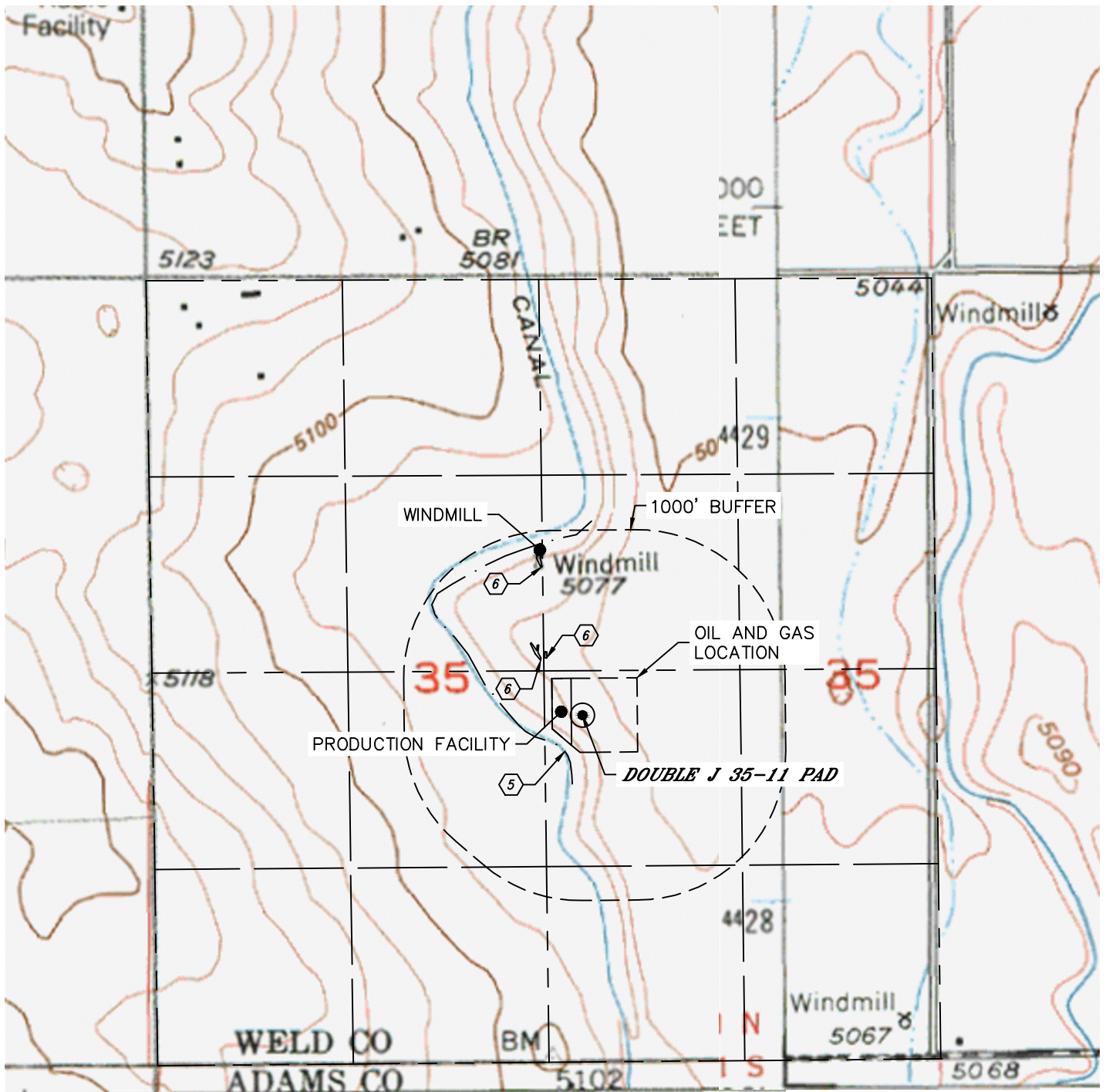


Lat40°, Inc. 6250 W. 10th Street, Unit 2, Greeley, CO 970-515-5294

# HYDROLOGY MAP

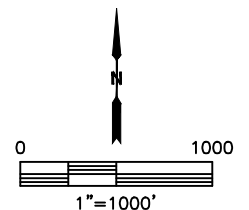
**DOUBLE J 35-11 PAD**

SECTION: 35  
TOWNSHIP: 1N  
RANGE: 65W  
6TH. P.M.  
WELD COUNTY, CO



DISTANCES MEASURED FROM THE EDGE OF THE OIL AND GAS LOCATION.

- ⑤ CANAL 58' SW
- ⑥ LOW AREA 143', 144' & 757' NW



DATE: 11/15/2017  
PROJECT#: 2017081