

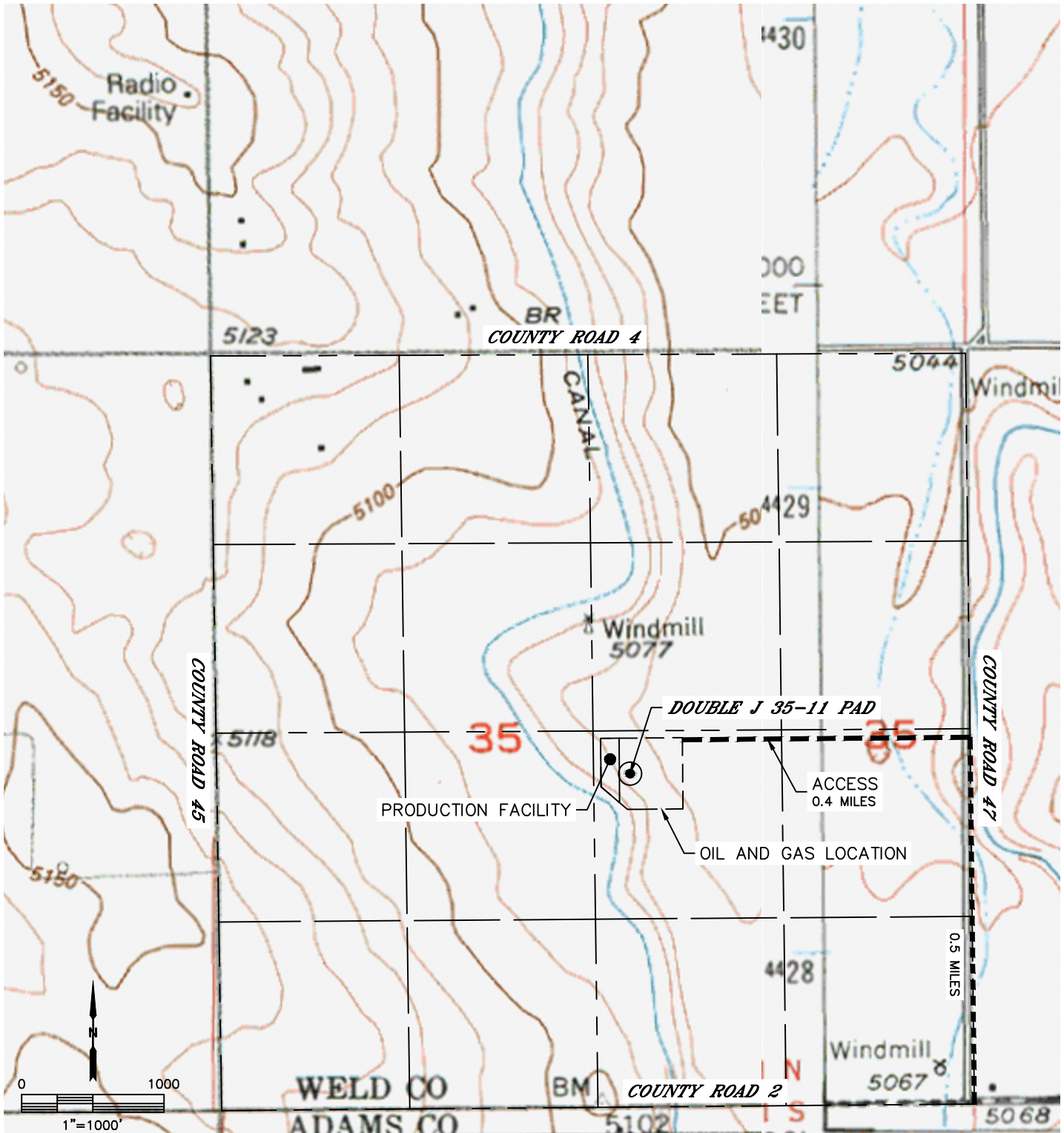


ACCESS ROAD MAP

DOUBLE J 35-11 PAD

SECTION: 35
TOWNSHIP: 1N
RANGE: 65W
6TH. P.M.
WELD COUNTY, CO

DRIVING DIRECTIONS TO DOUBLE J 35-11 PAD:
FROM THE INTERSECTION OF COUNTY ROAD 47 AND COUNTY ROAD 2, DRIVE NORTH ON COUNTY ROAD 47 FOR 0.5 MILES TO A PROPOSED ACCESS ROAD. TURN WEST AND DRIVE ON PROPOSED ACCESS FOR 0.4 MILES TO THE PROPOSED DOUBLE J 35-11 PAD.





Lat40°, Inc. 6250 W. 10th Street, Unit 2, Greeley, CO 970-515-5294

ACCESS ROAD MAP

DOUBLE J 35-11 PAD

SECTION: 35
TOWNSHIP: 1N
RANGE: 65W
6TH. P.M.
WELD COUNTY, CO

