

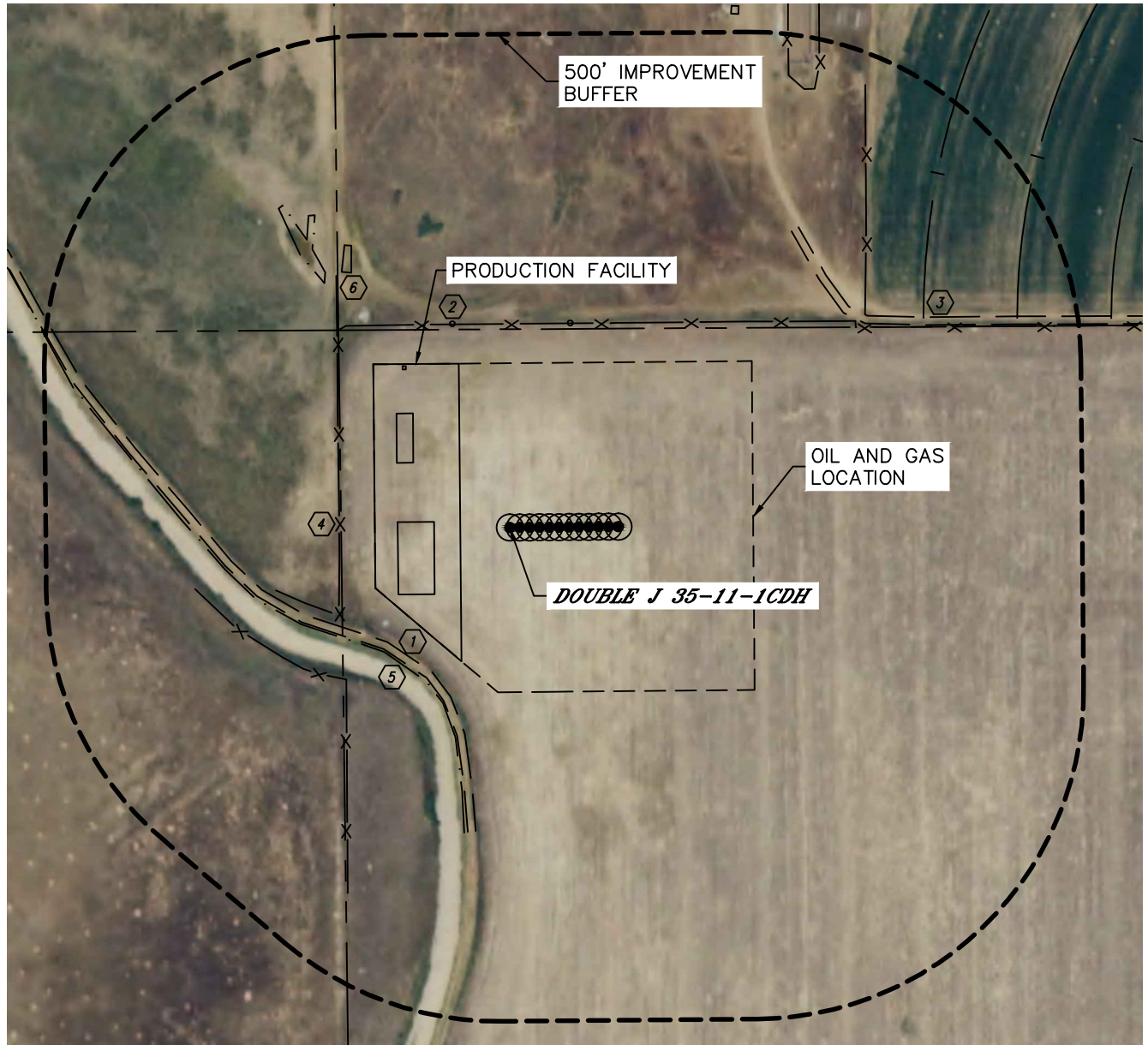


Lat40°, Inc. 6250 W. 10th Street, Unit 2, Greeley, CO 970-515-5294

LOCATION DRAWING

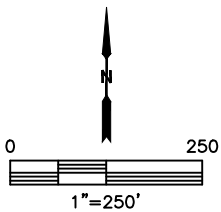
DOUBLE J 35-11 PAD

SECTION: 35
TOWNSHIP: 1N
RANGE: 65W
6TH. P.M.
WELD COUNTY, CO



IMPROVEMENTS:
(MEASURED FROM THE PROPOSED DOUBLE J 35-11-1CDH WELL LOCATION)

- BUI NO BUILDING UNITS WITHIN 500' IMPROVEMENT BUFFER
- B1 NO BUILDINGS WITHIN 500' IMPROVEMENT BUFFER
- 1 ROAD 248' SW, 602' NE
- 2 PIPE 322' NW, 324' NE
- 3 PIVOT TRACK 705' & 834' NE
- 4 FENCE 259' W, 310' N, 339' SW, 630' & 803' NE
- 5 CANAL 264' SW
- 6 LOW AREA 456' & 466' NW



DATE: 11/15/2017
PROJECT#: 2017081