

NOBLE ENERGY, INC

Location: COLORADO Slot: SLOT#03 HURLEY H26-762(2366°FNL&1341°FWL,SEC.26)
Field: WELD COUNTY (NOBLE NAD 83 GRID) Well: HURLEY H26-762
Facility: SEC.26-T03N-R65W Wellbore: HURLEY H26-762 PWB

Plot reference wellpath is HURLEY H26-762 (REV-A.0) PWP	Grid System: NAD83 / Lambert Colorado SP, Northern Zone (501), US feet
True vertical depths are referenced to Rig (30°KB) (RKB)	North Reference: Grid north
Measured depths are referenced to Rig (30°KB) (RKB)	Scale: True distance
Rig (30°KB) (RKB) to Mean Sea Level: 4852 feet	Depths are in feet
Mean Sea Level to Ground level (At Slot: SLOT#03 HURLEY H26-762(2366°FNL&1341°FWL,SEC.26)): 0 feet	Created by: amuntime on 2018-06-15
Coordinates are in feet referenced to Slot	Database: WA DENVER

Survey Program

Start MD (ft)	End MD (ft)	Tool	Model	Log Name/Comment	Wellbore
30.00	16165.91	OWSG MWD rev2	OWSG MWD rev2 + IFR1 + Multi-Station Correction		HURLEY H26-762 PWB

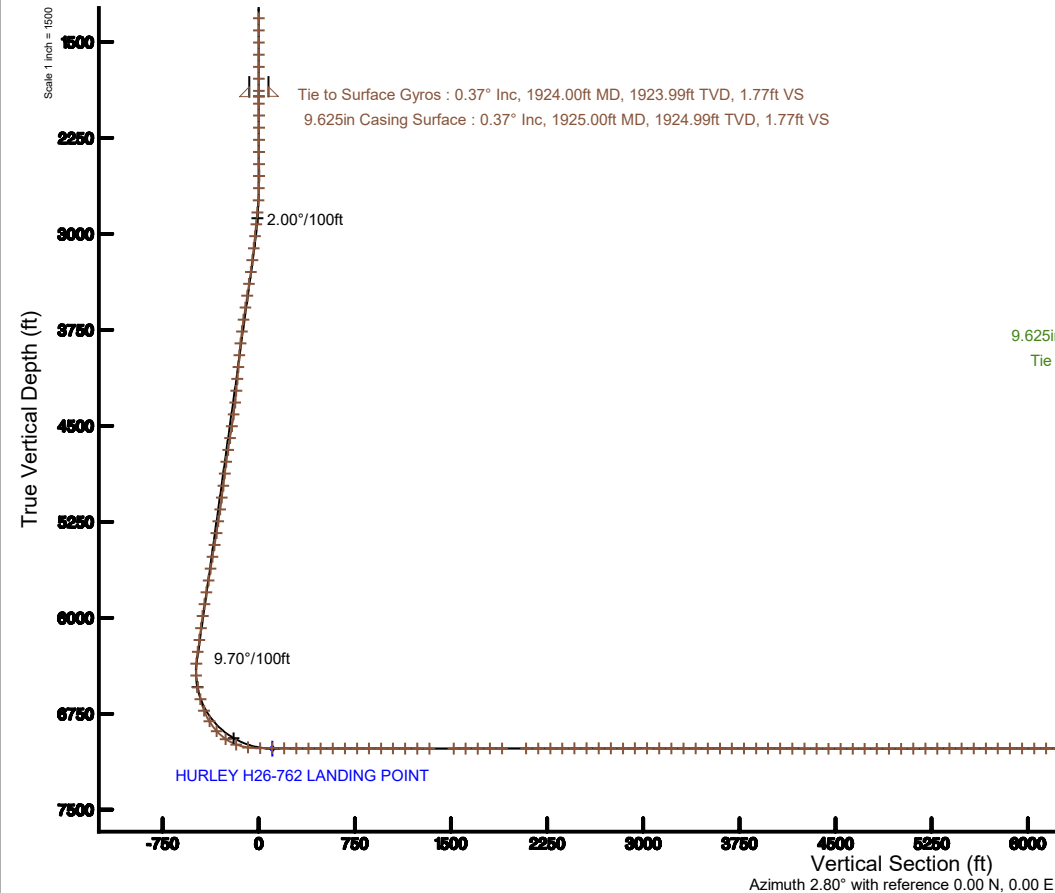
Comments

SURFACE LOCATION: SENW

40.1971N

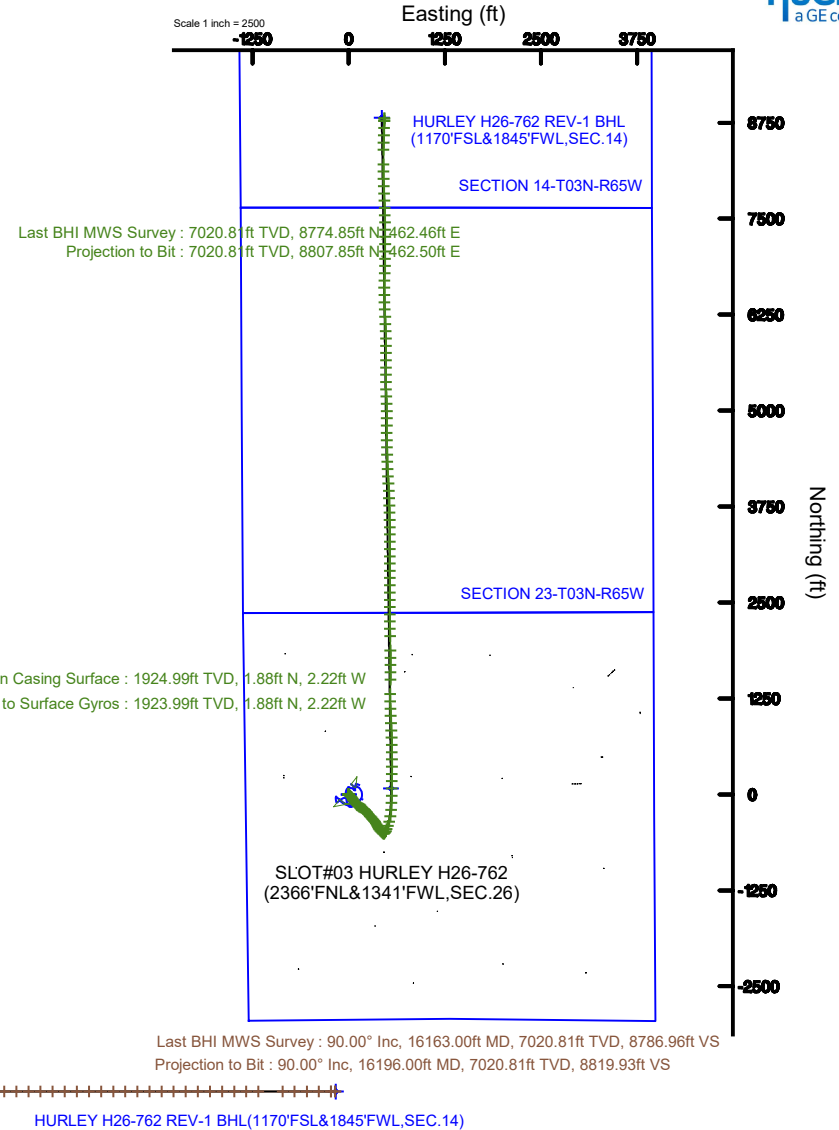
104.63541W

API: 05-123-46767



Location Information

Facility Name			Grid East (US ft)	Grid North (US ft)	Latitude	Longitude
SEC.26-T03N-R65W			3241514.116	1315823.443	40°11'49.560"N	104°38'07.476"W
Slot	Local N (ft)	Local E (ft)	Grid East (US ft)	Grid North (US ft)	Latitude	Longitude
SLOT#03 HURLEY H26-762(2366°FNL&1341°FWL,SEC.26)	0.00	0.00	3241514.116	1315823.443	40°11'49.560"N	104°38'07.476"W
Rig (30°KB) (RKB) to Ground level (At Slot: SLOT#03 HURLEY H26-762(2366°FNL&1341°FWL,SEC.26))					4852#	
Mean Sea Level to Ground level (At Slot: SLOT#03 HURLEY H26-762(2366°FNL&1341°FWL,SEC.26))					0#	
Rig (30°KB) (RKB) to Mean Sea Level					4852#	





Actual Wellpath Report

HURLEY H26-762 AWP

Page n of nn



REFERENCE WELLPATH IDENTIFICATION			
Operator	NOBLE ENERGY, INC	Slot	SLOT#03 HURLEY H26-762(2366'FNL&1341'FWL,SEC.26)
Area	COLORADO	Well	HURLEY H26-762
Field	WELD COUNTY (NOBLE NAD 83 GRID)	Wellbore	HURLEY H26-762 AWB
Facility	SEC.26-T03N-R65W		

REPORT SETUP INFORMATION			
Projection System	NAD83 / Lambert Colorado SP, Northern Zone (501), US feet	Software System	WellArchitect® 5.1
North Reference	Grid	User	Amuntime
Scale	0.999957	Report Generated	6/15/2018 at 1:20:59 PM
Convergence at slot	0.56° East	Database/Source file	WA DENVER/HURLEY_H26-762_AWP.xml

WELLPATH LOCATION						
	Local coordinates		Grid coordinates		Geographic coordinates	
	North[ft]	East[ft]	Easting[US ft]	Northing[US ft]	Latitude	Longitude
Slot Location	0.00	0.00	3241514.12	1315823.44	40°11'49.560"N	104°38'07.476"W
Facility Reference Pt			3241514.12	1315823.44	40°11'49.560"N	104°38'07.476"W
Field Reference Pt			3000000.00	4454105.15	48°46'34.315"N	105°30'00.000"W

WELLPATH DATUM			
Calculation method	Minimum curvature	Rig (30'KB) (RKB) to Facility Vertical Datum	4852.00ft
Horizontal Reference Pt	Slot	Rig (30'KB) (RKB) to Mean Sea Level	4852.00ft
Vertical Reference Pt	Rig (30'KB) (RKB)	Rig (30'KB) (RKB) to Ground Level at Slot (SLOT#03 HURLEY H26-762 (2366'FNL&1341'FWL,SEC.26))	4852.00ft
MD Reference Pt	Rig (30'KB) (RKB)	Section Origin	N 0.00, E 0.00 ft
Field Vertical Reference	Mean Sea Level	Section Azimuth	2.80°



Actual Wellpath Report

HURLEY H26-762 AWP

Page n of nn



REFERENCE WELLPATH IDENTIFICATION			
Operator	NOBLE ENERGY, INC	Slot	SLOT#03 HURLEY H26-762(2366'FNL&1341'FWL,SEC.26)
Area	COLORADO	Well	HURLEY H26-762
Field	WELD COUNTY (NOBLE NAD 83 GRID)	Wellbore	HURLEY H26-762 AWP
Facility	SEC.26-T03N-R65W		

WELLPATH DATA (171 stations)										
MD [ft]	Inclination [°]	Azimuth [°]	TVD [ft]	Vert Sect [ft]	North [ft]	East [ft]	Latitude	Longitude	DLS [°/100ft]	Comments
0.00	0.000	218.580	0.00	0.00	0.00	0.00	40°11'49.560"N	104°38'07.476"W	0.00	
85.00	0.200	218.580	85.00	-0.12	-0.12	-0.09	40°11'49.559"N	104°38'07.477"W	0.24	
181.00	0.150	298.800	181.00	-0.20	-0.19	-0.31	40°11'49.558"N	104°38'07.480"W	0.24	
275.00	0.330	14.440	275.00	0.12	0.14	-0.35	40°11'49.561"N	104°38'07.480"W	0.35	
370.00	0.290	259.880	370.00	0.33	0.36	-0.52	40°11'49.564"N	104°38'07.483"W	0.55	
464.00	0.100	321.570	464.00	0.34	0.38	-0.80	40°11'49.564"N	104°38'07.486"W	0.27	
559.00	0.190	247.110	559.00	0.33	0.38	-1.00	40°11'49.564"N	104°38'07.489"W	0.20	
653.00	0.160	285.720	653.00	0.30	0.36	-1.27	40°11'49.564"N	104°38'07.492"W	0.13	
748.00	0.260	54.930	748.00	0.46	0.52	-1.22	40°11'49.565"N	104°38'07.492"W	0.40	
842.00	0.410	73.450	841.99	0.70	0.74	-0.72	40°11'49.567"N	104°38'07.485"W	0.19	
937.00	0.050	78.510	936.99	0.82	0.84	-0.36	40°11'49.568"N	104°38'07.480"W	0.38	
1031.00	0.090	333.700	1030.99	0.90	0.92	-0.35	40°11'49.569"N	104°38'07.480"W	0.12	
1126.00	0.070	319.110	1125.99	1.01	1.03	-0.42	40°11'49.570"N	104°38'07.481"W	0.03	
1220.00	0.100	229.680	1219.99	0.99	1.02	-0.52	40°11'49.570"N	104°38'07.483"W	0.13	
1315.00	0.120	321.230	1314.99	1.01	1.04	-0.64	40°11'49.570"N	104°38'07.484"W	0.17	
1409.00	0.060	322.650	1408.99	1.12	1.16	-0.74	40°11'49.572"N	104°38'07.485"W	0.06	
1504.00	0.090	198.820	1503.99	1.09	1.13	-0.79	40°11'49.571"N	104°38'07.486"W	0.14	
1598.00	0.180	274.320	1597.99	1.02	1.07	-0.96	40°11'49.571"N	104°38'07.488"W	0.19	
1693.00	0.330	303.140	1692.99	1.16	1.23	-1.34	40°11'49.572"N	104°38'07.493"W	0.20	
1787.00	0.210	322.000	1786.99	1.43	1.51	-1.67	40°11'49.575"N	104°38'07.497"W	0.16	
1882.00	0.300	293.880	1881.99	1.65	1.75	-2.01	40°11'49.577"N	104°38'07.502"W	0.16	
1924.00	0.370	306.970	1923.99	1.77	1.88	-2.22	40°11'49.579"N	104°38'07.504"W	0.25	Tie to Surface Gyros
1981.00	0.640	338.400	1980.99	2.16	2.28	-2.48	40°11'49.583"N	104°38'07.508"W	0.66	
2075.00	0.030	92.640	2074.99	2.64	2.77	-2.65	40°11'49.588"N	104°38'07.510"W	0.69	
2170.00	0.000	7.570	2169.99	2.64	2.77	-2.62	40°11'49.588"N	104°38'07.509"W	0.03	
2264.00	0.030	229.830	2263.99	2.62	2.75	-2.64	40°11'49.587"N	104°38'07.510"W	0.03	
2359.00	0.090	298.830	2358.99	2.64	2.77	-2.73	40°11'49.588"N	104°38'07.511"W	0.09	
2454.00	0.060	56.050	2453.99	2.70	2.84	-2.75	40°11'49.588"N	104°38'07.511"W	0.14	
2548.00	0.100	36.070	2547.99	2.80	2.93	-2.66	40°11'49.589"N	104°38'07.510"W	0.05	
2643.00	1.420	136.960	2642.98	2.05	2.14	-1.81	40°11'49.581"N	104°38'07.499"W	1.52	
2737.00	5.050	139.300	2736.81	-1.77	-1.85	1.68	40°11'49.542"N	104°38'07.455"W	3.86	
2832.00	8.720	137.250	2831.11	-9.85	-10.31	9.30	40°11'49.457"N	104°38'07.357"W	3.87	
2926.00	8.760	132.020	2924.02	-19.36	-20.34	19.46	40°11'49.357"N	104°38'07.228"W	0.85	
3021.00	8.720	132.390	3017.92	-28.53	-30.03	30.15	40°11'49.260"N	104°38'07.091"W	0.07	
3115.00	8.710	141.520	3110.84	-38.42	-40.41	39.84	40°11'49.157"N	104°38'06.968"W	1.47	
3209.00	8.770	146.100	3203.74	-49.51	-51.93	48.27	40°11'49.042"N	104°38'06.861"W	0.74	
3304.00	9.480	147.030	3297.54	-61.67	-64.51	56.56	40°11'48.917"N	104°38'06.755"W	0.76	
3398.00	10.680	147.770	3390.09	-75.08	-78.37	65.42	40°11'48.779"N	104°38'06.643"W	1.28	
3493.00	10.780	146.170	3483.43	-89.42	-93.19	75.06	40°11'48.632"N	104°38'06.520"W	0.33	
3587.00	10.730	148.450	3575.78	-103.70	-107.95	84.54	40°11'48.485"N	104°38'06.400"W	0.46	
3682.00	11.150	142.720	3669.05	-118.03	-122.80	94.73	40°11'48.337"N	104°38'06.271"W	1.23	
3776.00	10.950	135.080	3761.32	-130.99	-136.35	106.54	40°11'48.202"N	104°38'06.120"W	1.57	
3871.00	11.120	125.070	3854.57	-141.95	-148.01	120.41	40°11'48.086"N	104°38'05.943"W	2.02	
3965.00	11.030	120.010	3946.82	-150.91	-157.71	135.61	40°11'47.988"N	104°38'05.748"W	1.04	
4060.00	11.340	118.220	4040.02	-159.07	-166.68	151.71	40°11'47.898"N	104°38'05.542"W	0.49	



Actual Wellpath Report

HURLEY H26-762 AWP

Page n of nn



REFERENCE WELLPATH IDENTIFICATION

Operator	NOBLE ENERGY, INC	Slot	SLOT#03 HURLEY H26-762(2366'FNL&1341'FWL,SEC.26)
Area	COLORADO	Well	HURLEY H26-762
Field	WELD COUNTY (NOBLE NAD 83 GRID)	Wellbore	HURLEY H26-762 AWP
Facility	SEC.26-T03N-R65W		

WELLPATH DATA (171 stations)

MD [ft]	Inclination [°]	Azimuth [°]	TVD [ft]	Vert Sect [ft]	North [ft]	East [ft]	Latitude	Longitude	DLS [°/100ft]	Comments
4154.00	11.540	117.110	4132.15	-166.91	-175.33	168.23	40°11'47.811"N	104°38'05.330"W	0.32	
4248.00	11.440	118.210	4224.26	-174.78	-184.02	184.81	40°11'47.724"N	104°38'05.118"W	0.26	
4343.00	11.450	126.120	4317.38	-184.00	-194.03	200.73	40°11'47.623"N	104°38'04.914"W	1.65	
4437.00	11.480	135.900	4409.51	-195.52	-206.25	214.78	40°11'47.501"N	104°38'04.734"W	2.07	
4532.00	11.540	143.700	4502.61	-209.36	-220.70	226.98	40°11'47.357"N	104°38'04.579"W	1.64	
4627.00	11.470	143.510	4595.70	-224.04	-235.95	238.23	40°11'47.205"N	104°38'04.436"W	0.08	
4721.00	11.440	143.550	4687.83	-238.50	-250.97	249.32	40°11'47.056"N	104°38'04.295"W	0.03	
4816.00	10.670	140.440	4781.07	-252.29	-265.32	260.52	40°11'46.913"N	104°38'04.152"W	1.02	
4910.00	10.690	136.200	4873.44	-264.71	-278.33	272.10	40°11'46.783"N	104°38'04.005"W	0.84	
5005.00	9.570	134.100	4966.96	-275.98	-290.18	283.87	40°11'46.665"N	104°38'03.855"W	1.24	
5099.00	11.560	136.530	5059.36	-287.65	-302.46	295.96	40°11'46.543"N	104°38'03.700"W	2.17	
5194.00	11.570	138.610	5152.43	-301.06	-316.51	308.81	40°11'46.403"N	104°38'03.536"W	0.44	
5289.00	11.600	140.000	5245.50	-314.90	-330.98	321.25	40°11'46.258"N	104°38'03.378"W	0.30	
5383.00	11.580	143.690	5337.58	-329.16	-345.82	332.91	40°11'46.111"N	104°38'03.230"W	0.79	
5478.00	11.510	148.980	5430.66	-344.43	-361.62	343.44	40°11'45.953"N	104°38'03.096"W	1.12	
5572.00	11.580	146.630	5522.76	-359.84	-377.54	353.46	40°11'45.795"N	104°38'02.969"W	0.51	
5667.00	11.540	145.980	5615.83	-375.14	-393.38	364.02	40°11'45.638"N	104°38'02.835"W	0.14	
5762.00	11.520	155.810	5708.92	-391.20	-409.91	373.23	40°11'45.473"N	104°38'02.718"W	2.07	
5856.00	11.010	153.690	5801.11	-407.41	-426.52	381.05	40°11'45.309"N	104°38'02.619"W	0.70	
5951.00	10.980	147.910	5894.37	-422.76	-442.32	389.88	40°11'45.152"N	104°38'02.508"W	1.16	
6045.00	10.870	142.690	5986.67	-436.88	-456.95	400.01	40°11'45.006"N	104°38'02.379"W	1.06	
6140.00	10.990	137.240	6079.95	-450.07	-470.72	411.58	40°11'44.869"N	104°38'02.232"W	1.09	
6234.00	10.980	136.440	6172.23	-462.52	-483.79	423.84	40°11'44.739"N	104°38'02.075"W	0.16	
6329.00	11.030	137.510	6265.48	-475.16	-497.05	436.21	40°11'44.606"N	104°38'01.918"W	0.22	
6423.00	10.080	130.310	6357.89	-486.50	-509.00	448.56	40°11'44.487"N	104°38'01.760"W	1.73	
6518.00	9.020	64.560	6451.83	-488.04	-511.19	461.66	40°11'44.464"N	104°38'01.591"W	10.92	
6612.00	13.750	31.410	6544.05	-474.73	-498.47	474.15	40°11'44.589"N	104°38'01.429"W	8.40	
6707.00	13.360	18.560	6636.42	-454.25	-478.42	483.53	40°11'44.786"N	104°38'01.305"W	3.19	
6801.00	22.830	20.980	6725.67	-426.41	-451.04	493.54	40°11'45.055"N	104°38'01.173"W	10.10	
6896.00	33.130	20.760	6809.46	-384.09	-409.44	509.39	40°11'45.465"N	104°38'00.964"W	10.84	
6992.00	41.900	14.870	6885.55	-327.66	-353.80	526.95	40°11'46.013"N	104°38'00.730"W	9.86	
7087.00	55.880	9.530	6947.89	-257.21	-283.98	541.68	40°11'46.702"N	104°38'00.532"W	15.30	
7180.00	69.570	3.950	6990.43	-174.97	-202.11	551.11	40°11'47.510"N	104°38'00.400"W	15.65	
7274.00	82.940	2.910	7012.71	-83.87	-111.17	556.53	40°11'48.408"N	104°38'00.318"W	14.26	
7369.00	90.310	0.440	7018.30	10.87	-16.45	559.30	40°11'49.344"N	104°38'00.271"W	8.18	
7463.00	89.320	0.130	7018.61	104.78	77.55	559.76	40°11'50.272"N	104°38'00.253"W	1.10	
7558.00	89.380	0.470	7019.69	199.68	172.54	560.26	40°11'51.211"N	104°38'00.235"W	0.36	
7652.00	89.350	0.790	7020.73	293.61	266.53	561.29	40°11'52.140"N	104°38'00.210"W	0.34	
7747.00	89.780	0.390	7021.45	388.54	361.52	562.27	40°11'53.078"N	104°38'00.185"W	0.62	
7842.00	89.850	359.200	7021.76	483.40	456.52	561.93	40°11'54.017"N	104°38'00.177"W	1.25	
7936.00	90.460	359.620	7021.50	577.24	550.51	560.96	40°11'54.946"N	104°38'00.178"W	0.79	
8031.00	89.820	359.330	7021.27	672.08	645.51	560.09	40°11'55.885"N	104°38'00.177"W	0.74	
8126.00	89.910	358.220	7021.49	766.84	740.48	558.06	40°11'56.823"N	104°38'00.191"W	1.17	
8220.00	89.910	357.260	7021.64	860.47	834.41	554.36	40°11'57.752"N	104°38'00.227"W	1.02	
8314.00	89.910	357.130	7021.79	954.03	928.30	549.76	40°11'58.680"N	104°38'00.275"W	0.14	



Actual Wellpath Report

HURLEY H26-762 AWP

Page n of nn



REFERENCE WELLPATH IDENTIFICATION

Operator	NOBLE ENERGY, INC	Slot	SLOT#03 HURLEY H26-762(2366'FNL&1341'FWL,SEC.26)
Area	COLORADO	Well	HURLEY H26-762
Field	WELD COUNTY (NOBLE NAD 83 GRID)	Wellbore	HURLEY H26-762 AWP
Facility	SEC.26-T03N-R65W		

WELLPATH DATA (171 stations)

MD [ft]	Inclination [°]	Azimuth [°]	TVD [ft]	Vert Sect [ft]	North [ft]	East [ft]	Latitude	Longitude	DLS [°/100ft]	Comments
8409.00	89.880	358.150	7021.96	1048.64	1023.22	545.84	40°11'59.618"N	104°38'00.313"W	1.07	
8503.00	89.880	358.200	7022.16	1142.33	1117.17	542.85	40°12'00.547"N	104°38'00.340"W	0.05	
8598.00	89.850	358.960	7022.38	1237.08	1212.14	540.50	40°12'01.486"N	104°38'00.358"W	0.80	
8692.00	89.940	0.480	7022.55	1330.94	1306.13	540.04	40°12'02.414"N	104°38'00.353"W	1.62	
8882.00	90.120	0.730	7022.46	1520.80	1496.12	542.04	40°12'04.292"N	104°38'00.303"W	0.16	
8976.00	90.030	0.780	7022.33	1614.74	1590.11	543.28	40°12'05.220"N	104°38'00.275"W	0.11	
9071.00	90.220	0.440	7022.13	1709.67	1685.11	544.29	40°12'06.159"N	104°38'00.250"W	0.41	
9165.00	90.090	359.000	7021.87	1803.53	1779.10	543.83	40°12'07.088"N	104°38'00.244"W	1.54	
9260.00	90.120	358.560	7021.70	1898.30	1874.08	541.81	40°12'08.027"N	104°38'00.258"W	0.46	
9449.00	90.220	359.040	7021.14	2086.83	2063.04	537.85	40°12'09.894"N	104°38'00.285"W	0.26	
9543.00	90.150	359.170	7020.83	2180.64	2157.03	536.38	40°12'10.823"N	104°38'00.292"W	0.16	
9638.00	90.150	359.360	7020.58	2275.46	2252.02	535.17	40°12'11.762"N	104°38'00.296"W	0.20	
9732.00	90.150	359.670	7020.34	2369.30	2346.02	534.37	40°12'12.691"N	104°38'00.295"W	0.33	
9827.00	90.090	359.960	7020.14	2464.17	2441.01	534.06	40°12'13.629"N	104°38'00.287"W	0.31	
9921.00	90.120	0.310	7019.97	2558.07	2535.01	534.29	40°12'14.558"N	104°38'00.272"W	0.37	
10015.00	89.820	0.530	7020.02	2651.99	2629.01	534.97	40°12'15.487"N	104°38'00.251"W	0.40	
10110.00	89.910	0.470	7020.24	2746.91	2724.01	535.80	40°12'16.426"N	104°38'00.229"W	0.11	
10205.00	89.910	359.570	7020.39	2841.80	2819.01	535.84	40°12'17.364"N	104°38'00.216"W	0.95	
10299.00	90.460	359.770	7020.09	2935.66	2913.00	535.30	40°12'18.293"N	104°38'00.211"W	0.62	
10394.00	89.850	359.790	7019.83	3030.53	3008.00	534.93	40°12'19.232"N	104°38'00.204"W	0.64	
10488.00	89.750	0.200	7020.16	3124.41	3102.00	534.92	40°12'20.161"N	104°38'00.192"W	0.45	
10583.00	90.000	0.310	7020.36	3219.32	3197.00	535.35	40°12'21.100"N	104°38'00.175"W	0.29	
10678.00	89.880	359.760	7020.46	3314.21	3292.00	535.40	40°12'22.038"N	104°38'00.162"W	0.59	
10772.00	89.940	359.570	7020.61	3408.07	3386.00	534.85	40°12'22.967"N	104°38'00.157"W	0.21	
10867.00	89.880	359.370	7020.76	3502.91	3480.99	533.97	40°12'23.906"N	104°38'00.157"W	0.22	
10962.00	89.880	359.180	7020.96	3597.73	3575.99	532.77	40°12'24.845"N	104°38'00.160"W	0.20	
11056.00	89.850	358.570	7021.18	3691.51	3669.97	530.93	40°12'25.774"N	104°38'00.172"W	0.65	
11151.00	89.910	358.220	7021.38	3786.23	3764.93	528.27	40°12'26.712"N	104°38'00.195"W	0.37	
11245.00	89.910	357.840	7021.53	3879.90	3858.87	525.03	40°12'27.641"N	104°38'00.224"W	0.40	
11340.00	89.850	357.480	7021.73	3974.52	3953.79	521.16	40°12'28.579"N	104°38'00.262"W	0.38	
11435.00	89.880	356.880	7021.95	4069.06	4048.68	516.48	40°12'29.517"N	104°38'00.311"W	0.63	
11529.00	89.780	356.860	7022.23	4162.56	4142.54	511.35	40°12'30.445"N	104°38'00.365"W	0.11	
11624.00	89.780	357.410	7022.59	4257.10	4237.42	506.60	40°12'31.383"N	104°38'00.414"W	0.58	
11719.00	89.820	357.770	7022.93	4351.70	4332.33	502.61	40°12'32.321"N	104°38'00.454"W	0.38	
11813.00	89.910	358.830	7023.15	4445.41	4426.29	499.82	40°12'33.250"N	104°38'00.478"W	1.13	
11907.00	89.880	359.420	7023.32	4539.22	4520.28	498.38	40°12'34.179"N	104°38'00.485"W	0.63	
12002.00	89.880	357.520	7023.52	4633.94	4615.24	495.85	40°12'35.118"N	104°38'00.505"W	2.00	
12096.00	89.940	0.520	7023.67	4727.73	4709.22	494.24	40°12'36.046"N	104°38'00.514"W	3.19	
12191.00	90.180	0.840	7023.57	4822.66	4804.21	495.37	40°12'36.985"N	104°38'00.488"W	0.42	
12286.00	90.150	359.950	7023.29	4917.58	4899.21	496.02	40°12'37.924"N	104°38'00.467"W	0.94	
12380.00	90.180	359.020	7023.02	5011.42	4993.20	495.18	40°12'38.853"N	104°38'00.466"W	0.99	
12475.00	90.220	358.460	7022.69	5106.18	5088.18	493.09	40°12'39.791"N	104°38'00.481"W	0.59	
12570.00	90.120	357.750	7022.41	5200.86	5183.12	489.95	40°12'40.730"N	104°38'00.510"W	0.75	
12664.00	90.120	357.780	7022.21	5294.50	5277.05	486.28	40°12'41.658"N	104°38'00.545"W	0.03	
12759.00	90.250	359.450	7021.90	5389.24	5372.02	483.98	40°12'42.597"N	104°38'00.563"W	1.76	



Actual Wellpath Report

HURLEY H26-762 AWP

Page n of nn



REFERENCE WELLPATH IDENTIFICATION

Operator	NOBLE ENERGY, INC	Slot	SLOT#03 HURLEY H26-762(2366'FNL&1341'FWL,SEC.26)
Area	COLORADO	Well	HURLEY H26-762
Field	WELD COUNTY (NOBLE NAD 83 GRID)	Wellbore	HURLEY H26-762 AWP
Facility	SEC.26-T03N-R65W		

WELLPATH DATA (171 stations)

MD [ft]	Inclination [°]	Azimuth [°]	TVD [ft]	Vert Sect [ft]	North [ft]	East [ft]	Latitude	Longitude	DLS [°/100ft]	Comments
12854.00	90.150	0.590	7021.57	5484.13	5467.02	484.02	40°12'43.536"N	104°38'00.550"W	1.20	
12948.00	90.000	1.090	7021.45	5578.07	5561.01	485.40	40°12'44.464"N	104°38'00.521"W	0.56	
13043.00	89.940	0.250	7021.50	5673.01	5656.00	486.51	40°12'45.403"N	104°38'00.495"W	0.89	
13137.00	90.030	359.750	7021.52	5766.89	5750.00	486.51	40°12'46.332"N	104°38'00.483"W	0.54	
13232.00	90.000	359.170	7021.50	5861.73	5844.99	485.61	40°12'47.270"N	104°38'00.482"W	0.61	
13326.00	90.000	358.680	7021.50	5955.52	5938.98	483.85	40°12'48.199"N	104°38'00.493"W	0.52	
13421.00	90.060	358.200	7021.45	6050.24	6033.94	481.26	40°12'49.138"N	104°38'00.515"W	0.51	
13515.00	89.910	358.040	7021.47	6143.93	6127.89	478.18	40°12'50.067"N	104°38'00.542"W	0.23	
13610.00	89.880	357.330	7021.65	6238.55	6222.81	474.34	40°12'51.005"N	104°38'00.580"W	0.75	
13704.00	90.060	357.320	7021.70	6332.12	6316.71	469.95	40°12'51.933"N	104°38'00.625"W	0.19	
13799.00	90.000	357.660	7021.65	6426.71	6411.62	465.79	40°12'52.871"N	104°38'00.666"W	0.36	
13893.00	90.000	359.110	7021.65	6520.43	6505.58	463.14	40°12'53.800"N	104°38'00.689"W	1.54	
13988.00	89.970	0.260	7021.67	6615.29	6600.58	462.62	40°12'54.739"N	104°38'00.683"W	1.21	
14082.00	90.030	1.630	7021.67	6709.24	6694.56	464.17	40°12'55.668"N	104°38'00.652"W	1.46	
14177.00	89.970	2.620	7021.67	6804.23	6789.50	467.69	40°12'56.605"N	104°38'00.594"W	1.04	
14271.00	90.060	1.910	7021.65	6898.23	6883.42	471.41	40°12'57.533"N	104°38'00.535"W	0.76	
14366.00	89.970	0.610	7021.62	6993.19	6978.40	473.50	40°12'58.471"N	104°38'00.496"W	1.37	
14461.00	90.120	0.510	7021.55	7088.12	7073.39	474.43	40°12'59.410"N	104°38'00.472"W	0.19	
14555.00	90.030	359.800	7021.43	7182.02	7167.39	474.68	40°13'00.339"N	104°38'00.457"W	0.76	
14650.00	90.000	359.660	7021.40	7276.88	7262.39	474.23	40°13'01.278"N	104°38'00.450"W	0.15	
14745.00	89.880	359.550	7021.50	7371.73	7357.39	473.58	40°13'02.216"N	104°38'00.447"W	0.17	
14839.00	90.120	358.440	7021.50	7465.52	7451.37	471.93	40°13'03.145"N	104°38'00.456"W	1.21	
14933.00	90.060	359.090	7021.35	7559.29	7545.35	469.90	40°13'04.074"N	104°38'00.471"W	0.69	
15028.00	89.940	357.690	7021.35	7654.01	7640.31	467.23	40°13'05.013"N	104°38'00.493"W	1.48	
15123.00	90.060	357.410	7021.35	7748.61	7735.22	463.17	40°13'05.951"N	104°38'00.533"W	0.32	
15217.00	90.060	357.420	7021.25	7842.20	7829.13	458.93	40°13'06.879"N	104°38'00.576"W	0.01	
15312.00	90.150	358.740	7021.08	7936.87	7924.07	455.75	40°13'07.818"N	104°38'00.605"W	1.39	
15407.00	90.000	358.770	7020.96	8031.63	8019.05	453.69	40°13'08.756"N	104°38'00.620"W	0.16	
15501.00	89.970	359.150	7020.98	8125.42	8113.03	451.98	40°13'09.685"N	104°38'00.630"W	0.41	
15595.00	89.970	359.380	7021.03	8219.24	8207.02	450.77	40°13'10.614"N	104°38'00.634"W	0.24	
15785.00	90.030	1.300	7021.03	8409.06	8397.01	451.90	40°13'12.491"N	104°38'00.595"W	1.01	
15879.00	90.060	1.760	7020.96	8503.04	8490.98	454.41	40°13'13.420"N	104°38'00.551"W	0.49	
15974.00	90.030	2.250	7020.88	8598.03	8585.92	457.74	40°13'14.358"N	104°38'00.496"W	0.52	
16068.00	90.030	1.710	7020.83	8692.02	8679.86	460.98	40°13'15.286"N	104°38'00.443"W	0.57	
16163.00	90.000	0.070	7020.81	8786.96	8774.85	462.46	40°13'16.224"N	104°38'00.412"W	1.73	Last BHI MWS Survey
16196.00	90.000	0.070	7020.81	8819.93	8807.85	462.50	40°13'16.550"N	104°38'00.407"W	0.00	Projection to Bit

HOLE & CASING SECTIONS - Ref Wellbore: HURLEY H26-762 AWP Ref Wellpath: HURLEY H26-762 AWP

String/Diameter	Start MD [ft]	End MD [ft]	Interval [ft]	Start TVD [ft]	End TVD [ft]	Start N/S [ft]	Start E/W [ft]	End N/S [ft]	End E/W [ft]
13.5in Open Hole	30.00	1925.00	1895.00	30.00	1924.99	-0.01	-0.01	1.88	-2.22
9.625in Casing Surface	30.00	1925.00	1895.00	30.00	1924.99	-0.01	-0.01	1.88	-2.22
8.5in Open Hole	1925.00	16196.00	14271.00	1924.99	7020.81	1.88	-2.22	8807.85	462.50



Actual Wellpath Report

HURLEY H26-762 AWP

Page n of nn



REFERENCE WELLPATH IDENTIFICATION			
Operator	NOBLE ENERGY, INC	Slot	SLOT#03 HURLEY H26-762(2366'FNL&1341'FWL,SEC.26)
Area	COLORADO	Well	HURLEY H26-762
Field	WELD COUNTY (NOBLE NAD 83 GRID)	Wellbore	HURLEY H26-762 AWB
Facility	SEC.26-T03N-R65W		

TARGETS								
Name	TVD [ft]	North [ft]	East [ft]	Grid East [US ft]	Grid North [US ft]	Latitude	Longitude	Shape
SECTION 14-T03N-R65W	0.00	0.00	0.00	3241514.12	1315823.44	40°11'49.560"N	104°38'07.476"W	polygon
SECTION 23-T03N-R65W	0.00	0.00	0.00	3241514.12	1315823.44	40°11'49.560"N	104°38'07.476"W	polygon
SECTION 26-T03N-R65W	0.00	0.00	0.00	3241514.12	1315823.44	40°11'49.560"N	104°38'07.476"W	polygon
HURLEY H26-762 LANDING POINT	7022.00	80.00	550.00	3242064.09	1315903.44	40°11'50.297"N	104°38'00.379"W	point
HURLEY H26-762 REV-1 BHL (1170'FSL&1845'FWL,SEC.14)	7022.00	8813.40	430.72	3241944.81	1324636.45	40°13'16.608"N	104°38'00.816"W	point

WELLPATH COMPOSITION - Ref Wellbore: HURLEY H26-762 AWB						Ref Wellpath: HURLEY H26-762 AWP	
Start MD [ft]	End MD [ft]	Positional Uncertainty Model		Log Name/Comment		Wellbore	
0.00	1924.00	Gyrodata standard - Drop gyro or Multi-shot		3rd Pary Surface Gyros <52'-1924'>		HURLEY H26-762 AWB	
1924.00	16163.00	OWSG MWD rev2 + IFR1 + Multi-Station Correction		BHGE/ATCurve OWSG MWD rev2+IFR+MSA <1981'-16163'>		HURLEY H26-762 AWB	
16163.00	16196.00	Blind Drilling (std)		Projection to bit		HURLEY H26-762 AWB	