

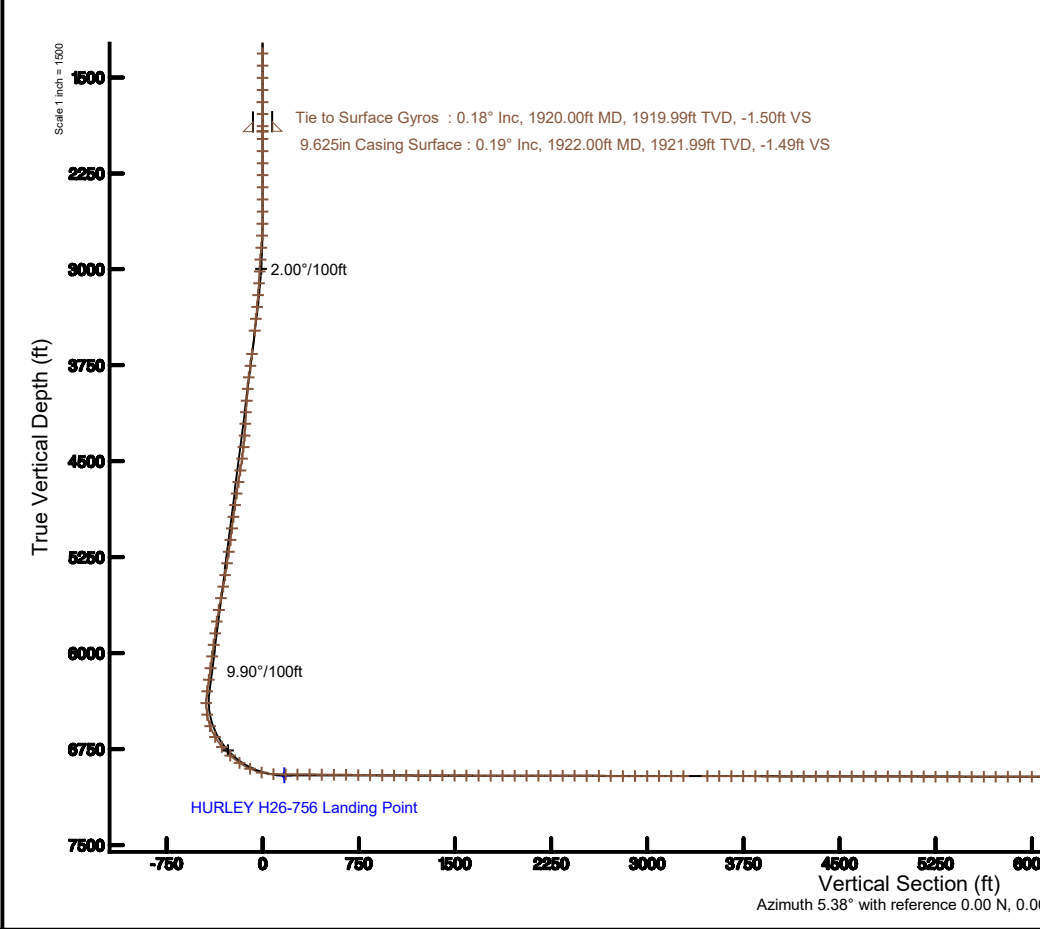
# NOBLE ENERGY, INC

Location: COLORADO	Slot: SLOT#02 HURLEY H26-756(2366*FNL&1364*FWL,SEC.26)	
Field: WELD COUNTY (NOBLE NAD 83 GRID)	Well: HURLEY H26-756	
Facility: SEC.26-T03N-R65W	Wellbore: HURLEY H26-756 PWB	

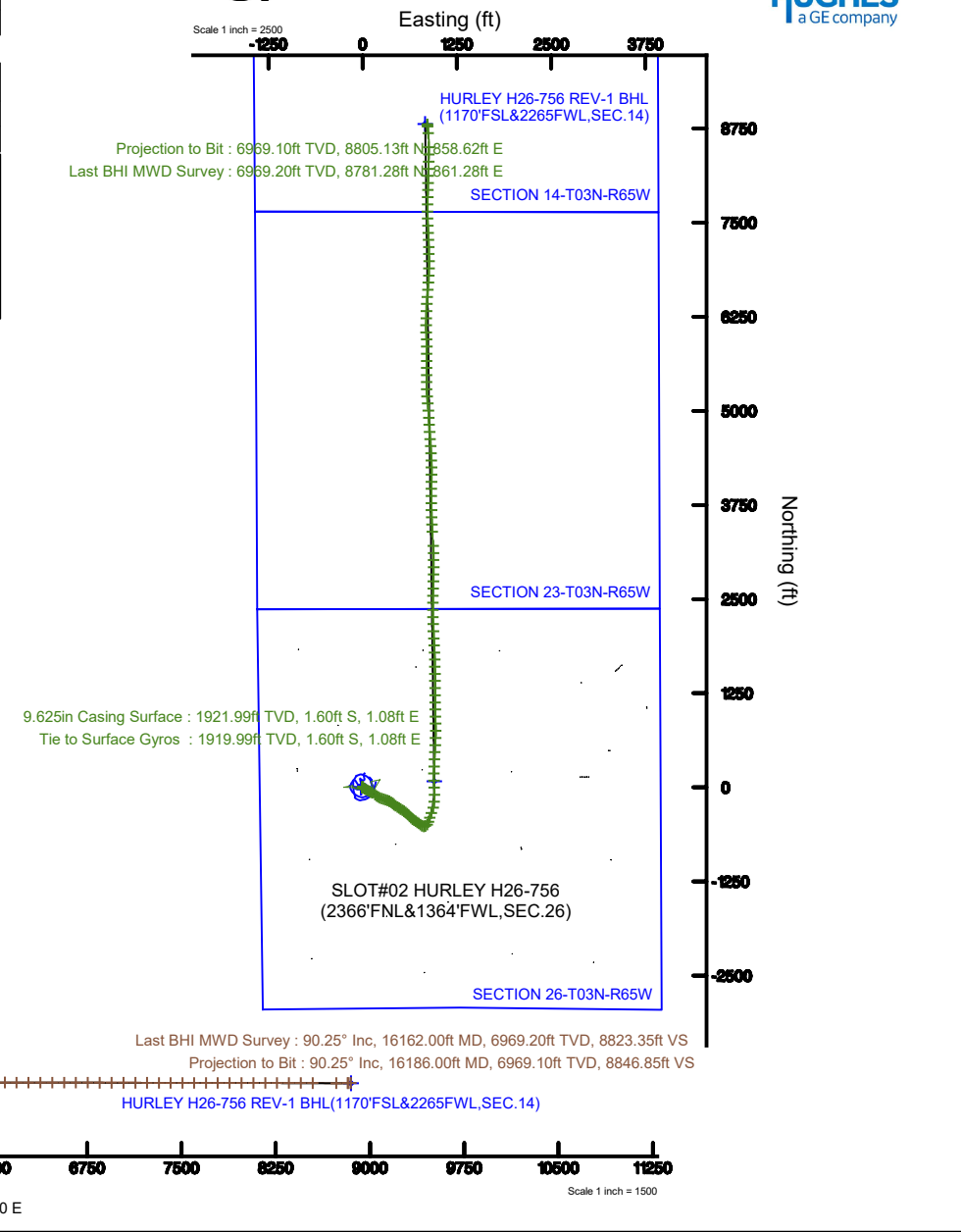
Plot reference wellpath is HURLEY H26-756 (REV-A.0) PWP	Grid System: NAD83 / Lambert Colorado SP, Northern Zone (501), US feet
True vertical depths are referenced to RIG (30KB) (RKB)	North Reference: Grid north
Measured depths are referenced to RIG (30KB) (RKB)	Scale: True distance
RIG (30KB) (RKB) to Mean Sea Level: 4852 feet	Depths are in feet
Mean Sea Level to Ground level (At Slot: SLOT#02 HURLEY H26-756(2366FNL&1364FWL,SEC.26); 0 feet	Created by: amunite on 2018-06-20
Coordinates are in feet referenced to Slot	Database: WA DENVER

Survey Program					
Start MD (ft)	End MD (ft)	Tool	Model	Log Name/Comment	Wellbore
30.00	16160.31	OWSG MWD rev2	OWSG MWD rev2 + IFR1 + Multi-Station Correction		HURLEY H26-756 PWB

Comments	
SURFACE LOCATION: SENW	
40.19710N	
104.63533W	
API: 05-123-46772	



Location Information						
Facility Name			Grid East (US ft)	Grid North (US ft)	Latitude	Longitude
SEC 26-T03N-R85W			3241514.116	1315823.443	40°1'149.560"N	104°38'07.476"W
Slot	Local N (ft)	Local E (ft)	Grid East (US ft)	Grid North (US ft)	Latitude	Longitude
SLOT#02 HURLEY H26-756(2366FNL&1364FWL_SEC.26)	0.22	22.35	3241536.462	1315823.661	40°1'149.560"N	104°38'07.188"W
RIG (30"KB) (RKB) to Ground level (At Slot: SLOT#02 HURLEY H26-756(2366FNL&1364FWL_SEC.26))					4852ft	
Mean Sea Level to Ground level (At Slot: SLOT#02 HURLEY H26-756(2366FNL&1364FWL_SEC.26))					0ft	
RIG (30"KB) (RKB) to Mean Sea Level					4852ft	





# Actual Wellpath Report

HURLEY H26-756 AWP  
Page n of nn



## REFERENCE WELLPATH IDENTIFICATION

Operator	NOBLE ENERGY, INC	Slot	SLOT#02 HURLEY H26-756(2366'FNL&1364'FWL,SEC.26)
Area	COLORADO	Well	HURLEY H26-756
Field	WELD COUNTY (NOBLE NAD 83 GRID)	Wellbore	HURLEY H26-756 AWB
Facility	SEC.26-T03N-R65W		

## REPORT SETUP INFORMATION

Projection System	NAD83 / Lambert Colorado SP, Northern Zone (501), US feet	Software System	WellArchitect® 5.1
North Reference	Grid	User	Amuntime
Scale	0.999957	Report Generated	6/20/2018 at 10:44:42 AM
Convergence at slot	0.56° East	Database/Source file	WA DENVER/HURLEY_H26-756_AWP.xml

## WELLPATH LOCATION

	Local coordinates		Grid coordinates		Geographic coordinates	
	North[ft]	East[ft]	Easting[US ft]	Northing[US ft]	Latitude	Longitude
Slot Location	0.22	22.35	3241536.46	1315823.66	40°11'49.560"N	104°38'07.188"W
Facility Reference Pt			3241514.12	1315823.44	40°11'49.560"N	104°38'07.476"W
Field Reference Pt			3000000.00	4454105.15	48°46'34.315"N	105°30'00.000"W

## WELLPATH DATUM

Calculation method	Minimum curvature	RIG (30'KB) (RKB) to Facility Vertical Datum	4852.00ft
Horizontal Reference Pt	Slot	RIG (30'KB) (RKB) to Mean Sea Level	4852.00ft
Vertical Reference Pt	RIG (30'KB) (RKB)	RIG (30'KB) (RKB) to Ground Level at Slot (SLOT#02 HURLEY H26-756 (2366'FNL&1364'FWL,SEC.26))	4852.00ft
MD Reference Pt	RIG (30'KB) (RKB)	Section Origin	N 0.00, E 0.00 ft
Field Vertical Reference	Mean Sea Level	Section Azimuth	5.38°



# Actual Wellpath Report

HURLEY H26-756 AWP

Page n of nn



## REFERENCE WELLPATH IDENTIFICATION

Operator	NOBLE ENERGY, INC	Slot	SLOT#02 HURLEY H26-756(2366'FNL&1364'FWL,SEC.26)
Area	COLORADO	Well	HURLEY H26-756
Field	WELD COUNTY (NOBLE NAD 83 GRID)	Wellbore	HURLEY H26-756 AWP
Facility	SEC.26-T03N-R65W		

## WELLPATH DATA (171 stations)

MD [ft]	Inclination [°]	Azimuth [°]	TVD [ft]	Vert Sect [ft]	North [ft]	East [ft]	Latitude	Longitude	DLS [°/100ft]	Comments
0.00	0.000	177.550	0.00	0.00	0.00	0.00	40°11'49.560"N	104°38'07.188"W	0.00	
84.90	0.230	177.550	84.90	-0.17	-0.17	0.01	40°11'49.558"N	104°38'07.188"W	0.27	
180.10	0.350	289.920	180.10	-0.29	-0.26	-0.26	40°11'49.557"N	104°38'07.191"W	0.51	
274.50	0.250	38.200	274.50	-0.04	0.00	-0.40	40°11'49.560"N	104°38'07.193"W	0.52	
369.10	0.390	16.100	369.10	0.45	0.47	-0.18	40°11'49.565"N	104°38'07.190"W	0.19	
463.70	0.110	336.370	463.70	0.85	0.86	-0.13	40°11'49.569"N	104°38'07.190"W	0.33	
558.20	0.070	359.890	558.20	0.98	1.00	-0.17	40°11'49.570"N	104°38'07.190"W	0.06	
652.70	0.220	165.980	652.70	0.87	0.88	-0.12	40°11'49.569"N	104°38'07.189"W	0.31	
747.20	0.360	77.380	747.19	0.79	0.77	0.21	40°11'49.568"N	104°38'07.185"W	0.44	
841.90	0.270	140.260	841.89	0.72	0.67	0.64	40°11'49.567"N	104°38'07.180"W	0.36	
936.40	0.220	153.450	936.39	0.41	0.33	0.87	40°11'49.563"N	104°38'07.177"W	0.08	
1030.80	0.220	187.680	1030.79	0.08	-0.01	0.92	40°11'49.560"N	104°38'07.176"W	0.14	
1125.30	0.280	207.880	1125.29	-0.32	-0.39	0.79	40°11'49.556"N	104°38'07.178"W	0.11	
1219.80	0.170	200.630	1219.79	-0.67	-0.73	0.63	40°11'49.553"N	104°38'07.180"W	0.12	
1314.10	0.090	191.810	1314.09	-0.87	-0.93	0.57	40°11'49.551"N	104°38'07.181"W	0.09	
1408.60	0.210	142.670	1408.59	-1.07	-1.14	0.66	40°11'49.549"N	104°38'07.180"W	0.18	
1503.20	0.310	147.110	1503.19	-1.40	-1.49	0.90	40°11'49.545"N	104°38'07.177"W	0.11	
1597.80	0.290	181.050	1597.79	-1.84	-1.95	1.04	40°11'49.541"N	104°38'07.175"W	0.19	
1692.30	0.110	11.560	1692.29	-1.99	-2.10	1.05	40°11'49.539"N	104°38'07.175"W	0.42	
1786.90	0.120	18.070	1786.89	-1.80	-1.92	1.10	40°11'49.541"N	104°38'07.174"W	0.02	
1881.50	0.140	348.480	1881.49	-1.60	-1.71	1.11	40°11'49.543"N	104°38'07.174"W	0.07	
1920.00	0.180	341.680	1919.99	-1.50	-1.60	1.08	40°11'49.544"N	104°38'07.174"W	0.11	Tie to Surface Gyros
1981.00	0.430	323.340	1980.99	-1.24	-1.33	0.91	40°11'49.547"N	104°38'07.176"W	0.43	
2075.00	0.070	194.710	2074.99	-1.03	-1.10	0.69	40°11'49.549"N	104°38'07.179"W	0.51	
2170.00	0.030	252.550	2169.99	-1.10	-1.17	0.65	40°11'49.548"N	104°38'07.180"W	0.06	
2264.00	0.030	136.630	2263.99	-1.13	-1.19	0.64	40°11'49.548"N	104°38'07.180"W	0.05	
2359.00	0.100	272.860	2358.98	-1.15	-1.21	0.58	40°11'49.548"N	104°38'07.181"W	0.13	
2454.00	0.030	41.020	2453.98	-1.13	-1.18	0.51	40°11'49.548"N	104°38'07.182"W	0.13	
2548.00	0.240	240.310	2547.98	-1.22	-1.26	0.35	40°11'49.548"N	104°38'07.184"W	0.29	
2643.00	1.910	120.290	2642.97	-2.00	-2.16	1.55	40°11'49.539"N	104°38'07.168"W	2.15	



# Actual Wellpath Report

HURLEY H26-756 AWP

Page n of nn



## REFERENCE WELLPATH IDENTIFICATION

Operator	NOBLE ENERGY, INC	Slot	SLOT#02 HURLEY H26-756(2366'FNL&1364'FWL,SEC.26)
Area	COLORADO	Well	HURLEY H26-756
Field	WELD COUNTY (NOBLE NAD 83 GRID)	Wellbore	HURLEY H26-756 AWB
Facility	SEC.26-T03N-R65W		

## WELLPATH DATA (171 stations)

MD [ft]	Inclination [°]	Azimuth [°]	TVD [ft]	Vert Sect [ft]	North [ft]	East [ft]	Latitude	Longitude	DLS [°/100ft]	Comments
2737.00	4.820	125.580	2736.80	-4.65	-5.25	6.11	40°11'49.508"N	104°38'07.110"W	3.11	
2832.00	8.740	125.340	2831.11	-10.26	-11.75	15.25	40°11'49.442"N	104°38'06.993"W	4.13	
2926.00	10.600	120.650	2923.77	-17.52	-20.29	28.52	40°11'49.357"N	104°38'06.823"W	2.15	
3021.00	10.190	113.080	3017.22	-23.81	-28.04	43.77	40°11'49.279"N	104°38'06.628"W	1.50	
3115.00	10.820	115.550	3109.64	-29.38	-35.10	59.38	40°11'49.207"N	104°38'06.427"W	0.82	
3209.00	10.940	118.210	3201.96	-35.88	-43.12	75.20	40°11'49.127"N	104°38'06.224"W	0.55	
3304.00	12.780	119.920	3294.92	-43.74	-52.63	92.25	40°11'49.031"N	104°38'06.006"W	1.97	
3398.00	12.700	121.760	3386.61	-52.65	-63.25	110.04	40°11'48.924"N	104°38'05.778"W	0.44	
3493.00	12.140	123.670	3479.39	-62.02	-74.28	127.24	40°11'48.814"N	104°38'05.558"W	0.73	
3682.00	15.820	124.960	3662.76	-84.16	-100.07	164.90	40°11'48.555"N	104°38'05.076"W	1.95	
3776.00	15.730	123.440	3753.22	-96.48	-114.44	186.04	40°11'48.411"N	104°38'04.805"W	0.45	
3871.00	15.870	120.110	3844.63	-107.97	-128.05	208.02	40°11'48.275"N	104°38'04.524"W	0.97	
3965.00	15.900	113.990	3935.05	-117.46	-139.73	230.90	40°11'48.157"N	104°38'04.230"W	1.78	
4060.00	16.240	109.290	4026.34	-124.80	-149.41	255.33	40°11'48.059"N	104°38'03.917"W	1.42	
4154.00	16.120	105.710	4116.62	-130.30	-157.29	280.30	40°11'47.979"N	104°38'03.596"W	1.07	
4248.00	16.030	106.880	4206.94	-135.23	-164.59	305.28	40°11'47.904"N	104°38'03.275"W	0.36	
4343.00	16.200	110.290	4298.21	-141.25	-173.00	330.26	40°11'47.819"N	104°38'02.954"W	1.01	
4437.00	16.220	118.400	4388.49	-149.76	-183.79	354.11	40°11'47.710"N	104°38'02.648"W	2.41	
4532.00	16.090	123.220	4479.74	-161.09	-197.31	376.80	40°11'47.574"N	104°38'02.357"W	1.42	
4627.00	16.150	130.180	4571.01	-174.78	-213.05	397.91	40°11'47.416"N	104°38'02.087"W	2.03	
4721.00	16.050	128.020	4661.33	-189.25	-229.49	418.13	40°11'47.252"N	104°38'01.829"W	0.65	
4816.00	16.090	127.490	4752.61	-203.33	-245.59	438.93	40°11'47.091"N	104°38'01.563"W	0.16	
4910.00	16.100	122.610	4842.93	-216.22	-260.54	460.24	40°11'46.941"N	104°38'01.290"W	1.44	
5005.00	16.220	120.770	4934.18	-227.93	-274.43	482.74	40°11'46.802"N	104°38'01.002"W	0.55	
5099.00	16.200	122.460	5024.44	-239.53	-288.18	505.08	40°11'46.664"N	104°38'00.716"W	0.50	
5194.00	16.020	123.080	5115.71	-251.66	-302.45	527.25	40°11'46.520"N	104°38'00.432"W	0.26	
5289.00	16.120	125.760	5207.00	-264.42	-317.31	548.93	40°11'46.372"N	104°38'00.154"W	0.79	
5383.00	16.090	127.490	5297.31	-277.94	-332.87	569.86	40°11'46.216"N	104°37'59.887"W	0.51	
5478.00	15.370	131.490	5388.76	-292.36	-349.22	589.74	40°11'46.052"N	104°37'59.633"W	1.37	
5572.00	15.850	136.360	5479.30	-308.12	-366.76	607.93	40°11'45.877"N	104°37'59.400"W	1.48	



# Actual Wellpath Report

HURLEY H26-756 AWP

Page n of nn



## REFERENCE WELLPATH IDENTIFICATION

Operator	NOBLE ENERGY, INC	Slot	SLOT#02 HURLEY H26-756(2366'FNL&1364'FWL,SEC.26)
Area	COLORADO	Well	HURLEY H26-756
Field	WELD COUNTY (NOBLE NAD 83 GRID)	Wellbore	HURLEY H26-756 AWP
Facility	SEC.26-T03N-R65W		

## WELLPATH DATA (171 stations)

MD [ft]	Inclination [°]	Azimuth [°]	TVD [ft]	Vert Sect [ft]	North [ft]	East [ft]	Latitude	Longitude	DLS [°/100ft]	Comments
5667.00	15.320	137.460	5570.80	-325.04	-385.40	625.37	40°11'45.691"N	104°37'59.178"W	0.64	
5762.00	15.690	136.650	5662.35	-341.92	-403.99	642.67	40°11'45.506"N	104°37'58.957"W	0.45	
5856.00	15.690	129.230	5752.85	-357.38	-421.27	661.24	40°11'45.333"N	104°37'58.720"W	2.13	
5951.00	15.840	122.070	5844.29	-370.36	-436.28	682.18	40°11'45.183"N	104°37'58.452"W	2.05	
6045.00	15.860	123.060	5934.71	-382.09	-450.10	703.82	40°11'45.044"N	104°37'58.175"W	0.29	
6140.00	15.710	124.290	6026.13	-394.34	-464.42	725.32	40°11'44.901"N	104°37'57.900"W	0.39	
6234.00	15.850	125.360	6116.59	-406.90	-479.02	746.31	40°11'44.755"N	104°37'57.631"W	0.34	
6329.00	15.770	125.950	6207.99	-419.95	-494.11	767.34	40°11'44.603"N	104°37'57.362"W	0.19	
6423.00	16.000	127.000	6298.41	-433.24	-509.41	788.02	40°11'44.450"N	104°37'57.098"W	0.39	
6518.00	13.850	93.470	6390.36	-439.73	-517.99	809.87	40°11'44.363"N	104°37'56.817"W	9.23	
6612.00	16.290	66.050	6481.24	-432.89	-513.31	833.18	40°11'44.407"N	104°37'56.516"W	7.93	
6707.00	23.040	38.310	6570.84	-410.69	-493.25	856.96	40°11'44.603"N	104°37'56.207"W	11.94	
6801.00	30.880	16.890	6654.75	-371.46	-455.59	875.45	40°11'44.974"N	104°37'55.964"W	13.16	
6896.00	40.480	15.990	6731.83	-317.13	-402.49	891.06	40°11'45.497"N	104°37'55.756"W	10.12	
6990.00	47.530	21.570	6799.42	-253.74	-340.82	912.24	40°11'46.104"N	104°37'55.476"W	8.55	
7085.00	57.060	15.310	6857.49	-180.61	-269.58	935.72	40°11'46.806"N	104°37'55.164"W	11.30	
7179.00	66.180	5.200	6902.22	-98.43	-188.38	950.09	40°11'47.607"N	104°37'54.969"W	13.54	
7274.00	76.640	358.590	6932.49	-8.74	-98.57	952.90	40°11'48.494"N	104°37'54.921"W	12.83	
7369.00	87.200	357.280	6945.82	84.38	-4.71	949.50	40°11'49.422"N	104°37'54.953"W	11.20	
7463.00	89.720	358.800	6948.35	177.57	89.19	946.29	40°11'50.350"N	104°37'54.983"W	3.13	
7558.00	89.940	0.450	6948.63	272.09	184.19	945.67	40°11'51.289"N	104°37'54.979"W	1.75	
7652.00	89.820	1.970	6948.83	365.83	278.16	947.65	40°11'52.217"N	104°37'54.941"W	1.62	
7747.00	89.480	2.910	6949.41	460.71	373.08	951.70	40°11'53.155"N	104°37'54.877"W	1.05	
7841.00	89.410	4.110	6950.32	554.65	466.89	957.45	40°11'54.081"N	104°37'54.791"W	1.28	
7936.00	89.420	2.970	6951.29	649.59	561.70	963.32	40°11'55.017"N	104°37'54.704"W	1.20	
8031.00	89.350	1.720	6952.31	744.45	656.62	967.21	40°11'55.955"N	104°37'54.642"W	1.32	
8125.00	89.260	359.940	6953.45	838.15	750.60	968.57	40°11'56.884"N	104°37'54.612"W	1.90	
8220.00	89.480	358.420	6954.49	932.58	845.58	967.21	40°11'57.822"N	104°37'54.618"W	1.62	
8314.00	89.450	358.900	6955.37	1025.93	939.55	965.01	40°11'58.751"N	104°37'54.634"W	0.51	
8409.00	89.970	359.170	6955.85	1120.35	1034.53	963.41	40°11'59.690"N	104°37'54.643"W	0.62	



# Actual Wellpath Report

HURLEY H26-756 AWP

Page n of nn



## REFERENCE WELLPATH IDENTIFICATION

Operator	NOBLE ENERGY, INC	Slot	SLOT#02 HURLEY H26-756(2366'FNL&1364'FWL,SEC.26)
Area	COLORADO	Well	HURLEY H26-756
Field	WELD COUNTY (NOBLE NAD 83 GRID)	Wellbore	HURLEY H26-756 AWP
Facility	SEC.26-T03N-R65W		

## WELLPATH DATA (171 stations)

MD [ft]	Inclination [°]	Azimuth [°]	TVD [ft]	Vert Sect [ft]	North [ft]	East [ft]	Latitude	Longitude	DLS [°/100ft]	Comments
8503.00	89.880	359.420	6955.98	1213.82	1128.53	962.25	40°12'00.619"N	104°37'54.646"W	0.28	
8598.00	89.970	359.360	6956.10	1308.30	1223.52	961.24	40°12'01.557"N	104°37'54.647"W	0.11	
8692.00	89.880	359.410	6956.22	1401.78	1317.52	960.23	40°12'02.486"N	104°37'54.648"W	0.11	
8787.00	89.850	359.900	6956.45	1496.31	1412.51	959.66	40°12'03.425"N	104°37'54.643"W	0.52	
8881.00	89.880	359.720	6956.67	1589.86	1506.51	959.35	40°12'04.354"N	104°37'54.636"W	0.19	
8976.00	89.820	359.130	6956.92	1684.35	1601.51	958.40	40°12'05.293"N	104°37'54.636"W	0.62	
9071.00	89.850	358.150	6957.19	1778.69	1696.48	956.14	40°12'06.231"N	104°37'54.653"W	1.03	
9165.00	89.910	358.250	6957.39	1871.95	1790.43	953.19	40°12'07.160"N	104°37'54.679"W	0.12	
9260.00	89.750	356.640	6957.67	1966.04	1885.33	948.95	40°12'08.098"N	104°37'54.722"W	1.70	
9354.00	89.910	356.890	6957.95	2058.98	1979.18	943.65	40°12'09.026"N	104°37'54.778"W	0.32	
9448.00	89.940	357.460	6958.07	2152.01	2073.07	939.02	40°12'09.954"N	104°37'54.826"W	0.61	
9543.00	89.820	358.420	6958.27	2246.21	2168.01	935.60	40°12'10.893"N	104°37'54.858"W	1.02	
9637.00	89.780	358.940	6958.60	2339.57	2261.98	933.44	40°12'11.822"N	104°37'54.874"W	0.55	
9732.00	89.910	359.430	6958.86	2434.01	2356.97	932.08	40°12'12.760"N	104°37'54.880"W	0.53	
9826.00	89.910	0.500	6959.00	2527.59	2450.97	932.03	40°12'13.689"N	104°37'54.869"W	1.14	
9921.00	90.000	0.990	6959.08	2622.28	2545.96	933.26	40°12'14.628"N	104°37'54.841"W	0.52	
10015.00	89.660	1.350	6959.36	2716.03	2639.94	935.18	40°12'15.556"N	104°37'54.804"W	0.53	
10110.00	89.880	1.970	6959.74	2810.82	2734.90	937.93	40°12'16.494"N	104°37'54.757"W	0.69	
10204.00	89.780	1.600	6960.02	2904.64	2828.85	940.86	40°12'17.422"N	104°37'54.707"W	0.41	
10299.00	89.880	0.240	6960.30	2999.35	2923.84	942.39	40°12'18.361"N	104°37'54.675"W	1.44	
10393.00	89.880	359.100	6960.50	3092.88	3017.83	941.85	40°12'19.290"N	104°37'54.670"W	1.21	
10488.00	89.910	358.480	6960.67	3187.25	3112.81	939.84	40°12'20.229"N	104°37'54.684"W	0.65	
10583.00	89.970	356.600	6960.77	3281.36	3207.72	935.76	40°12'21.167"N	104°37'54.725"W	1.98	
10772.00	89.910	356.490	6960.97	3468.11	3396.38	924.37	40°12'23.032"N	104°37'54.848"W	0.07	
10867.00	89.780	357.140	6961.23	3562.05	3491.23	919.09	40°12'23.970"N	104°37'54.904"W	0.70	
10961.00	89.880	358.390	6961.50	3655.22	3585.16	915.43	40°12'24.898"N	104°37'54.939"W	1.33	
11056.00	89.940	359.240	6961.65	3749.60	3680.13	913.46	40°12'25.837"N	104°37'54.953"W	0.90	
11151.00	89.940	359.490	6961.75	3844.07	3775.13	912.41	40°12'26.776"N	104°37'54.954"W	0.26	
11245.00	89.880	0.360	6961.90	3937.64	3869.13	912.29	40°12'27.705"N	104°37'54.944"W	0.93	
11340.00	89.880	0.230	6962.10	4032.27	3964.13	912.78	40°12'28.643"N	104°37'54.926"W	0.14	



# Actual Wellpath Report

HURLEY H26-756 AWP

Page n of nn



## REFERENCE WELLPATH IDENTIFICATION

Operator	NOBLE ENERGY, INC	Slot	SLOT#02 HURLEY H26-756(2366'FNL&1364'FWL,SEC.26)
Area	COLORADO	Well	HURLEY H26-756
Field	WELD COUNTY (NOBLE NAD 83 GRID)	Wellbore	HURLEY H26-756 AWB
Facility	SEC.26-T03N-R65W		

## WELLPATH DATA (171 stations)

MD [ft]	Inclination [°]	Azimuth [°]	TVD [ft]	Vert Sect [ft]	North [ft]	East [ft]	Latitude	Longitude	DLS [°/100ft]	Comments
11434.00	89.750	0.260	6962.40	4125.89	4058.12	913.18	40°12'29.572"N	104°37'54.909"W	0.14	
11529.00	90.000	0.340	6962.61	4220.52	4153.12	913.68	40°12'30.511"N	104°37'54.890"W	0.28	
11624.00	89.850	359.900	6962.73	4315.12	4248.12	913.88	40°12'31.450"N	104°37'54.876"W	0.49	
11718.00	89.910	357.960	6962.93	4408.52	4342.10	912.12	40°12'32.378"N	104°37'54.887"W	2.06	
11813.00	89.940	356.770	6963.06	4502.59	4437.00	907.75	40°12'33.317"N	104°37'54.931"W	1.25	
11907.00	89.850	356.230	6963.23	4595.46	4530.82	902.01	40°12'34.244"N	104°37'54.993"W	0.58	
12001.00	90.030	355.710	6963.33	4688.19	4624.59	895.41	40°12'35.171"N	104°37'55.066"W	0.59	
12096.00	89.720	356.390	6963.53	4781.93	4719.36	888.86	40°12'36.109"N	104°37'55.139"W	0.79	
12191.00	89.970	357.000	6963.79	4875.84	4814.20	883.39	40°12'37.046"N	104°37'55.197"W	0.69	
12285.00	89.880	356.970	6963.91	4968.84	4908.07	878.44	40°12'37.974"N	104°37'55.249"W	0.10	
12380.00	89.850	355.370	6964.14	5062.61	5002.86	872.10	40°12'38.912"N	104°37'55.319"W	1.68	
12475.00	89.780	354.430	6964.44	5156.02	5097.48	863.65	40°12'39.847"N	104°37'55.416"W	0.99	
12569.00	89.940	355.700	6964.67	5248.50	5191.13	855.57	40°12'40.774"N	104°37'55.508"W	1.36	
12664.00	89.720	358.180	6964.96	5342.46	5285.99	850.50	40°12'41.711"N	104°37'55.562"W	2.62	
12759.00	90.090	359.910	6965.11	5436.88	5380.97	848.91	40°12'42.650"N	104°37'55.570"W	1.86	
12853.00	90.180	359.720	6964.89	5530.43	5474.97	848.61	40°12'43.579"N	104°37'55.562"W	0.22	
12948.00	89.970	359.900	6964.77	5624.98	5569.97	848.29	40°12'44.518"N	104°37'55.554"W	0.29	
13042.00	90.000	0.580	6964.79	5718.60	5663.97	848.69	40°12'45.447"N	104°37'55.537"W	0.72	
13137.00	90.090	1.220	6964.72	5813.31	5758.96	850.18	40°12'46.385"N	104°37'55.506"W	0.68	
13231.00	89.940	359.990	6964.69	5906.98	5852.95	851.17	40°12'47.314"N	104°37'55.481"W	1.32	
13326.00	90.120	355.680	6964.64	6001.14	5947.86	847.58	40°12'48.252"N	104°37'55.516"W	4.54	
13420.00	89.940	358.480	6964.59	6094.14	6041.73	842.80	40°12'49.180"N	104°37'55.566"W	2.98	
13515.00	89.780	0.970	6964.83	6188.67	6136.72	842.34	40°12'50.119"N	104°37'55.559"W	2.63	
13609.00	89.850	1.280	6965.13	6282.41	6230.70	844.19	40°12'51.047"N	104°37'55.524"W	0.34	
13704.00	89.910	2.040	6965.33	6377.21	6325.66	846.94	40°12'51.985"N	104°37'55.476"W	0.80	
13798.00	89.780	3.200	6965.58	6471.10	6419.56	851.23	40°12'52.913"N	104°37'55.409"W	1.24	
13893.00	89.820	4.200	6965.91	6566.06	6514.36	857.37	40°12'53.849"N	104°37'55.318"W	1.05	
13987.00	89.940	4.560	6966.11	6660.04	6608.08	864.54	40°12'54.774"N	104°37'55.214"W	0.40	
14082.00	89.750	3.750	6966.37	6755.02	6702.83	871.43	40°12'55.710"N	104°37'55.113"W	0.88	
14176.00	90.030	2.680	6966.55	6848.95	6796.68	876.70	40°12'56.637"N	104°37'55.033"W	1.18	



# Actual Wellpath Report

HURLEY H26-756 AWP

Page n of nn



## REFERENCE WELLPATH IDENTIFICATION

Operator	NOBLE ENERGY, INC	Slot	SLOT#02 HURLEY H26-756(2366'FNL&1364'FWL,SEC.26)
Area	COLORADO	Well	HURLEY H26-756
Field	WELD COUNTY (NOBLE NAD 83 GRID)	Wellbore	HURLEY H26-756 AWP
Facility	SEC.26-T03N-R65W		

## WELLPATH DATA (171 stations)

MD [ft]	Inclination [°]	Azimuth [°]	TVD [ft]	Vert Sect [ft]	North [ft]	East [ft]	Latitude	Longitude	DLS [°/100ft]	Comments
14271.00	90.000	1.500	6966.52	6943.79	6891.62	880.16	40°12'57.575"N	104°37'54.977"W	1.24	
14366.00	89.850	359.490	6966.65	7038.44	6986.61	880.98	40°12'58.513"N	104°37'54.954"W	2.12	
14461.00	90.000	358.680	6966.77	7132.87	7081.60	879.47	40°12'59.452"N	104°37'54.962"W	0.87	
14555.00	89.780	358.400	6966.95	7226.20	7175.57	877.07	40°13'00.381"N	104°37'54.981"W	0.38	
14650.00	89.970	358.000	6967.16	7320.45	7270.52	874.09	40°13'01.319"N	104°37'55.007"W	0.47	
14744.00	89.940	357.310	6967.23	7413.60	7364.44	870.24	40°13'02.248"N	104°37'55.045"W	0.73	
14839.00	90.090	356.920	6967.21	7507.61	7459.32	865.46	40°13'03.186"N	104°37'55.095"W	0.44	
14933.00	89.780	357.610	6967.32	7600.67	7553.21	860.98	40°13'04.114"N	104°37'55.141"W	0.80	
15028.00	89.970	1.180	6967.52	7695.14	7648.19	859.97	40°13'05.053"N	104°37'55.142"W	3.76	
15122.00	89.820	1.070	6967.70	7788.88	7742.17	861.82	40°13'05.981"N	104°37'55.106"W	0.20	
15217.00	89.880	0.660	6967.94	7883.58	7837.16	863.25	40°13'06.920"N	104°37'55.075"W	0.44	
15312.00	90.000	1.420	6968.04	7978.31	7932.14	864.98	40°13'07.858"N	104°37'55.041"W	0.81	
15406.00	89.880	1.850	6968.14	8072.11	8026.10	867.66	40°13'08.786"N	104°37'54.995"W	0.47	
15501.00	90.000	2.040	6968.24	8166.93	8121.05	870.88	40°13'09.724"N	104°37'54.941"W	0.24	
15595.00	89.910	1.480	6968.32	8260.75	8215.01	873.77	40°13'10.652"N	104°37'54.892"W	0.60	
15690.00	89.850	0.630	6968.51	8355.47	8309.99	875.52	40°13'11.591"N	104°37'54.858"W	0.90	
15784.00	89.910	1.520	6968.71	8449.21	8403.97	877.28	40°13'12.519"N	104°37'54.823"W	0.95	
15879.00	89.750	359.980	6968.99	8543.89	8498.96	878.53	40°13'13.458"N	104°37'54.795"W	1.63	
16068.00	90.000	355.130	6969.41	8731.08	8687.73	870.47	40°13'15.324"N	104°37'54.875"W	2.57	
16162.00	90.250	353.650	6969.20	8823.35	8781.28	861.28	40°13'16.249"N	104°37'54.982"W	1.60	Last BHI MWD Survey
16186.00	90.250	353.650	6969.10	8846.85	8805.13	858.62	40°13'16.485"N	104°37'55.013"W	0.00	Projection to Bit



# Actual Wellpath Report

HURLEY H26-756 AWP

Page n of nn



## REFERENCE WELLPATH IDENTIFICATION

Operator	NOBLE ENERGY, INC	Slot	SLOT#02 HURLEY H26-756(2366'FNL&1364'FWL,SEC.26)
Area	COLORADO	Well	HURLEY H26-756
Field	WELD COUNTY (NOBLE NAD 83 GRID)	Wellbore	HURLEY H26-756 AWB
Facility	SEC.26-T03N-R65W		

## HOLE & CASING SECTIONS - Ref Wellbore: HURLEY H26-756 AWB Ref Wellpath: HURLEY H26-756 AWP

String/Diameter	Start MD [ft]	End MD [ft]	Interval [ft]	Start TVD [ft]	End TVD [ft]	Start N/S [ft]	Start E/W [ft]	End N/S [ft]	End E/W [ft]
13.5in Open Hole	30.00	1922.00	1892.00	30.00	1921.99	-0.02	0.00	-1.60	1.08
9.625in Casing Surface	30.00	1922.00	1892.00	30.00	1921.99	-0.02	0.00	-1.60	1.08
8.5in Open Hole	1922.00	16186.00	14264.00	1921.99	6969.10	-1.60	1.08	8805.13	858.62

## TARGETS

Name	TVD [ft]	North [ft]	East [ft]	Grid East [US ft]	Grid North [US ft]	Latitude	Longitude	Shape
SECTION 14-T03N-R65W	0.00	-0.22	-22.35	3241514.12	1315823.44	40°11'49.560"N	104°38'07.476"W	polygon
SECTION 23-T03N-R65W	0.00	-0.22	-22.35	3241514.12	1315823.44	40°11'49.560"N	104°38'07.476"W	polygon
SECTION 26-T03N-R65W	0.00	-0.22	-22.35	3241514.12	1315823.44	40°11'49.560"N	104°38'07.476"W	polygon
HURLEY H26-756 Landing Point	6955.00	80.00	950.00	3242486.42	1315903.66	40°11'50.259"N	104°37'54.936"W	point
HURLEY H26-756 REV-1 BHL (1170'FSL&2265FWL,SEC.14)	6970.24	8810.02	830.10	3242366.52	1324633.28	40°13'16.536"N	104°37'55.380"W	point

## WELLPATH COMPOSITION - Ref Wellbore: HURLEY H26-756 AWB Ref Wellpath: HURLEY H26-756 AWP

Start MD [ft]	End MD [ft]	Positional Uncertainty Model	Log Name/Comment	Wellbore
0.00	1920.00	Gyrodatta standard - Drop gyro or Multi-shot	3rd Party Surface Gyros <84.9-1920>	HURLEY H26-756 AWB
1920.00	16162.00	OWSG MWD rev2 + IFR1 + Multi-Station Correction	BH/ATC OWSG MWD+IFR+MSA <1981'-16162>	HURLEY H26-756 AWB
16162.00	16186.00	Blind Drilling (std)	Projection to bit	HURLEY H26-756 AWB