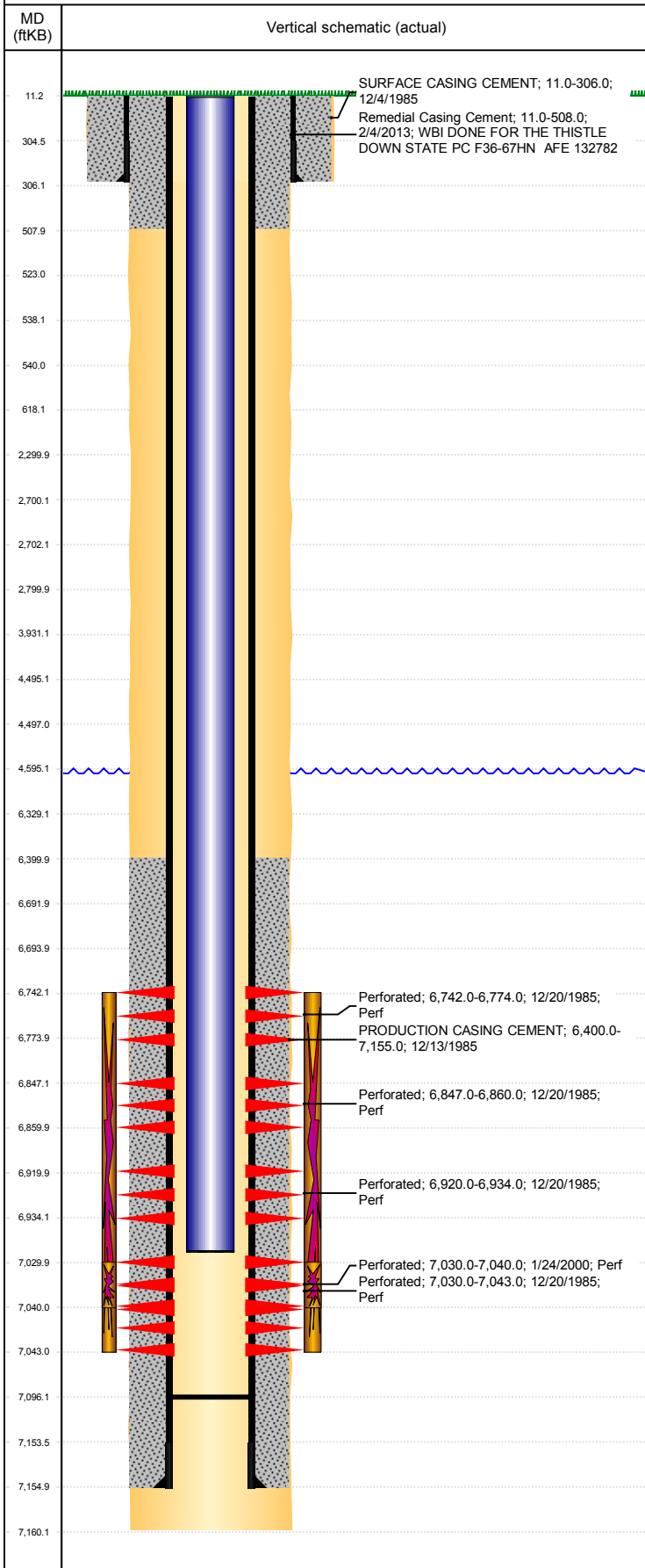


Well Name: STATE FARM 36-06

VERTICAL, ORIGINAL HOLE, 12/14/2018 11:57:29 AM



Well Header									
API 05-123-12859		Business Unit DJ BASIN			District 15		Well Config VERTICAL		
KB - GL / MSL (ft... 11.00		Spud Date 12/3/1985		P & A Date		Well Production Status PR			SoRT No
Comment									
Surface Location (Congressional)									
Qtr 3 SE	Qtr 4 NE	Section 36	Twnshp 5	Twnsh... N	Range 65	Rng E/... W	Actual Latitude (°) 40.35791200	Actual Longitude (°) -104.60437200	
Wellbore Sections									
Section Des			Size (in)			Act Top, MD (ftKB)		Act Btm, MD (ftKB)	
SURFACE			12 1/4			11		306	
PRODUCTION			7 7/8			306		7,160	
Casing Strings									
Csg Des			Run Date		OD (in)	Wt/Len (lb/ft)	Grade	Top, MD (ftKB)	MD (ftKB)
Surface			12/4/1985		8 5/8	24.00	J-55	11.0	306.0
Production			12/13/1985		4 1/2	15.10	N-80	11.0	7,155.0
Cement									
Des					Start Date		Top (ftKB)		Btm (ftKB)
SURFACE CASING CEMENT					12/4/1985		11.0		306.0
PRODUCTION CASING CEMENT					12/13/1985		6,400.0		7,155.0
Remedial Casing Cement					2/4/2013		11.0		508.0
Zone Statuses									
Zone Name		Status Date		Status	Fluid Type	Job			Prod Method
CODELL		1/15/1986		PR	Oil	DRILLING/COMPLETION - ORIGINAL, 12/3/1985...			
CODELL		1/30/2000		PR	Oil	RE-FRAC, 1/22/2000 00:00			
NIOBRARA		1/15/1986		PR	Oil	DRILLING/COMPLETION - ORIGINAL, 12/3/1985...			
NIOBRARA-CO...		1/15/1986		PR	Oil	DRILLING/COMPLETION - ORIGINAL, 12/3/1985...			
NIOBRARA-CO...		1/30/2000		PR	Oil	RE-FRAC, 1/22/2000 00:00			
Perforation Data									
Linked Zone			Bnch/Stg	Entered Shot Total	Top (ftKB)		Btm (ftKB)		Date
NIOBRARA, ORIGINAL HOLE			A	4	6,742.00		6,774.00		12/20/1985
NIOBRARA, ORIGINAL HOLE			B	8	6,847.00		6,860.00		12/20/1985
NIOBRARA, ORIGINAL HOLE			C	4	6,920.00		6,934.00		12/20/1985
CODELL, ORIGINAL HOLE				40	7,030.00		7,040.00		1/24/2000
CODELL, ORIGINAL HOLE				26	7,030.00		7,043.00		12/20/1985
Stimulation Intervals									
Zone				Start Date		Top (ftKB)		Btm (ftKB)	
NIOBRARA-CODELL, ORIGINAL HOLE				1/10/1986		6,742.0		7,043.0	
CODELL, ORIGINAL HOLE				1/26/2000		7,030.0		7,040.0	
Other In Hole									
Run Date		Des				OD (in)	Top (ftKB)		Btm (ftKB)
Logs									
Date		Type					Top, MD (ftKB)		Btm, MD (ftKB)
12/12/1985		COMPENSATED DENSITY					4,054.0		7,184.0
12/12/1985		INDUCTION					306.0		7,184.0
12/20/1985		CEMENT BOND					6,325.0		7,052.0
2/5/2013		CBL/CCL/GR					306.0		750.0
11/8/2018		GYRO					11.0		6,900.0
Plug Back Total Depths									
Date		Type		Com					Depth (ftKB)
12/13/1985		GUIDE SHOE							7,122.0
1/31/2013		FILL							7,096.0